

Exhibit J

Schematic Designs for Building Reuse Scenarios by Solomon Cordwell Buenz Architects

This exhibit has been amended from the original October 29, 2015 application submission to limit the scope of the exhibit to 1918-1920 Sansom Street.



RITTENHOUSE SQUARE

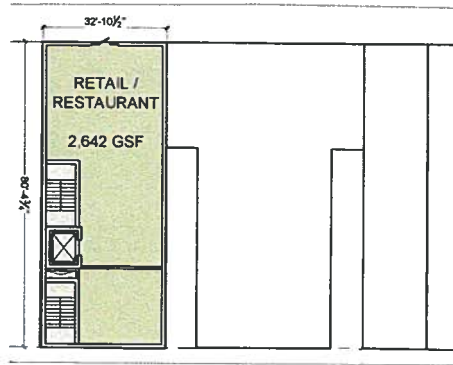
PHILADELPHIA, PA

SEPTEMBER 2015

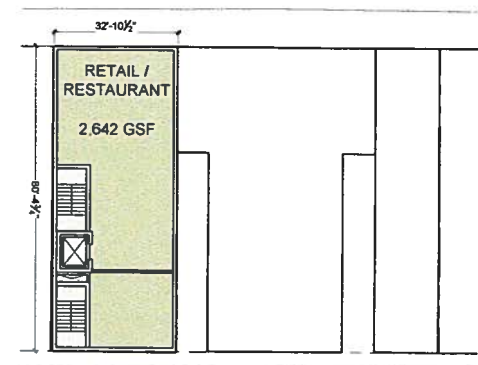
SOUTHERN LAND
COMPANY

SCB

1918 - 1920 SANSOM RESTAURANT + RETAIL



GROUND FLOOR PLAN

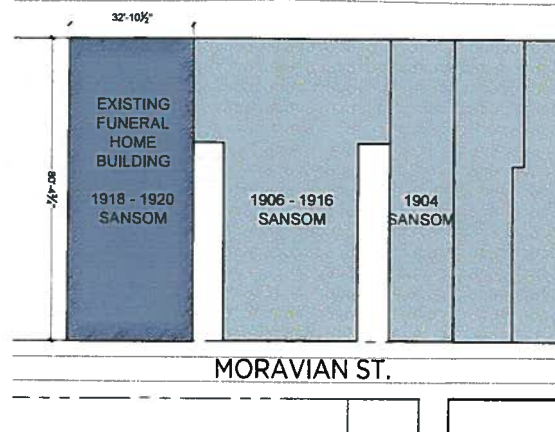


LEVEL 2 FLOOR PLAN

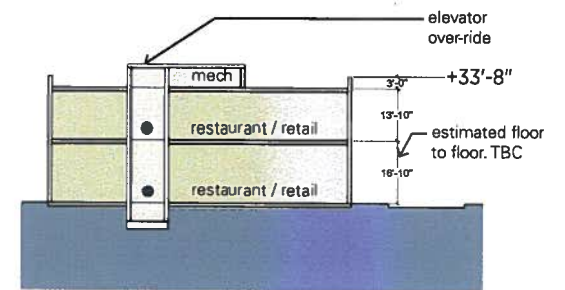
COFFEE SHOP / RESTAURANT			
FLOOR	BOH / MECH	NSF	GSF
2	486	2,156	2,642
1	486	2,156	2,642
	972	4,312	5,284

AREA TABULATION

SANSOM ST.

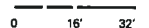


EXISTING FOOTPRINT



N-S BUILDING SECTION

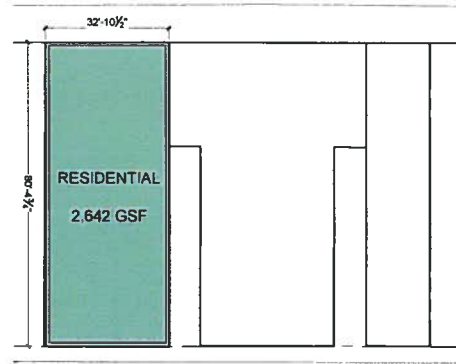
SLC RITTENHOUSE SQUARE



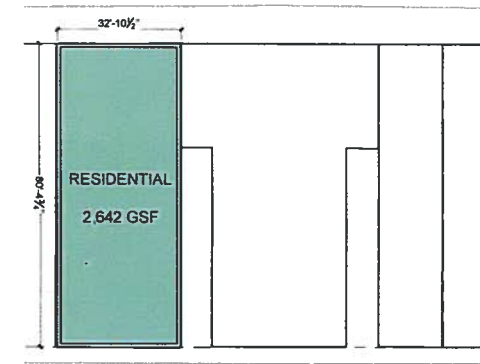
2015.023

10.15.2015

1918 - 1920 SANSOM RESIDENTIAL (SINGLE FAMILY)



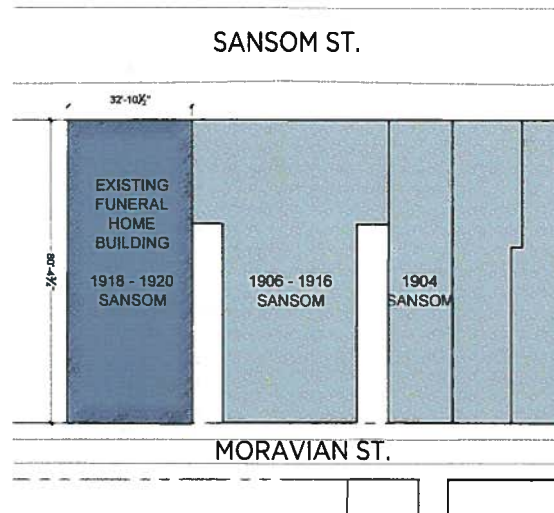
GROUND FLOOR PLAN



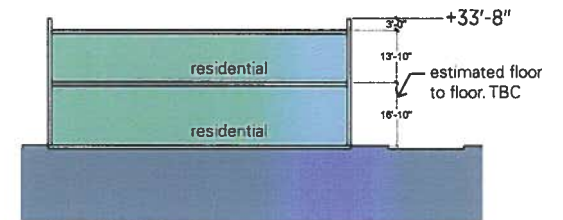
LEVEL 2 FLOOR PLAN

RESIDENTIAL (SINGLE FAMILY)	
FLOOR	GSF
2	2,642
1	2,642
	5,284

AREA TABULATION

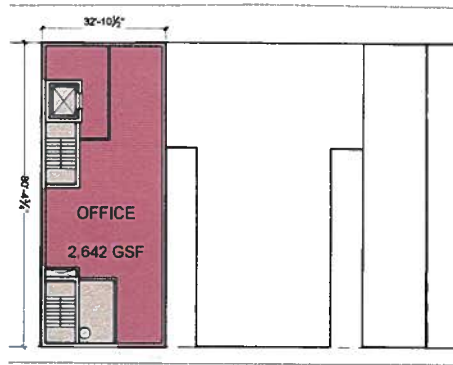


EXISTING FOOTPRINT

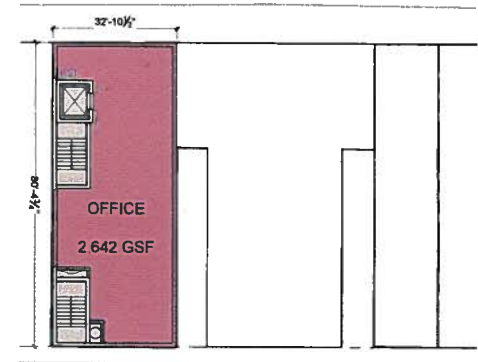


N-S BUILDING SECTION

1918 - 1920 SANSOM OFFICE



GROUND FLOOR PLAN

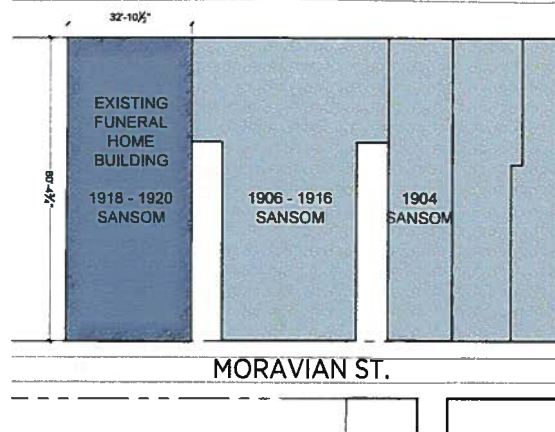


LEVEL 2 FLOOR PLAN

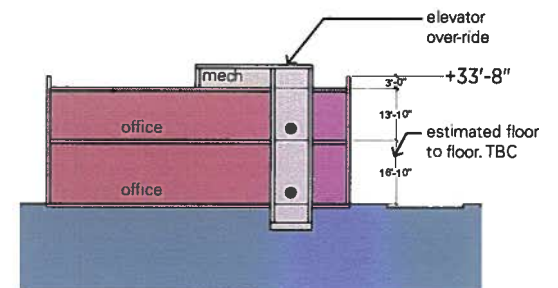
OFFICE			
FLOOR	BOH / MECH	OFFICE NSF	GSF
2	511	2,131	2,642
1	669	1,973	2,642
	1,180	4,104	5,284

AREA TABULATION

SANSOM ST.



EXISTING FOOTPRINT



N-S BUILDING SECTION