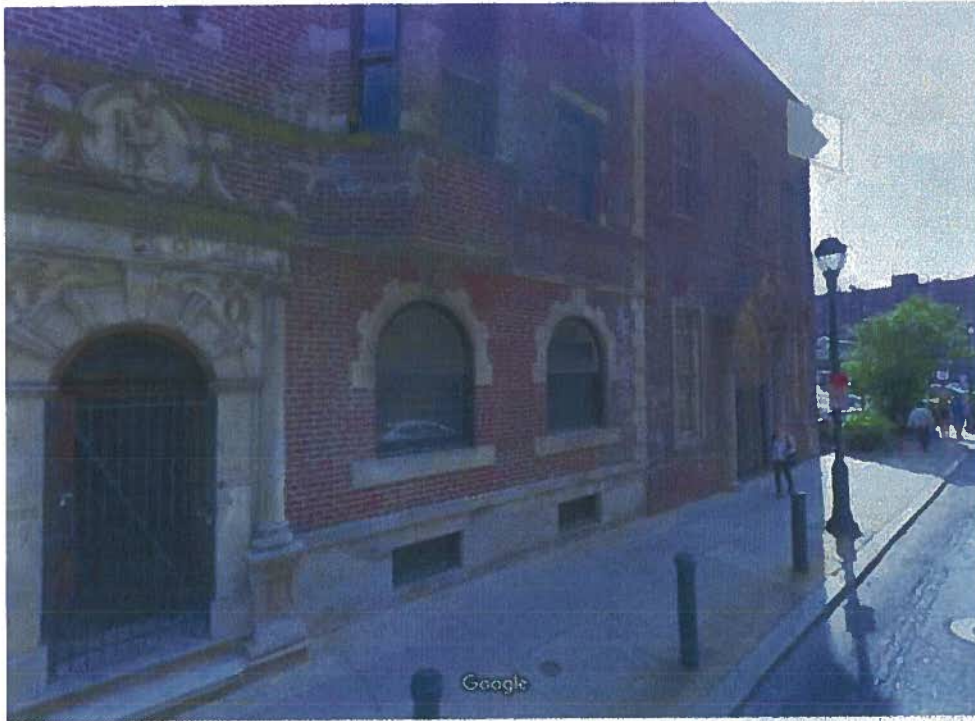


Exhibit C

Photographs by George E. Thomas of Civic Visions LP

This exhibit has been amended from the original October 29, 2015 application submission to limit the scope of the exhibit to 1918-1920 Sansom Street.

1918 -20 Sansom Street



1918-20 Sansom Street, Google Street view looking SW (May 2014)



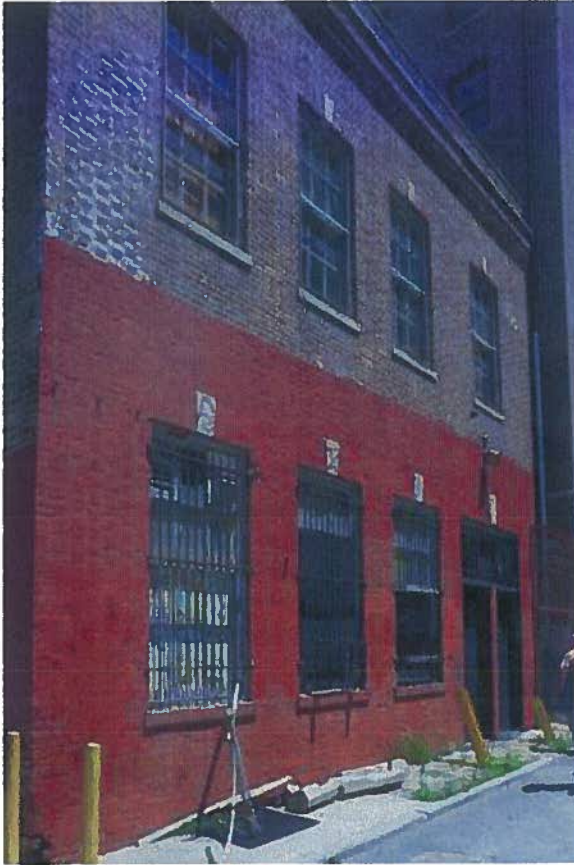
1918-20 Sansom Street, detail of front window and surrounding masonry (August 2015)



1918 -20 Sansom Street, water staining, spalling damage, and overpointing, brick of Sansom Street façade (August 2015)



1918-20 Sansom Street, water staining, spalling and efflorescence through brick and stone, Sansom Street façade (August 2015)



1918-20 Sansom Street, rear façade, paint over brick base with large areas of efflorescence from roof water damage



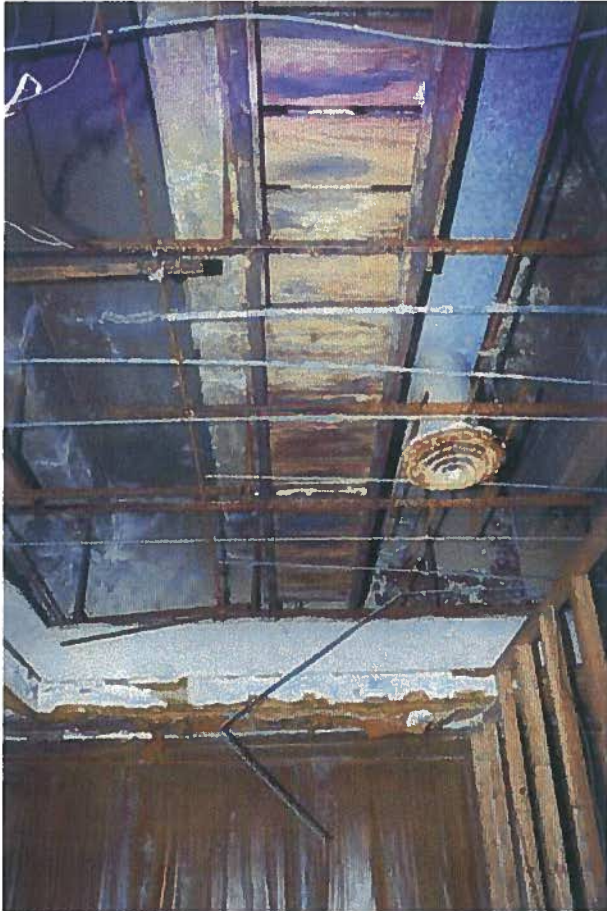
1918-20 Sansom Street, plants growing in roof drains, evidence of level of roof water damage



1918-20 Sansom Street, front lobby, NW corner, showing extent of water damage from roof drains (August 2015)



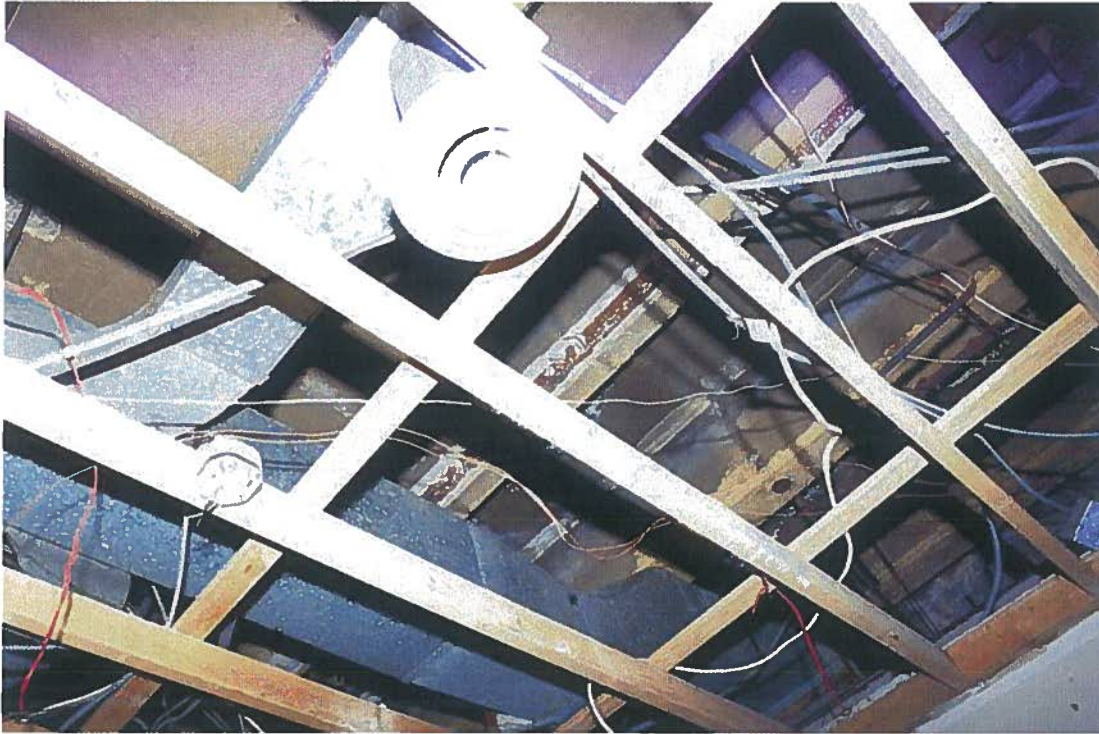
1918 -20 Sansom Street, front lobby NE corner, showing extent of water damage from roof drains, (August 2015)



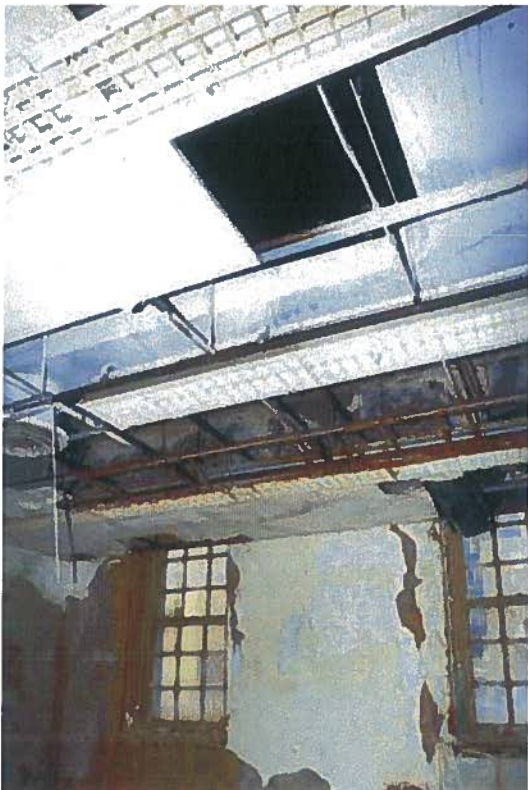
1918-20 Sansom Street – ceiling damage front lobby



1
1918-20 Sansom Street, rot damage to modern partition (August 2015)



1918-1920 Sansom Street, Steel encased beam, first floor, rust and loss of fireproofing above dropped ceiling (August 2015)



1918-1920 Sansom Street, rust damage to steel reinforcing for suspended ceiling, second floor (August 2015)



1918-1920 Sansom Street, NW corner second floor front, multiple layers of wire lath and plaster, destroyed by water; suspended ceiling (August 2015)



1918-20 Sansom Street, NE corner, second floor front, destroyed wire lath, east wall under failed roof drain (August 2015)



1918-1920 Sansom Street, levels of water damage in parapet and roof from blocked drains (August 2015)



1906-12 and 1918-1920 Sansom Street, efflorescence and water damage where 1918 -1920 roof drains cause leakage into both buildings