



State and Local Funding to the School District of Philadelphia

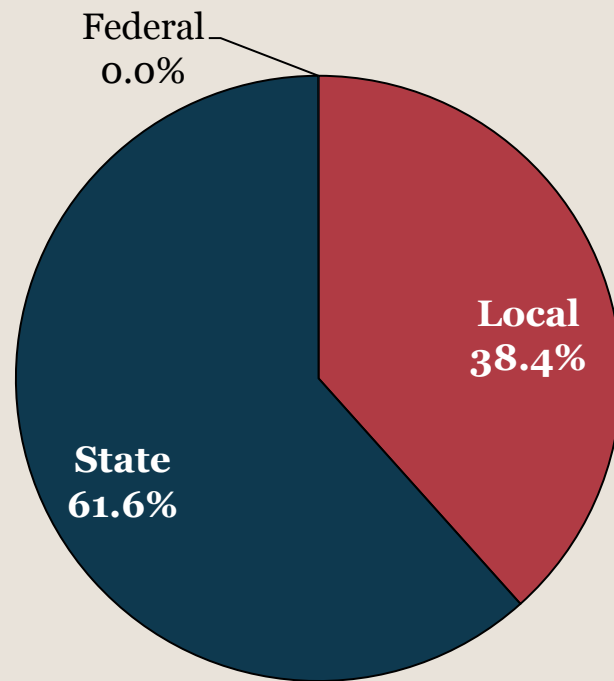
*Local Funding for the District Has Increased
Dramatically*

State and Local Funding Overview

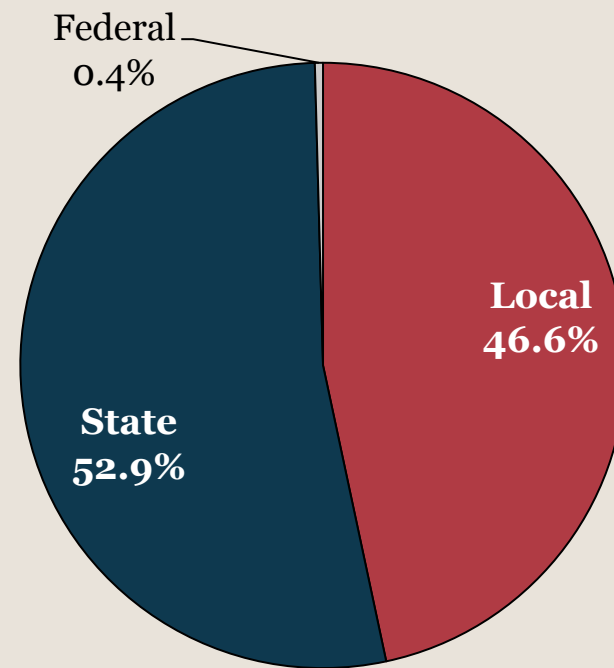
- Since FY2009, the local funding to the School District of Philadelphia has increased by over \$357 million or 42%
- Over the past 30 years, local funding has increased by \$856 million, with large year over year increases since FY2011
- Local funding makes up an increasing share of all District operating revenue, replacing revenue lost from recent cuts to State funding
- Including projected cigarette tax receipts, 47% of all District funding in FY2015 will come from local revenue, the highest percentage in 30 years
- In FY2015, State funding dropped to a 30-year low of 53% of total District funds
- Over the past 6 years, the Nutter Administration and City Council have implemented legislation that contributed more to the District in terms of total dollar increases than in any similar period over the past 30 years

Local Funding as a Percent of School District Funding Has Risen from 38% to Almost 47% from FY2009 to FY2015

FY2009 Funding Sources



FY2015 Funding Sources



Note: FY2015 budgeted amounts include estimated cigarette tax revenues

Total Local Funding to the School District Has Increased by almost 42% -- More Than \$357 Million -- since FY2009

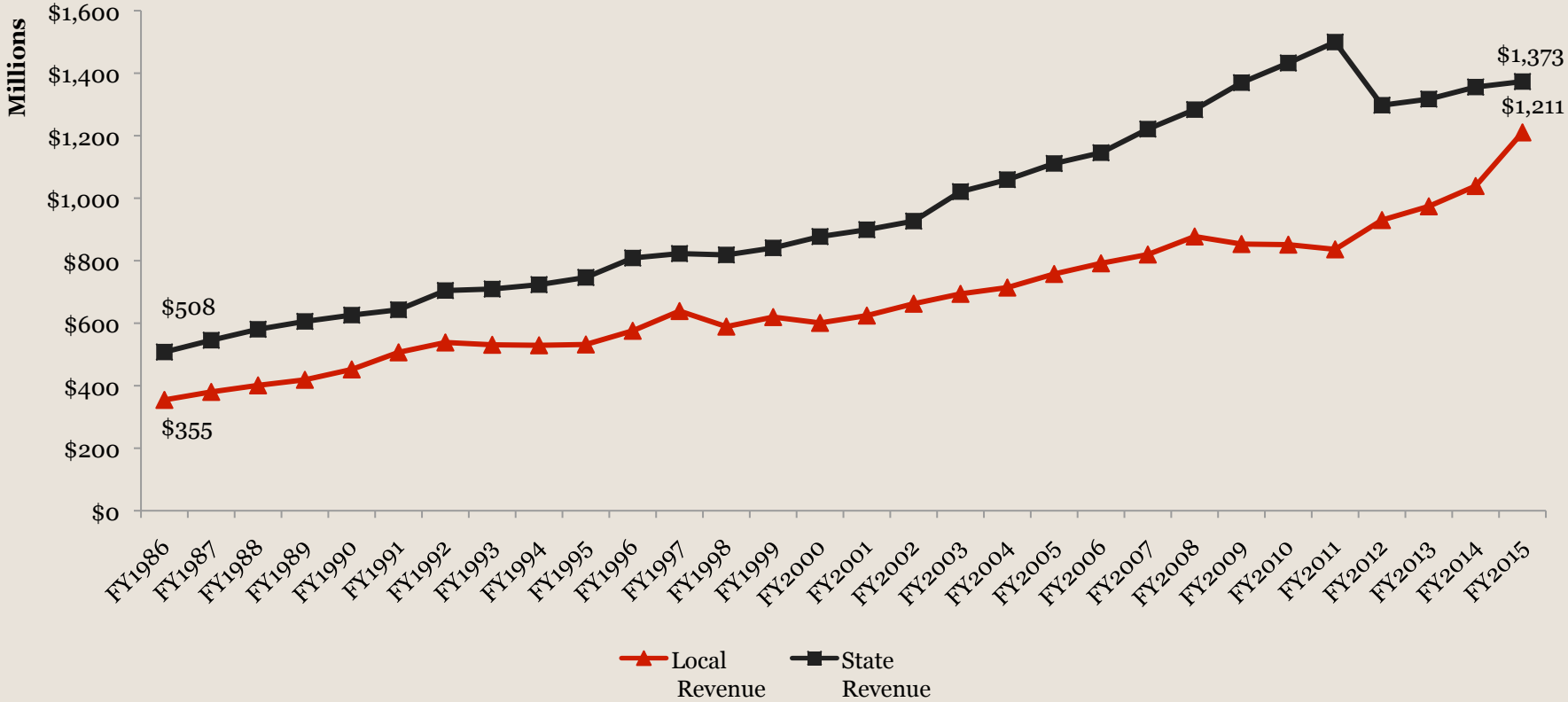
Fiscal Year	Total Local Funding	Total State Funding	Growth of Total Local Funding Since 2009	Growth of Total State Funding Since 2009
FY2009	\$853,317,216	\$1,369,708,142	--	--
FY2010	\$851,380,781	\$1,432,592,599	-0.2%	4.6%
FY2011	\$836,270,381	\$1,499,473,291	-2.0%	9.5%
FY2012	\$930,016,272	\$1,297,524,381	9.0%	-5.3%
FY2013	\$974,015,462	\$1,317,141,255	14.1%	-3.8%
FY2014 Current Estimate	\$1,038,961,000	\$1,355,664,000	21.8%	-1.0%
FY2015 Budgeted	\$1,210,558,000	\$1,373,201,000	41.9%	0.3%

The recession had a severe impact on local revenues that supported both the City and the District. Property tax revenues and interest on investments declined in FY2009 and Use & Occupancy tax receipts declined in FY2011

Note: FY2015 budgeted amounts include estimated cigarette tax revenues

Local Funding to the District Has Increased by \$856M over the Past 30 Years, with Large Year over Year Increases since FY2011

School District of Philadelphia Funding Sources FY1986-FY2015

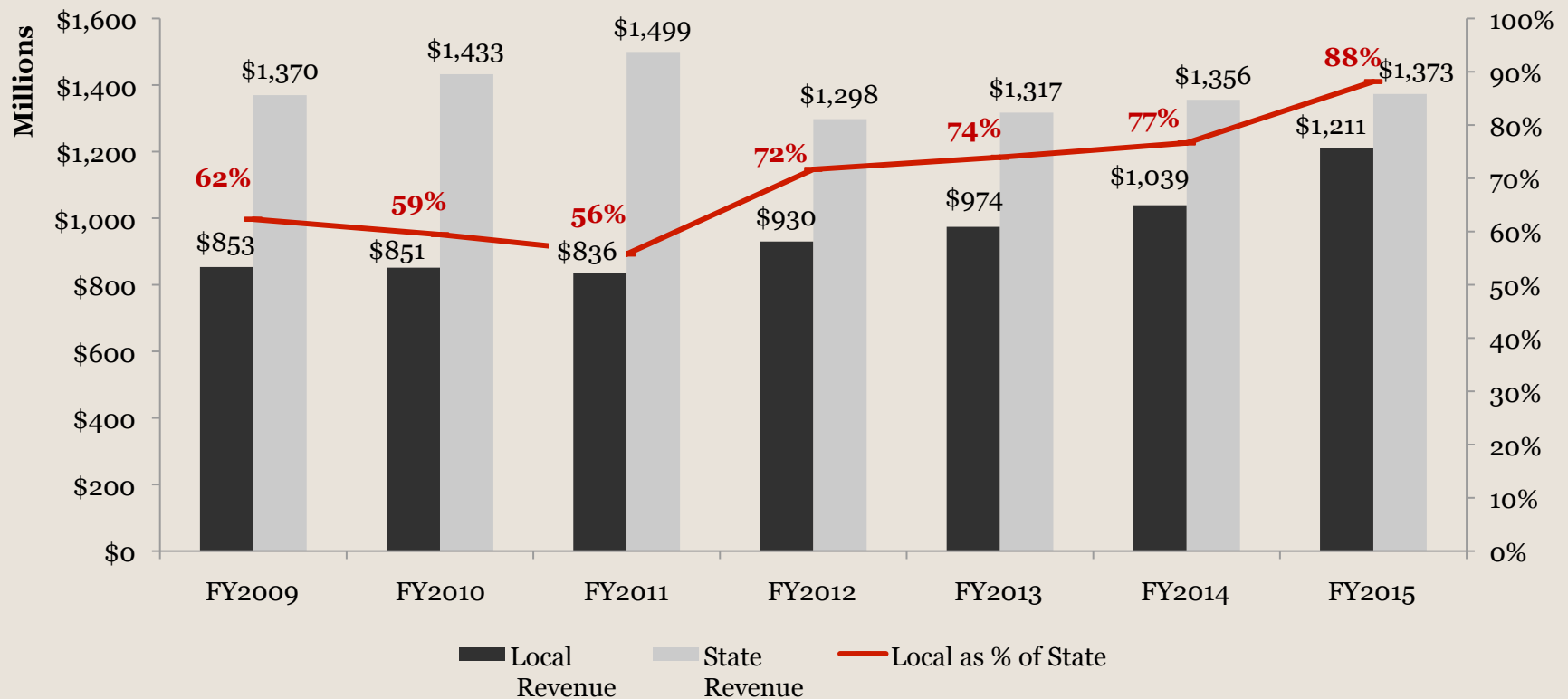


Note: FY2015 budgeted amounts include estimated cigarette tax revenues

Local Funding Has Increased from 62% to 88% of Total State Funding since FY2009

- For every dollar the State contributes to the District, the City now pays \$0.88

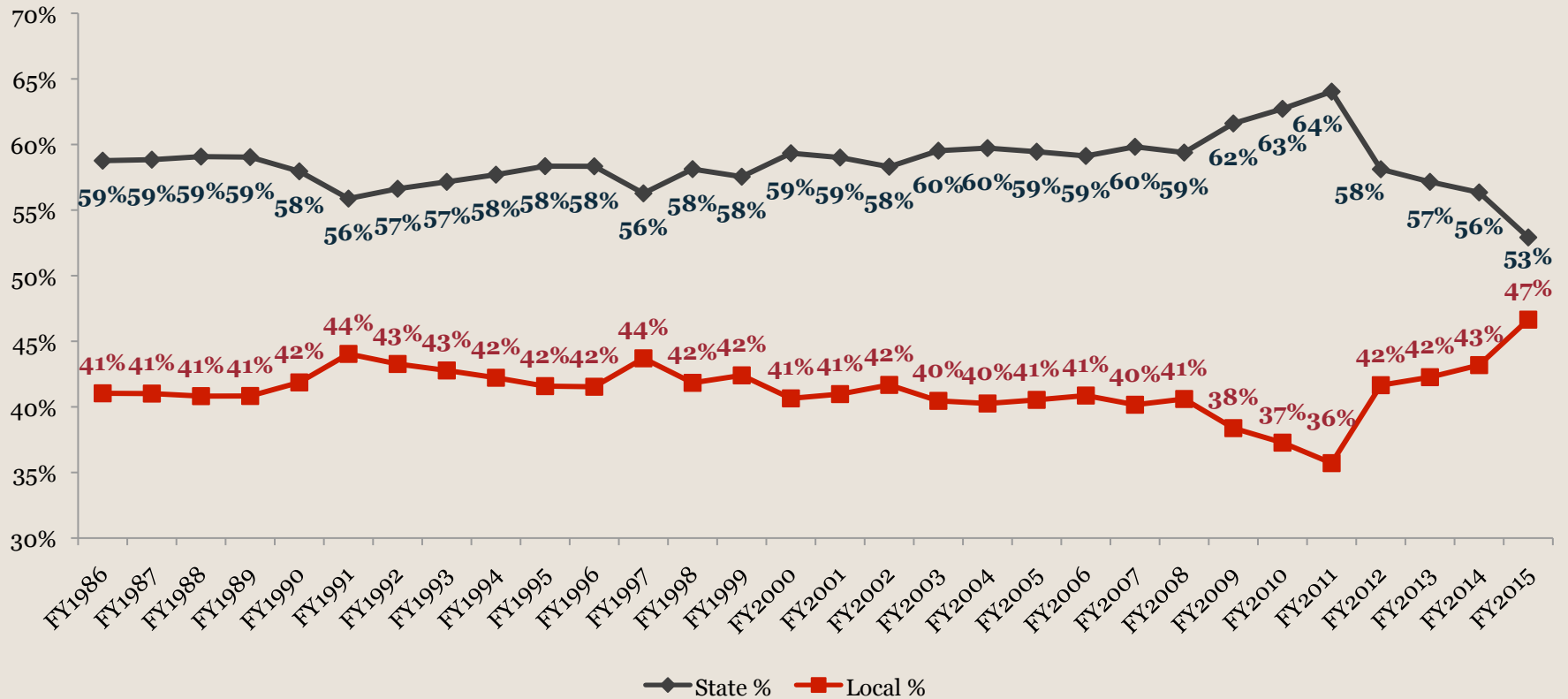
Total State and Local Funding to School District of Philadelphia



Note: FY2015 budgeted amounts include estimated cigarette tax revenues

Local Funding Has Increased to 47%, the Highest Percentage in 30 Years with a Significant Increase since FY2011

Share of State Funding (%) FY1986-FY2015

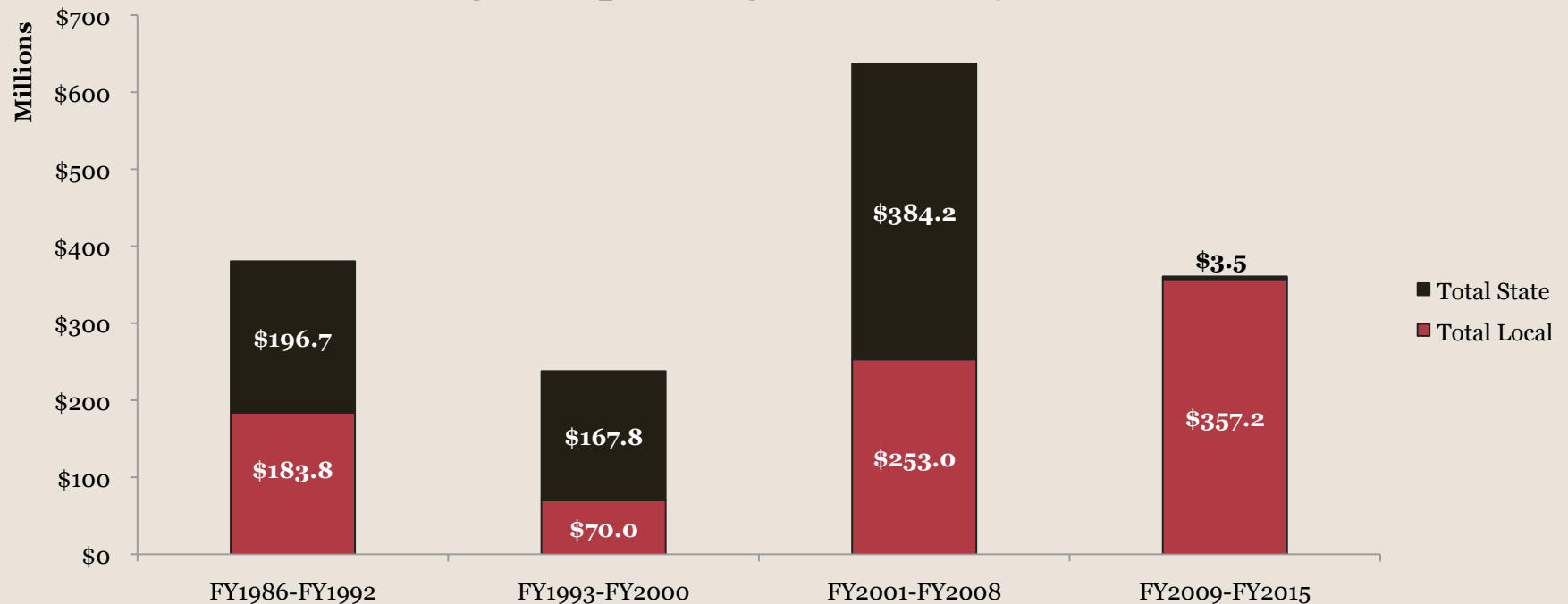


Note: FY2015 budgeted amounts include estimated cigarette tax revenues

Since FY2009, Local Funding to the District Increased by over \$357M

- When comparing the growth in education funding across City administrations, the Nutter Administration and City Council have implemented legislation that contributed more to the District in terms of total dollar increases than in any similar period over the past 30 years
- Since 2009, the local funding increase is more than 100 times the State's increase

Change in Operating Revenues by Source (\$)



Note: Excludes Federal funding; District financial data not available prior to FY1986