

ADDRESS: 3500 S BROAD ST

Proposal: Construct building, ADA ramp, and driveway; add lighting

Review Requested: Final Approval

Owner: City of Philadelphia

Applicant: Brittany Scherer, Studio Sustena

History: 1926; American Swedish Historical Museum; John A. Nyden, architect

Individual Designation: None

District Designation: FDR Park Historic District, Significant, 8/9/2000

Staff Contact: Alex Till, alexander.till@phila.gov

OVERVIEW: This application proposes to construct an auxiliary building on the grounds of the American Swedish History Museum in FDR Park. It additionally proposes a number of exterior landscape improvements including constructing an ADA accessible ramp, adding a paved parking area, constructing pedestrian paths and a plaza, and adding exterior lighting to the building. The building was constructed in 1926 by Swedish-American architect John Nydén as part of the Sesquicentennial celebration held at FDR Park and has housed the American Swedish Historical Museum since 1928. The auxiliary building will be positioned to the western side of the building between it and Pattison Avenue and its design imitates the colors and materials of the museum building. The parking area will be situated on the eastern side of the building near Pattison Avenue and will be connected to the museum building by a series of paved pedestrian paths and a paved plaza. The ADA ramp will be constructed on the park facing south side of the building and feature a mixed metal with clear acrylic panel design. Finally, lighting will be installed, both at ground level, via poles, and via a wall sconce element on the museum building. The entire building and grounds are visible from both Pattison Avenue and FDR Park.

SCOPE OF WORK:

- Construct new auxiliary building
- Construct new ADA ramp
- Construct new parking area
- Construct new plaza and pedestrian paths
- Add new lighting to grounds and building

STANDARDS FOR REVIEW:

The Secretary of the Interior's Standards for the Treatment of Historic Properties and Guidelines include:

- *Standard 9: New additions, exterior alterations, or related new construction shall not destroy historic materials that characterize the property. The new work shall be differentiated from the old and shall be compatible with the massing, size, scale, and architectural features to protect the historic integrity of the property and its environment.*
 - The auxiliary building, ADA ramp, parking area, plaza, and paths will be compatible with the overall massing, size, scale, and architectural features of the Historic District.
 - Additional drawings showing the auxiliary building and ramp in context with the museum building should be provided.

STAFF COMMENT: Approval, pursuant to Standard 9.



Figure 1: American Swedish History Museum looking north from FDR Park, Oct 2019.



Figure 2: American Swedish History Museum looking south from Pattison Ave, Jul 2025.



Figure 3: American Swedish History Museum, closeup of park side entrance.



Figure 4: Aerial image of American Swedish History Museum looking North.

From: Brittany Scherer <bscherer@studio-sustena.com>

Sent: Monday, May 11, 2026 3:55 PM

To: preservation <preservation@Phila.gov>

Subject: Historic Review request for the American Swedish Historic Museum Campus Entry Improvements Project

Good afternoon,

I'd like to respectfully request review of proposed site improvements at the American Swedish Historical Museum. Attached are materials related to the project.

The project proposes exterior site improvements and the construction of a new auxiliary structure. Existing conditions consist of limited accessible access to the Museum at the Pattison Ave building entrance (Street Side) and no accessible access at the park side building entrance (Park Side). The project aims to improve visitor safety and accessibility while respecting the architectural significance of the Museum and surrounding park landscape.

Exterior site improvements include: improved accessible pedestrian entry on the Street Side (Pattison Ave), new accessible pedestrian entry between the Park Side building entrance and terrace, new one-way vehicular drive with accessible drop-off and 10 parking spaces near Pattison Ave, new auxiliary building to support Museum outdoor programming, new site and building façade lighting at the Street Side, improved building façade lighting at Park Side, new landscaping at the Pattison Ave entrance and parking lot.

Thank you,
Brittany

Brittany Scherer

Senior Landscape Architect

Studio Sustena® (formerly Roofmeadow)

c: 610.246.6092



Wulff Architects, Inc.

BALA Consulting Engineers, Inc.

BEAM

Horner & Canter Associates

Morris Arboretum & Gardens Urban Forestry Consultants

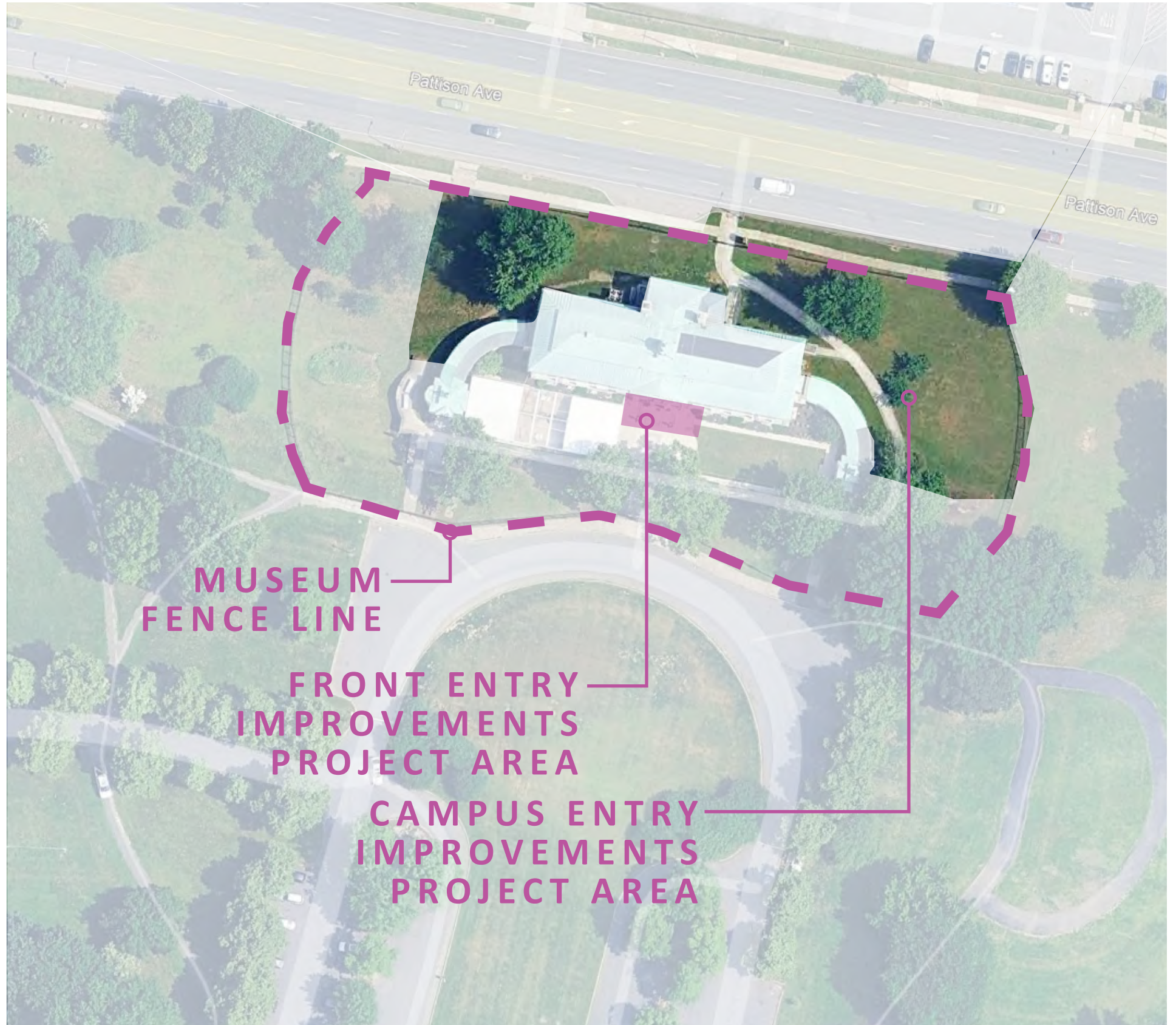
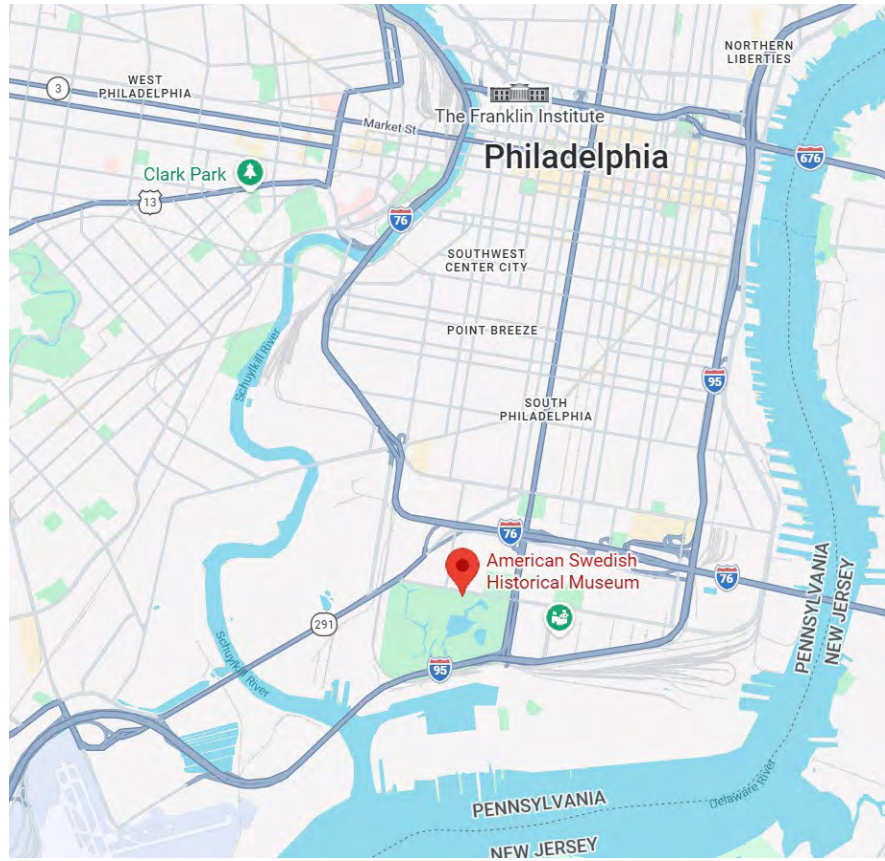
Skanska



AMERICAN SWEDISH HISTORICAL MUSEUM

FRONT ENTRY & CAMPUS-ENTRY IMPROVEMENTS

HISTORIC COMMISSION REVIEW | JUNE 2026



SITE LOCATION

AMERICAN SWEDISH HISTORICAL MUSEUM

BUILDING & CAMPUS ENTRY IMPROVEMENTS

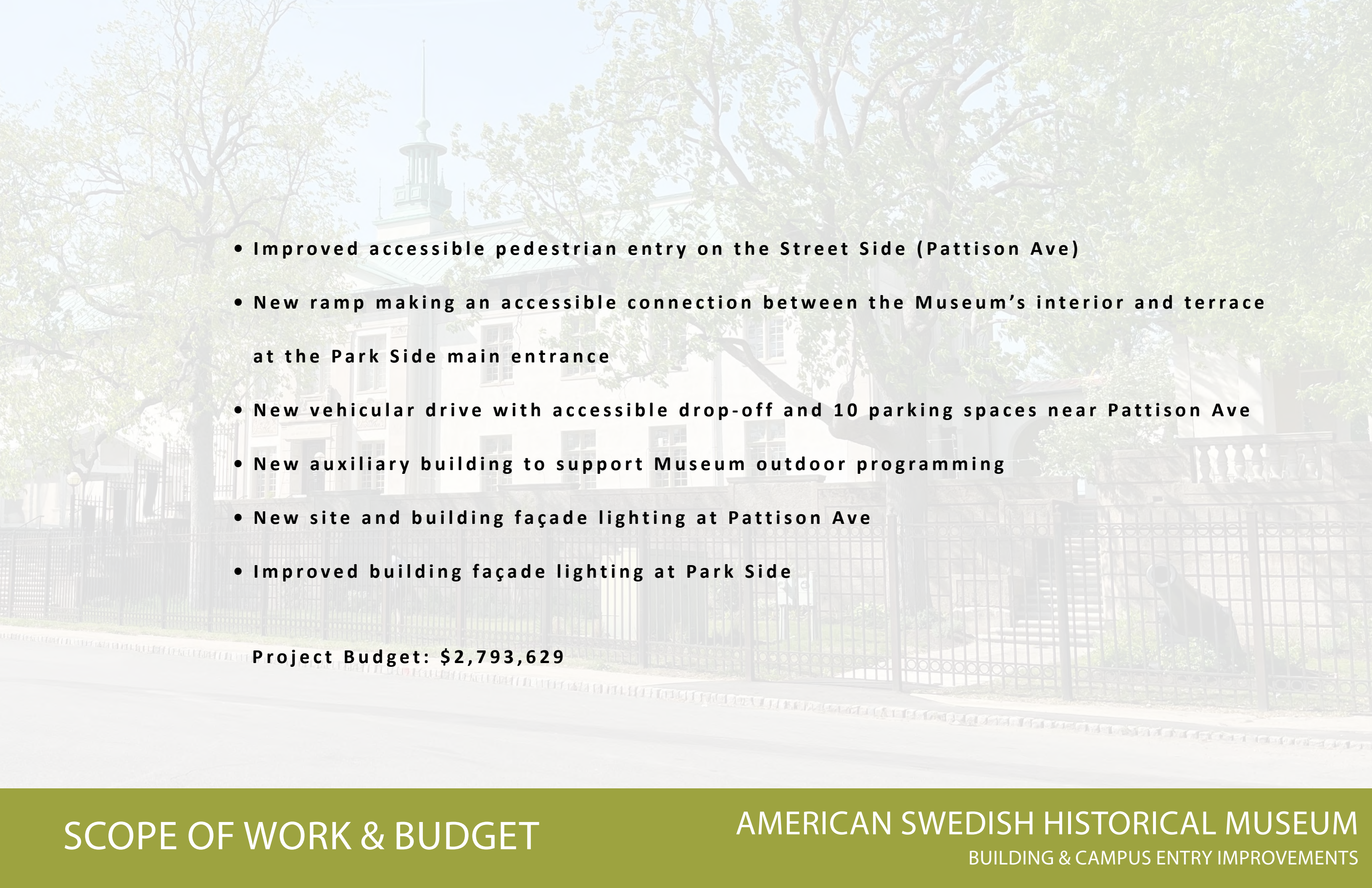


Improve visitor safety & accessibility

Increase visibility of Museum from Pattison Ave

Accommodate Museum events and logistics

**Provide auxiliary building to support outdoor
Museum programming**

- 
- **Improved accessible pedestrian entry on the Street Side (Pattison Ave)**
 - **New ramp making an accessible connection between the Museum's interior and terrace at the Park Side main entrance**
 - **New vehicular drive with accessible drop-off and 10 parking spaces near Pattison Ave**
 - **New auxiliary building to support Museum outdoor programming**
 - **New site and building façade lighting at Pattison Ave**
 - **Improved building façade lighting at Park Side**

Project Budget: \$2,793,629



SITE APPROACH- PARK SIDE



AMERICAN SWEDISH HISTORICAL MUSEUM
BUILDING & CAMPUS ENTRY IMPROVEMENTS

EXISTING CONDITIONS



SITE APPROACH- PATTISON AVE

EXISTING CONDITIONS

AMERICAN SWEDISH HISTORICAL MUSEUM
BUILDING & CAMPUS ENTRY IMPROVEMENTS



PATTISON AVE BUILDING ENTRY AND EXISTING WALKWAY



AMERICAN SWEDISH HISTORICAL MUSEUM
BUILDING & CAMPUS ENTRY IMPROVEMENTS

EXISTING CONDITIONS



PATTISON AVE BUILDING ENTRY AND ACCESSIBLE RAMP





PATTISON AVE PEDESTRIAN ENTRY



EXISTING CONDITIONS

AMERICAN SWEDISH HISTORICAL MUSEUM
BUILDING & CAMPUS ENTRY IMPROVEMENTS



WEST LAWN AREA



EXISTING CONDITIONS

AMERICAN SWEDISH HISTORICAL MUSEUM
BUILDING & CAMPUS ENTRY IMPROVEMENTS



PARK SIDE TERRACE & BUILDING ENTRY



AMERICAN SWEDISH HISTORICAL MUSEUM
BUILDING & CAMPUS ENTRY IMPROVEMENTS

EXISTING CONDITIONS

Non-accessible building entrance

Park side terrace

Two accessible parking spaces on Pattison Ave

ADA ramp in right-of-way

Pedestrian entrance gate

Accessible ramp and building entrance

Walkway connection to/from park side terrace

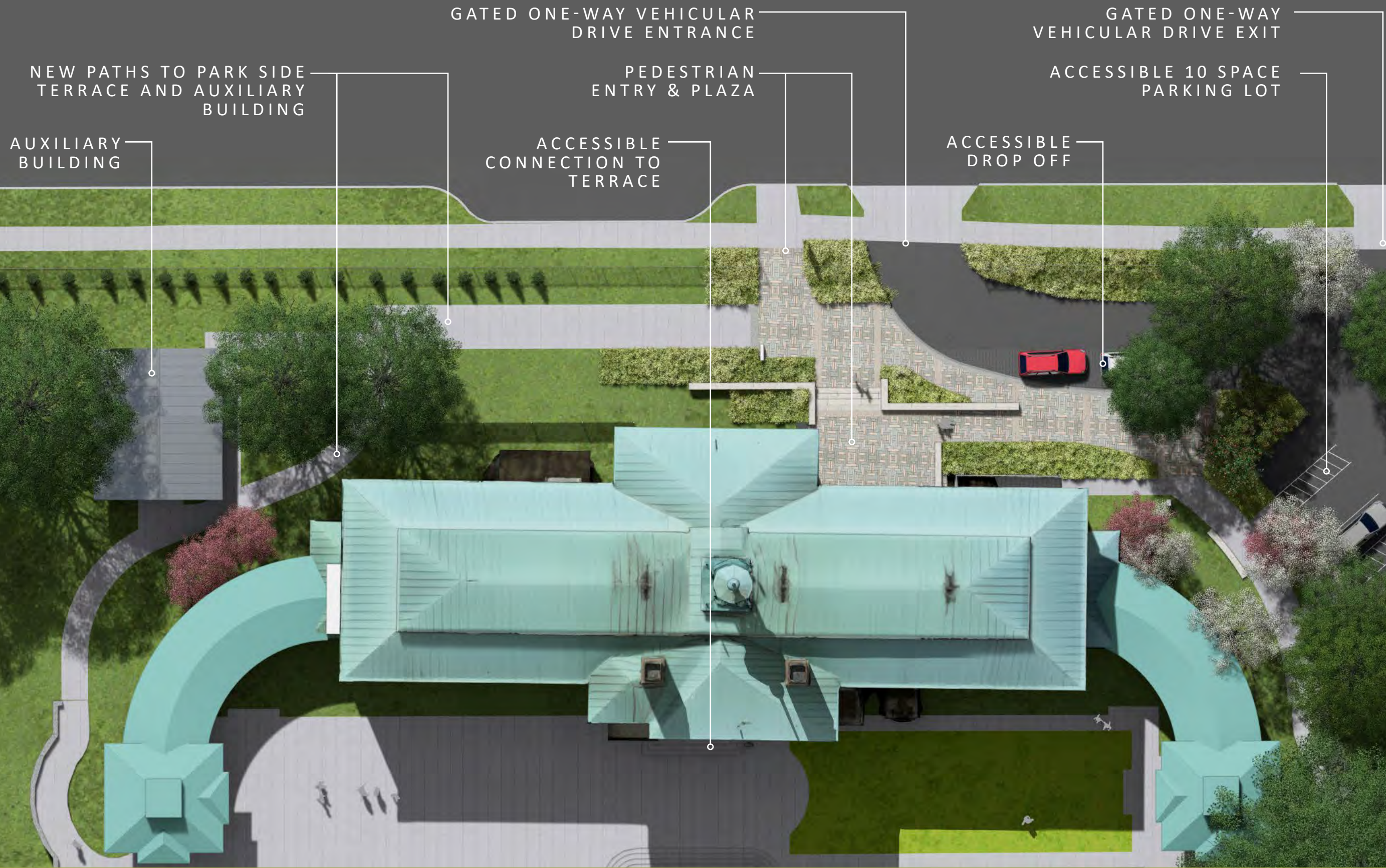


PATTISON AVE

EXISTING CONDITIONS

AMERICAN SWEDISH HISTORICAL MUSEUM
BUILDING & CAMPUS ENTRY IMPROVEMENTS

PATTISON AVE



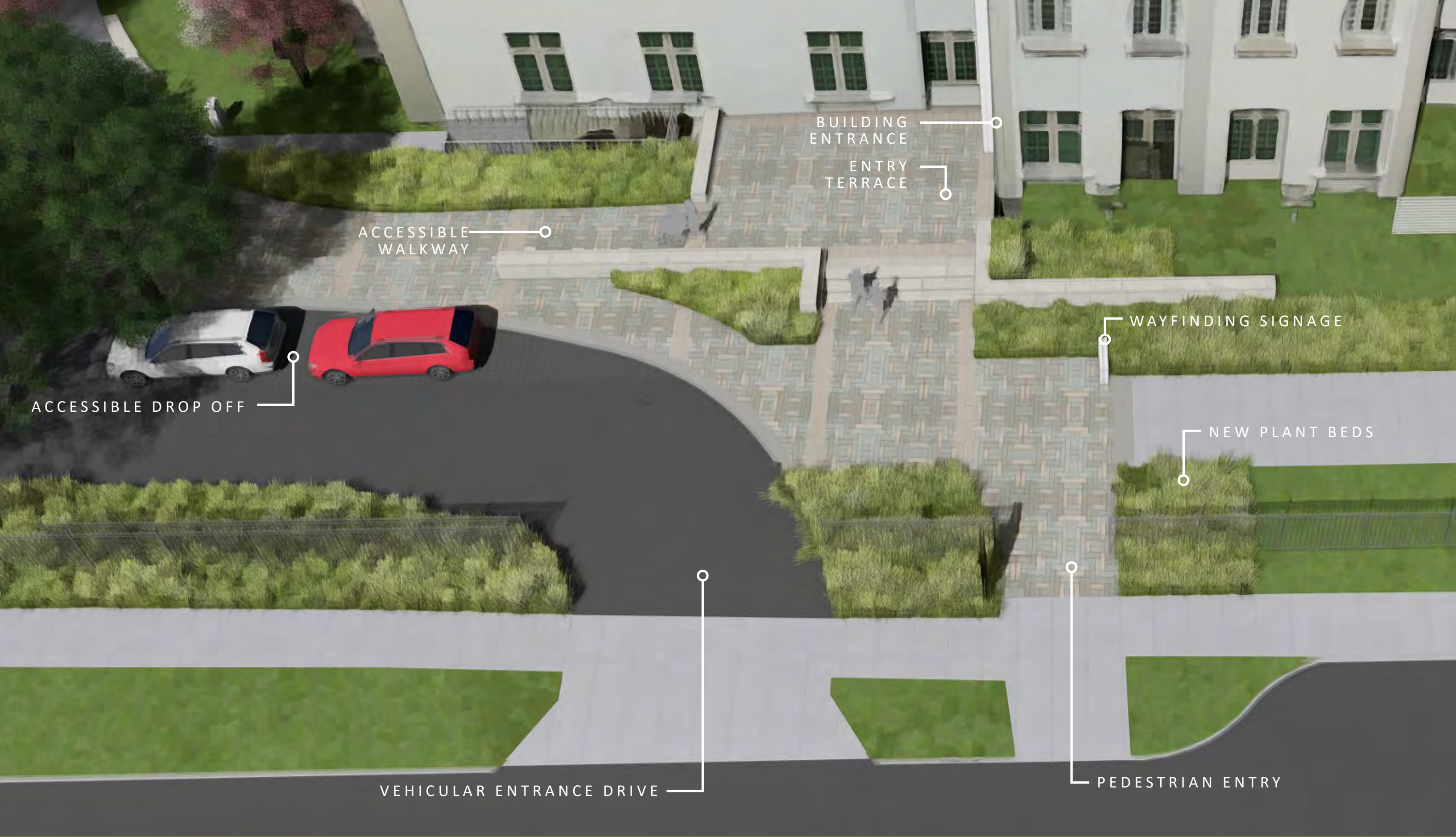
PROPOSED PLAN

AMERICAN SWEDISH HISTORICAL MUSEUM
BUILDING & CAMPUS ENTRY IMPROVEMENTS



VIEW FROM PATTISON AVE

AMERICAN SWEDISH HISTORICAL MUSEUM
BUILDING & CAMPUS ENTRY IMPROVEMENTS



BUILDING
ENTRANCE

ENTRY
TERRACE

ACCESSIBLE
WALKWAY

ACCESSIBLE DROP OFF

WAYFINDING SIGNAGE

NEW PLANT BEDS

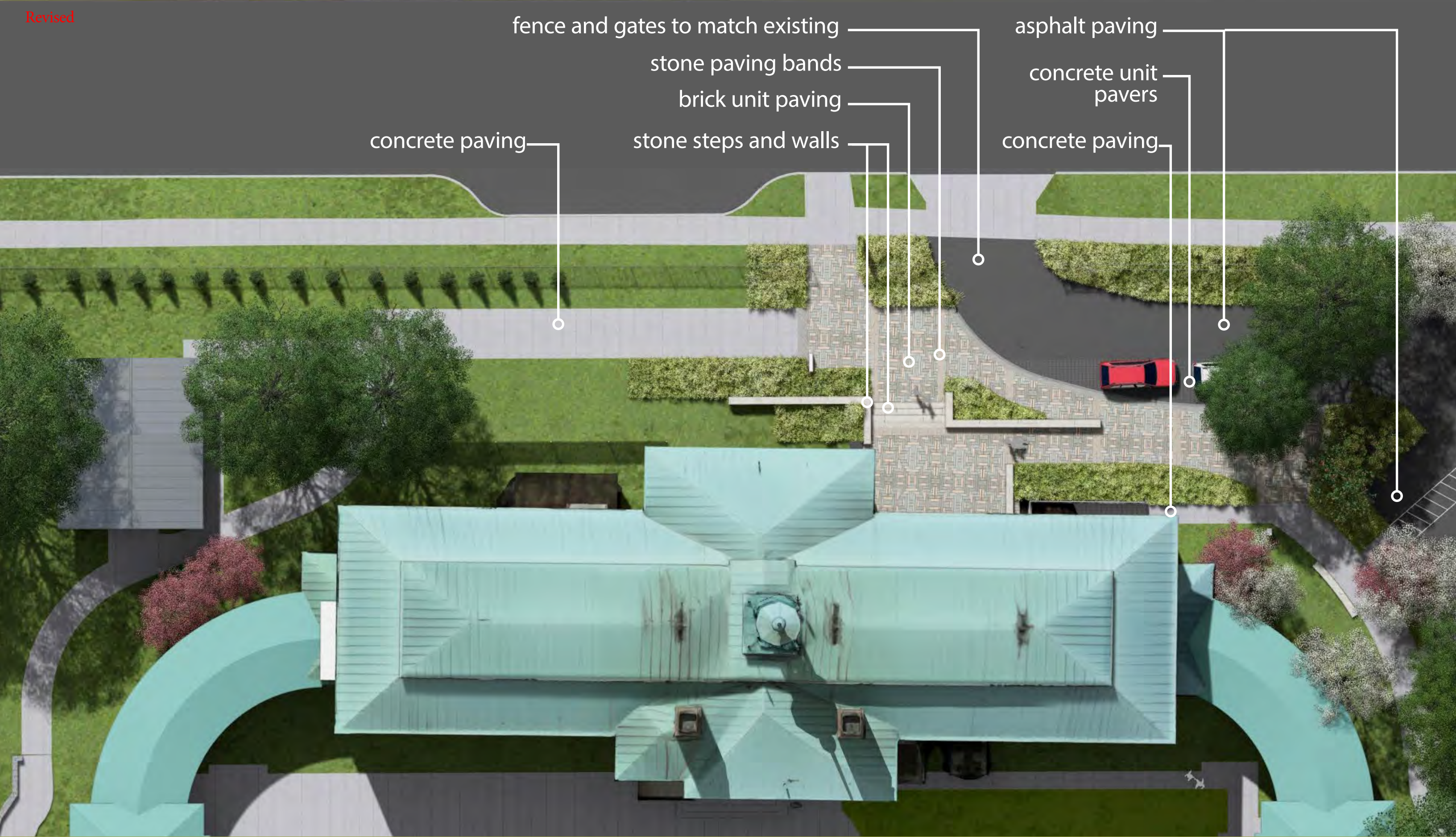
VEHICULAR ENTRANCE DRIVE

PEDESTRIAN ENTRY

ENTRY PLAZA AND DROP-OFF

AMERICAN SWEDISH HISTORICAL MUSEUM

BUILDING & CAMPUS ENTRY IMPROVEMENTS



SITE MATERIALS

AMERICAN SWEDISH HISTORICAL MUSEUM

BUILDING & CAMPUS ENTRY IMPROVEMENTS



concrete unit pavers

asphalt paving

truncated dome paver

stone paving bands

stone steps and walls

brick unit paving

SITE MATERIALS

AMERICAN SWEDISH HISTORICAL MUSEUM

BUILDING & CAMPUS ENTRY IMPROVEMENTS



existing building facade



brick unit paving against building faade



brick unit paving & stone banding example



existing site features



clad stone wall example

Brick Unit Paving

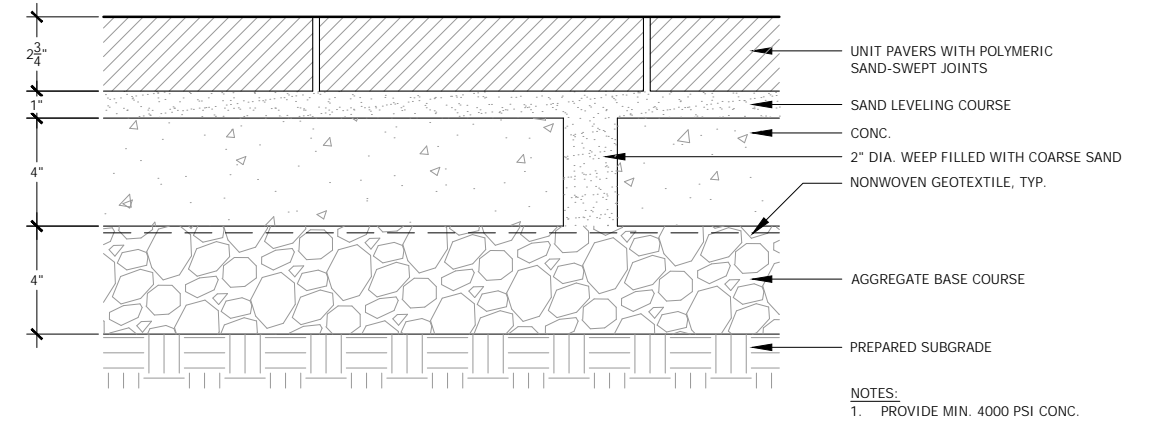
Vendor: Belden Brick

Product: Clay Paver

Color Blend: 85% 8530 and 15% Nutmeg Clear

Finish: Wire Cut

Size: 4" x 8" x 2 3/4"



UNIT PAVEMENT

3" = 1'-0"

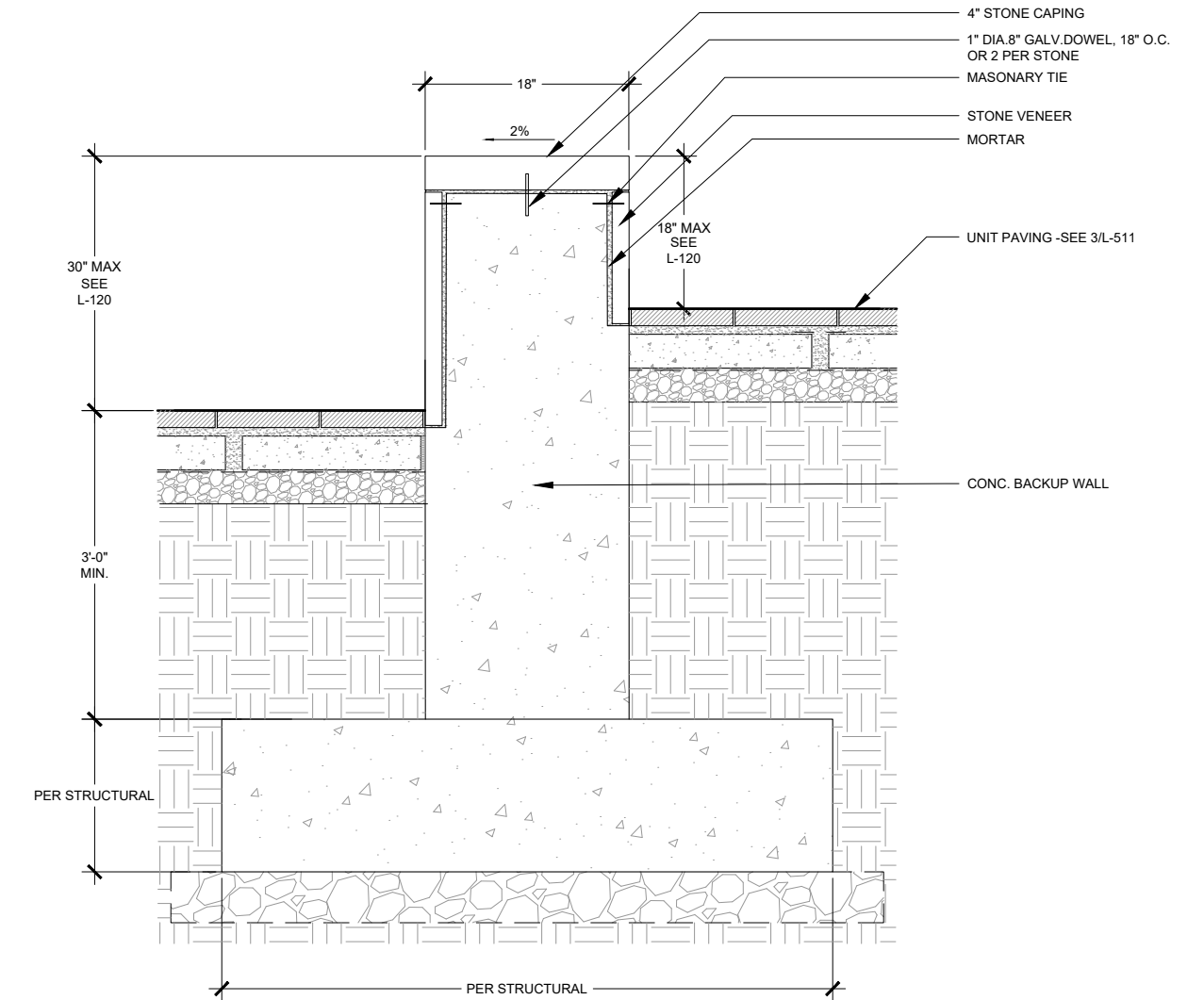
Stone Paving Bands, Steps, and Walls

Vendor: Russel Stone

Product: Quartzitic Sandstone

Color: Bloom Run Stone

Finish: Thermal



STONE VENEER SITE WALL- RETAINING

1" = 1'-0"

Concrete Unit Paving

Vendor: Wasau Tile

Product: Riverside Series

Color: HR-65 & A-10

Size: 12" x 12" x 2 3/4" and 4" x 8" x 2 3/4"





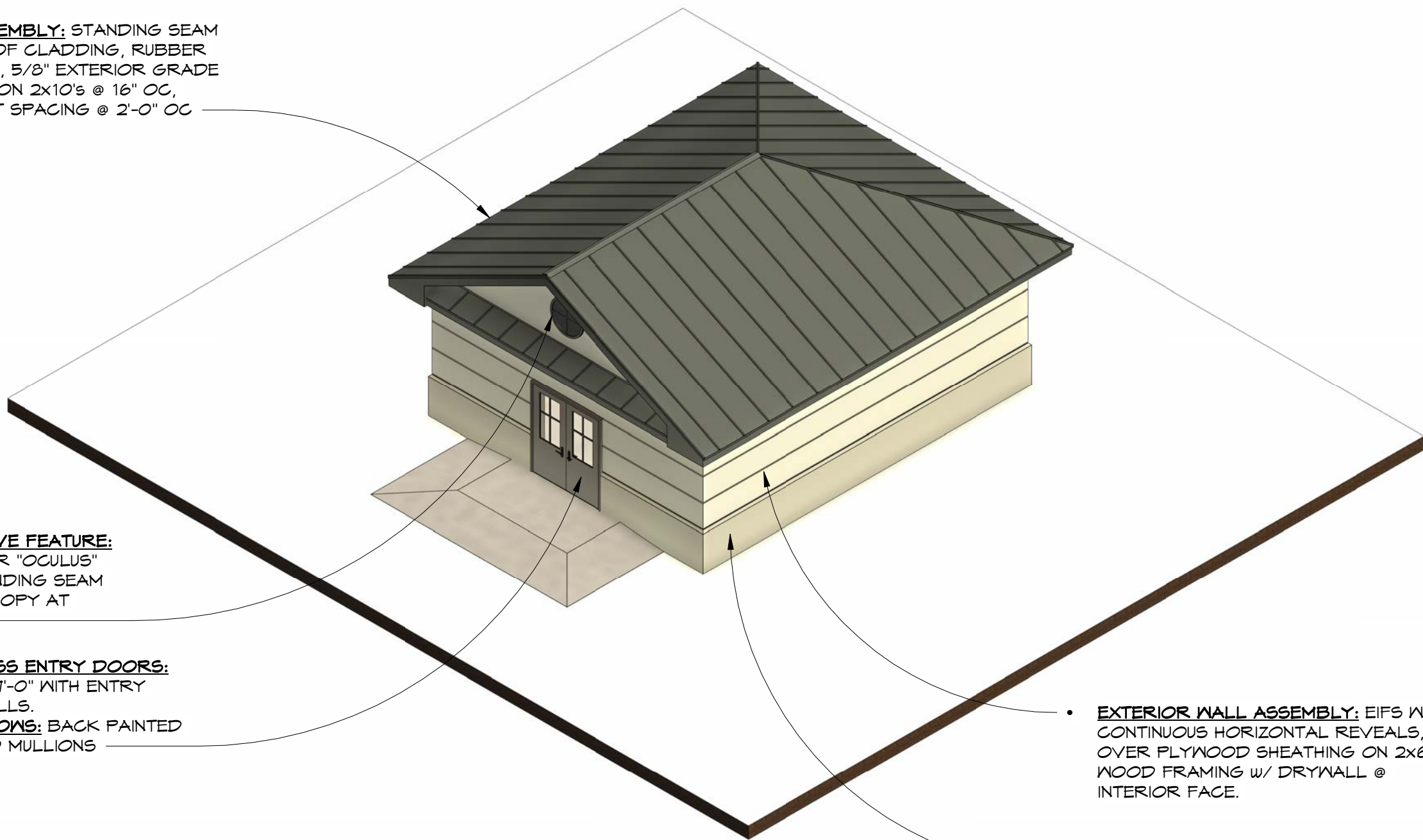
AUXILIARY BUILDING

AMERICAN SWEDISH HISTORICAL MUSEUM
BUILDING & CAMPUS ENTRY IMPROVEMENTS

- **ROOF ASSEMBLY:** STANDING SEAM METAL ROOF CLADDING, RUBBER MEMBRANE, 5/8" EXTERIOR GRADE PLYWOOD ON 2X10'S @ 16" OC, SEAM JOINT SPACING @ 2'-0" OC

- **DECORATIVE FEATURE:** 3' DIAMETER "OCULUS" OVER STANDING SEAM METAL CANOPY AT ENTRY

- **WINDOWLESS ENTRY DOORS:** (2) 3'-0" x 7'-0" WITH ENTRY PLATES/PULLS.
- **FAUX WINDOWS:** BACK PAINTED WITH WOOD MULLIONS



- **EXTERIOR WALL ASSEMBLY:** EIFS W/ CONTINUOUS HORIZONTAL REVEALS, OVER PLYWOOD SHEATHING ON 2X6 WOOD FRAMING W/ DRYWALL @ INTERIOR FACE.

- **EXT. WALL BASE:** 36" H. TO BE 2" THICK "PANZER-MESH" EIFS

*REFER TO 'MATERIALS VISION BOARD' FOR MATERIAL AND COLOR SELECTIONS

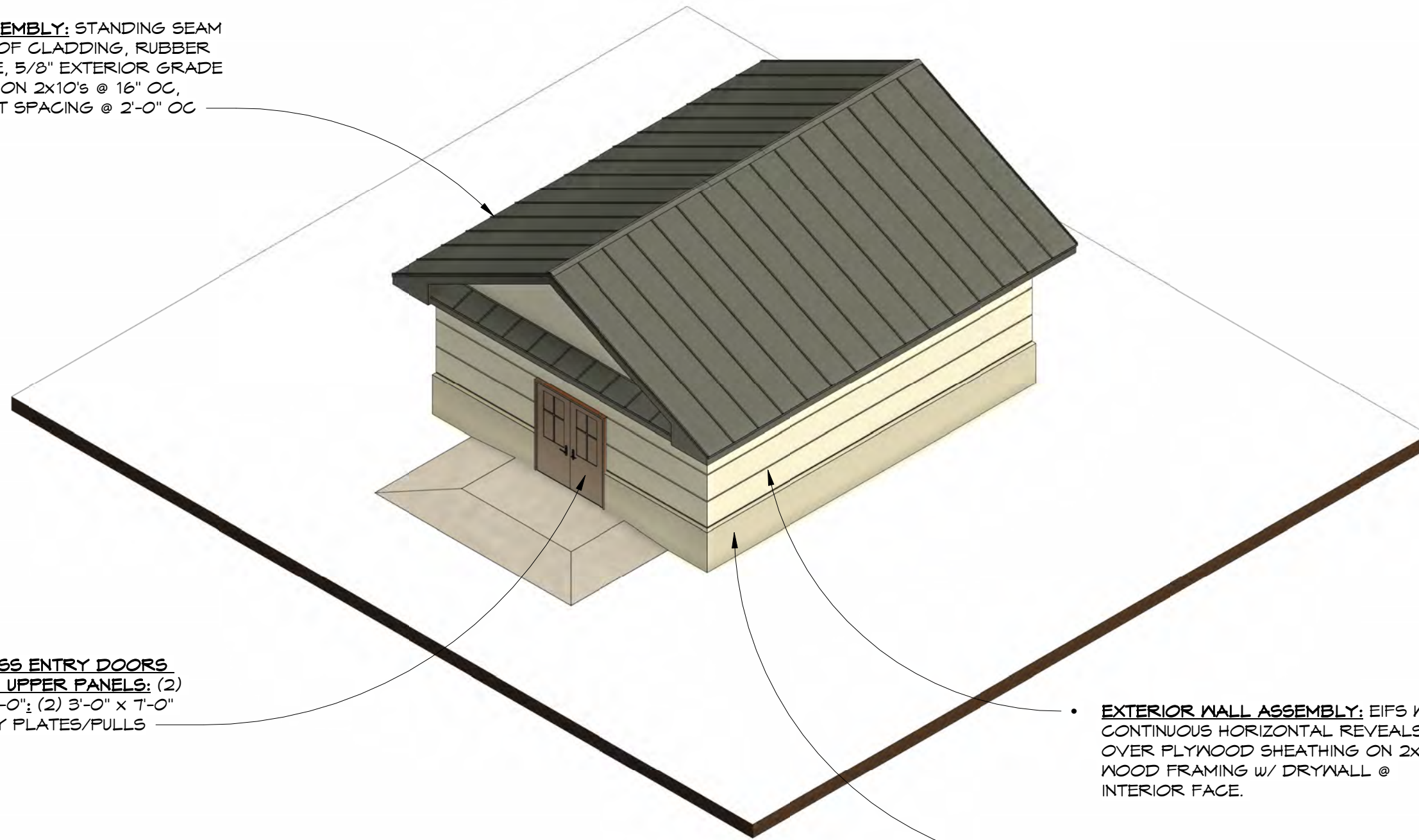
3D Model (w/ Material Annotation)	
Project Number:	
Scale:	
Date:	06.05.2026
Drawn By:	WAB

WULFF ARCHITECTS, INC.
 1515 LOCUST STREET, 2ND FLOOR
 PHILADELPHIA, PA 19102
 T: 215.985.6100 F: 215.985.4104
 W: WWW.WULFFARCHITECTS.COM



Storage Pavilion
 1900 Pattison Ave, Philadelphia, PA 19145

- **ROOF ASSEMBLY:** STANDING SEAM METAL ROOF CLADDING, RUBBER MEMBRANE, 5/8" EXTERIOR GRADE PLYWOOD ON 2X10's @ 16" OC, SEAM JOINT SPACING @ 2'-0" OC



- **WINDOWLESS ENTRY DOORS W/ RAISED UPPER PANELS:** (2) @ 3'-0" x 7'-0"; (2) 3'-0" x 7'-0" WITH ENTRY PLATES/PULLS

- **EXTERIOR WALL ASSEMBLY:** EIFS W/ CONTINUOUS HORIZONTAL REVEALS, OVER PLYWOOD SHEATHING ON 2X6 WOOD FRAMING W/ DRYWALL @ INTERIOR FACE.

- **EXT. WALL BASE:** 36" H. TO BE 2" THICK "PANZER-MESH" EIFS

*REFER TO 'MATERIALS VISION BOARD' FOR MATERIAL AND COLOR SELECTIONS

Storage Pavilion

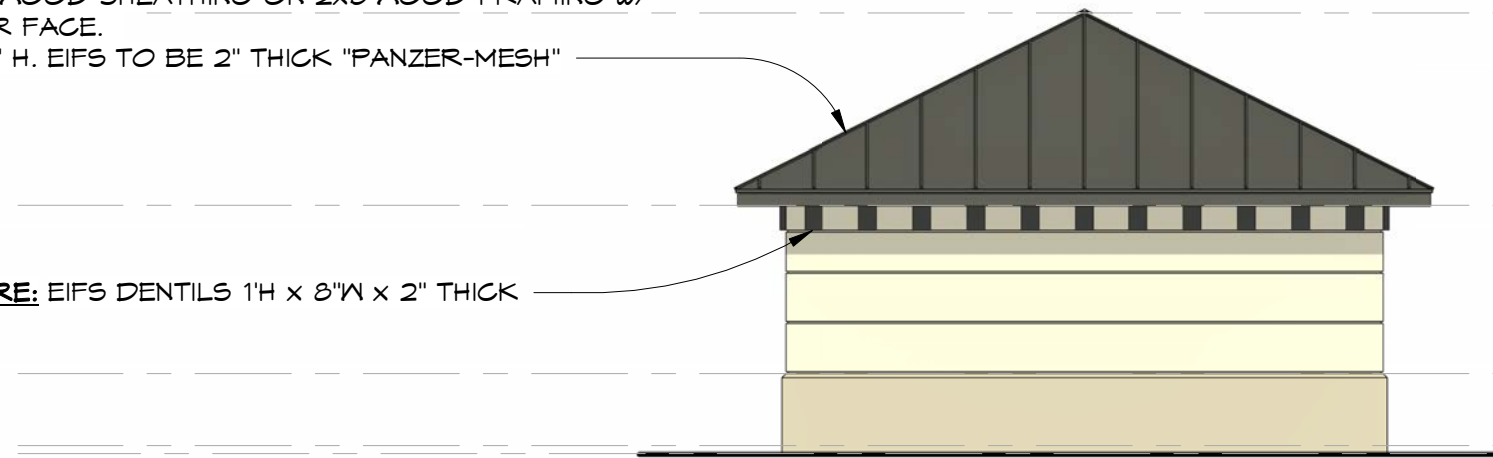
1900 Pattison Ave, Philadelphia, PA 19145



3D Model (w/ Material Annotation)

Project Number: _____
 Scale: _____
 Date: 06.30.2026
 Drawn By: WAB

- **ROOF ASSEMBLY:** STANDING SEAM METAL ROOF CLADDING, RUBBER MEMBRANE, 5/8" EXTERIOR GRADE PLYWOOD ON 2x10's @ 16" OC, SEAM JOINT SPACING @ 2'-0" OC
- **EXTERIOR WALL ASSEMBLY:** EIFS W/ CONTINUOUS HORIZONTAL REVEALS, OVER PLYWOOD SHEATHING ON 2x6 WOOD FRAMING W/ DRYWALL @ INTERIOR FACE.
- **EXT. WALL BASE:** 36" H. EIFS TO BE 2" THICK "PANZER-MESH"



T.O. RIDGE
18' - 0"

B.O. EAVE
10' - 0"

T.O. WALL BASE
3' - 0"

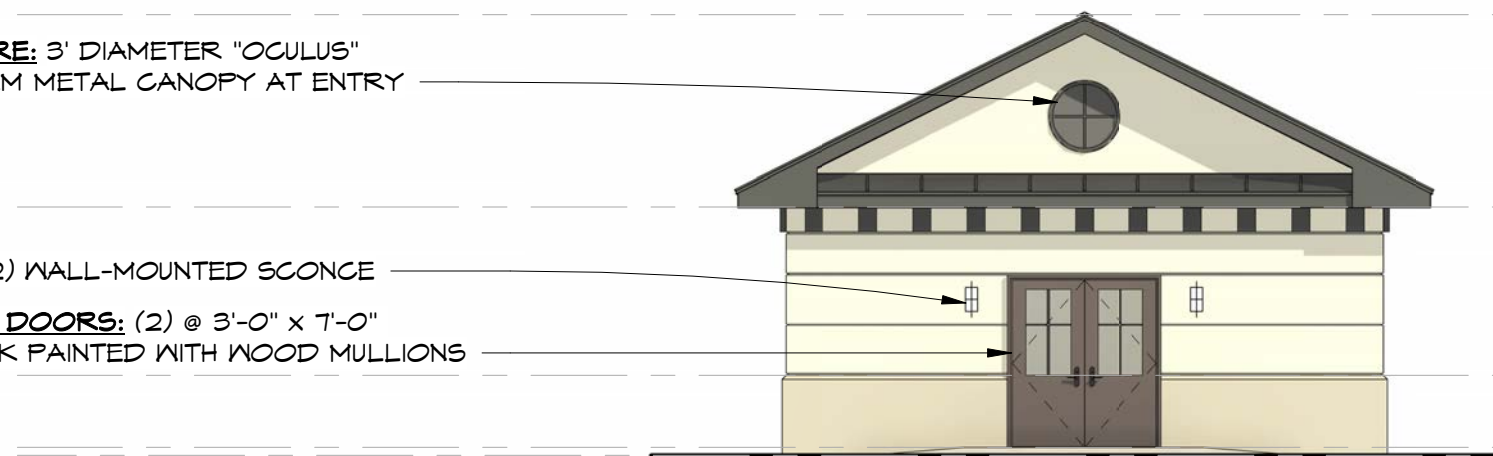
FINISH FLOOR
0' - 0"

GRADE
-0' - 4"

T.O. FOOTING
-3' - 0"

1 North
SK-2 1/8" = 1'-0"

- **DECORATIVE FEATURE:** 3' DIAMETER "OCULUS" OVER STANDING SEAM METAL CANOPY AT ENTRY



T.O. RIDGE
18' - 0"

B.O. EAVE
10' - 0"

T.O. WALL BASE
3' - 0"

FINISH FLOOR
0' - 0"

GRADE
-0' - 4"

T.O. FOOTING
-3' - 0"

2 South
SK-2 1/8" = 1'-0"

- **ACCENT LIGHTING:** (2) WALL-MOUNTED SCONCE
- **WINDOWLESS ENTRY DOORS:** (2) @ 3'-0" x 7'-0"
- **FAUX WINDOWS:** BACK PAINTED WITH WOOD MULLIONS

North & South Ext. Elevations
(w/ Material Annotation)

Scale: 1/8" = 1'-0"
Date: 06.05.2026
Drawn by: WAB

WULF ARCHITECTS, INC.
1515 LOCUST STREET, 2ND FLOOR
PHILADELPHIA, PA 19102
T: 215.585.1500 F: 215.585.4104
W: WWW.WULFARCHITECTS.COM



Storage Pavilion
1900 Pattison Ave, Philadelphia, PA 19145

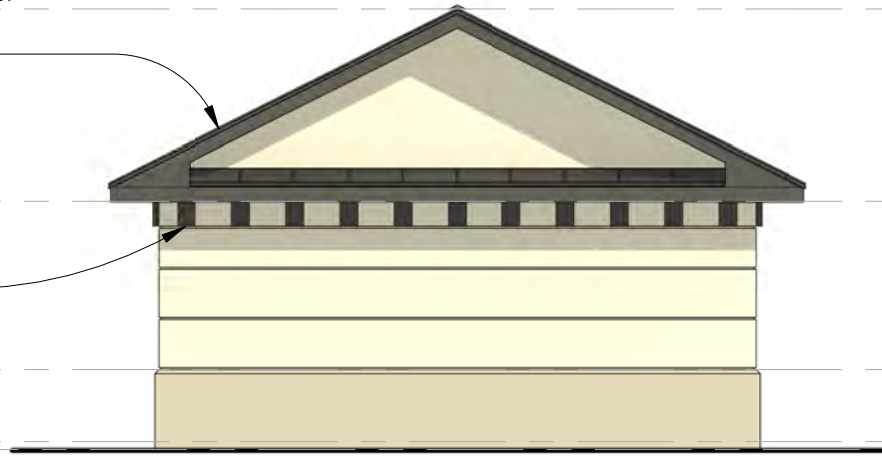
SK-2

*REFER TO 'MATERIALS VISION BOARD' FOR MATERIAL AND COLOR SELECTIONS

- **ROOF ASSEMBLY:** STANDING SEAM METAL ROOF CLADDING, RUBBER MEMBRANE, 5/8" EXTERIOR GRADE PLYWOOD ON 2x10's @ 16" OC, SEAM JOINT SPACING @ 2'-0" OC
- **EXTERIOR WALL ASSEMBLY:** EIFS W/ CONTINUOUS HORIZONTAL REVEALS, OVER PLYWOOD SHEATHING ON 2x6 WOOD FRAMING W/ DRYWALL @ INTERIOR FACE.
- **EXT. WALL BASE:** 36" H. EIFS TO BE 2" THICK "PANZER-MESH"

- **DECORATIVE FEATURE:** EIFS DENTILS 1'H x 8"W x 2" THICK

1 North
SK-2 1/8" = 1'-0"



T.O. RIDGE
18' - 0"

B.O. EAVE
10' - 0"

T.O. WALL BASE
3' - 0"

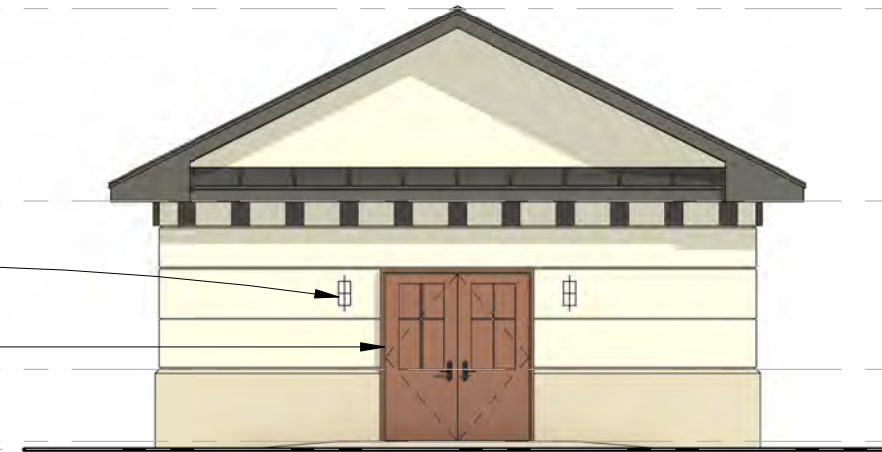
FINISH FLOOR
0' - 0"

GRADE
-0' - 4"

T.O. FOOTING
-3' - 0"

- **ACCENT LIGHTING:** (2) WALL-MOUNTED SCONCE
- **WINDOWLESS ENTRY DOORS W/ RAISED UPPER PANELS:** (2) @ 3'-0" x 7'-0"

2 South
SK-2 1/8" = 1'-0"



T.O. RIDGE
18' - 0"

B.O. EAVE
10' - 0"

T.O. WALL BASE
3' - 0"

FINISH FLOOR
0' - 0"

GRADE
-0' - 4"

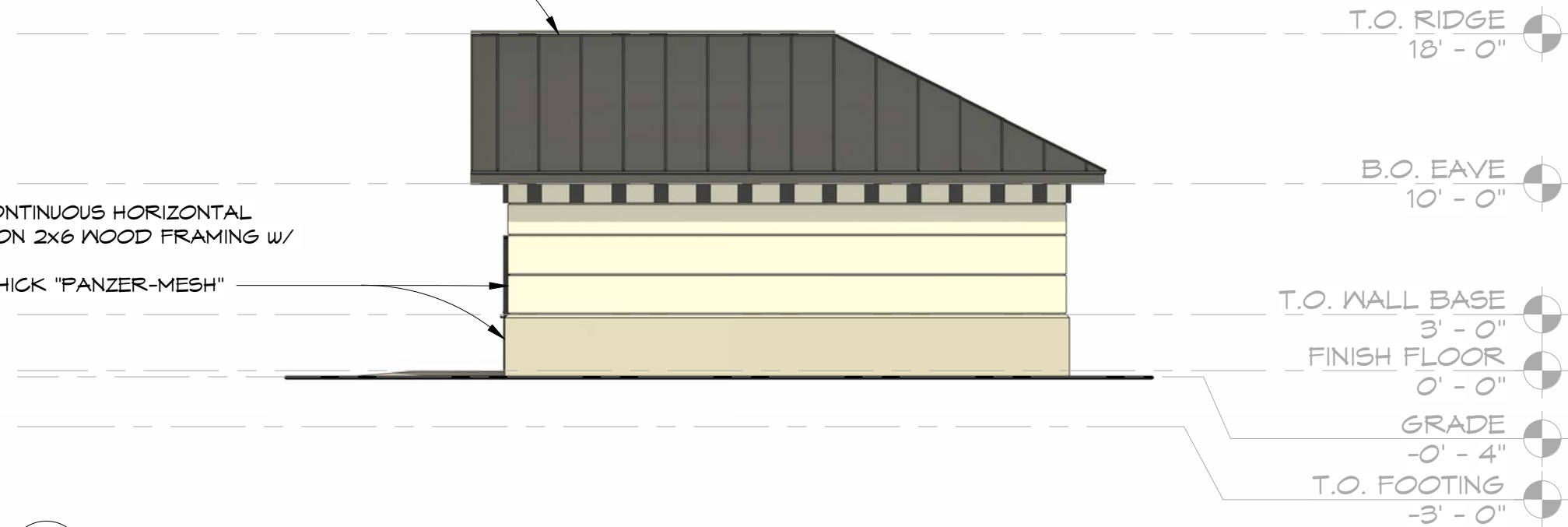
T.O. FOOTING
-3' - 0"



*REFER TO 'MATERIALS VISION BOARD' FOR MATERIAL AND COLOR SELECTIONS

- **ROOF ASSEMBLY:** STANDING SEAM METAL ROOF CLADDING, RUBBER MEMBRANE, 5/8" EXTERIOR GRADE PLYWOOD ON 2x10's @ 16" OC, SEAM JOINT SPACING @ 2'-0" OC

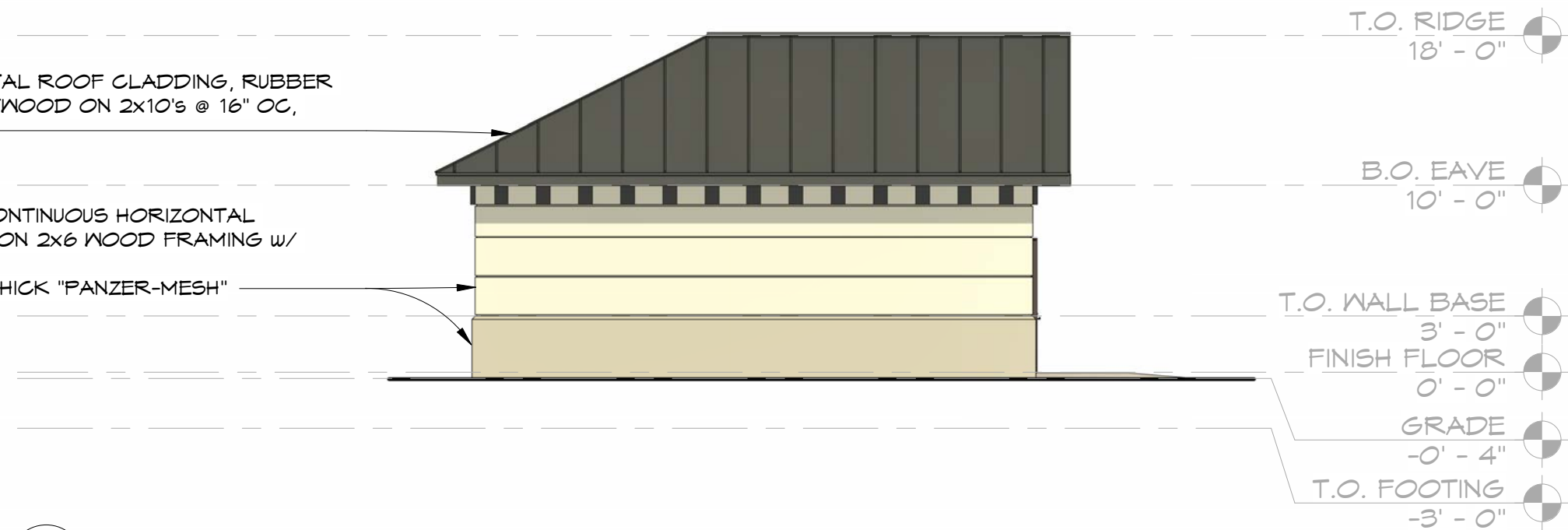
- **EXTERIOR WALL ASSEMBLY:** EIFS W/ CONTINUOUS HORIZONTAL REVEALS, OVER PLYWOOD SHEATHING ON 2x6 WOOD FRAMING w/ DRYWALL @ INTERIOR FACE
- **EXT. WALL BASE:** 36" H. EIFS TO BE 2" THICK "PANZER-MESH"



1 East
SK-3 1/8" = 1'-0"

- **ROOF ASSEMBLY:** STANDING SEAM METAL ROOF CLADDING, RUBBER MEMBRANE, 5/8" EXTERIOR GRADE PLYWOOD ON 2x10's @ 16" OC, SEAM JOINT SPACING @ 2'-0" OC

- **EXTERIOR WALL ASSEMBLY:** EIFS W/ CONTINUOUS HORIZONTAL REVEALS, OVER PLYWOOD SHEATHING ON 2x6 WOOD FRAMING w/ DRYWALL @ INTERIOR FACE
- **EXT. WALL BASE:** 36" H. EIFS TO BE 2" THICK "PANZER-MESH"



2 West
SK-3 1/8" = 1'-0"

*REFER TO 'MATERIALS VISION BOARD' FOR MATERIAL AND COLOR SELECTIONS

East & West Exterior Elevations (w/ Material Annotation)

Scale: 1/8" = 1'-0"
Date: 06.05.2026
Drawn by: WAB

WULF ARCHITECTS, INC.
1515 LOCUST STREET, 2ND FLOOR
PHILADELPHIA, PA 19102
T: 215.985.6000 F: 215.985.4004
W: WWW.WULFARCHITECTS.COM

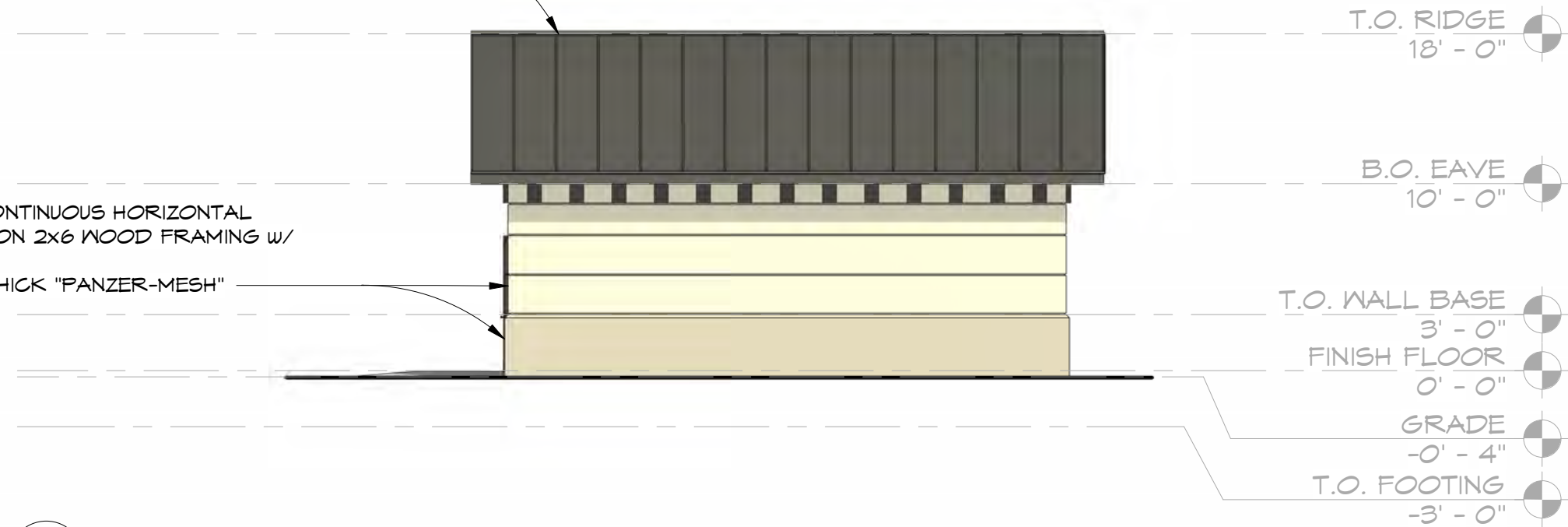


Storage Pavilion
1900 Pattison Ave, Philadelphia, PA 19145

SK-3

- **ROOF ASSEMBLY:** STANDING SEAM METAL ROOF CLADDING, RUBBER MEMBRANE, 5/8" EXTERIOR GRADE PLYWOOD ON 2x10's @ 16" OC, SEAM JOINT SPACING @ 2'-0" OC

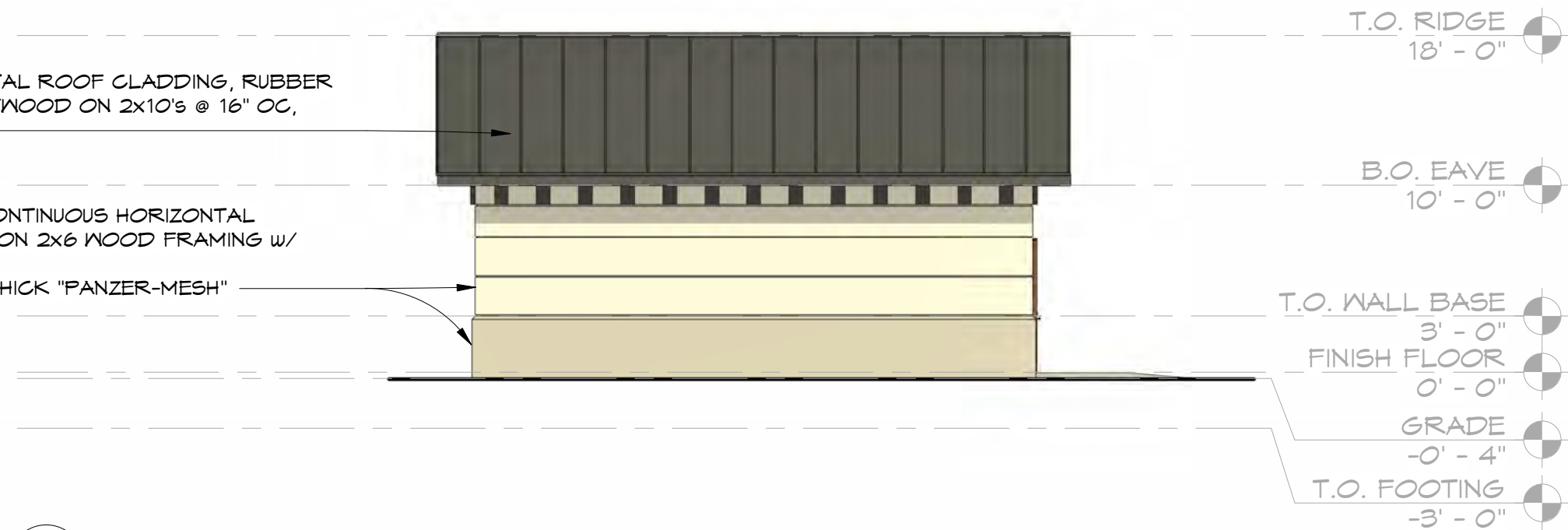
- **EXTERIOR WALL ASSEMBLY:** EIFS W/ CONTINUOUS HORIZONTAL REVEALS, OVER PLYWOOD SHEATHING ON 2x6 WOOD FRAMING w/ DRYWALL @ INTERIOR FACE
- **EXT. WALL BASE:** 36" H. EIFS TO BE 2" THICK "PANZER-MESH"



1 East
SK-3 1/8" = 1'-0"

- **ROOF ASSEMBLY:** STANDING SEAM METAL ROOF CLADDING, RUBBER MEMBRANE, 5/8" EXTERIOR GRADE PLYWOOD ON 2x10's @ 16" OC, SEAM @ 2'-0" OC

- **EXTERIOR WALL ASSEMBLY:** EIFS W/ CONTINUOUS HORIZONTAL REVEALS, OVER PLYWOOD SHEATHING ON 2x6 WOOD FRAMING w/ DRYWALL @ INTERIOR FACE
- **EXT. WALL BASE:** 36" H. EIFS TO BE 2" THICK "PANZER-MESH"



2 West
SK-3 1/8" = 1'-0"

*REFER TO 'MATERIALS VISION BOARD' FOR MATERIAL AND COLOR SELECTIONS

East & West Exterior Elevations (w/ Material Annotation)

Scale: 1/8" = 1'-0"
Date: 06.30.2026
Drawn by: WAB

WULF ARCHITECTS, INC.
1515 LOCUST STREET, 2ND FLOOR
PHILADELPHIA, PA 19102
T: 215.585.1500 F: 215.585.4104
W: WWW.WULFARCHITECTS.COM



Storage Pavilion
1900 Pattison Ave, Philadelphia, PA 19145

SK-3

EXTERIOR WALL ASSEMBLY - EIFS:

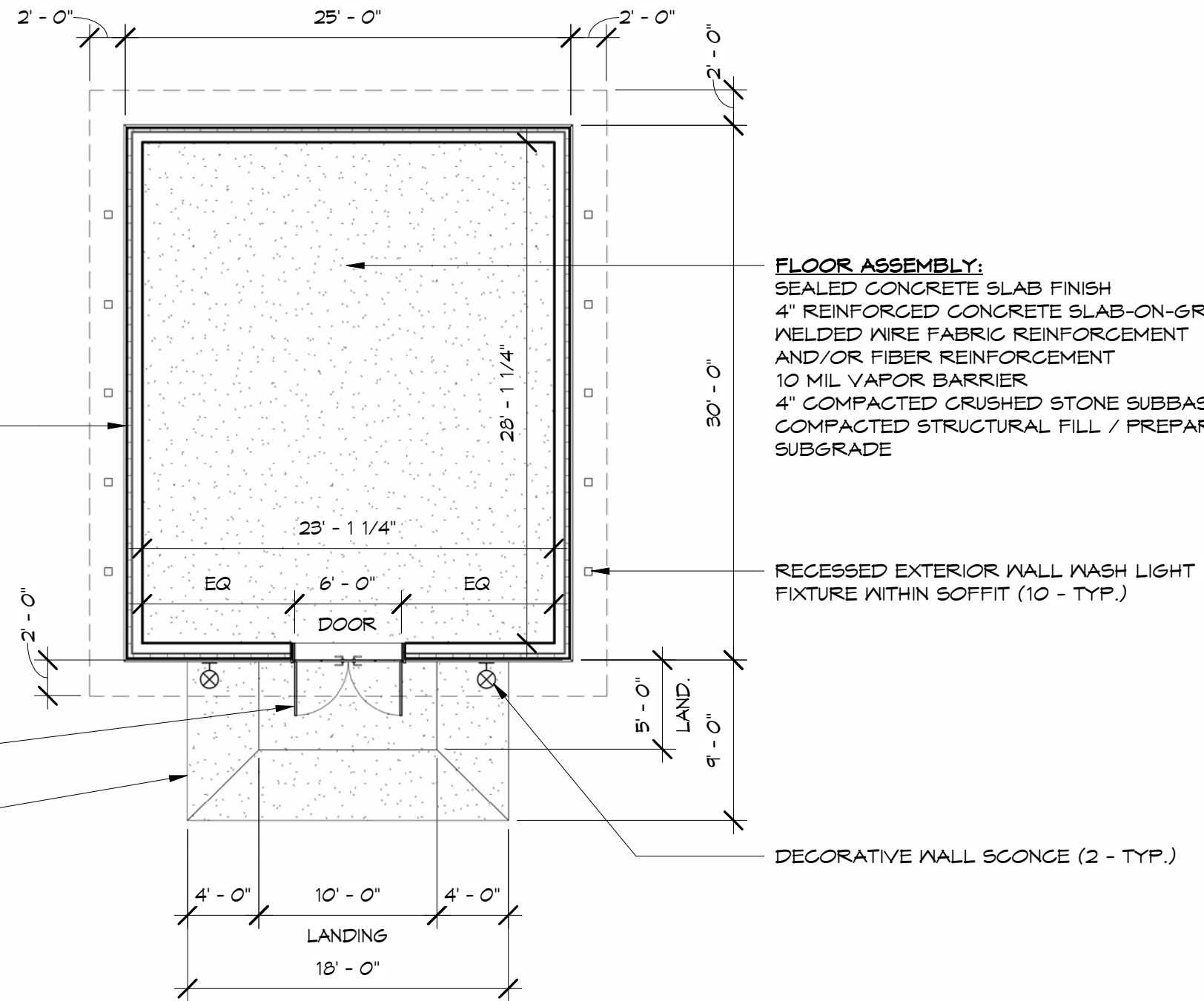
- ACRYLIC EIFS FINISH COAT
- EIFS BASE COAT WITH FIBERGLASS REINFORCING MESH
- 3" EPS CONTINUOUS INSULATION BOARD (DRAINAGE EIFS SYSTEM)
- INTEGRATED DRAINAGE PLANE
- VAPOR-PERMEABLE FLUID-APPLIED WRB / AIR BARRIER
- 1/2" EXTERIOR GYPSUM SHEATHING OR 7/16" OSB SHEATHING
- 2X6 WOOD STUDS @ 16" O.C.
- R-21 MINERAL WOOL BATT INSULATION WITHIN STUD CAVITY
- OPTIONAL SMART VAPOR RETARDER MEMBRANE
- 5/8" GYPSUM WALL BOARD
- INTERIOR LATEX PAINT FINISH

FLOOR ASSEMBLY:

- SEALED CONCRETE SLAB FINISH
- 4" REINFORCED CONCRETE SLAB-ON-GRADE
- WELDED WIRE FABRIC REINFORCEMENT AND/OR FIBER REINFORCEMENT
- 10 MIL VAPOR BARRIER
- 4" COMPACTED CRUSHED STONE SUBBASE
- COMPACTED STRUCTURAL FILL / PREPARED SUBGRADE

WINDOWLESS ENTRY DOORS W/ RAISED UPPER PANELS: (2) @ 3'-0" x 7'-0"

CAST-IN-PLACE CONCRETE PAD WITH SLOPED APPROACH AND LEVEL LANDING



RECESSED EXTERIOR WALL WASH LIGHT FIXTURE WITHIN SOFFIT (10 - TYP.)

DECORATIVE WALL SCONCE (2 - TYP.)

1 Proposed Storage Pavilion
 Floor Plan
 SK-4 1/8" = 1'-0"

Proposed Floor Plan

WULF ARCHITECTS, INC.
 1515 LOCUST STREET, 2ND FLOOR
 PHILADELPHIA, PA 19102
 T: 215.585.1500 F: 215.585.4104
 W: WWW.WULFARCHITECTS.COM

Storage Pavilion
 1900 Pattison Ave, Philadelphia, PA 19145

SK-4

Scale: 1/8" = 1'-0"
 Project Number: -
 Date: 06.30.2026
 Drawn by: WAB

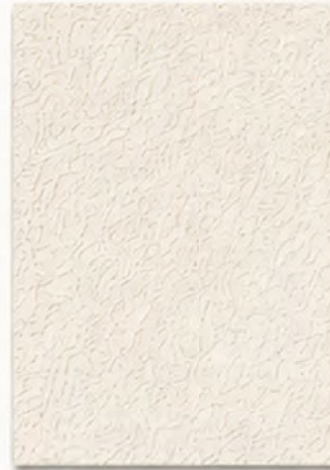
Materials Vision Board

American Swedish Historical Museum – Storage Pavilion

A coordinated exterior palette inspired by the existing museum campus.



ASH GRAY STANDING SEAM
METAL ROOF



WARM IVORY
EIFS / DRYVIT



PANZER-MESH
EIFS BASE



WOOD FINISH –
DOORS



BRONZE ENTRY
HARDWARE



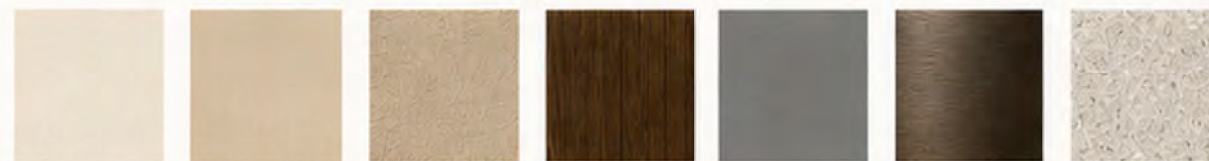
CONCRETE WALK /
ENTRY PAVING



DECORATIVE EIFS
DENTIL



EXISTING MUSEUM
FACADE –
PALETTE INSPIRATION



Visuals shown are representative of material selections and design intent only. Refer to the architectural drawings for architectural elements, assemblies, and installation requirements.

Materials Vision Board

WULFF ARCHITECTS, INC.
1515 LOCUST STREET, 2ND FLOOR
PHILADELPHIA, PA 19102
T: 215.585.6500 F: 215.585.4104
W: WWW.WULFFARCHITECTS.COM

Storage Pavilion
1900 Pattison Ave, Philadelphia, PA 19145

SK-5

Project Number:

Scale:

Date: 06.30.2026

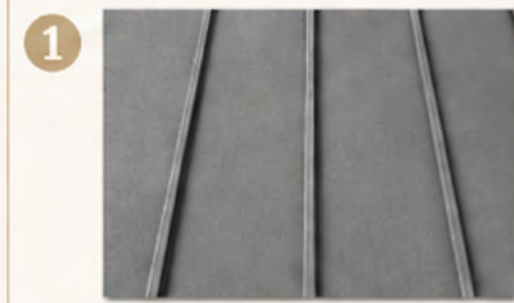
Drawn by:

WAB

Basis of Design

American Swedish Historical Museum – Storage Pavilion

Representative basis of design vendors and products aligned with the approved material vision board.



1

Standing Seam Metal Roof

Vendor: McElroy Metal
Product: 138T Standing Seam Roof Panel
Finish / Notes: PVDF finish, color "Ash Gray", concealed-fastener standing seam profile.



2

Primary Wall Finish

Vendor: Dryvit
Product: Outsulation® Plus MD System
Finish / Notes: DPR Finish in a custom warm ivory tone; exterior insulation and finish system with moisture drainage.



3

Base Wall Finish

Vendor: Dryvit
Product: Genesis® base coat with Panzer 20 Mesh
Finish / Notes: impact-resistant EIFS base zone in a slightly darker complementary tone.



4

Doors

Vendor: Marvin
Product: Ultimate Wood Swinging French Door
Finish / Notes: stained wood exterior



5

Entry Hardware

Vendor: Emtek
Product: Durango Leverset
Finish / Notes: Oil Rubbed Bronze finish; warm metal hardware coordinated with the wood entry doors.



6

Walks and Entry Paving

Vendor: Hanover Architectural Products
Product: Prest® Pavers
Finish / Notes: light neutral architectural concrete pavers with a durable textured walking surface.



7

Decorative EIFS Dentil

Vendor: Dryvit + Fypon
Product: Dryvit® Architectural Shapes
Finish / Notes: decorative dentil band



Visuals shown are representative of material selections and design intent only. Refer to the architectural drawings for architectural elements, assemblies, and installation requirements.

Architectural Elements -
Basis of Design

Project Number: -

Scale: -

Date: 06.30.2026

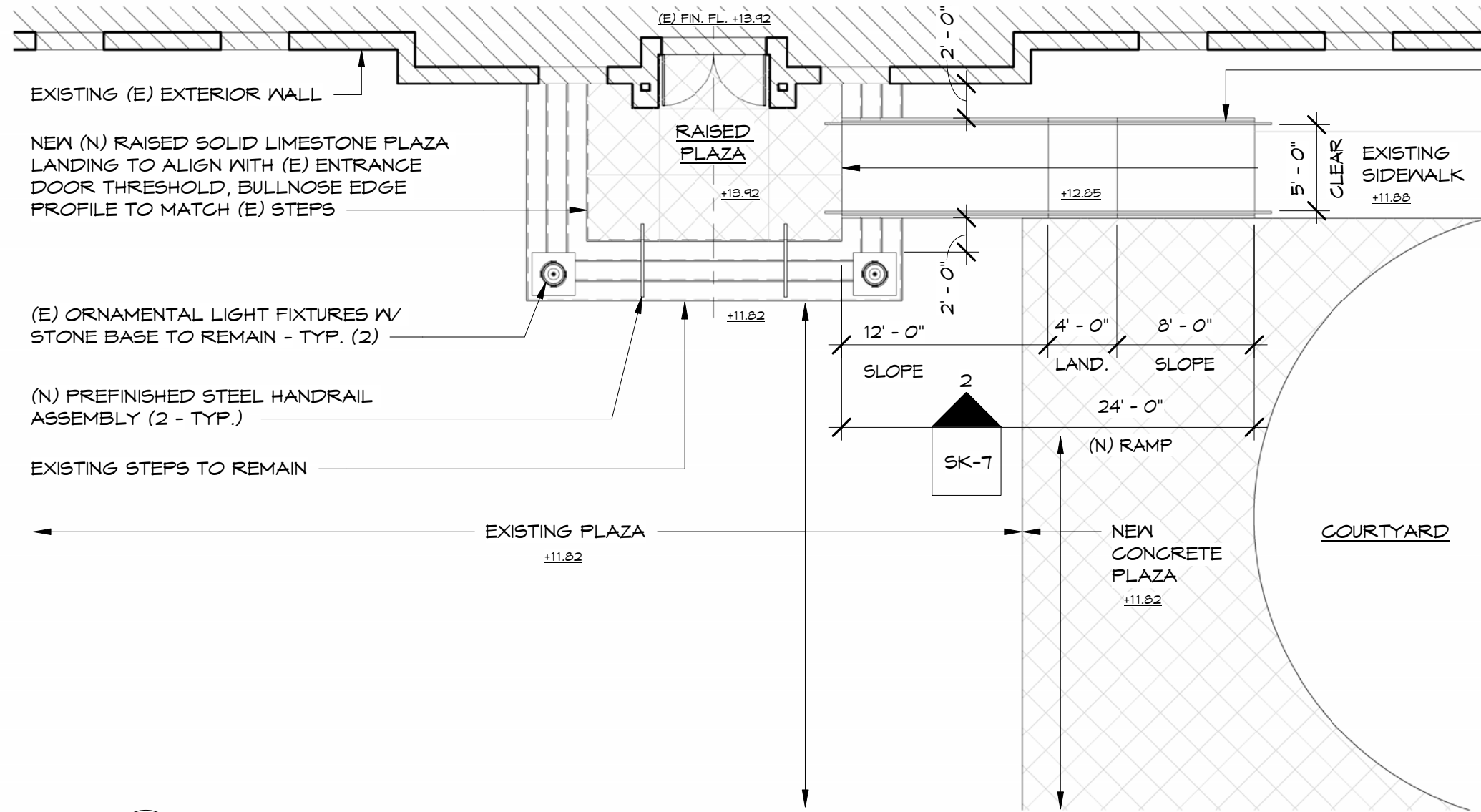
Drawn By: WAB

WULF ARCHITECTS, INC.
1515 LOCUST STREET, 2ND FLOOR
PHILADELPHIA, PA 19102
T: 215.585.6500 F: 215.585.4104
W: WWW.WULFARCHITECTS.COM



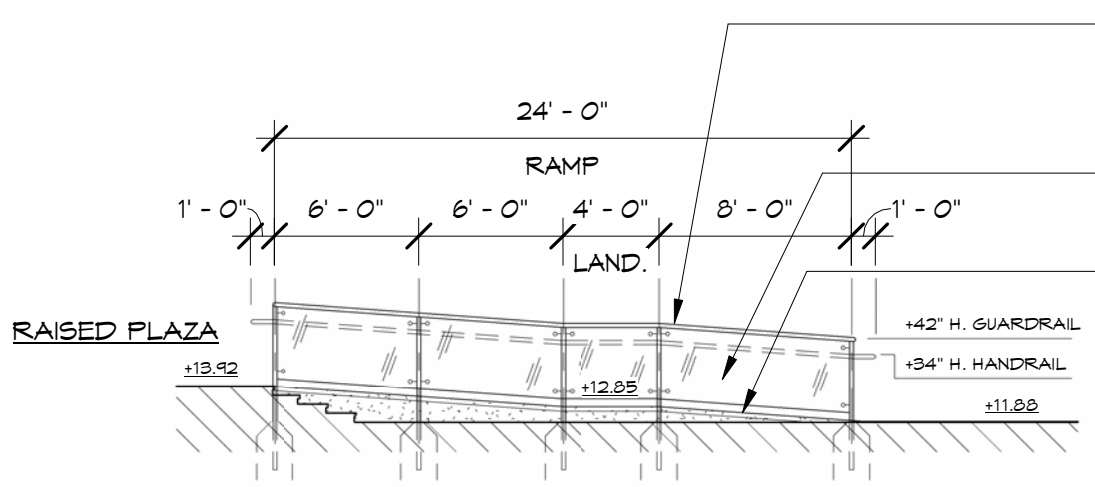
Storage Pavilion
1900 Pattison Ave, Philadelphia, PA 19145

SK-6



(N) CONCRETE RAMP WITH 2" OVERHANG AND INTERMEDIATE LANDING, TURNED-DOWN EDGES AND SOLID FILL BELOW RAMP SLAB, PROVIDE BLACK PREFINISHED STEEL GUARDRAIL/HANDRAIL ASSEMBLY WITH CAP RAIL AND FITTINGS; PROVIDE HANDRAILS AT BOTH SIDE, 1/2" THICK UV-RESISTANT EXTERIOR-GRADE CLEAR ACRYLIC PANELS

1 Plan @ Entry Plaza Ramp
SK-7 1/8" = 1'-0"



2 Elevation @ Accessible Ramp
SK-7 1/8" = 1'-0"

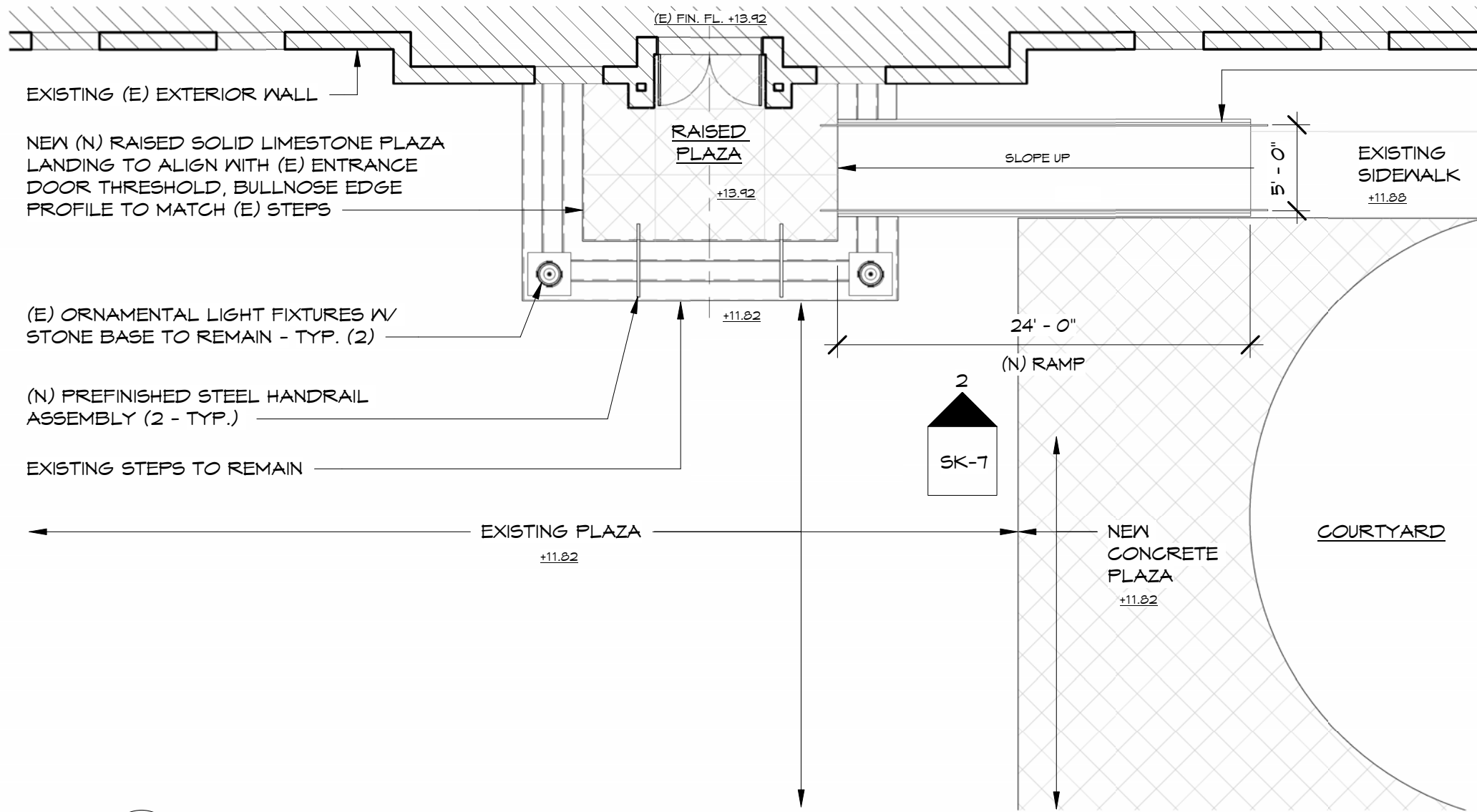
*REFER TO 'MATERIALS VISION BOARD' FOR MATERIAL AND COLOR SELECTIONS

Accessible Ramp, Existing Plaza Expansion & Raised Landing
Project Number: 1/8" = 1'-0"
Date: 06.05.2026
Drawn By: WAB

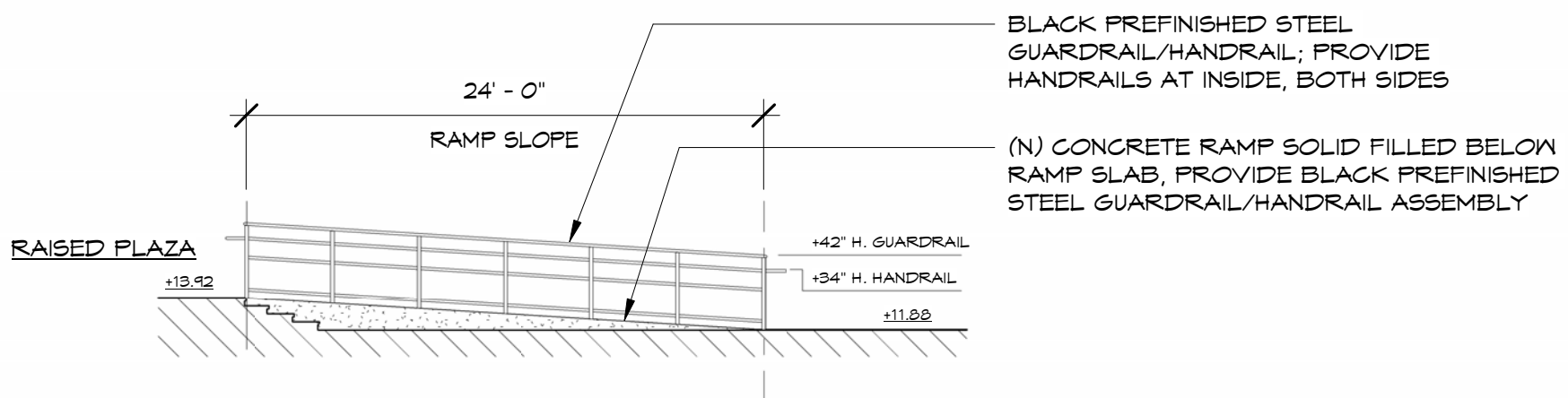
WULFF ARCHITECTS, INC.
1515 LOCUST STREET, 2ND FLOOR
PHILADELPHIA, PA 19102
T: 215.585.1600 F: 215.585.4104
W: WWW.WULFFARCHITECTS.COM

ACCESSIBLE RAMP
1900 Pattison Ave, Philadelphia, PA 19145

SK-7



1 Plan @ Entry Plaza Ramp
SK-7 1/8" = 1'-0"



2 Elevation @ Accessible Ramp
SK-7 1/8" = 1'-0"

*REFER TO 'MATERIALS VISION BOARD' FOR MATERIAL AND COLOR SELECTIONS

Accessible Ramp, Existing Plaza Expansion & Raised Landing

Project Number: -
Date: 06.30.2026
Scale: 1/8" = 1'-0"
Drawn by: WAB

WULF ARCHITECTS, INC.
1515 LOCUST STREET, 2ND FLOOR
PHILADELPHIA, PA 19102
T: 215.585.6500 F: 215.585.4104
W: WWW.WULFARCHITECTS.COM

ACCESSIBLE RAMP
1900 Pattison Ave, Philadelphia, PA 19145

SK-7

Materials Vision Board

American Swedish Historical Museum – South Entrance Ramp & Raised Landing

A coordinated exterior palette for the south entrance accessibility improvements.

1



Concrete Ramp

Vendor: Heidelberg Materials

Product: Ready-Mixed Concrete

Finish / Notes: Cast-in-place exterior concrete ramp with broom finish, slip-resistant surface, and saw-cut control joints; color and jointing coordinated with adjacent paving at the south entrance.

2



Pre-finished Black Guardrail and Handrail

Vendor: The Wagner Companies

Product: Custom Steel Pipe Railing System

Finish / Notes: Factory-finished black steel guardrail and handrail assembly with round cap rail and fittings; simple profile compatible with existing black ornamental site elements and appropriate for the museum south entrance.

Visuals shown are representative of material selections and design intent only. Refer to the architectural drawings for architectural elements, assemblies, and installation requirements.

ACCESSIBLE RAMP

1900 Pattison Ave, Philadelphia, PA 19145

WULF ARCHITECTS, INC.
1515 LOCUST STREET, 2ND FLOOR
PHILADELPHIA, PA 19102
T: 215.585.6500 F: 215.585.4104
W: WWW.WULFARCHITECTS.COM

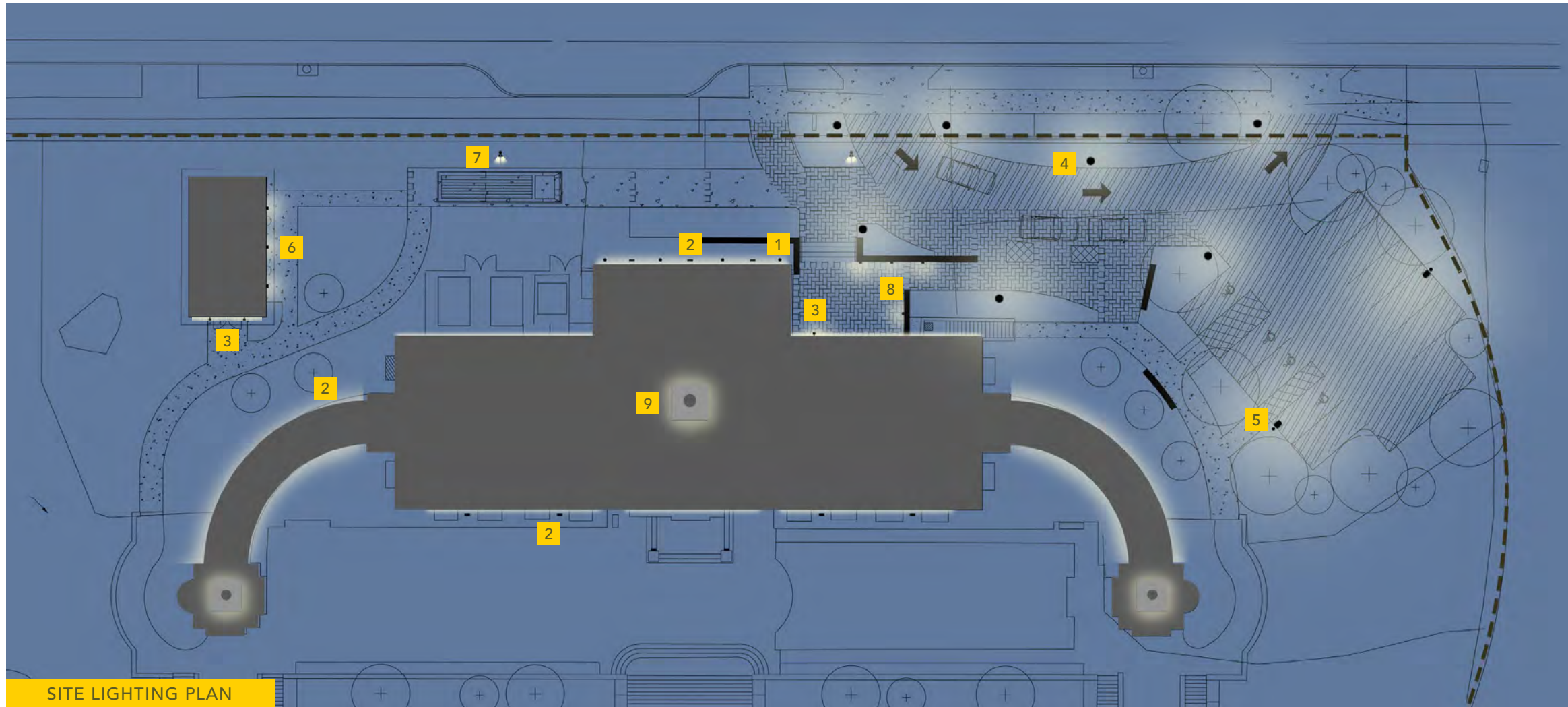
Materials Vision Board

Project Number

Date: 06.30.2026

Drawn By: WAB

SK-8



LIGHTING DESIGN

AMERICAN SWEDISH HISTORICAL MUSEUM BUILDING & CAMPUS ENTRY IMPROVEMENTS



THANK YOU!

AMERICAN SWEDISH HISTORICAL MUSEUM
BUILDING & CAMPUS ENTRY IMPROVEMENTS



TECHNICAL SITE PLAN APPENDIX

AMERICAN SWEDISH HISTORICAL MUSEUM
BUILDING & CAMPUS ENTRY IMPROVEMENTS

