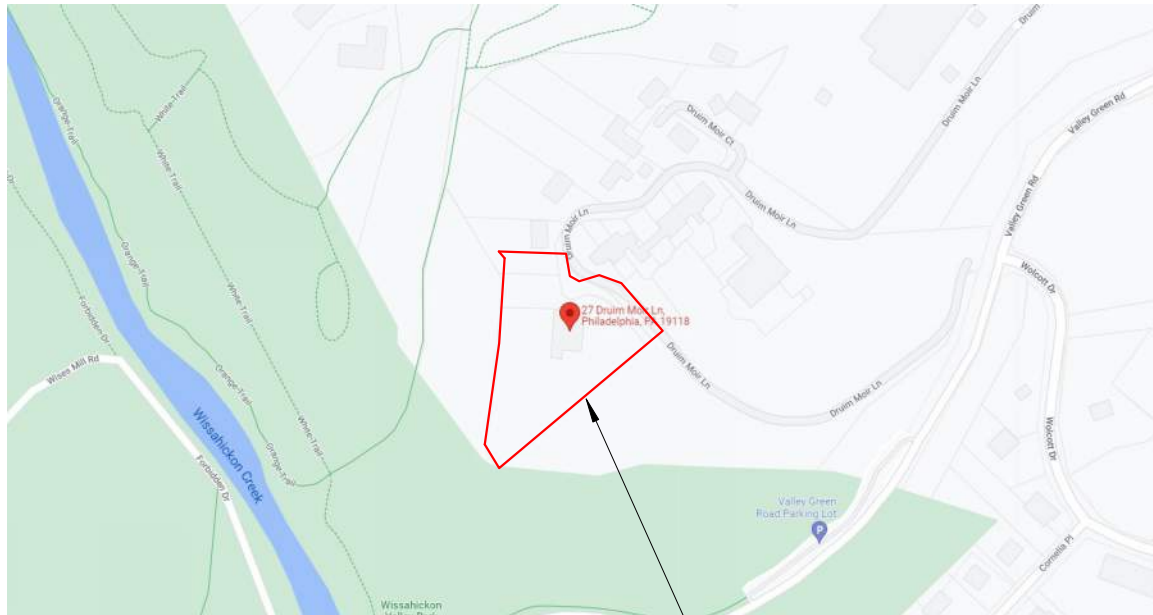


REVISED



PROJECT LOCATION

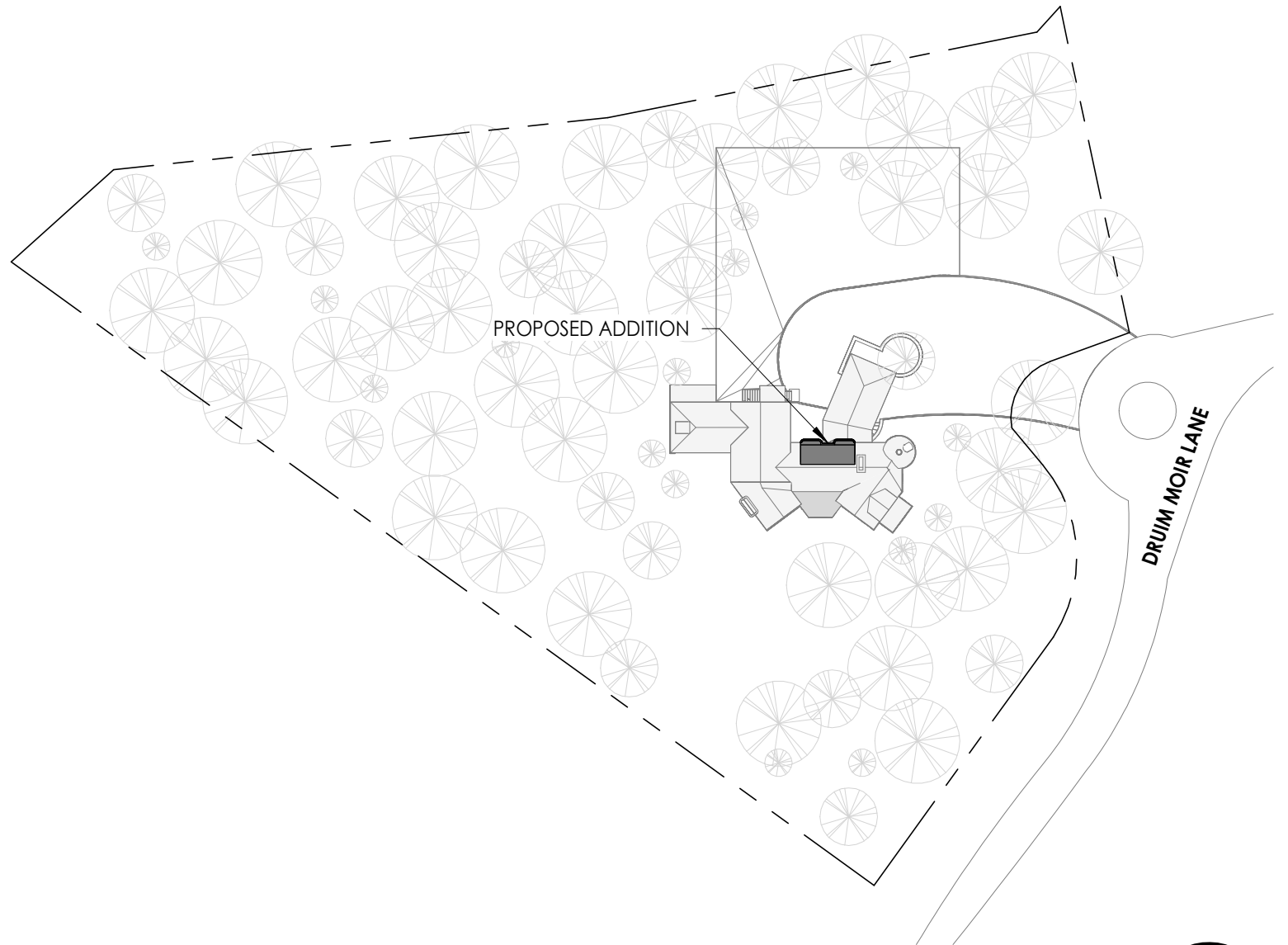
VICINITY MAP



EXISTING CONDITIONS

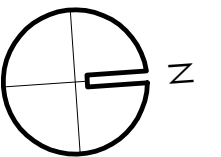
PREFACE:

THE PROPERTY IN QUESTION, 27 DRUIM MOIR LANE, IS A SHINGLE STYLE HOME THAT WAS BUILT IN 1887 BY THE HEWITT BROTHERS FOR SAMUEL HOUSTON. THE PROPOSED SCOPE OF WORK INCLUDES THE CONSTRUCTION OF A DORMER ON THE 3RD FLOOR OF THE RESIDENCE. THE PROPOSED ADDITION WILL PROVIDE THE ADDITIONAL HEAD HEIGHT NECESSARY TO EXTEND THE STAIR CASE UP TO THE THIRD FLOOR AND TRANSFORM THE 3RD FLOOR AREA INTO A USEABLE LIVING SPACE. THIS WILL PROVIDE MORE SQUARE FOOTAGE TO THE HOME. THE FRONT FACADE WILL REMAIN COMPLETELY UNTOUCHED TO PRESERVE HISTORICAL APPEARANCES. THE NEW ADDITION PROPOSES THE USE OF CEDAR WOOD SHINGLES, ALUMINUM-CLAD WINDOW FRAME, ALUMINUM TRIM AND MULLIONS PAINTED TO MATCH ADJACENT WINDOWS.



SITE PLAN

1/64" = 1'-0"



OVERVIEW

HISTORICAL SUBMISSION



DESIGNBLENDZ ARCHITECTURE
4001 MAIN ST, SUITE 203
PHILADELPHIA, PA, 19127

215.995.0228
www.designblendz.com

ORI FEIBUSH
27 DRUIM MOIR LANE
PHILADELPHIA, PA 19118

REVISION:

DATE: 2026.07.01
SCALE: 1/64" = 1'-0"

A-HIST-100

ORIGINAL SHEET - TABLOID (11"x17")
© DESIGNBLENDZ ARCHITECTURE, LLP 2021

REVISED



REAR YARD



SIDE YARD



REAR PATIO



REAR PATIO



HISTORICAL SUBMISSION

DESIGNBLENDZ ARCHITECTURE
4001 MAIN ST, SUITE 203
PHILADELPHIA, PA, 19127

215.995.0228
www.designblendz.com

ORI FEIBUSH
27 DRUIM MOIR LANE
PHILADELPHIA, PA 19118

REVISION:

DATE: 2026.07.01

SCALE:

EXISTING PHOTOS

A-HIST-101

ORIGINAL SHEET - TABLOID (11"x17")
© DESIGNBLENDZ ARCHITECTURE, LLP 2021

REVISED



DRUIM MOIR LN PERSPECTIVE



DRUIM MOIR LN PERSPECTIVE



DRUIM MOIR LN PERSPECTIVE



DRUIM MOIR LN PERSPECTIVE



HISTORICAL SUBMISSION

DESIGNBLENDZ ARCHITECTURE
4001 MAIN ST, SUITE 203
PHILADELPHIA, PA, 19127

215.995.0228
www.designblendz.com

ORI FEIBUSH
27 DRUIM MOIR LANE
PHILADELPHIA, PA 19118

REVISION:

DATE: 2026.07.01

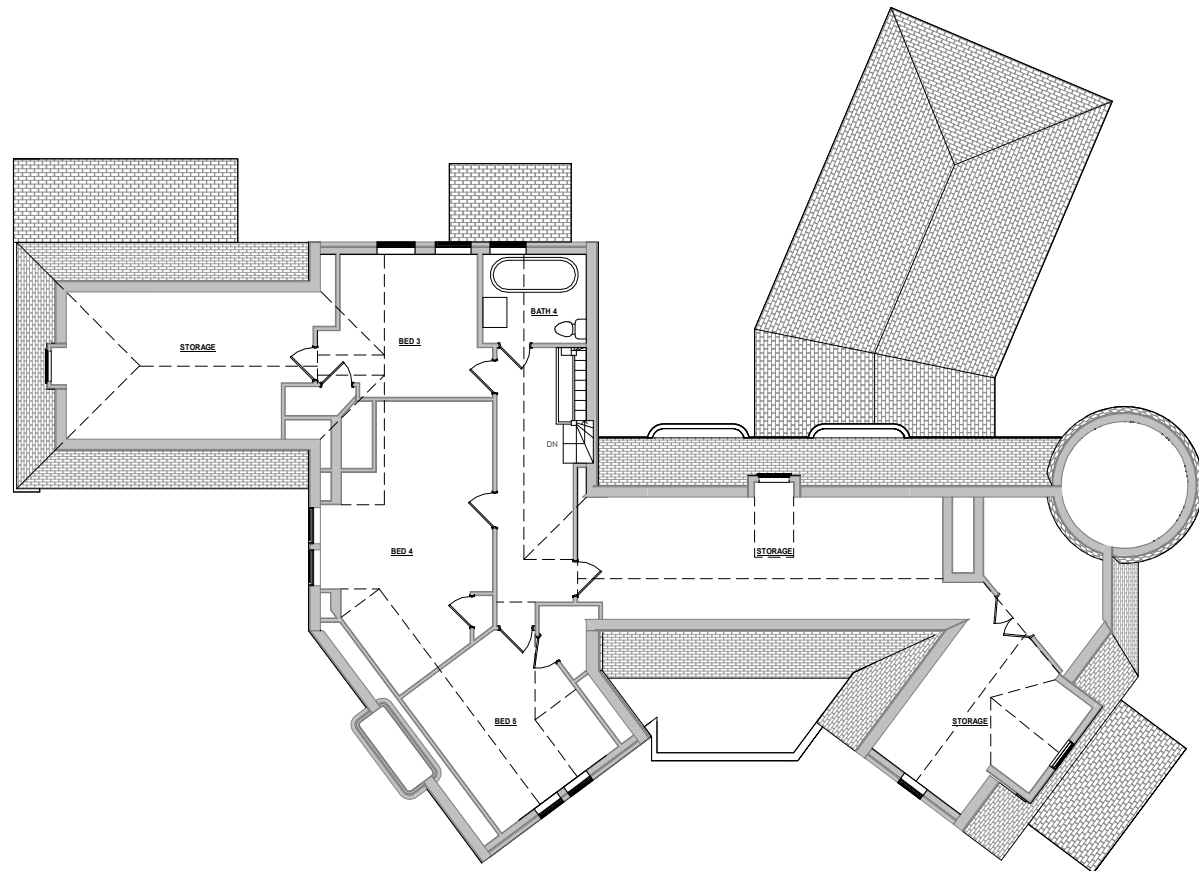
SCALE:

EXISTING PHOTOS

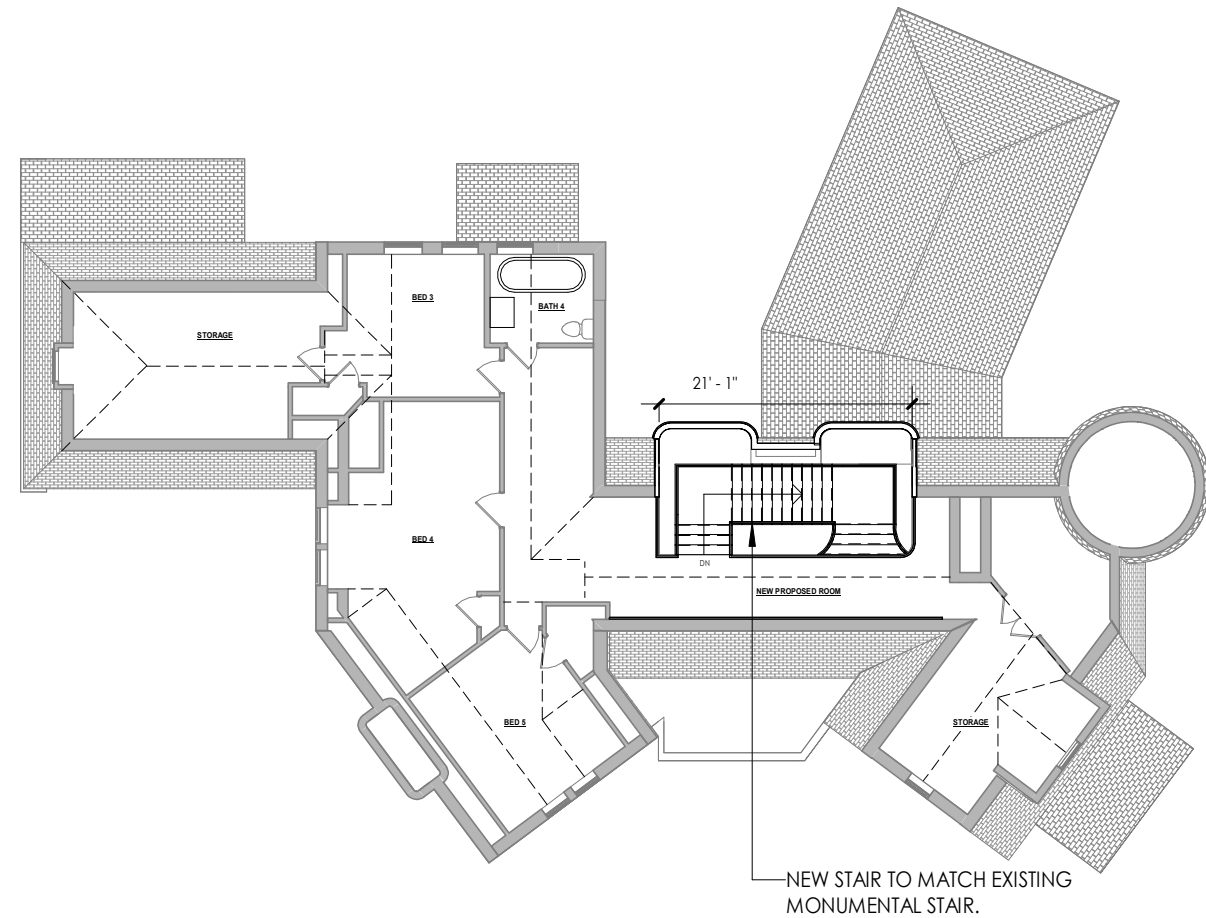
A-HIST-102

ORIGINAL SHEET - TABLOID (11"x17")
© DESIGNBLENDZ ARCHITECTURE, LLP 2021

REVISED



LEVEL 03 EXISTING FLOOR PLAN



LEVEL 03 PROPOSED FLOOR PLAN



HISTORICAL SUBMISSION

DESIGNBLENDZ ARCHITECTURE
4001 MAIN ST, SUITE 203
PHILADELPHIA, PA, 19127

215.995.0228
www.designblendz.com

ORI FEIBUSH
27 DRUIM MOIR LANE
PHILADELPHIA, PA 19118

REVISION:

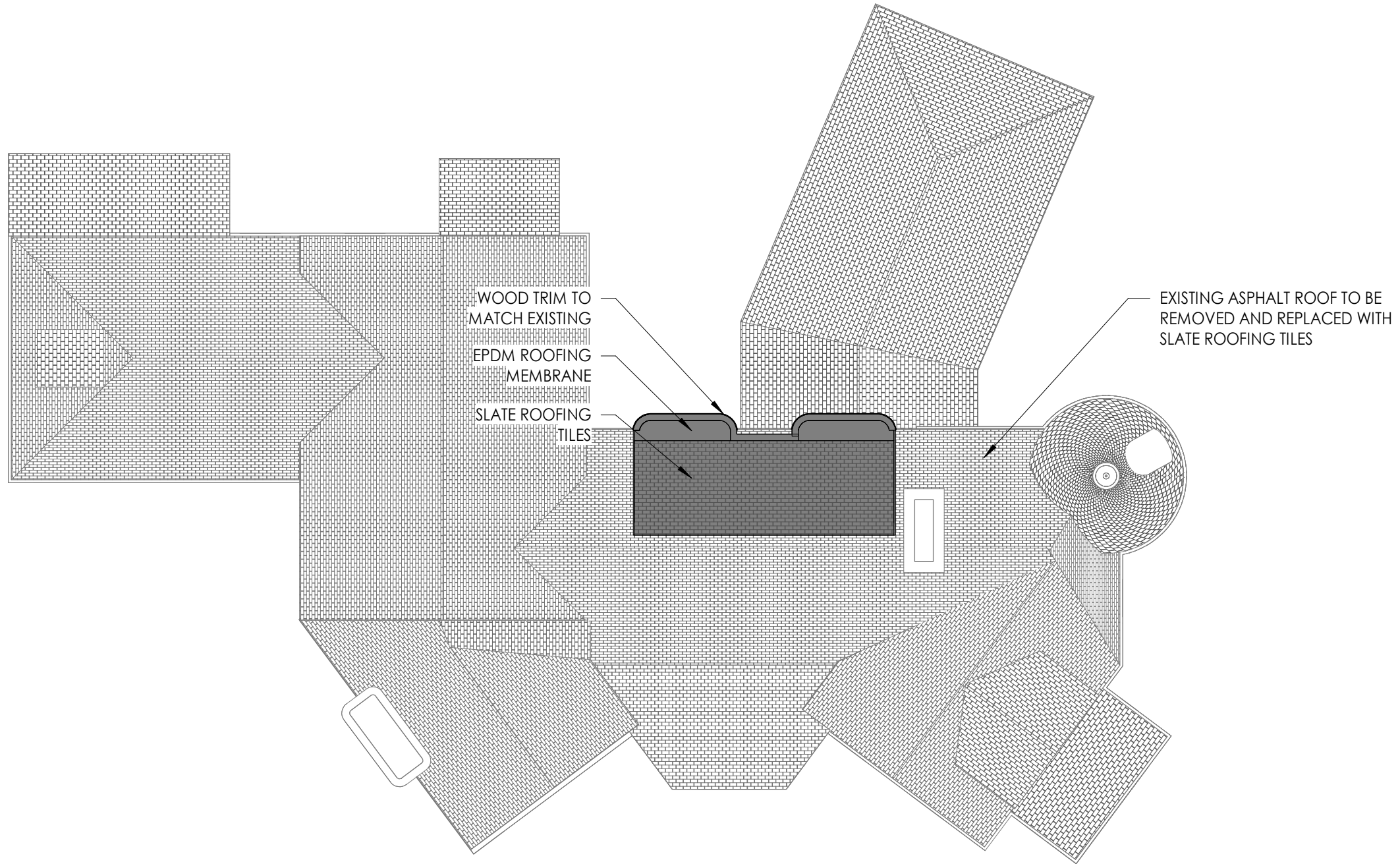
DATE: 2026.07.01
SCALE: 1/16" = 1'-0"

FLOOR PLAN

A-HIST-103

ORIGINAL SHEET - TABLOID (11"x17")
© DESIGNBLENDZ ARCHITECTURE, LLP 2021

REVISED



ROOF PLAN

HISTORICAL SUBMISSION

DESIGNBLENDZ ARCHITECTURE
4001 MAIN ST, SUITE 203
PHILADELPHIA, PA, 19127

215.995.0228
www.designblendz.com

ORI FEIBUSH
27 DRUIM MOIR LANE
PHILADELPHIA, PA 19118

REVISION:

DATE: 2026.07.01
SCALE: 3/32" = 1'-0"

ROOF PLAN

A-HIST-104



ORIGINAL SHEET - TABLOID (11"x17")
© DESIGNBLENDZ ARCHITECTURE, LLP 2021

REVISED



EXISTING WEST ELEVATION



HISTORICAL SUBMISSION

DESIGNBLENDZ ARCHITECTURE
4001 MAIN ST, SUITE 203
PHILADELPHIA, PA, 19127

215.995.0228
www.designblendz.com

ORI FEIBUSH
27 DRUIM MOIR LANE
PHILADELPHIA, PA 19118

REVISION:

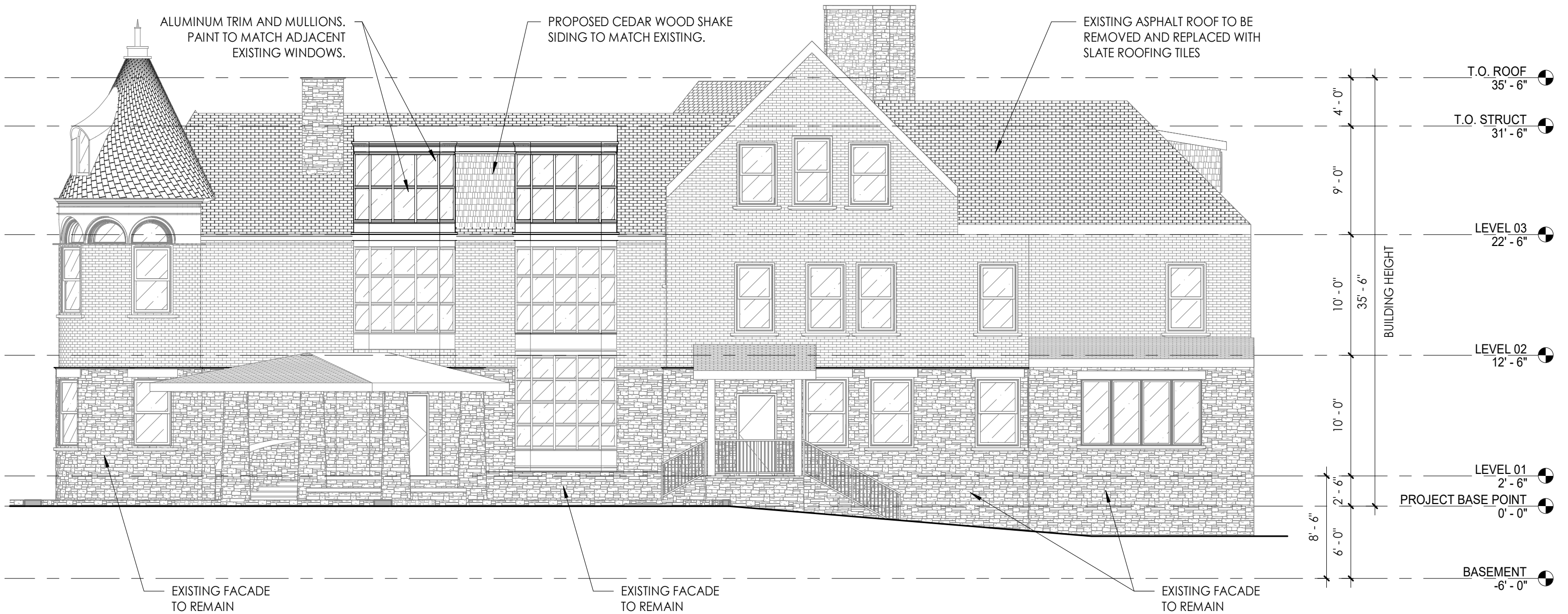
DATE: 2026.07.01
SCALE: 1/8" = 1'-0"

EXISTING ELEVATIONS

A-HIST-105

ORIGINAL SHEET - TABLOID (11"x17")
© DESIGNBLENDZ ARCHITECTURE, LLP 2021

REVISED



PROPOSED WEST ELEVATION



HISTORICAL SUBMISSION

DESIGNBLENDZ ARCHITECTURE
4001 MAIN ST, SUITE 203
PHILADELPHIA, PA, 19127

215.995.0228
www.designblendz.com

ORI FEIBUSH
27 DRUIM MOIR LANE
PHILADELPHIA, PA 19118

REVISION:

DATE: 2026.07.01
SCALE: 1/8" = 1'-0"

PROPOSED ELEVATIONS

A-HIST-106

ORIGINAL SHEET - TABLOID (11"x17")
© DESIGNBLENDZ ARCHITECTURE, LLP 2021

REVISED



EXISTING NORTH ELEVATION



HISTORICAL SUBMISSION

DESIGNBLENDZ ARCHITECTURE
4001 MAIN ST, SUITE 203
PHILADELPHIA, PA, 19127

215.995.0228
www.designblendz.com

ORI FEIBUSH
27 DRUIM MOIR LANE
PHILADELPHIA, PA 19118

REVISION:

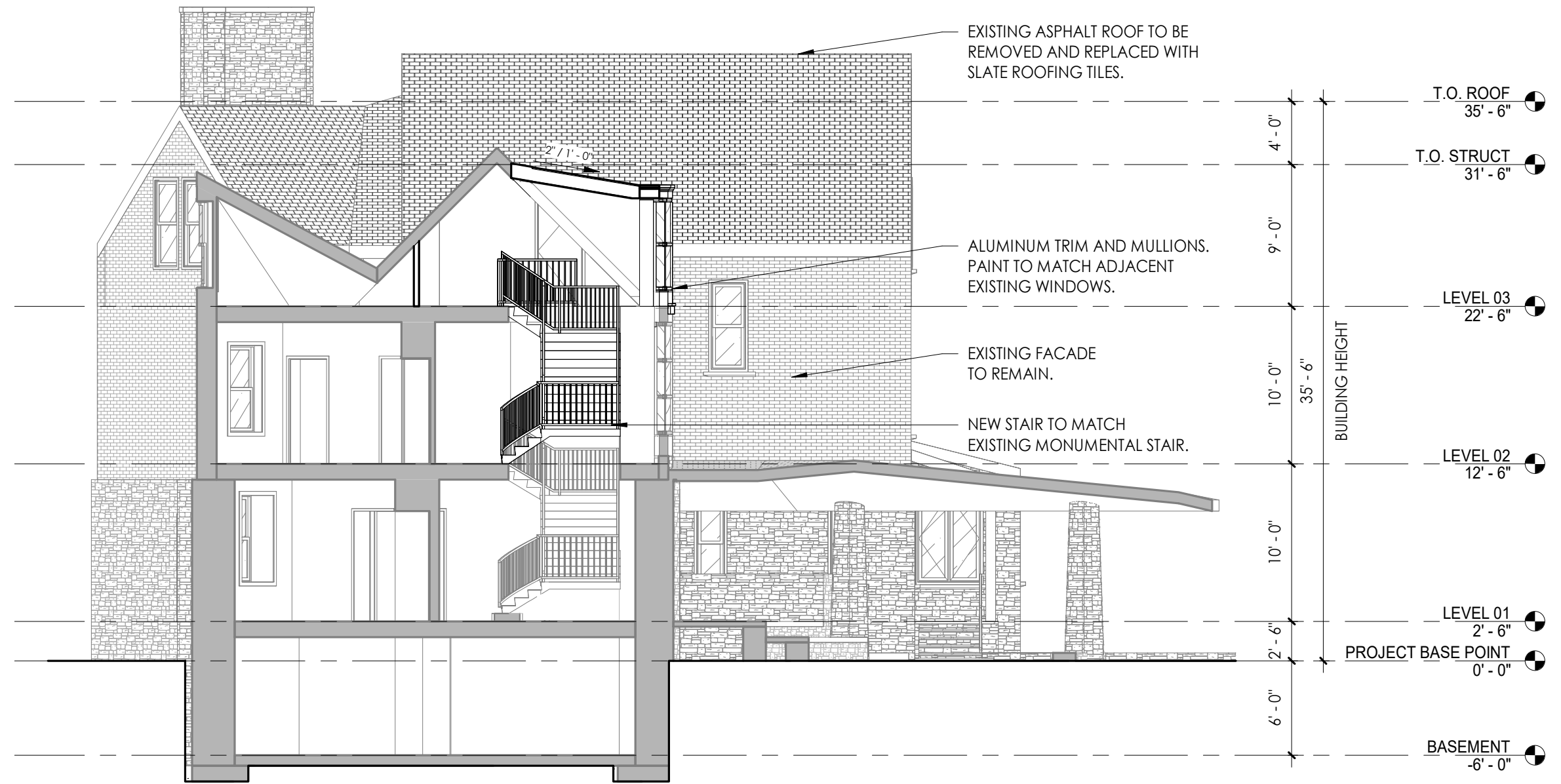
DATE: 2026.07.01
SCALE: 1/8" = 1'-0"

ORIGINAL SHEET - TABLOID (11"x17")
© DESIGNBLENDZ ARCHITECTURE, LLP 2021

EXISTING ELEVATIONS

A-HIST-107

REVISED



PROPOSED PARTIAL NORTH ELEVATION



HISTORICAL SUBMISSION

DESIGNBLENDZ ARCHITECTURE
4001 MAIN ST, SUITE 203
PHILADELPHIA, PA, 19127

215.995.0228
www.designblendz.com

ORI FEIBUSH
27 DRUIM MOIR LANE
PHILADELPHIA, PA 19118

REVISION:

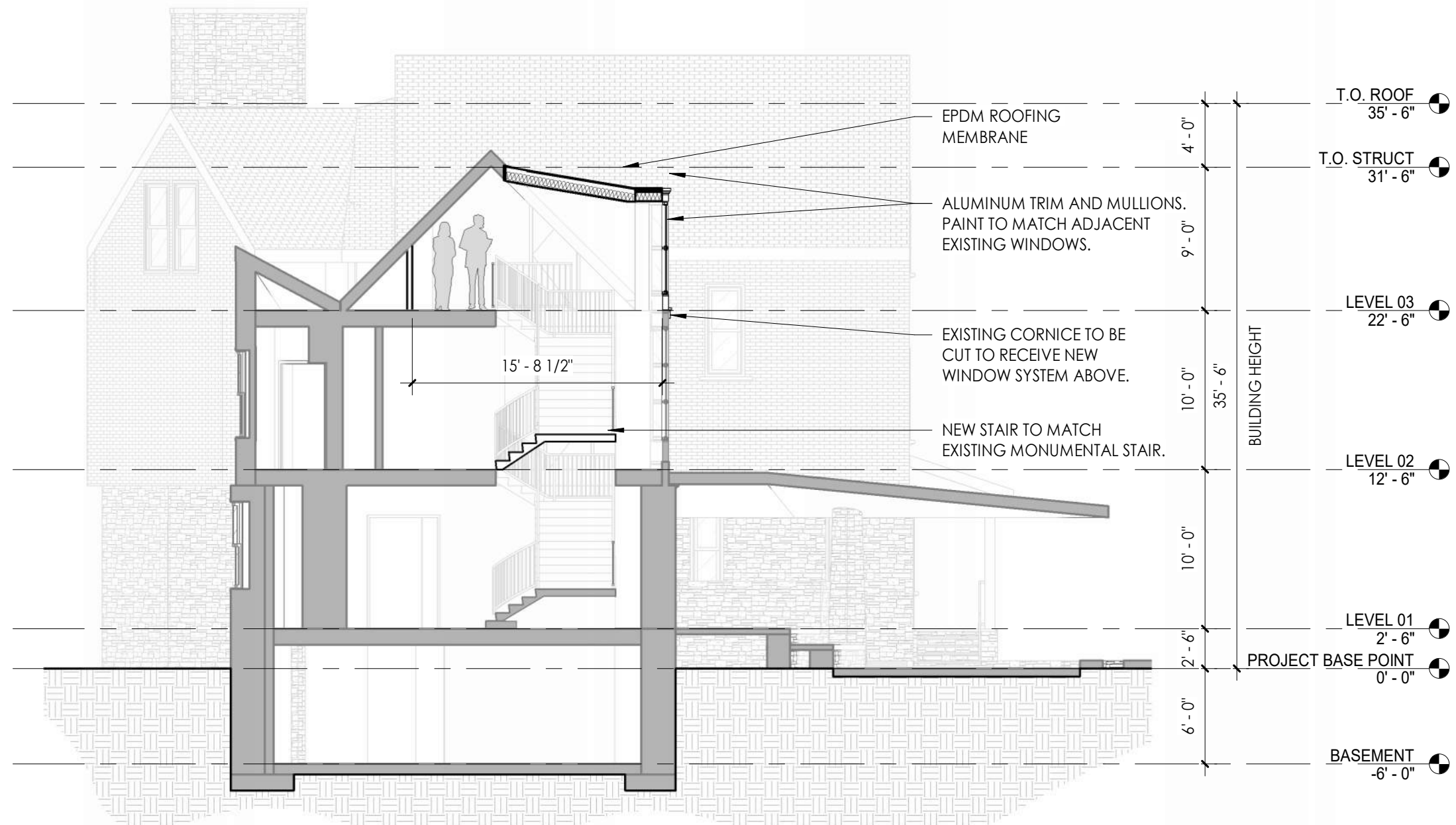
DATE: 2026.07.01
SCALE: 1/8" = 1'-0"

PROPOSED ELEVATIONS

A-HIST-108

ORIGINAL SHEET - TABLOID (11"x17")
© DESIGNBLENDZ ARCHITECTURE, LLP 2021

REVISED



EXISTING MONUMENTAL STAIR



BUILDING SECTION

HISTORICAL SUBMISSION

DESIGNBLENDZ ARCHITECTURE
4001 MAIN ST, SUITE 203
PHILADELPHIA, PA, 19127

215.995.0228
www.designblendz.com

ORI FEIBUSH
27 DRUIM MOIR LANE
PHILADELPHIA, PA 19118

REVISION:

DATE: 2026.07.01
SCALE: 1/8" = 1'-0"

BUILDING SECTION

A-HIST-109



ORIGINAL SHEET - TABLOID (11"x17")
© DESIGNBLENDZ ARCHITECTURE, LLP 2021

REVISED



FRONT PERSPECTIVE

HISTORICAL SUBMISSION



DESIGNBLENDZ ARCHITECTURE
4001 MAIN ST, SUITE 203
PHILADELPHIA, PA, 19127

215.995.0228
www.designblendz.com

ORI FEIBUSH
27 DRUIM MOIR LANE
PHILADELPHIA, PA 19118

REVISION:

DATE: 2026.07.01

SCALE:

FRONT PERSPECTIVE

A-HIST-111

ORIGINAL SHEET - TABLOID (11"x17")
© DESIGNBLENDZ ARCHITECTURE, LLP 2021

REVISED



ENTRY PERSPECTIVE 2

HISTORICAL SUBMISSION



DESIGNBLENDZ ARCHITECTURE
4001 MAIN ST, SUITE 203
PHILADELPHIA, PA, 19127

215.995.0228
www.designblendz.com

ORI FEIBUSH
27 DRUIM MOIR LANE
PHILADELPHIA, PA 19118

REVISION:

DATE: 2026.07.01

SCALE:

FRONT PERSPECTIVE

A-HIST-112

ORIGINAL SHEET - TABLOID (11"x17")
© DESIGNBLENDZ ARCHITECTURE, LLP 2021

REVISED



AERIAL PERSPECTIVE

HISTORICAL SUBMISSION



DESIGNBLENDZ ARCHITECTURE
4001 MAIN ST, SUITE 203
PHILADELPHIA, PA, 19127

215.995.0228
www.designblendz.com

ORI FEIBUSH
27 DRUIM MOIR LANE
PHILADELPHIA, PA 19118

REVISION:

DATE: 2026.07.01

SCALE:

AERIAL PERSPECTIVE

A-HIST-113

ORIGINAL SHEET - TABLOID (11"x17")
© DESIGNBLENDZ ARCHITECTURE, LLP 2021