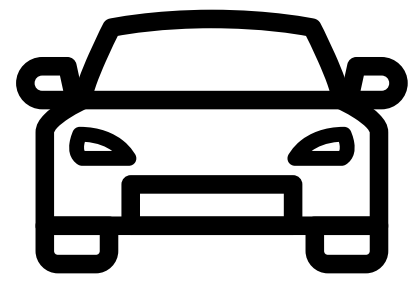
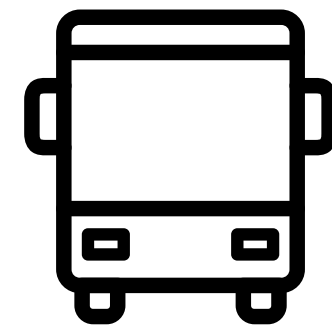


A Critical Multimodal Connection

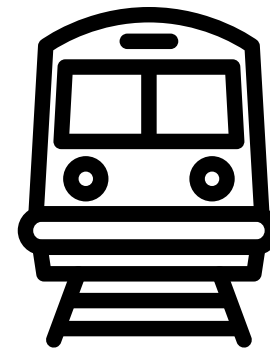
In addition to being an important recreation center, the area surrounding the 48th & Woodland Playground serves as an important connection between Southwest and South Philadelphia and Center City for many different modes



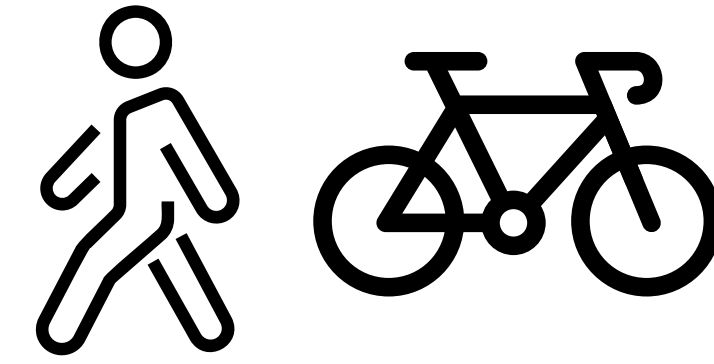
Over 25,000 cars cross the Grays Ferry Bridge every day



SEPTA buses 12, 64, 52, and 411 stop in the study area



SEPTA trolleys T4 and T5 (Routes 13 and 36) stop in the study area



Pedestrian and bicycle connections to the Grays Ferry bridge, Bartram's Garden, and the Schuylkill River Trail

Timeline

47th & 48th Complete Streets Project

- **Fall 2022** - Neighbors reach out to CM Gauthier's office about a 48th Street & Greenway Concept
- **Summer 2023** - CM Gauthier and City meet with community to discuss traffic safety issues
- **Fall 2023 & Winter 2024** - Open House meetings to gather feedback on 48th Street concept
 - **Community feedback from these meetings encouraged the City to take a closer look at the area south of Kingsessing, and the City applied for funding to do a comprehensive traffic safety study**
- **Fall 2024** - 48th Street repaving, striping, and speed cushions installed
- **Winter-Spring 2025** - 47th Street design between the City and CM Gauthier's office with additional resident, stakeholder, and business outreach
- **Summer 2025** - 47th Street repaved and restriped with new layout and curbside regulations
- **Fall 2025** - The 48th & Woodland Playground Traffic Safety Study (the study we're talking about tonight!) kicked off



Cars parked blocking the sidewalk - Grays Ferry & Woodland



A car uses the bike lane and parking lane as a right turn lane - Grays Ferry & Paschall

Traffic Safety Issues & Crashes

Multiple streets within the study area are on the City's High Injury Network - 12% of streets where 80% of traffic deaths and serious injuries occur

62

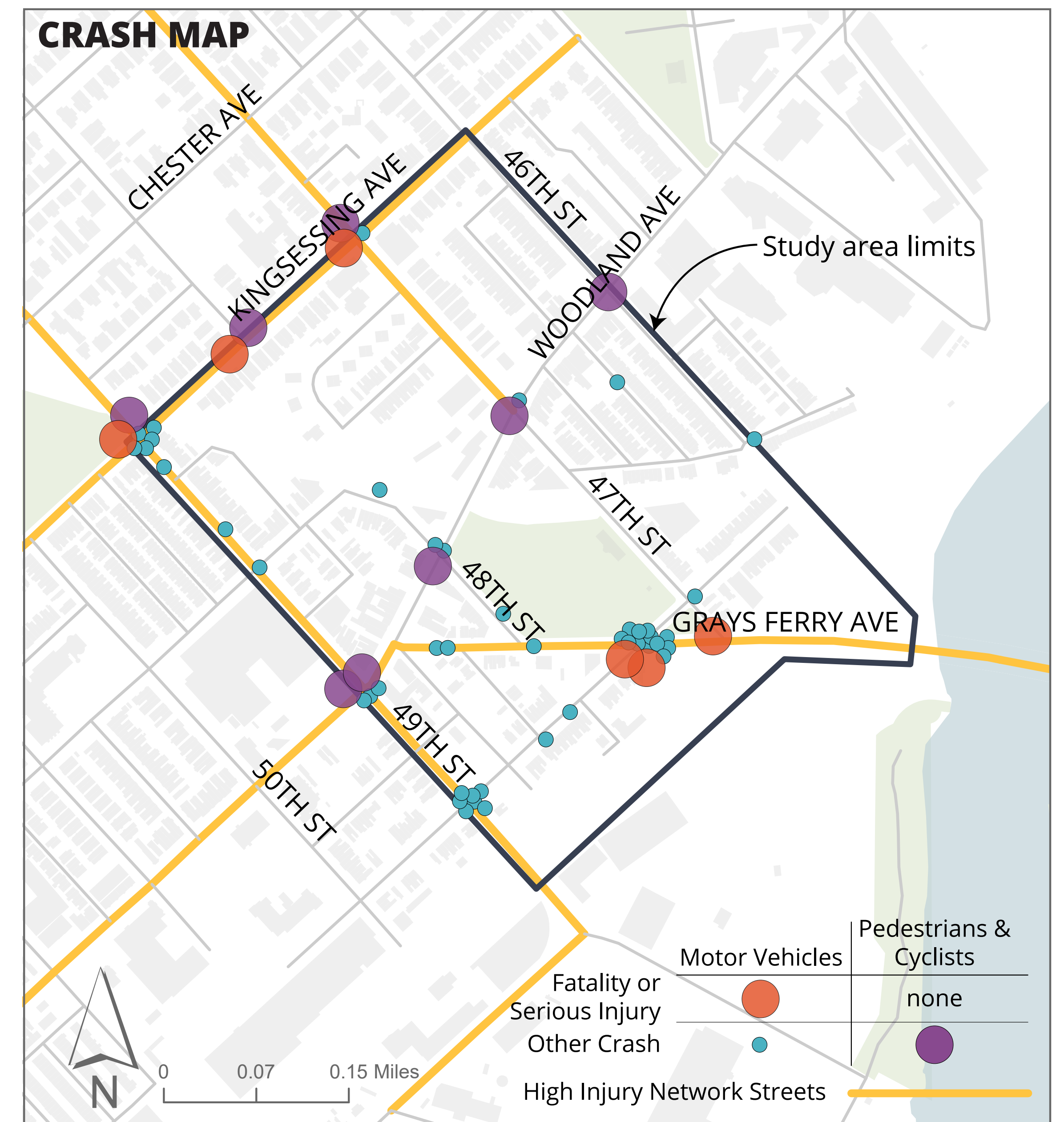
2020-2024 crashes within the study area

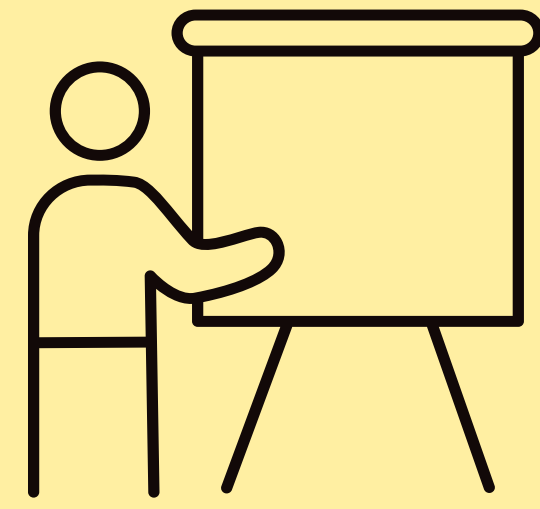
6

2020-2024 fatal or serious injury crashes

9

2020-2024 pedestrians and cyclists involved in a crash





1,500+
Transit Rider,
Business,
and Resident
Canvassing

8
Stakeholder Meetings &
Pop-Ups



30
Safety
Audit
Attendees

267
people provided
feedback via online
survey

all feedback as of 02/23/2026

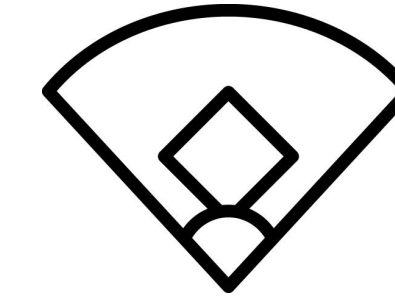
What is your relationship to the study area?



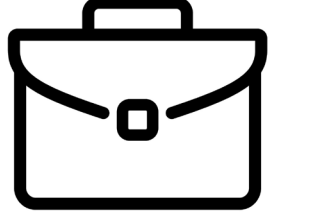
I travel through the neighborhood (56%)



I live here (53%)



I play here (42%)



I work here or I own a business here (6%)

Many participants live, play, and travel through the neighborhood.

How do you travel in the study area?

Walk (69%)

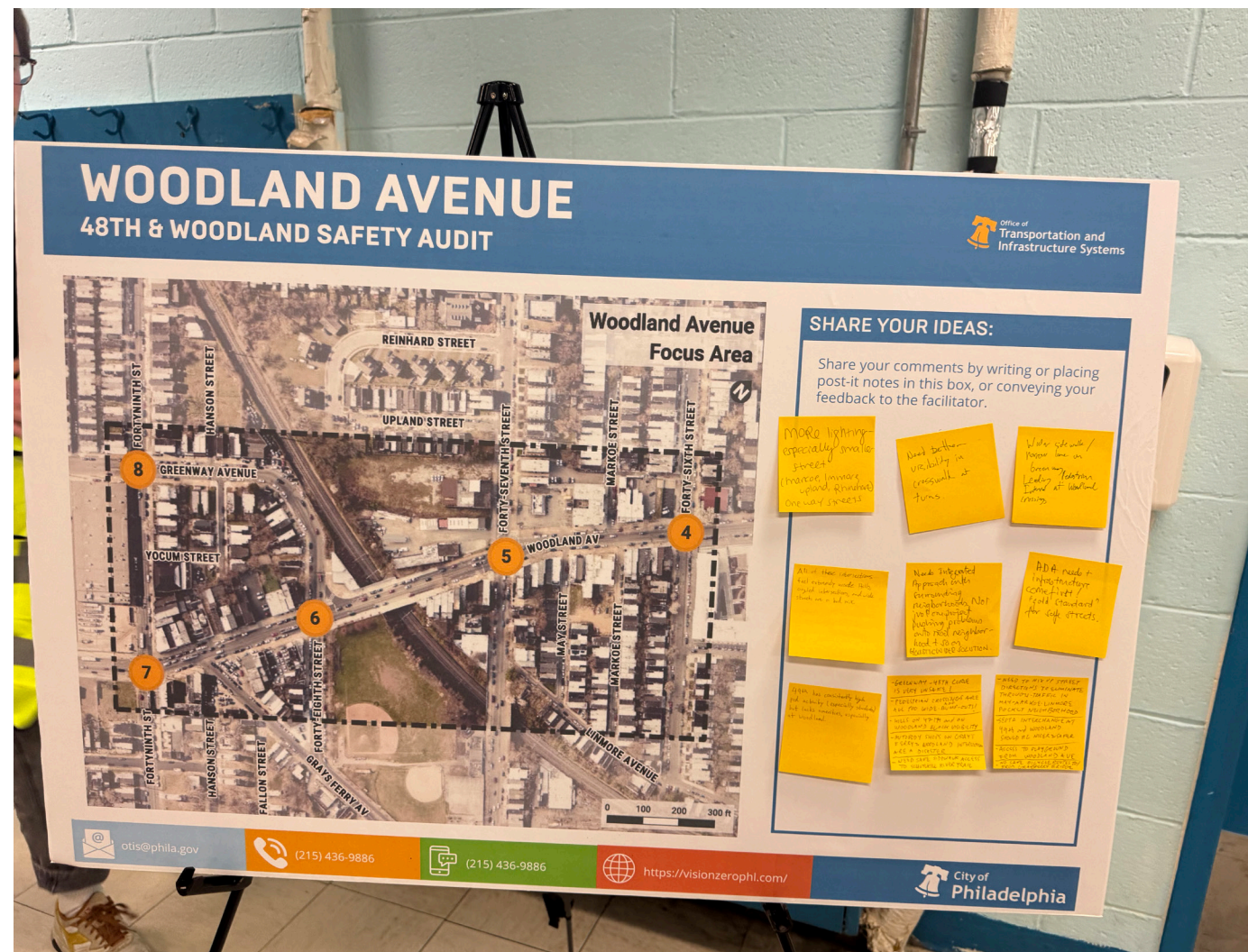
Drive (70%)

Bike (57%)

Trolley (26%)

Bus (33%)

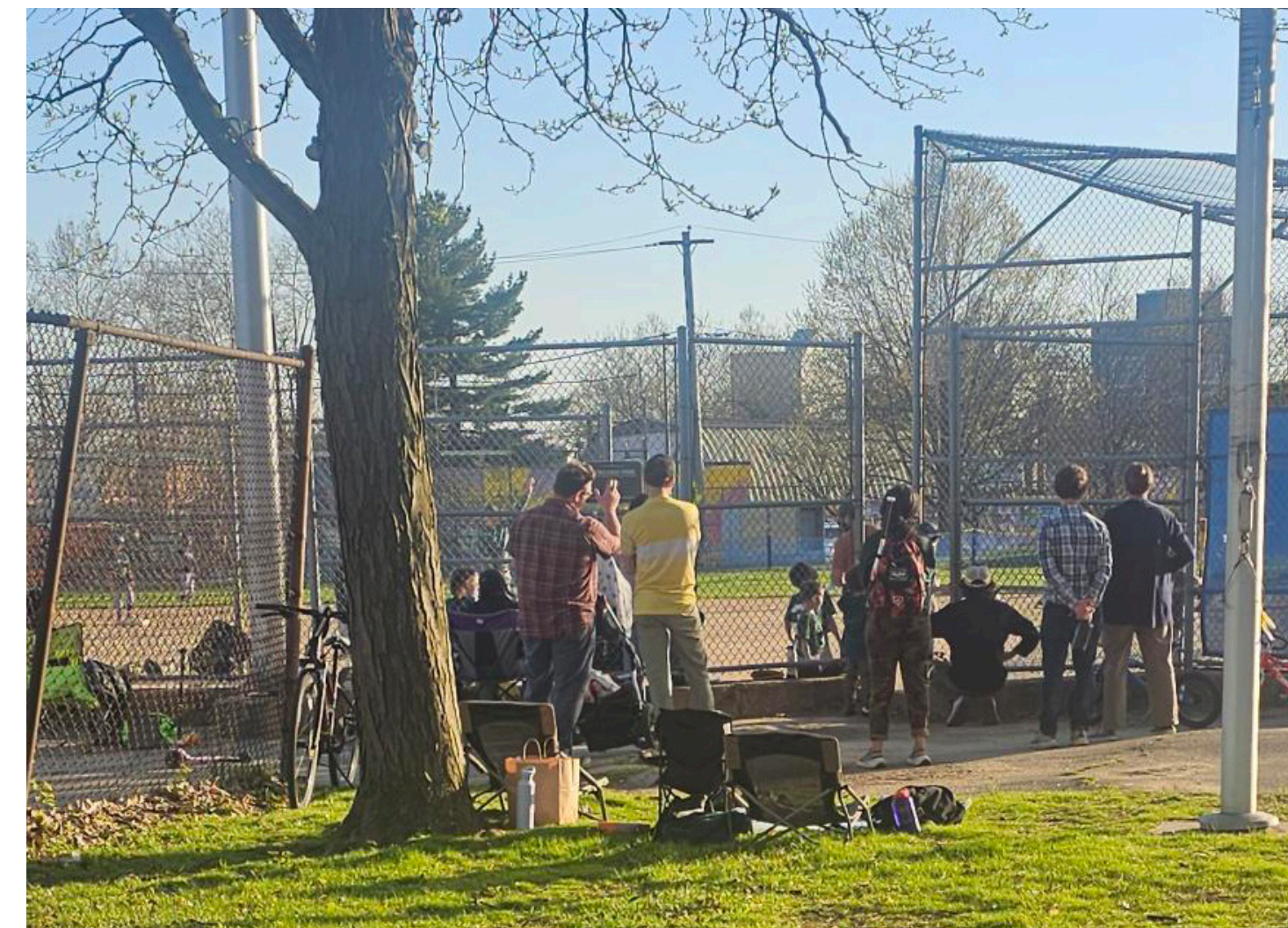
Travel within the study area is multimodal, with walking, driving, and biking as the most common modes, alongside bus and trolley.



Safety Audit Recap Summary



Safety Audit Observations



PAYSA Opening Day



Bartram's Garden Spring Fest (with SEPTA)

"This intersection is very scary to cross as a pedestrian, cars just honk and turn onto the bridge even when I'm in the middle of the crosswalk."



SIGNAL TIMING AND PHASING



- Change signal timing to reduce conflicts
- Restrict turns on red that conflict with pedestrian crossings
- Give pedestrians a head start at crossings

"Improved striping and physical barriers would help improve intersection safety for Paschall between 47th and Grays Ferry."

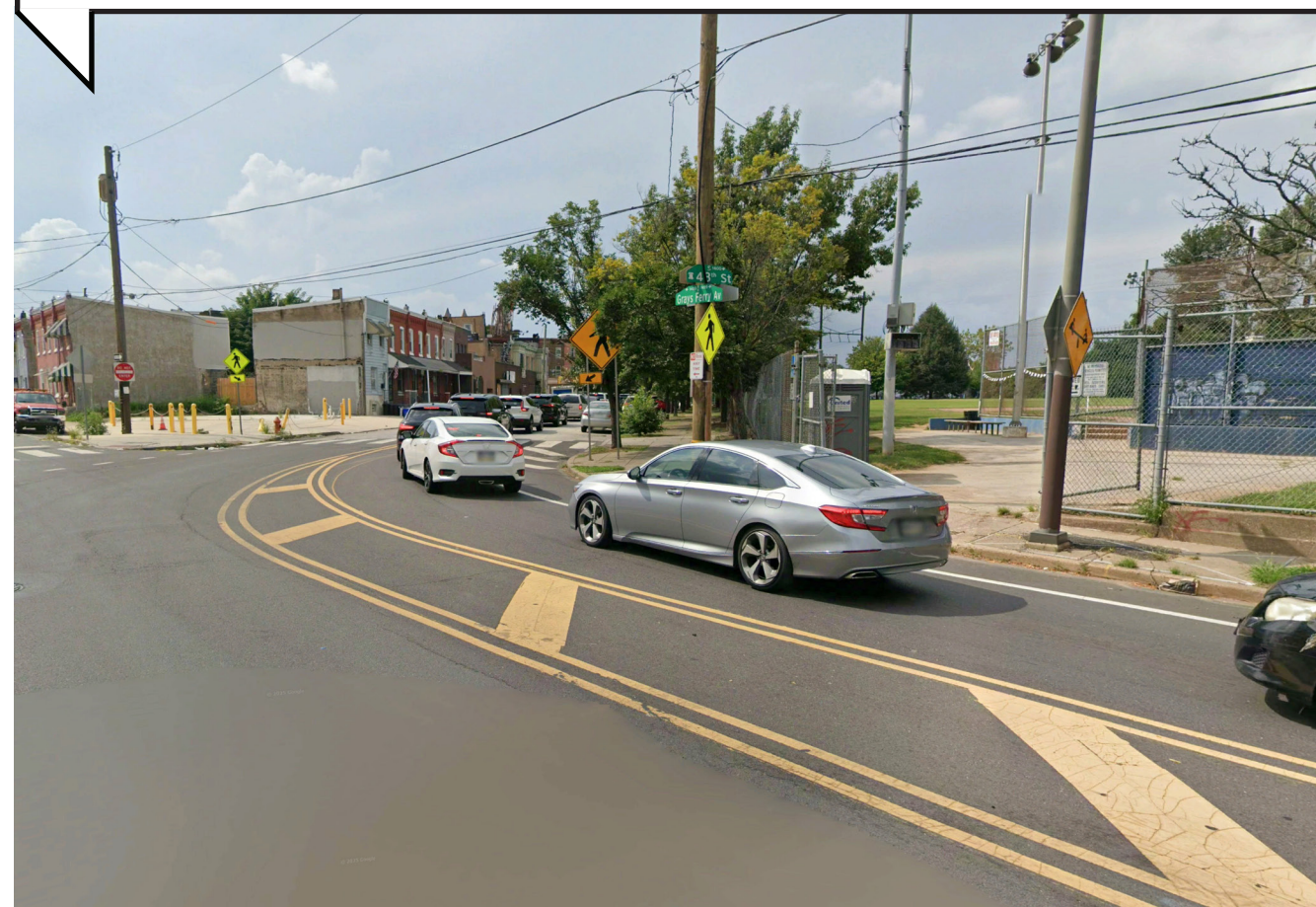


PAVEMENT MARKINGS

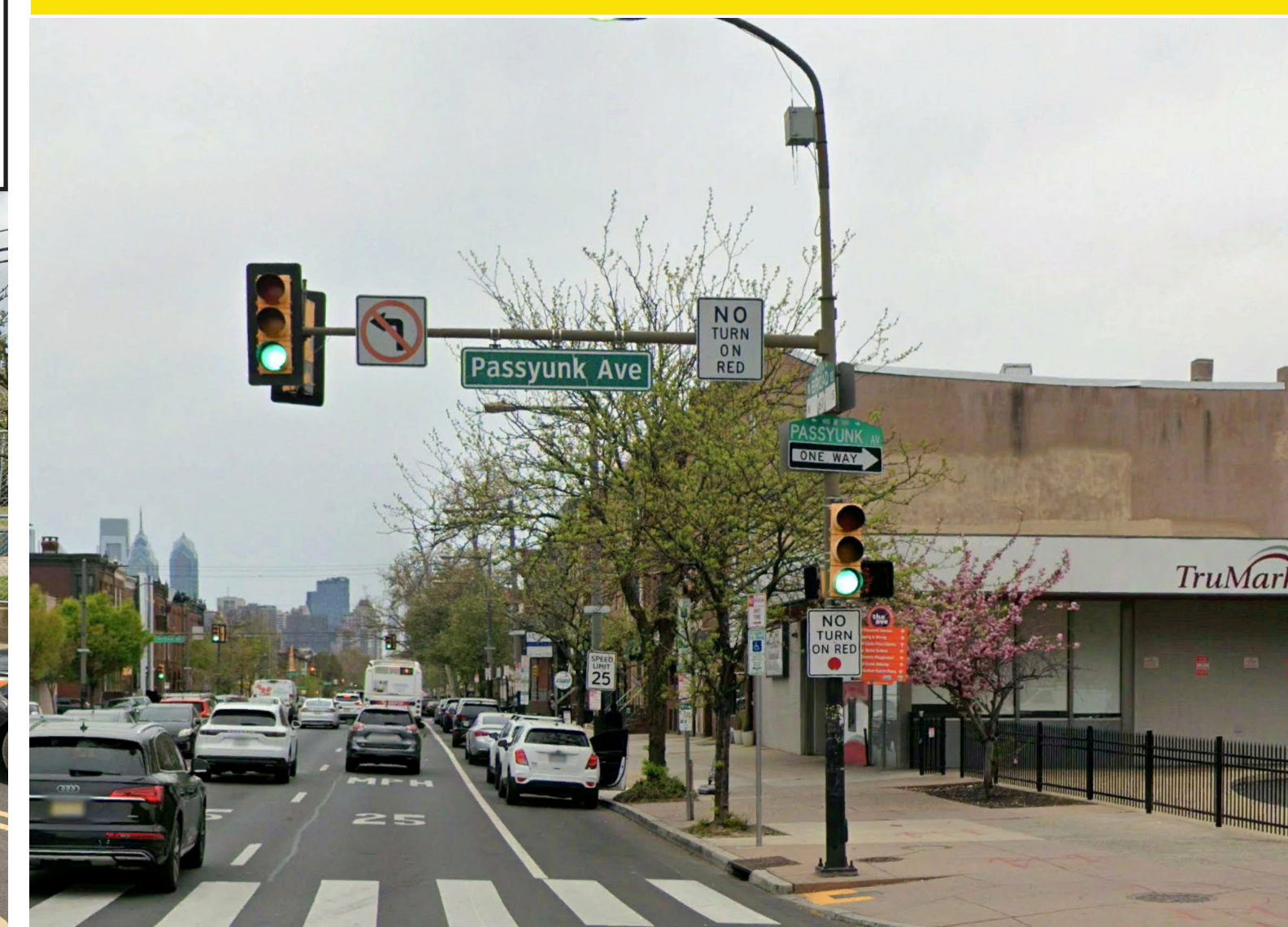


- Repaint crosswalks and lane lines
- Make markings easier to see
- Add clear street symbols, like speed limits

"No visibility or signage for drivers coming around the corner from Grey's Ferry."



SIGNAGE



- Add or update traffic signs
- Make rules clearer for drivers
- Post signs like no parking or speed limits

"Illegally parked cars in the crosswalk, or on the sidewalk block people from safely crossing."



PAINT AND FLEXIBLE POSTS



- Use markings and posts to guide traffic
- Keep corners clear for better visibility (daylighting)
- Use posts to prevent unsafe turns

"When people park right up next to the intersection, you can't see traffic."



- Extend curbs to improve visibility
- Shorten crossing distance for pedestrians
- Slow turning vehicles at corners

CURB EXTENSIONS



"It is not safe for pedestrians to cross here. The cars flying around the turn from Gray's Ferry to 48th St have no visibility for that crosswalk"



- Raised features to slow vehicles and improves yielding
- Improve yielding at crosswalks

RAISED INTERSECTION



"People speed here after they get off the highway"



- Raised features to slow vehicles and improves yielding
- Improve yielding at crosswalks

RAISED CROSSWALK



"Cars drive too fast around this curve and make crossing there on foot difficult."



- Pedestrian-activated flashing lights
- Increase driver awareness and yielding

RRFB (FLASHING BEACONS)

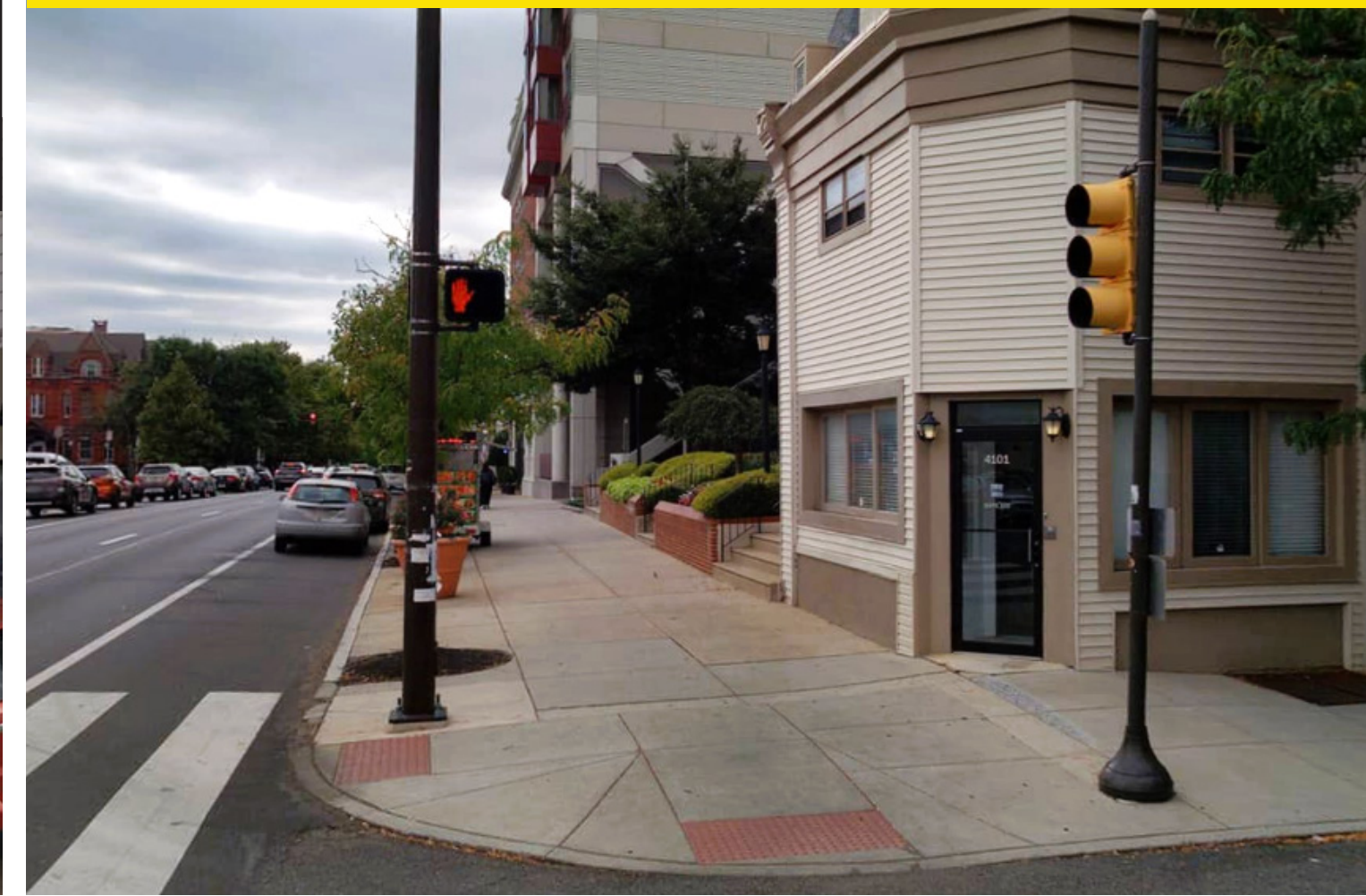


"The sidewalks jus"



- Build or repair sidewalks to provide safe, accessible walking space
- Encourage walking by providing safe, accessible, and well-maintained spaces

SIDEWALK IMPROVEMENTS



"Cars often blow through this stop sign at Paschall"



- Small, circular intersection design to slow vehicles
- Guides traffic around a central island
- Improve safety at intersections

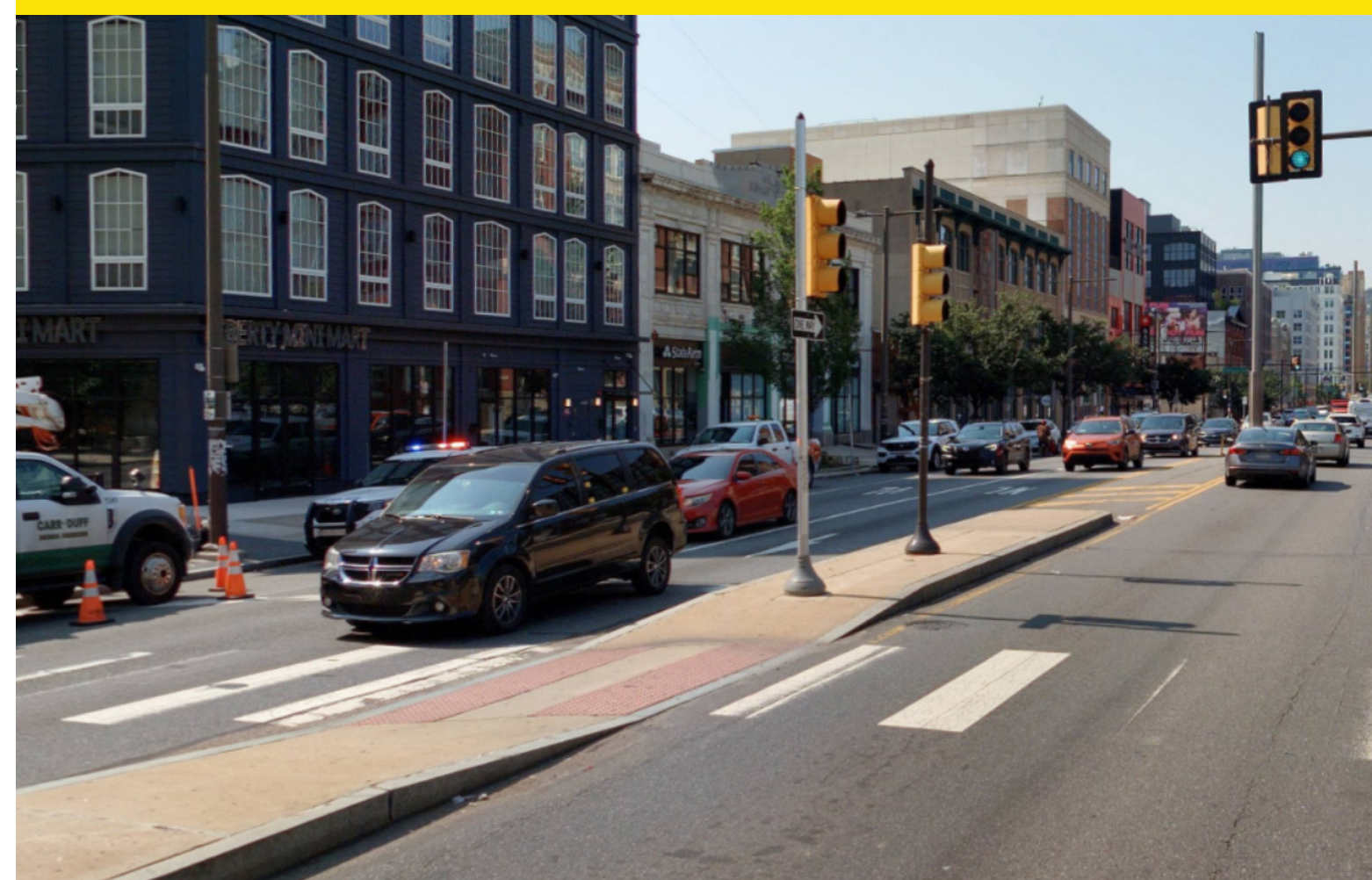
NEIGHBORHOOD TRAFFIC CIRCLE



"Cars disobey the light, creating a hazardous condition for pedestrians trying to cross on the south side of the intersection."





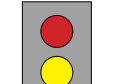

CONCRETE MEDIAN



- Median separates opposing travel lanes
- Slow left-turning motor vehicles
- Guide motor vehicles to a wider turning angle

NEAR-TERM IMPROVEMENTS

Low-cost, quick-to-implement strategies that provide immediate benefits while supporting long-term goals.

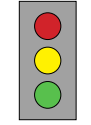






-  Signage
-  Pavement markings
-  Traffic signal timing and phasing
-  Paint and flexible posts

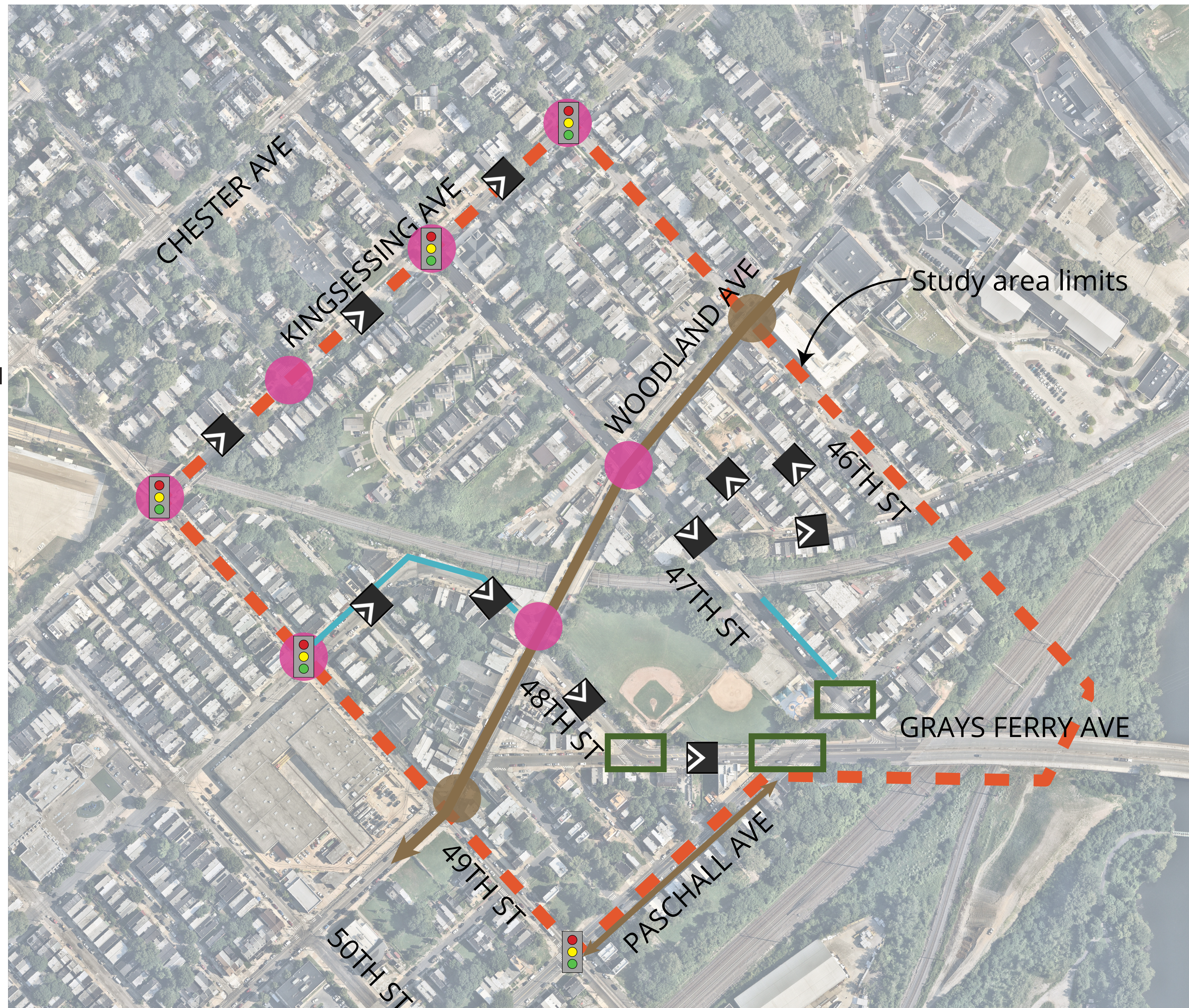


FEEDBACK:

LONG-TERM IMPROVEMENTS

Larger-scale strategies that take more time and funding to implement.

-  Traffic signal upgrades
-  New speed cushions (vertical deflection)
-  Curb extensions
-  Sidewalk improvements
-  Intersection improvements (see in detail at other tables)
-  Planned work for Trolley Modernization (SEPTA)
-  Planned trolley station

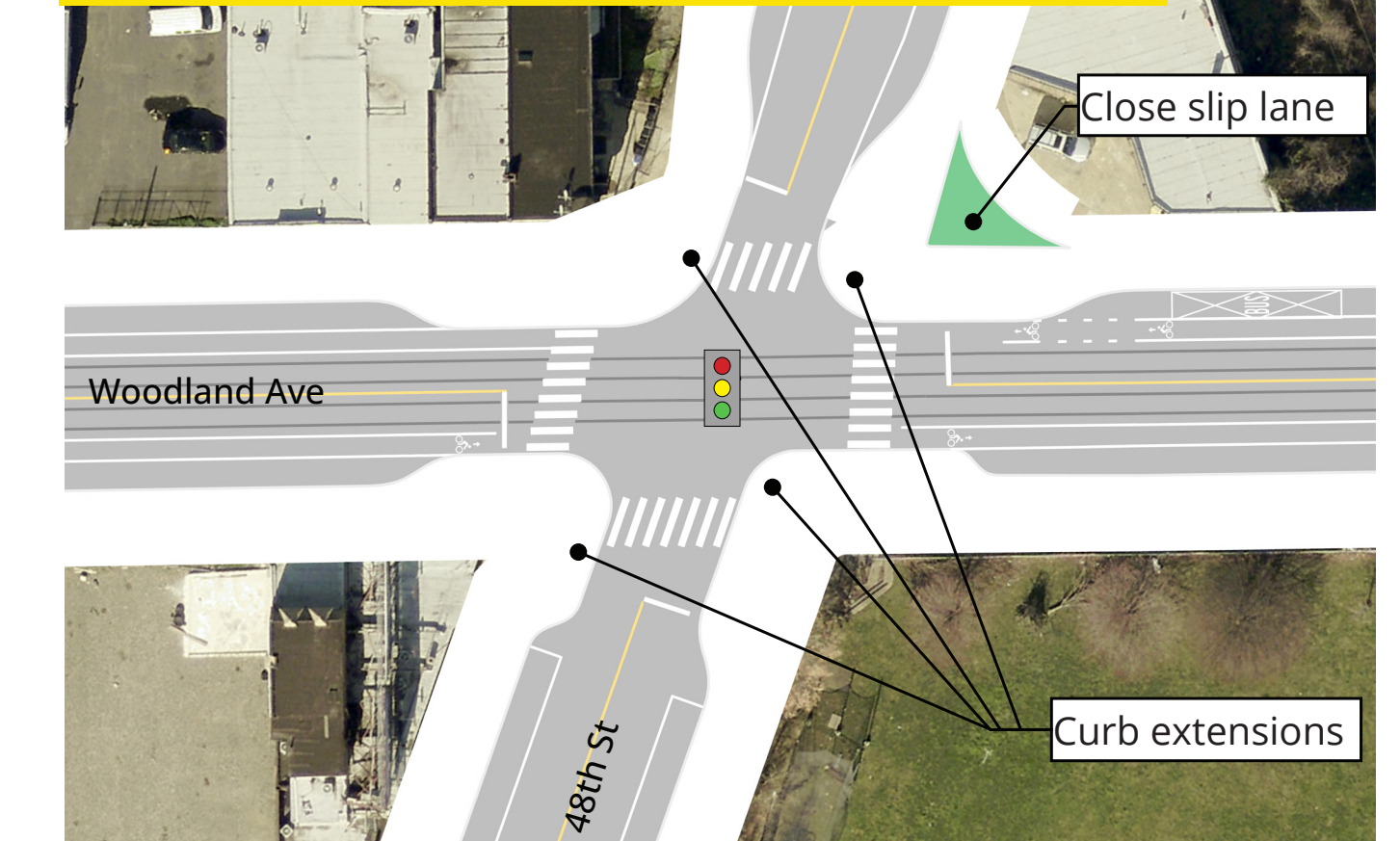


FEEDBACK:

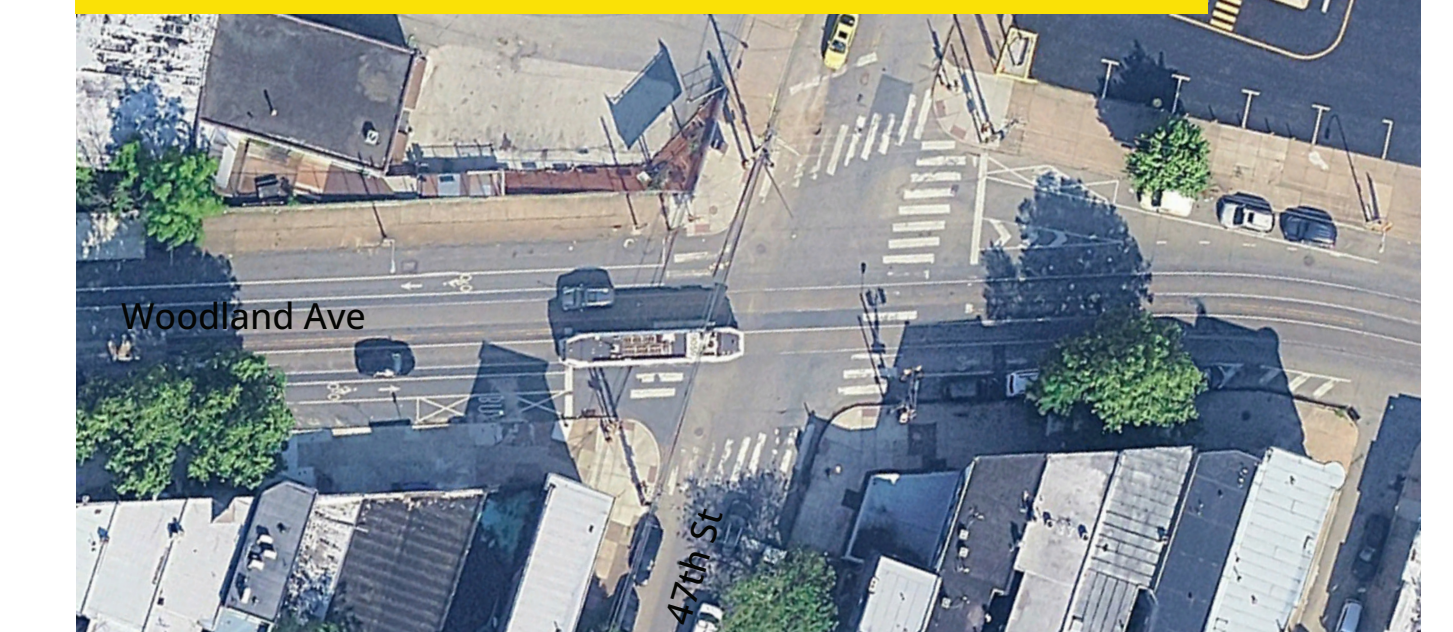
48th St and Woodland Ave - Existing



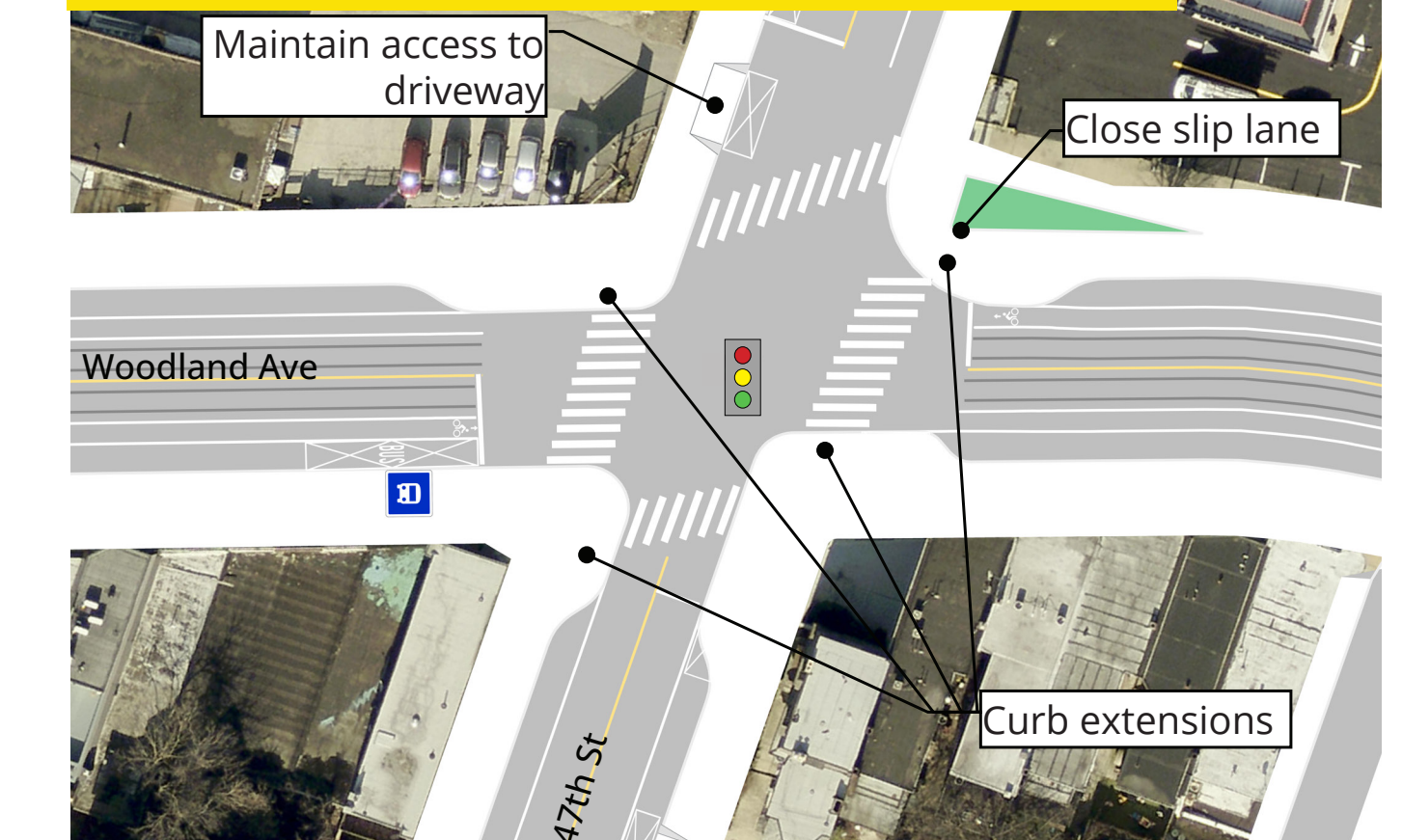
48th St and Woodland Ave - Concept



47th St and Woodland Ave - Existing



47th St and Woodland Ave - Concept



EXISTING



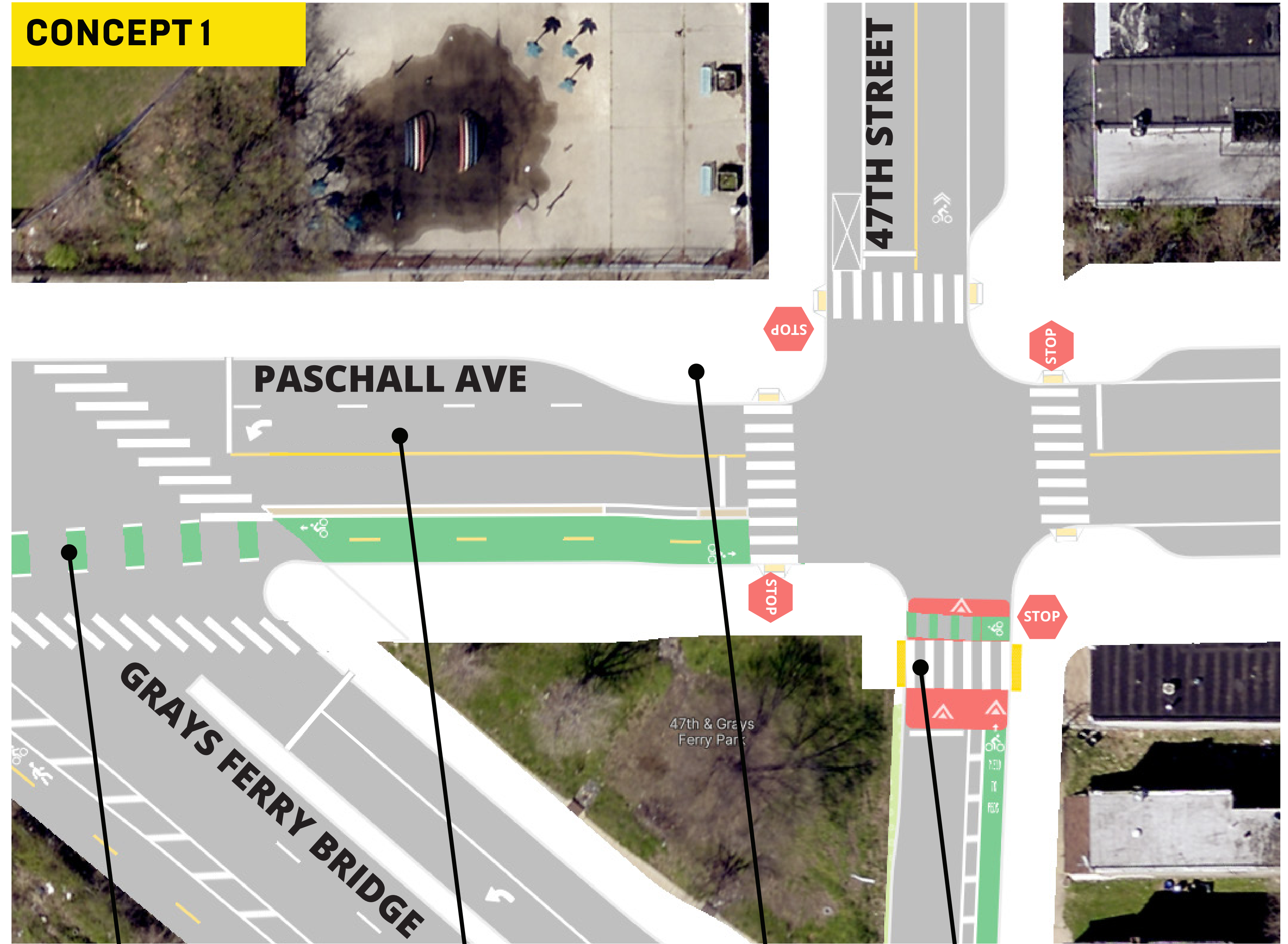
48TH & WOODLAND
PLAYGROUND

47TH STREET

PASCHALL AVE

GRAYS FERRY BRIDGE

CONCEPT 1



TWO-WAY
SEPARATED BIKE
FACILITY (*alignment
established as part
of SEPTA's Blossom at
Bartram Plan*)

DEDICATED
LEFT TURN
LANE

CURB BUMPOUT

RAISED CROSSWALK

EXISTING



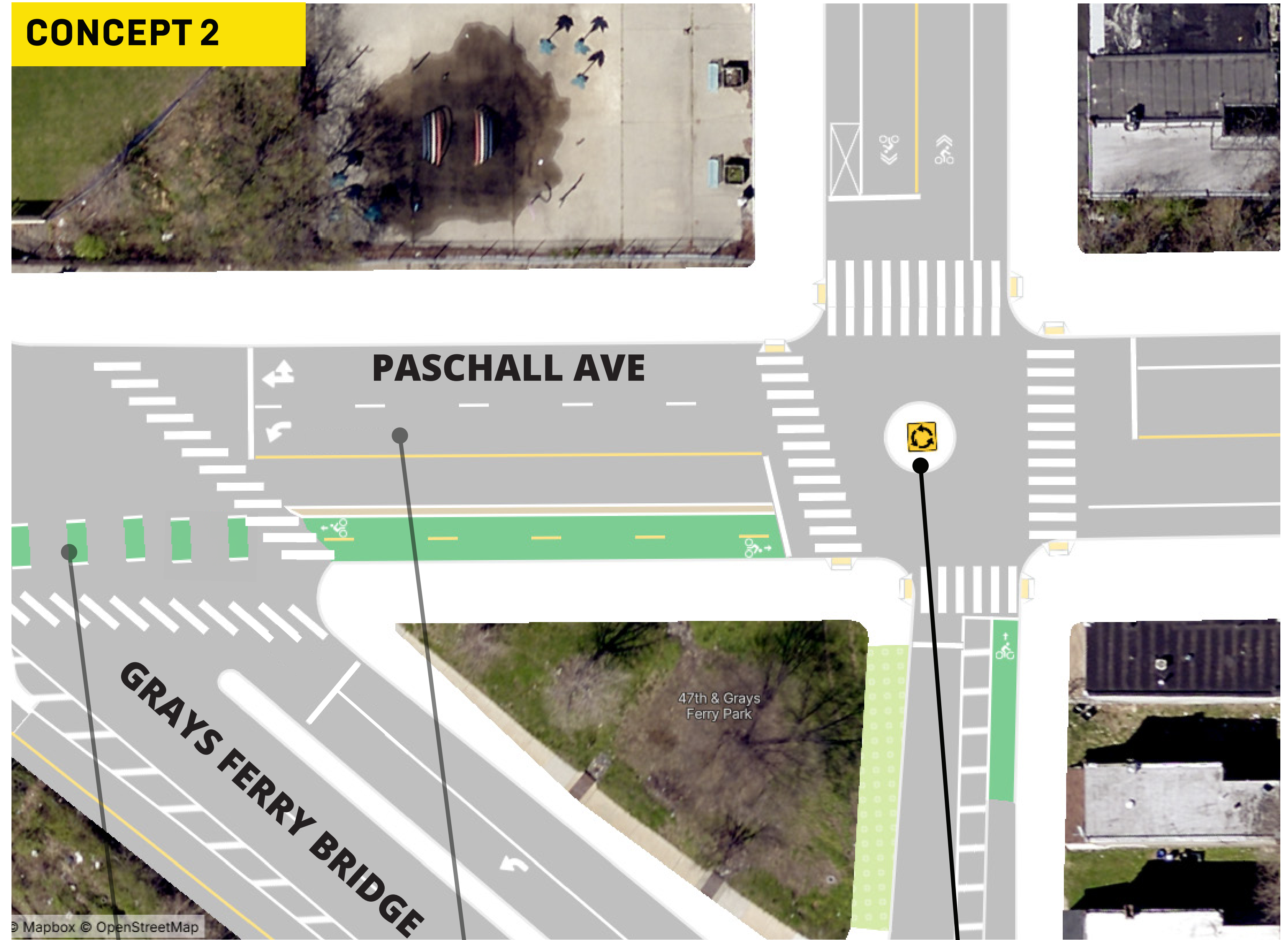
48TH & WOODLAND
PLAYGROUND

47TH STREET

PASCHALL AVE

GRAYS FERRY BRIDGE

CONCEPT 2



PASCHALL AVE

GRAYS FERRY BRIDGE

47th & Grays
Ferry Park

TWO-WAY
SEPARATED BIKE
FACILITY (*alignment
established as part
of SEPTA's Blossom at
Bartram Plan*)

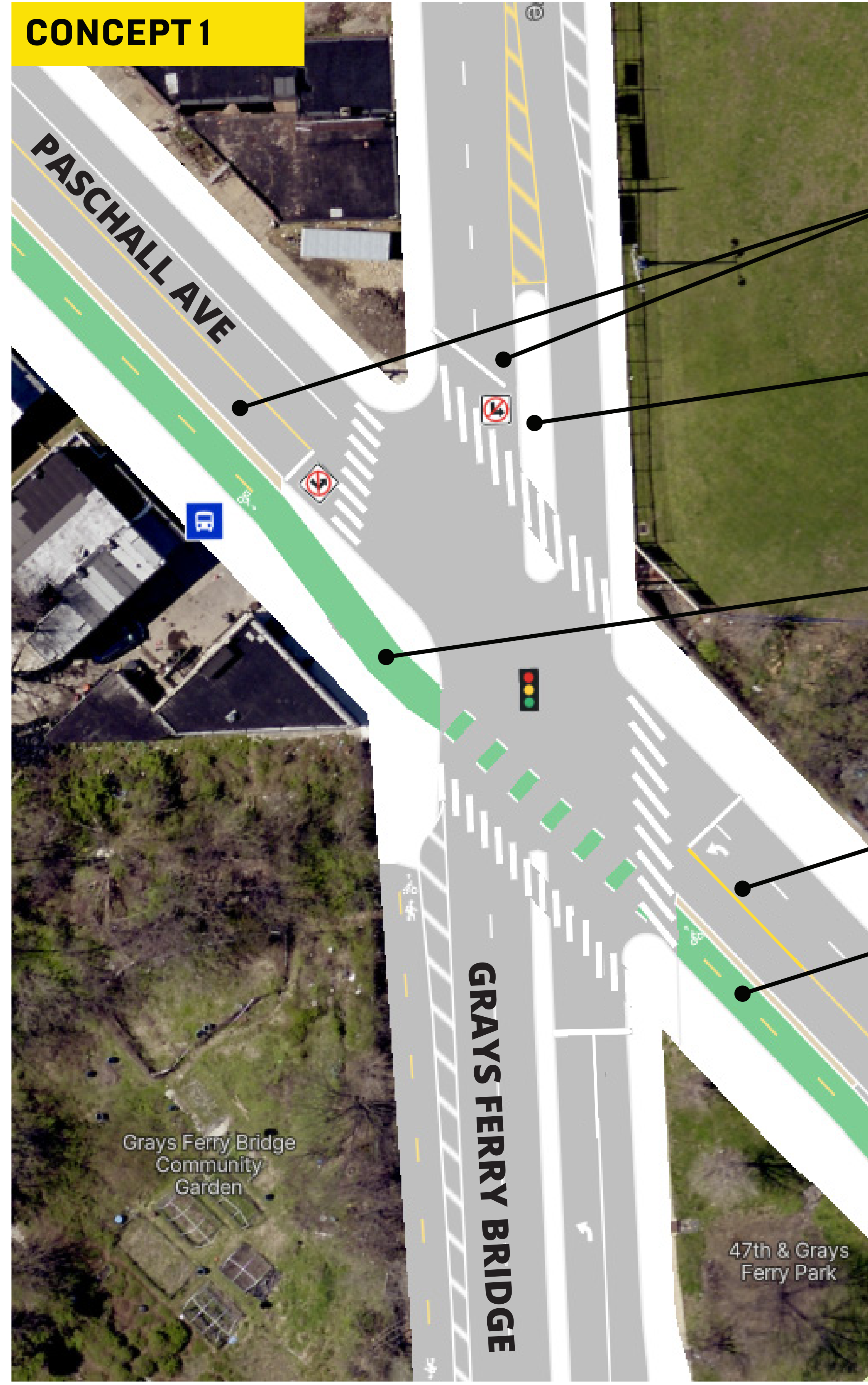
DEDICATED LEFT
TURN LANE

NEIGHBORHOOD
TRAFFIC CIRCLE

EXISTING



CONCEPT 1



PROHIBIT LEFT TURNS

CONCRETE ISLAND
Prevents left turns onto Paschall and narrows lanes to slow vehicles down

CURB BUMPOUT WITH BIKE LANE

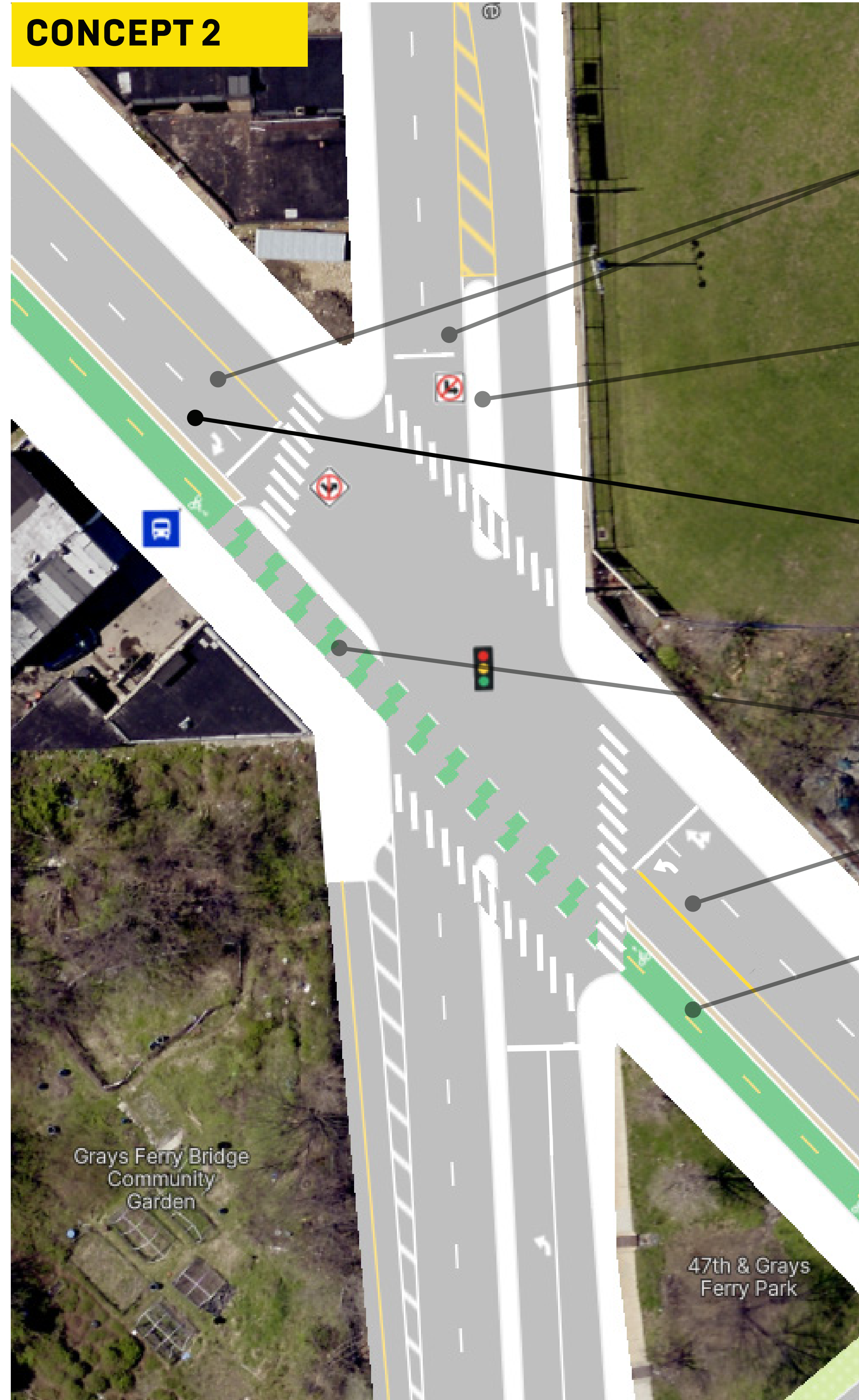
DEDICATED LEFT TURN LANE

TWO-WAY SEPARATED BIKE FACILITY *(alignment established as part of SEPTA's Blossom at Bartram Plan)*

EXISTING



CONCEPT 2



PROHIBIT LEFT TURNS

CONCRETE ISLAND
Prevents left turns onto Paschall and narrows lanes to slow vehicles down

DEDICATED RIGHT TURN LANE
With phase separation to remove conflicts with bikes and pedestrians

CURB BUMPOUT WITH BIKE LANE

DEDICATED LEFT TURN LANE

TWO-WAY SEPARATED BIKE FACILITY *(alignment established as part of SEPTA's Blossom at Bartram Plan)*

Grays Ferry Bridge Community Garden

47th & Grays Ferry Park

EXISTING

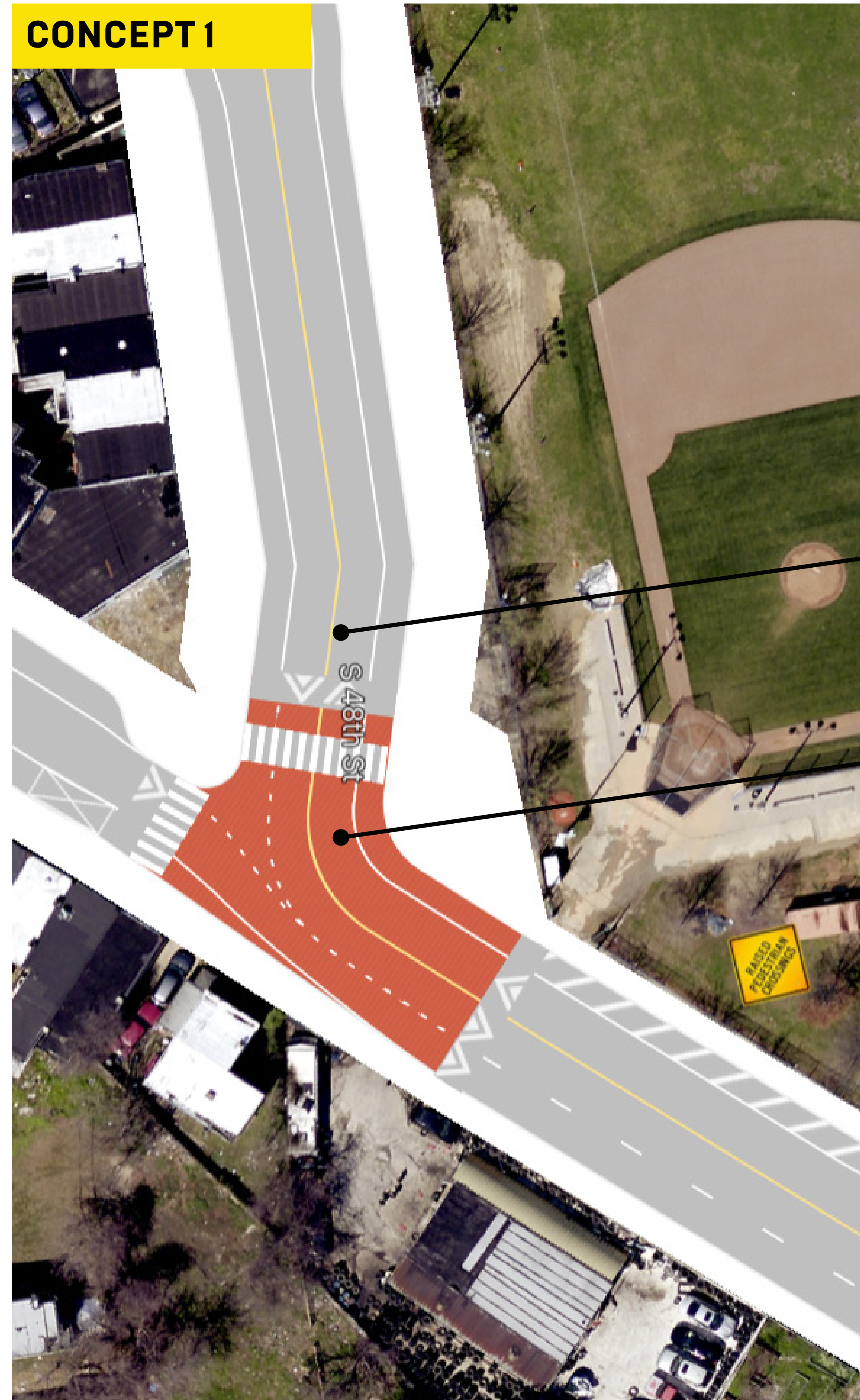


48TH STREET

48TH & WOODLAND
PLAYGROUND

GRAYS FERRY AVENUE

CONCEPT 1



S 48th St

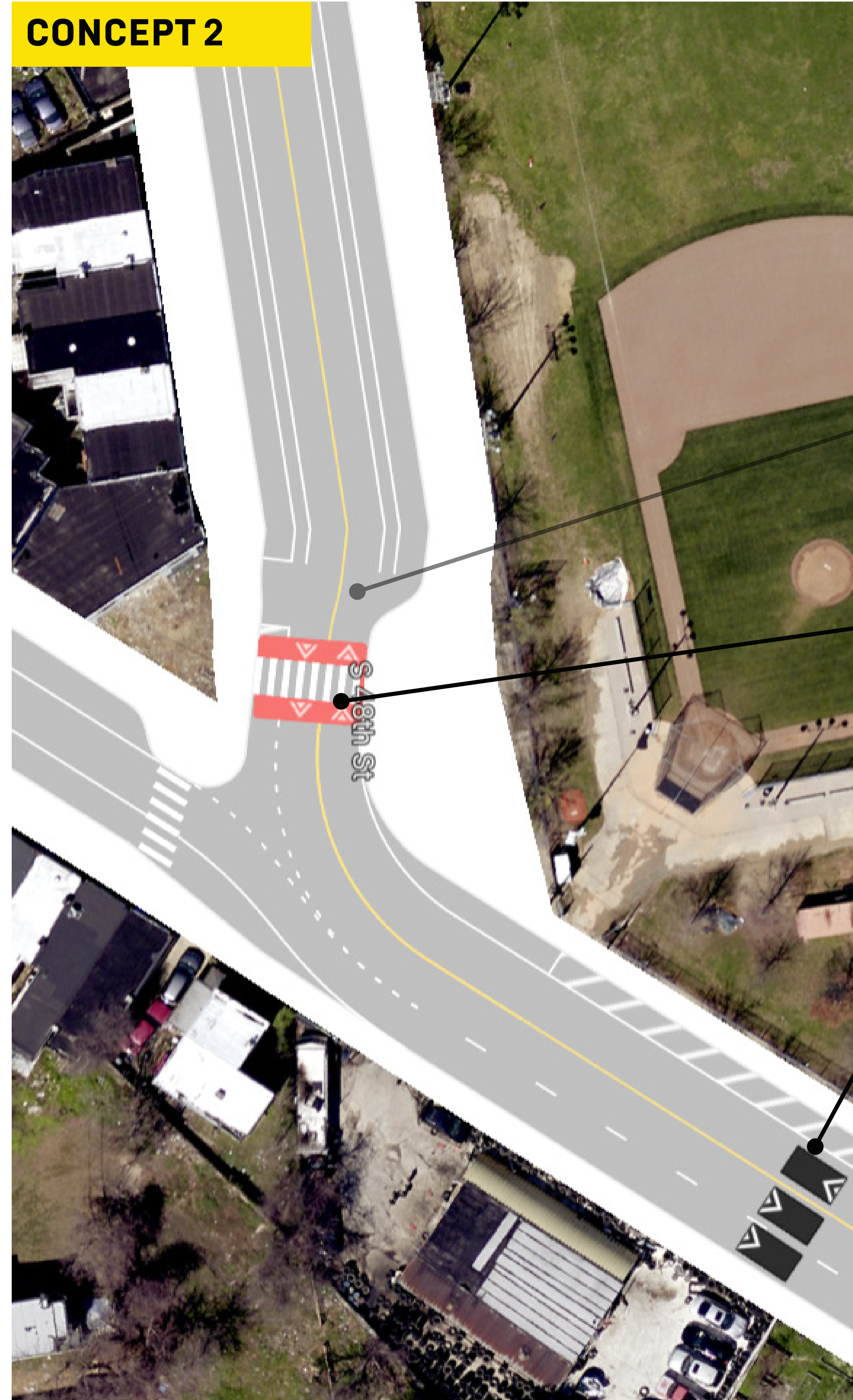
SHARPER TURN
Forces cars to slow down

RAISED INTERSECTION

EXISTING



CONCEPT 2



SHARPER TURN
Forces cars to slow down

RAISED CROSSWALK

SPEED CUSHIONS