

**LEMON HILL FESTIVAL  
NEIGHBORS**

**TRANSPORTATION  
INFORMATION SESSION**

**MAY 18, 2026**

# WELCOME!

## AGENDA

1. Fan Festival Overview
2. Public Safety Plan
3. Transportation Plan

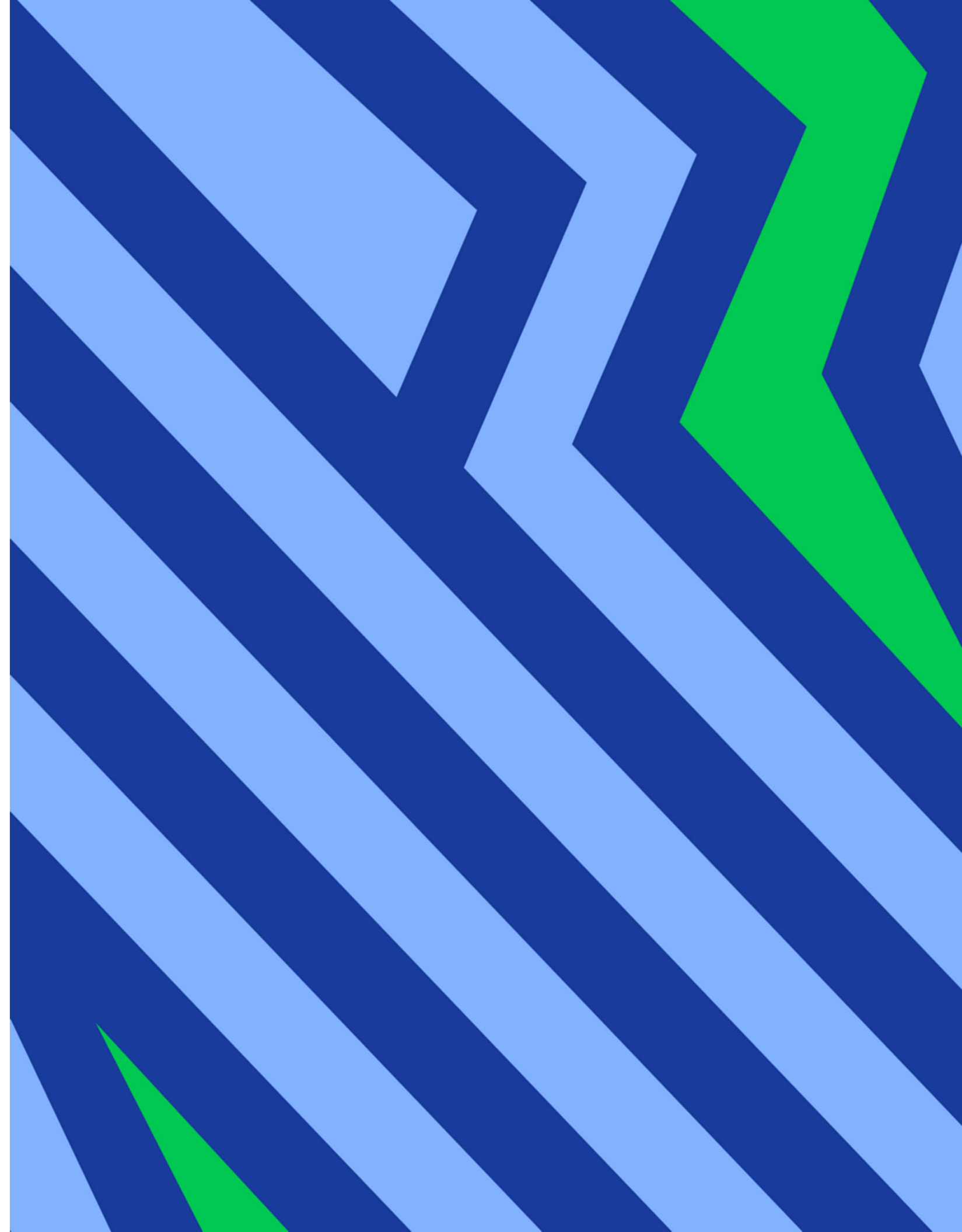


# **1. FAN FESTIVAL OVERVIEW**

**PHILLY SOCCER**

# OVERVIEW

- Event Dates: June 11-July 19
- Set up starts May 26<sup>th</sup>
- Hours of Operation and Experience
- Site Map
- Food & Beverage
- Daily Entertainment & Soccer Play
- Vendor Village





Fan Festival Perimeter

KELLY DR

POPLAR DR

SEDGLEY DR

GIRARD AVE

N 30TH ST

POPLAR ST

PARRISH ST

N 28TH ST

PENNOCK ST

BROWN ST

SEDGLEY DR

KELLY DR

PENNSYLVANIA AVE

FAIRMOUNT AVE

SCHUYLKILL RIVER

# FOOD & BEVERAGE

## Welcoming The World With A Philly Phlavor!



DAILY ENTERTAINMENT

Sounds from Philadelphia and the world!



# LET'S PLAY! BRAND AND SOCCER ACTIVATIONS



# VENDOR VILLAGE: LOCAL SMALL BUSINESS MARKETPLACE



# **2. PUBLIC SAFETY & COMMUNICATIONS PLAN**

**PHILA POLICE & OEM & OSE**

## COMMUNITY FACING PUBLIC SAFETY POSTURE

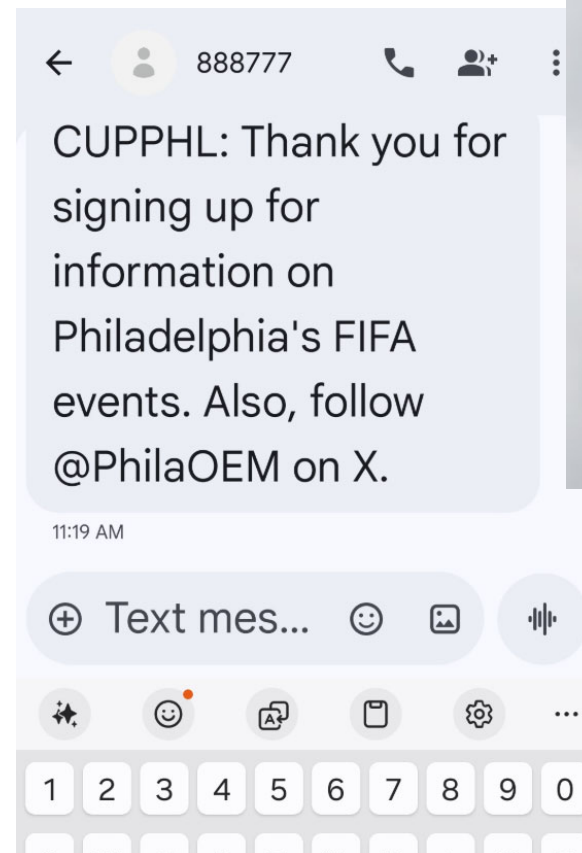
- Event command post at Lemon Hill for security and emergency response
- No anticipated impact to regular service delivery (PPD & PFD)
- Additional resources in neighboring communities during Fan Festival



# PUBLIC SAFETY COMMUNICATIONS

All communications are coordinated in a Joint Information System, led by the City of Philadelphia.

- [www.phila.gov/2026](http://www.phila.gov/2026)
  - 2026 Resource Spotlight Page
  - FIFA World Cup public safety blog
- City social media
- ReadyPhiladelphia
- City 2026 Mobile App



AMERICA'S 250<sup>TH</sup>  
**2026**  
CITY OF PHILADELPHIA

**PHILADELPHIA'S  
BIGGEST YEAR.**

DOWNLOAD  
**2026 Access  
Philly App**

Download on the App Store | GET IT ON Google Play

Photo courtesy of PHLCVB

The advertisement features a background image of the Independence Hall dome in Philadelphia. It includes two QR codes for downloading the app, one for the App Store and one for Google Play. A hand is shown holding a smartphone displaying the app's interface. The app interface includes the City of Philadelphia logo, Mayor Cherelle L. Parker's name, the slogan "One Philly, A United City. One America, A United Nation!", an "Explore" section with a search bar, "Trending Events" for June 14th (FIFA World Cup 2026 and Odunde Festival), and "Categories" for Arts & Culture, Business Networking, and Charity & Volunteer Events.

# **3. TRANSPORTATION PLAN**

**STREETS, OTIS, PPA, SEPTA,  
INDEGO**








# TRANSPORTATION

- Traffic Safety Improvements
- Road Closures
- Neighbor & Visitor Travel
  - Ridehailing
  - Transit Options & Service
  - Neighborhood Parking Management



# TRAFFIC SAFETY IMPROVEMENTS

## Lemon Hill Fan Fest Area Mobility & Traffic Safety Improvements

-  Fan Fest
-  Secure Perimeter
-  New Sidewalks
-  Upgraded Sidewalks
-  Road Repaving
-  New ADA Ramps
-  Upgraded ADA Ramps
-  Intersection Improvements
-  Traffic Signal Upgrade



**DRAFT**



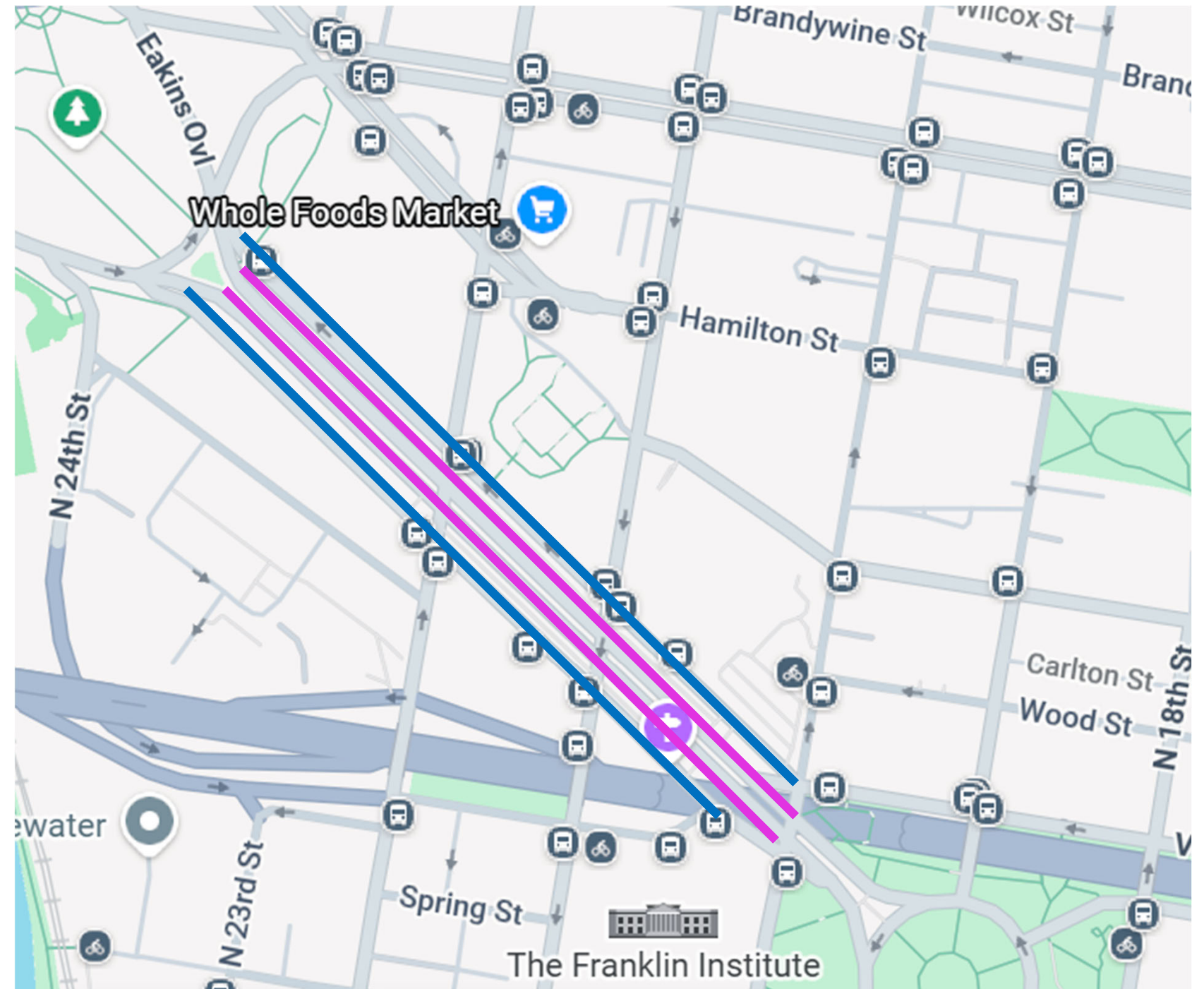
# ROAD CLOSURES: BEN FRANKLIN PARKWAY

## Outer Lanes:

- Closed Memorial Day – Labor Day (except around July 4<sup>th</sup>, where closure will switch with inner lanes)

## Inner Lanes:

- July 4<sup>th</sup> Concert & Prep, roughly 10 days before and after for set up and break down

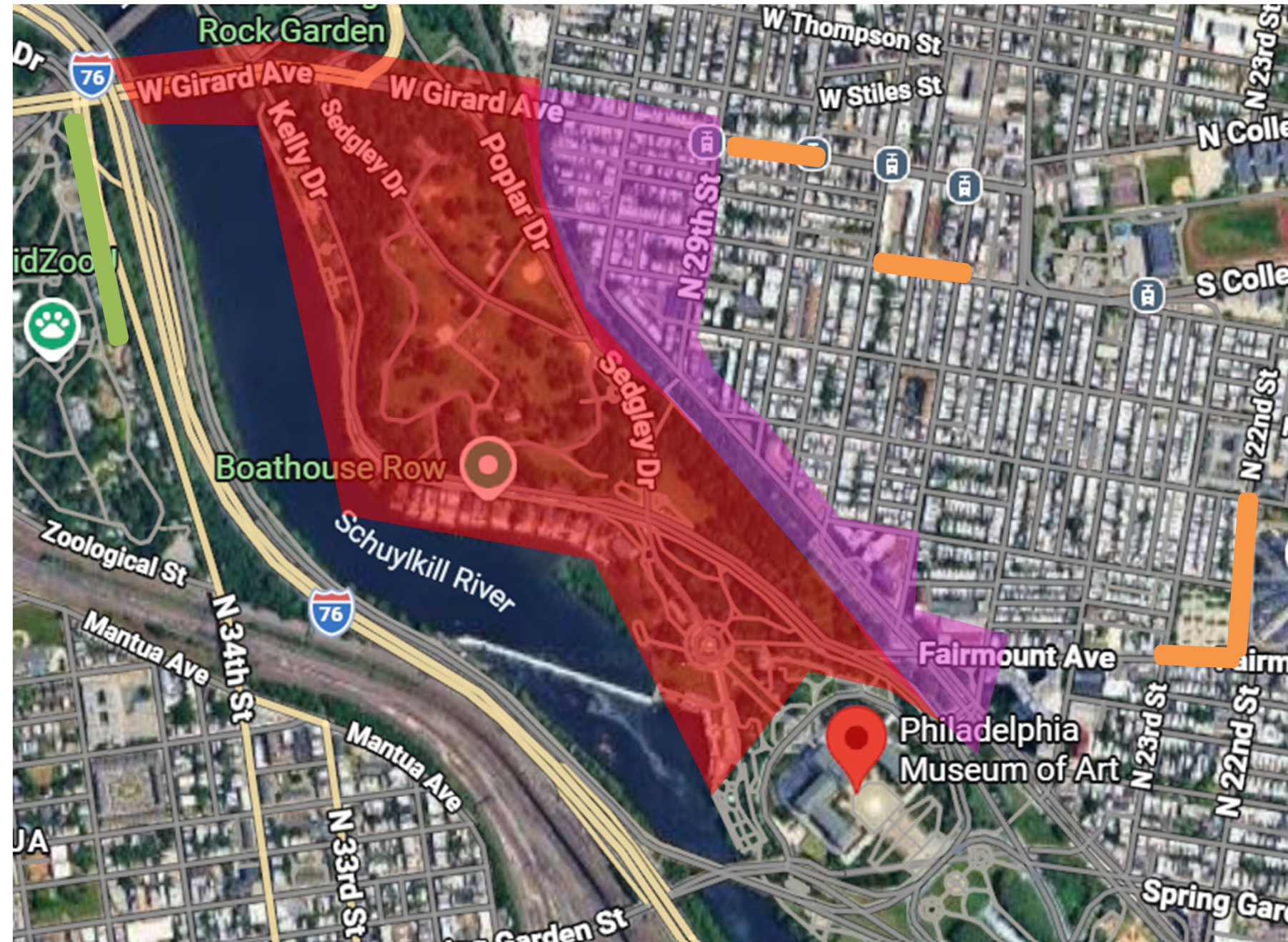


## NEIGHBOR & VISITOR TRAVEL: RIDEHAILING

**Red Area:** 24/7 geofence for 40 days

**Pink Area:** Geofence with specific hours

**Orange Areas:** drop off/pick up areas



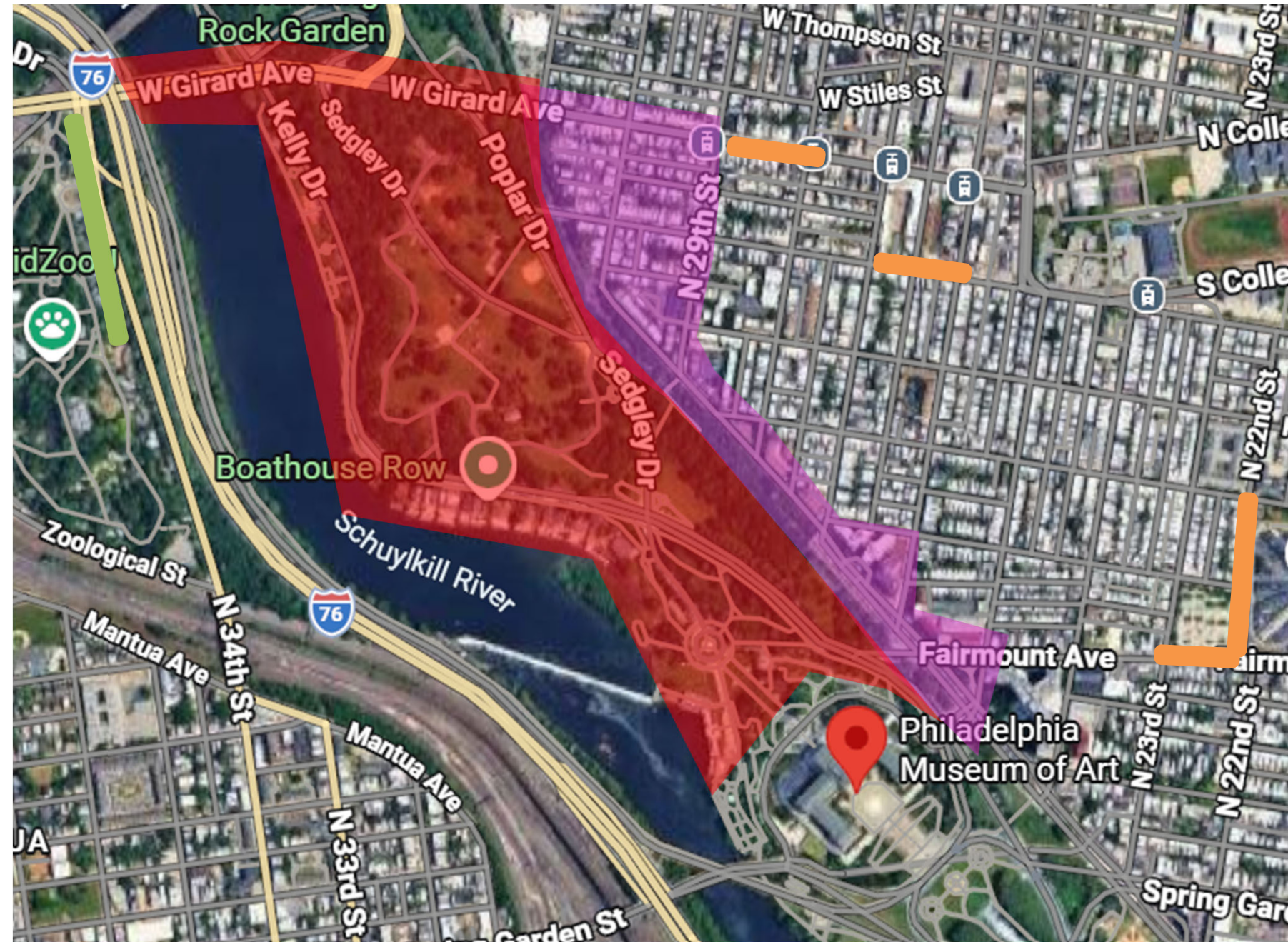
# NEIGHBOR & VISITOR TRAVEL: RIDEHAILING

Hours:

- Similar to Fan Festival Hours, which vary widely

Geofence exceptions for riders who:

- Order a wheelchair accessible vehicle (WAV)
- Disclose mobility issue to your driver



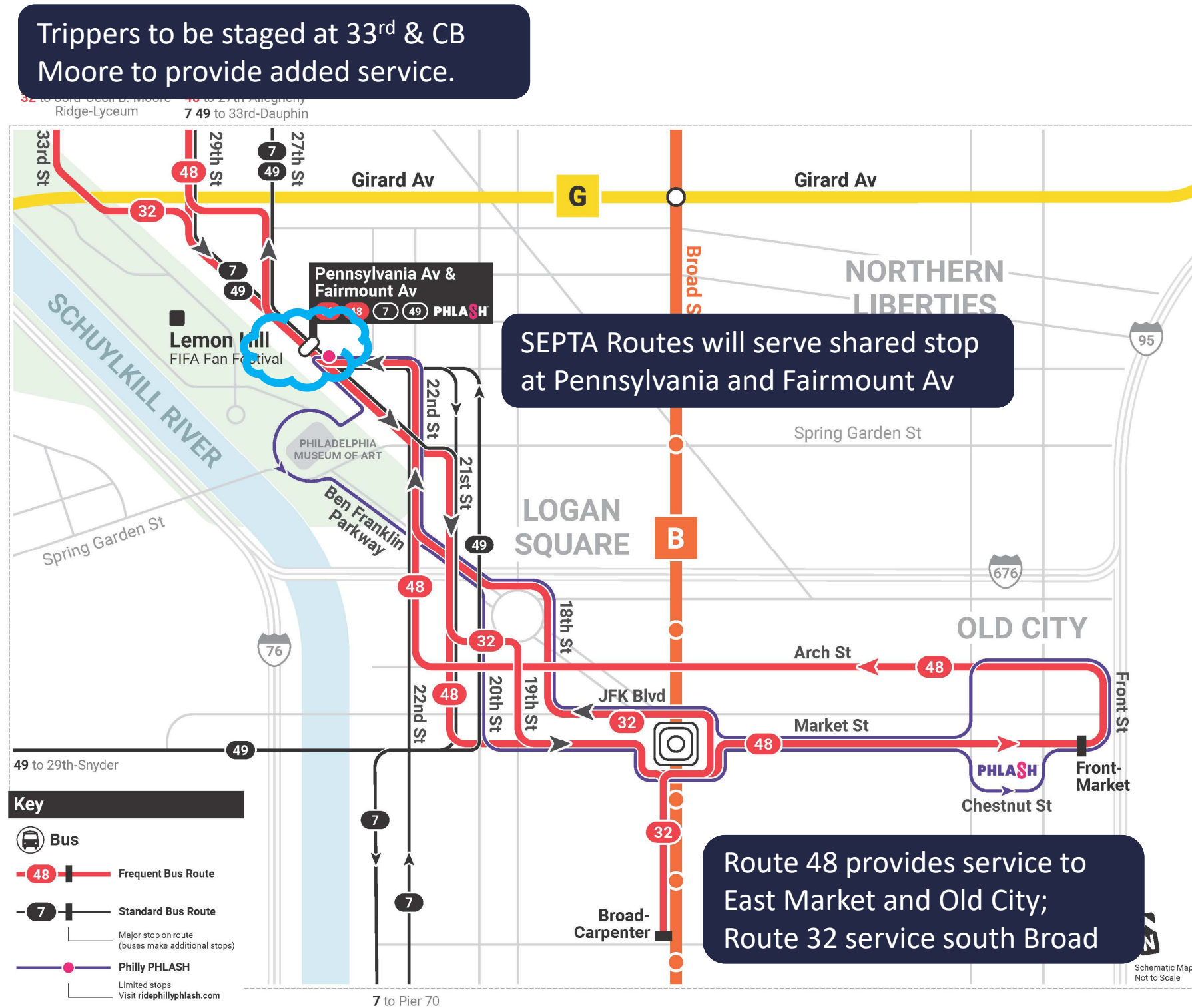


# NEIGHBOR & VISITOR TRAVEL: TRANSIT OPTIONS - SEPTA



**Routes 32 and 48** will provide frequent, high-capacity service connecting Lemon Hill to Center City, Old City, and South Broad hotels throughout the Fan Fest.

- **Routes 32 and 48 frequency increased to every 15 minutes or better, 7 days/week; articulated vehicles deployed for added capacity**
- **Routes detoured to serve shared stop at Pennsylvania & Fairmount Avenues** — coordinated with PHLASH to create a unified connection point
- **Trippers staged at 33rd Street and CB Moore for rapid deployment at peak demand**





## WORLD CUP 2026 UPDATES

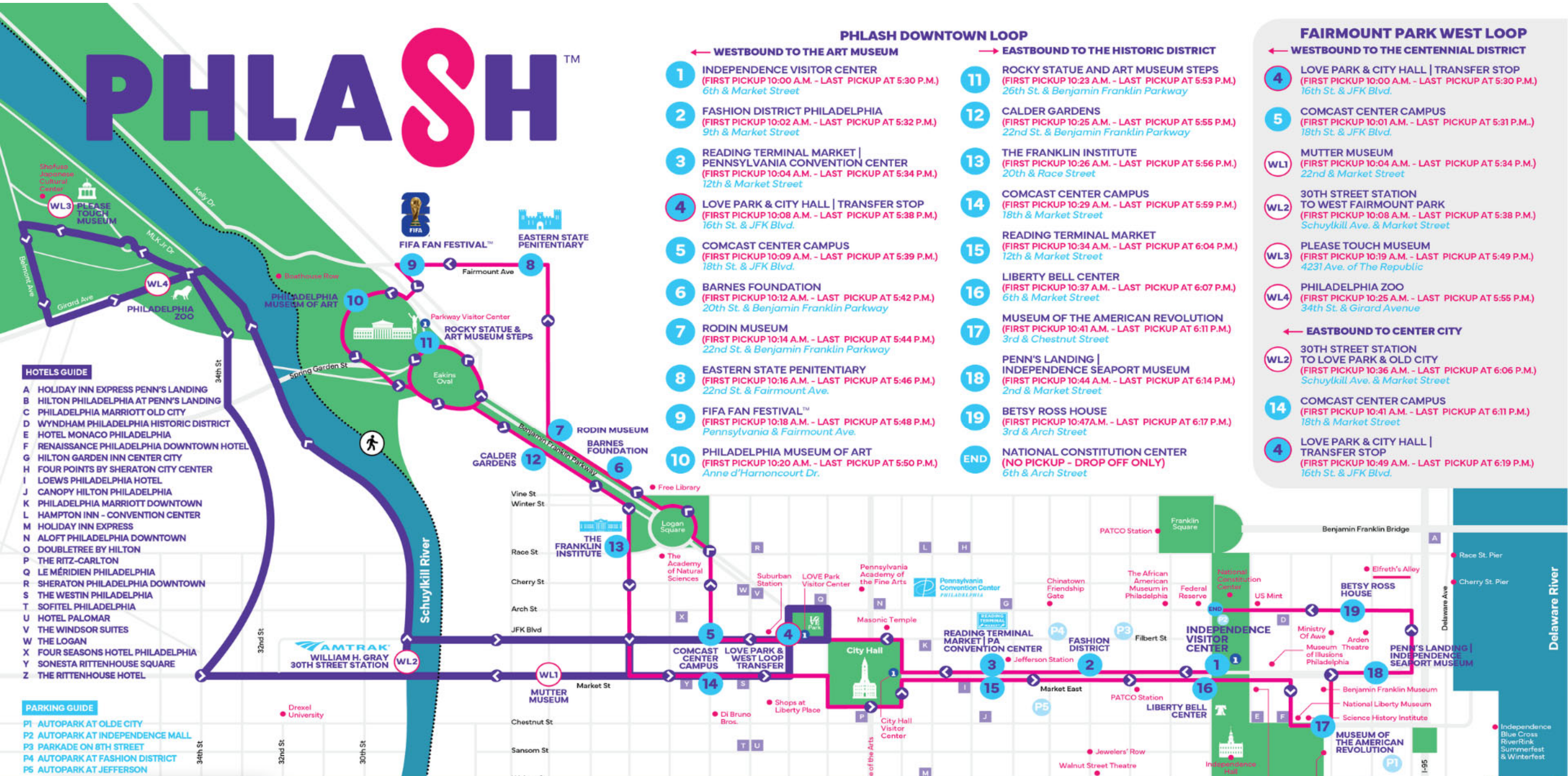
---

- **PHLASH Downtown Loop Stops at FIFA Fan Festival (Stop 9)**
- **Free PHLASH Passes for ALL World Cup and 2026 Volunteers**
- **Daily service begins May 25th - Aug 31st**
  - 10 am - 6 pm
    - First Pickup From Stop 1- 10:00 a.m.
    - Last Pickup from Stop 1- 5:30 p.m.
- **World Cup Surge Service Begins June 11**
  - More buses - increased capacity
  - Evening Hours to Match Fan Festival Schedule

# NEIGHBOR & VISITOR TRAVEL: TRANSIT OPTIONS



# PHLASH™



- HOTELS GUIDE**
- A HOLIDAY INN EXPRESS PENN'S LANDING
  - B HILTON PHILADELPHIA AT PENN'S LANDING
  - C PHILADELPHIA MARRIOTT OLD CITY
  - D WYNDHAM PHILADELPHIA HISTORIC DISTRICT
  - E HOTEL MONACO PHILADELPHIA
  - F RENAISSANCE PHILADELPHIA DOWNTOWN HOTEL
  - G HILTON GARDEN INN CENTER CITY
  - H FOUR POINTS BY SHERATON CITY CENTER
  - I LOEWS PHILADELPHIA HOTEL
  - J CANOPY HILTON PHILADELPHIA
  - K PHILADELPHIA MARRIOTT DOWNTOWN
  - L HAMPTON INN - CONVENTION CENTER
  - M HOLIDAY INN EXPRESS
  - N ALOFT PHILADELPHIA DOWNTOWN
  - O DOUBLETREE BY HILTON
  - P THE RITZ-CARLTON
  - Q LE MÉRIDIEN PHILADELPHIA
  - R SHERATON PHILADELPHIA DOWNTOWN
  - S THE WESTIN PHILADELPHIA
  - T SOFTEL PHILADELPHIA
  - U HOTEL PALOMAR
  - V THE WINDSOR SUITES
  - W THE LOGAN
  - X FOUR SEASONS HOTEL PHILADELPHIA
  - Y SONESTA RITTENHOUSE SQUARE
  - Z THE RITTENHOUSE HOTEL
- PARKING GUIDE**
- P1 AUTOPARK AT OLDE CITY
  - P2 AUTOPARK AT INDEPENDENCE MALL
  - P3 PARKADE ON 8TH STREET
  - P4 AUTOPARK AT FASHION DISTRICT
  - P5 AUTOPARK AT JEFFERSON

- PHLASH DOWNTOWN LOOP**
- ← WESTBOUND TO THE ART MUSEUM
- 1 INDEPENDENCE VISITOR CENTER (FIRST PICKUP 10:00 A.M. - LAST PICKUP AT 5:30 P.M.)  
6th & Market Street
  - 2 FASHION DISTRICT PHILADELPHIA (FIRST PICKUP 10:02 A.M. - LAST PICKUP AT 5:32 P.M.)  
9th & Market Street
  - 3 READING TERMINAL MARKET | PENNSYLVANIA CONVENTION CENTER (FIRST PICKUP 10:04 A.M. - LAST PICKUP AT 5:34 P.M.)  
12th & Market Street
  - 4 LOVE PARK & CITY HALL | TRANSFER STOP (FIRST PICKUP 10:08 A.M. - LAST PICKUP AT 5:38 P.M.)  
16th St. & JFK Blvd.
  - 5 COMCAST CENTER CAMPUS (FIRST PICKUP 10:09 A.M. - LAST PICKUP AT 5:39 P.M.)  
18th St. & JFK Blvd.
  - 6 BARNES FOUNDATION (FIRST PICKUP 10:12 A.M. - LAST PICKUP AT 5:42 P.M.)  
20th St. & Benjamin Franklin Parkway
  - 7 RODIN MUSEUM (FIRST PICKUP 10:14 A.M. - LAST PICKUP AT 5:44 P.M.)  
22nd St. & Benjamin Franklin Parkway
  - 8 EASTERN STATE PENITENTIARY (FIRST PICKUP 10:16 A.M. - LAST PICKUP AT 5:46 P.M.)  
22nd St. & Fairmount Ave.
  - 9 FIFA FAN FESTIVAL™ (FIRST PICKUP 10:18 A.M. - LAST PICKUP AT 5:48 P.M.)  
Pennsylvania & Fairmount Ave.
  - 10 PHILADELPHIA MUSEUM OF ART (FIRST PICKUP 10:20 A.M. - LAST PICKUP AT 5:50 P.M.)  
Anne d'Harnoncourt Dr.
- EASTBOUND TO THE HISTORIC DISTRICT
- 11 ROCKY STATUE AND ART MUSEUM STEPS (FIRST PICKUP 10:23 A.M. - LAST PICKUP AT 5:53 P.M.)  
26th St. & Benjamin Franklin Parkway
  - 12 CALDER GARDENS (FIRST PICKUP 10:25 A.M. - LAST PICKUP AT 5:55 P.M.)  
22nd St. & Benjamin Franklin Parkway
  - 13 THE FRANKLIN INSTITUTE (FIRST PICKUP 10:26 A.M. - LAST PICKUP AT 5:56 P.M.)  
20th & Race Street
  - 14 COMCAST CENTER CAMPUS (FIRST PICKUP 10:29 A.M. - LAST PICKUP AT 5:59 P.M.)  
18th & Market Street
  - 15 READING TERMINAL MARKET (FIRST PICKUP 10:34 A.M. - LAST PICKUP AT 6:04 P.M.)  
12th & Market Street
  - 16 LIBERTY BELL CENTER (FIRST PICKUP 10:37 A.M. - LAST PICKUP AT 6:07 P.M.)  
6th & Market Street
  - 17 MUSEUM OF THE AMERICAN REVOLUTION (FIRST PICKUP 10:41 A.M. - LAST PICKUP AT 6:11 P.M.)  
3rd & Chestnut Street
  - 18 PENN'S LANDING | INDEPENDENCE SEAPORT MUSEUM (FIRST PICKUP 10:44 A.M. - LAST PICKUP AT 6:14 P.M.)  
2nd & Market Street
  - 19 BETSY ROSS HOUSE (FIRST PICKUP 10:47 A.M. - LAST PICKUP AT 6:17 P.M.)  
3rd & Arch Street
  - END NATIONAL CONSTITUTION CENTER (NO PICKUP - DROP OFF ONLY)  
6th & Arch Street

- FAIRMOUNT PARK WEST LOOP**
- ← WESTBOUND TO THE CENTENNIAL DISTRICT
- 4 LOVE PARK & CITY HALL | TRANSFER STOP (FIRST PICKUP 10:00 A.M. - LAST PICKUP AT 5:30 P.M.)  
16th St. & JFK Blvd.
  - 5 COMCAST CENTER CAMPUS (FIRST PICKUP 10:01 A.M. - LAST PICKUP AT 5:31 P.M.)  
18th St. & JFK Blvd.
  - WL1 MUTTER MUSEUM (FIRST PICKUP 10:04 A.M. - LAST PICKUP AT 5:34 P.M.)  
22nd & Market Street
  - WL2 30TH STREET STATION TO WEST FAIRMOUNT PARK (FIRST PICKUP 10:08 A.M. - LAST PICKUP AT 5:38 P.M.)  
Schuylkill Ave. & Market Street
  - WL3 PLEASE TOUCH MUSEUM (FIRST PICKUP 10:19 A.M. - LAST PICKUP AT 5:49 P.M.)  
4231 Ave. of The Republic
  - WL4 PHILADELPHIA ZOO (FIRST PICKUP 10:25 A.M. - LAST PICKUP AT 5:55 P.M.)  
34th St. & Girard Avenue
- ← EASTBOUND TO CENTER CITY
- WL2 30TH STREET STATION TO LOVE PARK & OLD CITY (FIRST PICKUP 10:36 A.M. - LAST PICKUP AT 6:06 P.M.)  
Schuylkill Ave. & Market Street
  - 14 COMCAST CENTER CAMPUS (FIRST PICKUP 10:41 A.M. - LAST PICKUP AT 6:11 P.M.)  
18th & Market Street
  - 4 LOVE PARK & CITY HALL | TRANSFER STOP (FIRST PICKUP 10:49 A.M. - LAST PICKUP AT 6:19 P.M.)  
16th St. & JFK Blvd.

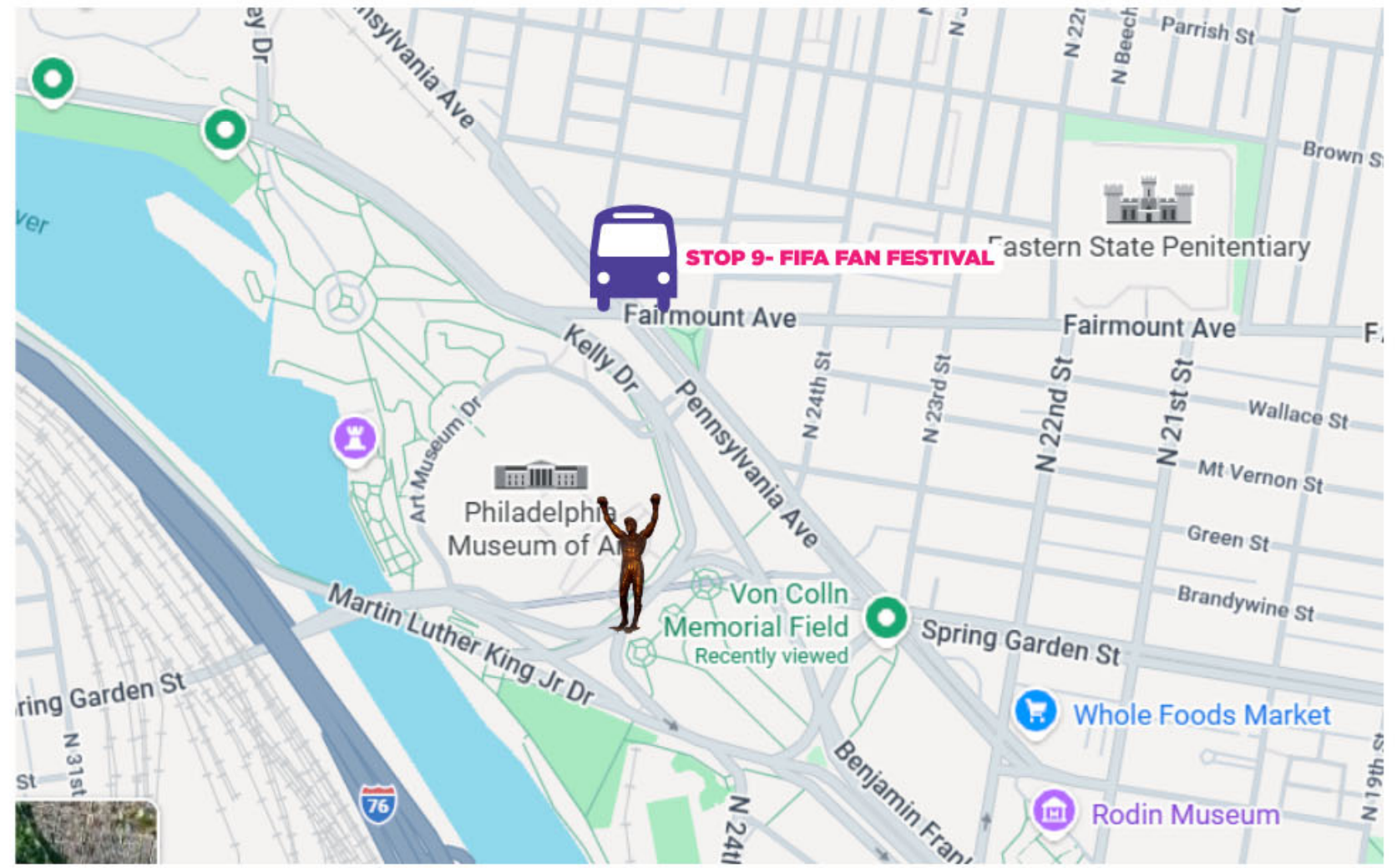
**PICKUPS EVERY 15, 10, OR 7.5 MINUTES**

**DEPENDENT ON THE DAY**



## DOWNTOWN LOOP

- **FIFA Fan Festival @ Lemon Hill - STOP 9**
  - 2525 Pennsylvania Avenue
  - 0.4 mile walk to Fan Festival entrance



# NEIGHBOR & VISITOR TRAVEL: TRANSIT OPTIONS

- LOVE Park Shuttle



# NEIGHBOR & VISITOR TRAVEL: TRANSIT OPTIONS - INDEGO



## Infrastructure & Operations

- Lemon Hill Fan Zone – *100 dock temp station*
- Enhanced Balancing & E-batt Swapping in CC

## Marketing & Promotion

- World Cup Pass
- Paid & Earned Media
- Enhanced User Experience via Custom Web & App Features

## Staffing

- Increased staffing for operations and customer support



# NEIGHBOR & VISITOR TRAVEL: NEIGHBORHOOD PARKING MANAGEMENT



## LEMON HILL RESIDENT NOTICE FIFA WORLD CUP 26™ PARKING CHANGES

### Residential Parking Access Only

To support the FIFA World Cup 26™ Fan Festival at Lemon Hill, temporary parking restrictions will be in place to protect neighborhood access.

June 11 – July 19, 2026

Only vehicles with approved residential permits (no cost) may park on neighborhood streets. No general event parking will be allowed.

### HOW TO GET YOUR TEMPORARY PERMIT:

Apply Online at:

- [www.philapark.org/LemonHill](http://www.philapark.org/LemonHill)

- \*There is **no cost** to obtain the temporary residential permit.\*
- \*A dedicated online application form will be available soon.\*

Apply In Person at:

- Philadelphia Parking Authority Permit Office 35 N. 8th Street, Philadelphia, PA

### WHAT YOU'LL NEED:

- Proof of Residency
  - (Lease, utility bill, or PA driver's license)
- Vehicle Registration
  - (For each vehicle needing a permit)

### WHAT YOU'LL RECEIVE:

- Virtual Residential Permits (No Cost)
- Your license plate will be registered digitally
- Two (2) Visitor Day Passes Per Household
  - For guests or service vehicles
  - No vehicle? You still qualify for visitor passes

### ENFORCEMENT & IMPACT

- Increased patrols
- Resident-only parking
- No festival parking permitted

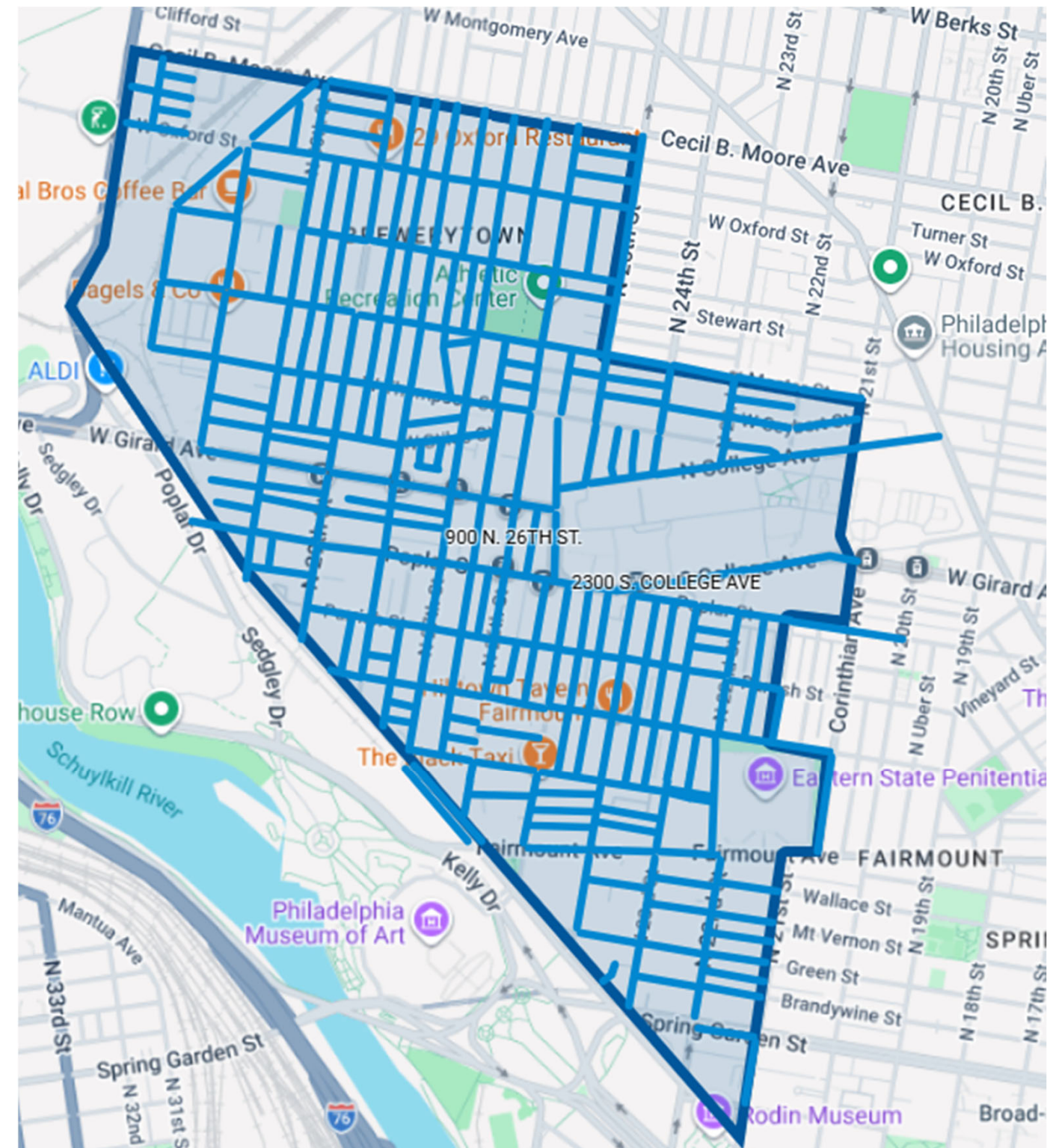


@Philaparking

## NEED HELP?

Call: 215-683-9730

Visit: [www.philapark.org/Len](http://www.philapark.org/Len)

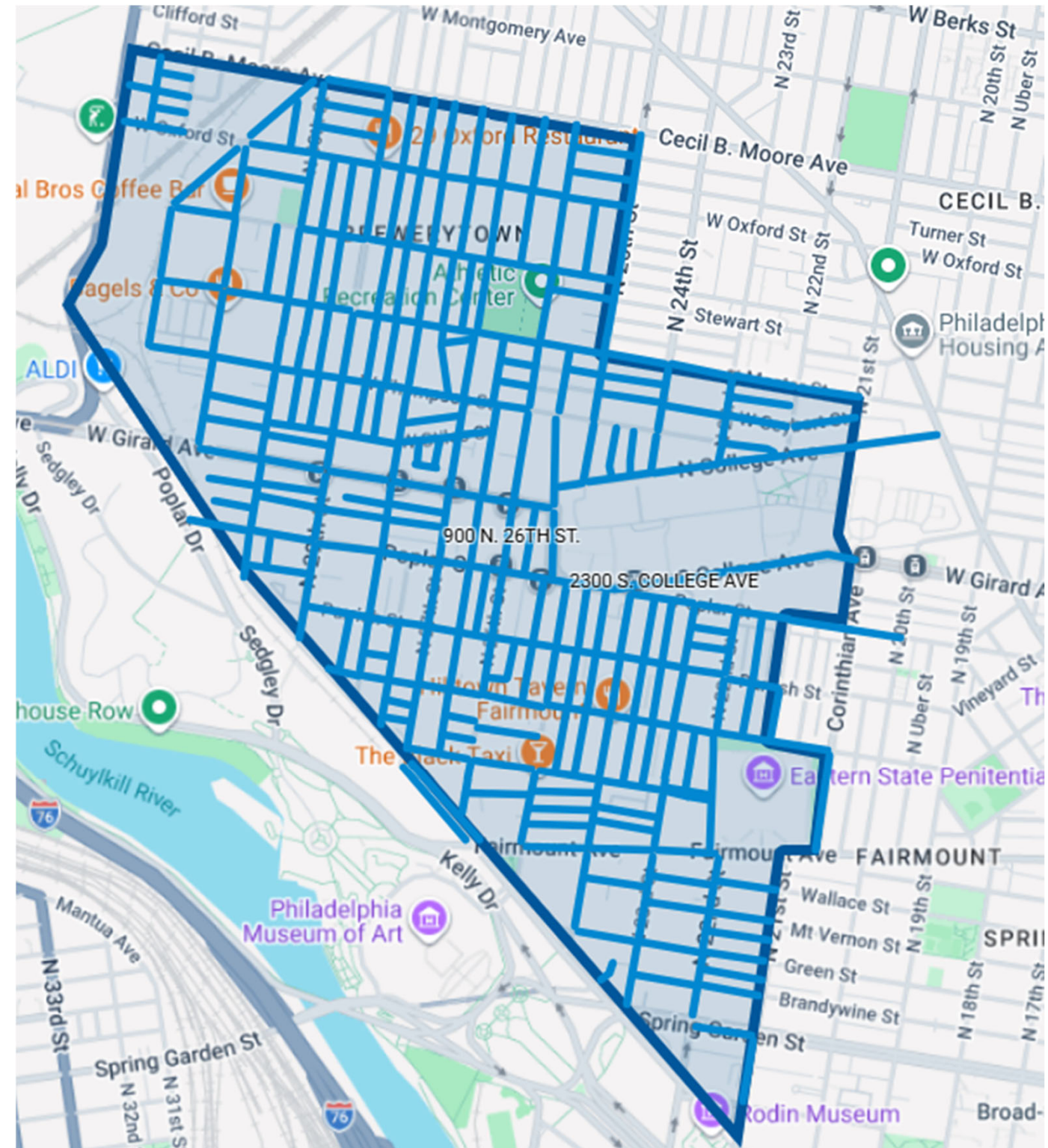


# NEIGHBOR & VISITOR TRAVEL: NEIGHBORHOOD PARKING MANAGEMENT



Increased PPA patrols will help prevent festival attendee parking from overwhelming neighborhood streets.

Only vehicles with the permit can park on neighborhood streets during festival times.



# NEIGHBOR & VISITOR TRAVEL: NEIGHBORHOOD PARKING MANAGEMENT



philapark.org

socialism-si... New Tab Google Community College... Google Google

PHILADELPHIA Parking Authority ACCREDITED PARKING ORGANIZATION

TICKETS ABOUT AIRPORT GARAGES/LOTS TAXI & LIMO PARKING BUS AUCTIONS CAMERA ENFORCEMENT

### ADMINISTRATIVE SERVICES

( Click icons below )

- BOARD MEETINGS
- PROCUREMENT & CONTRACTS
- RIGHT-TO-KNOW REQUESTS
- CAREER OPPORTUNITIES

### ADDITIONAL SERVICES

( Click icons below )

- TAXI & RIDESHARE INQUIRIES
- VEHICLE AUCTIONS
- FAQs
- CONTACT US

## WHAT YOU NEED TO KNOW NOW



### Lemon Hill Temporary Residential Parking Permits

As Philadelphia prepares to host the FIFA World Cup 26<sup>th</sup> Fan Festival at Lemon Hill, the Philadelphia Parking Authority is implementing temporary parking measures to help protect residential access during the tournament.

From **Thursday, June 11th, through Sunday, July 19, 2026**, residential parking permits **will be required** for all vehicles parked on the street within the Lemon Hill area. The interactive map below highlights the permit zone boundaries and streets where the temporary permits are required.

[CLICK HERE TO APPLY](#)

# NEIGHBOR & VISITOR TRAVEL: NEIGHBORHOOD PARKING MANAGEMENT



## Frequently Asked Questions:

- **All residents with vehicles:** apply, even if you have an existing RPP
- **All residents:** Can get 2 visitors passes
- **Businesses:** Can get 10 passes for employees and patrons
- **Business corridors with parking kiosks and no RPP zones:** will see no change

## Apply in person:

- **May 16<sup>th</sup>:** Girard Avenue Street Festival
- **May 20<sup>th</sup>:** Park to Broad Business Meet-Up
- **Thursdays:** Farmers Market at Eastern State Penitentiary
- And more!

Email [fanfest2026@phila.gov](mailto:fanfest2026@phila.gov) with other  
questions or concerns

**THANK YOU!**

