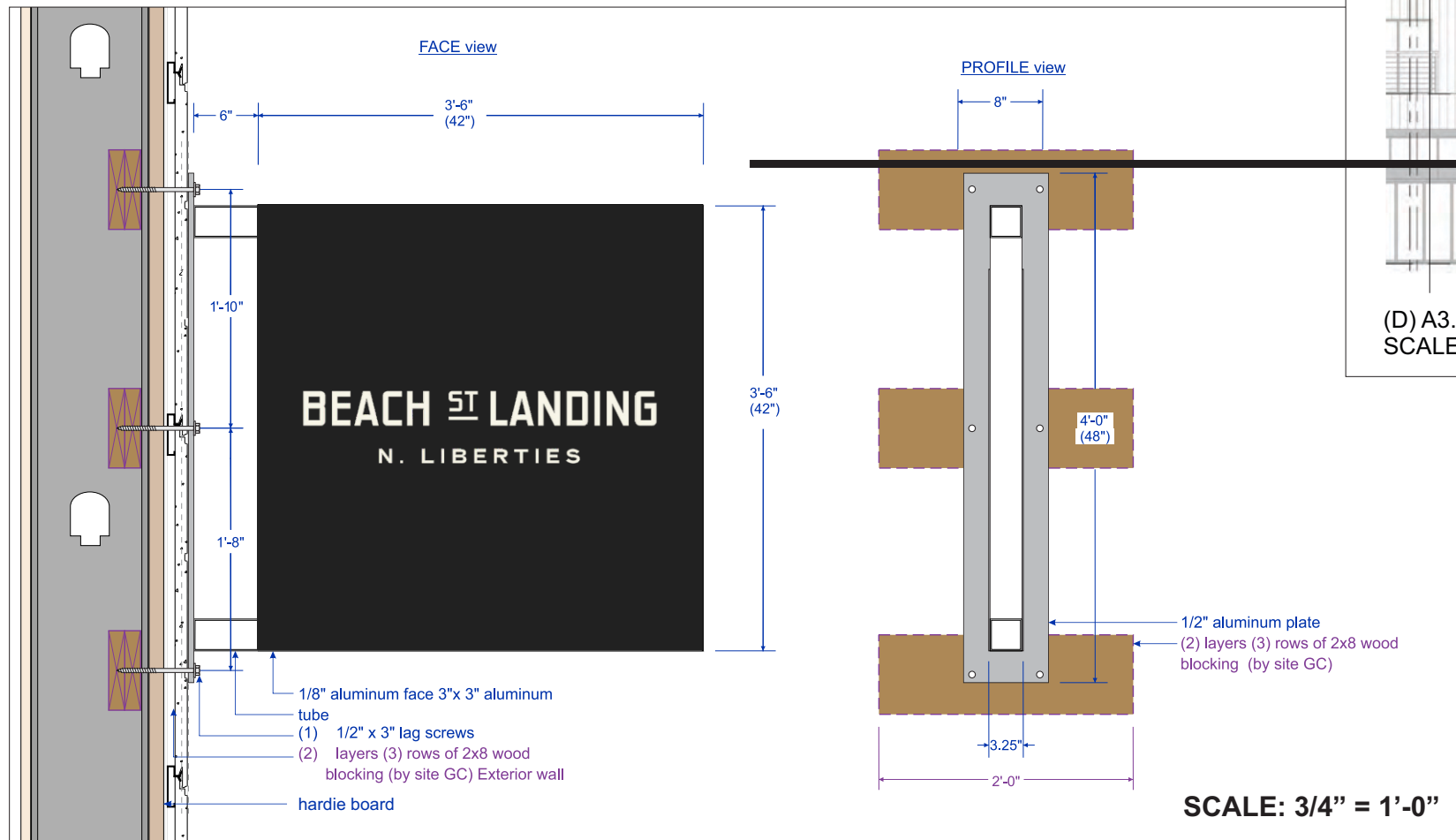


SPECIFICATIONS Blade sign NON-ILLUMINATED
 1/8" ACP face panels (front and back) Direct-to-board flat printed graphics Frame and supports are 3" x 3" aluminum tube
 1/2" aluminum plate for mounting

INSTALLATION Mount method
 Site GC to provide 2x wood blocking at fastener location for sign mounting Sign mounts with 1/2" x 3" lag screws

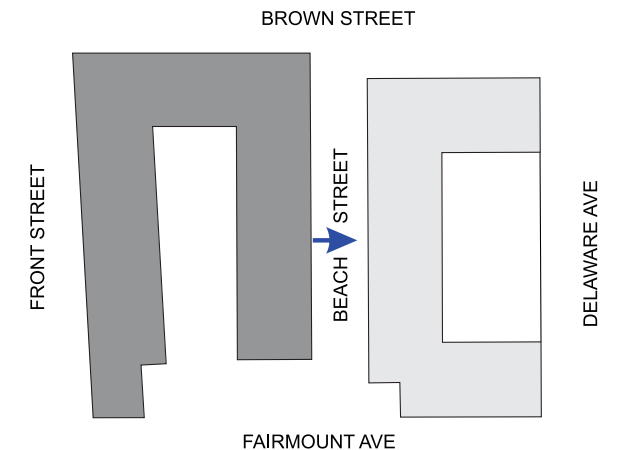
VECTOR ART NEEDED



(D) A3.1:1 EAST BUILDING - BEACH STREET ELEVATION
 SCALE: 1/16" = 1'

SPECIFICATIONS
 Blade sign NON-ILLUMINATED
 1/8" ACP face panels (front and back) Direct-to-board flat printed graphics Frame and supports are 3" x 3" aluminum tube
 1/2" aluminum plate for mounting

INSTALLATION
 Mount method
 Site GC to provide 2x wood blocking at fastener location for sign mounting Sign mounts with 1/2" x 3" lag screws

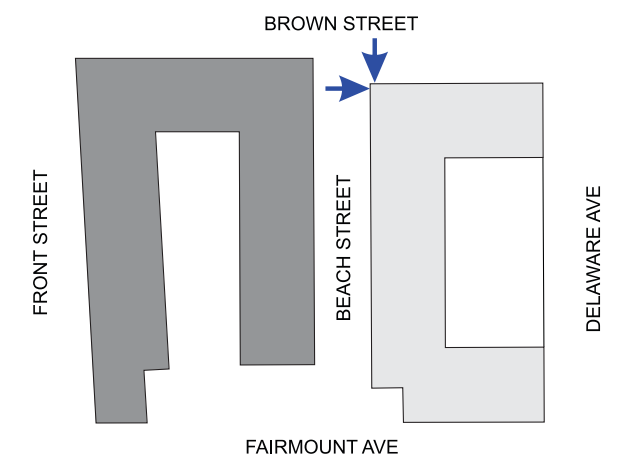


SIGNAGE: EO1.5 & EO1.6_PHOTO RENDERING



SPECIFICATIONS
 Blade sign NON-ILLUMINATED
 1/8" ACP face panels (front and back) Direct-to-board flat printed graphics
 Frame and supports are 3" x 3" aluminum tube
 1/2" aluminum plate for mounting

INSTALLATION
 Mount method
 Sign mounts with 1/2" x 3" lag screws



BEACH STREET LANDING

LOCATION: 700 N Delaware Ave
 Philadelphia, PA 19123

SCALE: NTS

PG: 3 of 7

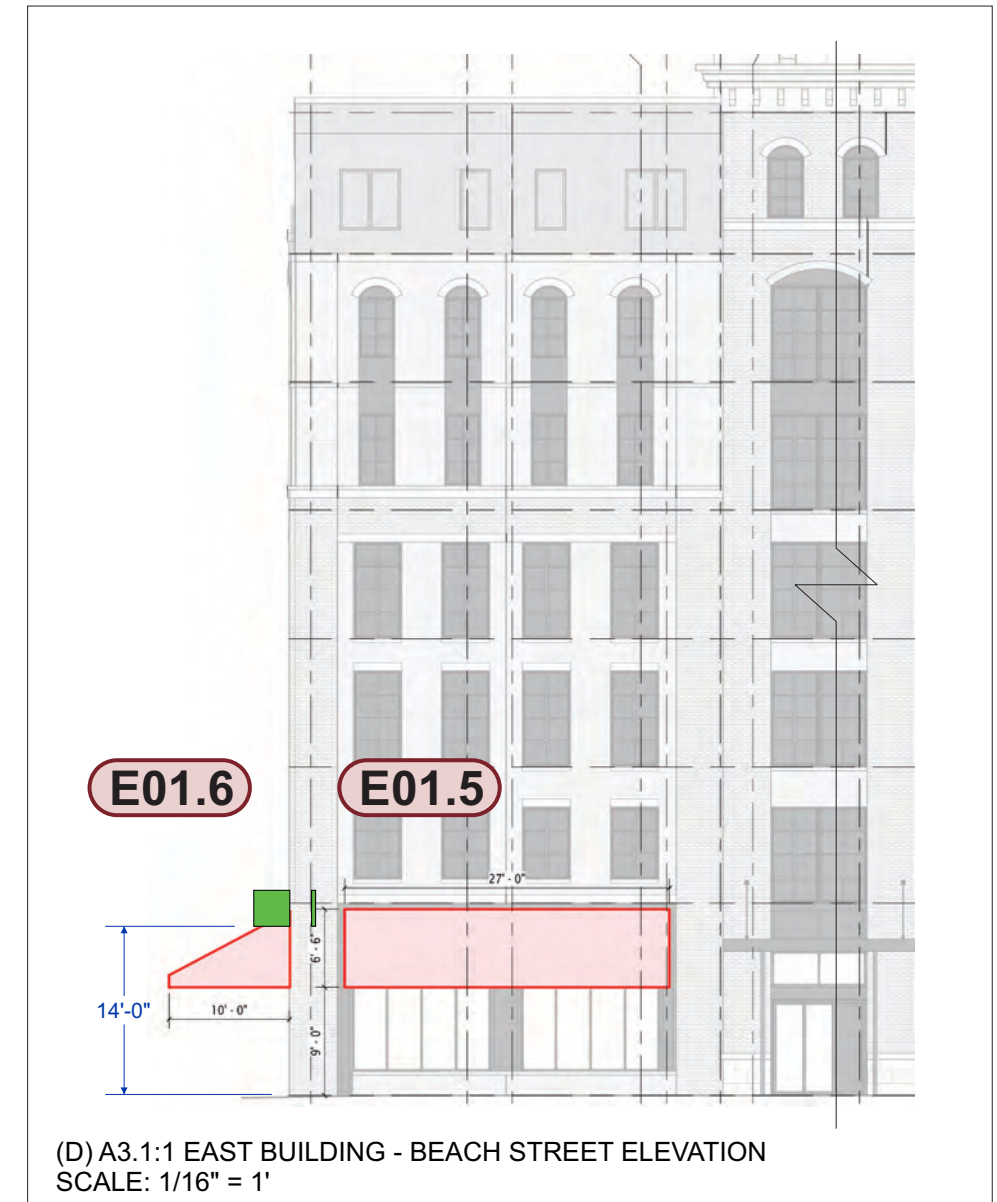
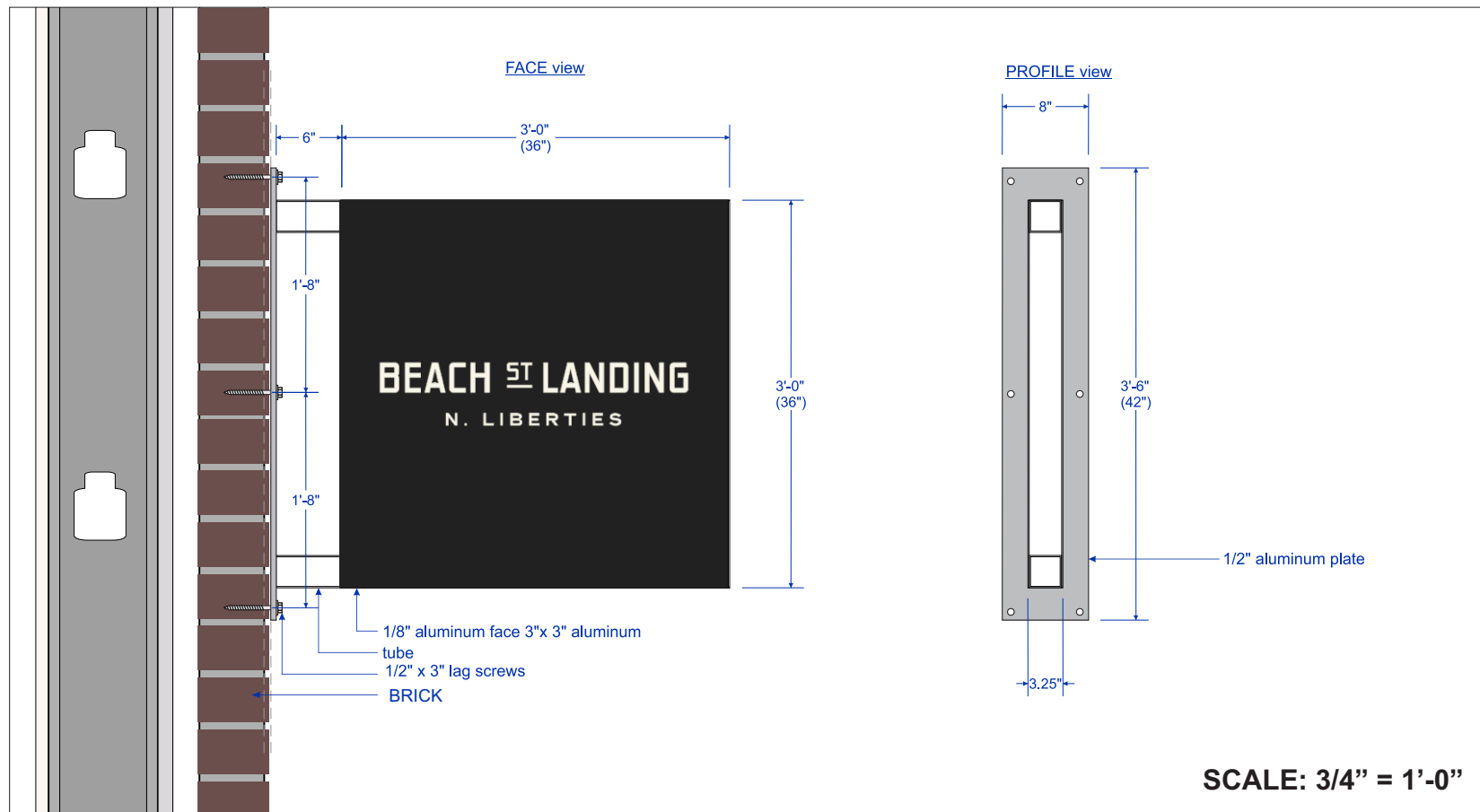
DATE:	02/27/25	05/19/25
	03/03/25	04/07/26
	03/10/25	04/20/26
	03/20/25	04/30/26
	03/21/25	

DRAWN BY
 nm

215-827-6500 • 215-827-6501 fax
howardc@formansign.com
©2007 Forman sign company. All rights reserved. No part of this document or the related files may be reproduced or transmitted in any form, by any means (electronic, copying, or otherwise) without the prior written permission of forman sign company.



VECTOR ART NEEDED



SPECIFICATIONS

Blade sign NON-ILLUMINATED

1/8" ACP face panels (front and back)

Direct-to-board flat printed graphics

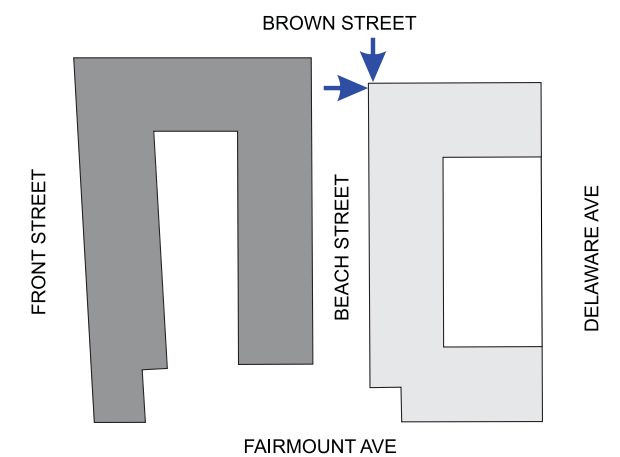
Frame and supports are 3" x 3" aluminum tube

1/2" aluminum plate for mounting

INSTALLATION

Mount method

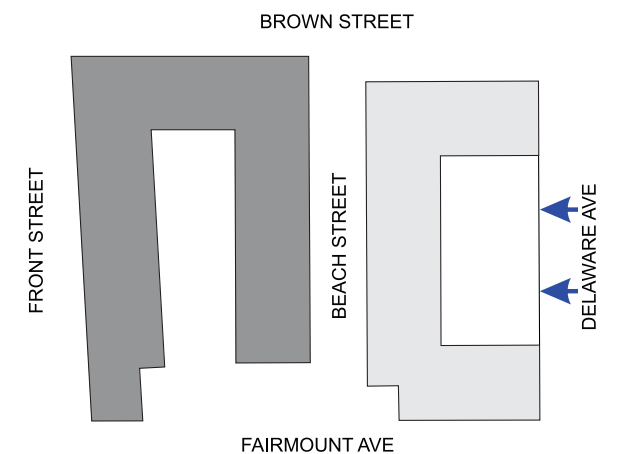
Sign mounts with 1/2" x 3" lag screws





SPECIFICATIONS
 Blade sign NON-ILLUMINATED
 1/8" ACP face panels (front and back) Direct-to-board flat printed graphics
 Frame and supports are 3" x 3" aluminum tube
 1/2" aluminum plate for mounting

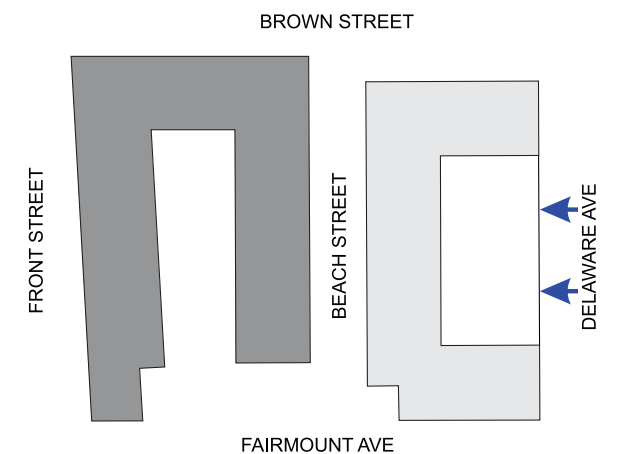
INSTALLATION
 Mount method
 Sign mounts with 1/2" x 3" lag screws



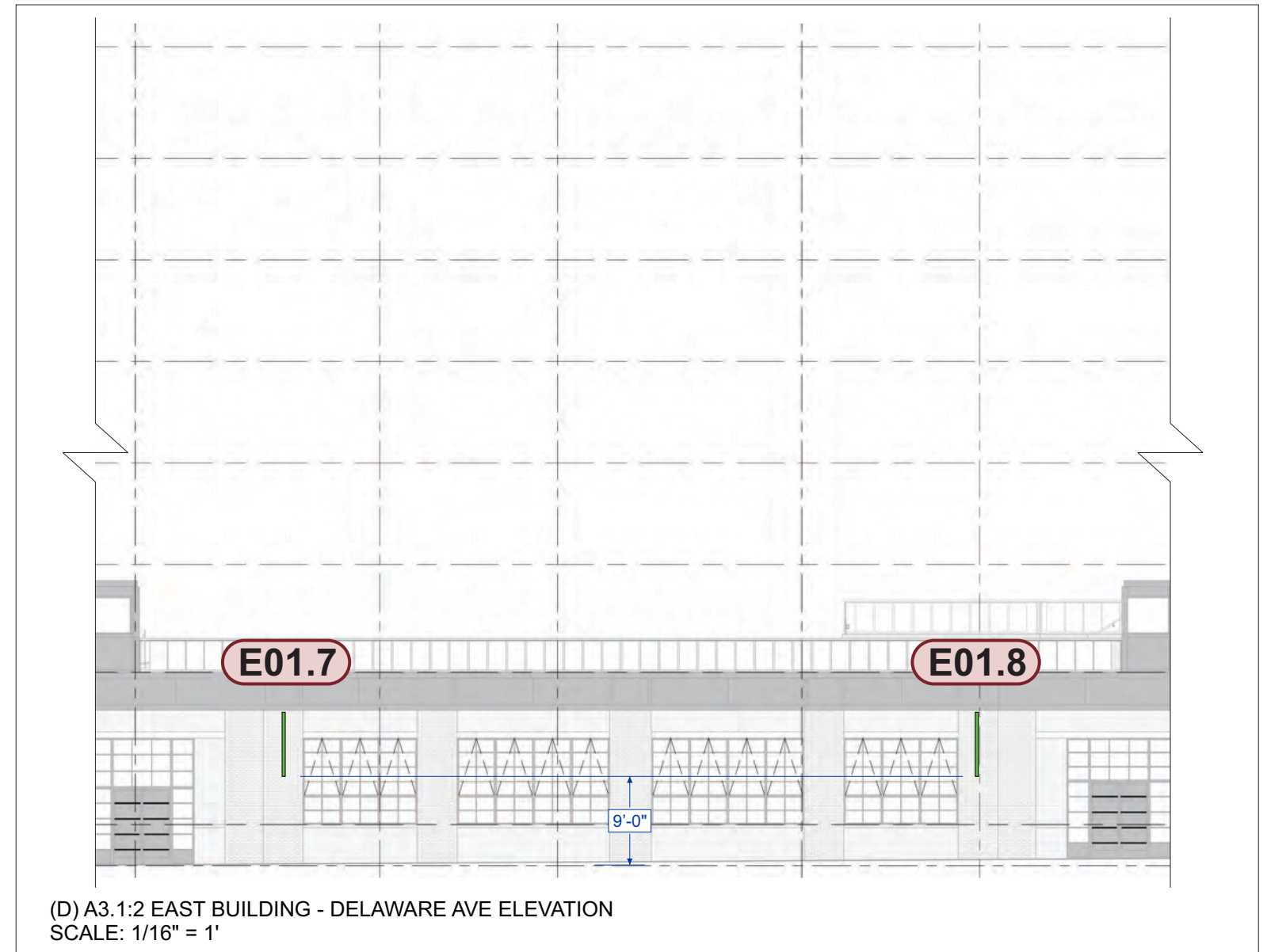
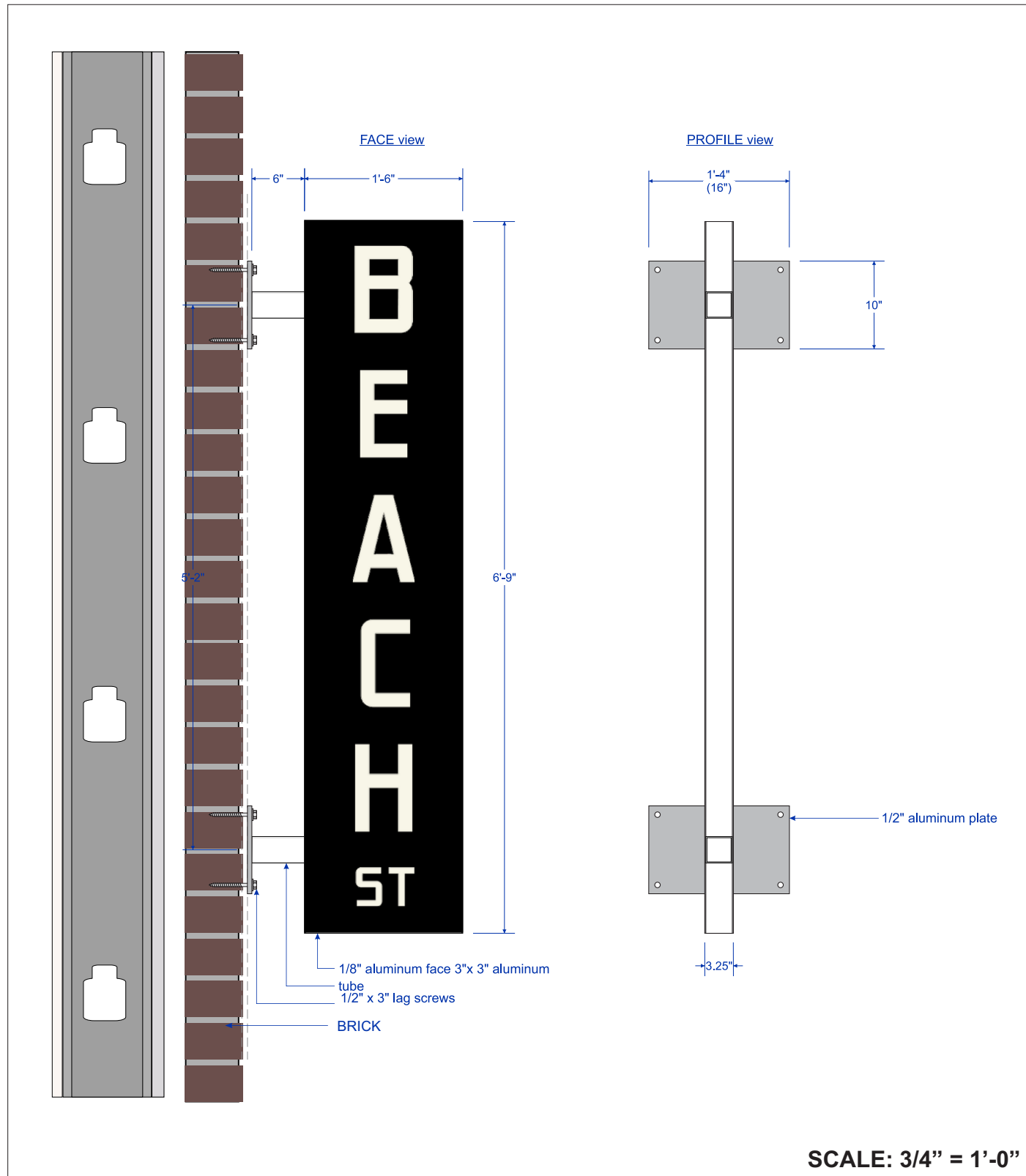


SPECIFICATIONS
 Blade sign NON-ILLUMINATED
 1/8" ACP face panels (front and back) Direct-to-board flat printed graphics
 Frame and supports are 3" x 3" aluminum tube
 1/2" aluminum plate for mounting

INSTALLATION
 Mount method
 Sign mounts with 1/2" x 3" lag screws



VECTOR ART NEEDED



SPECIFICATIONS

Blade sign NON-ILLUMINATED
1/8" ACP face panels (front and back) Direct-to-board flat printed graphics
Frame and supports are 3" x 3" aluminum tube
1/2" aluminum plate for mounting

INSTALLATION

Mount method
Sign mounts with 1/2" x 3" lag screws

