

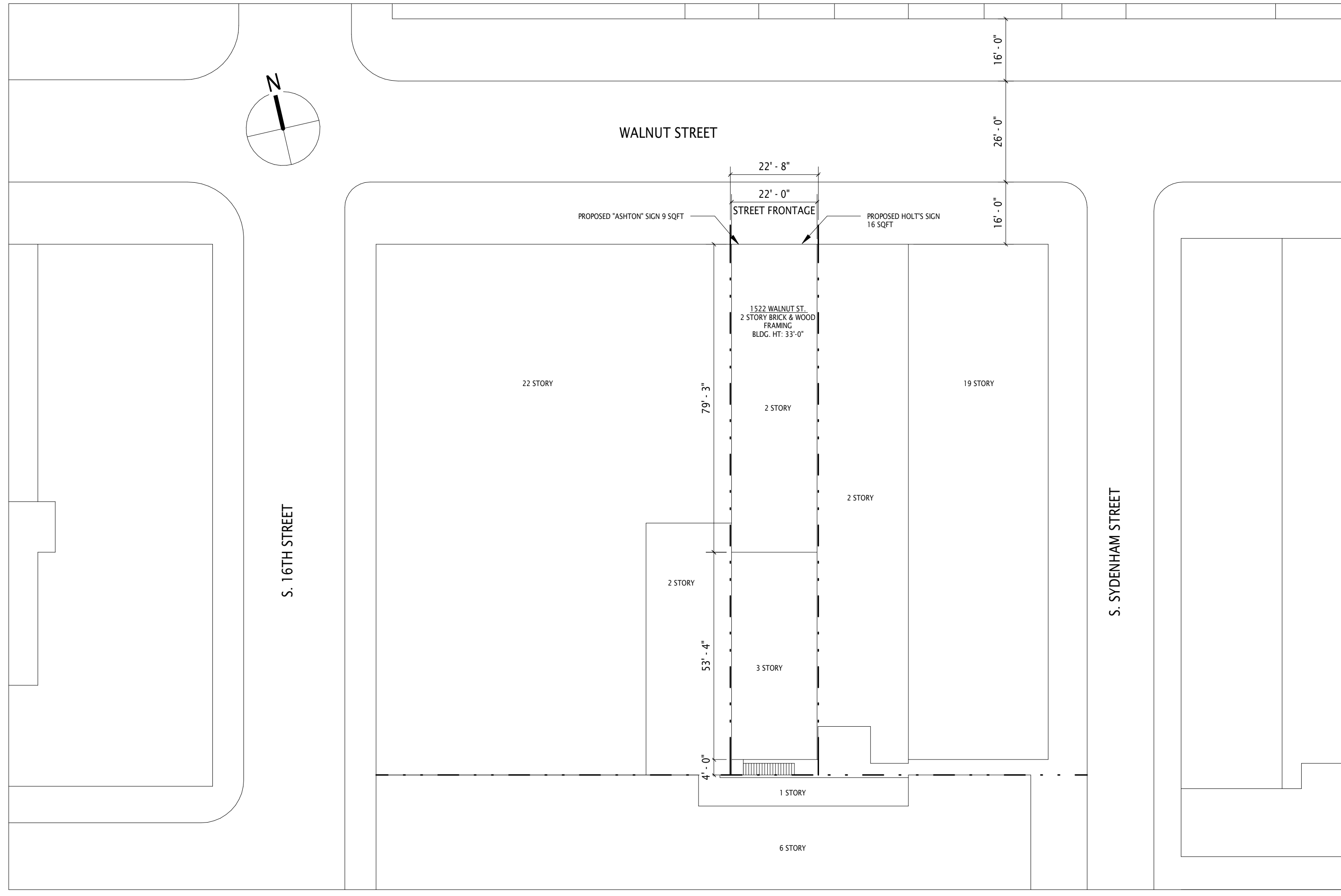
JERRY ROLLER, AIA
jroller@jkrparchitects.com
215.928.9331

DAN VALLACCHI
dvallacchi@jkrparchitects.com
215.928.9331

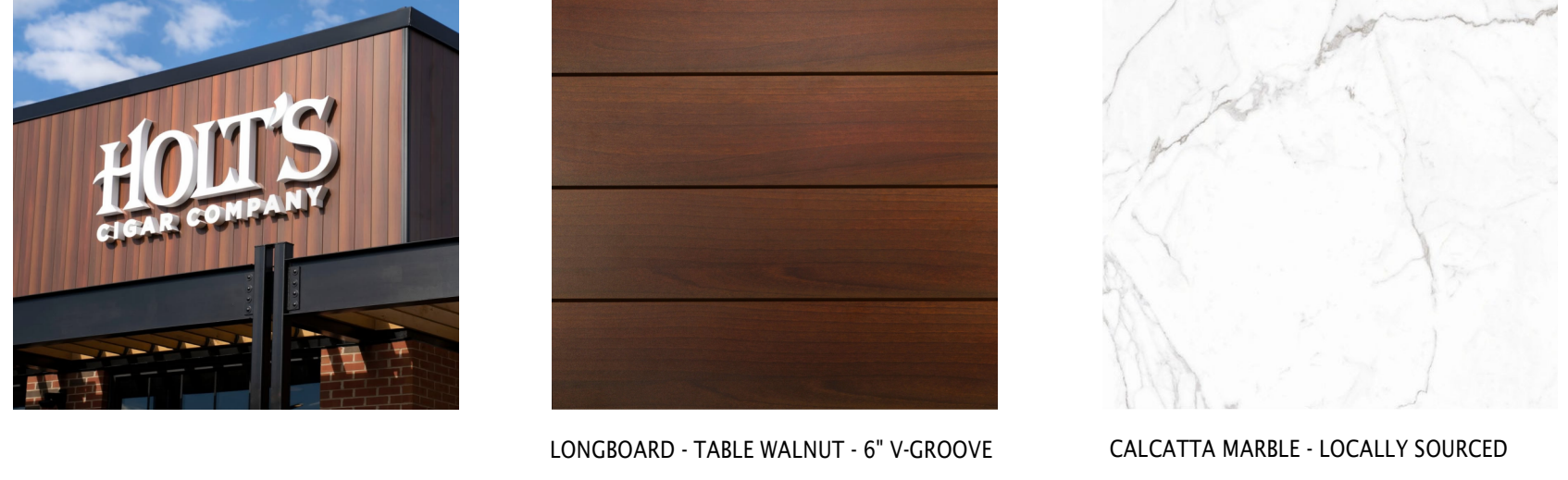
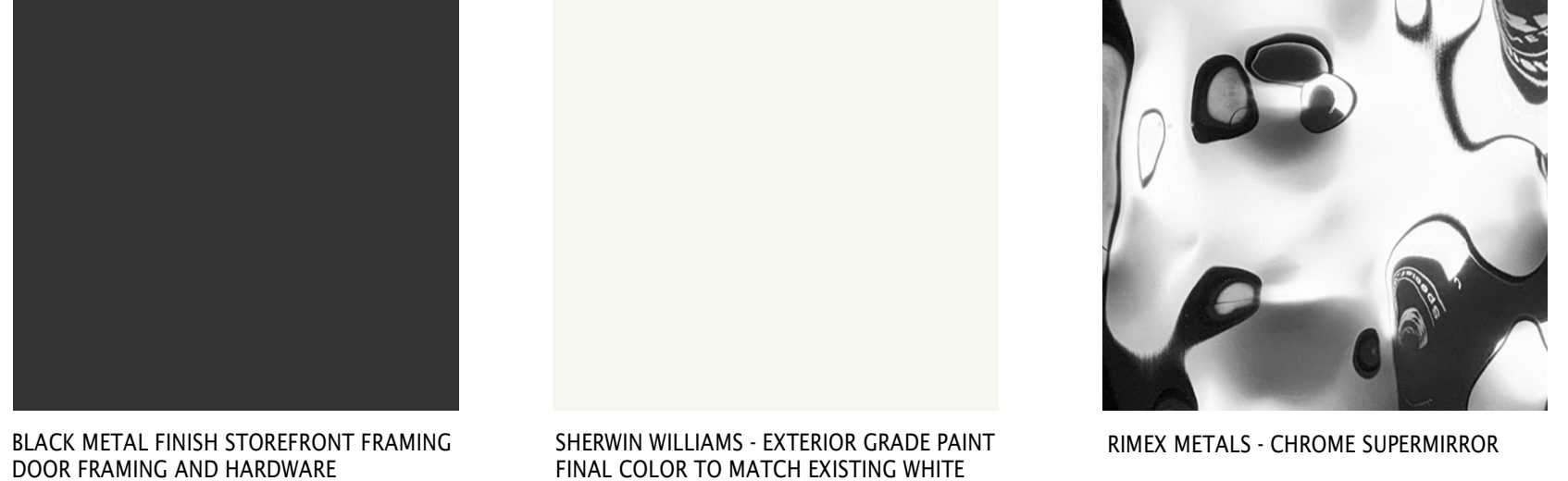
OWNER/CLIENT
HOLT'S CIGAR COMPANY
12270 TOWNSD ROAD
PHILADELPHIA, PA 19154
215.676.3908

MEP ENGINEERING
HOLSTEIN WHITE
2800 HORIZON BLVD, SUITE 503
TREVISO, PA 19053
215.322.7711

STRUCTURAL ENGINEERING
LARSEN & LANDIS
11 W. THOMPSON STREET
PHILADELPHIA, PA 19125
215.232.7207



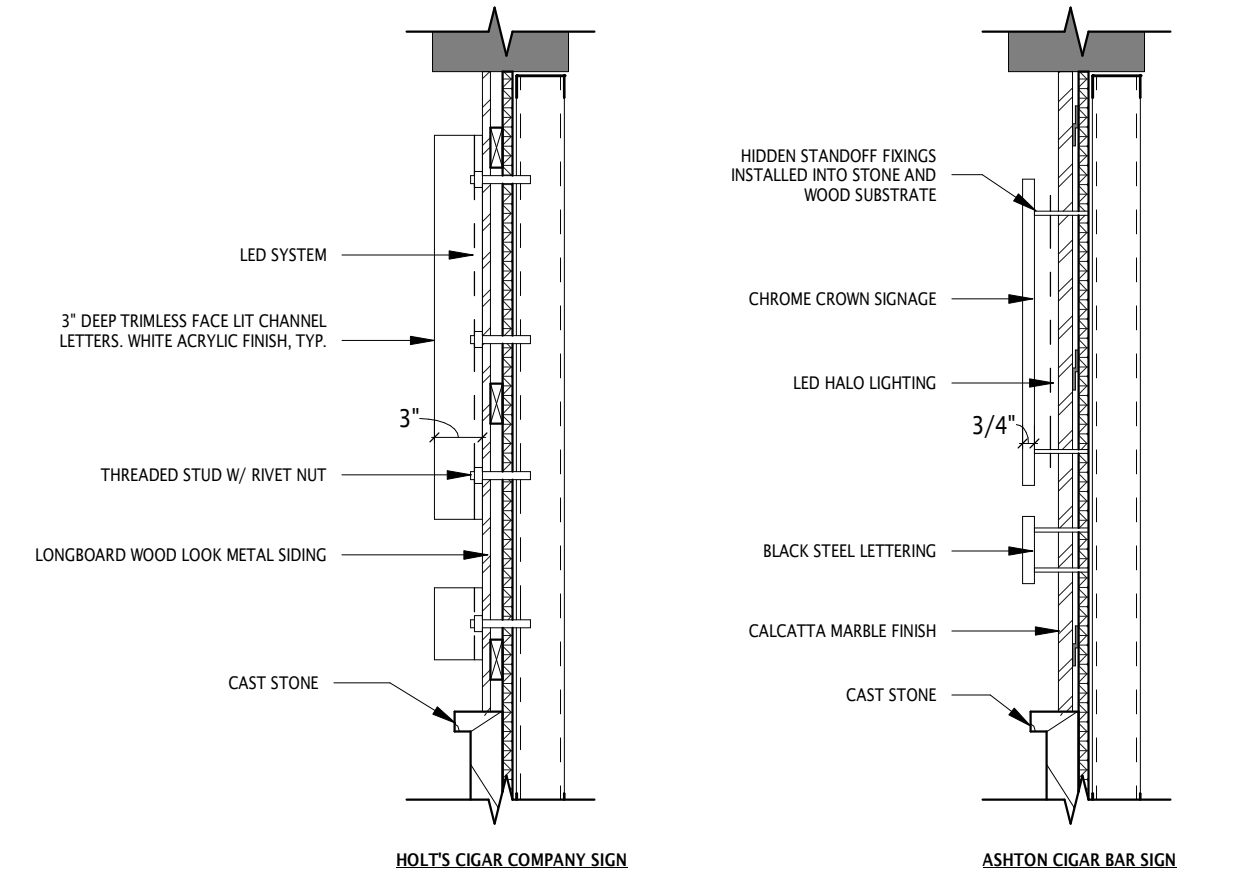
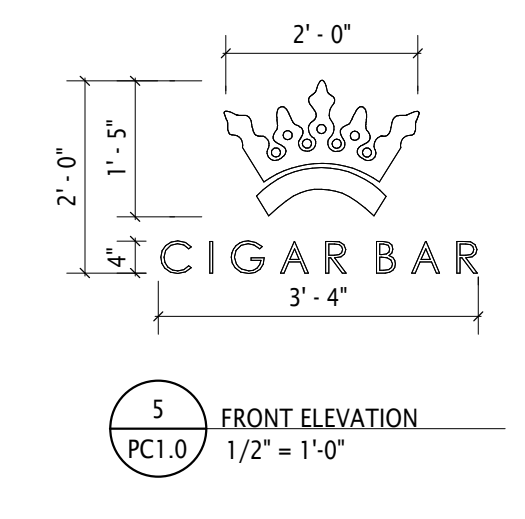
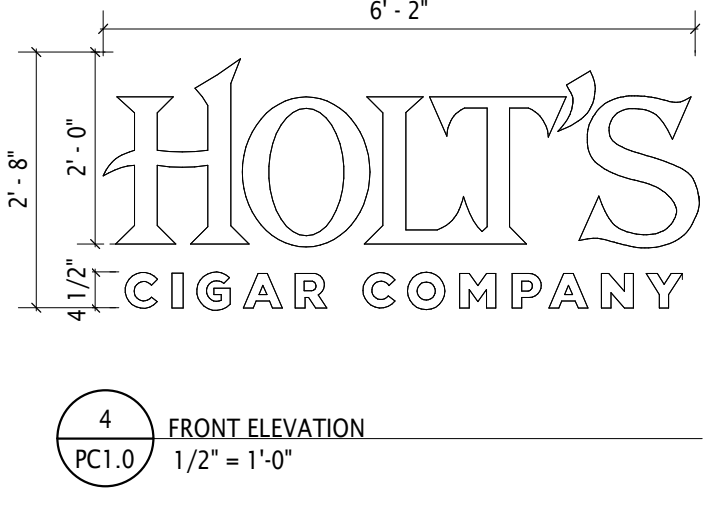
1 Site Plan
PCI.0 3/64" = 1'-0"



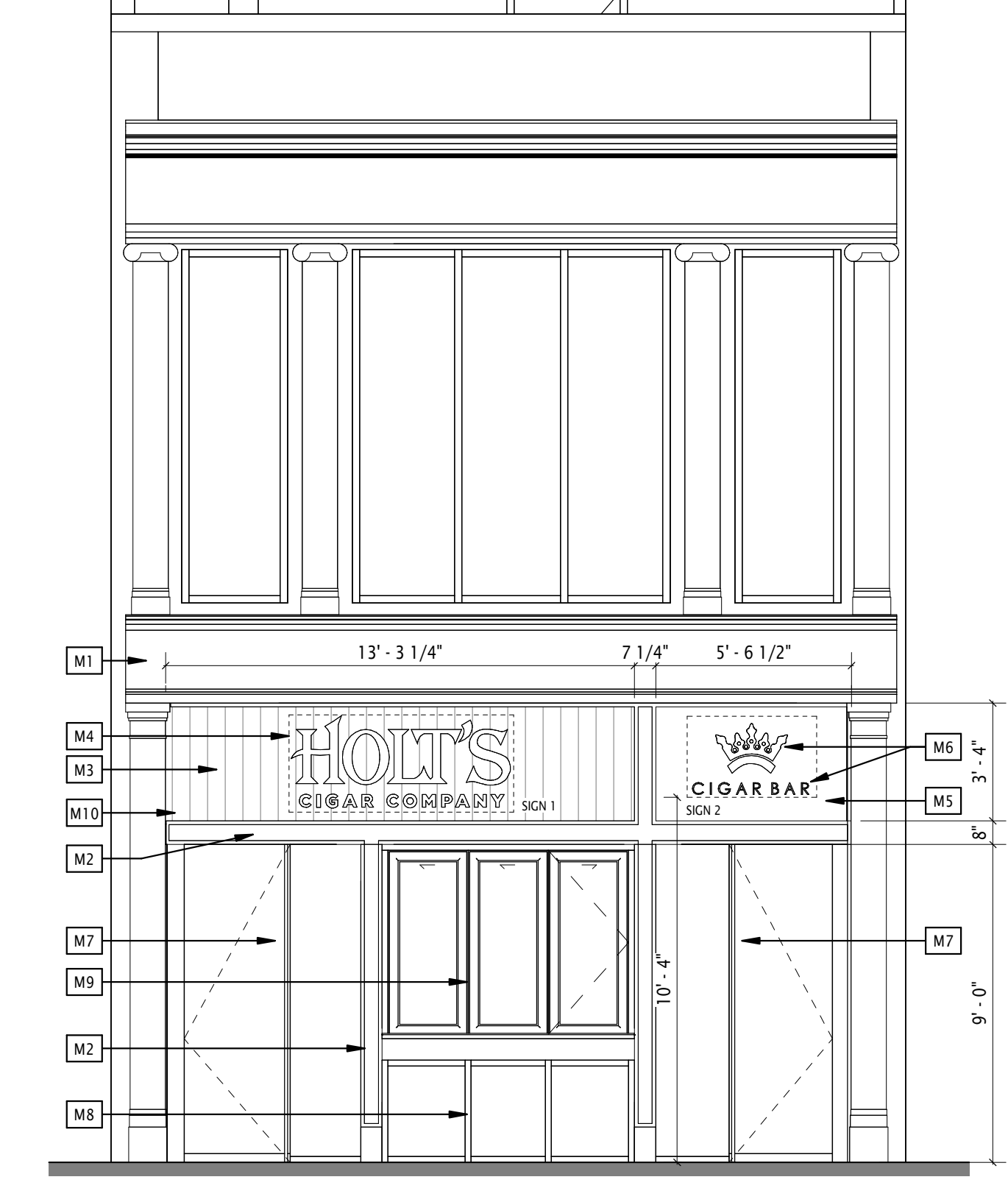
BUILDING ELEVATION NOTES KEY

- M1 EXISTING STUCCO TO REMAIN
- M2 CAST STONE, PAINTED WHITE TO MATCH EXISTING STUCCO
- M3 LONGBOARD, TABLE WALNUT, 6" V-GROOVE
- M4 ILLUMINATED CHANNEL LETTERS
- M5 CALCATTA MARBLE
- M6 HALO LIT CHROME CROWN LOGO WITH BLACK STEEL LETTERING
- M7 NEW FRAMELESS ALL GLASS ENTRY DOOR, BLACK HANDLE & RAILS
- M8 NEW STOREFRONT SYSTEM WITH BLACK FRAMING
- M9 NEW FOLDING WINDOW SYSTEM WITH BLACK FRAMING
- M10 BLACK STEEL LETTERING

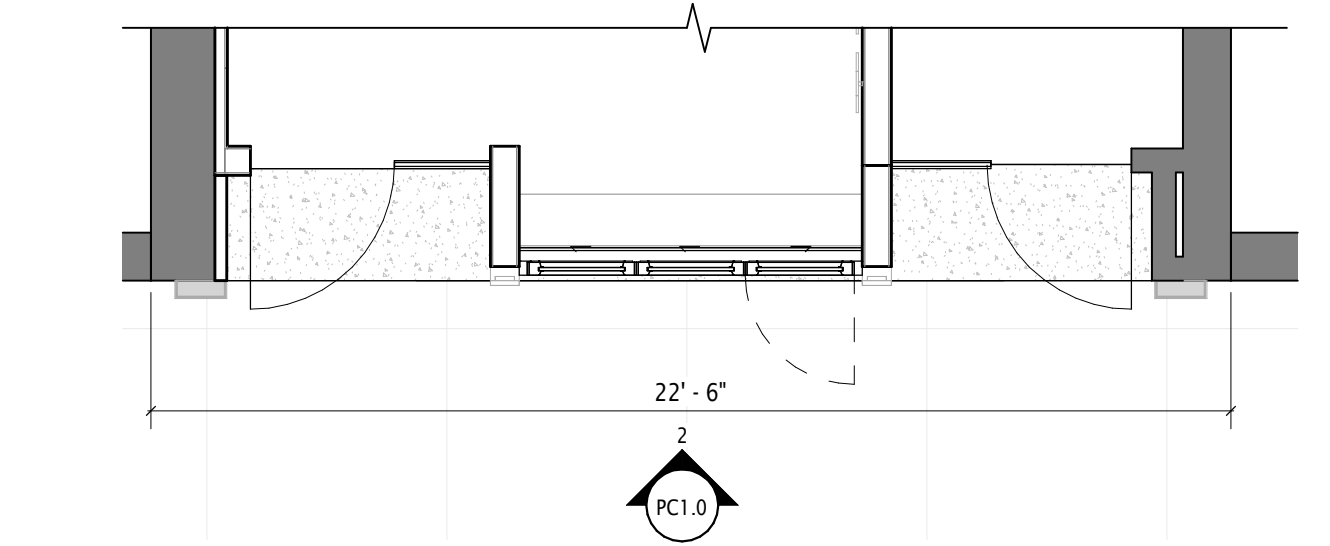
ALLOWABLE SIGNAGE
CMX-5: 25F PER LINEAR FT OF GROUND FLOOR FRONTAGE
ALLOWABLE: 445F
PROPOSED: SIGN 1: 17 SF SIGN 2: 9 SF TOTAL: 26 SF



6 SIGNAGE MOUNTING DETAILS
PCI.0 1" = 1'-0"



2 FRONT ELEVATION
PCI.0 1/4" = 1'-0"



3 OVERALL GROUND FLOOR PLAN
PCI.0 1/4" = 1'-0"

HOLT'S WALNUT STREET

PROJECT DESCRIPTION

1522 WALNUT STREET
PHILADELPHIA, PA 19102

PLANNING & ART
COMMISSION SUBMISSION

DATE: 04.02.2026
DRAWN BY: JR | DV | OF
REVISIONS:



AS INDICATED
COPYRIGHT 2026 JKR PARTNERS, LLC ALL RIGHTS RESERVED
PC1.0
CONSTRUCTION
DOCUMENTS

4/2/2026 10:53:35 AM C:\Users\jkrp\Documents\Holt's Walnut Street\1522 Walnut Street\1522_Schedule.rvt