

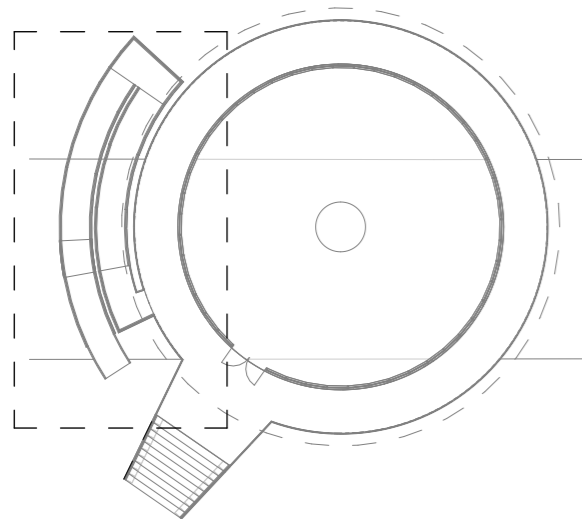


LOVE PARK WELCOME CENTER RAMP ENCLOSURE - PPR

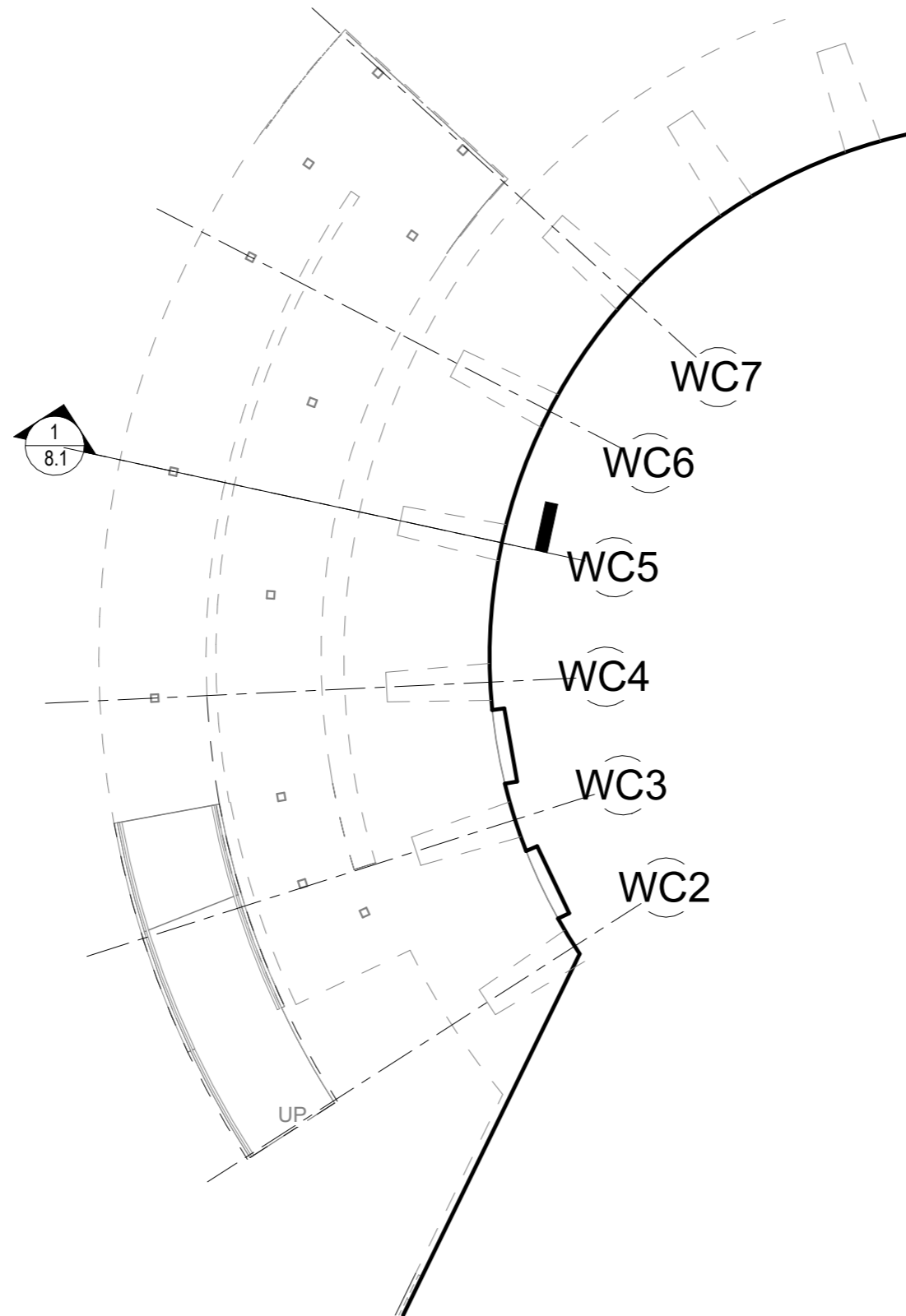
02/12/2026



PROJECT NUMBER 32.59  
© 2025 SMPARCHITECTS

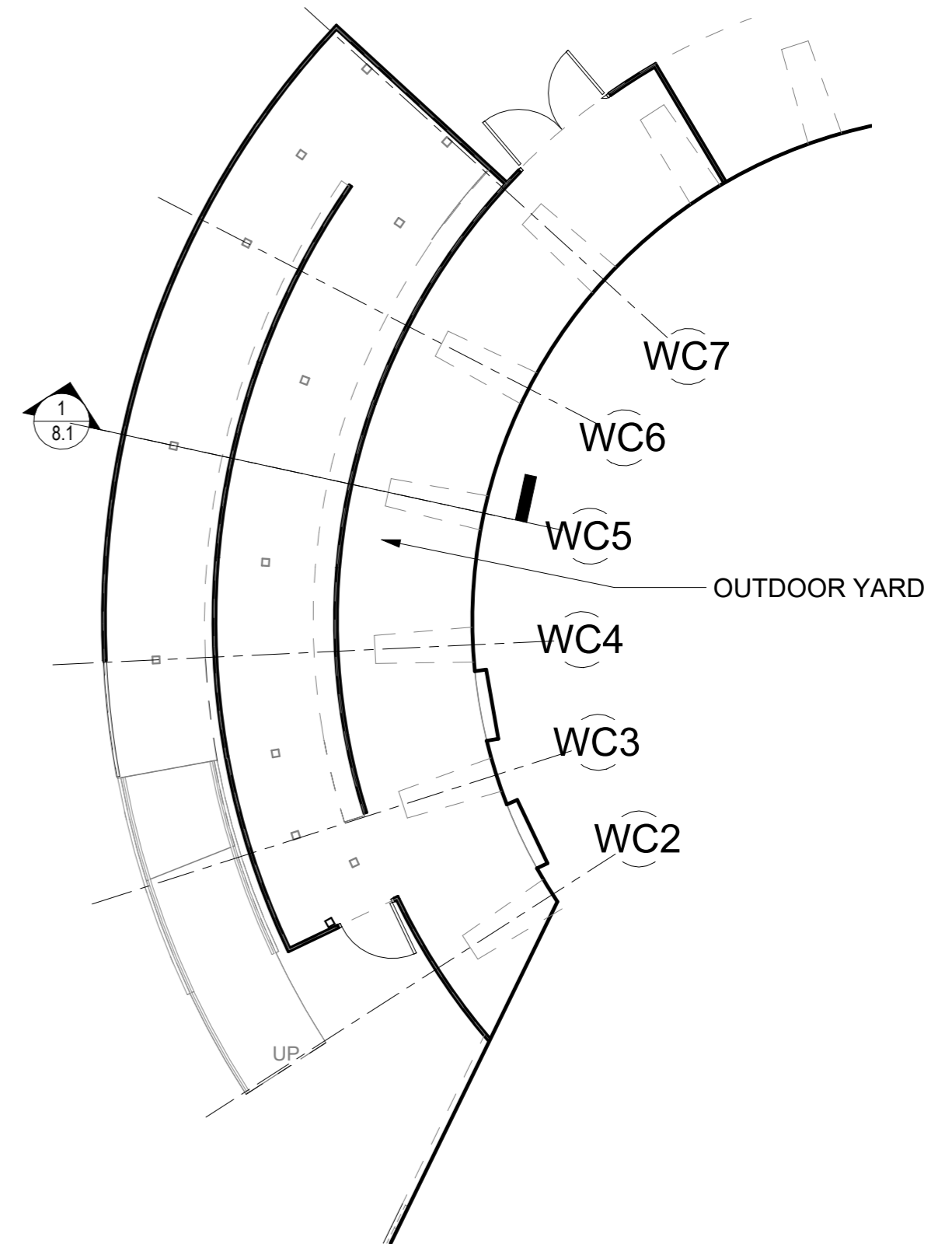


ENLARGED PLAN EXTENT



EXISTING GROUND FLOOR PLAN - ENLARGED

1/8" = 1'-0"



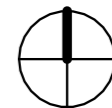
PROPOSED GROUND FLOOR PLAN - ENLARGED

1/8" = 1'-0"

**ENLARGED PLANS**

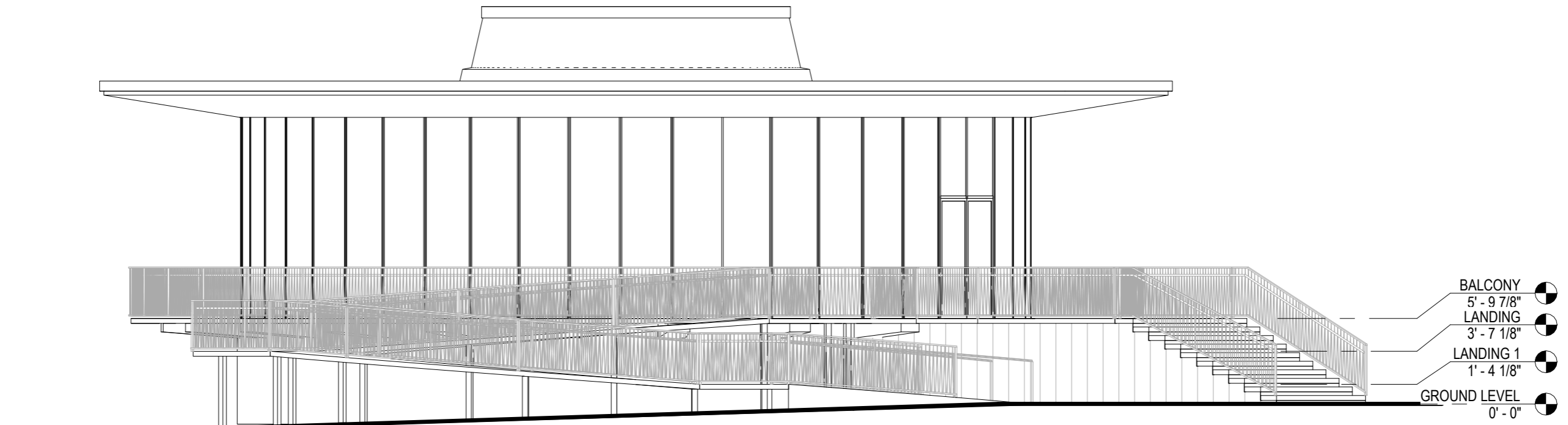
LOVE PARK WELCOME CENTER RAMP ENCLOSURE - PPR

02/12/2026



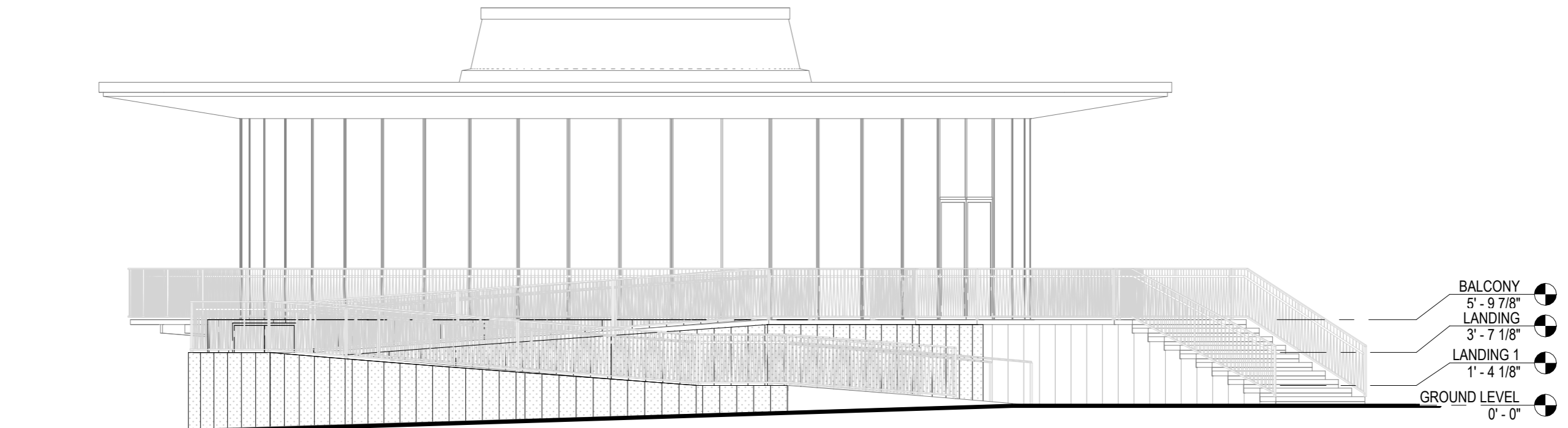
**SMP**  
ARCHITECTS

PROJECT NUMBER 32.59  
© 2025 SMP ARCHITECTS



**EXISTING ELEVATION**

1/8" = 1'-0"



**PROPOSED ELEVATION**

1/8" = 1'-0"

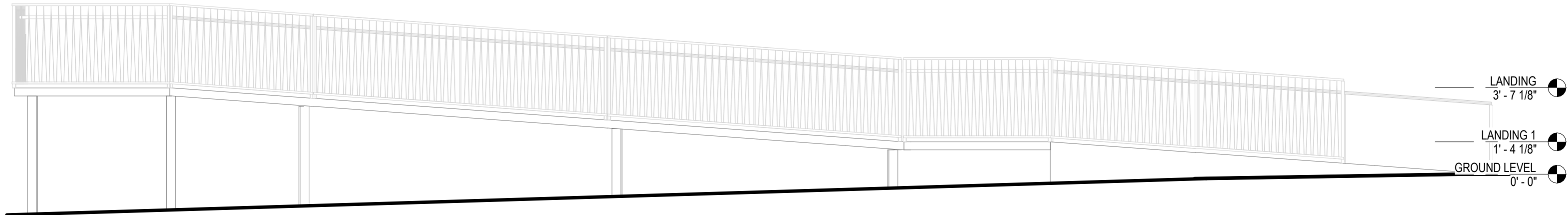
**BUILDING ELEVATIONS**

LOVE PARK WELCOME CENTER RAMP ENCLOSURE - PPR

02/12/2026

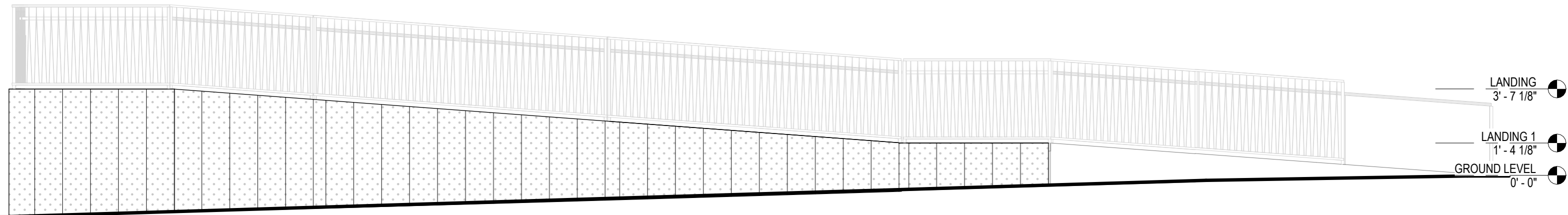
PROJECT NUMBER 32.59  
© 2025 SMP ARCHITECTS





**EXISTING RAMP**

1/4" = 1'-0"



**PROPOSED RAMP**

1/4" = 1'-0"

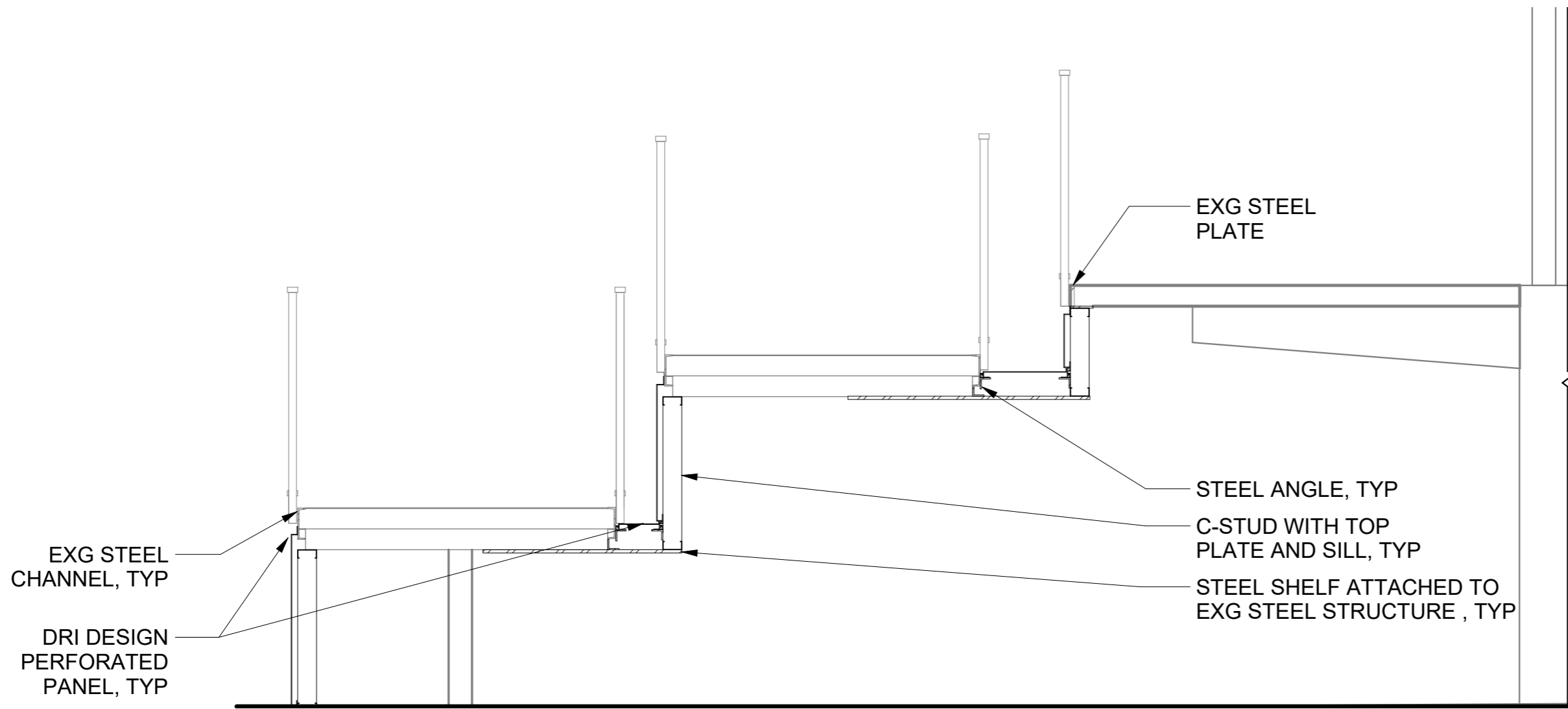
**UNFOLDED RAMP ELEVATIONS**

LOVE PARK WELCOME CENTER RAMP ENCLOSURE - PPR

02/12/2026

PROJECT NUMBER 32.59  
© 2025 SMPARCHITECTS





RAMP AND BALCONY SECTION

1/2" = 1'-0"

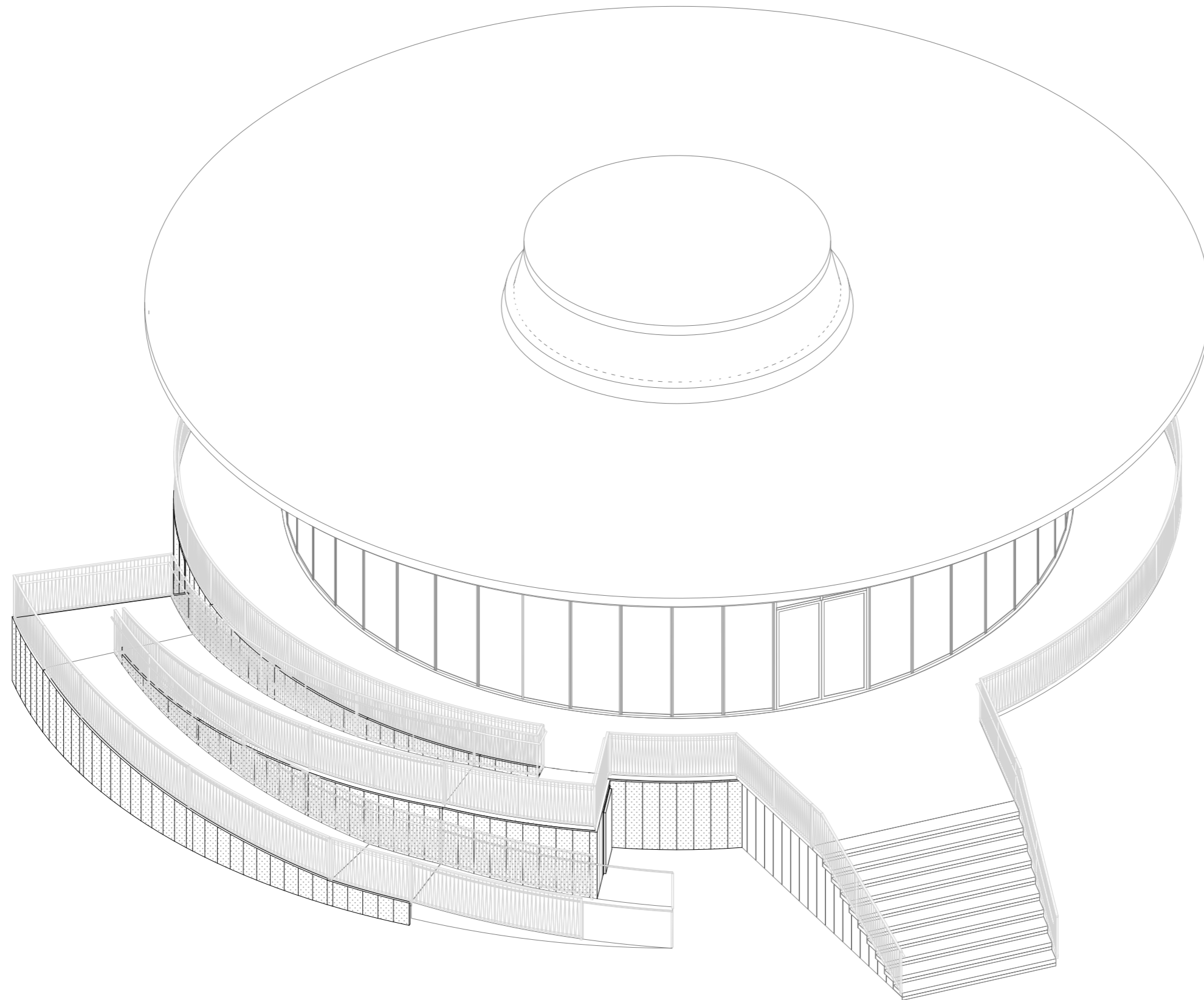
**SECTION**

LOVE PARK WELCOME CENTER RAMP ENCLOSURE - PPR

02/12/2026

PROJECT NUMBER 32.59  
© 2025 SMP ARCHITECTS





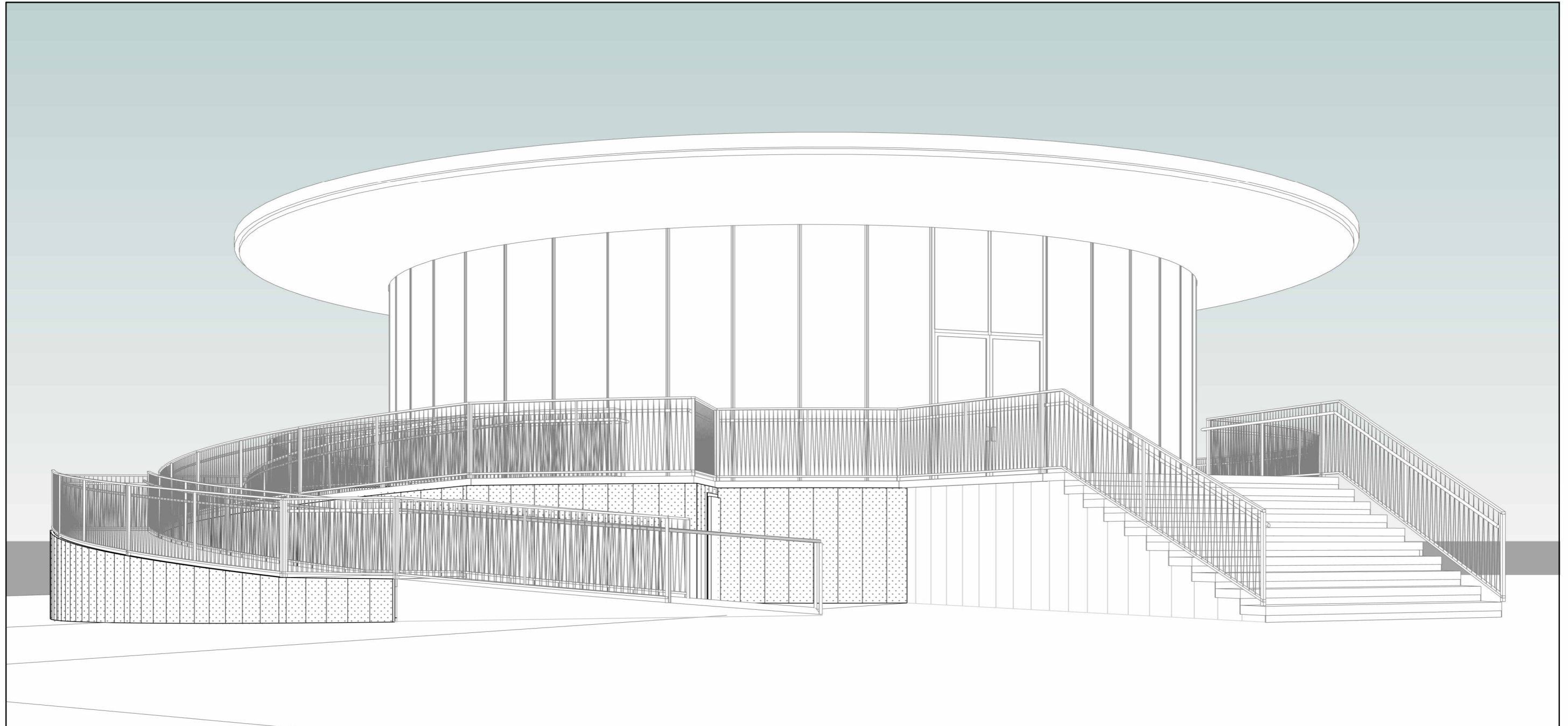
## AXONOMETRIC - PROPOSED

LOVE PARK WELCOME CENTER RAMP ENCLOSURE - PPR

02/12/2026

PROJECT NUMBER: 32.59  
© 2025 SMPARCHITECTS





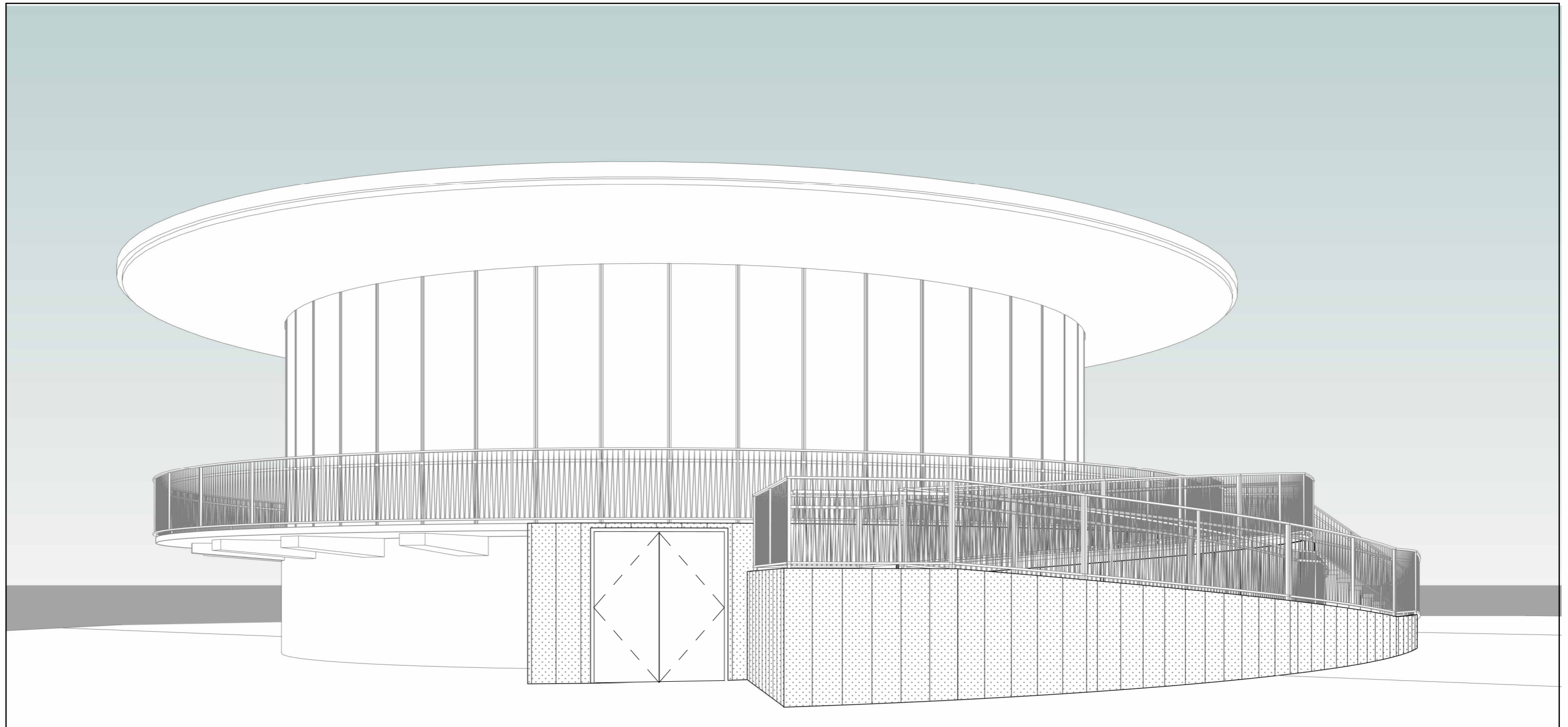
## FRONT PERSPECTIVE - PROPOSED

LOVE PARK WELCOME CENTER RAMP ENCLOSURE - PPR

02/12/2026

PROJECT NUMBER 32.59  
© 2025 SMP ARCHITECTS





## REAR PERSPECTIVE - PROPOSED

LOVE PARK WELCOME CENTER RAMP ENCLOSURE - PPR

02/12/2026

PROJECT NUMBER 32.59  
© 2025 SMP ARCHITECTS

