

Memorandum



To: Katherine Liss, Art Commission
From: Nobuki Iijima, Project Coordinator, Capital Program Office
Date: September 23, 2025
Re: Request for Art Commission for Final Review
Commerce Connector, 4th & Market Streets (File # 168-25)

We are writing to provide a follow-up to the conceptual approval received for the Commerce Connector project at the July Art Commission meeting. Below are the questions raised during the Art Commission Conceptual Review and our responses.

1. **Q:** The existing sculpture that is to be relocated and refurbished as a fountain, who was the artist, has there been official approval to move the sculpture?
A: The new value engineered scope has eliminated the sculpture relocation from the project. The sculpture will stay in its existing location.
2. **Q:** The proposed custom stainless-steel bench will be too hot.
A: The custom bench has been eliminated from the scope. The project will go with a black powder coated bench consisted with PPR standard furnishings.
3. **Q:** What is the plan for Percent for Art?
A: The project is in conversations with Creative Philadelphia and there will be a separate presentation of the proposal later in the process.

With these clarifications, we respectfully request administrative final approval for the site improvements at the Commerce Connector. Since the updates primarily involve eliminating elements rather than modifying the approved design, we hope that a full presentation will not be required. Please inform me if a formal presentation to the Art Commission is necessary for Final Review.

Thank you for your continued guidance and support.

cc: Aparna Palantino, Director, CPO, Pedro Pinto, Deputy Director, CPO
Francesco Cerrai, Project Director, CPO,
Marguerite Anglin, Public Art Director, Creative Philadelphia,
Noni Clements, Asst. Public Art Director, Creative Philadelphia,
Julie Bush, Ground reconsidered, Taylor Parchinski, Ground Reconsidered
Nobuki Iijima, Project Coordinator, CPO nobuki.iijima@phila.gov or (215) 683-4486

COMMERCE CONNECTOR



PHILADELPHIA
PARKS & RECREATION



Ground Reconsidered



Memorandum

To: Katherine Liss, Art Commission
From: Nobuki Iijima, Project Coordinator, Capital Program Office
Date: September 23, 2025
Re: Request for Art Commission for Final Review
Commerce Connector, 4th & Market Streets (File # 168-25)

We are writing to provide a follow-up to the conceptual approval received for the Commerce Connector project at the July Art Commission meeting. Below are the questions raised during the Art Commission Conceptual Review and our responses.

1. **Q:** The existing sculpture that is to be relocated and refurbished as a fountain, who was the artist, has there been official approval to move the sculpture?
A: The new value engineered scope has eliminated the sculpture relocation from the project. The sculpture will stay in its existing location.
2. **Q:** The proposed custom stainless-steel bench will be too hot.
A: The custom bench has been eliminated from the scope. The project will go with a black powder coated bench consisted with PPR standard furnishings.
3. **Q:** What is the plan for Percent for Art?
A: The project is in conversations with Creative Philadelphia and there will be a separate presentation of the proposal later in the process.

With these clarifications, we respectfully request administrative final approval for the site improvements at the Commerce Connector. Since the updates primarily involve eliminating elements rather than modifying the approved design, we hope that a full presentation will not be required. Please inform me if a formal presentation to the Art Commission is necessary for Final Review.

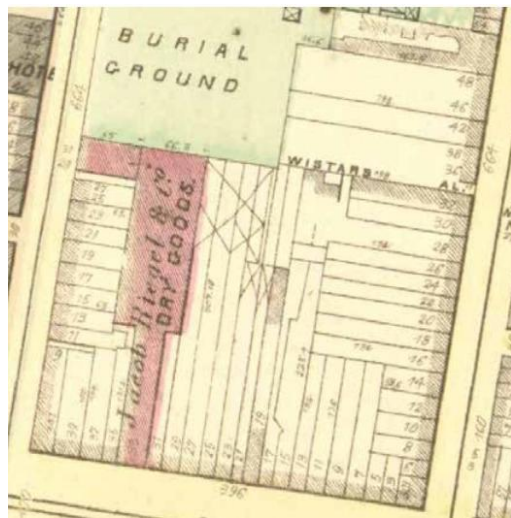
Thank you for your continued guidance and support.

cc: Aparna Palantino, Director, CPO, Pedro Pinto, Deputy Director, CPO
Francesco Cerrai, Project Director, CPO,
Marguerite Anglin, Public Art Director, Creative Philadelphia,
Noni Clements, Asst. Public Art Director, Creative Philadelphia,
Julie Bush, Ground reconsidered, Taylor Parchinski, Ground Reconsidered
Nobuki Iijima, Project Coordinator, CPO nobuki.iijima@phila.gov or (215) 683-4486

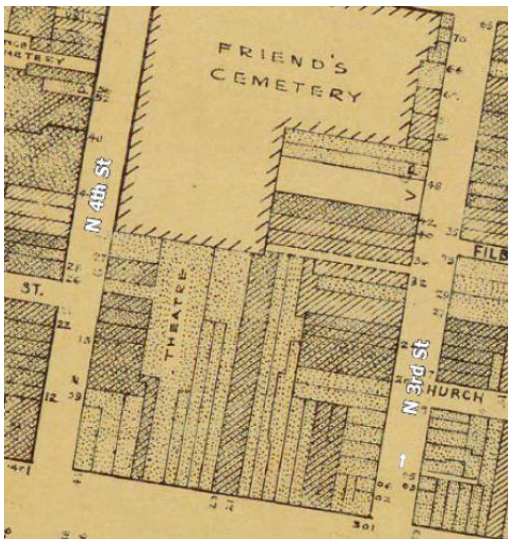


Philadelphia Atlas, 2024

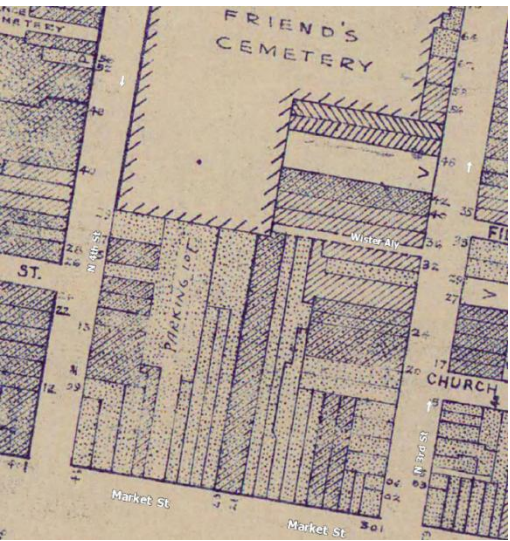




Philadelphia Atlas
1875
333 Market Street -
a dry good store



Philadelphia Atlas
1942
333 Market Street - a theater
that held up to 956 people



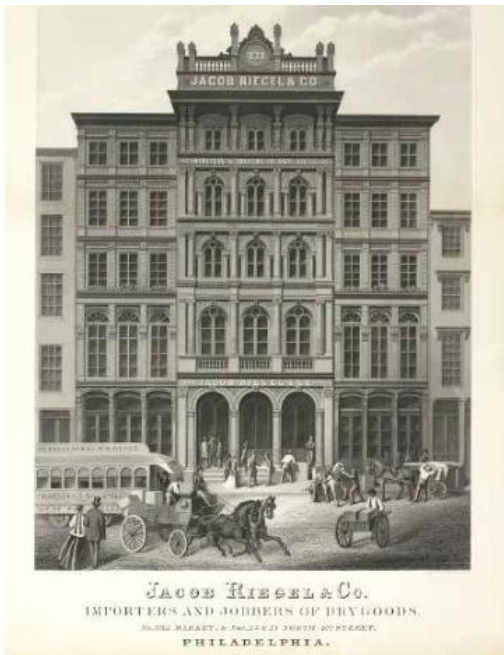
Philadelphia Atlas
1962
333 Market Street –
a parking lot



Philadelphia Atlas
1996



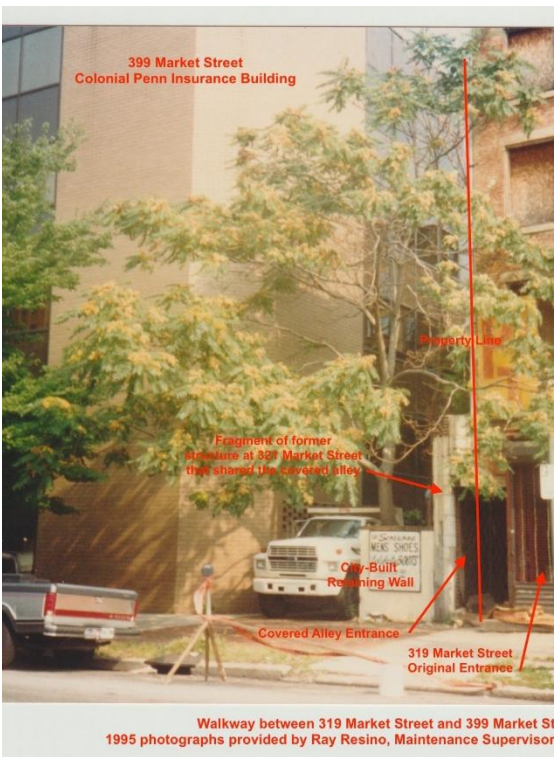
Philadelphia Atlas
2018



Jacob Riegel & Sons Co.
1867
Industrial and commercial buildings line N.4th &
Market Streets. The largest and most notable
building on the block was 333 Market Street



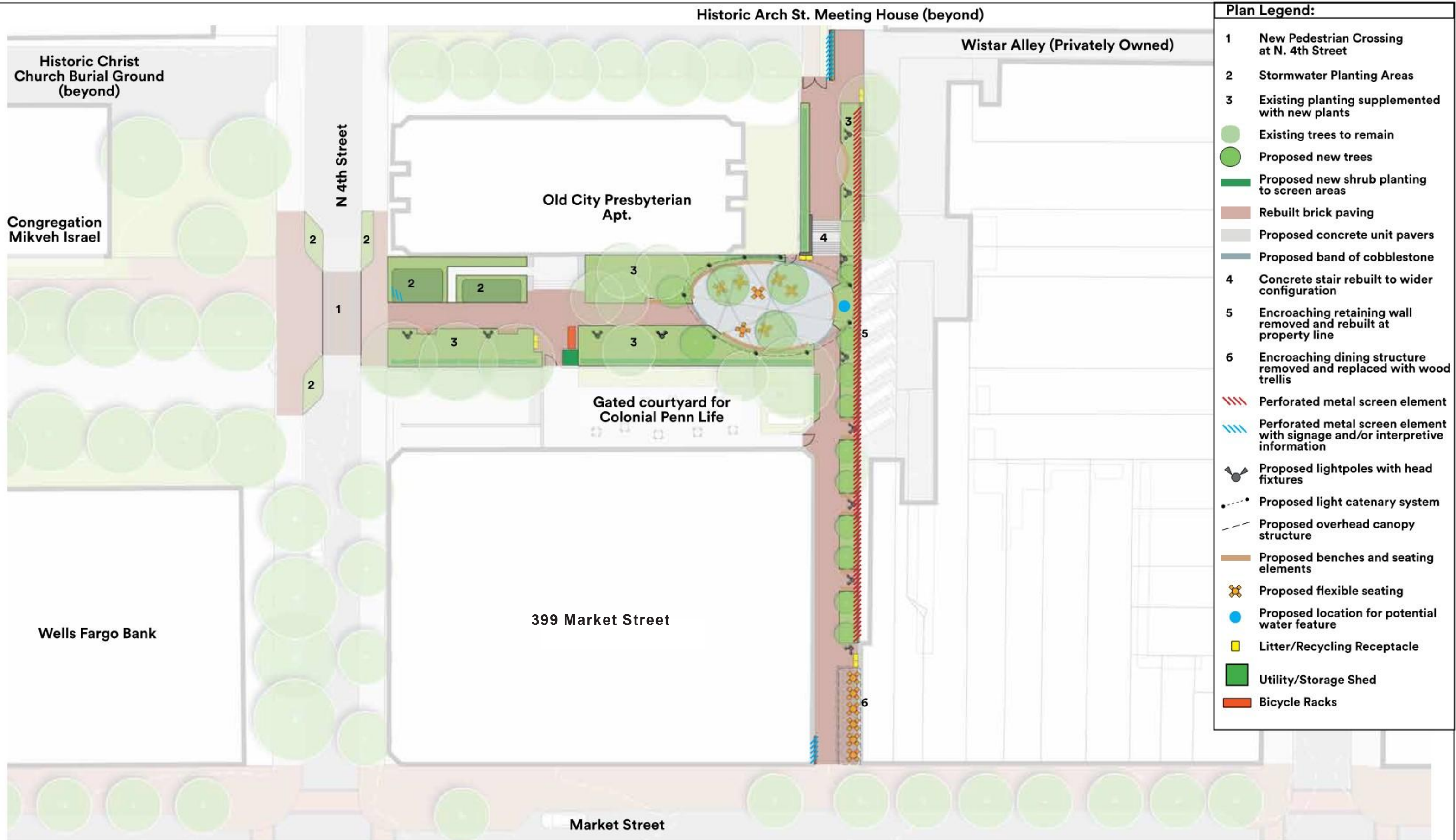
319 Market Street
1967- 1971
Colonial Penn Life building &
Presbyterian Apartments are
constructed



319 Market Street
1995
City retaining wall at Market
Street entrance to Commerce
Connector walk



319 Market Street
2018





1 View from N 4th St. entrance



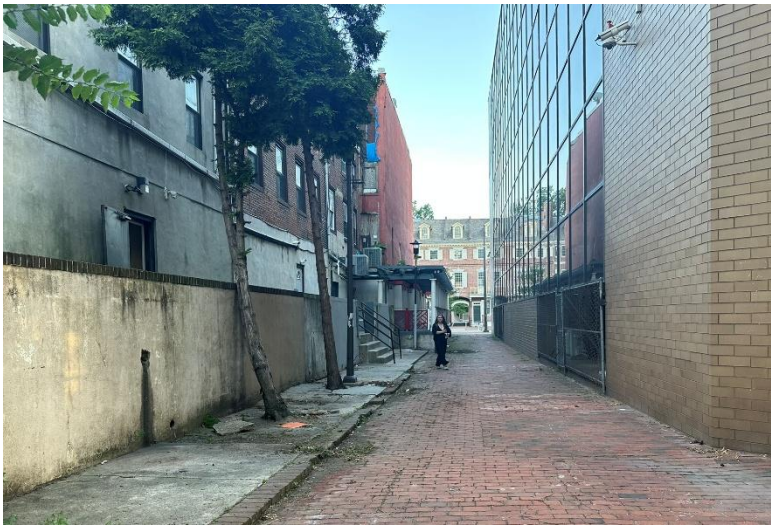
2 Trees and paving in poor condition



3 Site wall at raised site in poor condition



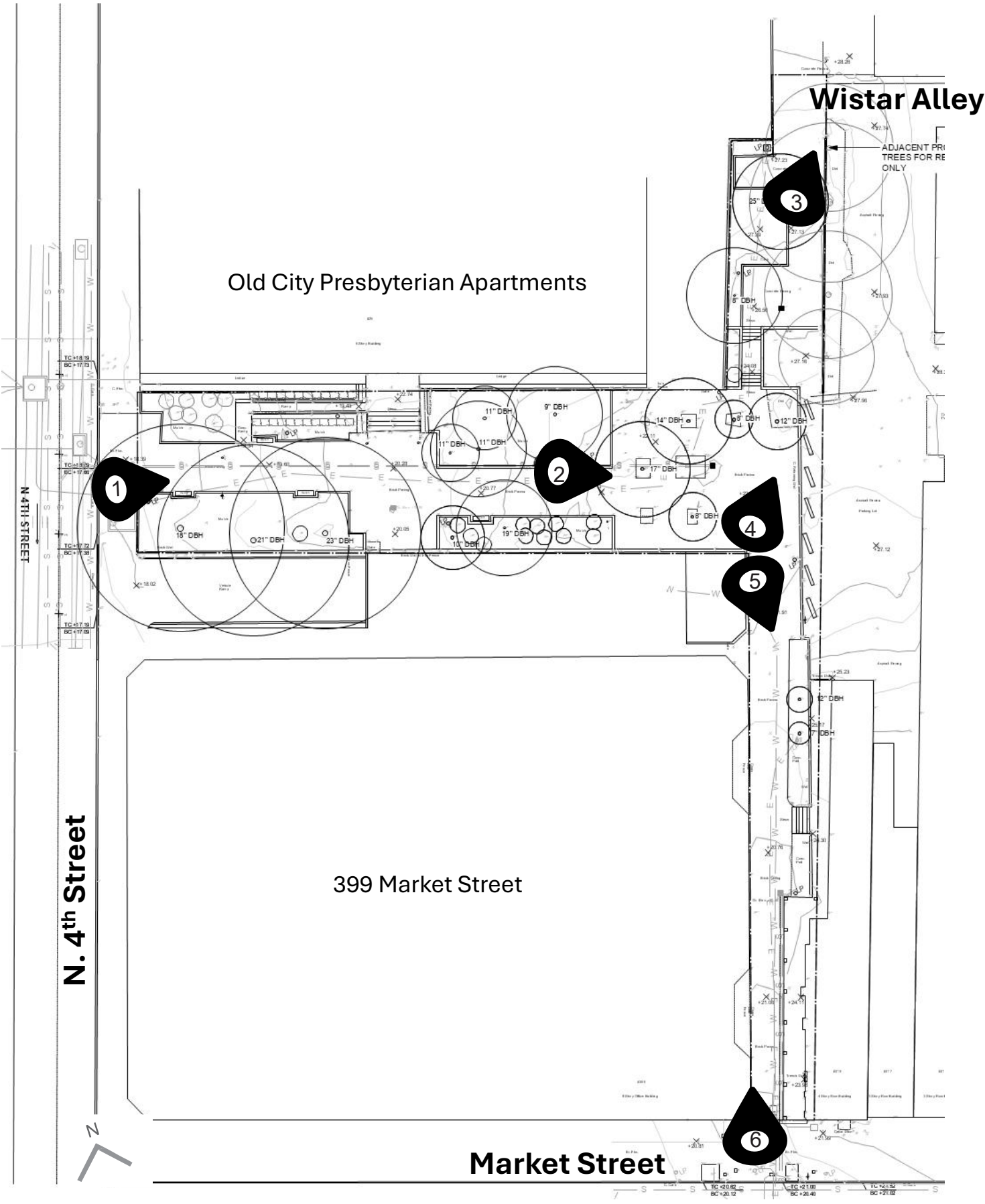
4 Cars parked over edge of site wall

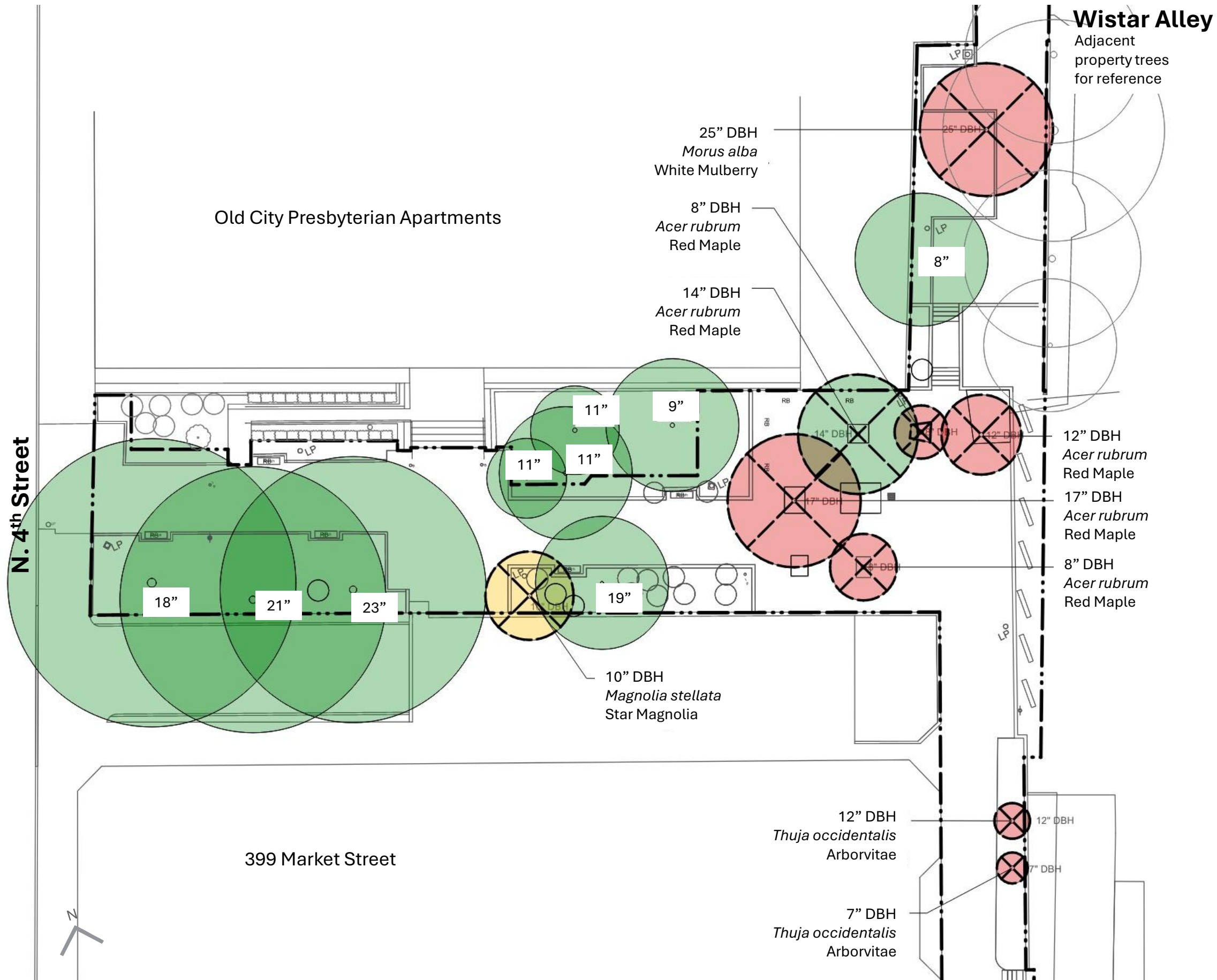


5 Trees and paving in poor condition



6 View from Market St. entrance







Public Stakeholder Meeting



COMMERCE CONNECTOR

COMMUNITY ENGAGEMENT

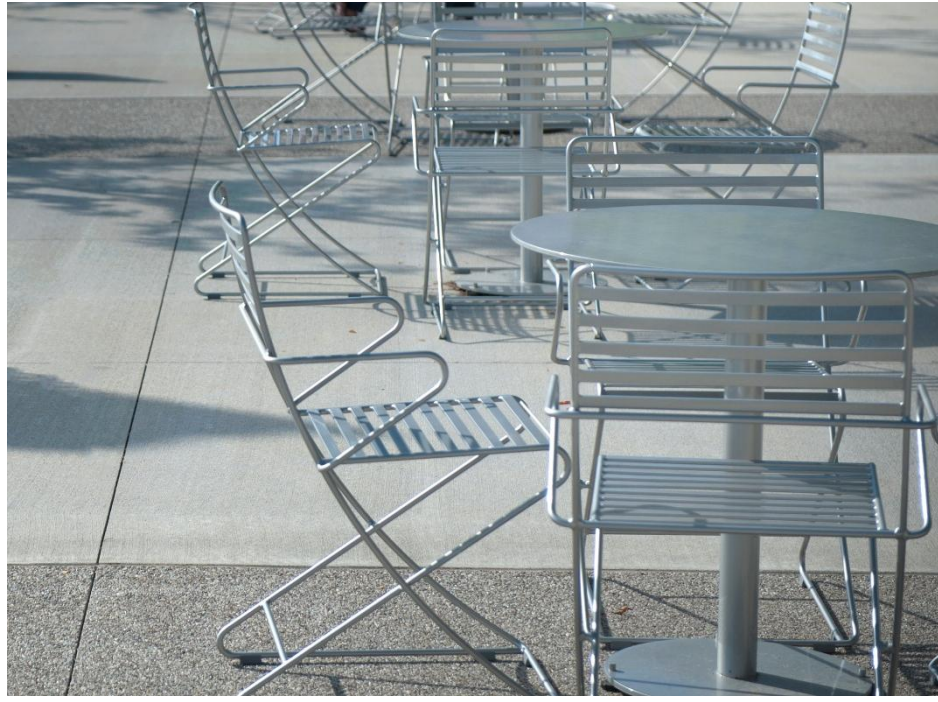


- MATERIALS LEGEND**
- CONCRETE PAVING
 - TINTED CONCRETE PAVING
 - BRICK PAVING
 - STANDARD BENCH
 - BISTRO TABLE AND CHAIRS
 - TRASH RECEPTACLE
 - BICYCLE RACK

- PLANTING LEGEND**
- EXISTING CANOPY TREE
 - PROPOSED CANOPY TREE
 - PROPOSED UNDERSTORY TREE
 - PROPOSED SHRUBS



BRICK PAVING



Tables & Chairs



Metal Benches- straight



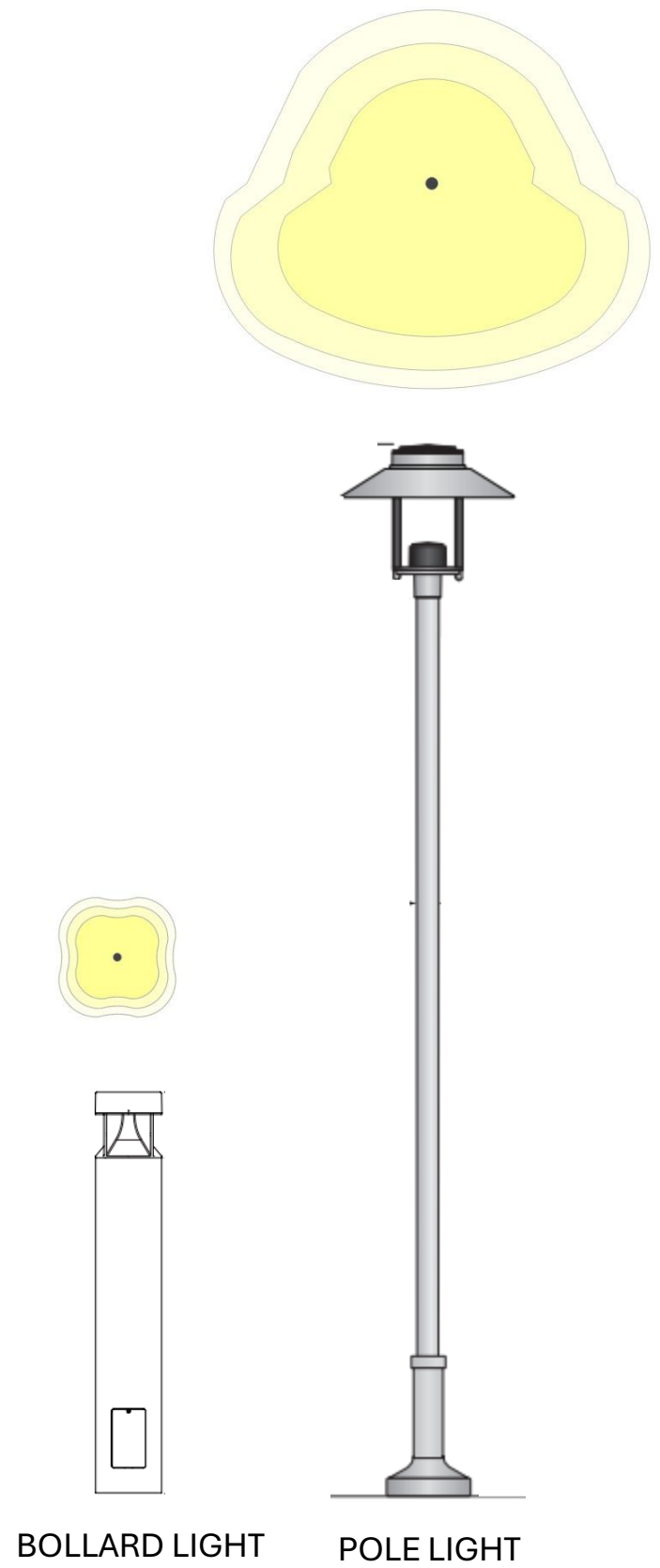
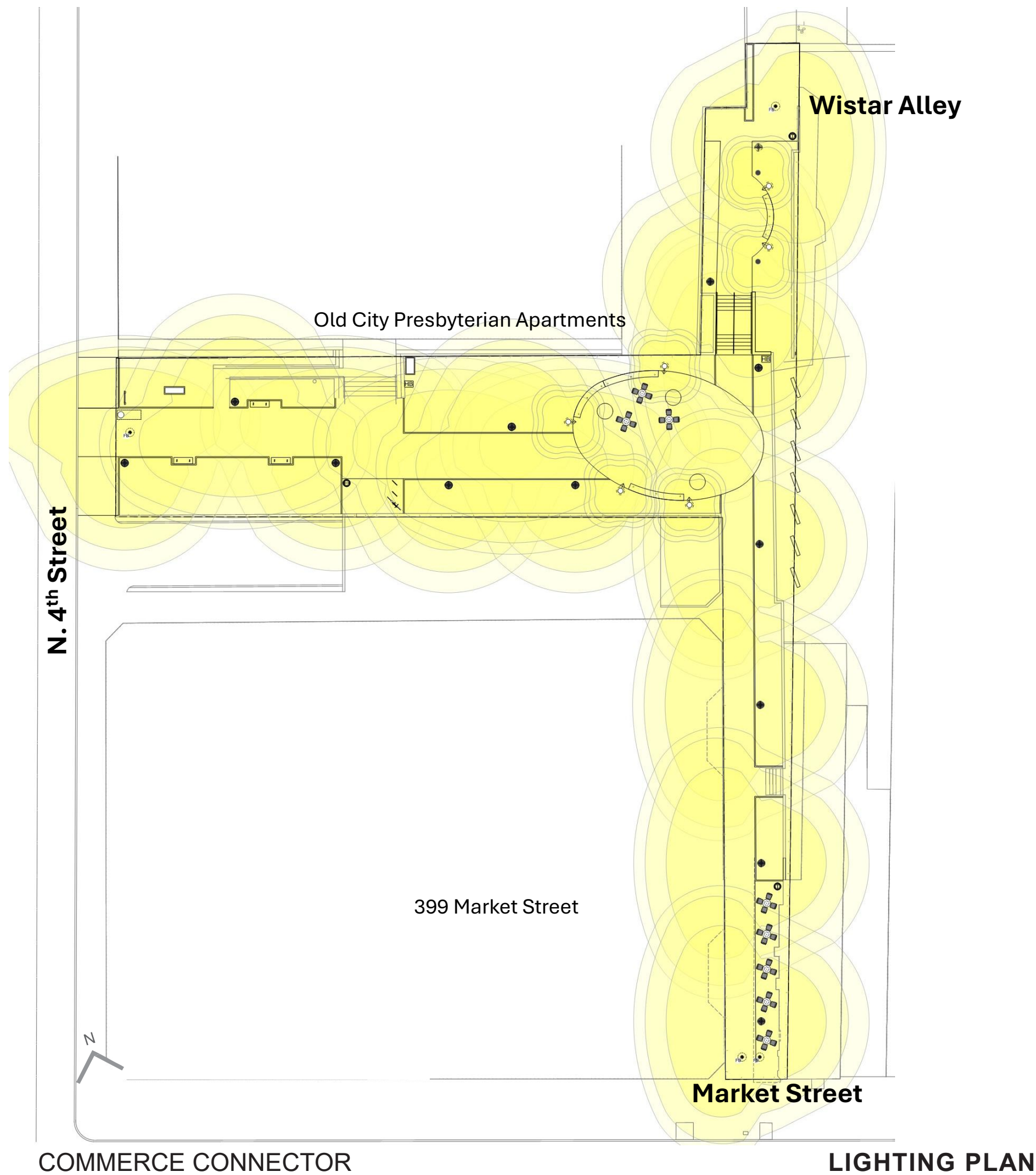
PPR Standard Trash Receptacle

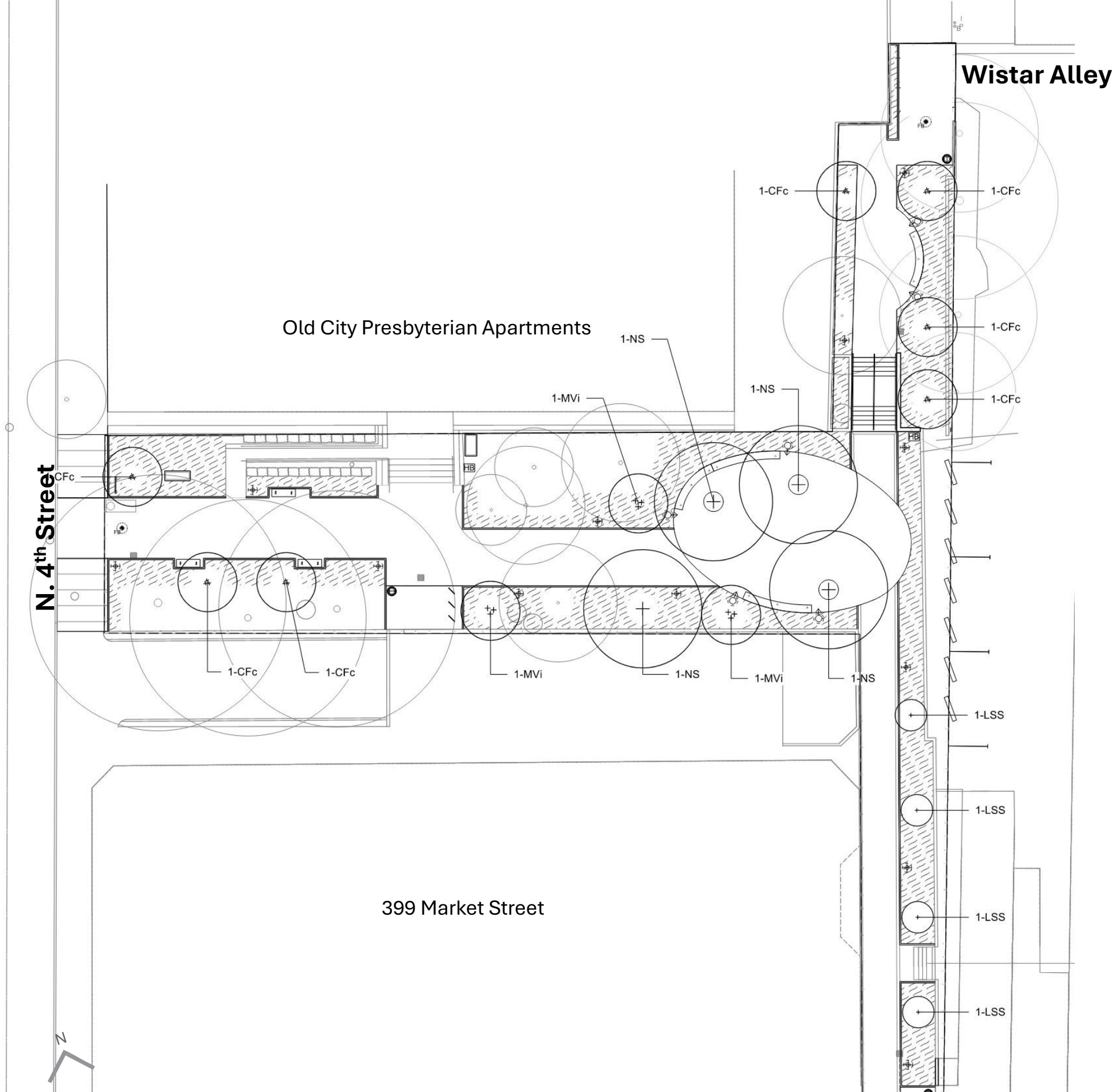


PPR Standard Bicycle Rack



Metal Benches- curved

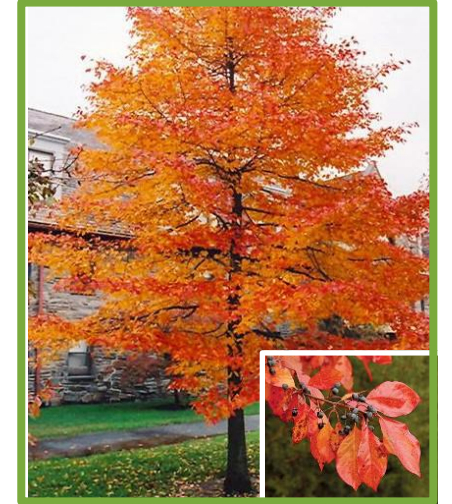




CANOPY TREES



**'Slender Silhouette'
Sweetgum**
Liquidambar styraciflua 'Slender
Silhouette'



Blackgum
Nyssa sylvatica

ORNAMENTAL TREES



**'Cherokee Princess'
Dogwood**
Cornus florida 'Cherokee
Princess'



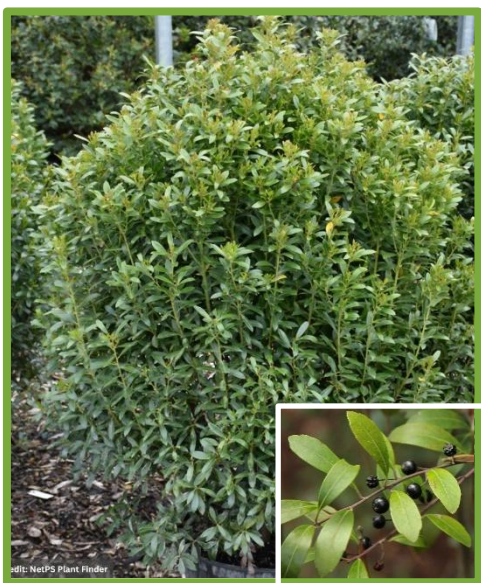
Sweetbay Magnolia
Magnolia virginiana

PLANT SCHEDULE					
ID	Qty	Botanical Name	Common Name	Size	Spacing
CANOPY TREES					
LSS	4	<i>Liquidambar styraciflua</i> 'Slender Silhouette'	Slender Silhouette Sweetgum	3.5" CAL.	As Shown
NS	4	<i>Nyssa sylvatica</i>	Blackgum	3.5" CAL	As Shown
MULTI-STEMMED TREES					
CFc	7	<i>Cornus florida</i> 'Cherokee Princess'	Cherokee Princess Dogwood	3" CAL.	As Shown
MVi	3	<i>Magnolia virginiana</i>	Sweet Bay Magnolia	3" CAL.	As Shown

SHRUBS



Rosebay Rhododendron
Rhododendron maximum



Inkberry Holly
Ilex glabra 'Densa'



Winterberry Holly
Ilex verticillata



Smoothleaf Hydrangea
Hydrangea arborescens

PERENNIALS & GROUNDCOVERS



American Royal Fern
Osmunda regalis var. spectabilis



Marginal Wood Fern
Dryopteris marginalis



Foamflower
Tiarella cordifolia



Dense Blazing Star
Liatris spicata



Wild Stonecrop
Sedum ternatum



Creeping Lilyturf
Liriope spicata



COMMERCE CONNECTOR

MARKET STREET ENTRANCE

COMMERCE CONNECTOR



PHILADELPHIA
PARKS & RECREATION



Ground Reconsidered