

August 29, 2025
Sign & Streetery Committee
1515 Arch Street, 13th Floor
Philadelphia, PA 19102



RE: Mann Center for the Performing Arts - Entry Plaza and Welcome Center Project

Dear Members of the Philadelphia Sign & Streetery Committee:

The Mann Center for the Performing Arts (The Mann Center) respectfully requests to be added to the agenda for the Philadelphia Streets and Signage Committee meeting scheduled for September 17, 2025. In April 2025, we presented and received approval on the Centennial Wall East digital display, a part of our Entry Plaza reimagination project, and noted we would present the larger signage package for this project in the future once the design was ready. We are now seeking the Committee's approval of this signage package for our Entry Plaza Expansion and Welcome Center Project.

The Mann Center, a not-for-profit outdoor performance center located in Philadelphia's Fairmount Park, has been serving the community since 1976. As part of our commitment to enhancing the visitor experience and accommodating our growing audience of over 200,000 patrons annually, The Mann Center is committed to significant improvements to our entry plaza and the addition of a new welcome center. Partial construction activities have begun, with the bulk of construction activities commencing at the close of the season in October 2025. The project has a targeted completion by the opening of the 2026 season, which coincides with both the 50th anniversary of the Mann Center and the 250th anniversary of the United States of America.

The design team at Merje has developed plans in alignment with our Master Plan, specifically the Entry Plaza Expansion and Welcome Center Project which was unanimously approved by the Art Commission in March 2025. We look forward to presenting the detailed designs and answering any questions during the September 17th meeting.

Thank you for your consideration of this request. Please confirm our placement on the agenda at your earliest convenience. Should you have any questions prior to the meeting on the 17th, please reach out to our partners at Aegis.

Sincerely,

A handwritten signature in black ink, appearing to read "Catherine M. Cahill".

Catherine M. Cahill
President & CEO

Executive Office:
123 S. Broad Street
Suite 815
Philadelphia, PA 19109

The Mann Center for the Performing Arts
Telephone: (215) 546-7900
Fax: (215) 546-9524
www.MannCenter.org

Theater:
5201 Parkside Avenue
Fairmount Park
Philadelphia, PA 19131

THE MANN CENTER

Wayfinding & Signage Program
Plaza and Welcome Center

ART COMMISSION

SIGN AND STREETERY REVIEW

September 17, 2025

merJe

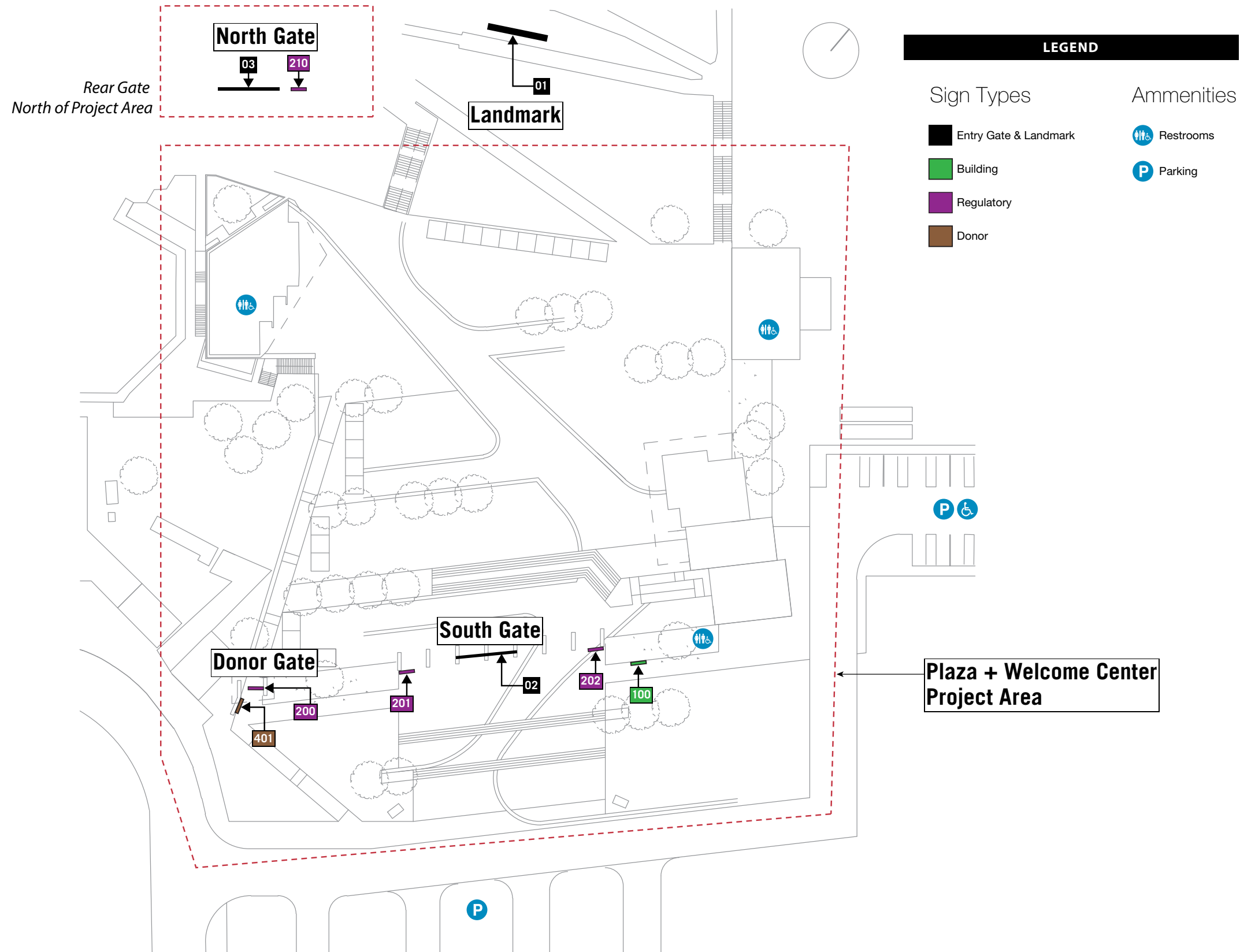
MERJE | ENVIRONMENTS & EXPERIENCES
5 W. Gay St.
West Chester, PA 19380
T 484.266.0648
www.merjedesign.com

Table of Contents

Project Name	
A.	Project Boundary
	Sign Location Plan A1
B.	Design Drawings
	South Gate B1
	North Gate B4
	Donor Gate B6
	Welcome Center - Tickets..... B9
	Interior Campus Signs..... B11
	Landmark..... B12

SECTION A

Sign Location Plan



REVISIONS		
DATE	BY	DESCRIPTION

ENVIRONMENTS & EXPERIENCES

merJe

5 W. Gay St.
West Chester, PA 19380
T 484.266.0648
www.merjdesign.com

SHEET TITLE

Sign Location Plan
Project Boundary

CLIENT / PROJECT

The Mann Center
Wayfinding and Signage System
Plaza and Welcome Center

DATE: September 17, 2025

DRAWN BY: GS

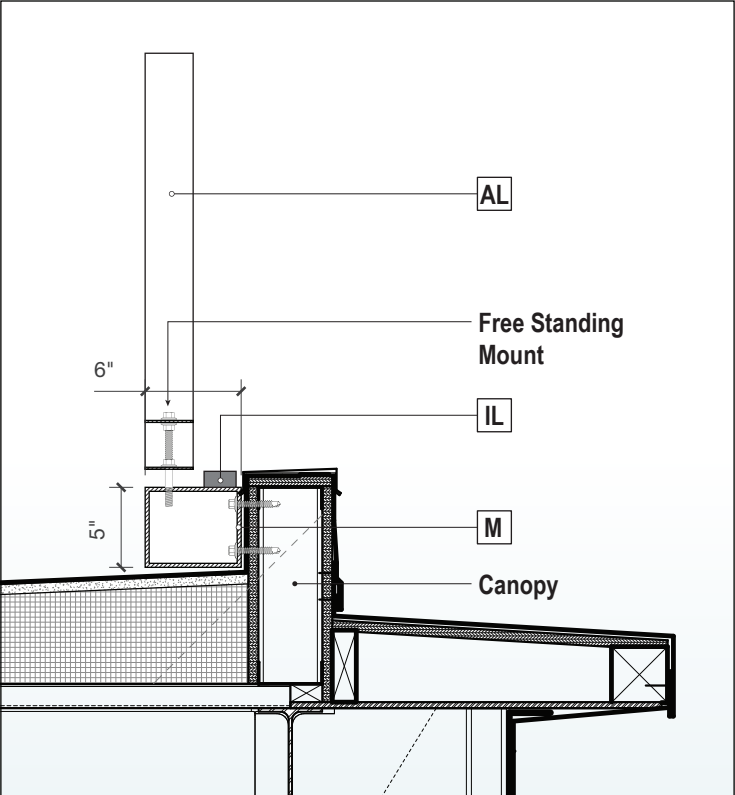
SHEET NO.

A.1

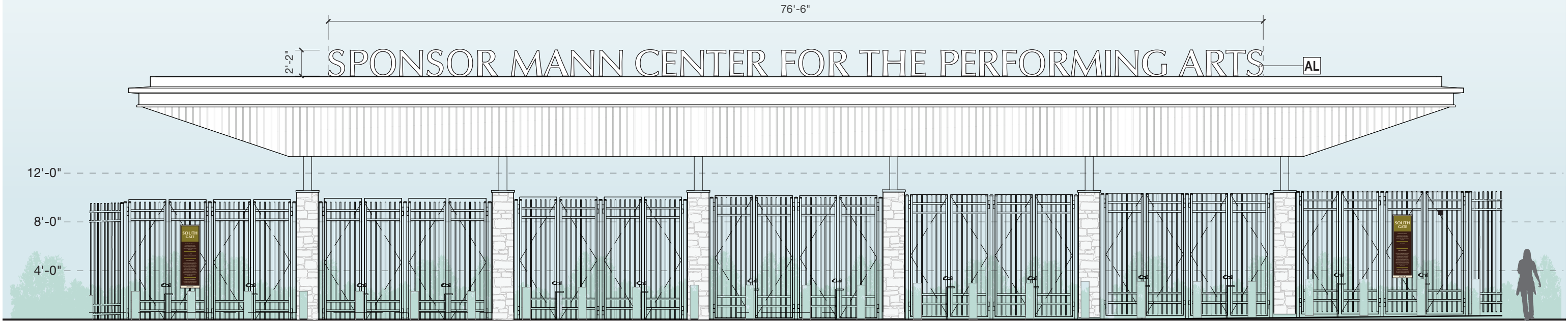
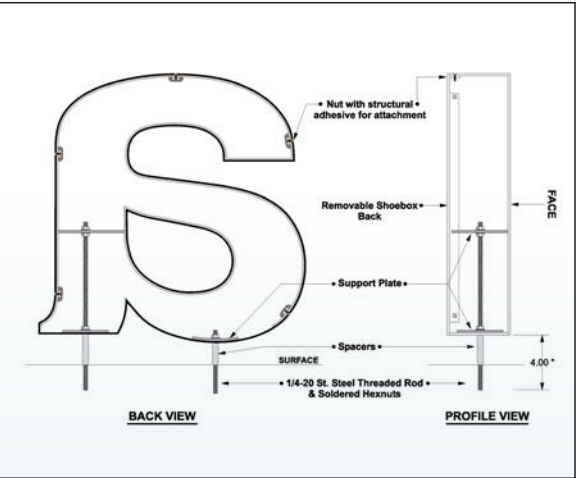
SECTION B

Design Drawings

LOCATIONS 02/201/202 | South Gate



Specifications	
M	Mounting Raceway (Behind Canopy)
AL	Fabricated Aluminum Letters
IL	Illumination: z



Scale: 1/8"=1'-0" Location 02 Front Elevation

REVISIONS		
DATE	BY	DESCRIPTION

ENVIRONMENTS & EXPERIENCES

merJe

5 W. Gay St.
West Chester, PA 19380
T 484.266.0648
www.merjedesign.com

SHEET TITLE
South Gate - Canopy Letters Location 02/201/202

CLIENT / PROJECT
The Mann Center Wayfinding and Signage System Plaza and Welcome Center

DATE: September 17, 2025
DRAWN BY: GS
SHEET NO. B.1

SPONSOR MANN CENTER FOR THE PERFORMING ARTS



SPONSOR MANN CENTER FOR THE PERFORMING ARTS



REVISIONS		
DATE	BY	DESCRIPTION

ENVIRONMENTS & EXPERIENCES

merJe

5 W. Gay St.
West Chester, PA 19380
T 484.266.0648
www.merjedesign.com

SHEET TITLE

South Gate - Canopy Letters
Location 02/201/202

CLIENT / PROJECT

The Mann Center
Wayfinding and Signage System
Plaza and Welcome Center

DATE: September 17, 2025

DRAWN BY: GS

SHEET NO. B.2



SHOWCASE LINEAR WHITE

Exterior LED liner

SHOWCASE
SERIES

Features

- Slim size – easy fit in different architectural structures
- Dedicated optic design – even washing effect
- On/Off control
- Easy installation and maintenance – auto-addressing and reliable connection by self-locking water-proof connectors

Optical Specifications

Luminous fluxShort.....900 lm
Long.....2880 lm
Efficacy80 lm/W
CCT4000 K
CRI80
Beam angle15° x 55°

Electrical/Mechanical Specifications

Input voltage24 VDC
Power consumptionShort.....12 W
Long.....36 W
Dimensions L x W x HShort.....11.81" x 1.61" x 1.14"
(Excluding mounting bracket) Long.....39.37" x 1.61" x 1.14"
WeightShort.....1.76 lbs.
Long.....4.41 lbs.
Cover lensesSemi-tempered glass cover
HousingAluminum

System Specifications

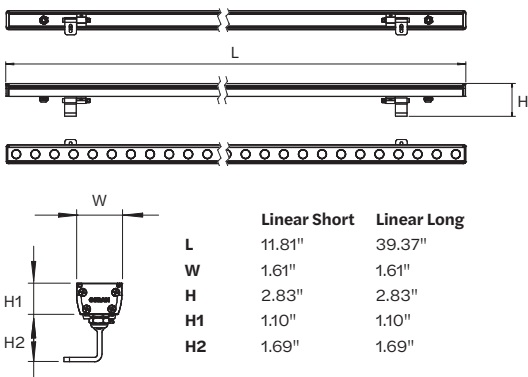
ControlOn/Off
Max. interconnectionShort.....8 units
Long.....2 units
Adjustment options.....±90° tilt
Operating temperature-4° F - 122° F
Storage temperature.....-40° F - 176° F
EnvironmentOutdoor (IP66)
Lumen maintenanceL₇₀ @ 25° C - 50,000 hours
Safety approvalElectrical Protection Class III, CE, CB, UL
Warranty3-year parts only



Specifications subject to change without notice.



Dimensions



Product Options

Showcase Linear White Fixtures	Part number
Showcase Linear 12 W On/Off 15 x 55 4000 K Short	P-LN1555-12W-40
Showcase Linear 36 W On/Off 15 x 55 4000 K Long	P-LN1555-36W-40

Showcase Linear White Cables	Part number
Showcase Linear White 2-pin DC Power Starter Cable 6-ft	P-LN-2SC-2000
Showcase Linear White 2-pin DC Interconnection CAB 3-ft	P-LN-2IC-CAB-1000
Showcase Linear White 2/3-pin Connector Socket End Cap	P-LN-3PC-EC



REVISIONS		
DATE	BY	DESCRIPTION

ENVIRONMENTS & EXPERIENCES



5 W. Gay St.
West Chester, PA 19380
T 484.266.0648
www.merjedesign.com

SHEET TITLE

South Gate - Canopy Letters
Location 02/201/202

CLIENT / PROJECT

The Mann Center
Wayfinding and Signage System
Plaza and Welcome Center

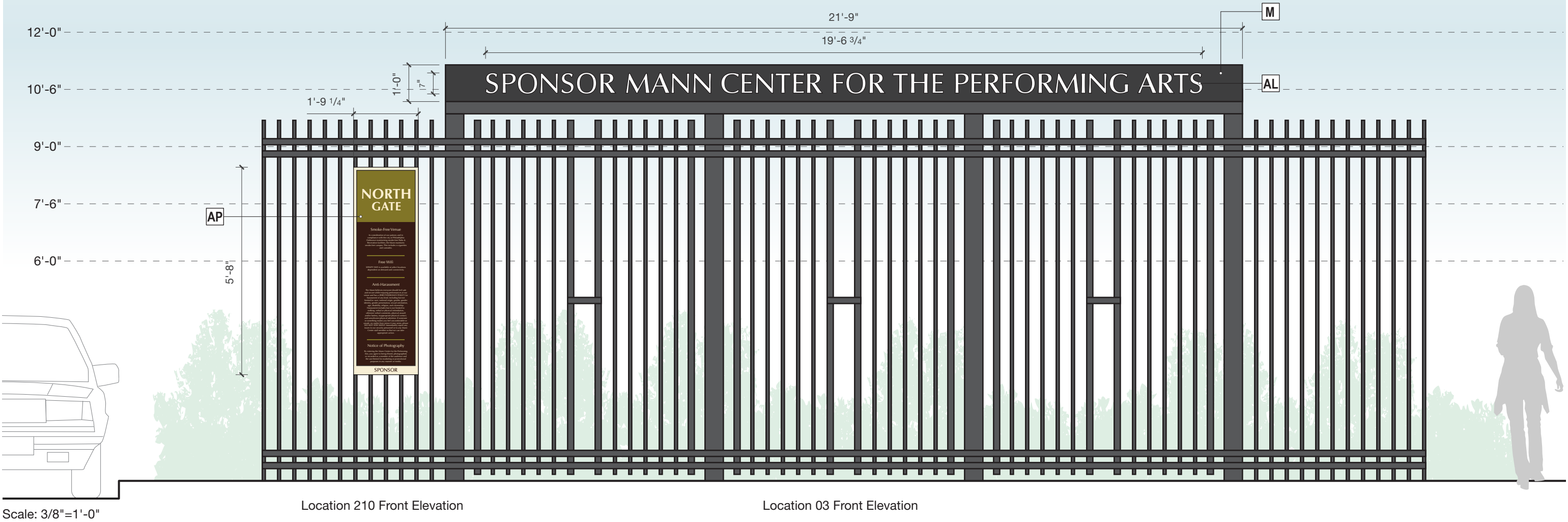
DATE:	September 17, 2025
DRAWN BY:	GS
SHEET NO.	B.3

LOCATIONS 03/210

North Gate



Specifications	
M	Mounting Raceway
AL	Solid Cut Alum. Letters - 1/2" Thick-White
AP	.040 Aluminum Panel with Digital Graphics



REVISIONS		
DATE	BY	DESCRIPTION

ENVIRONMENTS & EXPERIENCES

merJe

5 W. Gay St.
West Chester, PA 19380
T 484.266.0648
www.merjedesign.com

SHEET TITLE
North Gate - Letters Location 03/210

CLIENT / PROJECT
The Mann Center Wayfinding and Signage System Plaza and Welcome Center

DATE: September 17, 2025
DRAWN BY: GS
SHEET NO. B.4



REVISIONS		
DATE	BY	DESCRIPTION

ENVIRONMENTS & EXPERIENCES

merJe

5 W. Gay St.
West Chester, PA 19380
T 484.266.0648
www.merjedesign.com

SHEET TITLE

North Gate - Letters
Location 03/210
Existing Conditions

CLIENT / PROJECT

The Mann Center
Wayfinding and Signage System
Plaza and Welcome Center

DATE: September 17, 2025

DRAWN BY: GS

SHEET NO.

B.5

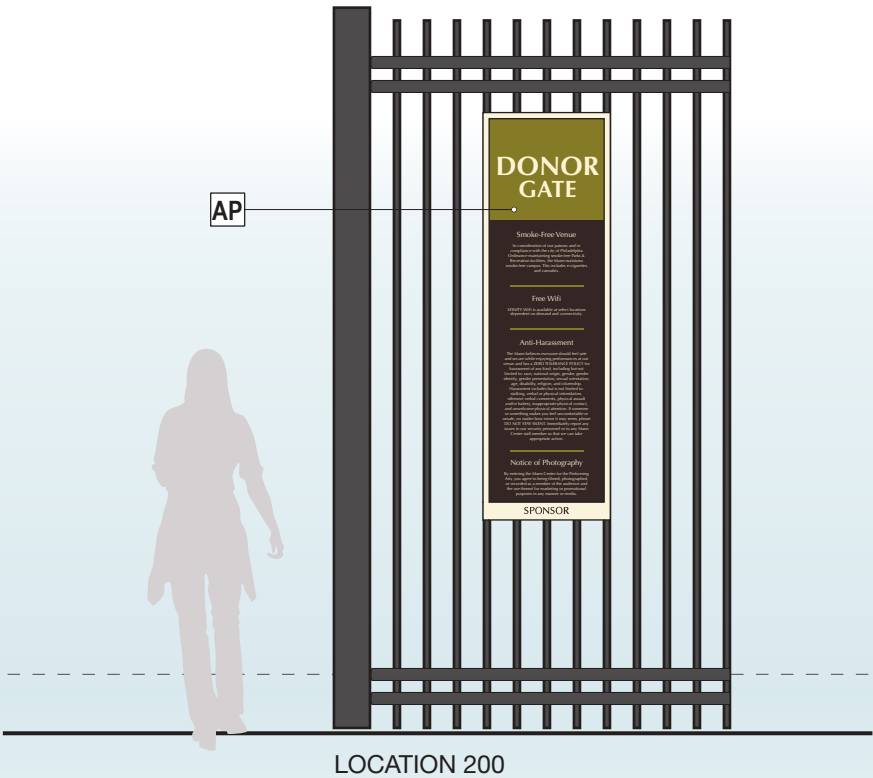
LOCATIONS 401/200 | Donor Gate



Halo-Lighting Rendering

12'-0"

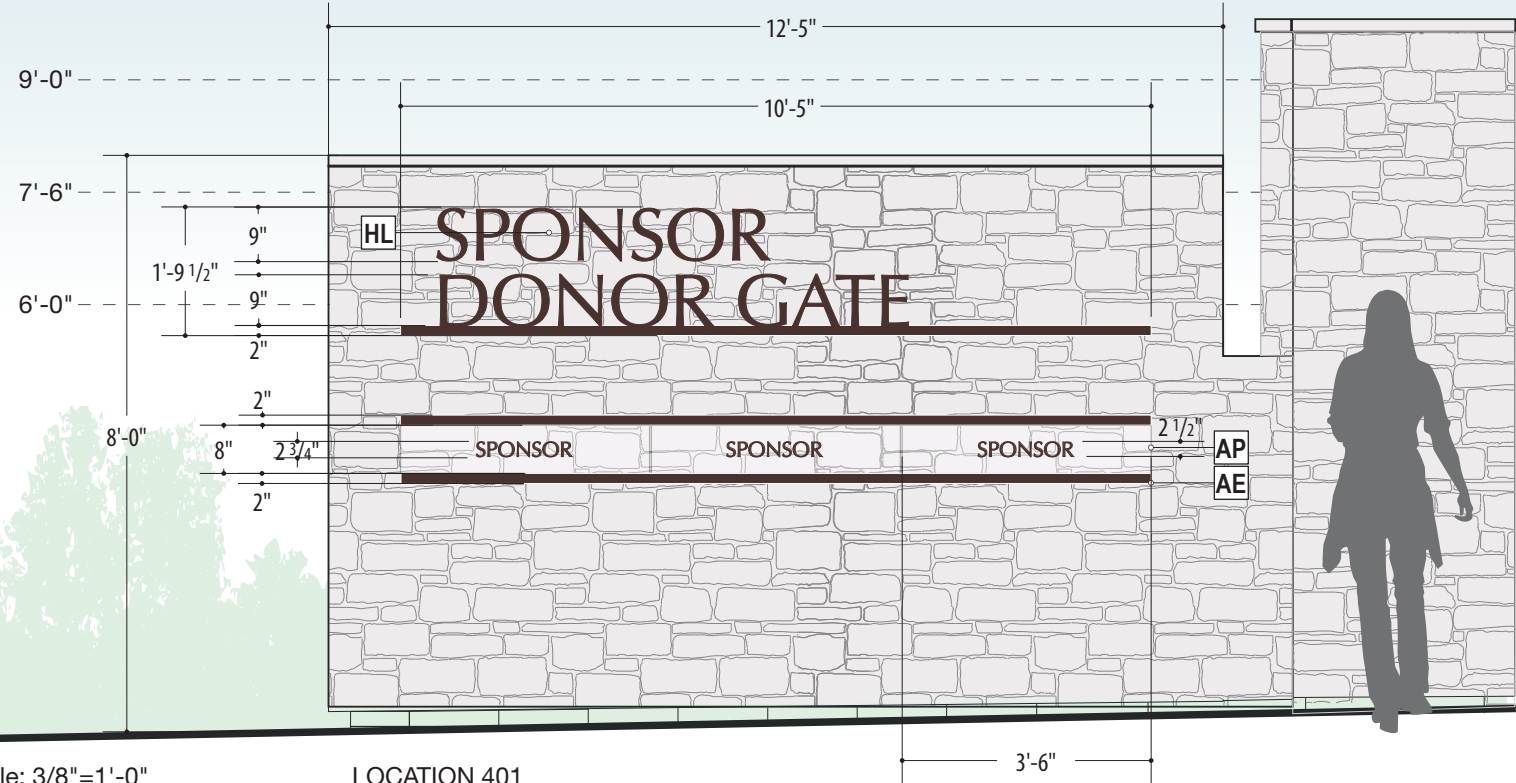
10'-6"



LOCATION 200

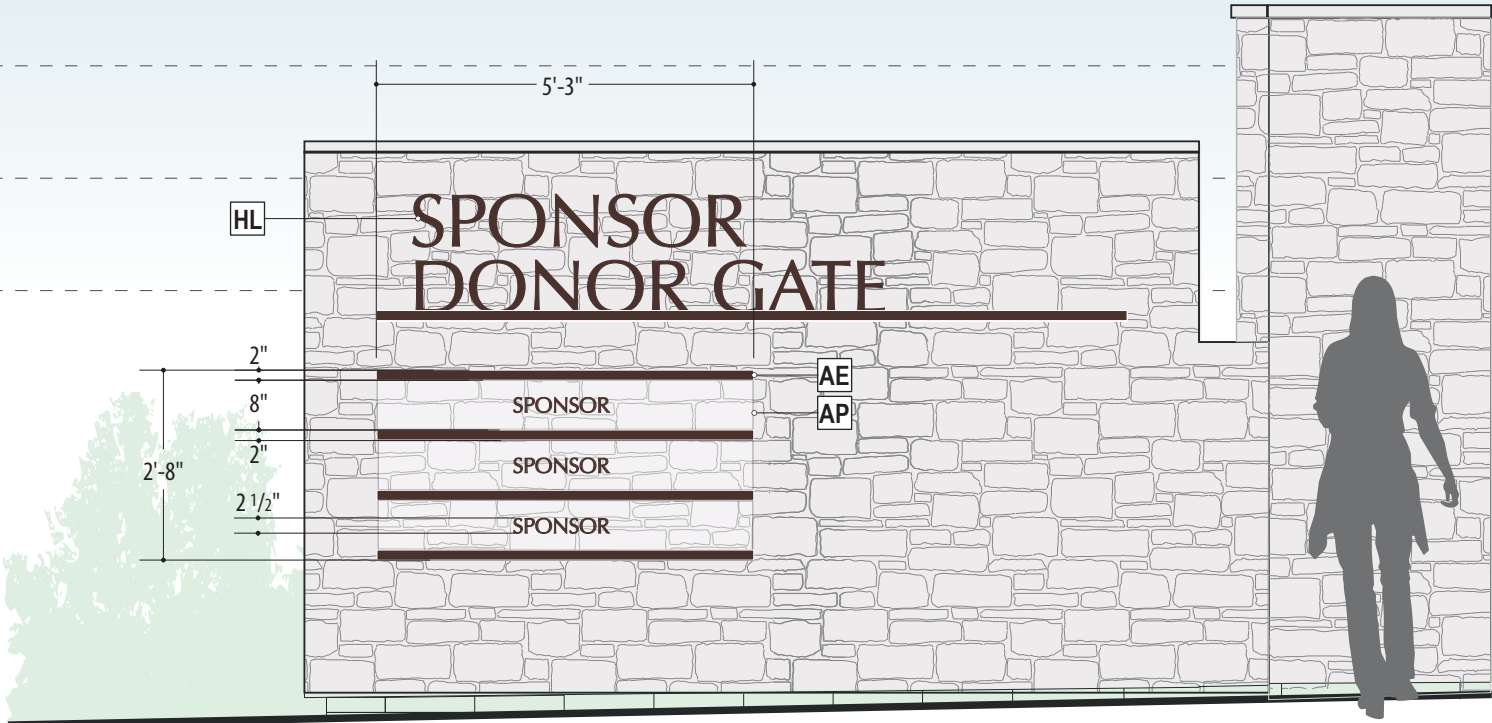


Specifications	
HL	Halo-lit Letterforms - Pin Mounted
AE	Aluminum Channel Extrusion
AC	1/4" Acrylic Panel - Vinyl Graphics
AP	.040 Aluminum Panel with Digital Graphics



Scale: 3/8"=1'-0"

LOCATION 401
Front Elevation
Option A- Horizontal



LOCATION 401
Front Elevation
Option B-Stacked

REVISIONS		
DATE	BY	DESCRIPTION

ENVIRONMENTS & EXPERIENCES
merJe
5 W. Gay St.
West Chester, PA 19380
T 484.266.0648
www.merjedesign.com

SHEET TITLE
Donor Gate - Halo-Lit Location 401/200

CLIENT / PROJECT
The Mann Center Wayfinding and Signage System Plaza and Welcome Center

DATE: September 17, 2025
DRAWN BY: GS
SHEET NO. B.6



LOCATION 401/200
Option A- Horizontal
Day Rendering



LOCATION 401/200
Option B-Stacked
Day Rendering



REVISIONS		
DATE	BY	DESCRIPTION

ENVIRONMENTS & EXPERIENCES

merJe

5 W. Gay St.
West Chester, PA 19380
T 484.266.0648
www.merjedesign.com

SHEET TITLE

Donor Gate - Halo-Lit
Location 401/200

CLIENT / PROJECT

The Mann Center
Wayfinding and Signage System
Plaza and Welcome Center

DATE: September 17, 2025

DRAWN BY: GS

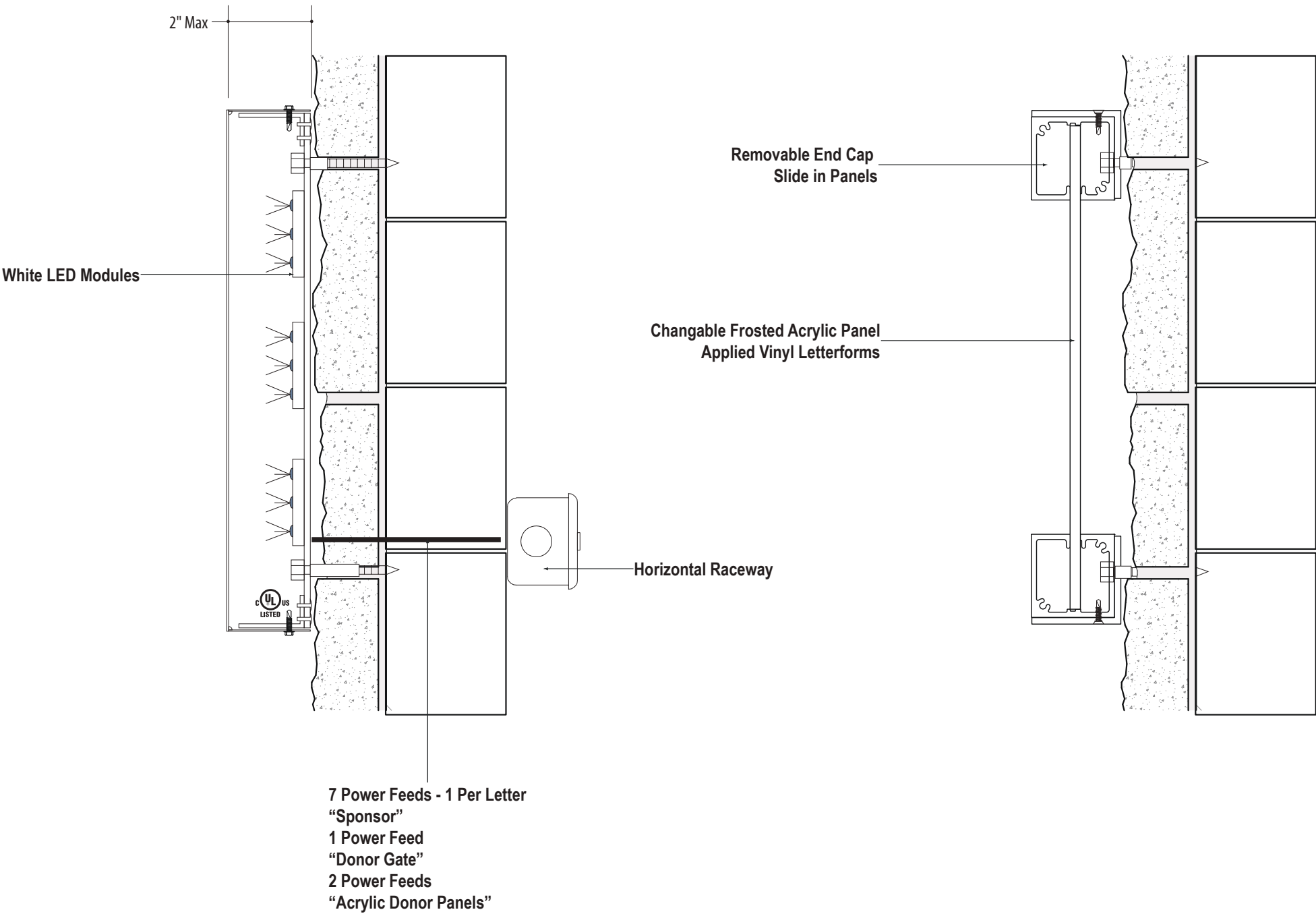
SHEET NO. **B.7**



Stone Wal Material



Pin Mounted Letterforms Example



LOCATION 401
Section View
Halo - Lit Letterforms
Bitro - Resno Letter H1

LOCATION 401
Section View
Sign Comp Extrusion
Changeable - Frosted Acrylic Panel
Applied Vinyl Letterforms

REVISIONS		
DATE	BY	DESCRIPTION

ENVIRONMENTS & EXPERIENCES

merJe

5 W. Gay St.
West Chester, PA 19380
T 484.266.0648
www.merjedesign.com

SHEET TITLE
Donor Gate - Halo-Lit Location 401

CLIENT / PROJECT
The Mann Center Wayfinding and Signage System Plaza and Welcome Center

DATE: September 17, 2025
DRAWN BY: GS
SHEET NO. B.8

LOCATION 100 | Welcome Center - Tickets



LOCATION 100
Day Rendering



LOCATION 100
Night Rendering

Specifications	
HL	Halo-lit Letterforms - Pin Mounted



LOCATION 100
Welcome Center Building (WCB)
South Elevation
Location 100

Scale: 3/16"=1'-0"

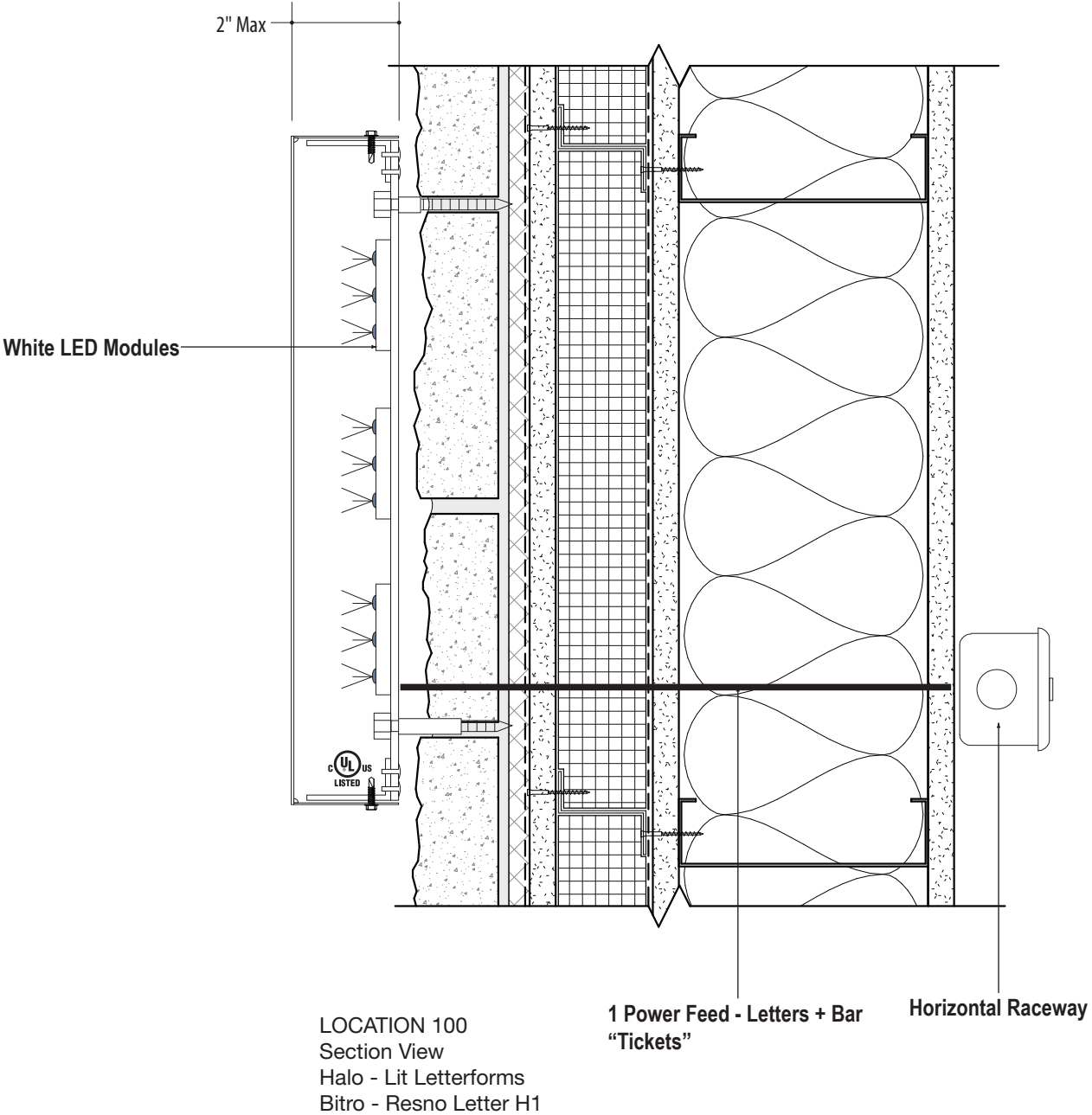
REVISIONS			ENVIRONMENTS & EXPERIENCES merJe 5 W. Gay St. West Chester, PA 19380 T 484.266.0648 www.merjedesign.com	SHEET TITLE Welcome Center - Tickets Location 100	CLIENT / PROJECT The Mann Center Wayfinding and Signage System Plaza and Welcome Center	DATE: September 17, 2025 DRAWN BY: GS SHEET NO. B.9
DATE	BY	DESCRIPTION				



Stone Wal Material



Pin Mounted Letterforms Example



REVISIONS		
DATE	BY	DESCRIPTION

ENVIRONMENTS & EXPERIENCES

merJe

5 W. Gay St.
West Chester, PA 19380
T 484.266.0648
www.merjedesign.com

SHEET TITLE

Welcome Center - Tickets
Location 100

CLIENT / PROJECT

The Mann Center
Wayfinding and Signage System
Plaza and Welcome Center

DATE:	September 17, 2025
DRAWN BY:	GS
SHEET NO.	B.10

INTERIOR CAMPUS | Optima Consistency



REVISIONS		
DATE	BY	DESCRIPTION

ENVIRONMENTS & EXPERIENCES

merJe

5 W. Gay St.
West Chester, PA 19380
T 484.266.0648
www.merjedesign.com

SHEET TITLE

Interior Campus
Optima - Consistency
Informational

CLIENT / PROJECT

The Mann Center
Wayfinding and Signage System
Plaza and Welcome Center

DATE: September 17, 2025

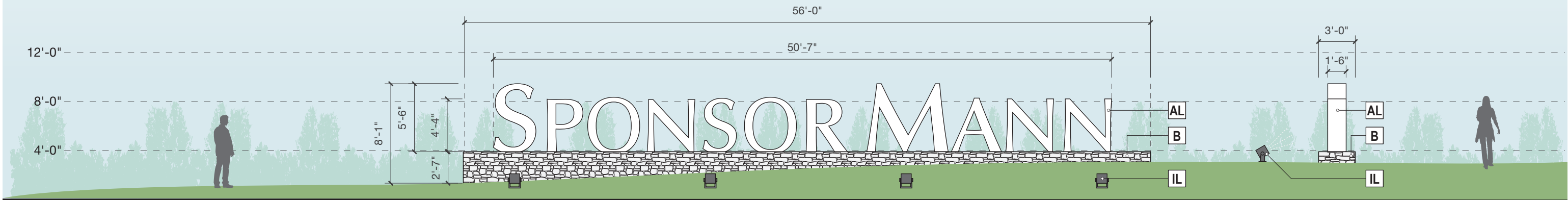
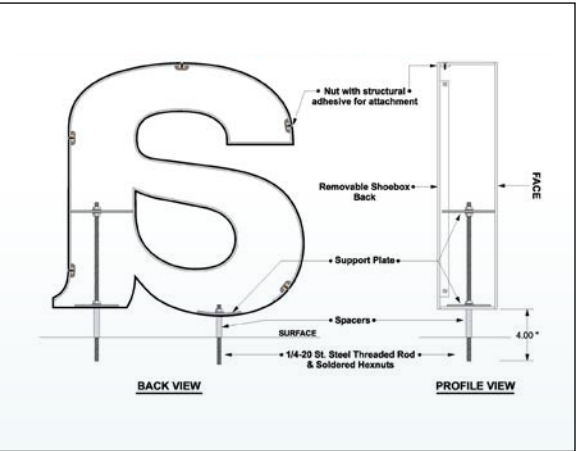
DRAWN BY: GS

SHEET NO. **B.11**

LOCATION 01 | Landmark



Specifications	
B	Concrete Base with Stone Veneer
AL	Fabricated Aluminum Letters
IL	Illumination: Ground Mounted Spot-Lights



Scale: 1/8"=1'-0"

Location 01 Front Elevation

Side View

REVISIONS			ENVIRONMENTS & EXPERIENCES merJe 5 W. Gay St. West Chester, PA 19380 T 484.266.0648 www.merjedesign.com	SHEET TITLE Landmark Location 01	CLIENT / PROJECT The Mann Center Wayfinding and Signage System Plaza and Welcome Center	DATE: September 17, 2025 DRAWN BY: GS SHEET NO. B.12
DATE	BY	DESCRIPTION				



REVISIONS		
DATE	BY	DESCRIPTION

ENVIRONMENTS & EXPERIENCES

merJe

5 W. Gay St.
West Chester, PA 19380
T 484.266.0648
www.merjedesign.com

SHEET TITLE
Landmark Location 01

CLIENT / PROJECT
The Mann Center Wayfinding and Signage System Plaza and Welcome Center

DATE: September 17, 2025
DRAWN BY: GS
SHEET NO. B.13



Blast Powercore gen5, RGBW

Exterior versatile and customizable luminaire with intelligent RGBW light

Blast Powercore gen5, RGBW high-performance LED luminaires combine white and rich, saturated, color and color-changing effects with simplified installation. Blast Powercore gen5 offers a range of accessories that allow customizable beam angles for floodlighting, spotlighting, wall washing, and grazing, along with the efficiency and cost-effectiveness of Powercore technology in a rugged die-cast aluminium housing.

- Higher lumen output for a dynamic color luminaire
- Better-quality white light as compared to RGB
- Color flexibility and consistency

Date: _____
Type: _____
Firm Name: _____
Project: _____



Product page

Beam Angle	3° (Native), 5°, 10°, 20°, 40°, 60°, 80°, 10° x 40°
Lumens*	1,733 to 2,547
Efficacy (lm/W) All Channels Full On	36.7 to 54.0
LED Channels	Red/Green/Blue/White
Environment	Dry/Damp/Wet Location, IP66

Input Voltage	100 to 277 VAC, auto-ranging, 50/60 Hz via Data Enabler Pro
Power Consumption	46.4 W
Weight	3.9 kg (8.2 lb)
Housing Material	Die-cast aluminium, powder-coated finish
Approbations	UL/cUL, FCC Class A, CE, PSE, CQC, RCM



Option A- Blast Powercore

TERRA LINEAR™

ACCLAIM
LIGHTING

PROJECT FIRM ORDER # TYPE QTY



Terra Linear™ are rugged, drive-over ready fixtures designed for all-weather in-ground applications. Available in 1 foot and 4 foot lengths, these aluminum-bodied IP68 fixtures are particularly suited to recessed façade lighting applications. Using unified power and DMX control links, Terra Linear fixtures can be rapidly daisy-chained in long runs. All standard mains voltages are directly supported or, to achieve impressive single runs up to 700 linear feet (213m), Terra Linear can be driven by Acclaim Lighting's XTR Driver. Anti-slip top coatings, anti-theft security screws and an IK10 drive-over rating of up to 6,000 lbs (2,721 kg) make Terra Linear a natural choice for use in all public areas.

AT A GLANCE

Optics

Emitters

Fixed White (2400K, 2700K, 3000K, 3500K or 4000K) or Dynamic White (DW) (2700K to 6000K) or RGBW (W=3000K, 4000K or 6000K) or RGBA

Power

100 to 277VAC 50/60Hz | 380VDC via XTR Driver

Temperature

-40° F to 131° F
-40° C to 55° C

Drive over

6,000 lbs
2,721 kg
maximum

Protection

Ingress: IP68
Impact: IK10
Vibration: 3G

Core technologies

SPECTRUMFOUR TECHNOLOGY
XTR LINK TECHNOLOGY



Option B- Terra Linear

REVISIONS			ENVIRONMENTS & EXPERIENCES merJe 5 W. Gay St. West Chester, PA 19380 T 484.266.0648 www.merjedesign.com	SHEET TITLE Landmark Location 01	CLIENT / PROJECT The Mann Center Wayfinding and Signage System Plaza and Welcome Center		DATE: September 17, 2025	
DATE	BY	DESCRIPTION					DRAWN BY: GS	
							SHEET NO. B.14	