



Memorandum

To: Alex Smith, Director, Art Commission
From: Nobuki Iijima, Project Coordinator, Capital Program Office
Date: August 27, 2025
Re: Request for Administrative Approval / Art Commission Review for Final
Commerce Connector, 4th & Market Streets (File # 168-25)

We are writing to provide a follow-up to the conceptual approval received for the Commerce Connector project at the July Art Commission meeting. At that time, the Commission requested confirmation regarding whether the project budget necessitates the Percent for Art requirement.

We confirm that this project does require a Percent for Art component. We have been coordinating closely with the Office of Arts, Culture and the Creative Economy (OACCE), and the proposed perforated metal panel design will serve as the project's Percent for Art element. The artwork for the proposed perforated metal panel design will be presented to the Art Commission as a separate project.

With this confirmation, we respectfully request administrative final approval for the site improvements at the Commerce Connector.

Thank you for your continued guidance and consideration.

cc: Aparna Palantino, Director, CPO, Pedro Pinto, Deputy Director, CPO
Francesco Cerrai, Project Director, CPO, Marguerite Anglin, Public Art Director, OACCE
Noni Clements, Asst. Public Art Director, OACCE, Joe Schiavo, Old City Green
Julie Bush, Ground reconsidered, Taylor Parchinski, Ground Reconsidered
Nobuki Iijima, Project Coordinator, CPO nobuki.iijima@phila.gov or (215) 683-4486

The Philadelphia Art Commission Decision Form

The Philadelphia Art Commission

Established 1911

Robert Roesch
Chair

Carmen Febo San Miguel

Matthew Kenyatta

James Lowe

Raed Nasser

Pepón Osorio

Rebecca Segall

Alex M. Smith
Director

File #: 168-25

Commission Meeting Date: 07/09/2025

Name: Nobuki Iijima
Philadelphia Parks and Recreation
1515 Arch St., 11th Floor
Philadelphia, PA 19102

Project Name & Location: Commerce Connector
4th & Market Streets

Proposal: The proposal relates to site improvements at Commerce Connector which is located roughly at 4th and Market Streets. The project will replace existing paving, site furnishings, lighting, and planting as they are all deemed to be in poor condition. Throughout the site new plantings will include additional canopy and ornament trees in addition to shrubs, perennials, and groundcovers that are best suited for the existing shaded light condition. The hardscape will consist mainly of brick with the insertion of elliptical central gathering area at the east end of the site that will be composed of concrete unit pavers. Additional site design updates include bollards at the North 4th Street entrance, cobble stone banding at planting areas, screening elements, and rebuilt stairs and retaining walls. The Commission notes that the art work, "Thirteen into One", by Harold Kimmelman, is slated to be relocated on-site.

Commission Decision: CONCEPT APPROVAL

Remarks: The Commission requests the applicant confirm whether the project necessitates an additional Percent for Art project given the project's budget.



Alex M. Smith
Director of the Philadelphia Art Commission

One Parkway Building
1515 Arch Street
13th Floor
Philadelphia, PA 19102

215-683-4636
artcommission@phila.gov

Art Commission approval is not an endorsement for any approval, exception or variance that the proposal might require from any other department, board or commission.

COMMERCE CONNECTOR



PHILADELPHIA
PARKS & RECREATION



Ground Reconsidered





1 View from N 4th St. entrance



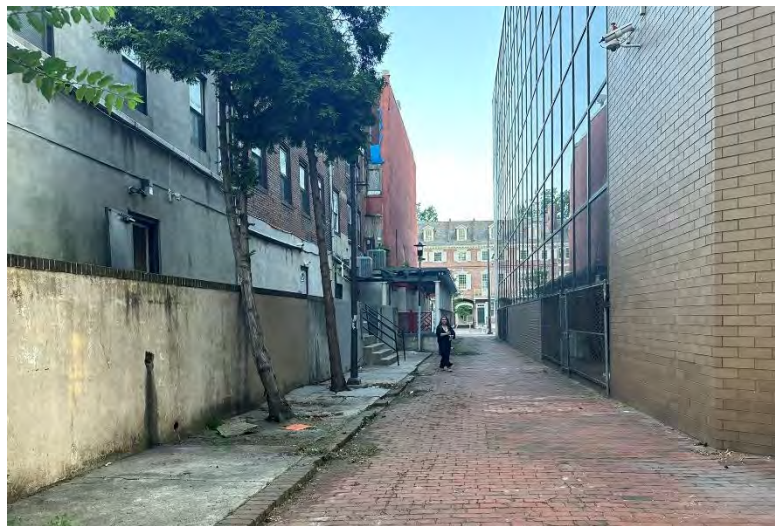
2 Trees and paving in poor condition



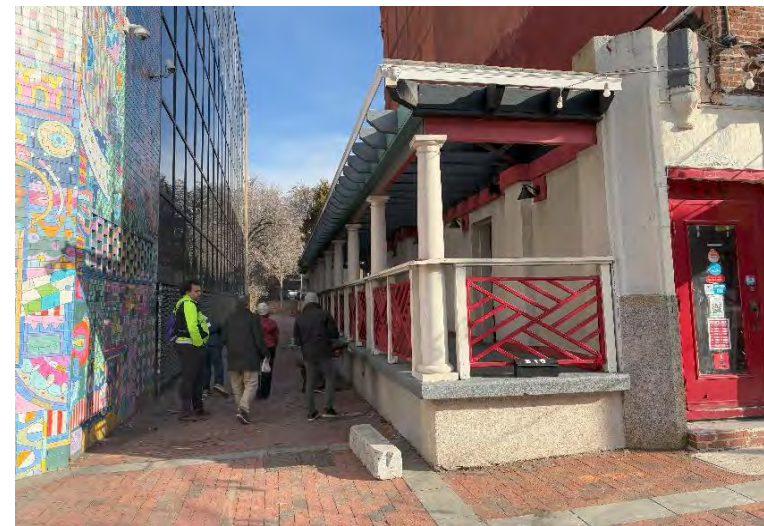
3 Site wall at raised site in poor condition



4 Cars parked over edge of site wall



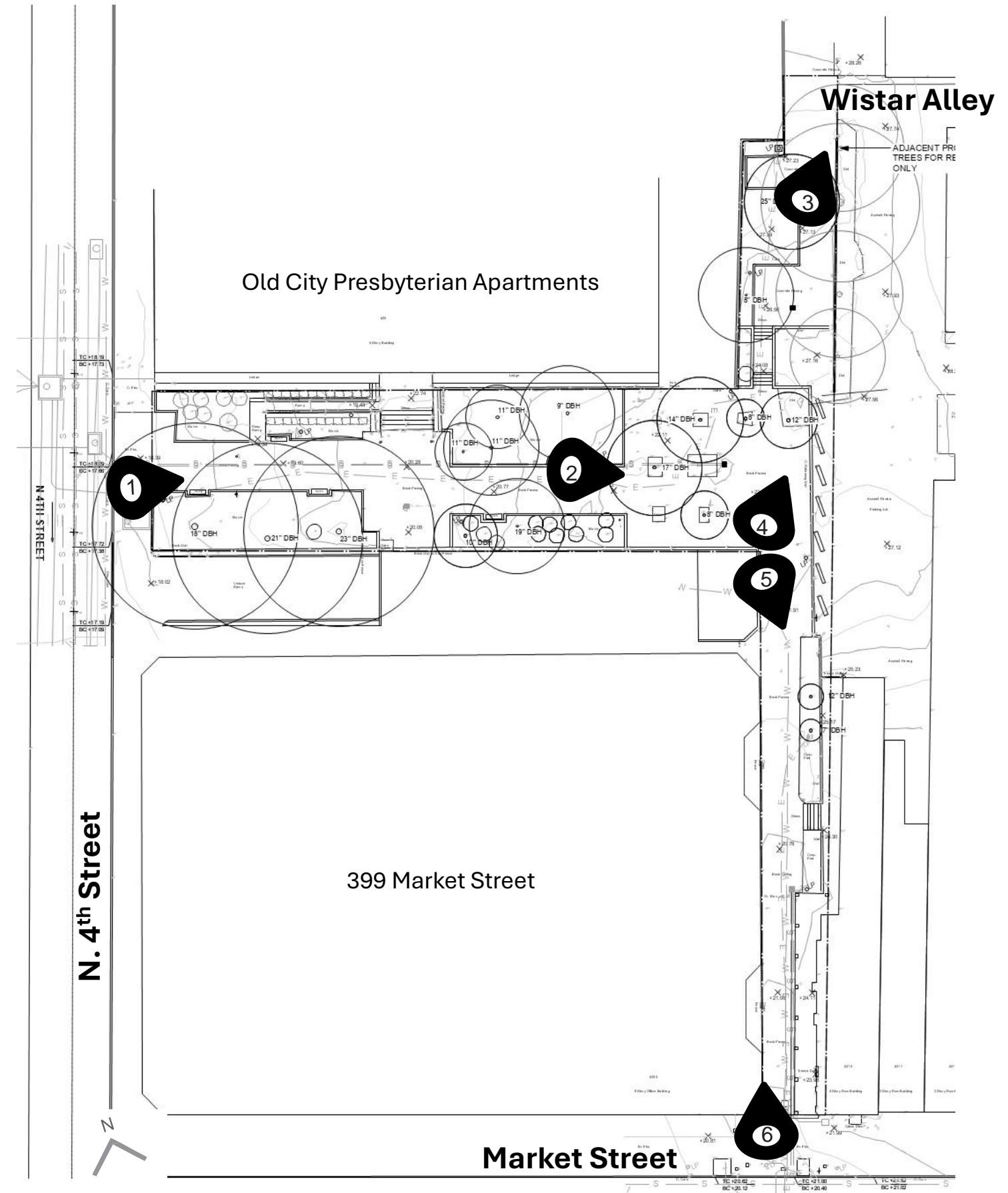
5 Trees and paving in poor condition

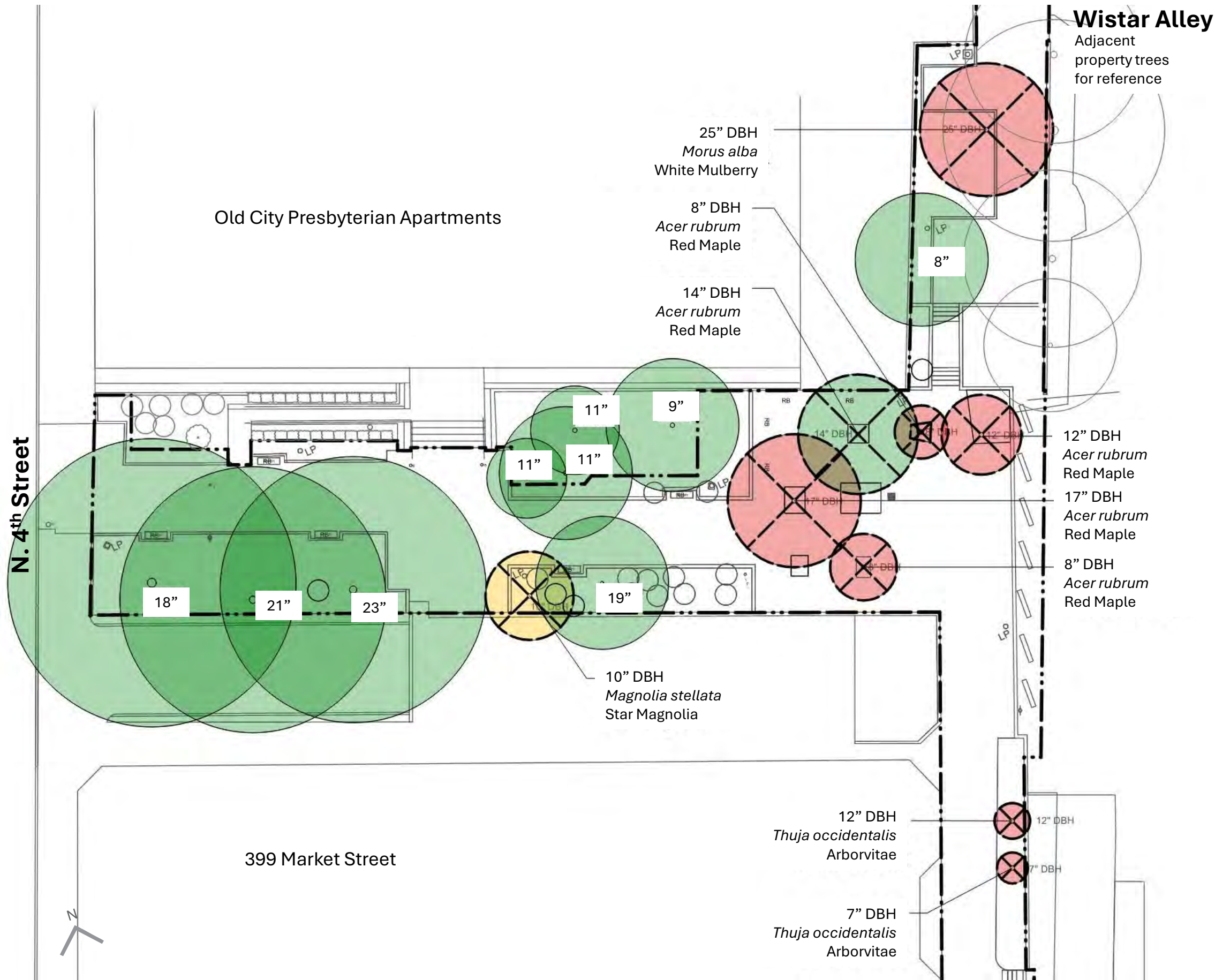


6 View from Market St. entrance

COMMERCE CONNECTOR

EXISTING CONDITIONS SITE PHOTOS







MATERIALS LEGEND

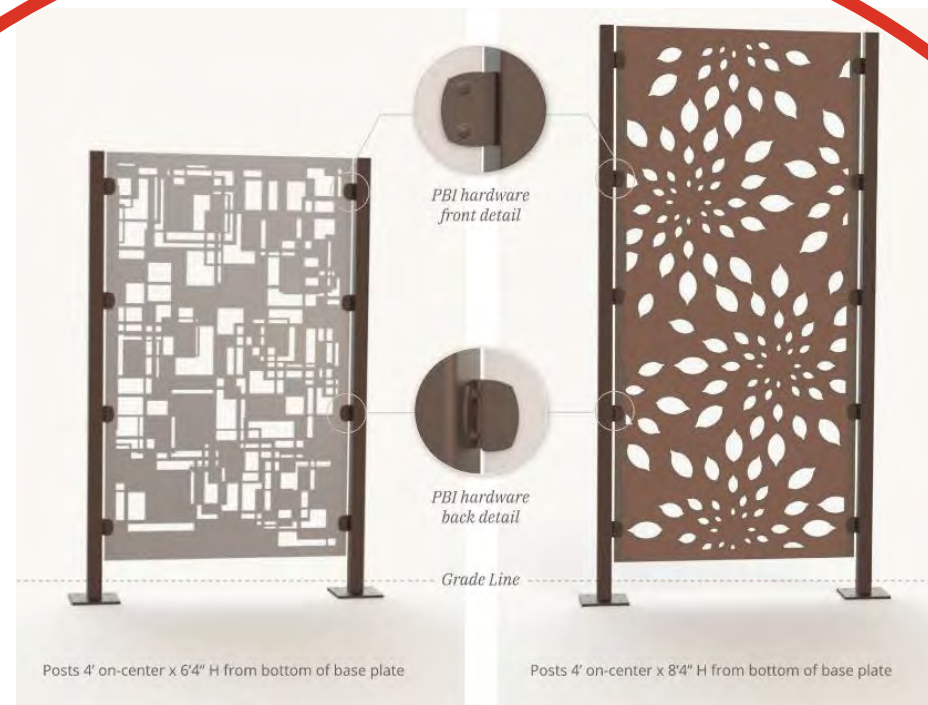
- CONCRETE PAVING
- TINTED CONCRETE PAVING
- BRICK PAVING
- WELDED WIRE FENCE
- PERFORATED METAL SCREEN
- STANDARD BENCH
- BISTRO TABLE AND CHAIRS
- TRASH RECEPTACLE
- BICYCLE RACK

PLANTING LEGEND

- EXISTING CANOPY TREE
- PROPOSED CANOPY TREE
- PROPOSED UNDERSTORY TREE
- PROPOSED SHRUBS



BRICK PAVING



PERFORATED METAL SCREEN

PERCENT FOR ART



GRANITE CURBS



WELDED WIRE FENCE

COMMERCE CONNECTOR

SITE MATERIALS



COMMERCE CONNECTOR

SITE PLAN

Artist: Harold Kimmelman
Title: Thirteen into One
Produced in 1977 for PRA Percent for Art Program



EXISTING SCULPTURE TO BE
REPURPOSED AS A FOUNTAIN



PPR Standard Bench



Tables & Chairs



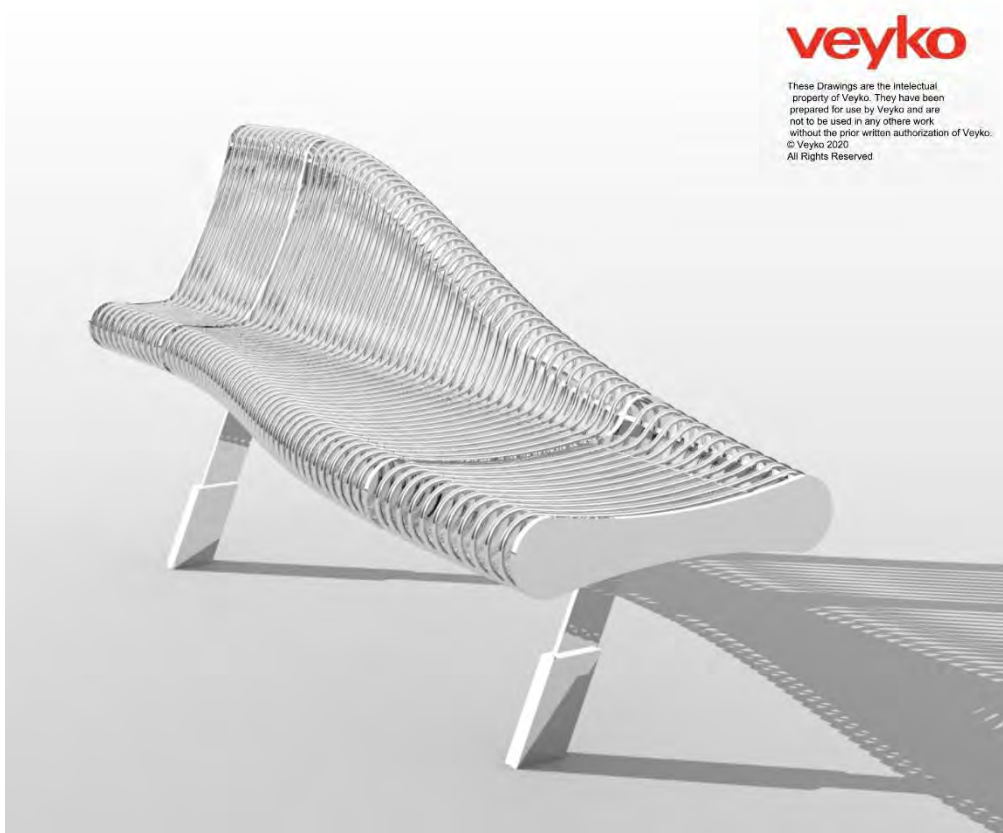
Precast Concrete Wall with Bench Topper



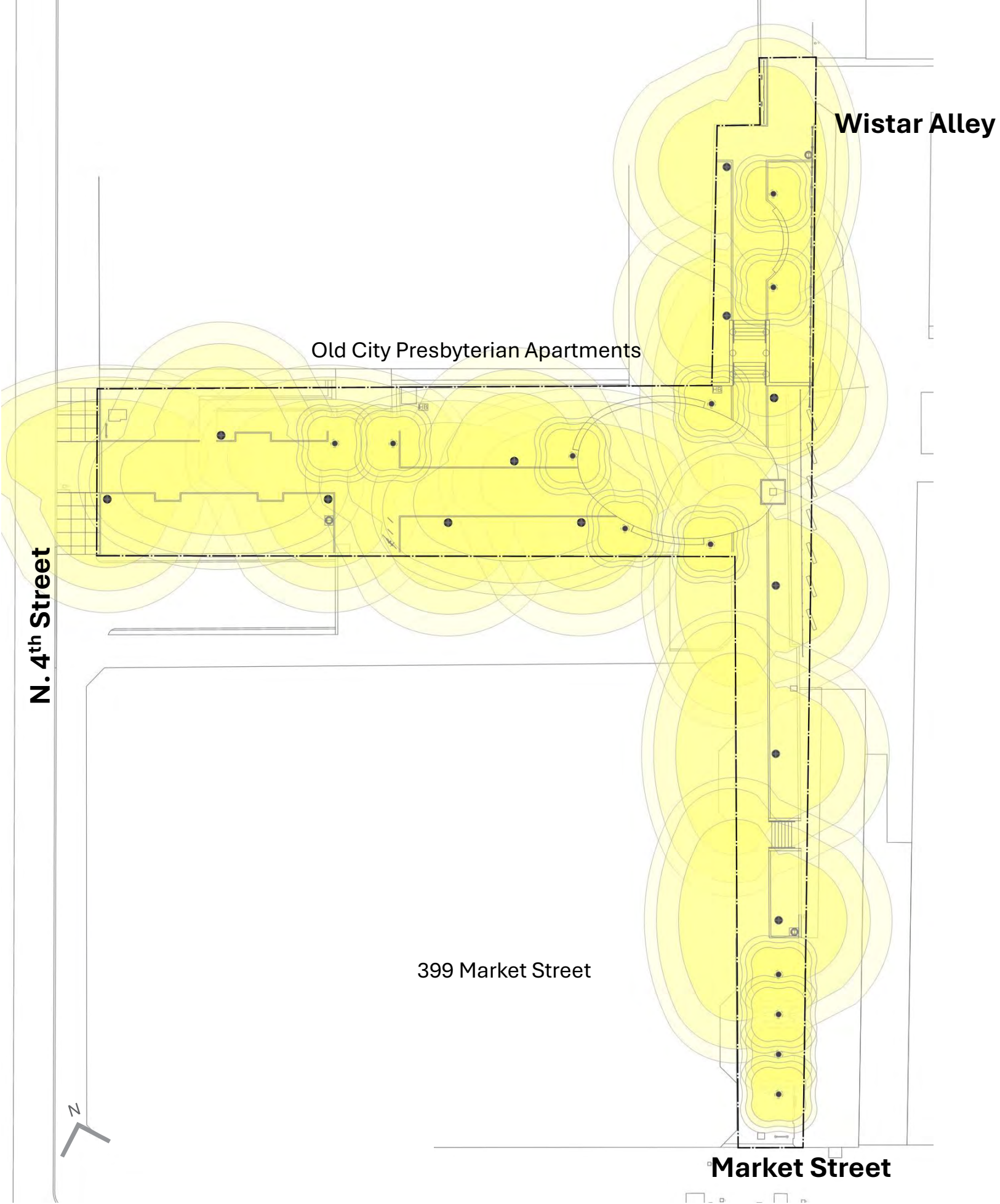
PPR Standard Trash Receptacle



PPR Standard Bicycle Rack

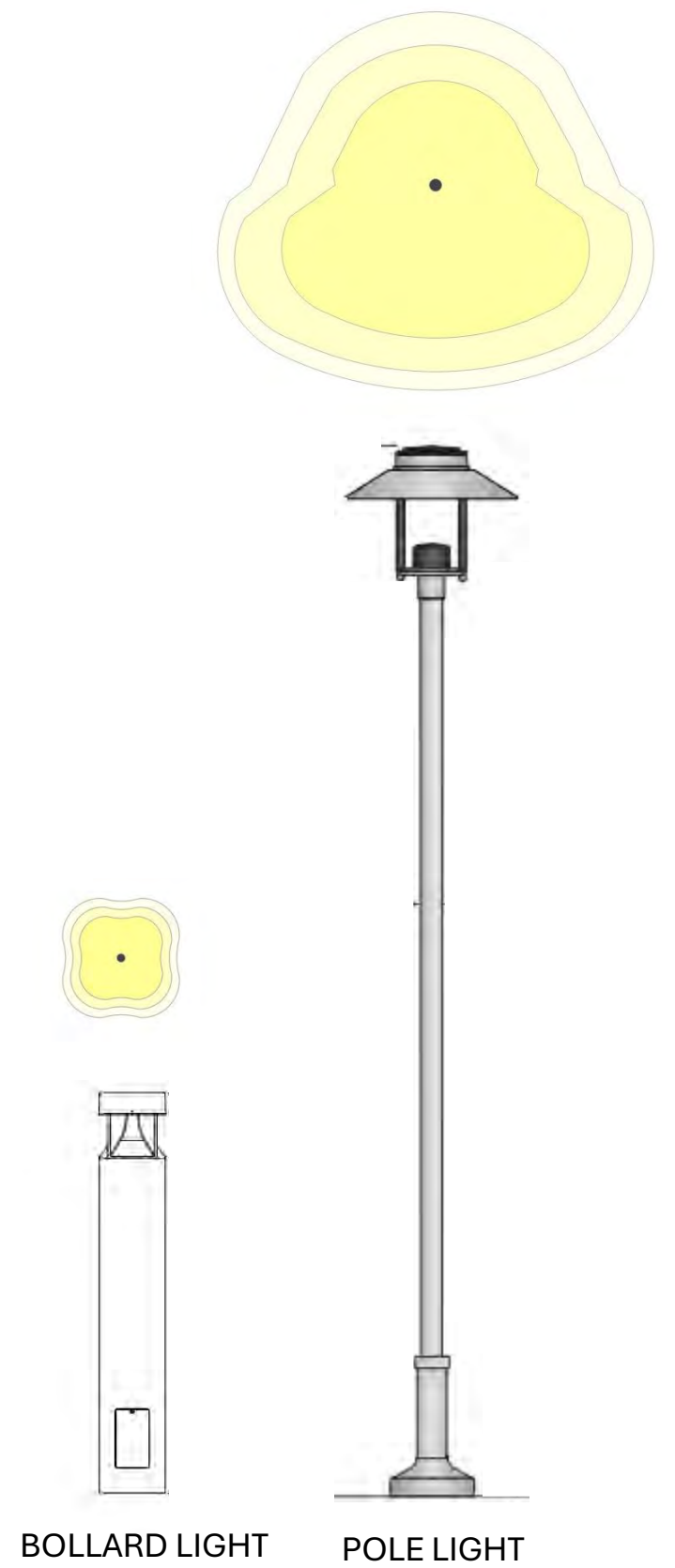


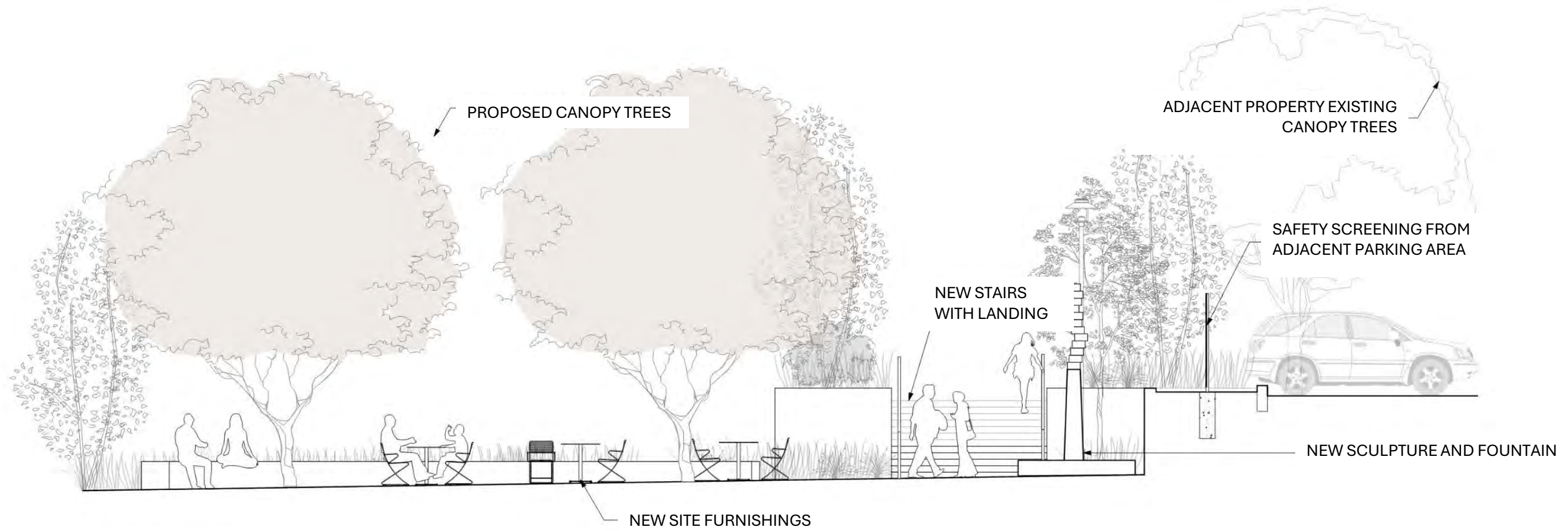
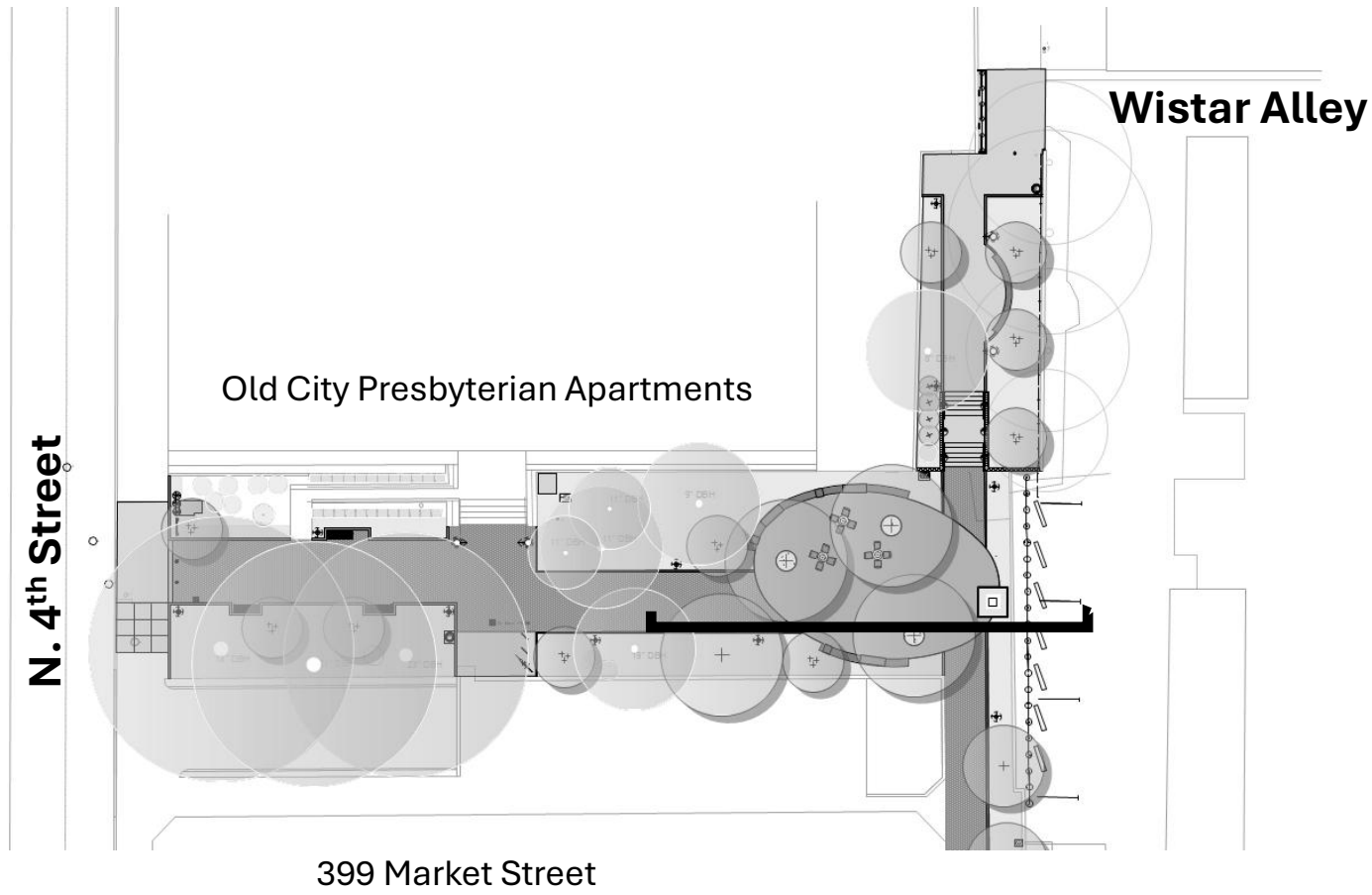
Add Alternate Custom Bench Series to replace precast wall and bench toppers

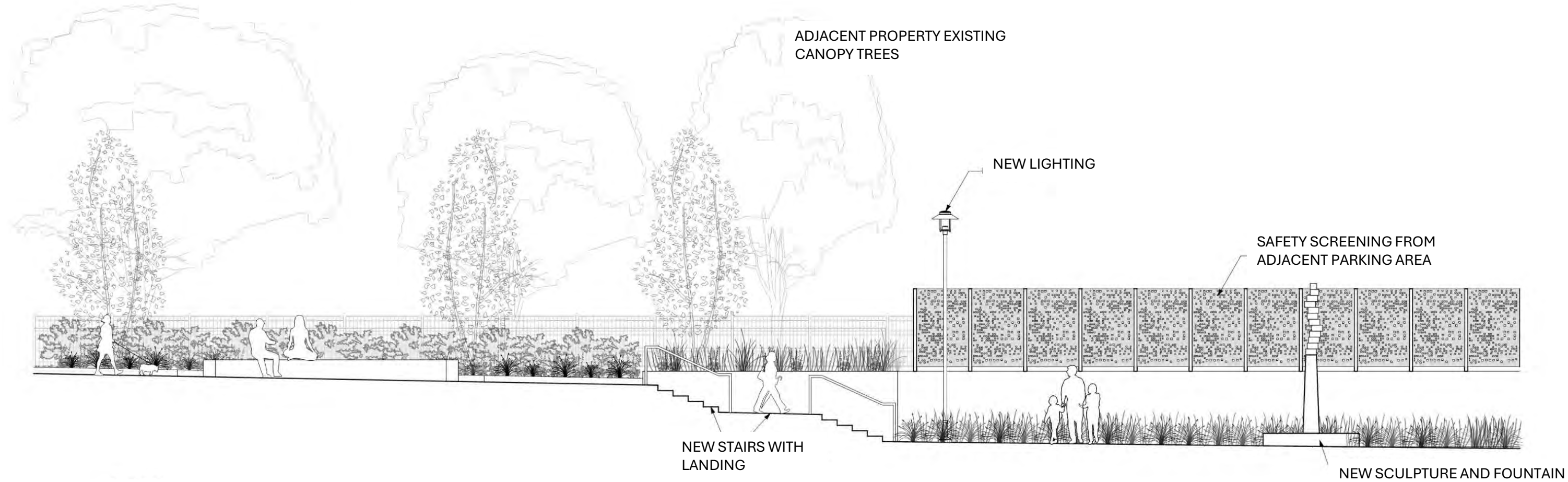
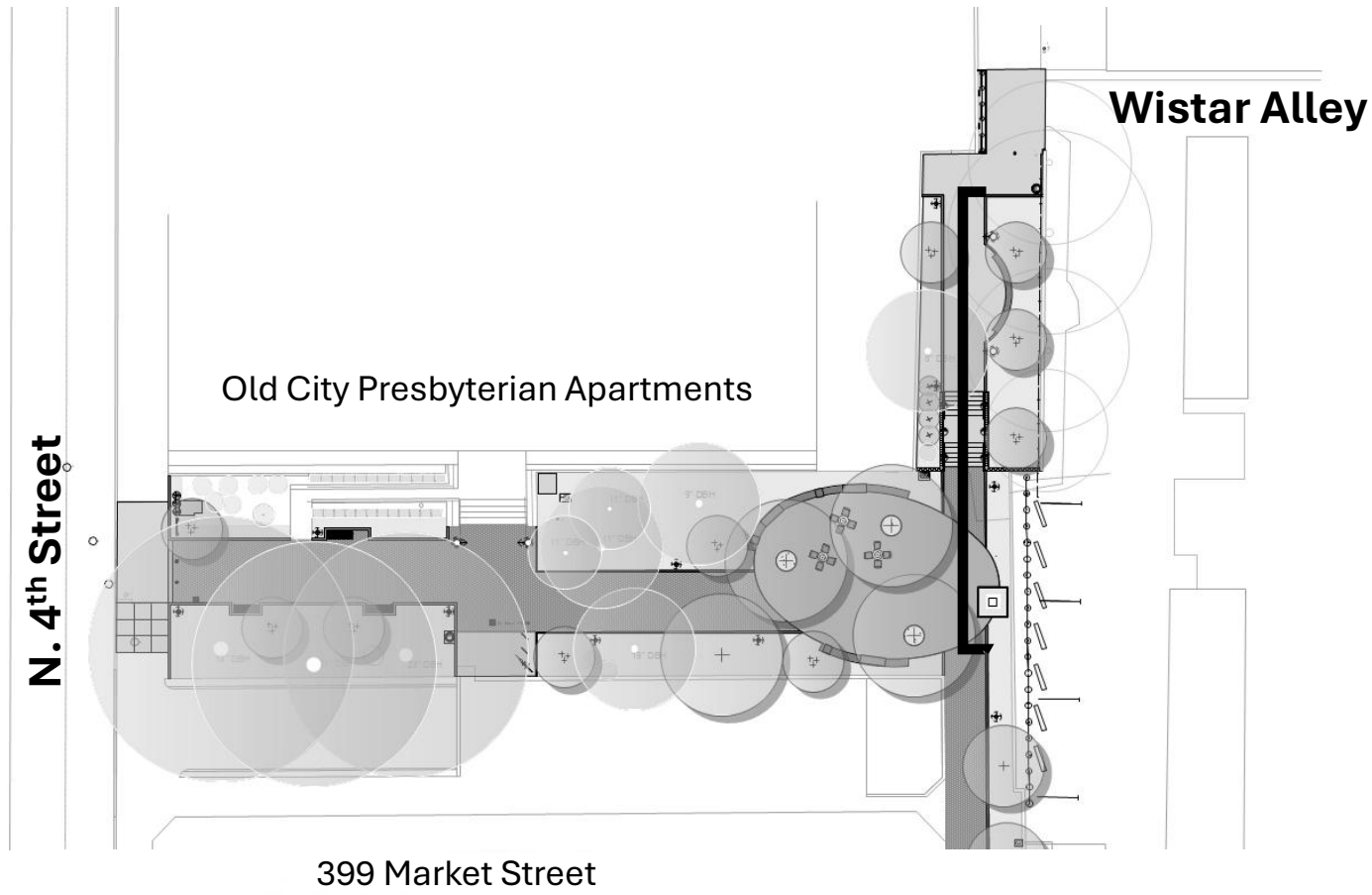


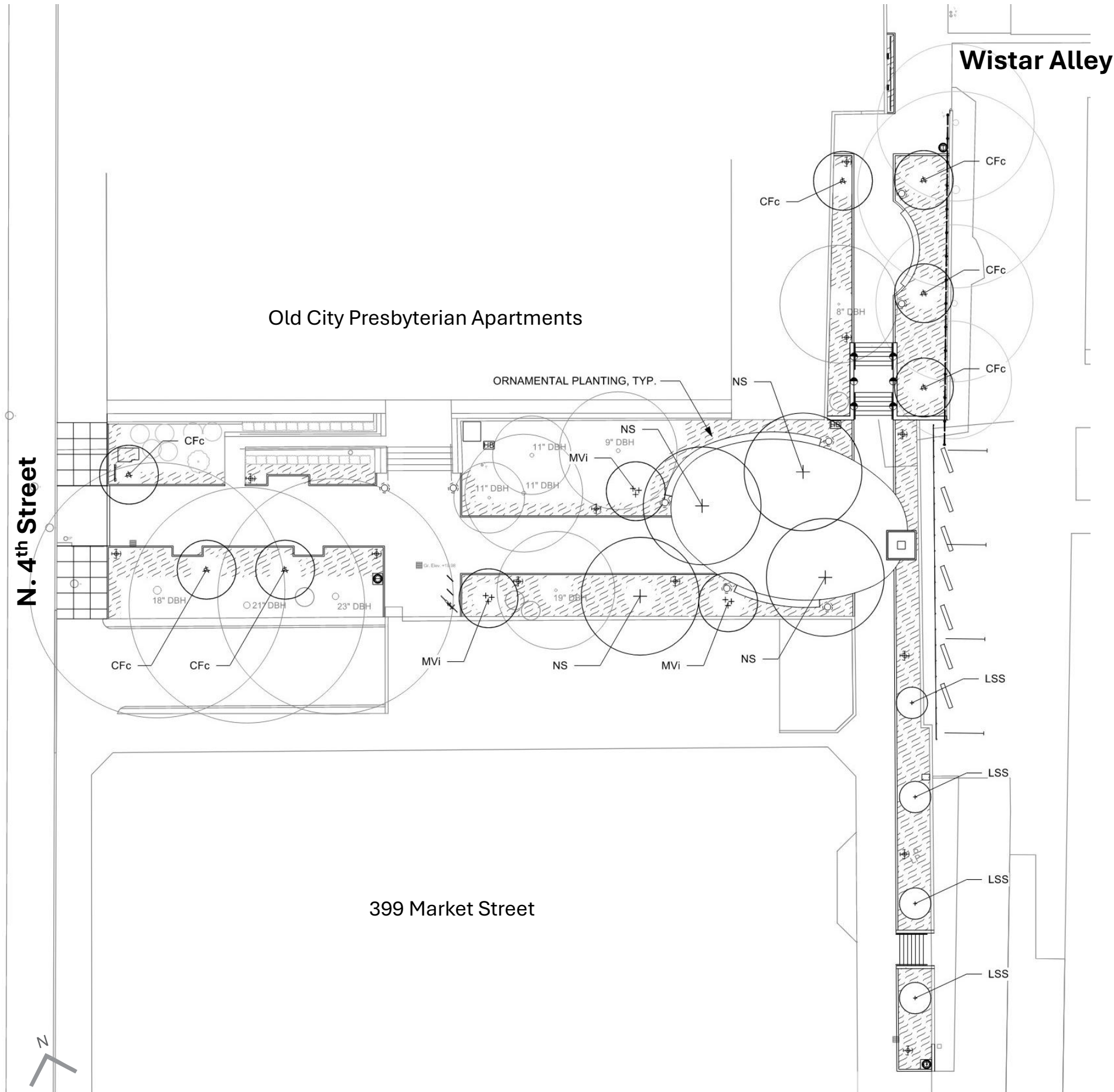
COMMERCE CONNECTOR

LIGHTING PLAN









CANOPY TREES



'Slender Silhouette' Sweetgum
Liquidambar styraciflua 'Slender Silhouette'



Blackgum
Nyssa sylvatica

ORNAMENTAL TREES



'Cherokee Princess' Dogwood
Cornus florida 'Cherokee Princess'



Sweetbay Magnolia
Magnolia virginiana

PLANT SCHEDULE					
ID	Qty	Botanical Name	Common Name	Size	Spacing
CANOPY TREES					
LSS	4	<i>Liquidambar styraciflua</i> 'Slender Silhouette'	Slender Silhouette Sweetgum	3.5" CAL.	As Shown
NS	4	<i>Nyssa sylvatica</i>	Blackgum	3.5" CAL	As Shown
MULTI-STEMMED TREES					
CFc	7	<i>Cornus florida</i> 'Cherokee Princess'	Cherokee Princess Dogwood	3" CAL.	As Shown
MVi	3	<i>Magnolia virginiana</i>	Sweet Bay Magnolia	3" CAL.	As Shown

SHRUBS



Rosebay Rhododendron
Rhododendron maximum



Inkberry Holly
Ilex glabra 'Densa'



Winterberry Holly
Ilex verticillata



Smoothleaf Hydrangea
Hydrangea arborescens

PERENNIALS & GROUNDCOVERS



American Royal Fern
Osmunda regalis var. spectabilis



Marginal Wood Fern
Dryopteris marginalis



Foamflower
Tiarella cordifolia



Dense Blazing Star
Liatris spicata



Wild Stonecrop
Sedum ternatum



Creeping Lilyturf
Liriope spicata





COMMERCE CONNECTOR

CENTRAL GATHERING SPACE





COMMERCE CONNECTOR

MARKET STREET ENTRANCE

COMMERCE CONNECTOR



PHILADELPHIA
PARKS & RECREATION



Ground Reconsidered