

Ground Reconsidered

August 25, 2025

Alex Smith
The Philadelphia Art Commission
One Parkway, 1515 Arch Street, 13th Floor
Philadelphia, PA 19102

Dear Alex Smith,

We are writing to request time on the Art Commission agenda for Wednesday, September 10, for Concept Approval for improvements to the schoolyard at John H. Webster School, 3400 Frankford Avenue. These improvements in partnership between Trust for Public Land (TPL), the School District of Philadelphia (SDP) and the Philadelphia Water Department (PWD).

A brief description of the project follows. Supporting materials will be shared by next Wednesday, September 3.

Webster Elementary School (Kensington Neighborhood, pre-K-5) has a half-acre schoolyard that currently consists of asphalt pavement and benches. The building walls surrounding the schoolyard have ornate brickwork and painted murals. The project team worked with the 3rd grade class to create a conceptual design for their school community and the design team is pushing their concept to reality.

The current construction budget is approximately \$1,850,000. The sources of funding are as follows:

Trust for Public Land	\$571,928.00
Philadelphia School District	\$250,000.00
Philadelphia Water Department Stormwater Incentives Grant	\$1,028,072.00

Proposed upgrades include a new playground, painted track, synthetic turf playing field, half basketball court, raingarden, and outdoor classroom. The project also includes two new subsurface basins to maximize stormwater management in a constrained space. The project also intends to manage stormwater runoff from the adjacent street right of way. The costs of green inlet installation, stormwater infrastructure improvements in the street right of way, and subsurface basins are not included in the budget. TPL is working with PWD on these additional items.

Please let me know if you need any additional information.

Sincerely,



Julie A. Bush, ASLA

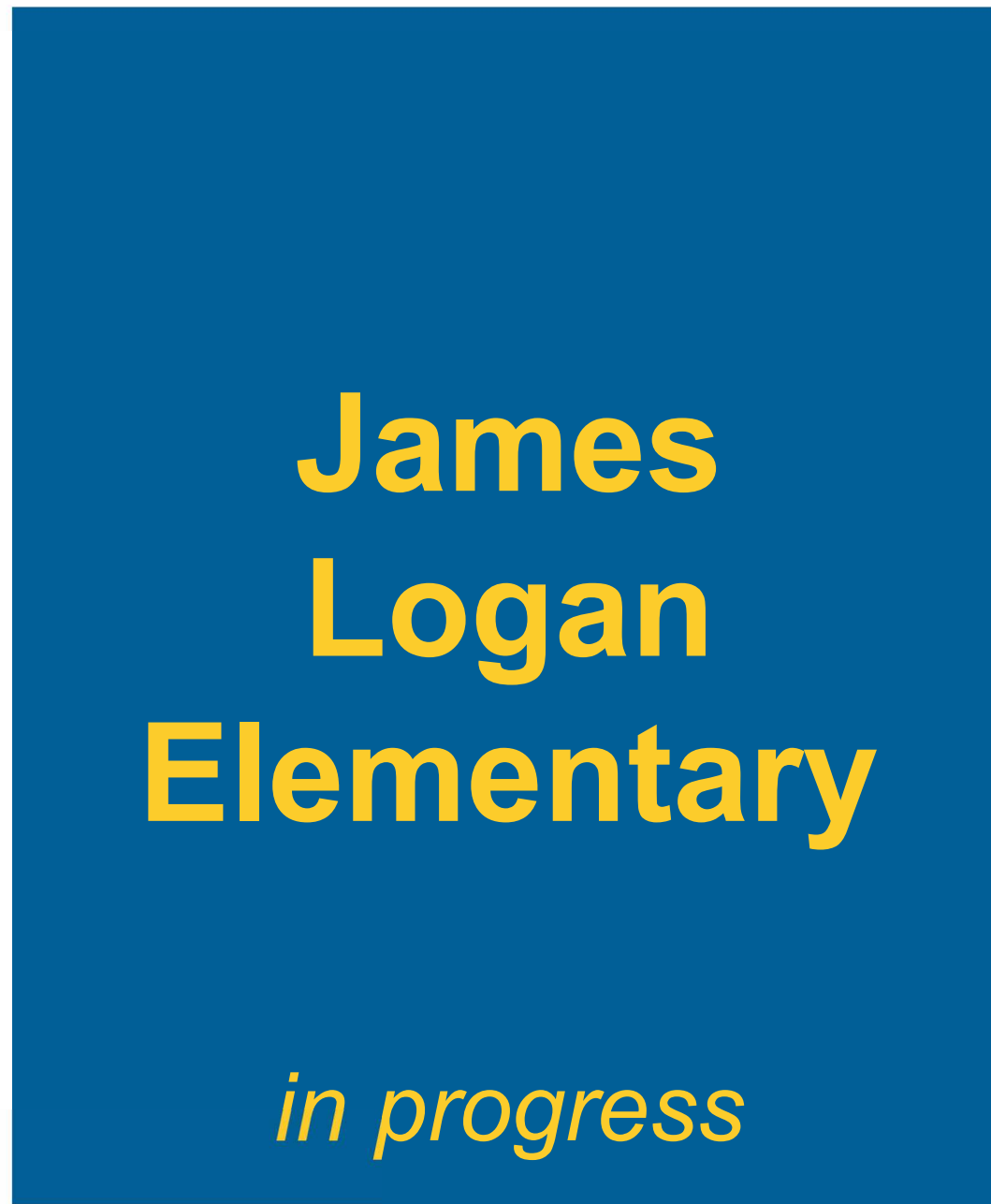
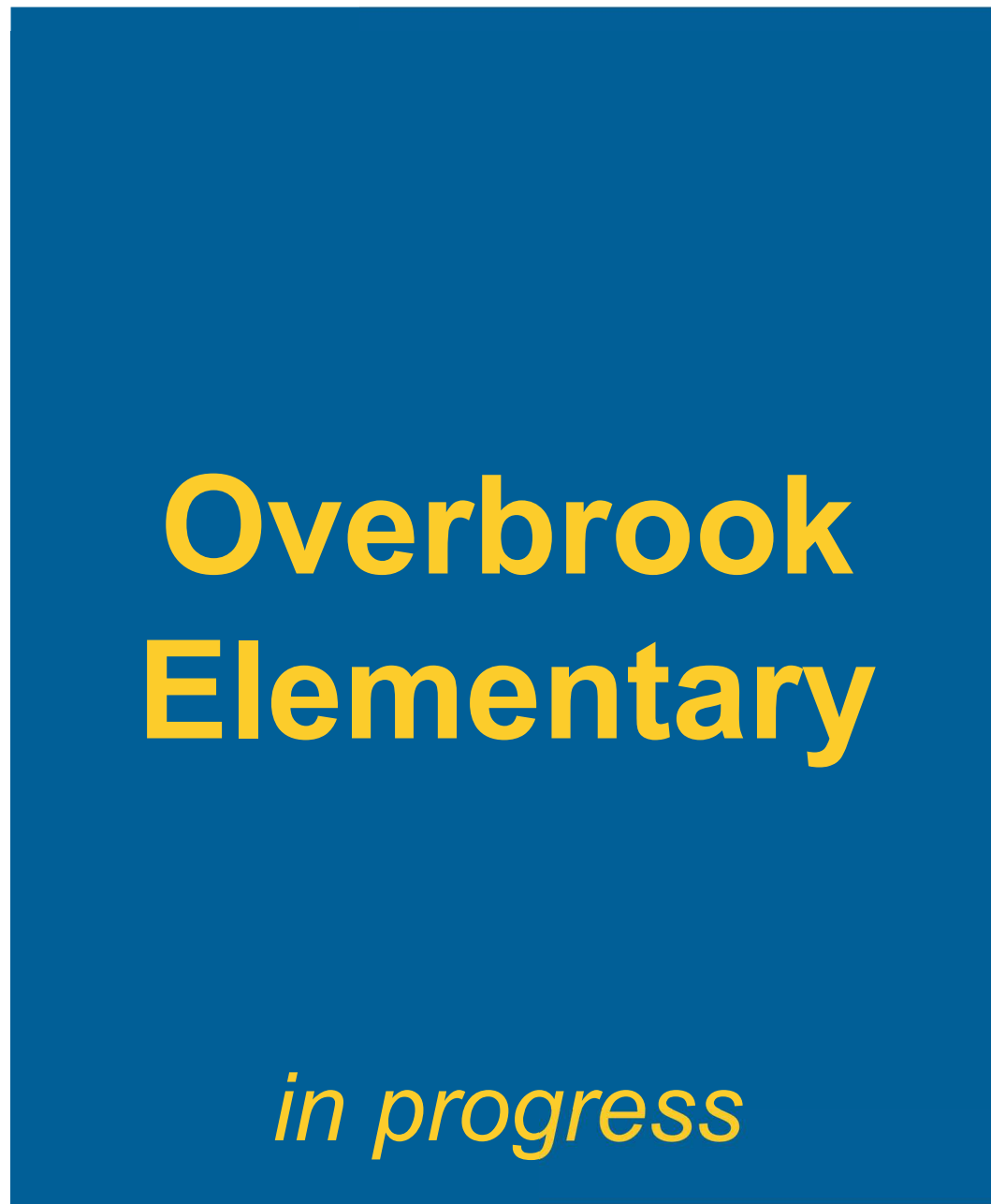
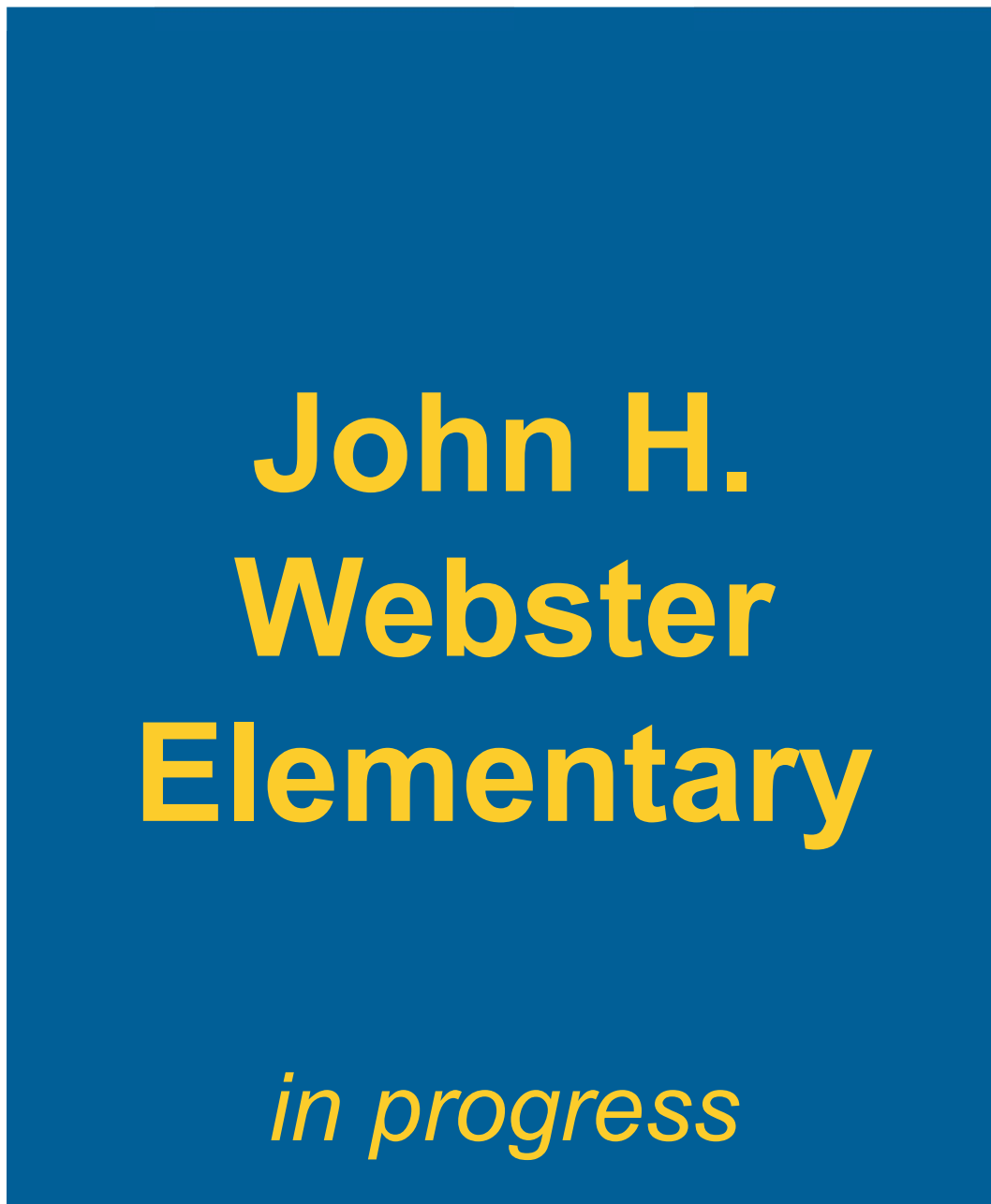
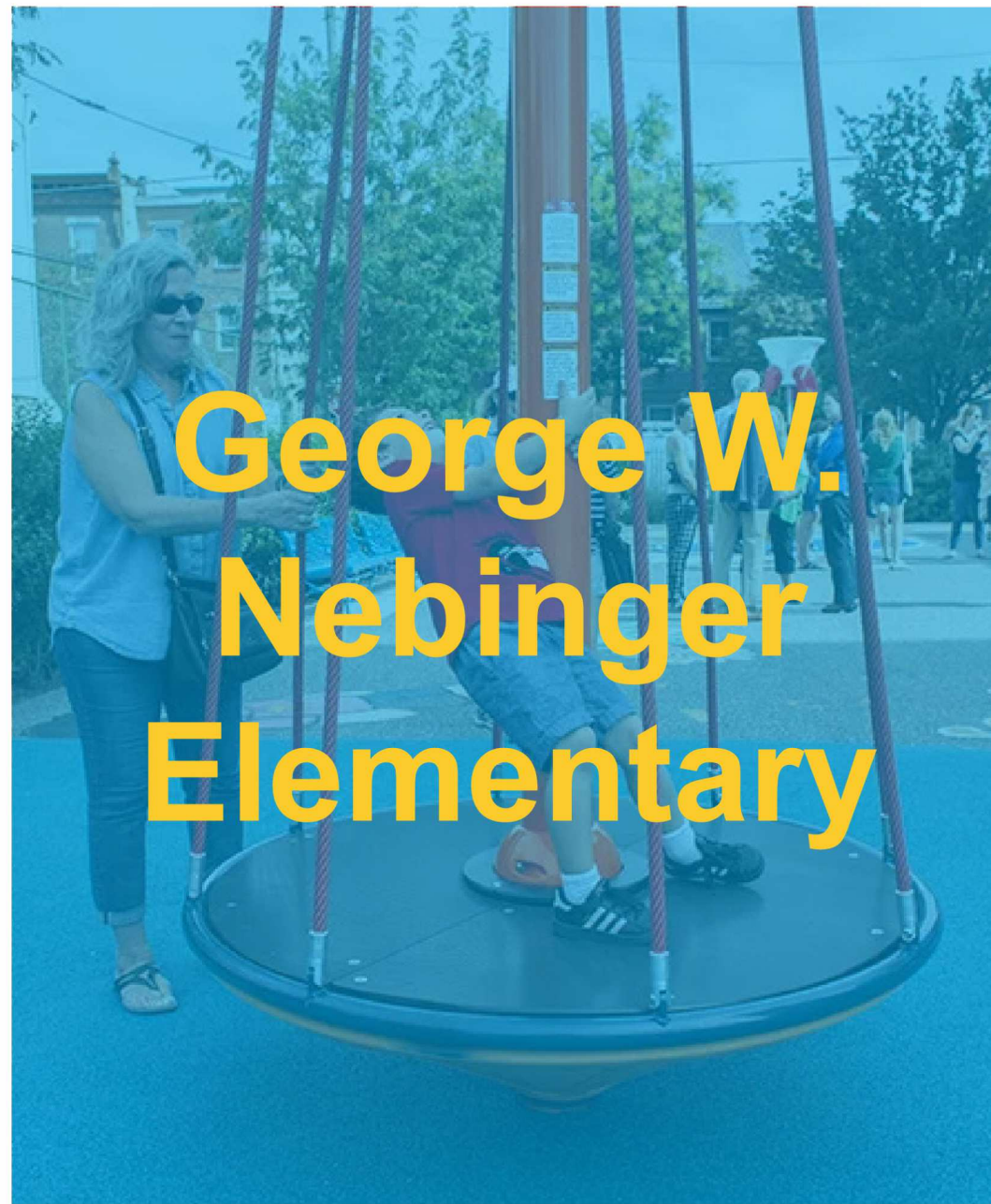
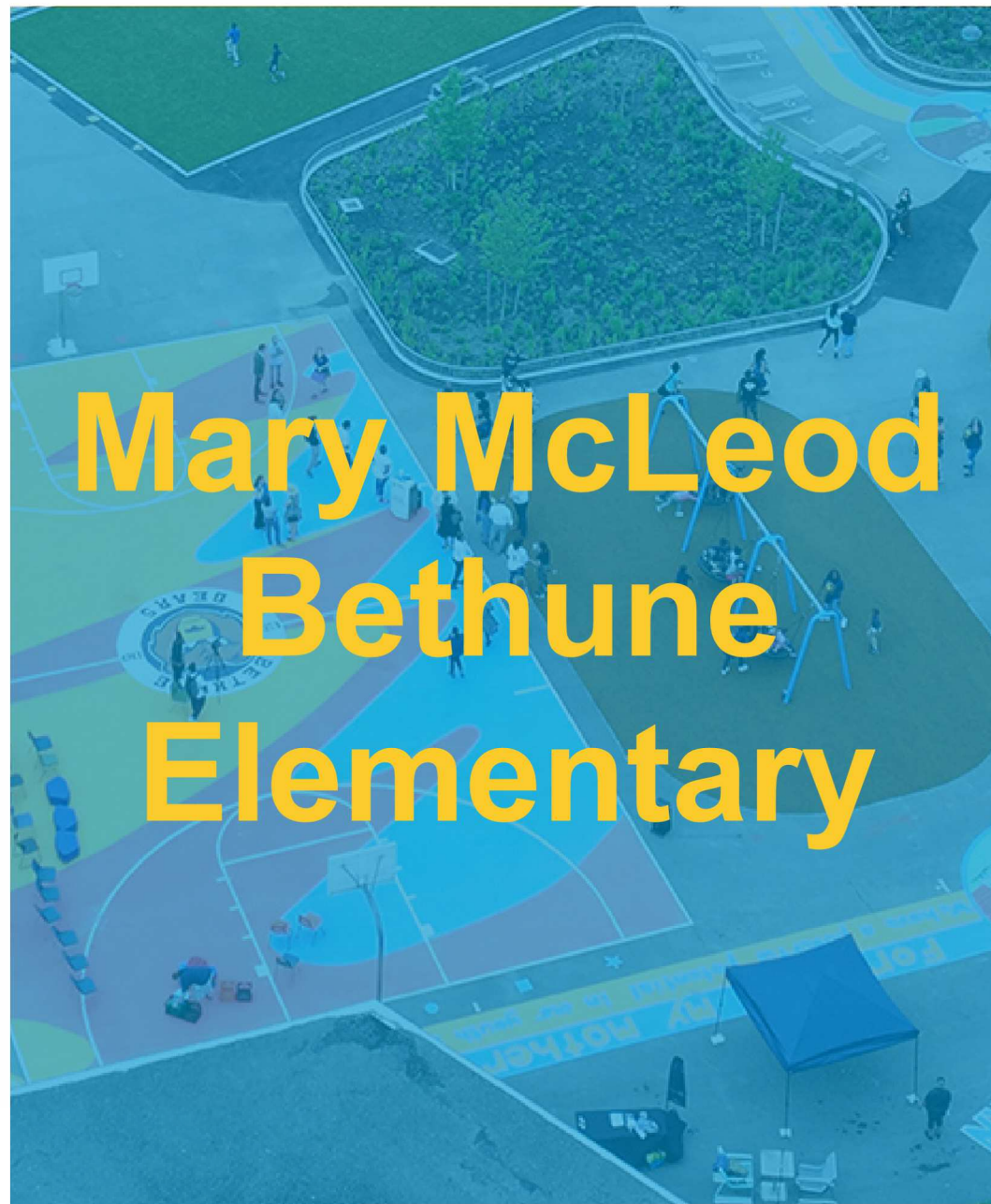
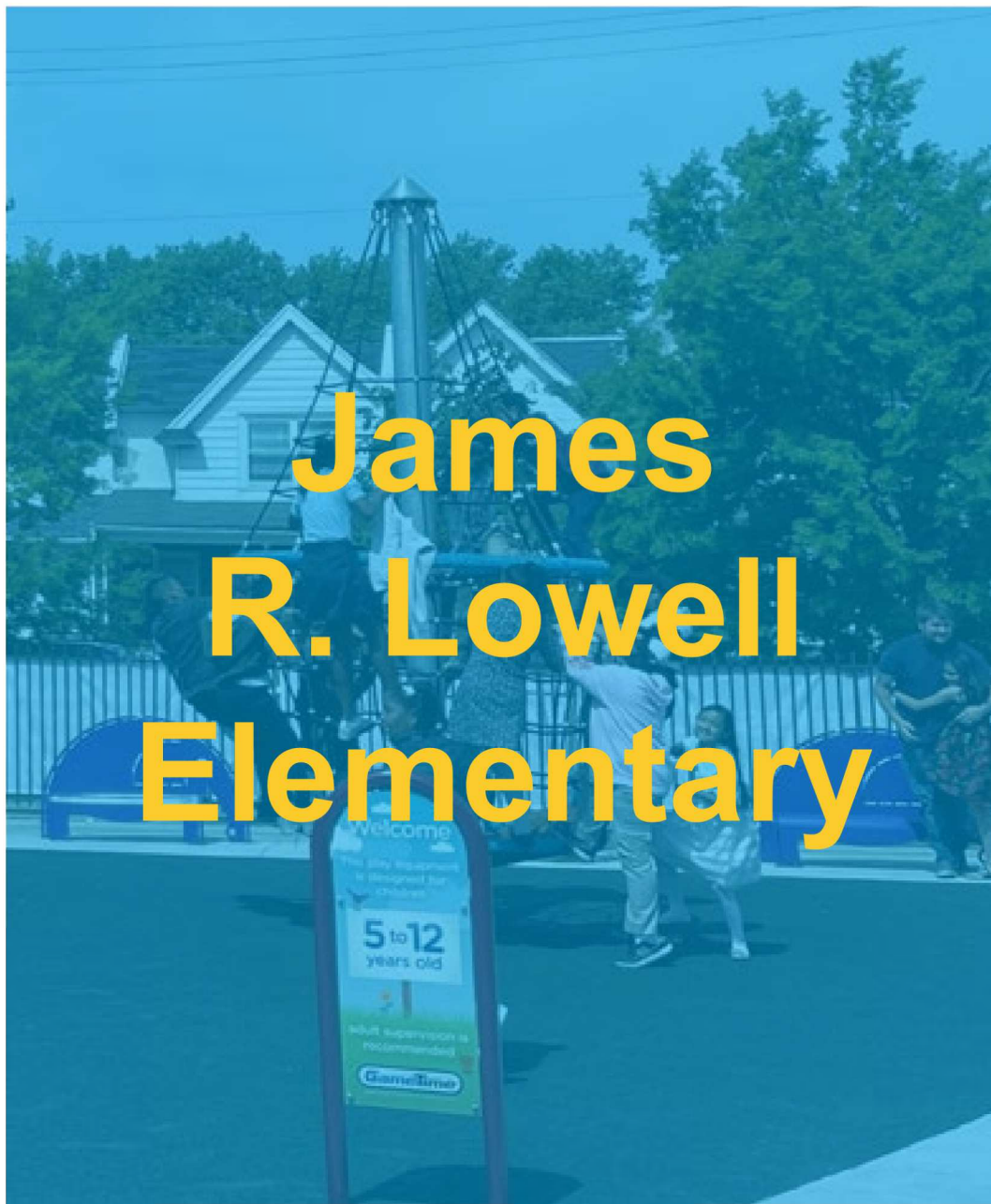
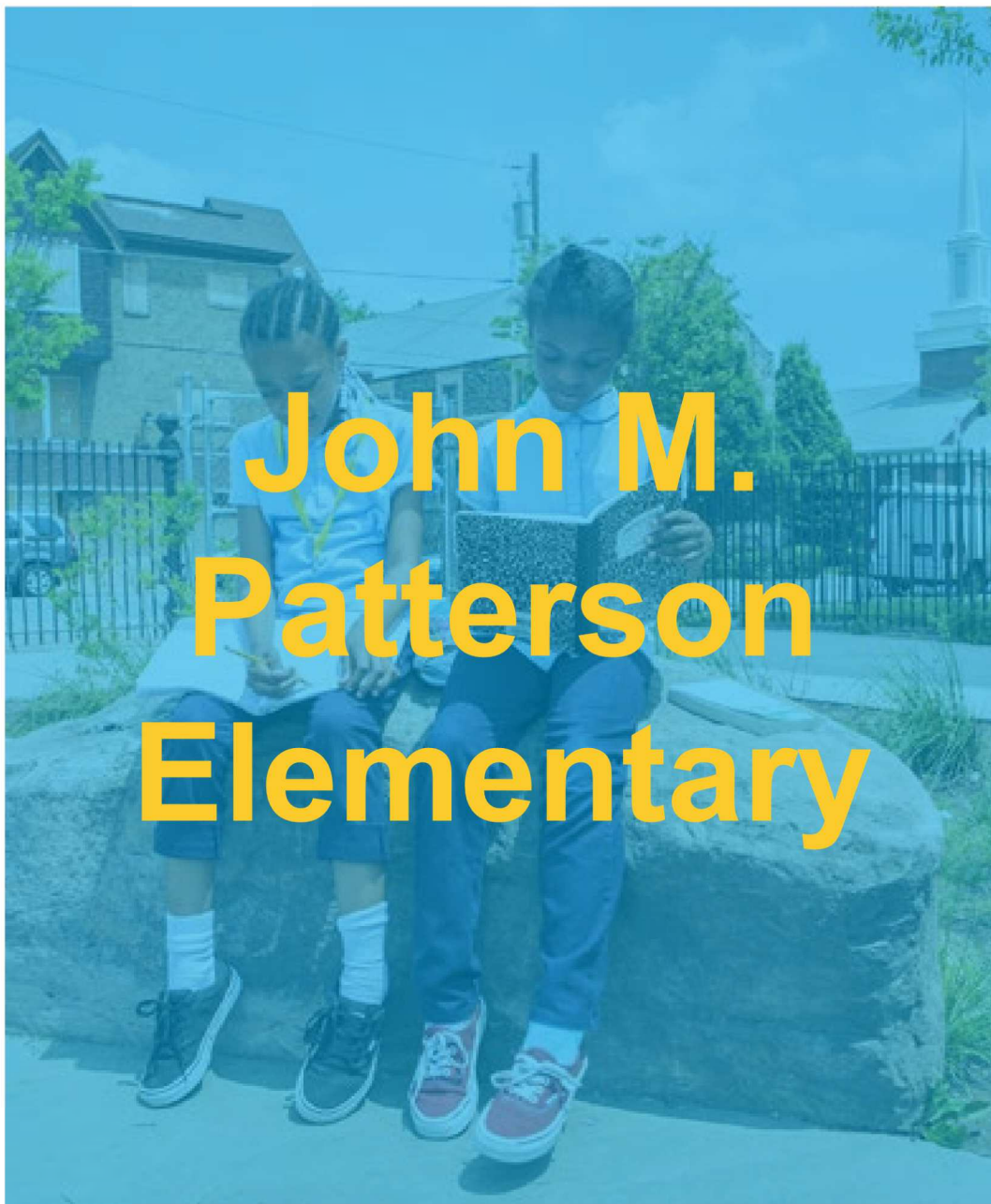
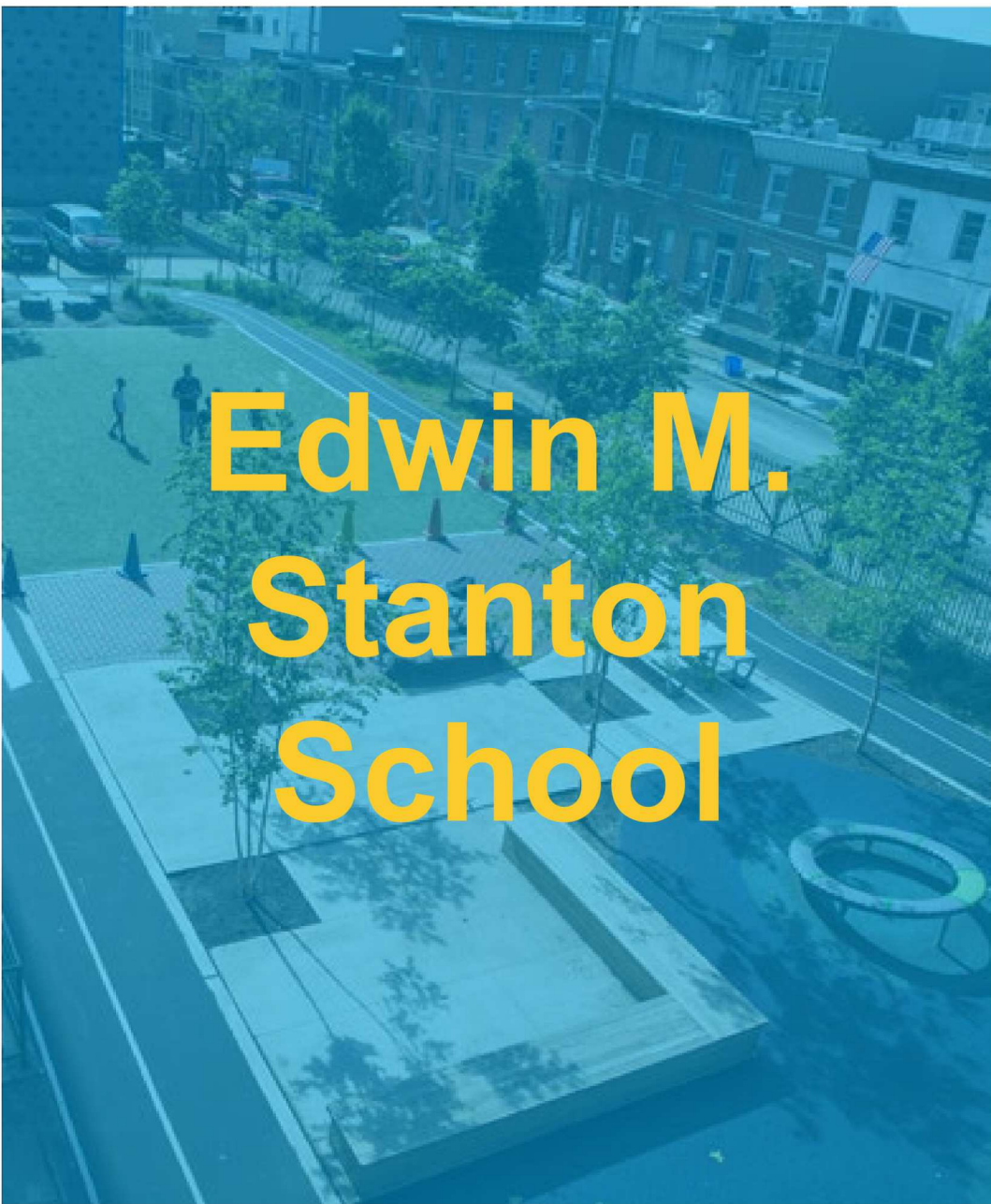
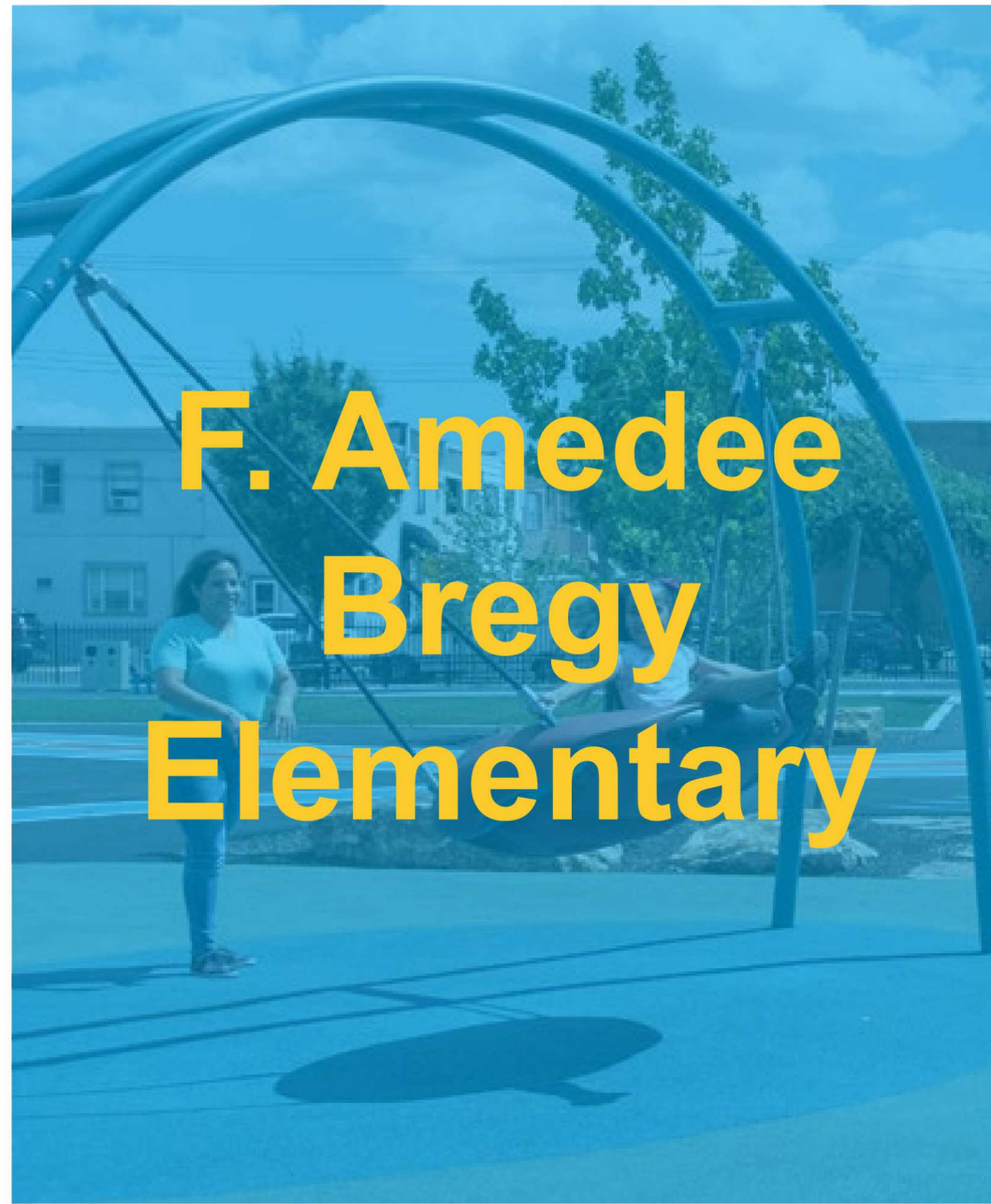
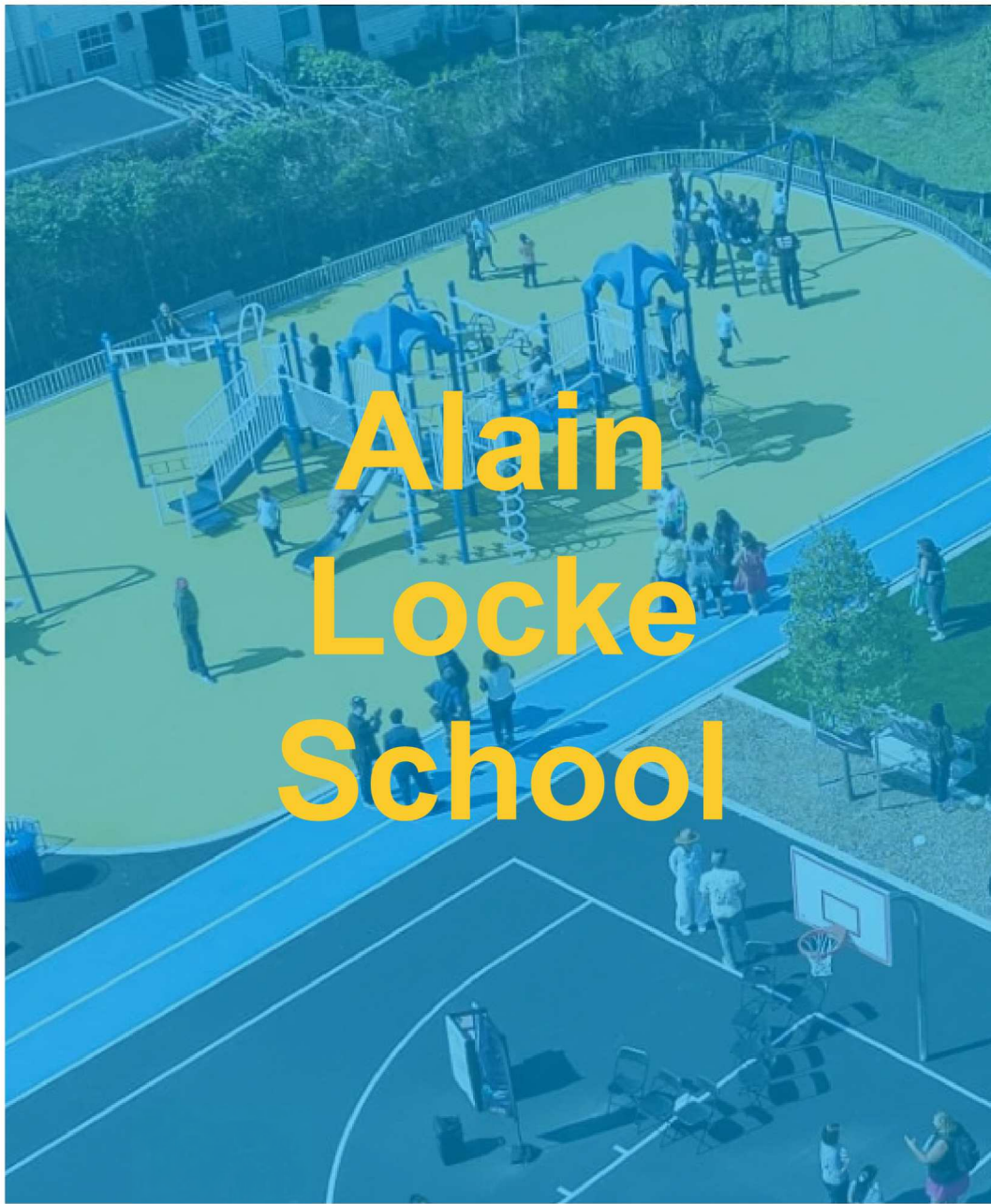
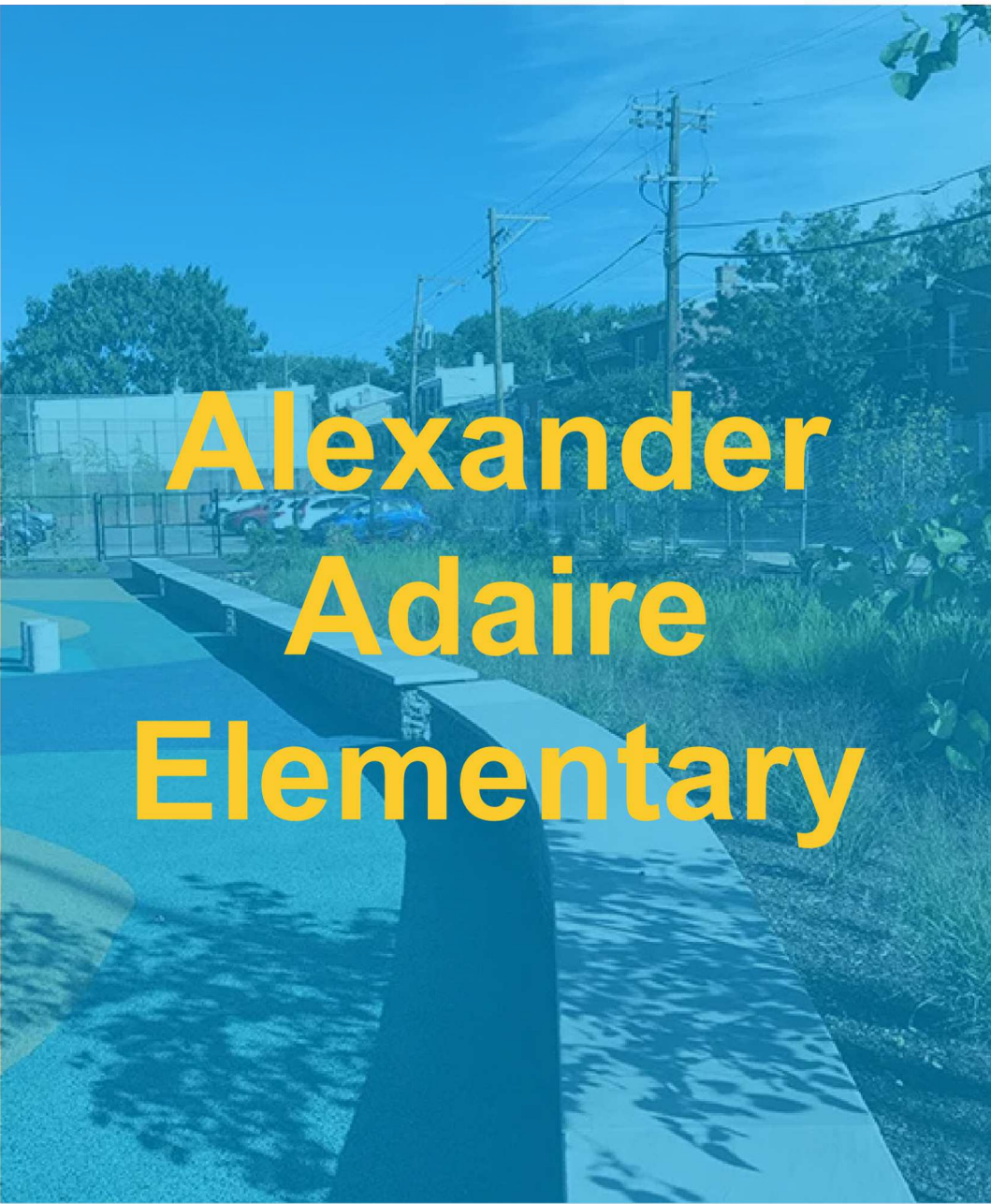
Cc: Elizabeth Class-Maldonado, TPL
Patricia Lee, TPL
Lindsay Stanislaw, GR



WEBSTER SCHOOLYARD

Ground Reconsidered





TPL Philadelphia projects



①



View of existing schoolyard from north-west

②

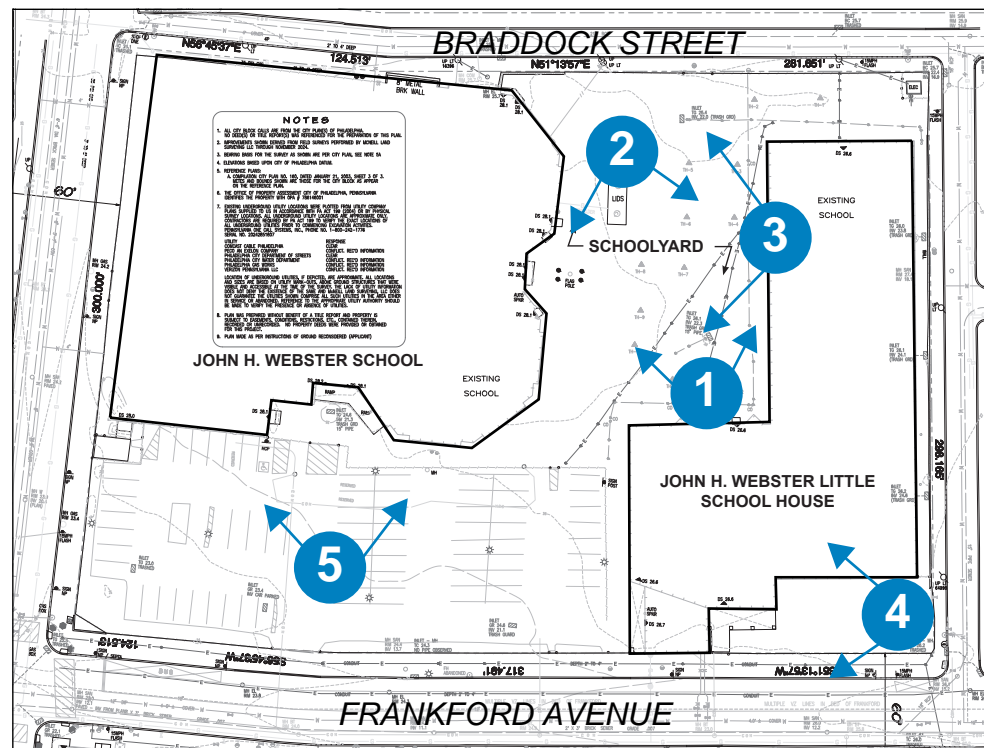


View of existing schoolyard from north-east

③



View of existing schoolyard from north



④



Existing view of Little School house play area

⑤



View of existing schoolyard packing lot

EXISTING SITE PHOTOS

WEBSTER SCHOOLYARD – TRUST FOR PUBLIC LAND

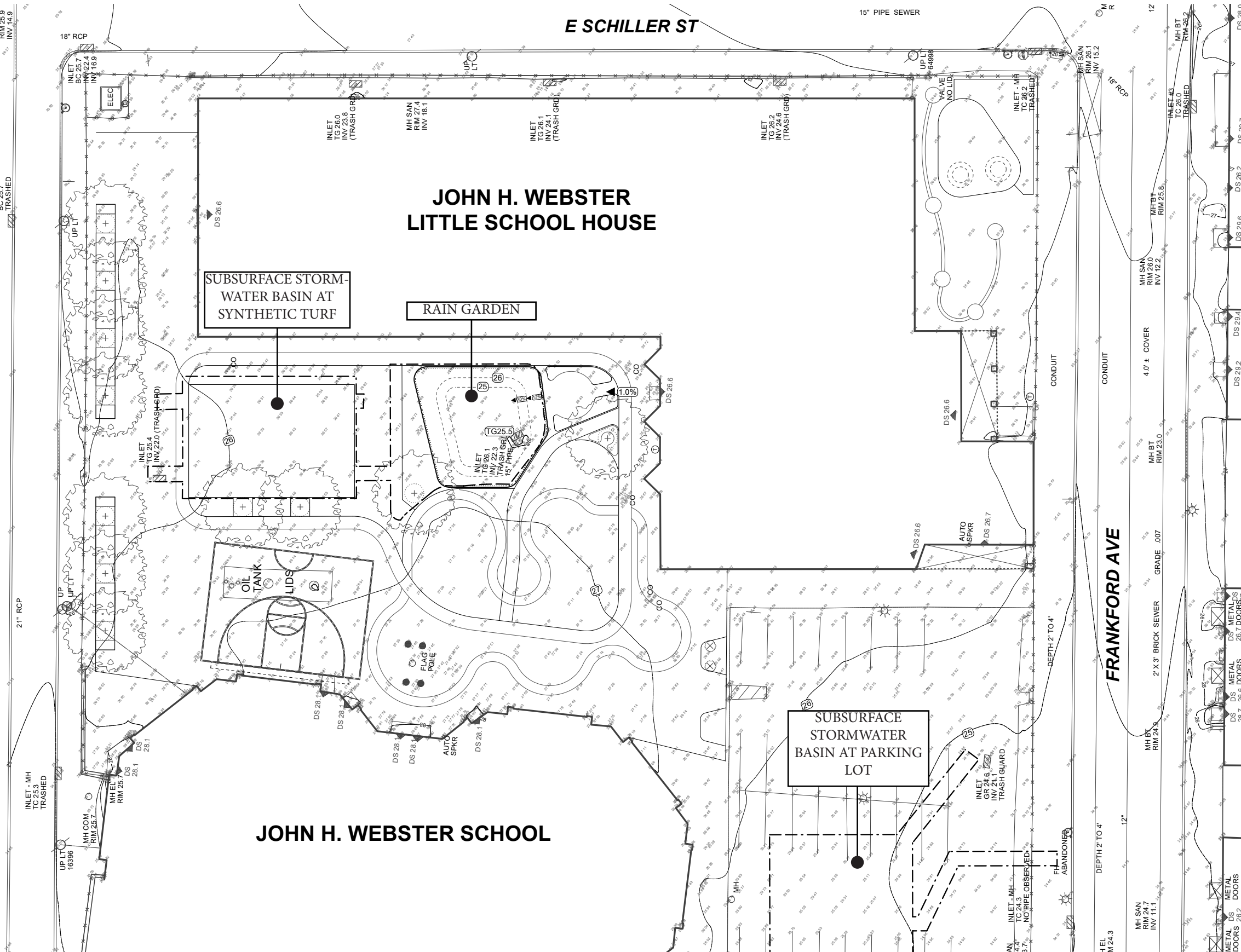
Ground Reconsidered



BRADDOCK ST

E SCHILLER ST

15" PIPE SEWER



GRADING LEGEND

- LIMIT OF WORK
- × 0.00 EXISTING SPOT ELEVATION
- +0.00 PROPOSED SPOT ELEVATION
- +TW0.00 TOP OF WALL
- +BW0.00 BOTTOM OF WALL
- +TW0.00 TOP OF STEP
- +BS0.00 BOTTOM OF STEP
- +HP0.00 HIGH POINT
- ◀0.0% PERCENT SLOPE
- @- CONTOUR
- V.I.F. VERIFY IN FIELD

GRADING NOTES

1. ANY DISCREPANCY BETWEEN FIELD CONDITIONS AND DOCUMENTED EXISTING OR PROPOSED CONDITIONS SHALL BE REPORTED TO OWNER IN WRITING.
2. ADJUST EXISTING AND PROPOSED UTILITIES TO MEET FINAL DESIGN CONDITIONS AS NECESSARY.
3. ADJUST TOPS OF ALL MANHOLE LIDS, EXISTING UTILITY STRUCTURES, ETC. TO MEET PROPOSED GRADES.
4. FINISH GRADES OF PAVEMENTS AND SOIL ALONG BOTTOM OF CURBS AND WALLS SHALL HAVE A CONSTANT SLOPE UNLESS INDICATED BY SPOT ELEVATIONS.

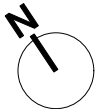
GRADING PLAN

WEBSTER SCHOOLYARD – TRUST FOR PUBLIC LAND

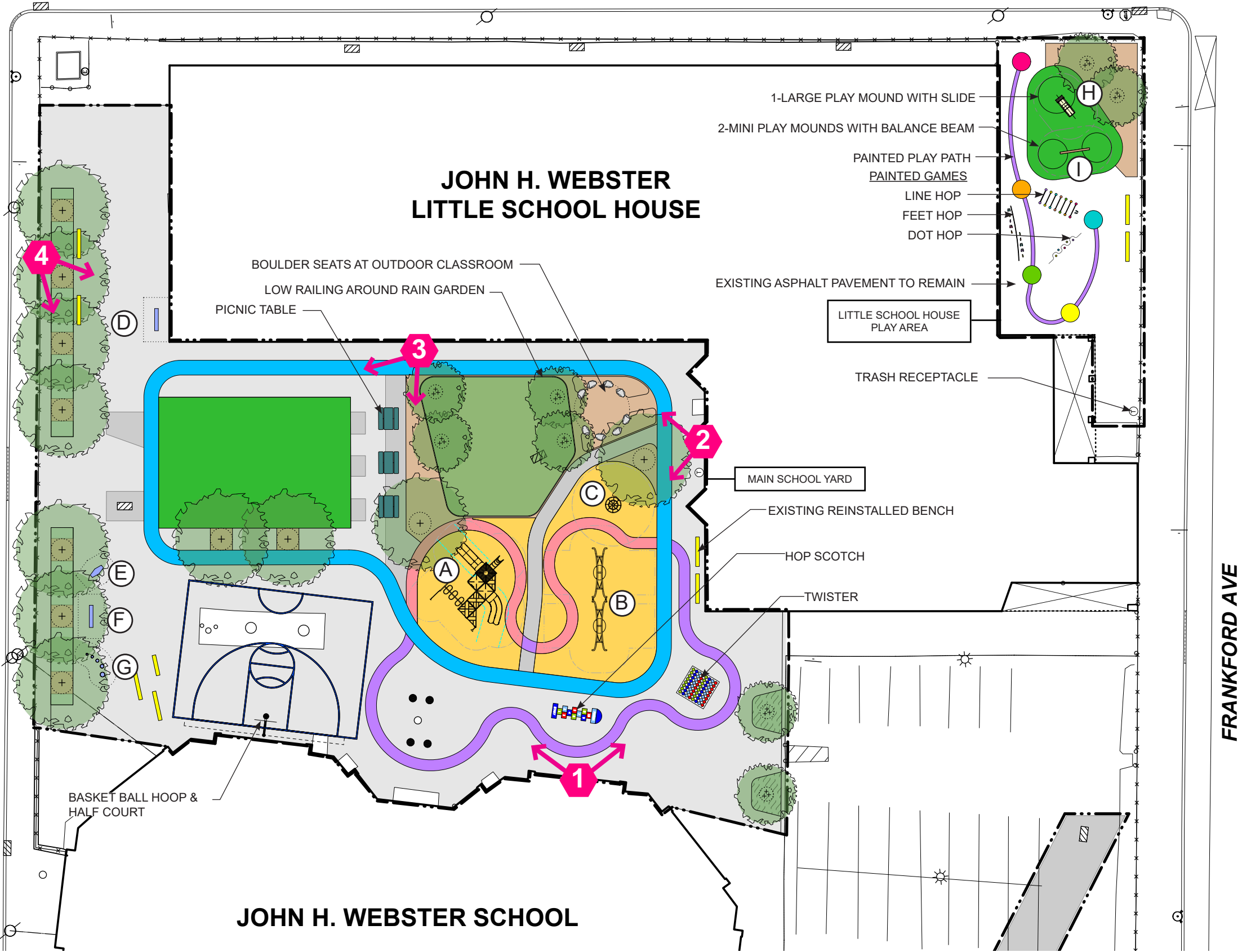
0 10 FT 20 FT



SCALE: 1" = 20'



E SCHILLER ST



MATERIALS LEGEND

- LIMIT OF WORK
- MILL & OVERLAY ASPHALT PAVEMENT
- NEW UNPAINTED ASPHALT PAVEMENT
- PAINTED PAVEMENT - RACING TRACK
- PAINTED PAVEMENT - SQUIGGLY TRACK
- SYNTHETIC TURF — SUITABLE FOR PLAYING FIELD, AS AVAILABLE FROM FOREVER LAWN
- PLAY SAFETY SURFACE, COLOR 1 — PLAYBOUND POURED-IN PLACE RUBBER SURFACING, AS AVAILABLE FROM SURFACE AMERICA
- PLAY SAFETY SURFACE, COLOR 2
- RAINGARDEN
- HARDWOOD MULCH — DOUBLE-SHREDDED, UNDYED, 3" DEPTH
- PLANTING BED
- CANOPY TREE — 3" - 3 1/2" CALIPER, B&B, SPECIMAN QUALITY
- UNDERSTORY TREE — 10'-12' HT, MULTI-STEM, B&B, SPECIMAN QUALITY

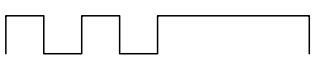
PLAY STRUCTURES

KEY	QUANTITY	DESCRIPTION	PRODUCT DATA
A	1	PLAYSENSE 402	MFR: LANDSCAPE STRUCTURES MODEL #: 1005 FINISH: TBD
B	1	OODLE SWING - DOUBLE	MFR: LANDSCAPE STRUCTURES MODEL #: 6597 FINISH: TBD
C	1	TOPSY TURNY SPINNER	MFR: LANDSCAPE STRUCTURES MODEL #: 6159 FINISH: TBD
D	1	SYMBOL COMMUNICATION SIGN	MFR: LANDSCAPE STRUCTURES MODEL #: 8569 FINISH: TBD
E	1	RHAPSODY ANIMATO METALLOPHONE	MFR: LANDSCAPE STRUCTURES MODEL #: 214438 FINISH: TBD
F	1	RHAPSODY GRANDISO CHIMES	MFR: LANDSCAPE STRUCTURES MODEL #: 214442 FINISH: TBD
G	1	RHAPSODY KETTLE DRUM	MFR: LANDSCAPE STRUCTURES MODEL #: 214445 FINISH: TBD
	2	RHAPSODY GOBLET DRUM	MFR: LANDSCAPE STRUCTURES MODEL #: 214443 FINISH: TBD
	2	RHAPSODY KUNDU DRUM	MFR: LANDSCAPE STRUCTURES MODEL #: 214444 FINISH: TBD
H	1	PLAY MOUNDS WITH BALANCE BEAM	FOREVER LAWN
I	1	PLAY MOUNDS WITH SLIDE	FOREVER LAWN

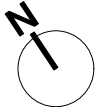
SITE PLAN ENLARGEMENT

WEBSTER SCHOOLYARD – TRUST FOR PUBLIC LAND

0 10 FT 20 FT



SCALE: 1" = 20'





Ⓐ PlaySense Design 402



Ⓑ Oodle Swing - Double



Ⓒ Topsy Turny



Ⓓ Symbol Communication Sign



Rhapsody Music Elements



Ⓗ PLAY MOUND WITH SLIDE



Ⓘ PLAY MOUND WITH BALANCE BEAM

PLAY STRUCTURES

WEBSTER SCHOOLYARD – TRUST FOR PUBLIC LAND



Picnic Table



Existing Reinstalled Bench



Trash and Recycling Receptacle

SITE FURNISHINGS

WEBSTER SCHOOLYARD – TRUST FOR PUBLIC LAND

Ground Reconsidered



BRADDOCK ST

E SCHILLER ST

FRANKFORD AVE

JOHN H. WEBSTER
LITTLE SCHOOL HOUSE

JOHN H. WEBSTER SCHOOL

PLANTING LEGEND

- LIMIT OF WORK**
- PROPOSED CANOPY TREE** — 3" - 3 1/2" CALIPER, B&B, SPECIMAN QUALITY, EXCEPT WHERE NOTED AS 4" CALIPER
- PROPOSED UNDERSTORY** — 10'-12' HT, MULTI-STEM, TREE B&B, SPECIMAN QUALITY
- SHRUBS** — #5 CONT, 4' O.C.
- SHRUBS** — #3 CONT, 3' O.C.
- HARDWOOD MULCH** — DOUBLE-SHREDDED, UNDYED, 3" DEPTH
- RAIN GARDEN**
- PLANT BED**

NOTES:

1. RAIN GARDEN PLANTING AREA AND ENTRY ORNAMENTAL PLANT BEDS: TO INCLUDE SHRUBS AS SHOWN ON PLAN AND ASSUME REMAINING PLANTING AREAS TO HAVE:
- 30% PERENNIALS, #2 CONT, 18" O.C.
- 20% GROUNDCOVER #1 CONT, 12" O.C.
2. PLANT BEDS AT OUTDOOR CLASSROOM AREA, AND TREE TRENCHES TO INCLUDE SHRUBS ONLY.
3. ALL PLANTING AREAS TO ASSUME:
- 24" DEPTH PLANTING SOIL THROUGHOUT
- 2" DEPTH DOUBLE SHREDDED HARDWOOD MULCH
4. 36" DEPTH PLANTING SOIL AT ALL TREE LOCATIONS, DTL 1/L610

Qty	Id	Botanical Name	Common Name	Size	Spacing	Notes
Canopy Trees						
7	NS	<i>Nyssa sylvatica 'Wildfire'</i>	Wildfire Blackgum	3" - 3 1/2" cal.	As Shown	Specimen Quality, B&B
2	TC	<i>Tilia cordata</i>	Little Leaf Linden	3" - 3 1/2" cal.	As Shown	Specimen Quality, B&B
2	TD	<i>Taxodium distichum</i>	Bald Cypress	3" - 3 1/2" cal.	As Shown	Specimen Quality, B&B
Understory Trees						
4	AGa	<i>Amelanchier grandiflora 'Autumn Brilliance'</i>	Autumn Brilliance Serviceberry	10' - 12' ht.	As Shown	Specimen Quality, B&B, Multistem
4	CCa	<i>Cercis canadensis</i>	Eastern Redbud	10' - 12' ht.	As Shown	Specimen Quality, B&B, Multistem

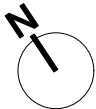
PLANTING PLAN

WEBSTER SCHOOLYARD – TRUST FOR PUBLIC LAND

0 10 FT 20 FT



SCALE: 1" = 20'





Taxodium distichum
Bald cypress



Tilia americana
American Linden



Nyssa sylvatica
Black Gum



Cercis canadensis
Eastern Redbud



Amelanchier x 'Autumn Brilliance'
Serviceberry

Trees



Fothergilla gardenii
Dwarf fothergilla



Rhus aromatica 'Gro-Low'
St John's Wort



Juniperus horizontalis 'Bar Harbor'
Creeping juniper

Shrubs

PLANTING PALETTE - TREES AND SHRUBS

WEBSTER SCHOOLYARD – TRUST FOR PUBLIC LAND

Ground Reconsidered





Acorus gramineus
Japanese sweet flag



Carex vulpinoidea
American fox-sedge



Deschampsia cespitosa 'Goldtau'
Tufted Hair Grass



Sedum rupestre
Reflexed stonecrop



Hypericum kalmianum 'Ames'
Kalm's St. John's wort



Cornus sericea 'Kelsey'
Kelsey Dogwood



Packera aurea
Golden Ragwort



Iris versicolor
Blue flag



Pycnanthemum muticum
Clustered mountain mint



Rudbeckia triloba
Brown-Eyed Susan

PLANTING PALETTE - RAIN GARDEN

WEBSTER SCHOOLYARD – TRUST FOR PUBLIC LAND

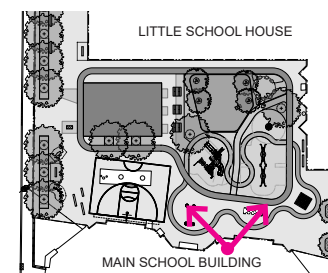
Ground Reconsidered





VIEW 1: Playground, Rain garden and Outdoor classroom

WEBSTER SCHOOLYARD – TRUST FOR PUBLIC LAND



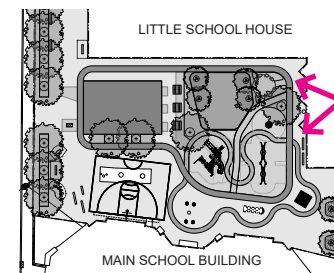
Ground Reconsidered





VIEW 2: View looking south-west from outdoor classroom

WEBSTER SCHOOLYARD – TRUST FOR PUBLIC LAND



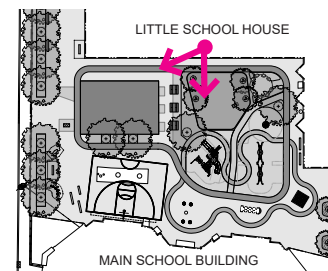
Ground Reconsidered





VIEW 3: View from North of Schoolyard looking south

WEBSTER SCHOOLYARD – TRUST FOR PUBLIC LAND



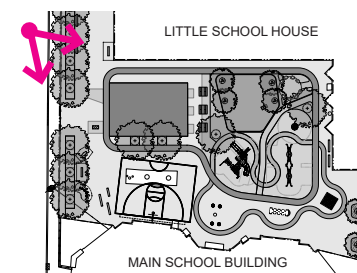
Ground Reconsidered





VIEW 4: View looking south- east of schoolyard

WEBSTER SCHOOLYARD – TRUST FOR PUBLIC LAND



Ground Reconsidered

