

Tina Arcuri/Coastal Sign Services Inc.

5374 Greggs Landing
N Charleston, SC 29420
tina@coastalsignservices.com
(843)604-4114

8/20/2025

Philadelphia Art Commission
One Parkway Building
1515 Arch Street, 13th Floor
Philadelphia, PA 19102
artcommission@phila.gov
(215)683-4636

Re: Application for Sign Review – 2545 Downtown Philly

Dear Commissioners,

I am submitting this application for review and approval of signage at **2545 Downtown Philly**. Please find below the required information regarding the proposed signage:

1. (1) 24"x23'-8" Individual Channel Letterset reading "Ross Dress For Less"
 - White acrylic face
 - 8" aluminum return with blue acrylic
 - 2" White trimcap
 2. (1) 12"x 48" under canopy reading "Ross"
 - 2"x2"x3/16" aluminum cross member
 - 12"x48"x10" double faced aluminum with solar grade white lexan faces
- **Decision Recipient:**
Tina Arcuri/Coastal Sign Services Inc.
5374 Greggs Landing
N Charleston, SC 29420
tina@coastalsignservices.com

- **Contact Person for Application:**
Tina Arcuri/Coastal Sign Services Inc.
5374 Greggs Landing
N Charleston, SC 29420
tina@coastalsignservices.com

Please do not hesitate to reach out if any additional documentation, site photographs, or drawings are needed to complete your review.

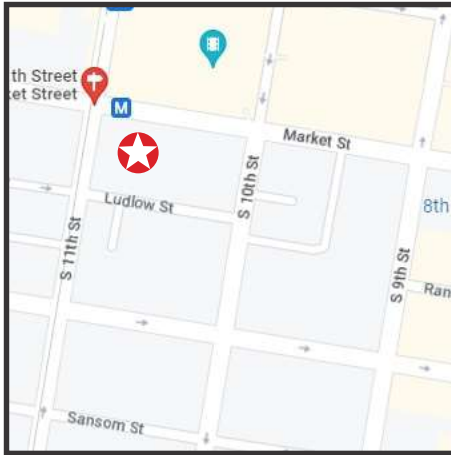
Thank you for your time and consideration.

Sincerely,

Tina Arcuri

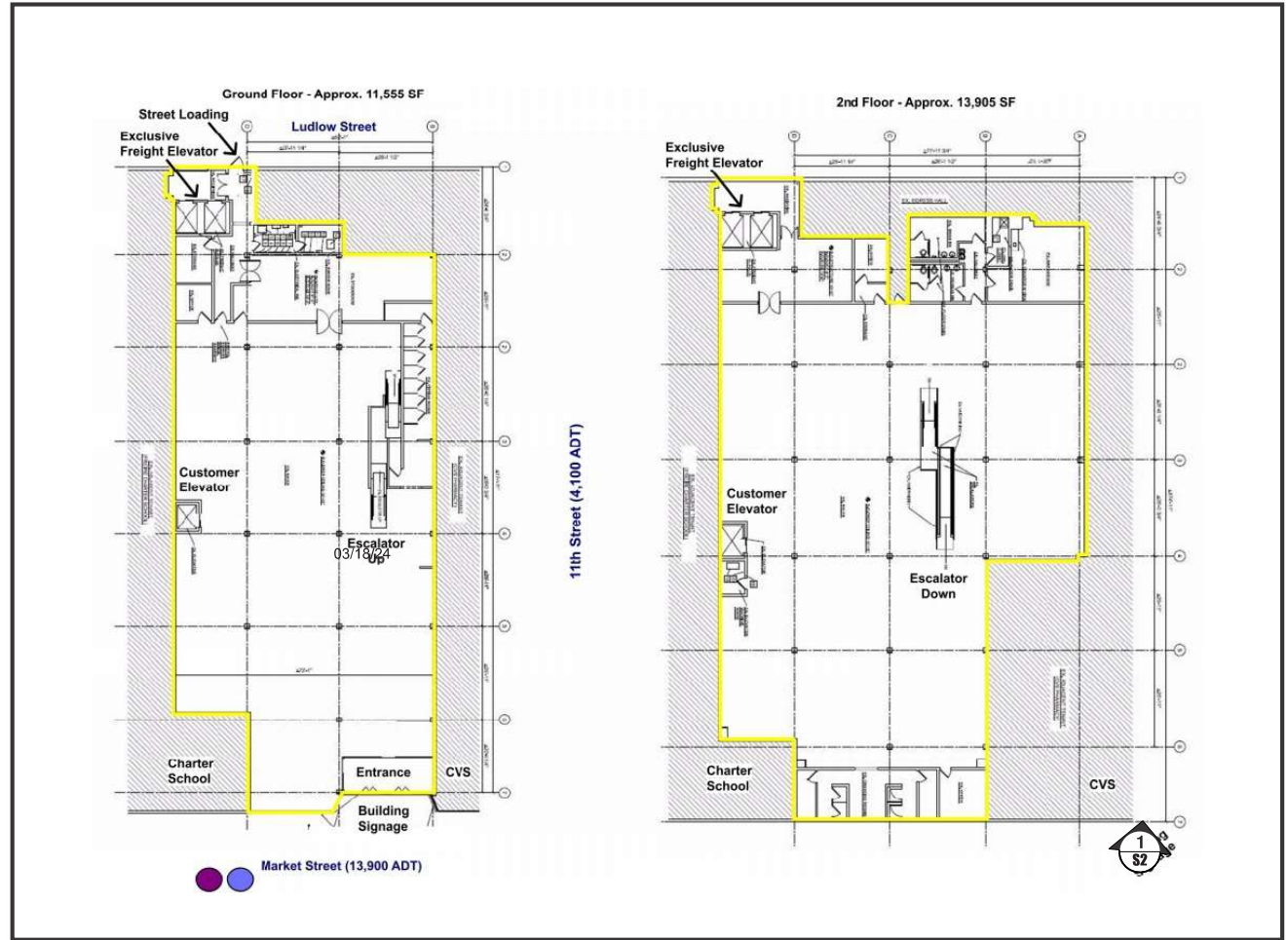
Agent on behalf of Ross Stores Inc.

Exhibit J Drawing



VICINITY MAP

NOT TO SCALE



SITE PLAN

NOT TO SCALE

EXHIBIT

PAGE OF

The information contained herein is intended to express design intent only. This original design is the sole property of Blair Image Elements. It cannot be reproduced, copied or exhibited, in whole or in part, without first obtaining written consent from Blair Image Elements. Blair Image Elements is not responsible for dimensions or notes outside of Blair Scope of Work.

AD-RSS100561



blair
IMAGE ELEMENTS

ROSS
DRESS FOR LESS

#2545 Downtown Philadelphia

1044 Market Street
SEC Market Street & 11th Street
Philadelphia, PA 19107

drawn

02/11/25

RB-E

SHEET

K

NOTES:

ROSS CONTRACTOR TO PROVIDE:

- ADEQUATE ACCESS BEHIND LOGO LETTER AND CABINET FOR INSTALLATION AND MAINTENANCE, PER ARTICLE 600 OF THE N.E.C.
- ONE (1) 20 AMP 120V ISOLATED SIGN CIRCUIT AND JUNCTION BOXES TO AREA BEHIND SIGN LETTERS CONNECTED TO THE ENERGY MANAGEMENT SYSTEM.
- AT LEAST 1/2" THICK PLYWOOD BACKING BEHIND ALL E.I.F.S. WALL SYSTEM FOR SIGN AND BANNER SUPPORT.

SIGN FASCIA TO BE FREE OF JOINTS & REVEALS BLUE FASCIA TO PROVIDE HIGH CONTRAST AND VISIBILITY FOR THE SIGN.

ALL COLORS ARE SUBJECT TO ROSS STORES, INC. REVIEW AND APPROVAL COLOR APPEARANCE MAY BE ALTERED BY PRINTING, SEE APPROVED FINA CONSTRUCTION DRAWINGS FOR COLOR SPECIFICATIONS.

IF ANY SIGNAGE PROPOSED IN THIS EXHIBIT IS ALTERED BY LOCAL GOVERNMENT AUTHORITIES, ROSS STORES INC. RESERVES THE RIGHT TO, AT NO COST, ADJUST ARCHITECTURAL FEATURES TO BEST ACCOMMODATE THE ALTERED SIGNAGE

(A) 24"H INDIVIDUAL "ROSS" PAN CHANNEL LETTER-LOK LOGO LETTERS:
FACES: WHITE ACRYLIC
RETURNS: 8"D ALUM. W/ BLUE ACRYLIC TRIM CAP: 2" WHITE
LETTER BACKS: ALUMINUM
LEDS: BLUE
QWIK MOD 3 (7100K)
MOUNTING: 1/4"-20 GALV. THRU BOLTS
PEG OFF: 1/2" SPACERS

(B) 12"H INDIVIDUAL "DFL" LOGO LETTERS:
ALL CALLOUTS SAME AS "ROSS" EXCEPT:
RETURNS: 5"D ALUM. W/ BLUE ACRYLIC TRIM CAP: 2" WHITE

(C) 12"H X 48"W X 10"D DOUBLE-FACE INTERNALLY ILLUMINATED UNDER-CANOPY SIGN, SEE SHEET UC FOR DETAILS.

(D) N/A

(E) N/A

1 SIGN FASCIA BY ROSS CONTRACTOR, SEE NOTES.

2 CLEAR ANODIZED ALUMINUM STOREFRONT & DOORS BY LAND LORD.

3 N/A

4 N/A

5 STORE HOURS; INCLUDES STORE HOURS, OPERATIONAL DECAL, EBT, GUARD & RESERVE LTR. 55 & OVER AND EXIT/ENTER DECALS. SEE SHEET SH FOR DETAILS.

6 N/A

7 N/A

8 N/A

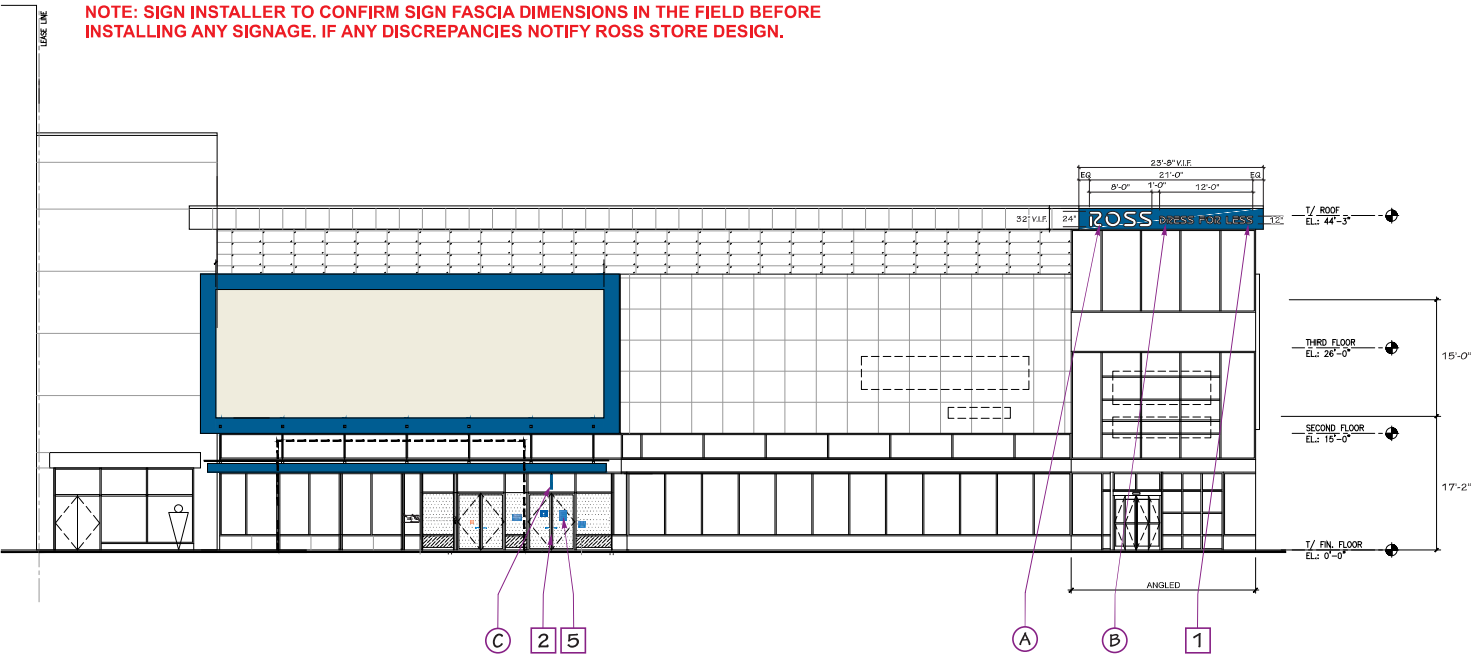
9 N/A

10 N/A

11 N/A

12 N/A

NOTE: SIGN INSTALLER TO CONFIRM SIGN FASCIA DIMENSIONS IN THE FIELD BEFORE INSTALLING ANY SIGNAGE. IF ANY DISCREPANCIES NOTIFY ROSS STORE DESIGN.



① STOREFRONT • SOUTH • MARKET ST. • ELEVATION
SCALE: 1/16"=1'-0"

100 SQFT	SIGN AREA ALLOWED: 100.00 S.F.	SIGN AREA USED: 38.29
ROSS DRESS FOR LESS		
ROSS DFL:	99.36	
UNDER CANOPY:	NA	
(2) WALL PLAQUES	NA	
TOTAL:	99.36	

The information contained herein is intended to express design intent only. This original design is the sole property of Blair Image Elements. It cannot be reproduced, copied or exhibited, in whole or in part, without first obtaining written consent from Blair Image Elements. Blair Image Elements is not responsible for dimensions or notes outside of Blair Scope of Work.

AD-RSS100561



blair
IMAGE ELEMENTS

ROSS
DRESS FOR LESS

#2545 Downtown Philadelphia
1044 Market Street
SEC Market Street & 11th Street
Philadelphia, PA 19107

drawn 02/11/25

RB-E

SHEET

S2

Note:
SEE SHEET S1 FOR UNDER-CANOPY SIGN LOCATION.

General Contractor to provide:

- ADEQUATE CANOPY STRUCTURE TO SUPPORT SIGN
- ACCESS ABOVE CEILING FOR SIGN INSTALLATION
- 120V PRIMARY ELECTRICAL SERVICE
- JUNCTION BOX WITHIN FIVE (5) FEET OF SIGN LOCATION CONNECTED TO ENERGY MANAGEMENT SYSTEM

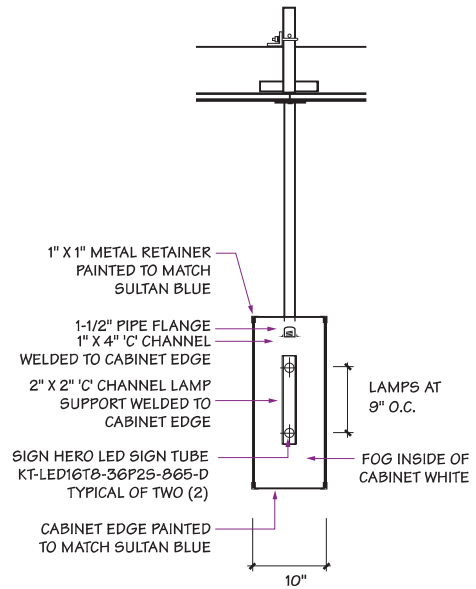
- (A) 2" x 2" x 3/16" ALUMINUM ANGLE CROSS MEMBER (AND WOOD BLOCKING IF NECESSARY) ANCHORED TO CANOPY JOISTS.
- (B) 2" DIA. HOLE FOR PIPE SUPPORTS; FASTEN PIPES TO ANGLE CROSS MEMBER WITH U-BOLT ASSEMBLIES AND SET SCREWS
- (C) 4" DIA X 1/8" THICK ESCUTCHEON PLATE AT CEILING; SECURE WITH 2 SCREWS, PRIME AND PAINT PLATES AND SCREW HEADS TO MATCH CEILING
- (D) 1 1/2" DIA. (2" O.D.) GALVANIZED STEEL PIPE SUPPORTS (TYPICAL OF TWO)
- (E) DISCONNECT SWITCH; INSTALL CABINET SO THAT SWITCH AND U.L. LABEL FACE STORE
- (F) CABINET: 12" X 48" X 10" DOUBLE-FACED ALUMINUM PRIMED W/ ZINC CHROMATE; CABINET EDGE AND 1" RETAINERS PAINTED TO MATCH PANTONE 286C BLUE
- (G) 1/4" DIA. DRAIN HOLE AT BOTTOM OF CABINET (TYP.)
- (H) WEATHERPROOF SILICONE SEALANT AROUND PIPE PENETRATIONS INTO CABINET (TYP.)
- (I) FACES: 3/16" L732B SOLAR GRADE WHITE LEXAN FACE WITH 9 1/4" H "ROSS" COPY AND 3/4" WHITE OUTLINE REVERSED OUT OF 3M 3630-157 SULTAN BLUE TRANSLUCENT VINYL FILM OVERLAY
- (J) KEYSTONE 6500K SIGN HERO LED SIGN TUBE KT-LED16T8-36P25-865-D. TYPICAL OF TWO (2)
- (K) UL LABEL

Fabricator to provide:

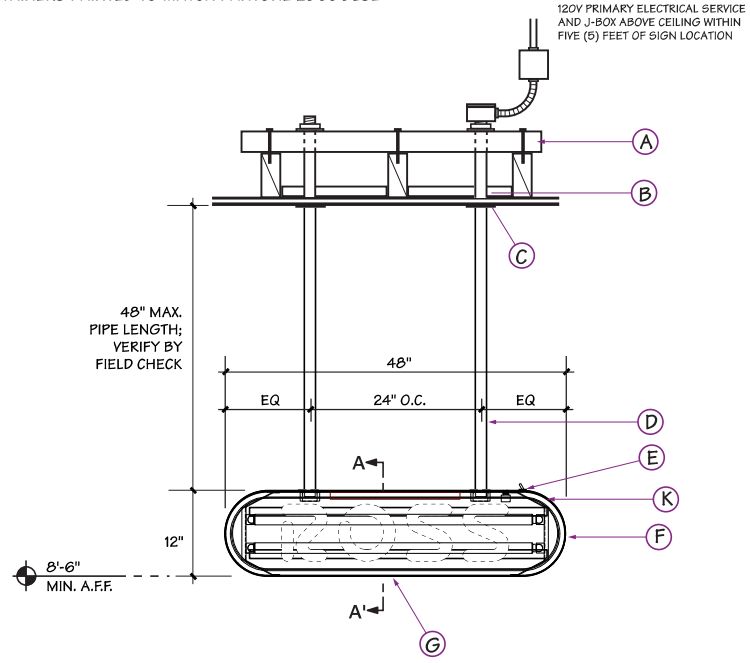
- ONE (1) DOUBLE-FACE UNDER-CANOPY SIGN CABINET COMPLETE WITH FACES, DECORATION, LAMPS, BALLAST, DRAIN HOLE, DISCONNECT SWITCH AND UL LABEL
- TWO (2) 5'-0" LENGTHS OF 1 1/2" PIPE, THREADED AT ONE END TO THREAD INTO PIPE-FLANGES INSIDE CABINET, PRIMED AND PAINTED TO MATCH SHERWIN WILLIAMS SW 6385 DOVER WHITE**
- ONE (1) 4'-0" LENGTH OF 2" X 2" X 3/16" ALUMINUM ANGLE
- TWO (2) 1/4" DIA. U-BOLT ASSEMBLIES - TO FIT 1 1/2" PIPE
- TWO (2) 4" DIA. X 1/8" ALUMINUM ESCUTCHEON PLATES AND (4) #10 X 1 1/4" FLAT-HEAD SCREWS. PLATES DRILLED THROUGH FOR 1 1/2" PIPE AND COUNTER-SUNK FOR SCREWS PLATES AND SCREWS PRIMED AND PAINTED TO MATCH SHERWIN WILLIAMS SW 6385 DOVER WHITE**

Installer to provide:

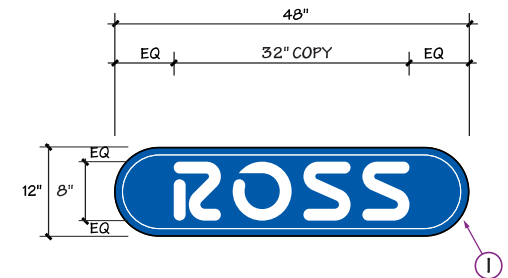
- LENGTHS OF FLEXIBLE CONDUIT AND ELECTRICAL WIRE
- ADDITIONAL BLOCKING ABOVE CEILING AS NECESSARY TO INSURE ADEQUATE STRUCTURE FOR SIGN ATTACHMENT
- WEATHER-PROOF CLEAR SILICONE SEALANT
- PAINT FOR PIPES AND ESCUTCHEON PLATES TO MATCH COLOR OF CEILING **ONLY IF DIFFERENT FROM PRE-FINISHED SHERWIN WILLIAMS SW 6385 DOVER WHITE COLOR



③ SECTION A-A'



② D/F UNDER-CANOPY FRAMING ELEVATION



① D/F UNDER-CANOPY FACE DETAIL



Jefferson Health
Honickman Center

ROSS DRESS FOR LESS
OPENING SOON
ROSS DRESS FOR LESS NOW HIRING
apply @ www.rossstores.com

CVS pharmacy
groceries

Freire Charter School

STATION
CLOSED

MRCsigns

Atec

CVS
pharmacy



Jefferson Health
Honickman Center

ROSS DRESS
FOR LESS

OPENING SOON

NOW HIRING

CVS pharmacy
grocery

Jefferson Health
Honickman Center

ROSS DRESS
FOR LESS

CVS pharmacy
grocery

Frederick Charter School

STATION
CLOSED