

Attn: Philadelphia Art Commission  
artcommission@phila.gov  
1515 Arch St., 13th Floor  
Philadelphia, PA 19102

**July 30, 2025**

**Re: Art Commission Plan Review  
Overbrook Elementary Schoolyard Improvements  
6201-6231 Lebanon Avenue  
Philadelphia, PA 19151**

Dear Philadelphia Art Commission Representative:

On behalf of the Trust for Public Land, AKRF is requesting conceptual approval of schoolyard improvements for Overbrook Elementary School, located at 6201-6231 Lebanon Ave. We respectfully request this review be placed on the Art Commission meeting agenda for August 13th, 2025.

The property is on the northwest corner of Lebanon Ave and North 62nd St. The existing school building is located in the southeast corner of the property and is anchored to the sidewalk on N 62nd St by the building's eastern side. The building's southern side contains gated lawn and access paths while the concrete paved schoolyard spans the western side of the building and contains several small pieces of play equipment and one tree to the south. An annex building, mature shade tree, and paved area used for parking lie to the north of the school building. The entire property is enclosed with picket fence along the right-of-way and chain link fence along the abutting residential and commercial properties. No improvements are proposed to the building or the existing lawn areas. The western half of the site is the subject of the proposed project.

The project proposes school yard improvements to revitalize and improve climate resiliency in a community space. Improvements include play equipment with safety surfacing, a quiet seating area, one (1) basketball half-court, two (2) multi-use artificial lawn areas, and a painted walking path that weaves throughout the yard and amenities. The project also includes greening consisting of a pollinator garden containing perennial plants and two additional trees sited at the southwest most corner of the property.

We will follow up with photographs, renderings, and supporting documents by Wednesday August 6th, 2025. Should you need any additional information or have any questions please do not hesitate to contact me at econfair@akrf.com.

Sincerely,



Edward Confair, PE, PLA  
Vice President, Landscape & Resiliency



# OVERBROOK ELEMENTARY SCHOOLYARD IMPROVEMENT

ART COMMISSION CONCEPT PLAN REVIEW



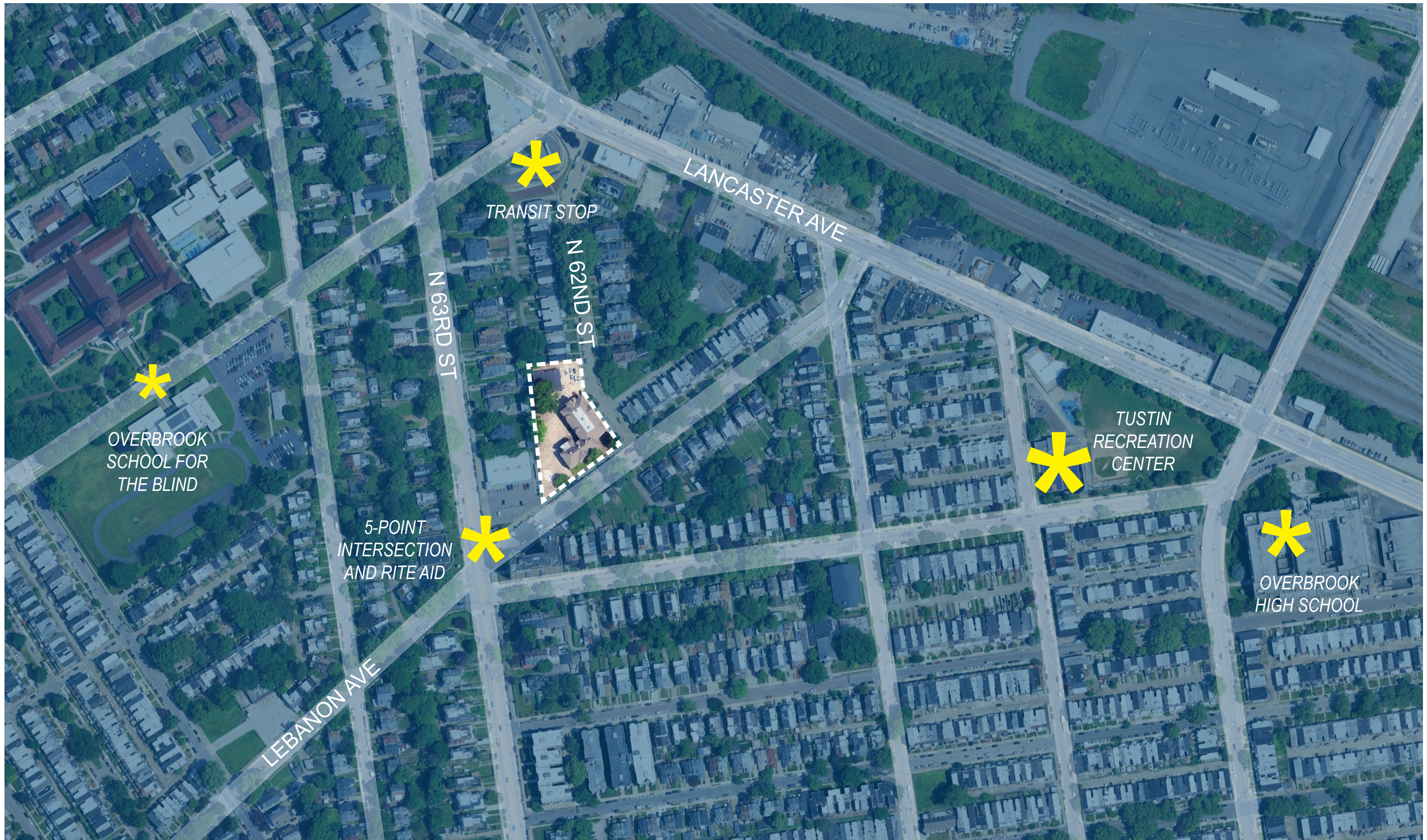
OVERBROOK ELEMENTARY SCHOOL



TRUST FOR  
PUBLIC  
LAND™

akrf





neighborhood context







photo locations







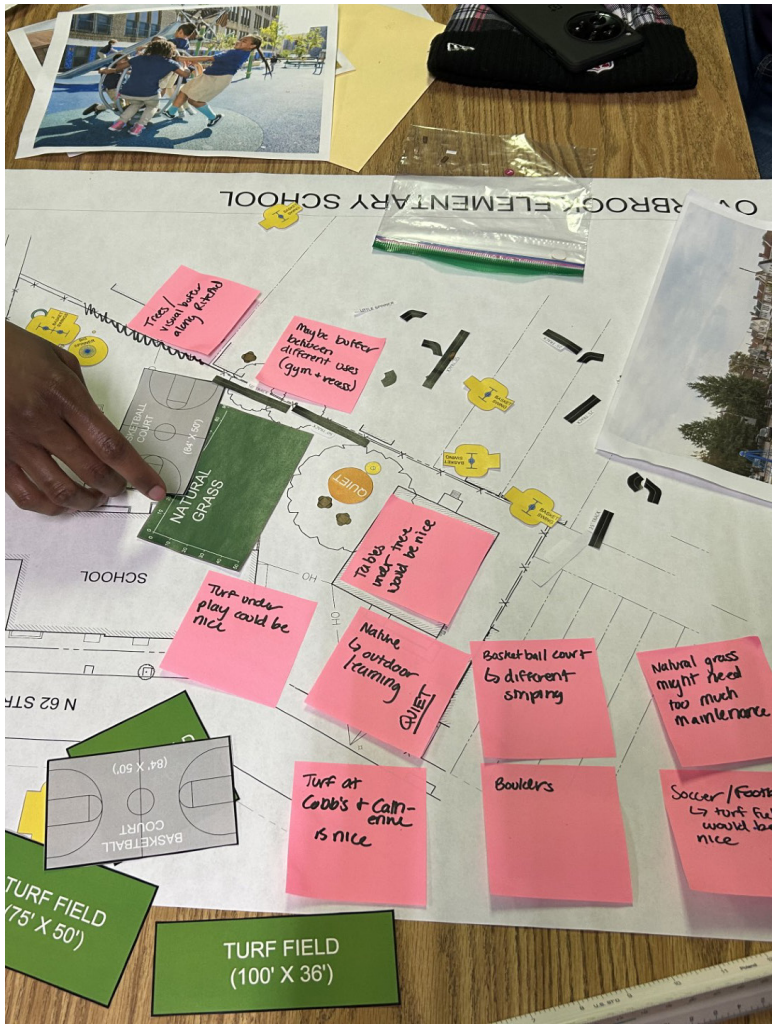
existing conditions



TRUST FOR  
PUBLIC  
LAND™

akrf





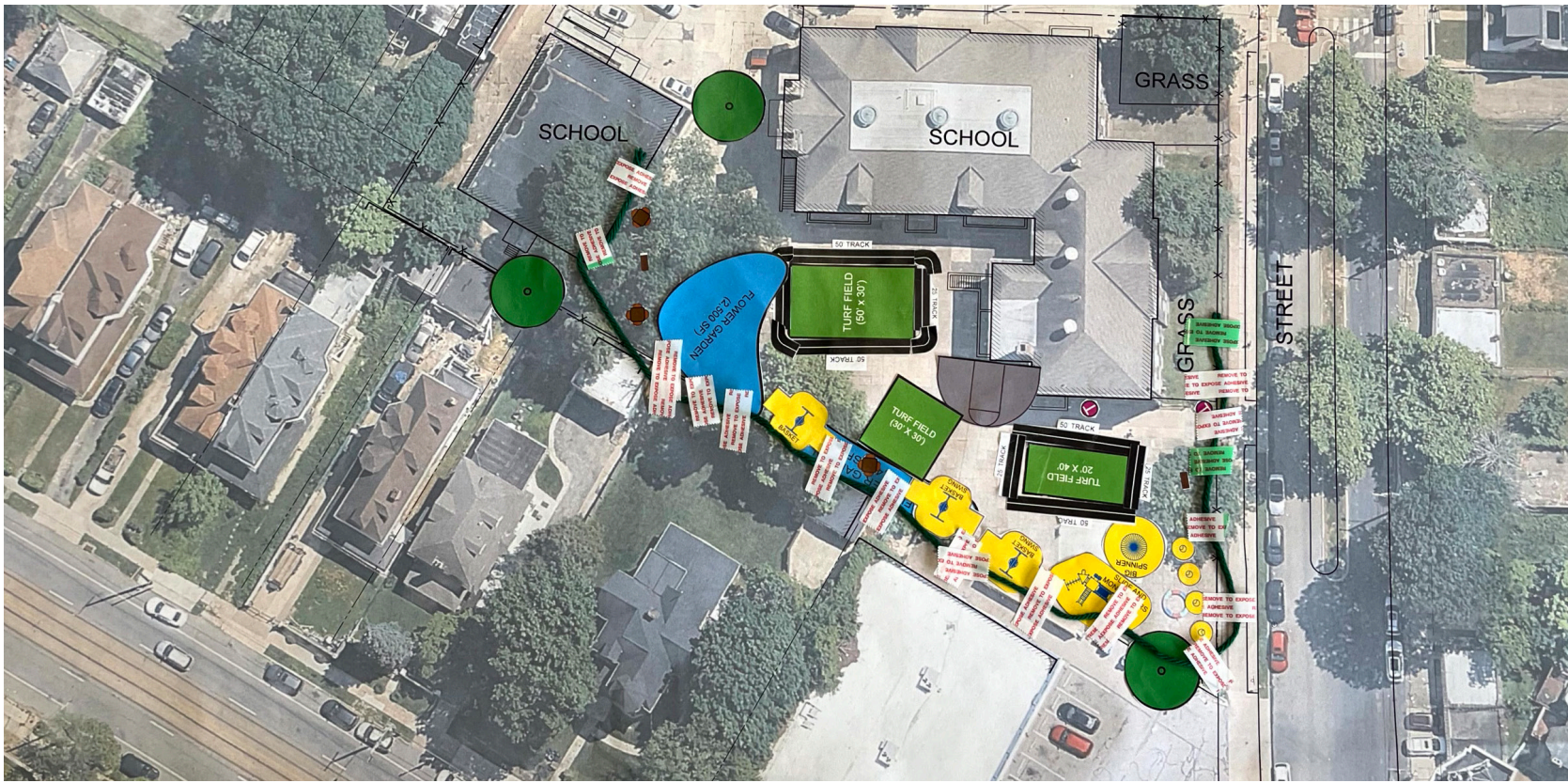
community engagement







OVERBROOK ELEMENTARY SCHOOL Layla Khloe King Javier TPL



student participatory design







## LEGEND

- ① Pollinator Garden
- ② Existing Site Access
- ③ 5' Wide Painted Athletic Track
- ④ Picnic Seating Area
- ⑤ Safety Surface
- ⑥ Single Basket Swing
- ⑦ Spinner
- ⑧ Climber
- ⑨ Basketball Half Court
- ⑩ Multi-use Artificial Turf
- ⑪ Shade Tree (typ.)
- ⑫ Existing Shade Tree (typ.)

site design



akrf





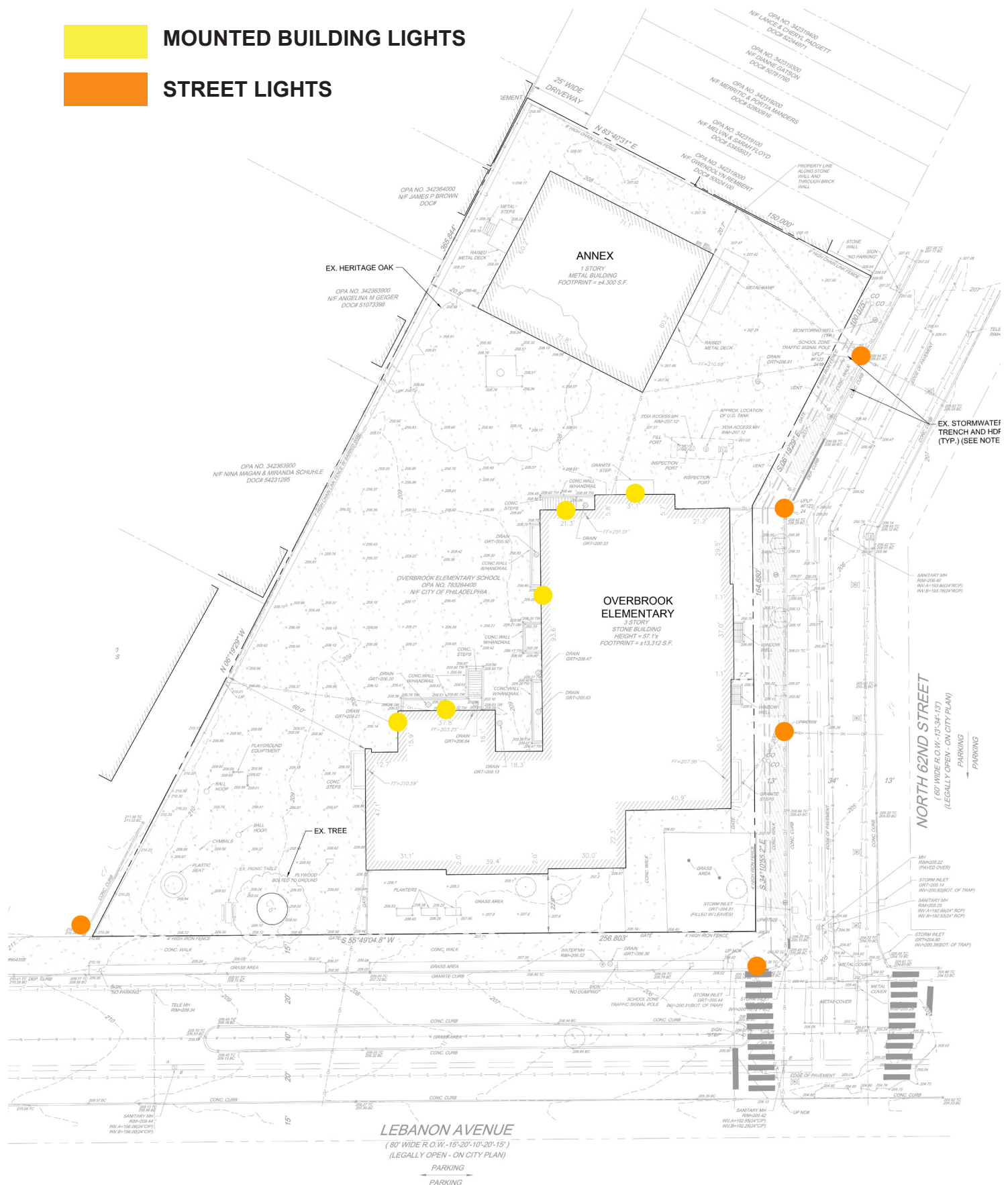
programming







existing lighting







*Betula nigra*  
River Birch



*Quercus bicolor*  
Swamp Oak



*Liquidambar styraciflua*  
Sweet Gum



*Amelanchier arborea*  
Shadblow



*Cladrastris kentukea*  
Yellowwood



*Juniperus virginiana* 'Gray Owl'  
Gray Owl Juniper



*Aronia melancarpa*  
Black Chokeberry



*Viburnum dentatum*  
Arrowwood Viburnum



*Physocarpus opulifolius*  
Diablo Ninebark



*Cornus sericea*  
Redosier Dogwood



*Amsonia hubrectii*  
Arkansas Bluestar



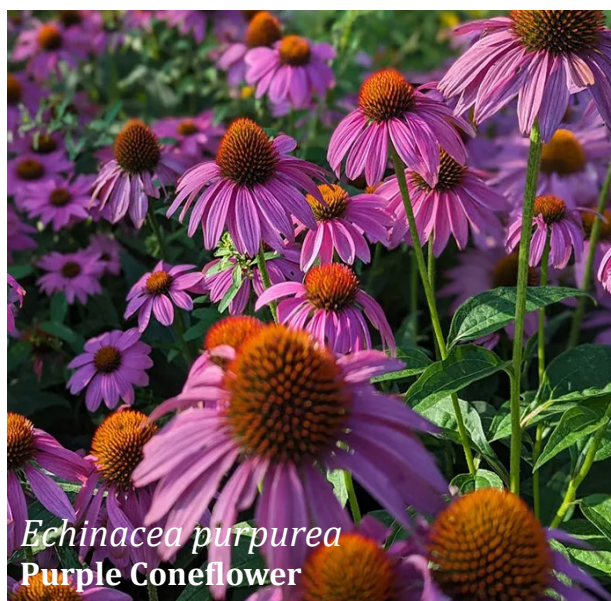
*Chelone glabra*  
Turtle Head



*Packera obovata*  
Round-leaved Ragwort



*Hibiscus moscheuto* 'Luna Red'  
Luna Red Hibiscus



*Echinacea purpurea*  
Purple Coneflower





existing perspective view







proposed perspective view







Alexander  
Adaire  
Elementary



Add B.  
Anderson  
School



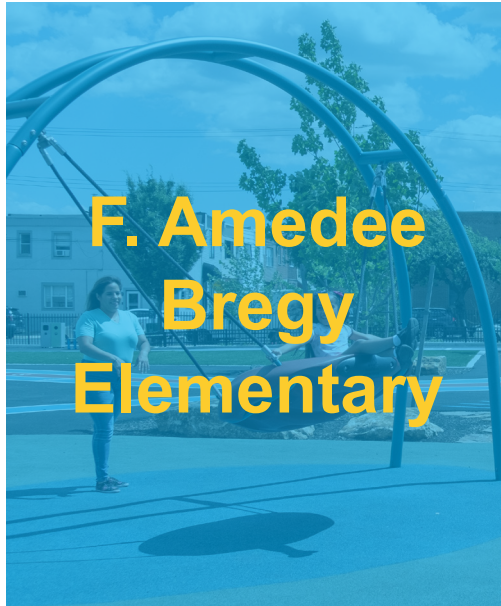
Alain  
Locke  
School



AMY  
Northwest  
Middle School



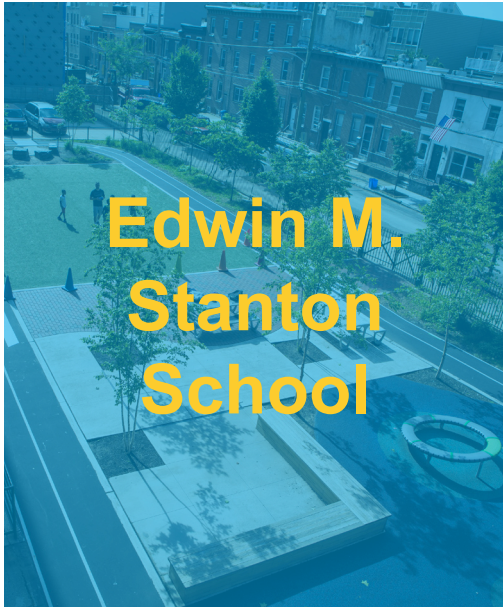
Benjamin  
Franklin  
Elementary



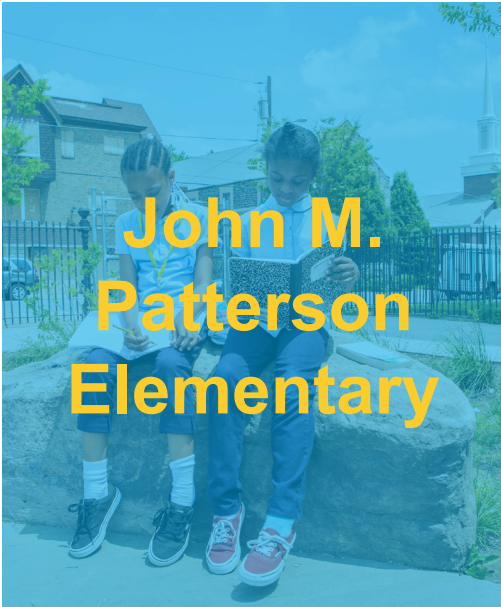
F. Amedee  
Bregy  
Elementary



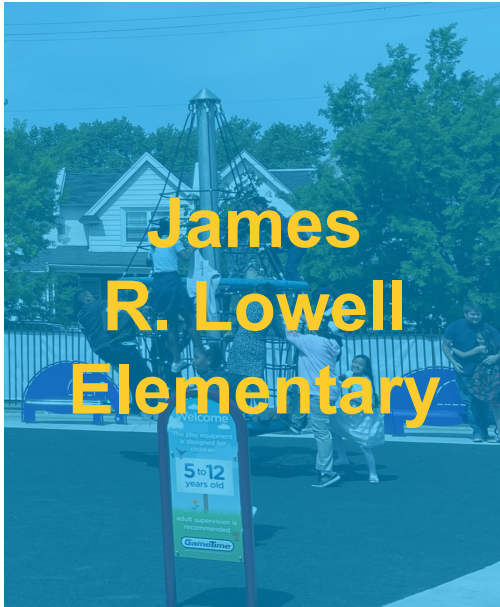
William  
Cramp  
Elementary



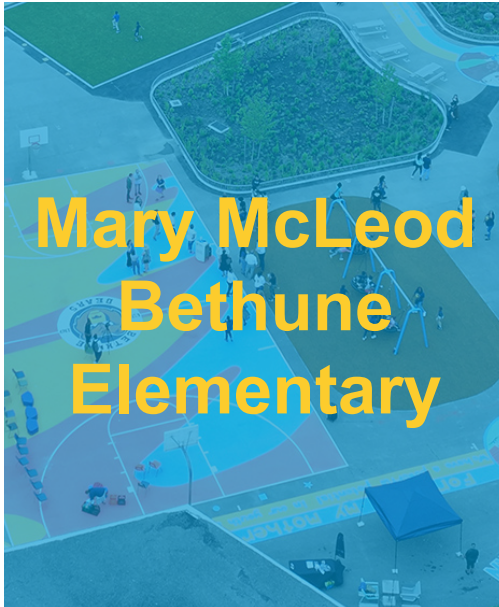
Edwin M.  
Stanton  
School



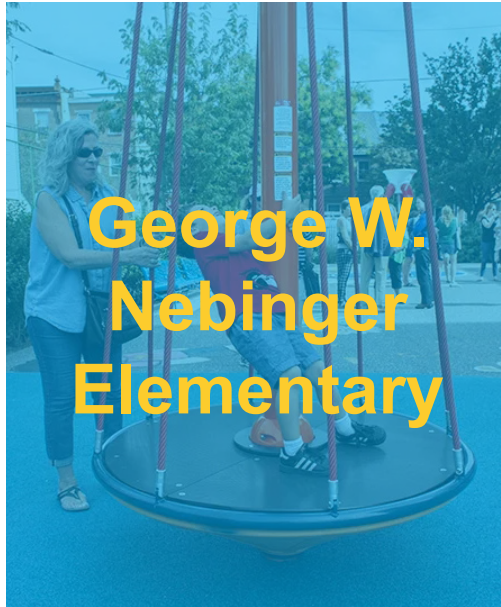
John M.  
Patterson  
Elementary



James  
R. Lowell  
Elementary



Mary McLeod  
Bethune  
Elementary



George W.  
Nebinger  
Elementary



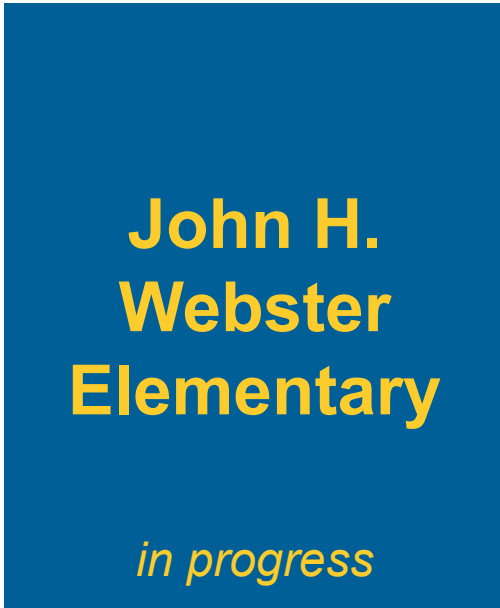
Southwark  
School



John H.  
Taggart  
School

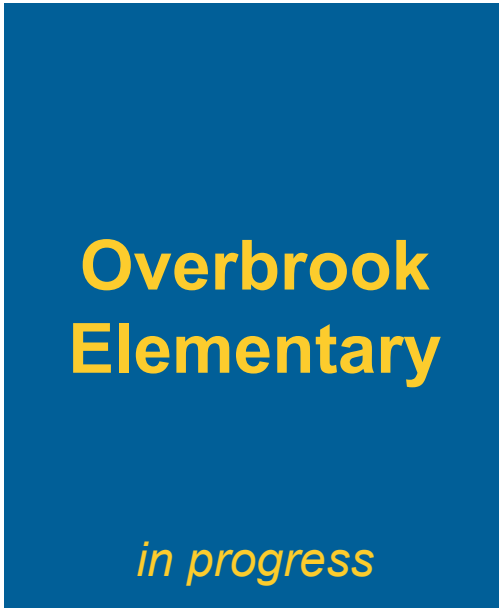


William  
Dick  
School



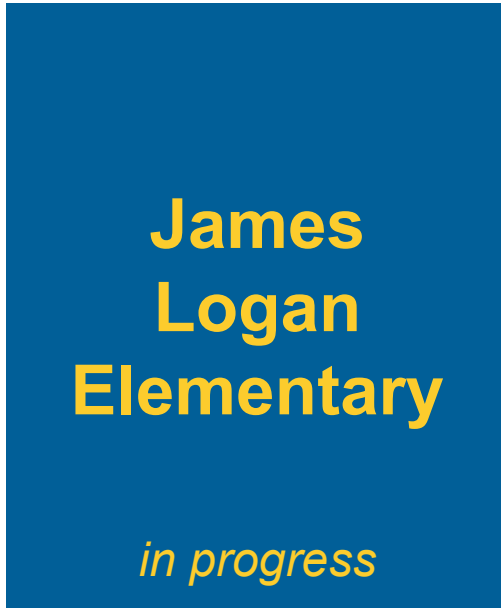
John H.  
Webster  
Elementary

*in progress*



Overbrook  
Elementary

*in progress*



James  
Logan  
Elementary

*in progress*

# TPL Philadelphia projects



TRUST FOR  
PUBLIC  
LAND™

akrf

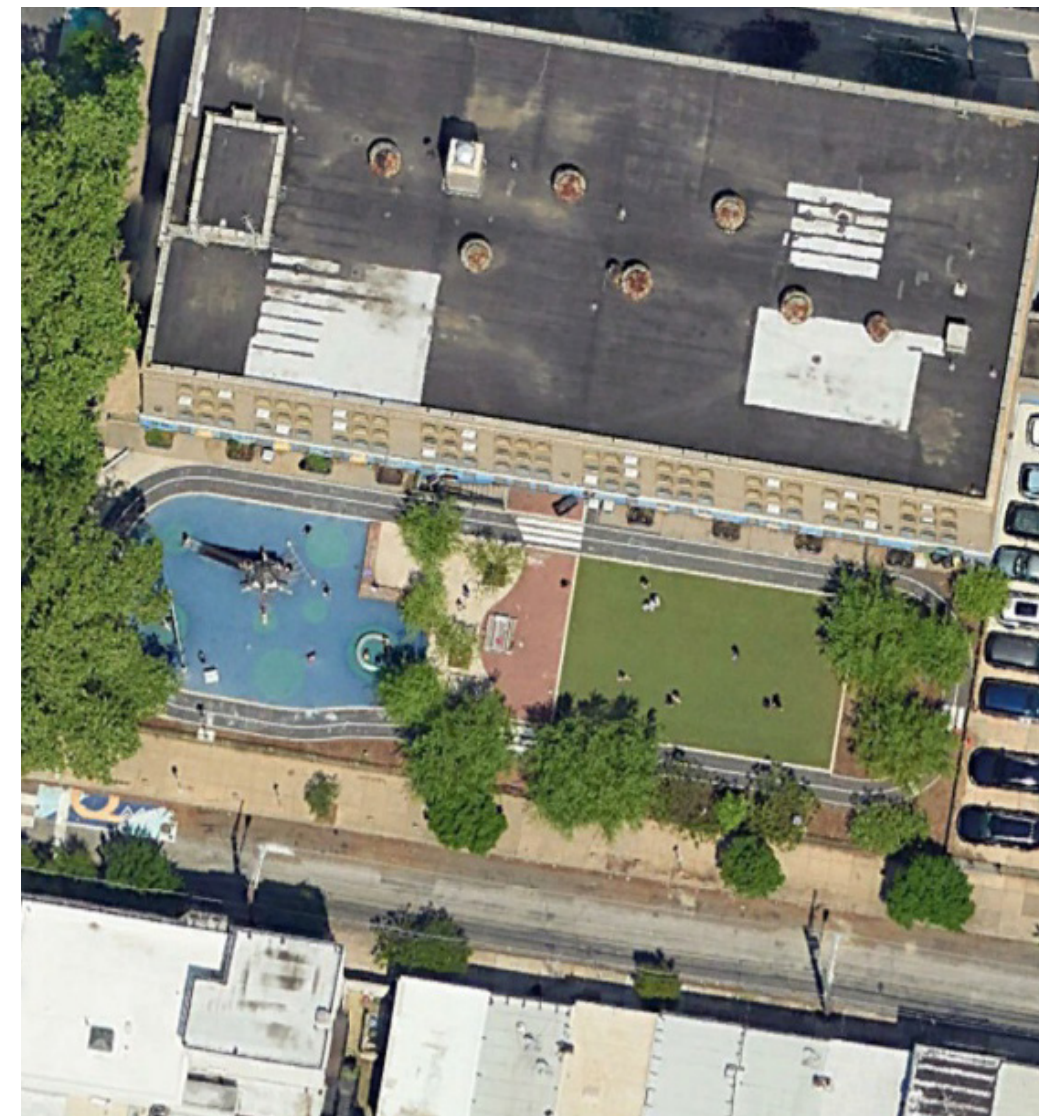




**Bregy Elementary School**







**Edwin M. Stanton School**



**TRUST FOR  
PUBLIC  
LAND™**

**akrf**



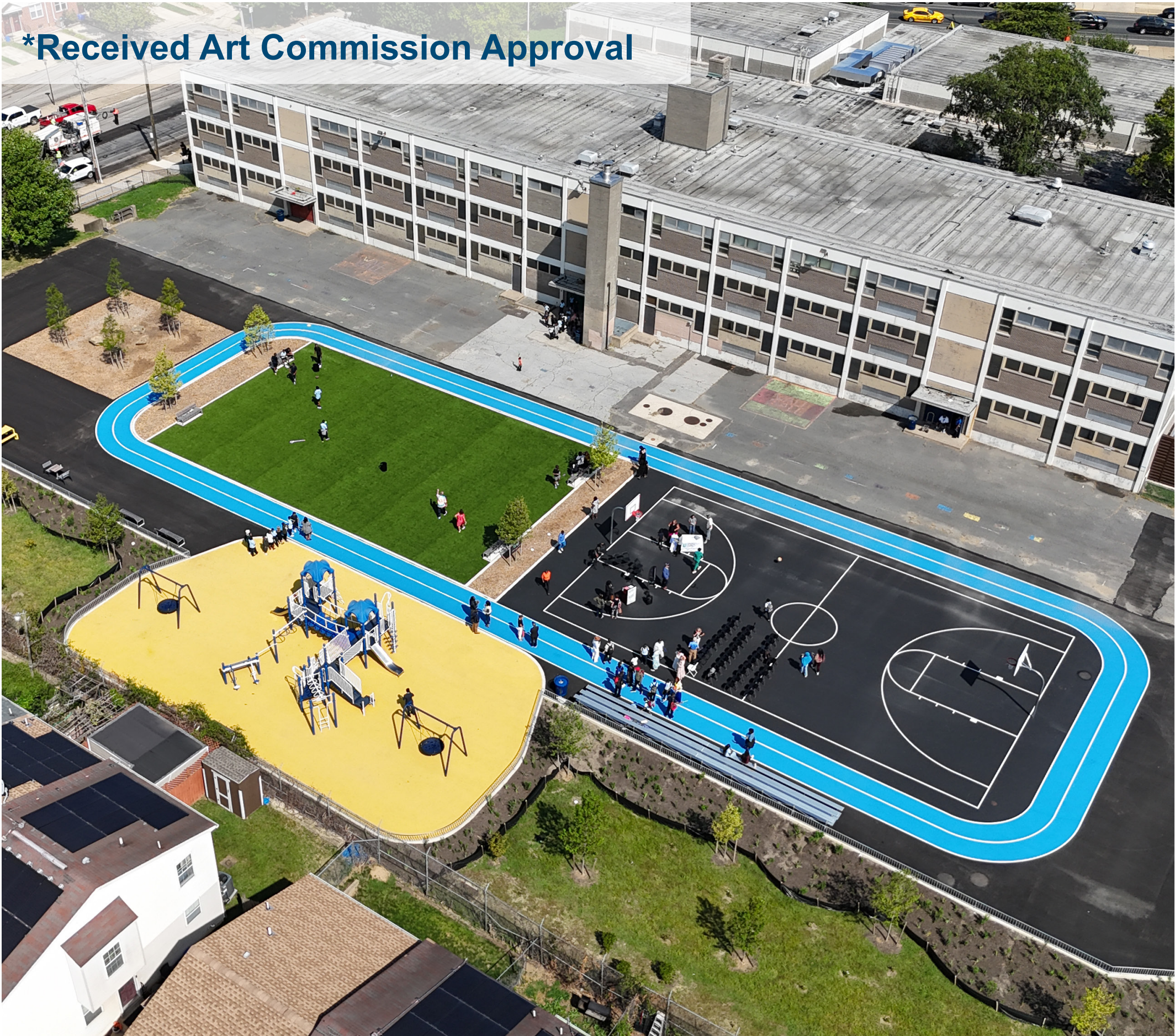
\*Received Art Commission Approval



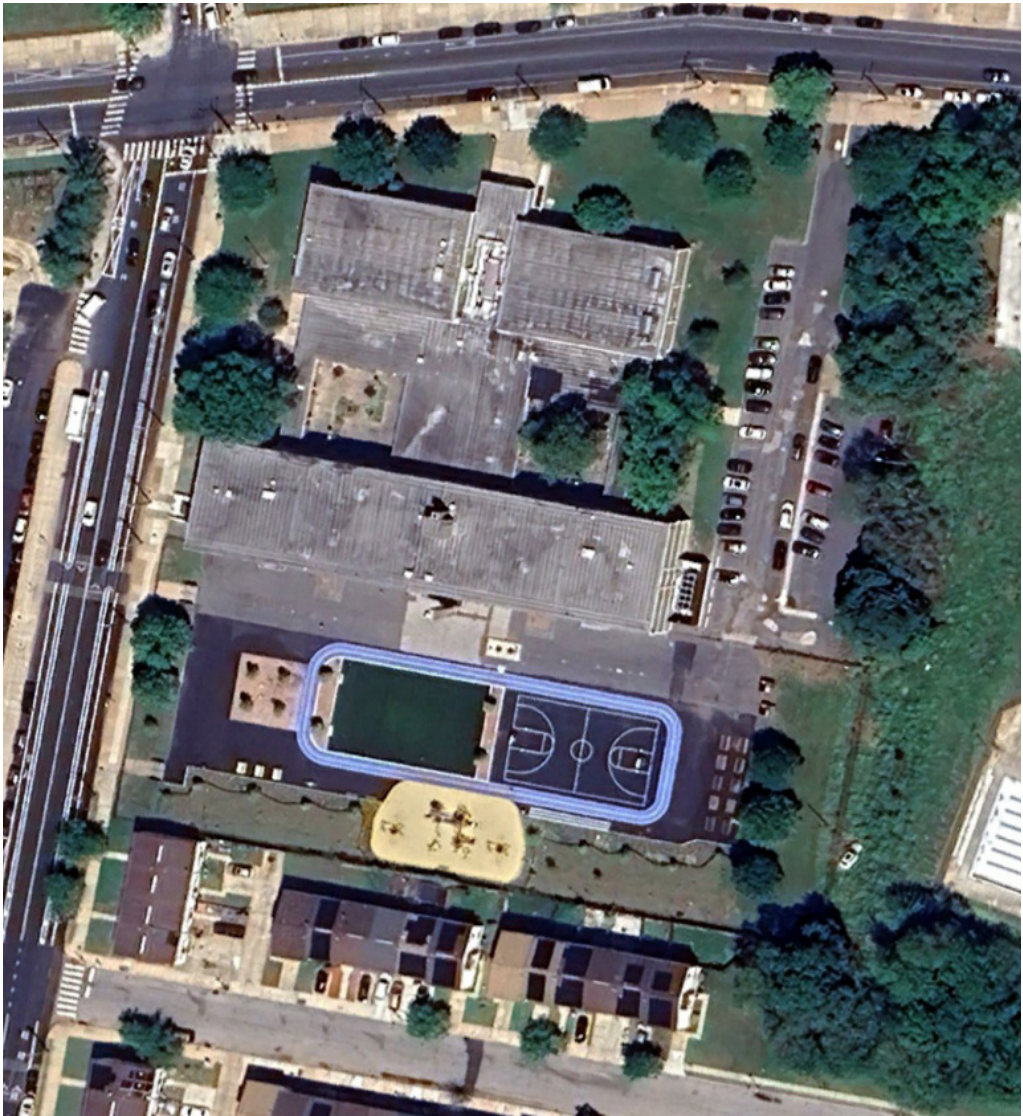
Mary McLeod Bethune School







\*Received Art Commission Approval



# Alain Locke School







**John M. Patterson Elementary School**

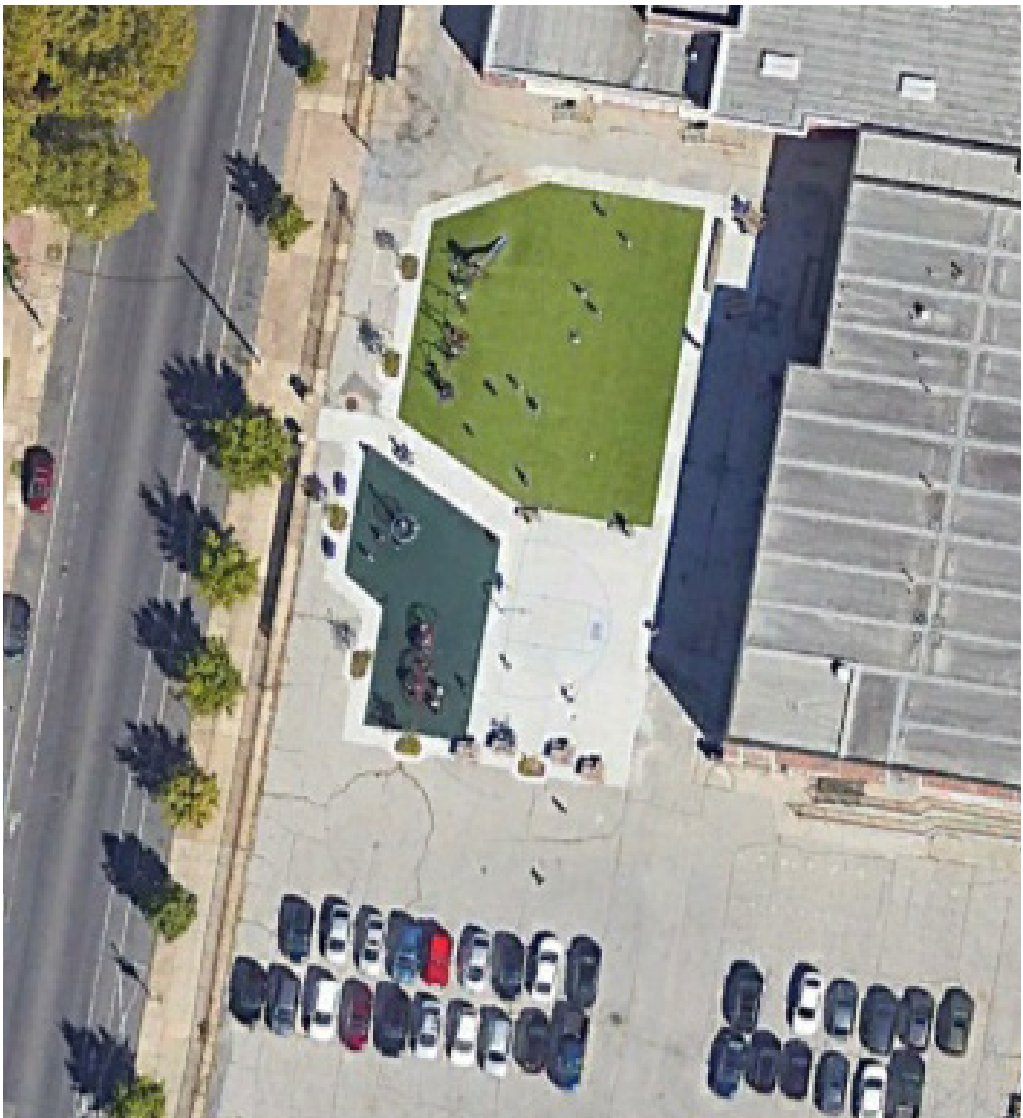


**TRUST FOR  
PUBLIC  
LAND™**

**akrf**



**\*Received Art Commission Approval**



**James R. Lowell Elementary School**







**Benjamin Franklin School**





questions?





2401 Walnut St.  
Suite 703  
Philadelphia, PA  
19103  
tpl.org

# Overbrook Elemenetary Schoolyard Improvement Construction Budget (Concept)

2032 N 62nd St, Philadelphia, PA 19151

Date: June, 28,2025

Source	Amount
Trust for Public Land	\$390,000.00
Philadelphia School District	\$250,000.00
Philadelphia Water Department Stormwater Incentives Grant	\$60,000.00
Estimated Total Construction Cost*	\$700,000.00