

Wednesday July 23, 2025

Philadelphia Art Commission
1515 Arch St., 13th Floor
Philadelphia, PA 19102

**Re: Philadelphia Art Commission Proposal
Site Improvements to Mander Playground
Mander Playground, 2140 N 33rd St.
Langan Project No.: 220104115**

Dear Members of the Philadelphia Art Commission:

We look forward to presenting at your August 13th meeting where we will seek Administrative Approval for our proposed site improvements at Mander Playground 2140 N 33rd St. The site improvements are believed to be a valuable addition to Philadelphia's public and recreational landscape, enhancing Strawberry Mansion and Fairmount Park's play and gathering spaces.

The project involves recycling the existing play equipment, demolishing existing surface conditions, and replacing the hardscape and play surfaces to accommodate the new playground equipment and furnishings. The site disturbance is nearly the same square footage as the existing conditions. No major areas will be disturbed that will not be enhanced. The playground will have one area designated for ages 2-5 play that will include a small play tower with slides, musical chimes and drums, and a swing set which will have 3 tot bucket seats and 1 accessible chair seat. There will be an additional area dedicated to 5-12 year-old play which will include a larger play tower with slides and a swing set with 4 seats. A seating patio is proposed along with a new planting area, where ornamental shrubs and four small flowering trees will provide a beautified welcome to the site and offer some shade for the new tables in the patio space. No existing trees will be removed from the site. Additionally, the existing spray ground will have four new post fixtures installed to enhance the area and match with the new playground theme.

The playground selection process involved two public community engagement meetings and an online survey. The first meeting held on March 25, 2025, introduced the project to the community and feedback was collected on the types of improvements and amenities they desired. This feedback was developed into three concepts. At the second meeting, held on June 17, 2025, these three playground design concepts were presented and the community then provided feedback and voted on their preferred choice. To gather more feedback, an online survey was distributed to Strawberry Mansion constituents. A final design was selected based on preferred play equipment and color options, which is presented in this proposal. The City Council of Philadelphia has sponsored this project with a total budget of \$995,000.00. These funds were allocated to the project by Council District 5.

Thank you for your time and consideration. The opportunity to discuss the proposal further and answer any questions is appreciated.

Sincerely,
Langan Engineering and Environmental Services, LLC



Carolyn Campbell
Senior Project Landscape Architect

Contact Information:

Art Commission's Decision:
Jane Anderson
1515 Arch Street, 11th Floor
Philadelphia, PA 19102
Jane.Anderson@phila.gov

Contact Person for Questions:
Ruth Penberthy
215-845-8902
rpenberthy@langan.com

Joseph E. Mander Playground

2140 N 33rd Street, Philadelphia 19121

August 2025
Art Commission Submission Package



CAPITAL PROGRAM OFFICE
CITY OF PHILADELPHIA



**PHILADELPHIA
PARKS &
RECREATION**

LANGAN



MANDER PLAYGROUND



CAPITAL PROGRAM OFFICE
CITY OF PHILADELPHIA



**PHILADELPHIA
PARKS &
RECREATION**

LANGAN

Project Boundary



MANDER PLAYGROUND



CAPITAL PROGRAM OFFICE
CITY OF PHILADELPHIA



**PHILADELPHIA
PARKS &
RECREATION**

LANGAN

Existing Conditions



MANDER PLAYGROUND



CAPITAL PROGRAM OFFICE
CITY OF PHILADELPHIA



**PHILADELPHIA
PARKS &
RECREATION**

LANGAN

Existing Conditions



MANDER PLAYGROUND



CAPITAL PROGRAM OFFICE
CITY OF PHILADELPHIA



**PHILADELPHIA
PARKS &
RECREATION**

LANGAN

Existing Site Entrance



MANDER PLAYGROUND



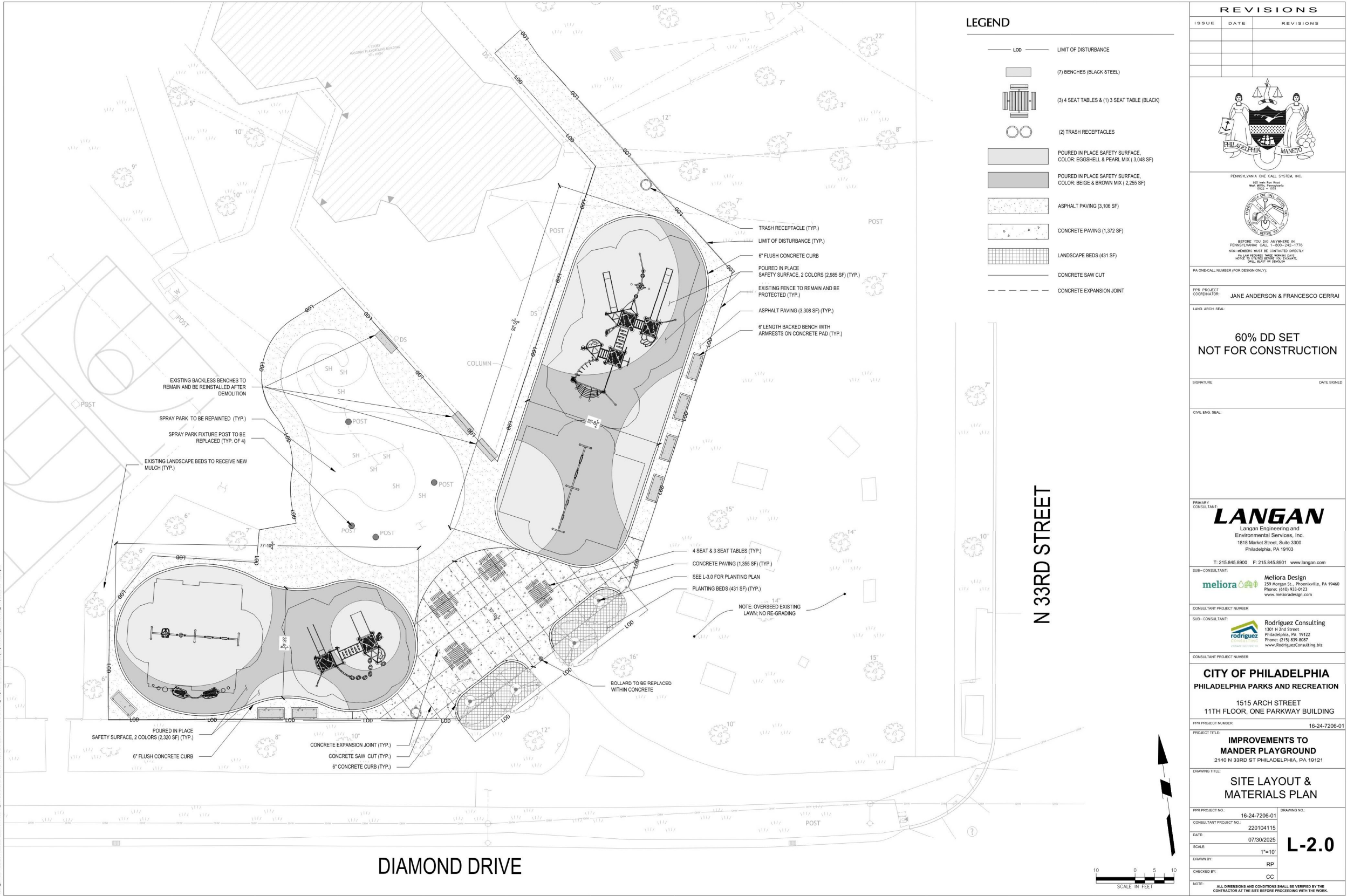
CAPITAL PROGRAM OFFICE
CITY OF PHILADELPHIA



**PHILADELPHIA
PARKS &
RECREATION**

LANGAN

Existing Signage



MANDER PLAYGROUND



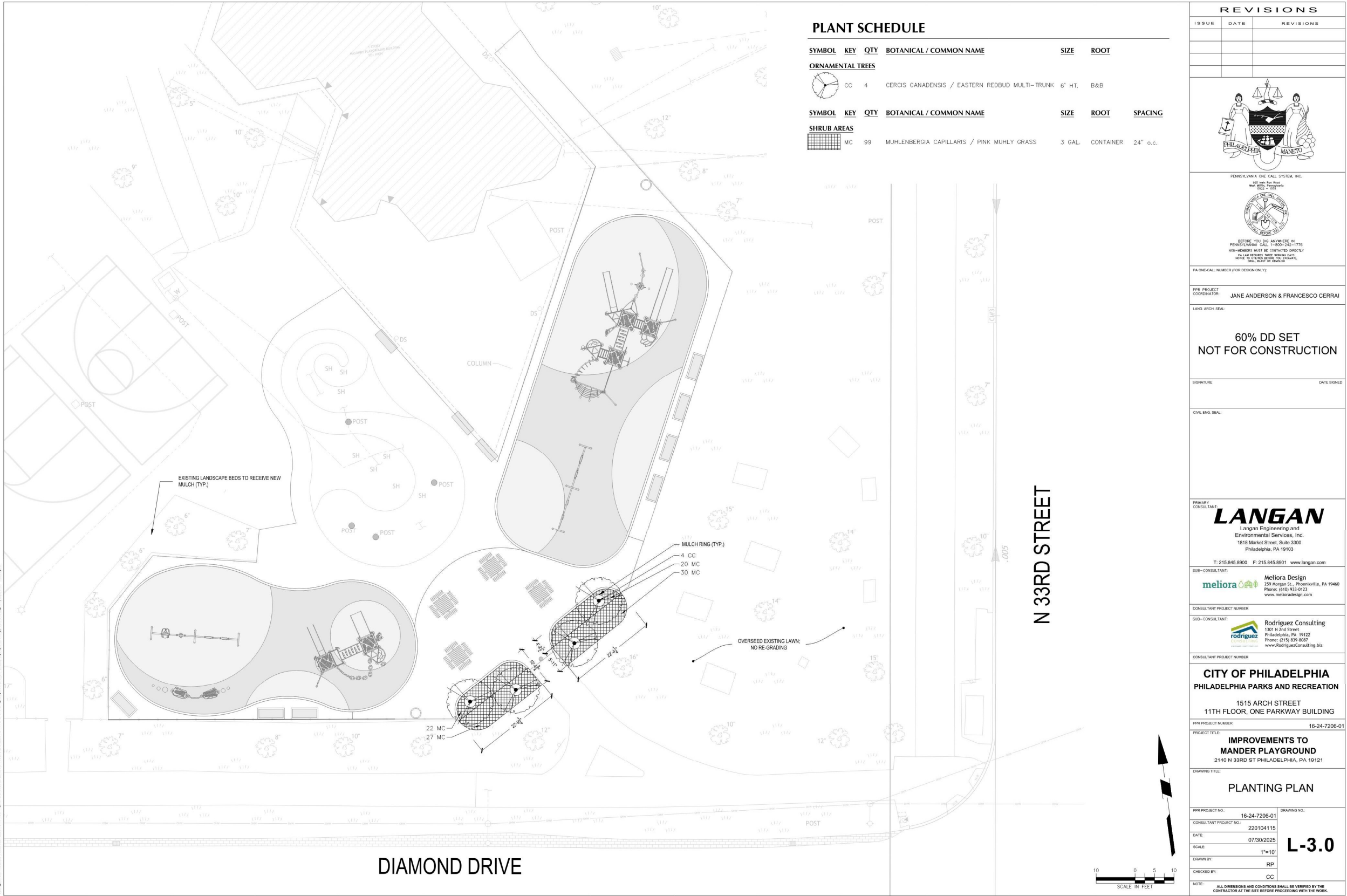
CAPITAL PROGRAM OFFICE
CITY OF PHILADELPHIA



PHILADELPHIA
PARKS &
RECREATION

LANGAN

Site Layout & Materials Plan



MANDER PLAYGROUND



SPACE ODYSSEY



FLOWER PATCH



AQUAMARINE







MANDER PLAYGROUND

 **LANGAN**

DESIRED OPTION | FEEDBACK BOARD



MANDER PLAYGROUND



CAPITAL PROGRAM OFFICE
CITY OF PHILADELPHIA



**PHILADELPHIA
PARKS &
RECREATION**

LANGAN

Community Engagement & Design Process

Powder Coat Paint Posts & Accessories

Green	Burgundy
Olive	Red
Lime	Redwood
Mint	Orange
Spanish Moss	Yellow
Aqua	Lemon
Sky	Gold
Ocean	Tan
Blue	Brown
Navy	Black
Purple	Charcoal
Lilac	Silver
Fuchsia	White

MANDER PLAYGROUND

PALETTE AL

PALETTE CK

PALETTE BM

PALETTE AN

PHILADELPHIA PARKS & RECREATION

JEFFERY YOUNG JR.
5TH DISTRICT COUNCILMEMBER

City Council

ADDITIONAL COLOR OPTIONS

MANDER PLAYGROUND



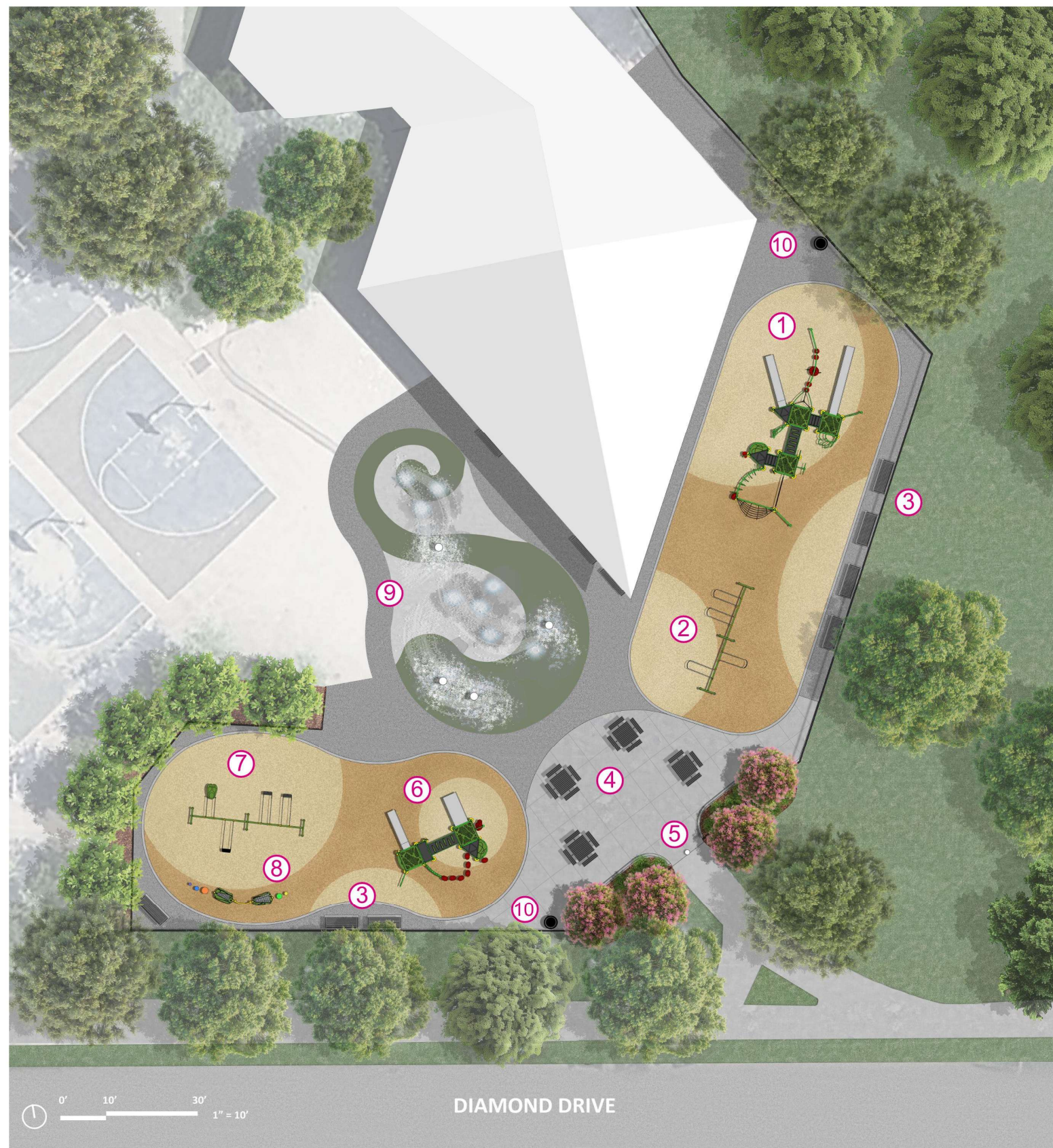
CAPITAL PROGRAM OFFICE
CITY OF PHILADELPHIA










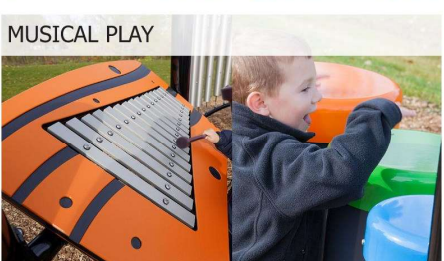


**PHILADELPHIA
PARKS &
RECREATION**

LANGAN

Community Engagement & Design Process



LEGEND

- ① AGES 5-12 CUSTOM PLAY AREA

- ② AGES 5-12 SWING SET

- ③ BENCHES

- ④ PICNIC SEATING PATIO WITH TABLES

- ⑤ ORNAMENTAL PLANTINGS

- ⑥ AGES 2-5 CUSTOM PLAY AREA

- ⑦ AGES 2-5 SWING SET

- ⑧ MUSICAL PLAY

- ⑨ SPRAYGROUND POST FIXTURES

- ⑩ TRASH RECEPTACLES


MANDER PLAYGROUND



CAPITAL PROGRAM OFFICE
CITY OF PHILADELPHIA



**PHILADELPHIA
PARKS &
RECREATION**

LANGAN

Plan Rendering



MANDER PLAYGROUND



CAPITAL PROGRAM OFFICE
CITY OF PHILADELPHIA



**PHILADELPHIA
PARKS &
RECREATION**

LANGAN

Ages 2-5 Play Tower, Swing Set &
Drums and Chimes



MANDER PLAYGROUND



CAPITAL PROGRAM OFFICE
CITY OF PHILADELPHIA



**PHILADELPHIA
PARKS &
RECREATION**

LANGAN

Ages 5-12 Play Tower & Swing Set