

**Forman Sign Company
10447 Drummond Road
Philadelphia, PA 19154
215-827-6500
215-827-6501 FAX**

July 11, 2025

Philadelphia Art Commission
One Parkway
1515 Arch Street, 13th Floor
Philadelphia, PA 19102
Attn: Alex Smith
215-683-2095

Re: The UPS Store
1735 Market St.

Proposed: One 24"x24" double-faced projecting sign perpendicular to N. 18th St. Painted aluminum faces and mounting structure with white acrylic top, bottom, and sides, internally illuminated with 3500K white LEDs. Routed copy backed up with white acrylic. 26-1/2" overall projection from façade, minimum 14' clearance to grade.

The proposed sign will be installed in place of an existing wall-mounted light fixture. The 3500k LED is in the "warm white" range with brightness equivalent to a 60-watt incandescent light bulb or 800-lumen LED bulb. A typical LED wall sign uses 7000k LED.

Thank you,

A handwritten signature in dark ink, appearing to read "Sharon Brandt". The signature is fluid and cursive, with the first name "Sharon" and last name "Brandt" clearly distinguishable.

Sharon Brandt

The UPS Store – 1735 Market St.

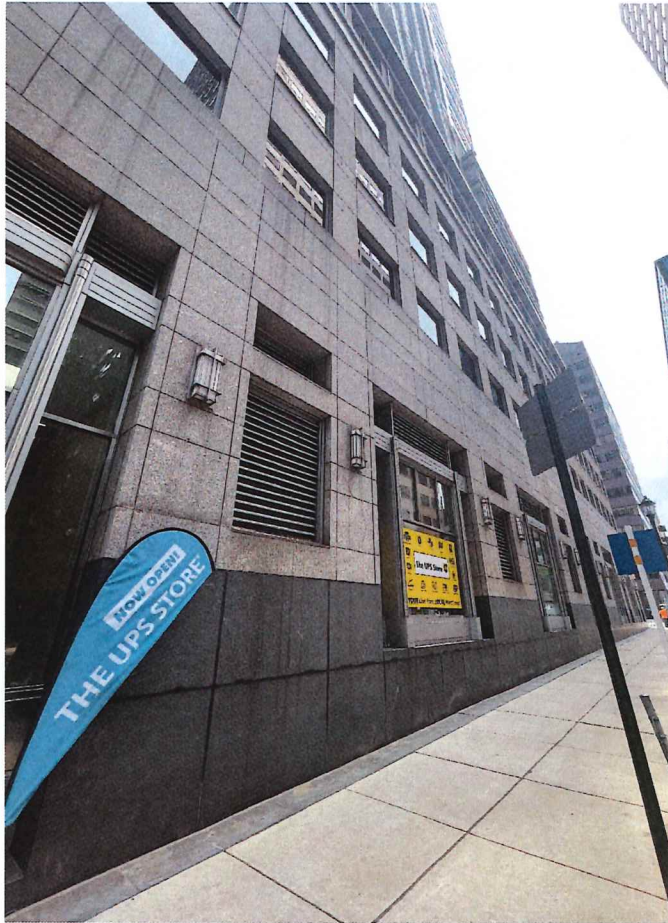
These photos have not been manipulated in any way on a computer



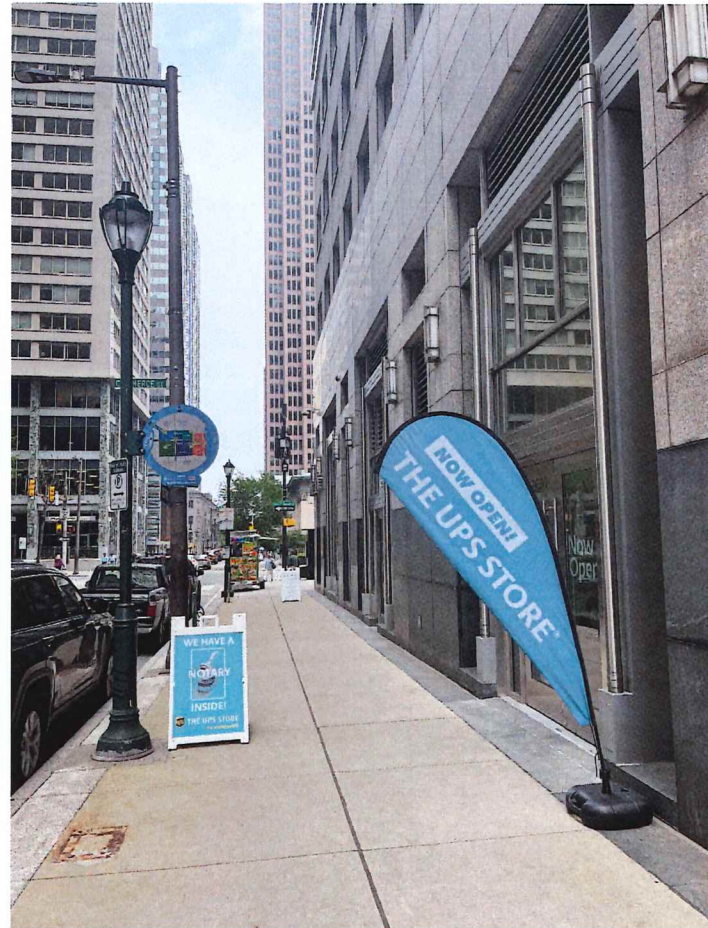
N. 18th St. – Straight on



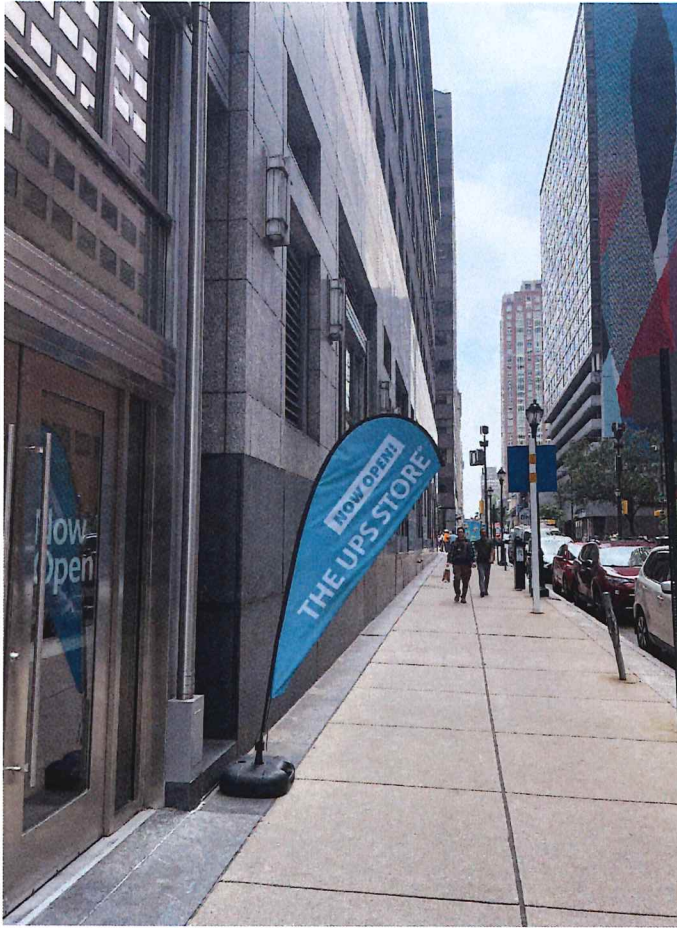
N. 18th St. – Building to left



N. 18th St. – Building to right



Looking down N. 18th St. to left



Looking down N. 18th St. to right



Looking across N. 18th St.

Ground Level

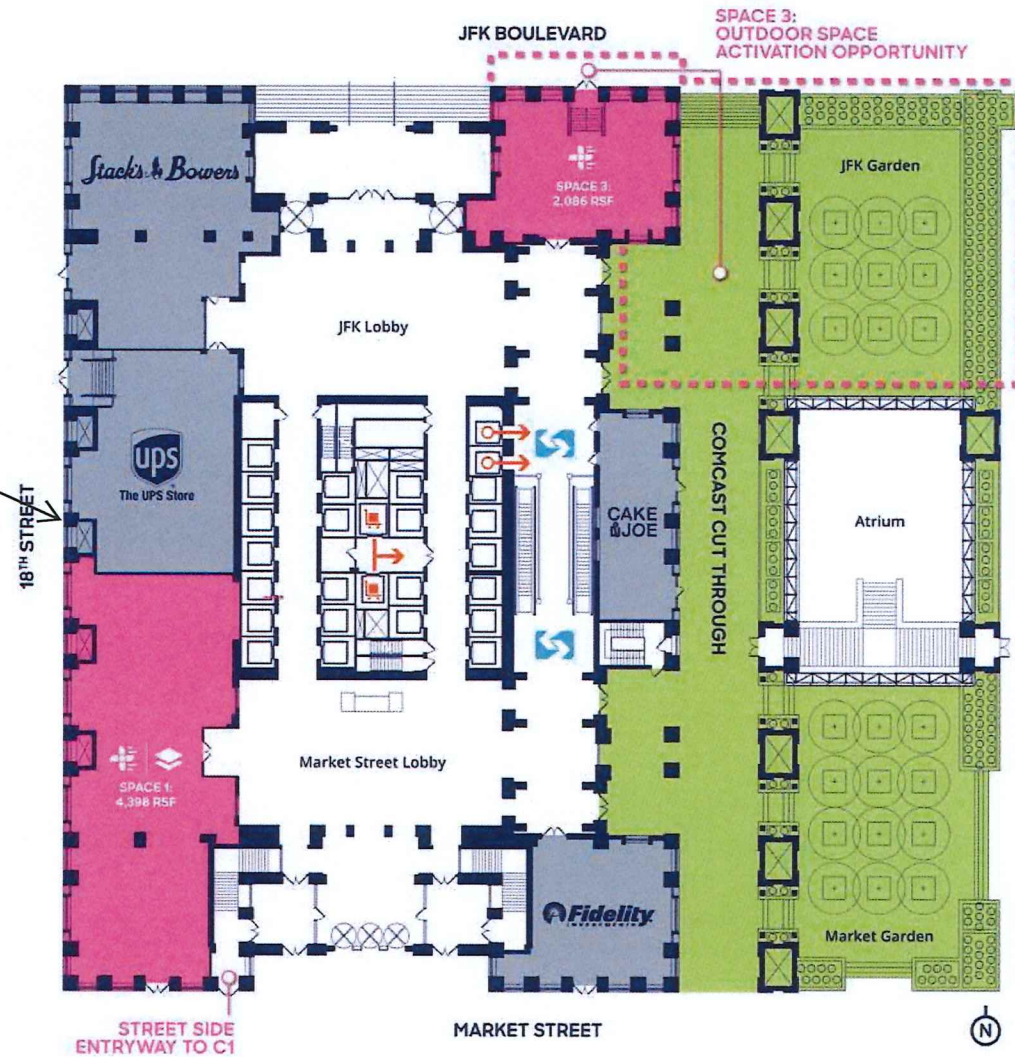
SPACE 1: 4,398 RSF

SPACE 3: 2,086 RSF
(Outdoor space activation opportunity)

KEY:

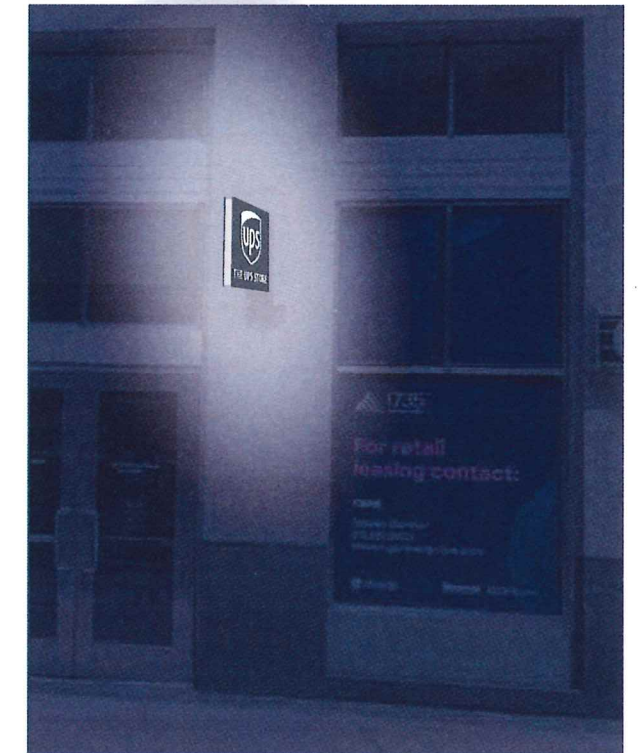
- Available
- Outdoor Space
- Common Area
- Leased
- SEPTA Access
- Elevator Access
- Service Elevator
- Ventable Space
- Space can be stacked with concourse

Proposed 24"x24"
double-face illum
projecting sign

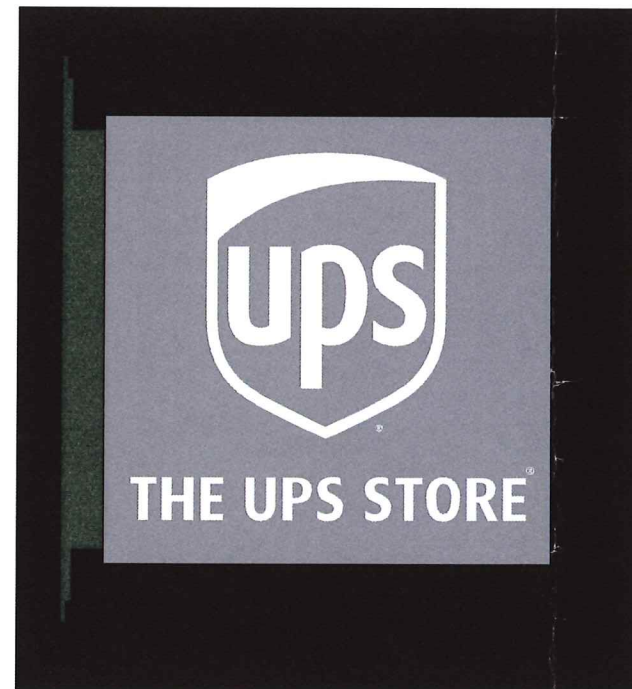
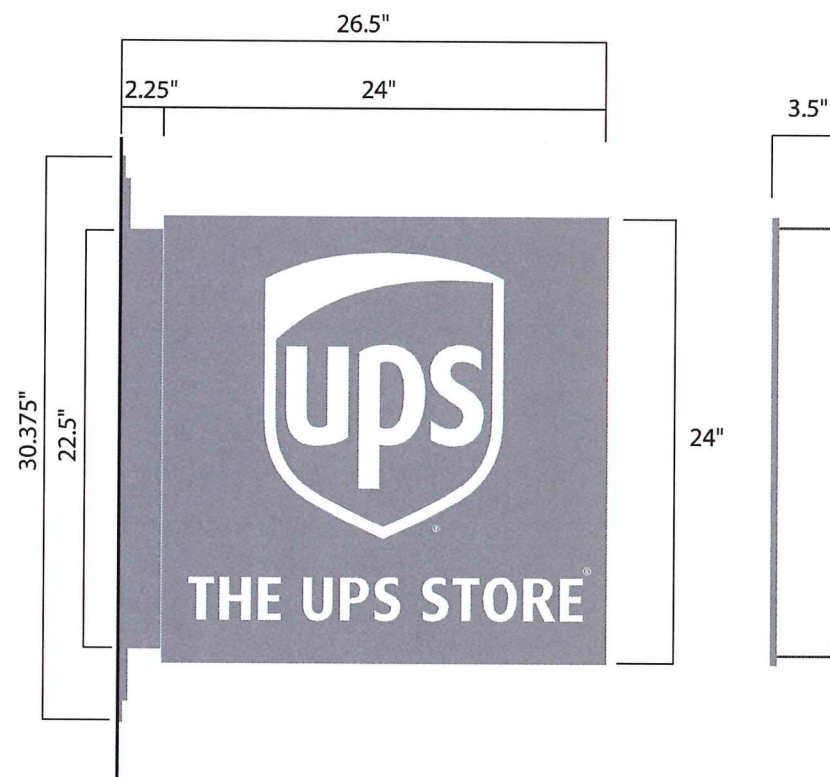




BEFORE



AFTER DAY/NIGHT



Night View

26 1/2"W x 24"H x 3 1/2"D internally-illuminated Aluminum housing routed out logo on 1/4" thick aluminum faces with acrylic core.

PPG UC70192F Silver Gray
No visible fasteners
3500k LED Illumination

Mounting Plate Details:
13 3/8"w X 30 3/8"h
1/4" Thick Aluminum plate with staggered holes to be screwed to aluminum reveal.
Plate to be welded to aluminum support arm.



© 2025 Everbrite, LLC, all rights reserved. This document is confidential and proprietary to Everbrite, LLC. Any disclosure to a third party is expressly prohibited. Drawings are for graphic purposes only and not intended for actual construction. For more specific manufacturing detail, please refer to engineering specifications and install drawings.

Customer: The UPS Store #3263

Project No: 524551-1 A

Scale: 1" = 1'

Date: 6/18/25

Drawn By: JLR

Location & Site No: 1735 Market St STE 125
Philadelphia PA 19103-7501

36972

Description:

24 x 24 Blade Sign Illuminated

Revised: 6/27/25

Revised:

Customer Approval: Graphics and colors on file will be used unless otherwise specified by customer. Please review drawing carefully. By signing below, you agree to graphics as shown above, and to location of sign as shown. Please return signed copy back to Everbrite.

CUSTOMER SIGNATURE

DATE

LANDLORD SIGNATURE

DATE

No fasteners
injection from
sign to wall

