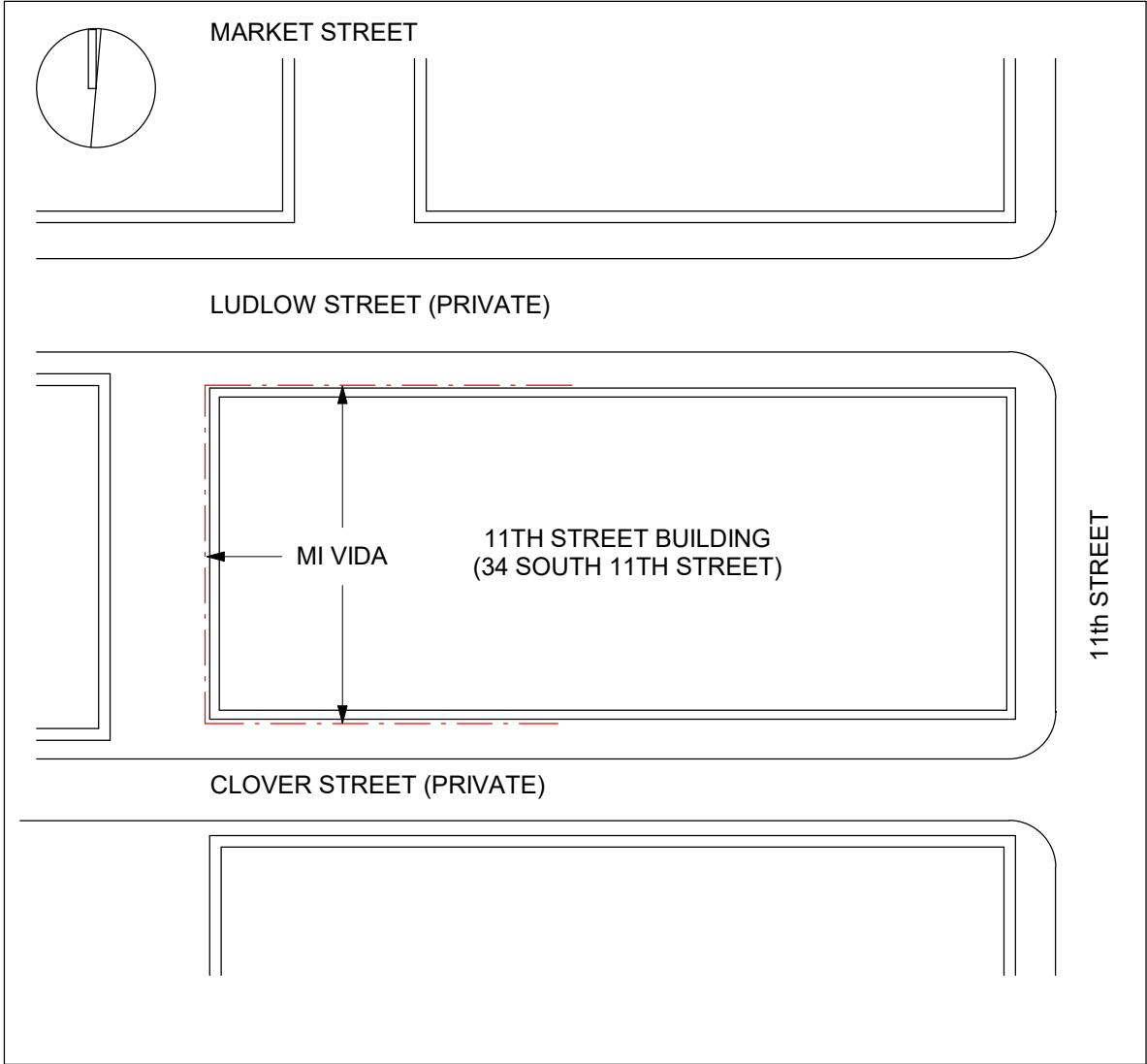
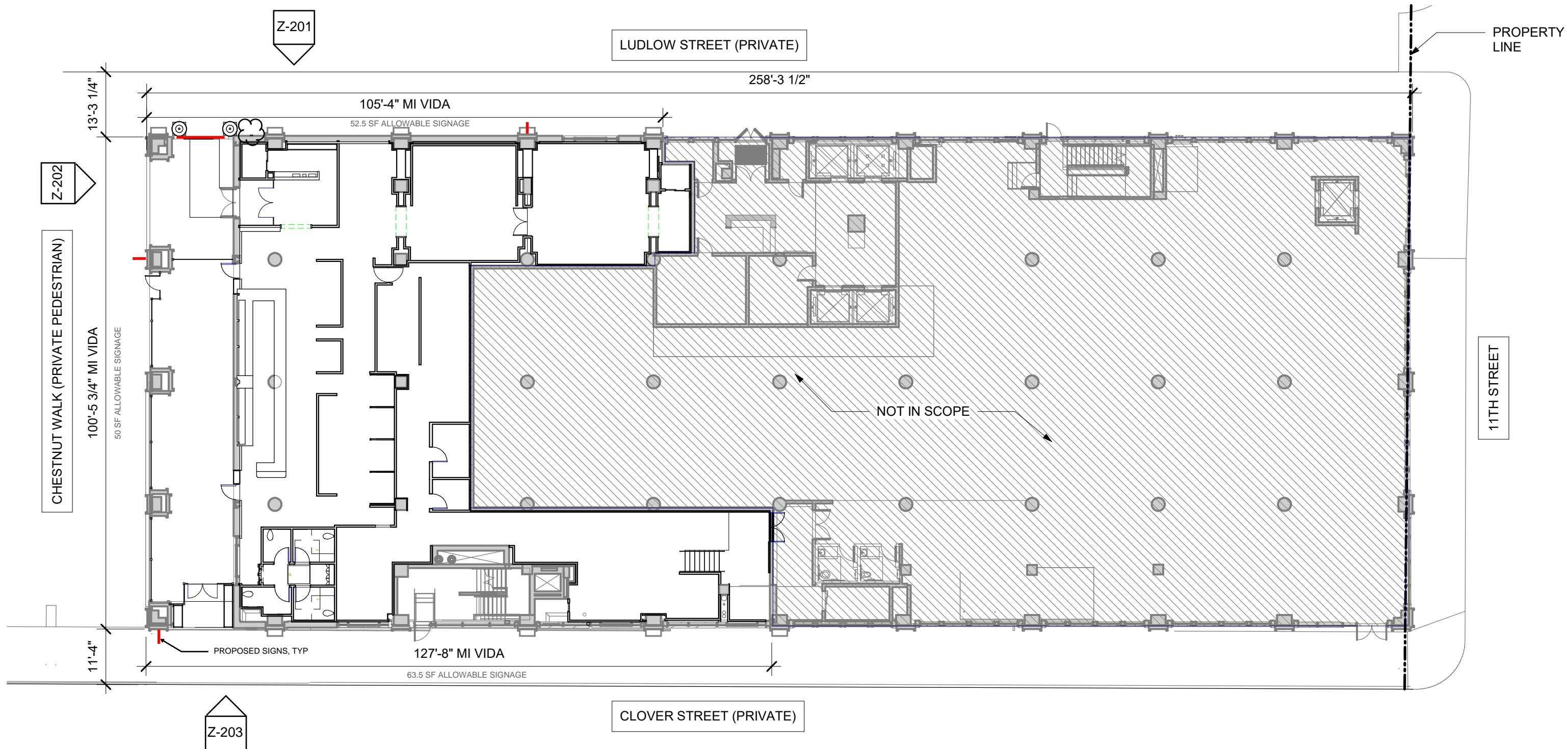


MI VIDA EAST MARKET

SIGNAGE PACKAGE





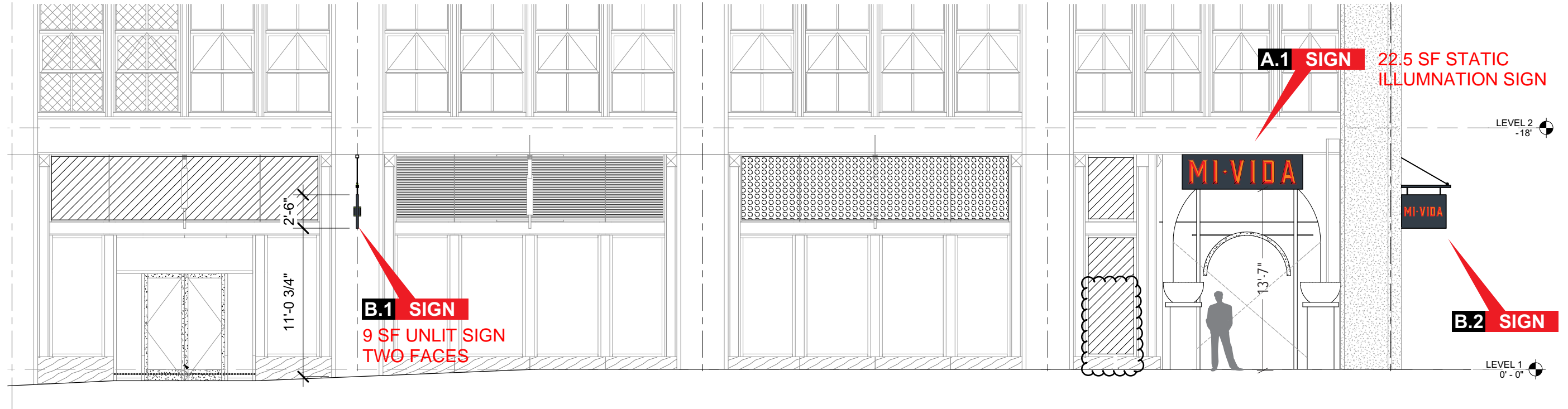
SIGNAGE SITE PLAN

MI VIDA - EAST MARKET

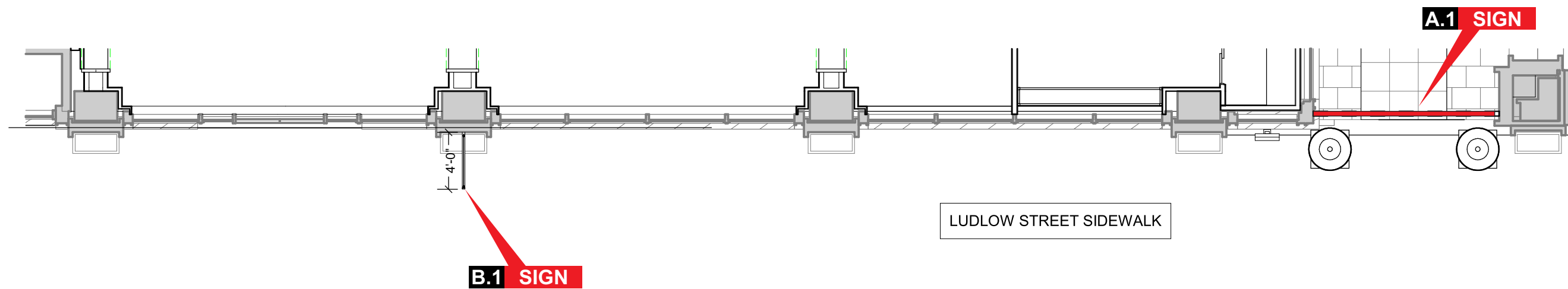
**PERKINS —
EASTMAN**

05/30/25
REV 2 07/01/25

Z-100

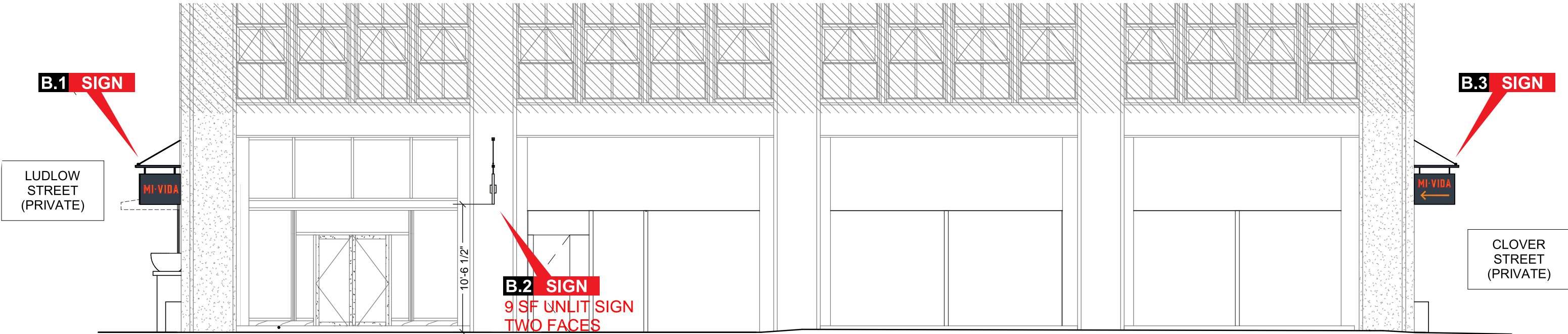


E1 LUDLOW STREET ELEVATION
Scale: 1/8" = 1'-0"

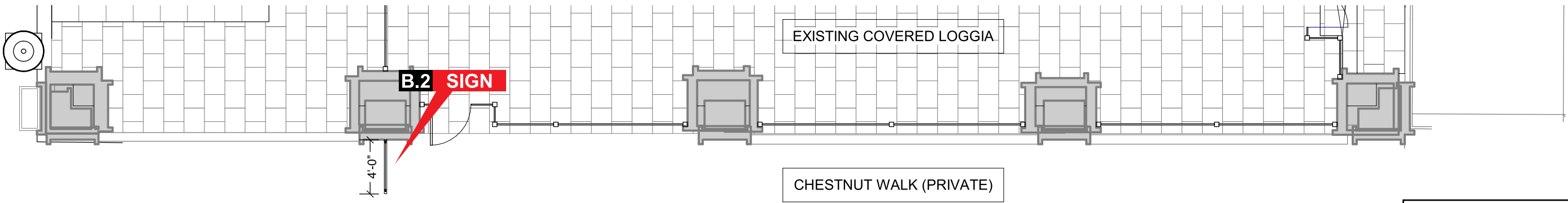


E2 PLAN VIEW
Scale: 1/8" = 1'-0"

40.5 SF OF
PROPOSED
SIGNAGE / 52.5 SF
ALLOWABLE

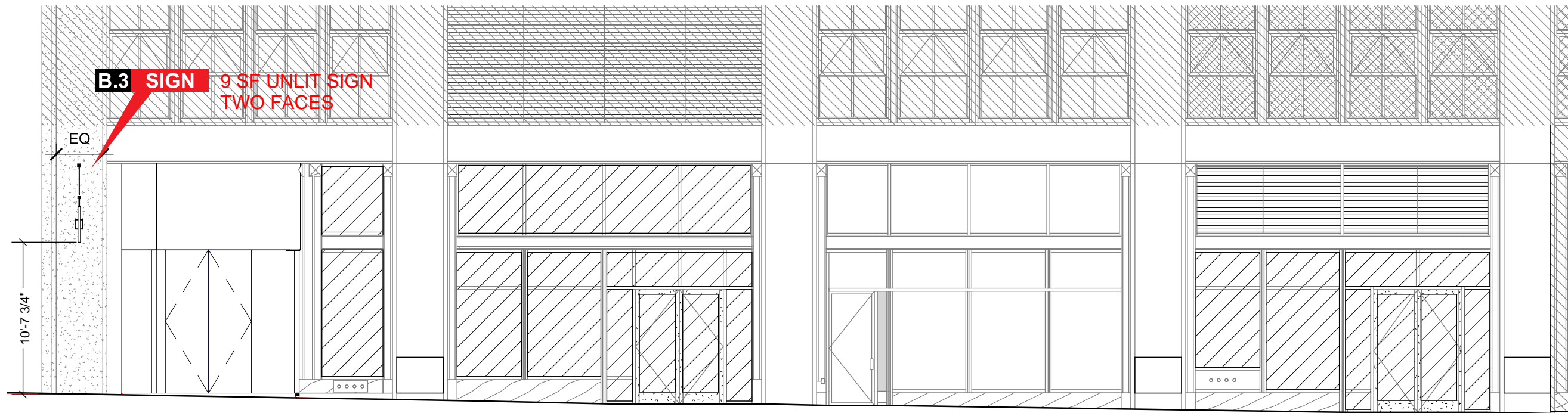


C1 CHESNUT WALK ELEVATION
 Scale: 1/8" = 1'-0" A11A-101

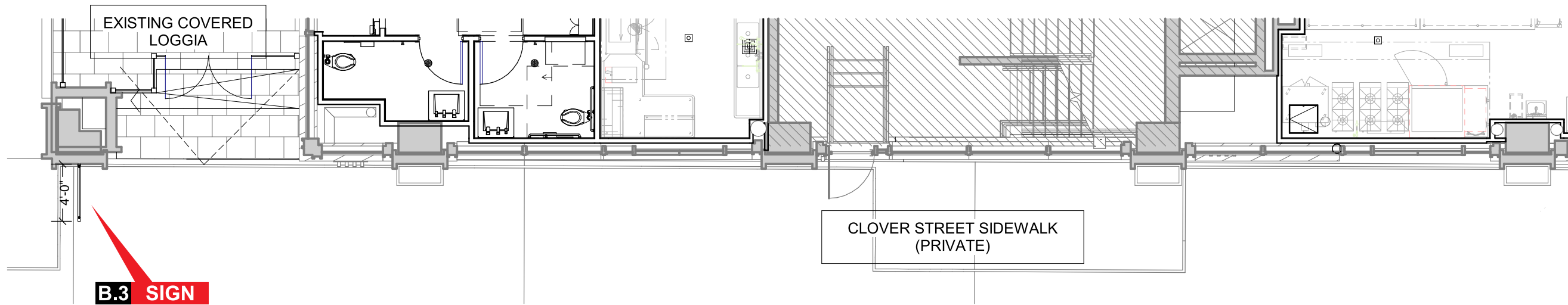


C1 PLAN VIEW
 Scale: 1/8" = 1'-0" A11A-101

18 SF OF
 PROPOSED
 SIGNAGE / 50 SF
 ALLOWABLE



F1 CLOVER STREET ELEVATION
Scale: 1/8" = 1'-0"



F2 PLAN VIEW
Scale: 1/8" = 1'-0"

18 SF OF
PROPOSED
SIGNAGE / 63.5 SF
ALLOWABLE



PROPOSED SIGNAGE RENDERING - LUDLOW STREET
MI VIDA - EAST MARKET

**PERKINS —
EASTMAN**

05/30/25
REV 2 07/01/25

Z-301



PROPOSED SIGNAGE RENDERING - CHESTNUT WALK AND LUDLOW STREET
MI VIDA - EAST MARKET

**PERKINS —
EASTMAN**

05/30/25
REV 2 07/01/25

Z-302

PROPOSED SIGNAGE SHOP DRAWINGS FOR REFERENCE

Specifications

- 1. Fabricated aluminum sign cabinet to be painted P1 on all visible surfaces.
- 2. Fabricated edge lit aluminum channel letters with custom made faces. Returns to be pained P2 and prismatic faces to be painted P3. Letters to be installed on front of the sign cabinet.

Installation: method of attachment TBD.

NOTE: Concept only. Filed check is required.

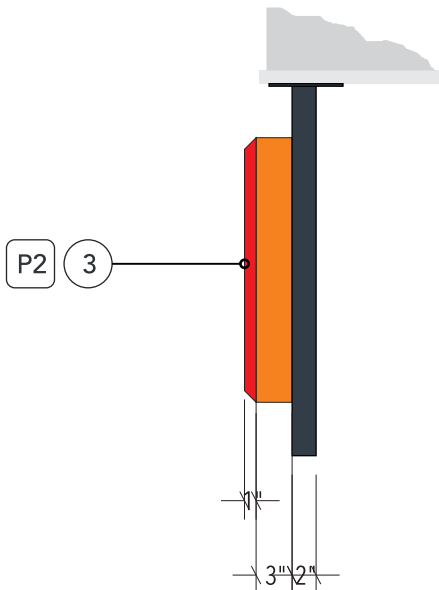
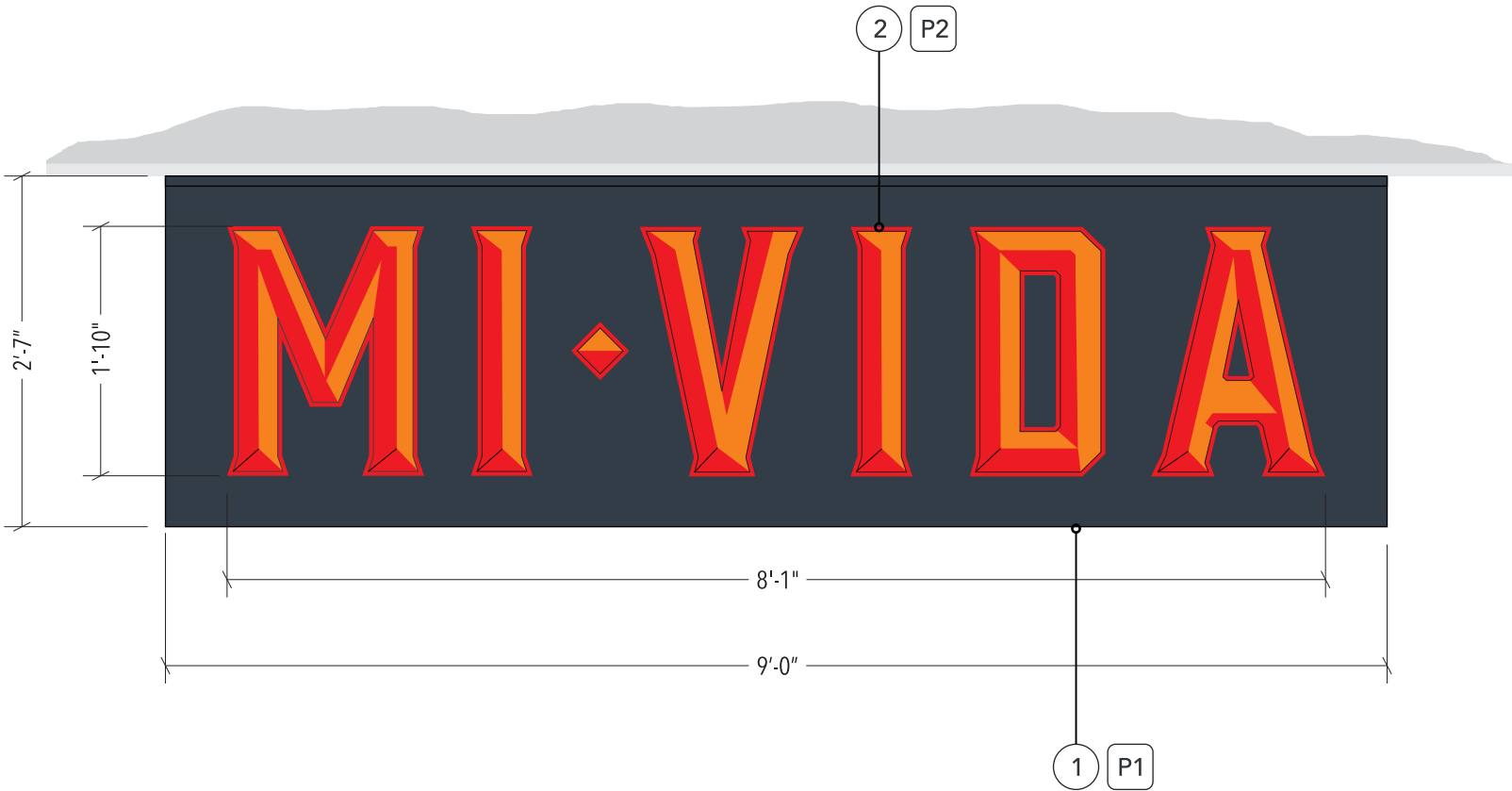
Colors & finishes

- P1. To match building color
- P2. Orange PMS 151C
- P3. Red PMS 485C
- V1. Translucent Red vinyl color to match Red PMS 485C

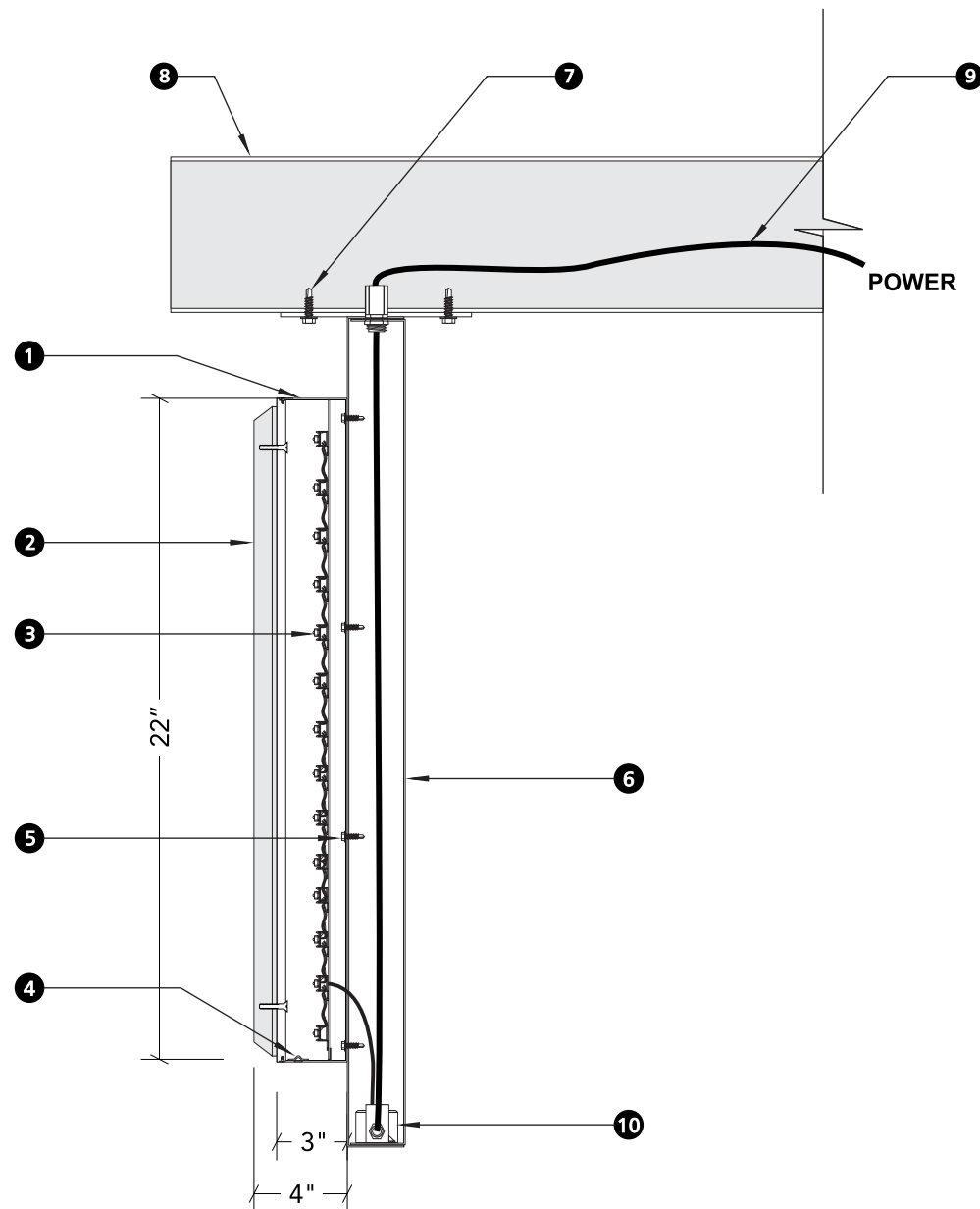


1 Front View
Scale: 3/4" = 1'-0"

2 Side View
Scale: 3/4" = 1'-0"



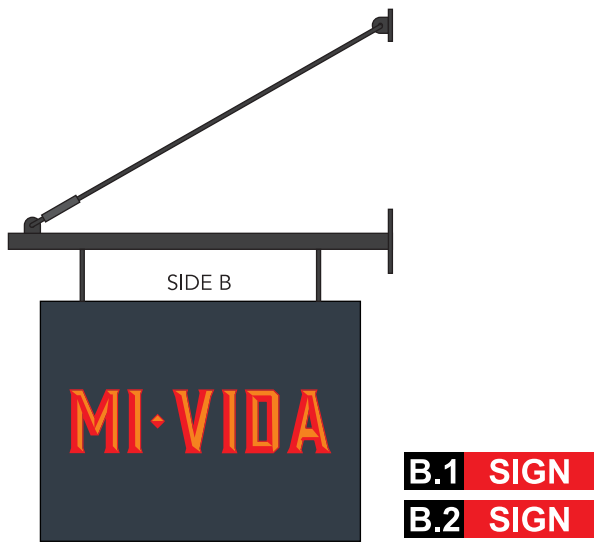
A1 Channel letters - Side View
Scale: 1½" = 1'-0"



Edge-lit Channel Letters | Raceway-Mount
Side Section Detail
Scale: 1½" = 1'-0"

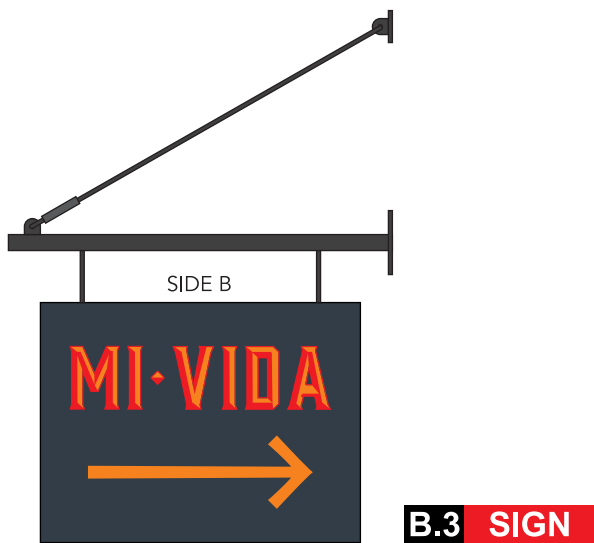
SPECIFICATIONS

- ① **Returns:** stainless steel painted Orange PMS 151C.
- ② **Faces:** stainless steel prismatic letters to painted Red PMS 485C and bolted to translucent acrylic backing.
- ③ **Illumination:** White Warm 3500° LED modules
- ④ **Weep holes:** 1/4" diam. with covers
- ⑤ **Fasteners (letters to sign cabinet):** Self-tapping screws through letter backs
- ⑥ **Sign cabinet:** 2" deep aluminum
- ⑦ **Fasteners (cabinet to ceiling):** Stainless steel self drilling SMS (TBD)
- ⑧ **Existing decorative element:** stainless steel (TBD)
- ⑨ **Primary electrical feed:** Wired to be installation on site by others, coordinated with G.C.
- ⑩ **LED power supplies:** Enclosed in sign cabinet with connections to primary feed made in junction box as needed, coordinated with G.C.

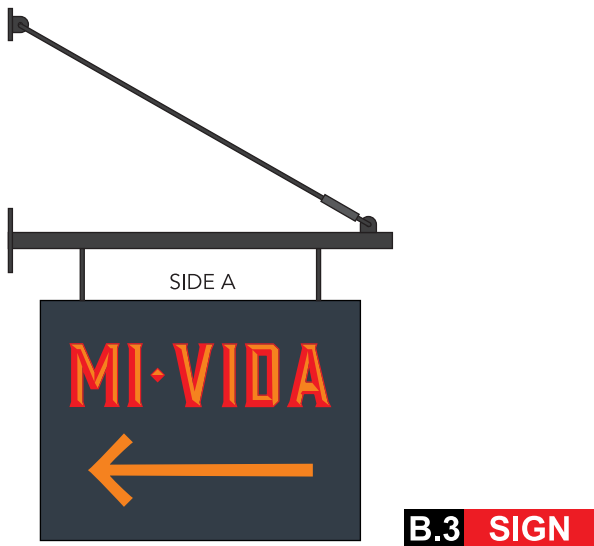


B.1 SIGN

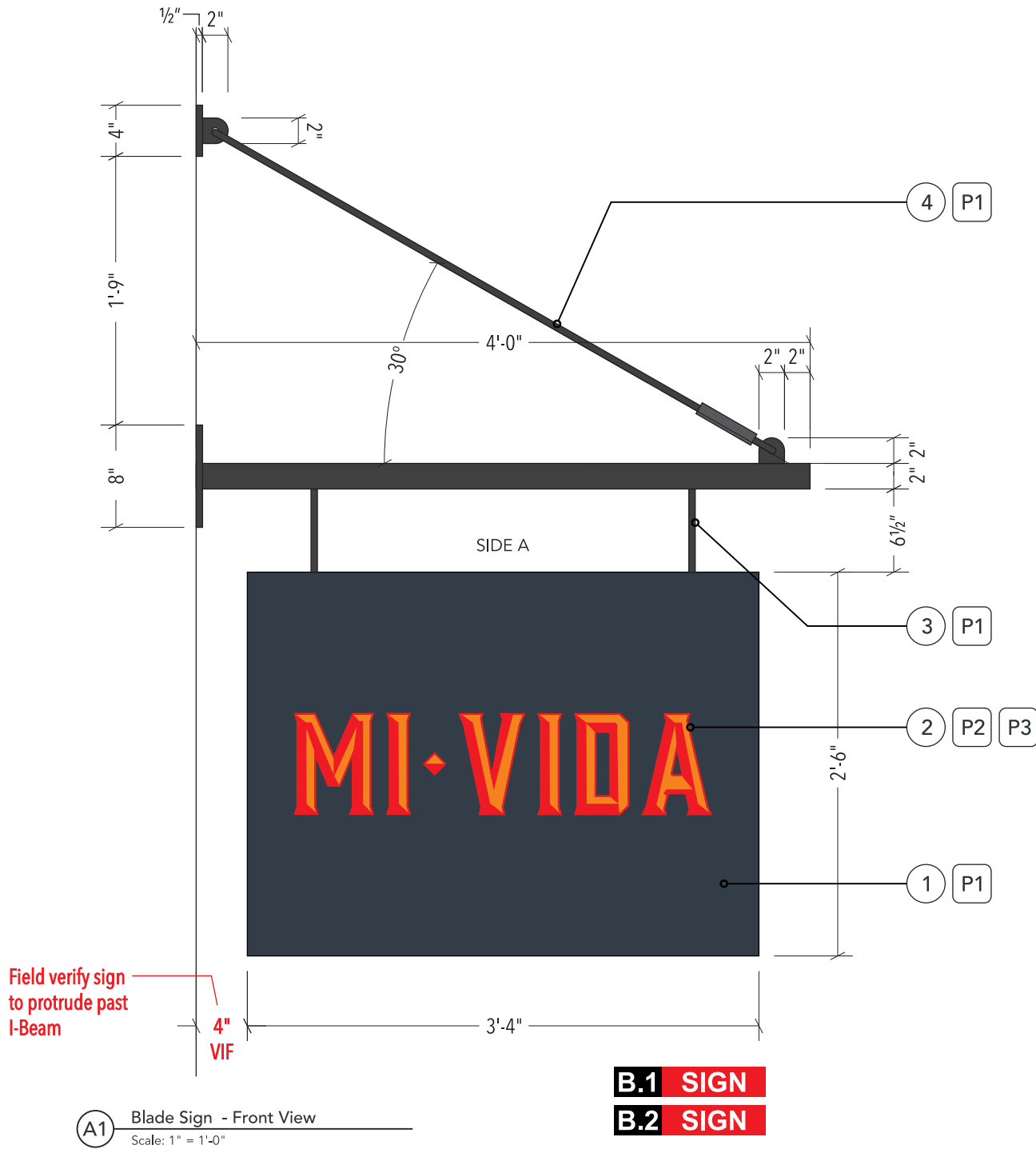
B.2 SIGN



B.3 SIGN



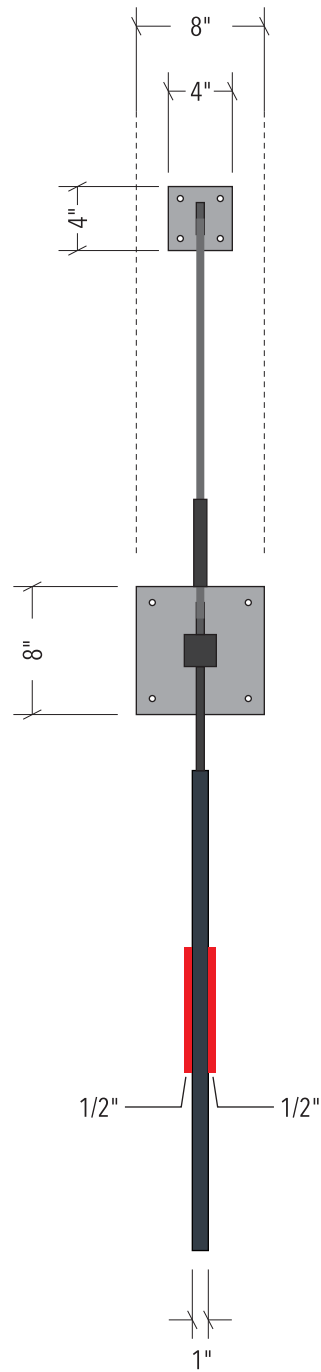
B.3 SIGN



A1 Blade Sign - Front View
Scale: 1" = 1'-0"

B.1 SIGN

B.2 SIGN



BLADE SIGN

QTY: (3X) DOUBLE FACED

B

Specifications

- 1" deep fabricated aluminum frame sign cabinet painted.
- 1/2" thick acrylic copy painted two colors.
- Custom fabricated aluminum sign frame with 1/2" thick aluminum mounting plates painted.
- Rod with turnbuckle assembly (Final Details TBD)

Installation: method of attachment TBD.

NOTE: Concept only. Filed check is required.

Colors & finishes

- P1. To match building color
- P2. Orange PMS 151C
- P3. Red PMS 485C

EXISTING SITE PHOTOS



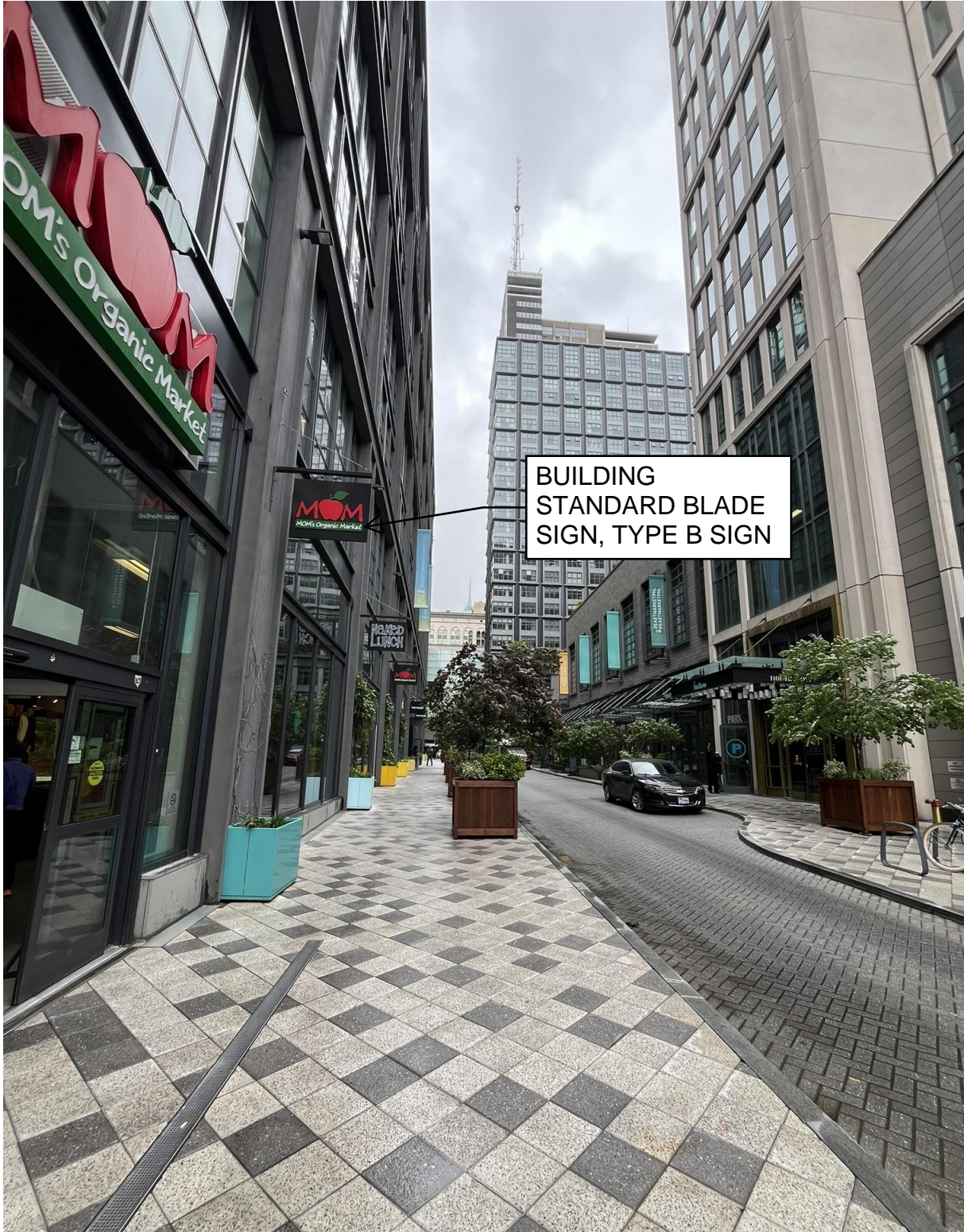
VIEW OF LUDLOW STREET FACADE



VIEW OF CHESTNUT STREET FACADE



VIEW OF CHESTNUT WALK FACADE
AND CLOVER STREET FACADE



BUILDING
STANDARD BLADE
SIGN, TYPE B SIGN

VIEW OF LUDLOW STREET FACADE WITH SITE
STANDARD SIGNAGE