

EZ SIGNS, LLC

1839 Bustleton Pike

Feasterville, PA 19053

P: 1 (866) 349-5444

F: (215) 676-3269

EZ SIGNS LLC
1 (866) FIX-LIGHT

July 1, 2025

Re: Sign Install for TIME MISSION, 1530-32 CHESTNUT ST

Scope of work:

SIGN A - Install one (1) statically LED-lit accessory wall sign 29.813 SQ FT

SIGN C - Install eleven (11) window graphics.

SIGN D - Install two (2) door vinyl graphics 1.5 SQ FT each

Natalya Atroshyna

EZ SIGNS LLC

1839 Bustleton Pike

Feasterville, PA 19053

p. 267- 406 - 0273

e. permits@signsinstall.com

PROJECT SCHEDULE		
SIGN TYPE/ DESCRIPTION:		PG.
A.	ILLUM. CABINET w PUSH-THRU LOGO/LTRS	ONE (1) 3
C.	VINYL GRAPHICS - WINDOWS	ELEVEN (11) 6
D.	VINYL GRAPHICS - DOORS	TWO (2) 7

PROJECT:



1530 CHESTNUT STREET
PHILADELPHIA, PA 19102



1

1



SIGN A - Install one (1) statically LED-lit accessory wall sign 29.813 SQ FT

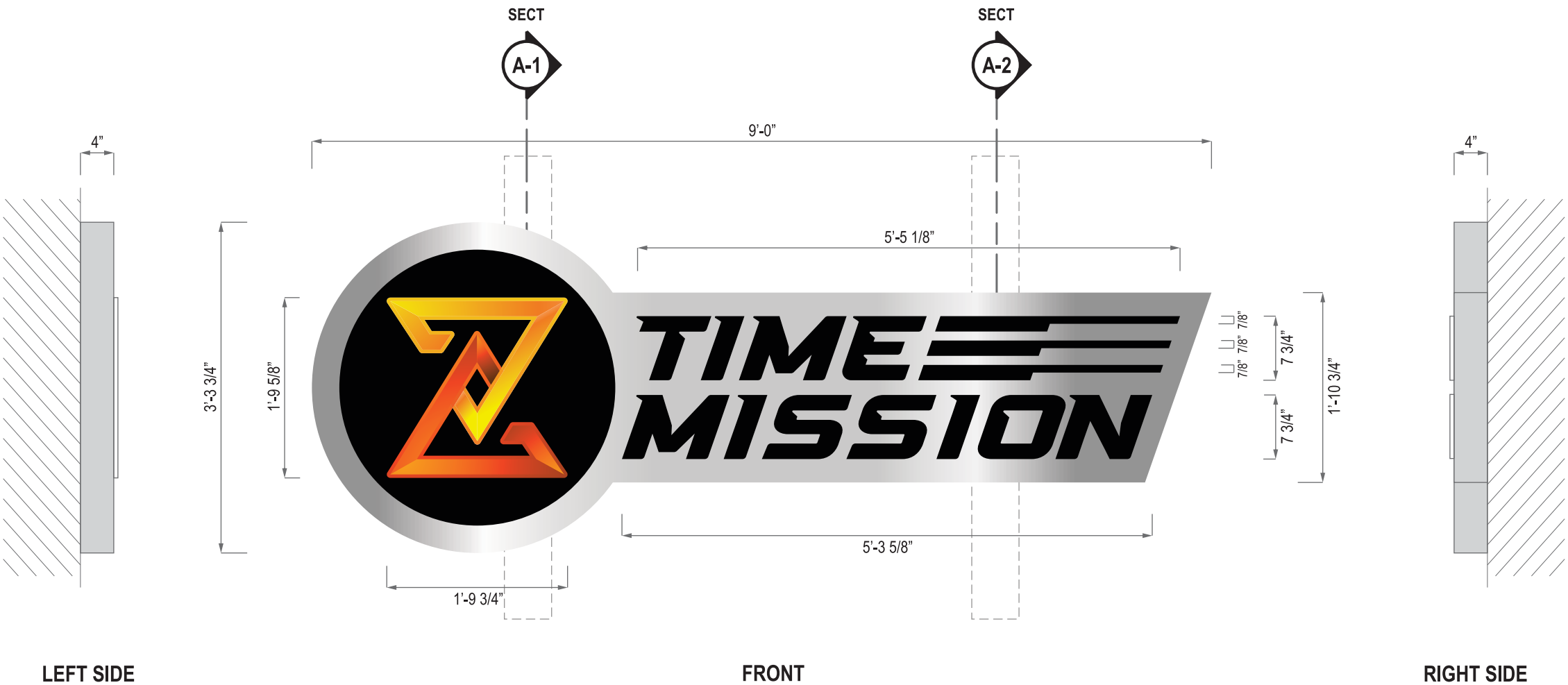
ILLUM. CABINET w PUSH-THRU LOGO/LTRS

SCALE: 3/4"=1'-0"

QTY.: ONE (1)

AREA: 39.75" x 108.0" = 29.813' SQ.FT.

A



- DETAILS**
- CABINET FACES
MATERIAL | ALUM.
COLOR | METALLIC SILVER
- PUSH-THRU
MATERIAL | 3/4" CLEAR ACRYLIC
LTRS & LINES | BLACK OPAQUE | 1ST SURFACE
LOGO | DIGITAL GRAPHIC | 1ST SURFACE
- CABINET RETURNS
3" DEEP
MATERIAL | ALUM.
COLOR | METALLIC SILVER
- ILLUMINATION
TYPE | 6500K WHITE LEDS
POWER SOURCE | INSIDE CABINET
- MOUNTING
FLUSH-MTD w MECHANICAL FASTENERS

ILLUM. CABINET w PUSH-THRU LOGO - SECTION DETAIL

SCALE: 1/8"=1'-0"

A-1

The section detail diagram shows the internal structure of the sign, including the cabinet face, returns, and mounting hardware. It labels various components with callouts A through M, which correspond to the parts list.

A FACE	MATERIAL: 1/8" ALUM. ROUTED WITH LOGO, 4" RETURN	I WIRING	1/2" LIQUID TITE & 1/2" CONNECTOR
COLOR/FINISH: METALLIC SILVER / SATIN		I-D	DISCONNECT SWITCH (SIDE OF CABINET)
CIRCLE: 1ST SURFACE APPLIED, IN FACE		I-E	TO 12V FEED
COLOR INFO: BLACK OPAQUE VINYL		I-G	UL APPROVED LOW VOLTAGE CLASS II WIRING
A-1 BACKUP MOUNTS WITH SILICONE ADHESIVE		I-H	ALL CONNECTIONS TO BE IN WATERPROOF BOXES
A-2 PUSH-THRU: 3/4" CLEAR ACRYLIC w 1/8" 1/8" ROUTED FLANGE		J POWER SUPPLY	
FINISH: POLISHED EDGES		TYPE: LOW VOLTAGE UL APPROVED LED POWER SUPPLY	
A-3 VINYL: 1ST SURFACE APPLIED, IN PUSH-THRU		VOLTAGE: 120V	
COLOR INFO: DIGITALLY PRINTED GRAPHIC		K MOUNTING	SEE MOUNTING NOTE
B RETURNS		M-1	NOT WELDED TO ALUM FLAT BAR
DEPTH: 3"		M-2	3/8" ALL THREAD, NUT & WASHERS
MATERIAL: 1/8" ALUM.		M-3	1/4" x 2" ALUM. FLAT BAR @ CORNERS & CENTERED
COLOR/FINISH: METALLIC SILVER / SATIN		M-4	ON FRAME (TOP & BOTTOM). BAR WELDS TO FRAME
C BACKS			FLUSH MOUNTING SCREWS
MATERIAL: 1/8" ALUM.			
D ILLUMINATION			
TYPE: LEDS, w BACK ON LEXAN & FRAME RETURNS			
COLOR: 6500K WHITE			
E INSIDE OF BOX			
COLOR: WHITE			
F FRAME			
MATERIAL: 2" x 2" ALUM. ANGLE, WELDED TO BACK			
G CORNER DETAIL			
K-1: RETURN OF 2" ANGLE NOTCHED @ EACH CORNER			
K-2: 1/4" THK. ALUM. FLAT BAR WELDS TO ANGLE FOR REINFORCEMENT OF EACH CORNER			
K-3: 1/4" THK. ALUM. ANGLE VERSALORS TO INSIDE OF PAN FACE, FOR REINFORCEMENT OF EACH CORNER			
H WEEP HOLES			
1/4" Ø HOLE w LIGHT-BLOCKING COVER			

120V AC

1. CUSTOMER G.C. TO PROVIDE ADEQUATE WOOD OR MET. BLOCKING IN CORRELATION W/ FACE FRAMING AS REQUIRED. INSTALLER IS TO TEST & PROVIDE THE PROPER NON-CORROSIVE MOUNTING HARDWARE TO ENSURE SAFE INSTALLATION. ALL EXTERIOR EXPOSED FASTENERS TO BE WATERPROOF. INSTALLATION TO MEET CURRENT N.E.C. UL LOCAL CODES. LOCATION OF THE DISCONNECT SWITCH AFTER INSTALLATION SHALL COMPLY WITH ARTICLE 480-406 (1) OF THE NATIONAL ELECTRICAL CODE.

ELECTRICAL

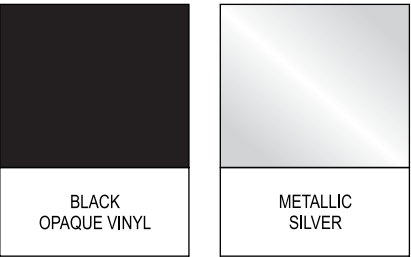
1. ALL ELECTRICAL COMPONENTS TO BE UL APPROVED. CUSTOMER IS RESPONSIBLE FOR ONE (1) 120V 20A DEDICATED CIRCUIT w/ GROUNDING SIGN TO REMAIN w/ SIGN. THIS SIGN IS INTENDED TO BE INSTALLED IN ACCORDING w/ THE REQUIREMENTS OF ARTICLE 480-406 (1) OF THE NATIONAL ELECTRICAL CODE AND/OR OTHER APPLICABLE LOCAL CODES. THIS INCLUDES PROPER GROUNDING & BONDING OF THE SIGN.

FABRICATOR

1. PLACEMENT OF LIGHTING ELEMENTS FOR OPTIMUM ILLUMINATION OF SIGN TO BE DETERMINED IN PRODUCTION. 2. MANUFACTURER'S U.L. LABELS TO BE APPLIED & VISIBLE FROM THE GROUND, LOCATED ON THE LAST CHANNEL LETTER OR END OF THE SIGN REMAINING STANDING SIGN.

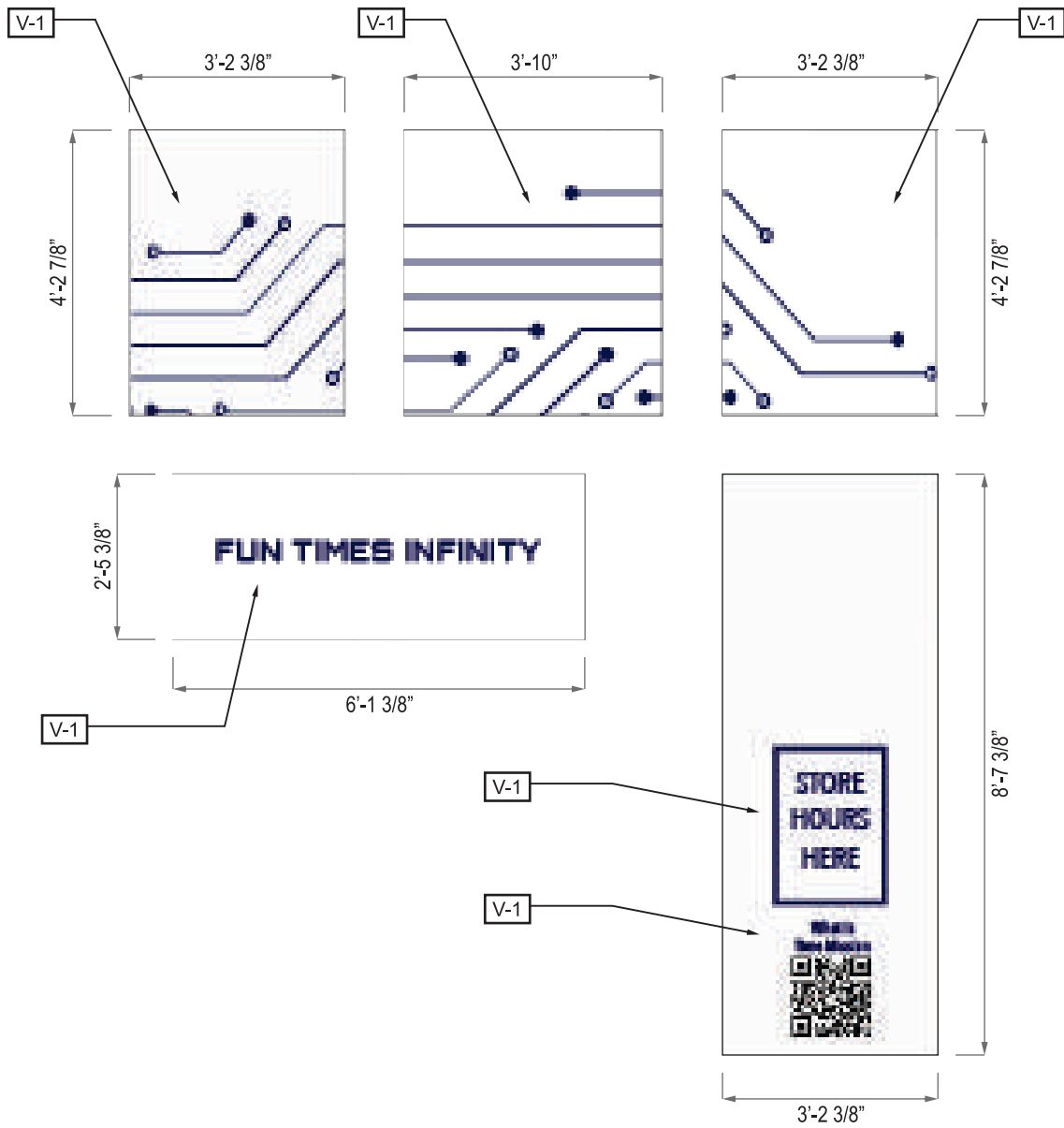
UL

ALL ELECTRICAL COMPONENTS ARE TO BE UL APPROVED

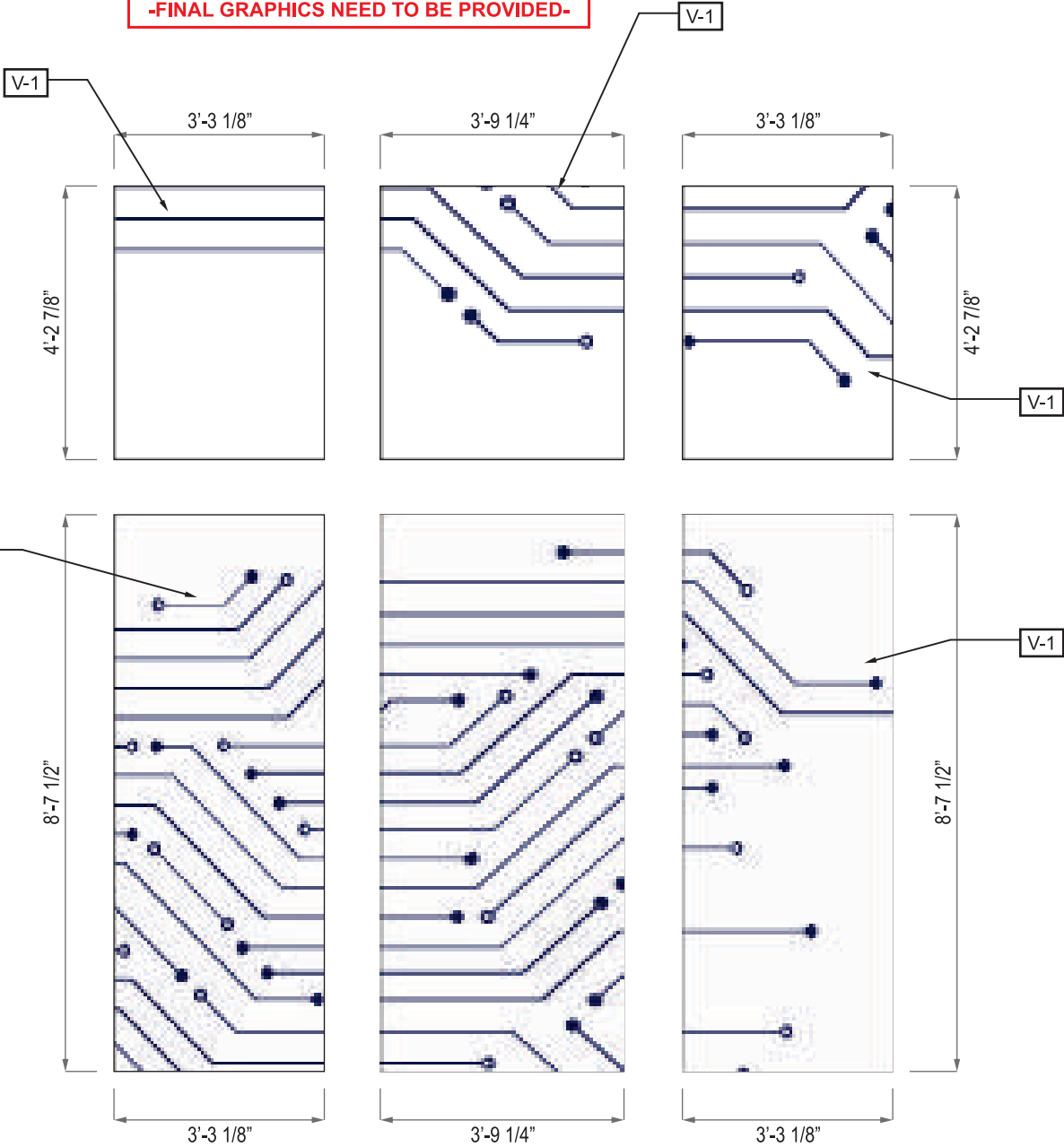


SIGN C - Install Eleven (11) window vinyl graphics.

ARTWORK SHOWN FOR DIGITAL PRINTS
FOR VISUAL PURPOSES ONLY
-FINAL GRAPHICS NEED TO BE PROVIDED-



FRONT



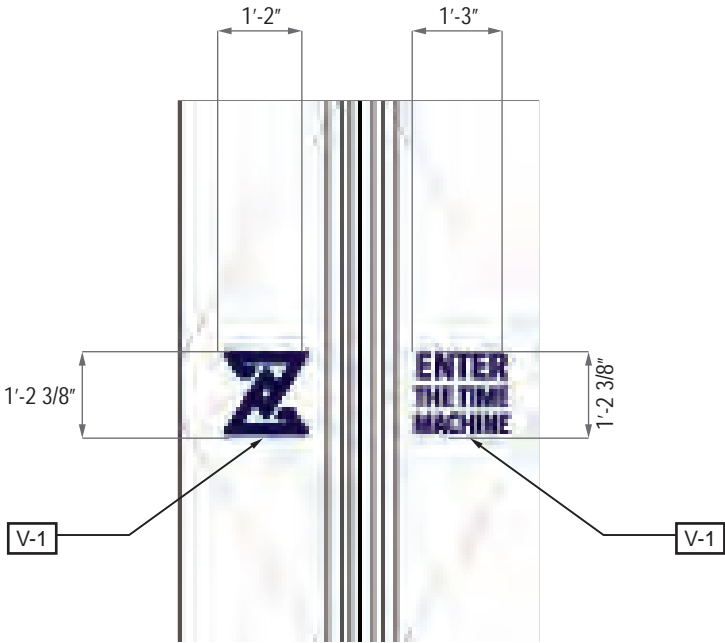
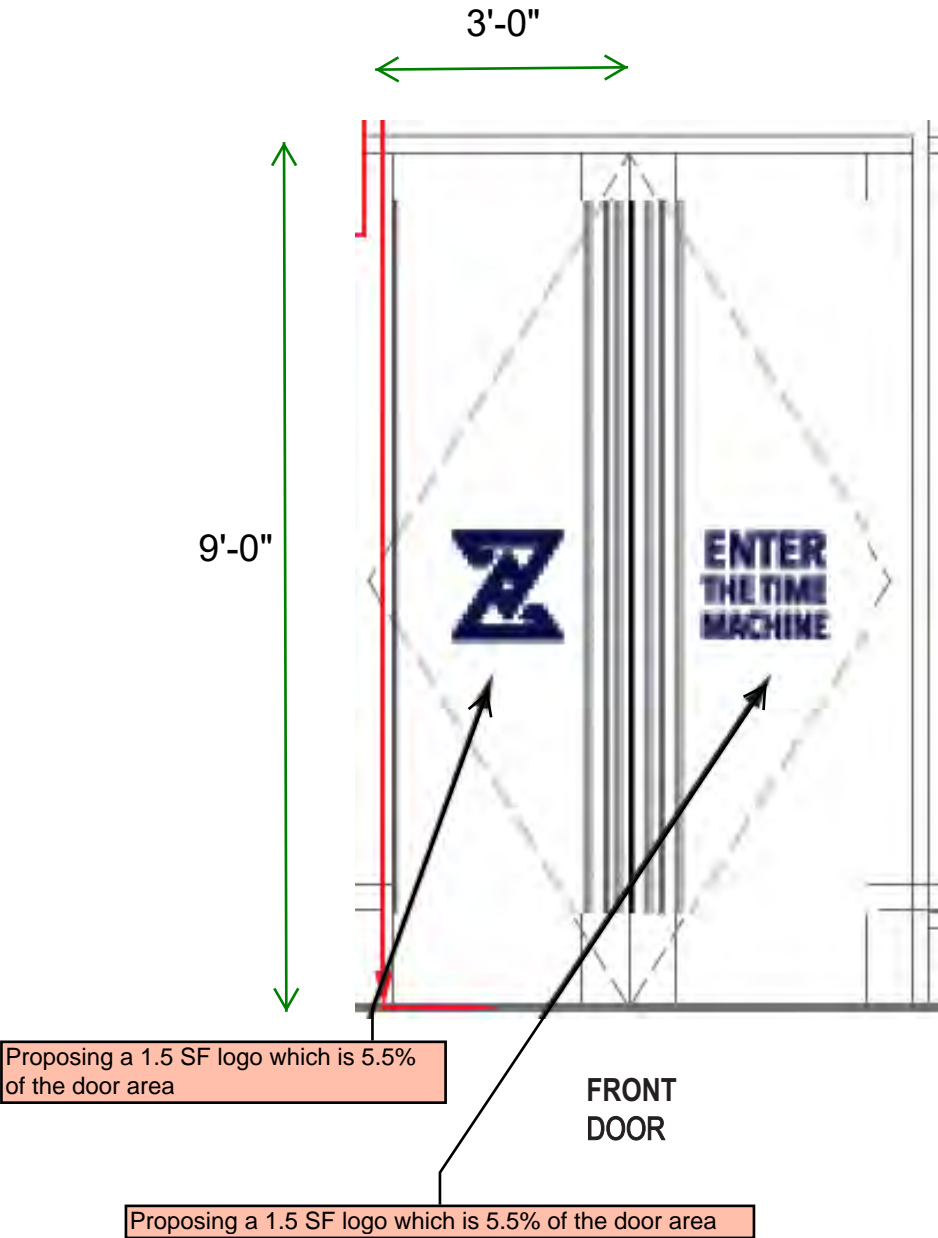
VERIFY ALL DIMENSIONS
WITH INITIAL FIELD SURVEY

VINYL MATRIX	
V-1 VINYL:	DIGITALLY-PRINTED GRAPHICS
COLOR:	AS SHOWN, V.I.F.
FINISH	SATIN
APPLICATION:	1st SURFACE ADHESIVE
SURFACE:	GLASS, V.I.F.

SIGN D - Install two (2) door vinyl graphics 1.5 SQ FT each

1.5 SQ FT each

ARTWORK SHOWN FOR DIGITAL PRINTS
FOR VISUAL PURPOSES ONLY
-FINAL GRAPHICS NEED TO BE PROVIDED-



VINYL MATRIX	
V-1	VINYL: DIGITALLY-PRINTED GRAPHICS
	COLOR: AS SHOWN, V.I.F.
	FINISH: SATIN
	APPLICATION: 1st SURFACE ADHESIVE
	SURFACE: GLASS, V.I.F.



← TOWARDS CHESTNUT

16TH STREET

TOWARDS SANSOM →

16TH STREET EXISTING CONDITIONS
1530 CHESTNUT STREET

**PERKINS —
EASTMAN**



16TH STREET LOOKING SOUTH

16TH STREET EXISTING CONDITIONS

1530 CHESTNUT STREET



16TH STREET LOOKING NORTH

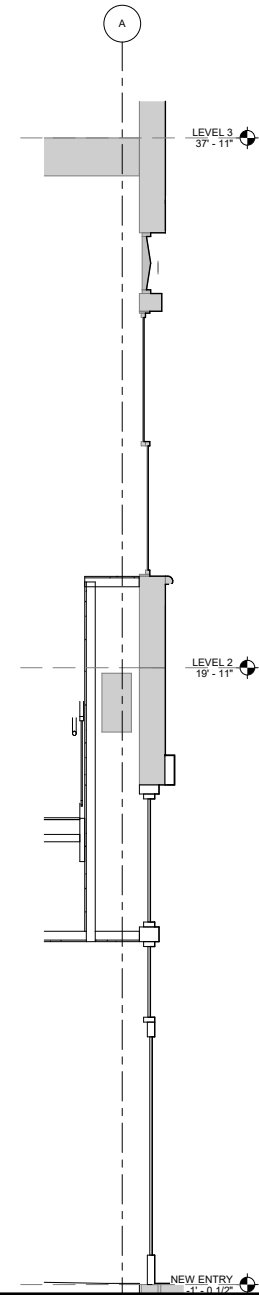
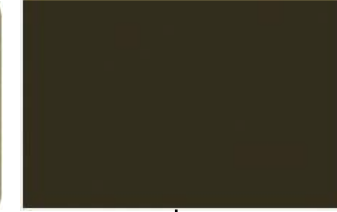
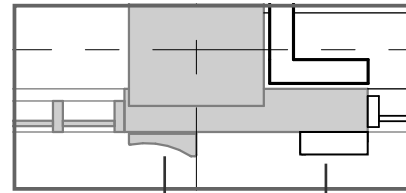
16TH STREET EXISTING CONDITIONS

1530 CHESTNUT STREET

PLAN DETAIL

PTD ALUM - LT BRONZE

PTD ALUM - MD BRONZE



EXISTING WINDOWS
AND TRIM

EXISTING STONE TO
REMAIN

DARK BRONZE PAINTED
ALUMINUM DECORATIVE
METAL SURROUND

CLEAR INSULATED GLASS

MEDIUM BRONZE PAINTED
ALUMINUM STOREFRONT
SURROUND

LIGHT BRONZE
PAINTED ALUMINUM
STOREFRONT FRAME

DARK BRONZE PAINTED
ALUMINUM DECORATIVE
METAL SURROUND

STONE BASE TO
REMAIN

EXISTING STONE TO
REMAIN

STONE PEDESTAL

EXISTING DARK GRANITE BASE

EXISTING LIGHT BRONZE
STOREFRONT FRAME

FACADE DESIGN
1530 CHESTNUT STREET

**PERKINS —
EASTMAN**

01/03/25



← TOWARDS CHESTNUT

16TH STREET

TOWARDS SANSOM →

16TH STREET STREET ELEVATIONS
1530 CHESTNUT STREET

**PERKINS —
EASTMAN**



Proposed
NEW
Entrance.





Time Mission
1530 CHESTNUT ST

← 1600 W
Stock Exchange Pl

TOW AWAY ZONE 888-591-3636
NO STOPPING
ANY TIME

←
MON-FRI 4:00PM-6:30PM
RESTRICTED HOURS
→

LOADING ONLY
30 MIN LIMIT
MON-FRI 8:00AM-4:00PM
6:30PM-10:00PM
SAT-SUN 8:00AM-10:00PM
→

CONTRACTOR PLACED, NOT VALID
ON THIS BLOCK



Time Mission
1530 CHESTNUT ST



**Time Mission
1530 CHESTNUT ST**



Time Mission
1530 CHESTNUT ST



Time Mission
1530 CHESTNUT ST



Time Mission
1530 CHESTNUT ST



Time Mission
1530 CHESTNUT ST



Time Mission
1530 CHESTNUT ST



Time Mission
1530 CHESTNUT ST



Time Mission
1530 CHESTNUT ST



Time Mission
1530 CHESTNUT ST