



# THE SCHOOL DISTRICT OF PHILADELPHIA

To the Logan Art Commission or Whom It May Concern,

This letter is to confirm that interior site lighting is not included in the scope of the current project at Logan School, located at 1700 Lindley Avenue, Philadelphia, PA 19141.

The scope of this project is limited to the addition of new amenities for gathering, teaching, and play. Planned improvements include the removal of existing asphalt paving to make way for planted rain gardens and subsurface stormwater storage, enabling the site to capture and manage runoff effectively. The project will also incorporate significant depaving, new planting beds, shade trees, and the installation of new play structures.

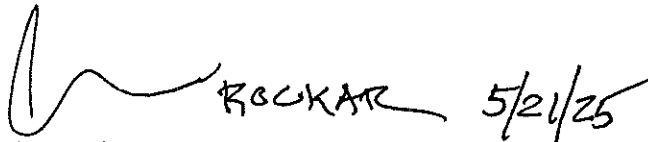
While there is currently no demand for bike racks, the District has bike racks available for installation should a need arise through the school's new bicycle education program.

The District's schools and campuses are designed to serve our school community during the school day and during appropriate, age-specific hours for elementary, middle, and high school students. We encourage our elementary school families to enjoy the schoolyards during appropriate daylight hours. However, lighting is intentionally excluded from schoolyard redesigns, as it encourages nighttime activity, which is not aligned with the intended use of these spaces. Notably, most vandalism occurs during nighttime hours, further reinforcing the decision not to include lighting.

Please note that this project does not include any work related to interior lighting systems or site lighting design, upgrades, or modifications.

This clarification is provided to ensure consistency in documentation and alignment among all project partners and reviewing agencies. If further information or documentation is needed, please feel free to contact our office.

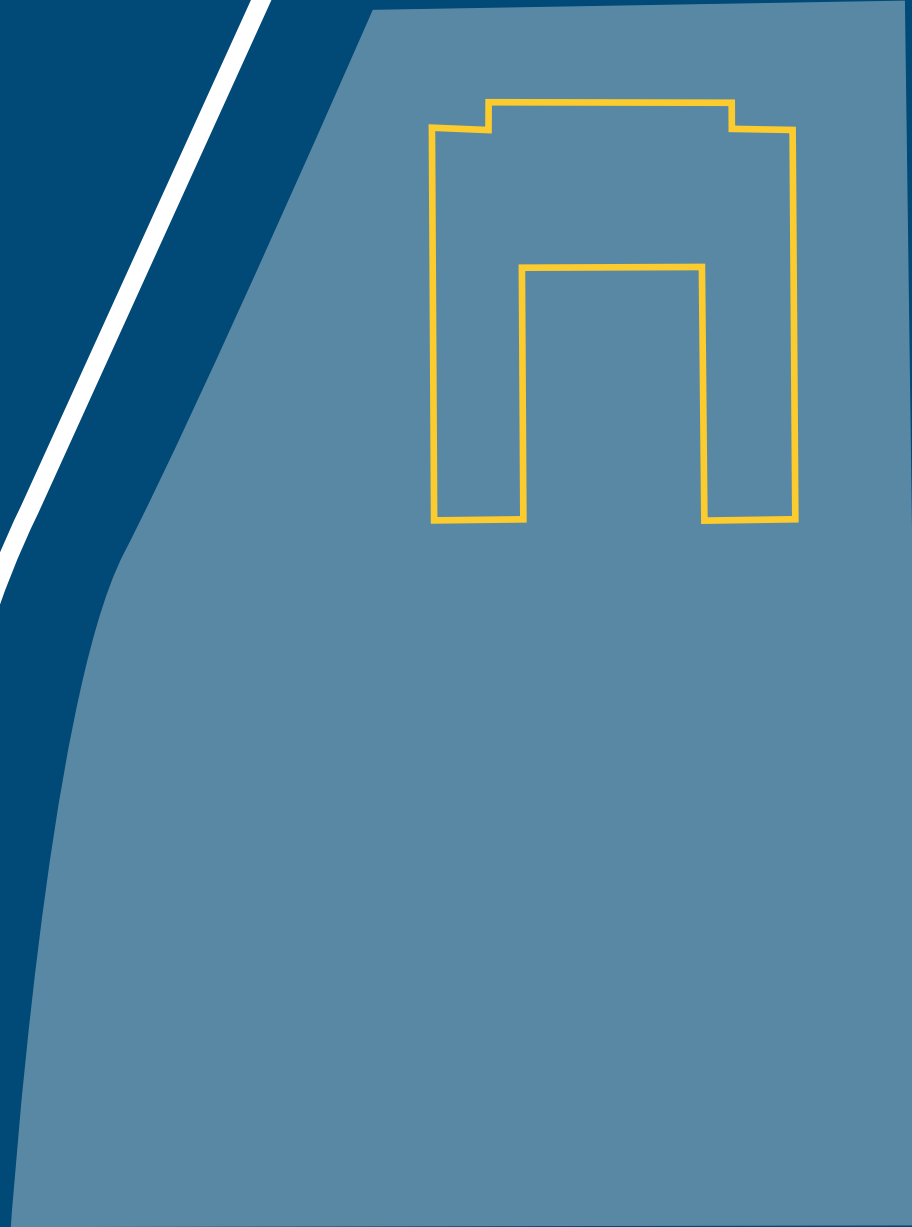
Thank you for your attention.



Jim Rockar  
Design Manager – Capital Programs  
The School District of Philadelphia  
[jrockar@philasd.org](mailto:jrockar@philasd.org)  
(215)-400-5241

# LOGAN ELEMENTARY SCHOOLYARD IMPROVEMENT

ART COMMISSION CONCEPT PLAN REVIEW



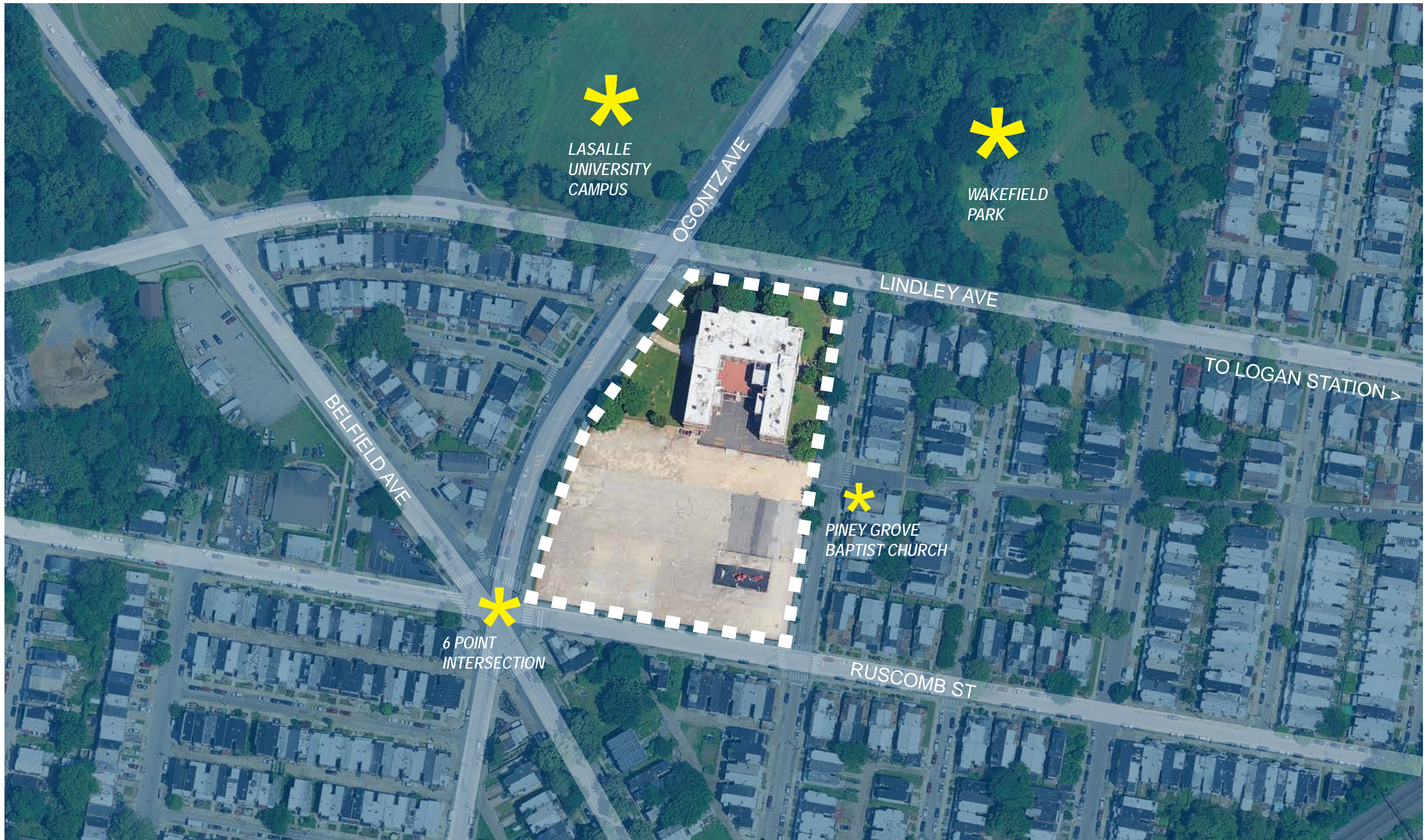
**James Logan School**



**TRUST FOR  
PUBLIC  
LAND™**

**akrf**





neighborhood context



James Logan School



TRUST FOR  
PUBLIC  
LAND™

akrf





**existing conditions**



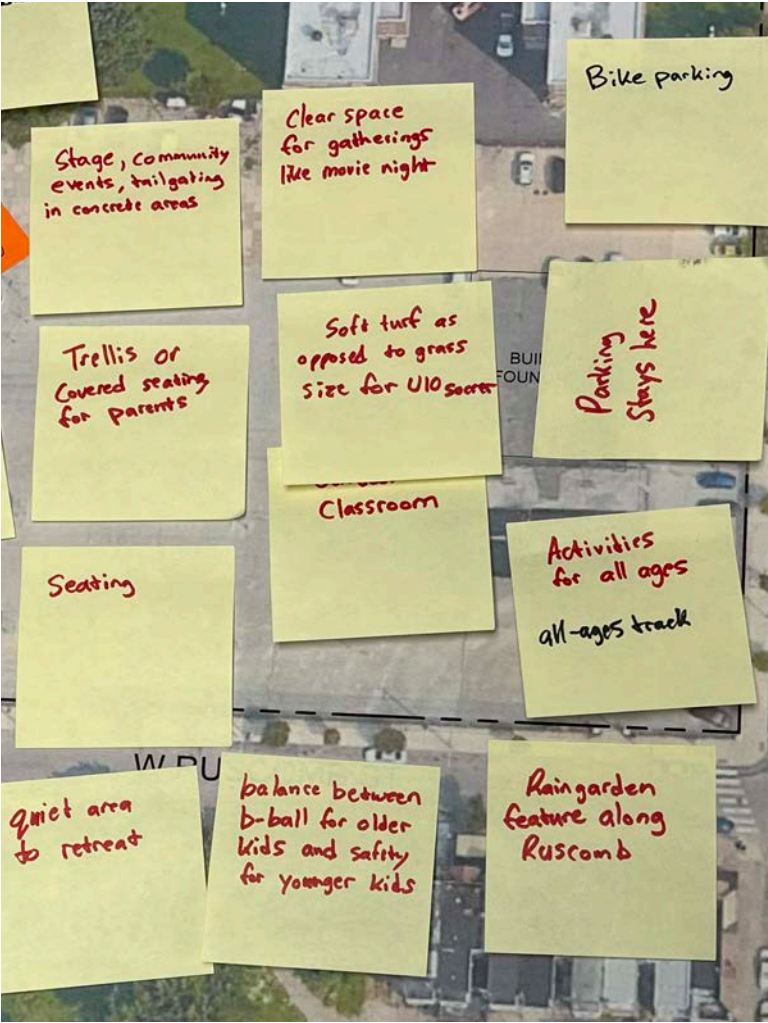
**James Logan School**



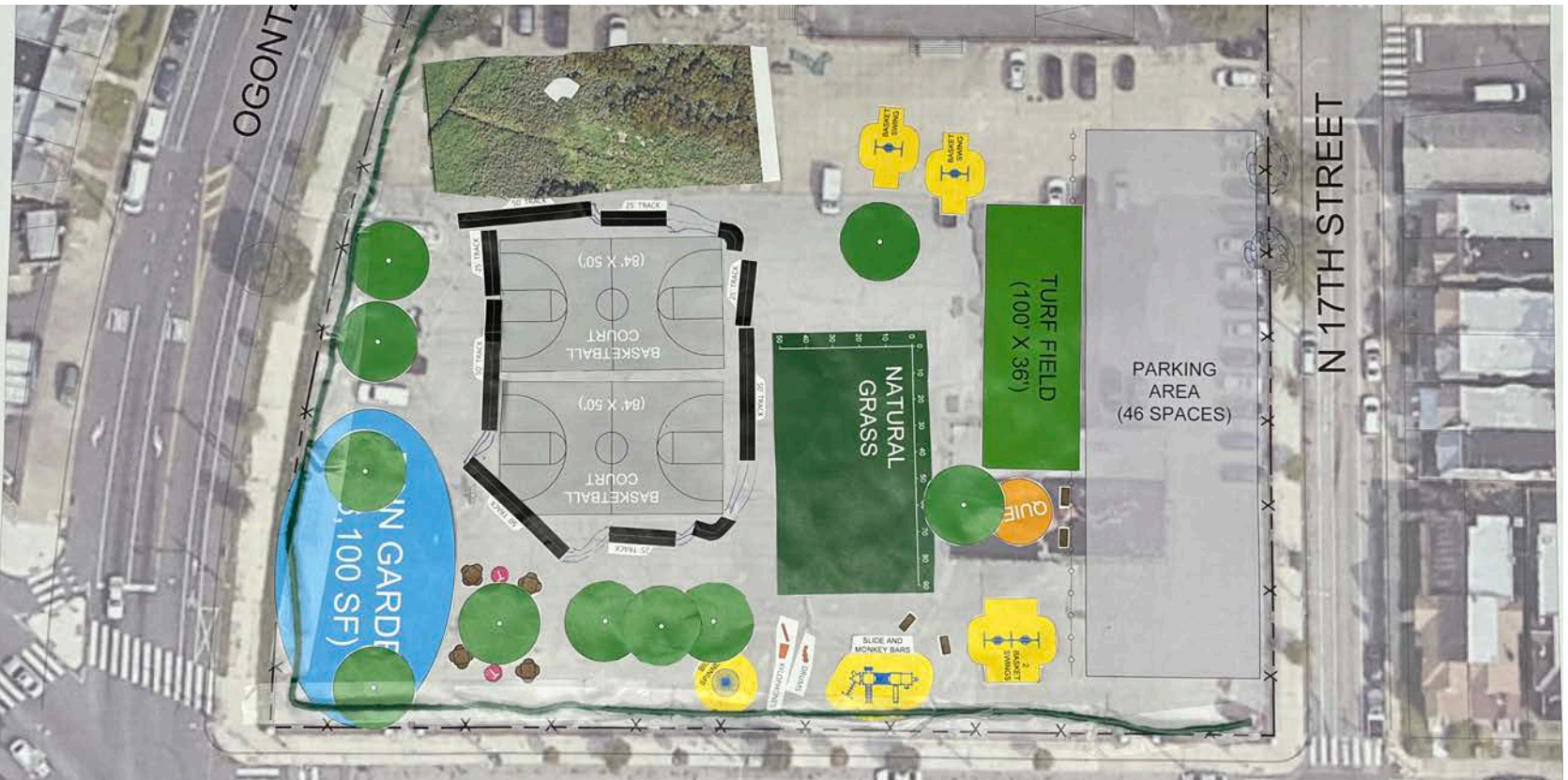
**TRUST FOR  
PUBLIC  
LAND™**

**akrf**









student participatory design



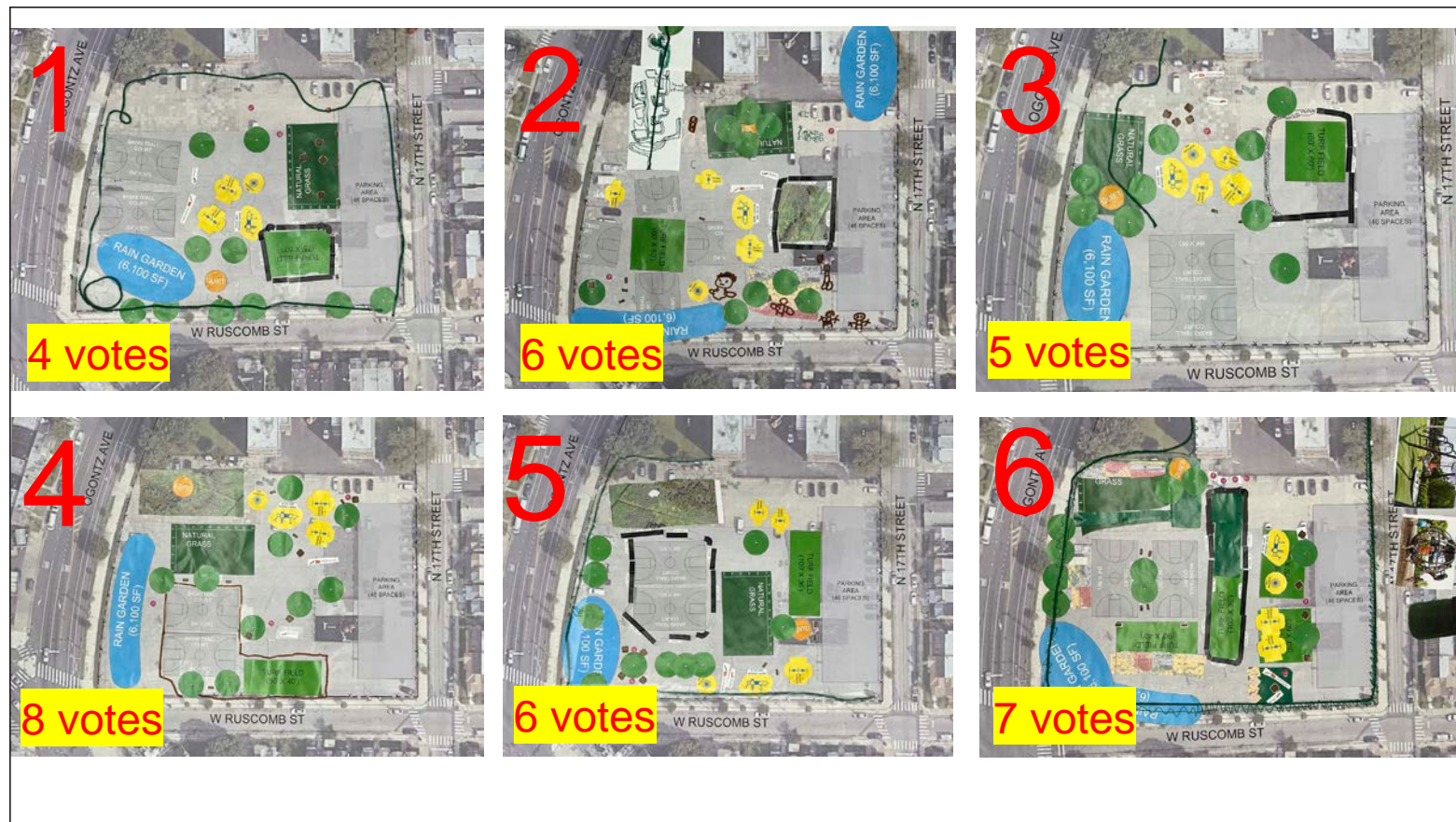
James Logan School



TRUST FOR  
PUBLIC  
LAND™

akrf





4

6

- Prefer this play equipment arrangement but needs more space away from building
- Want a nature trail – they like the concepts from teams 2 and 3 as well as this one
- Appreciate all the nature/green
- Prefer this basketball placement (though Mr. Eli thinks closer to the edge is better for community access)



design process



James Logan School



TRUST FOR  
PUBLIC  
LAND™

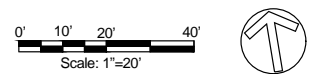
akrf



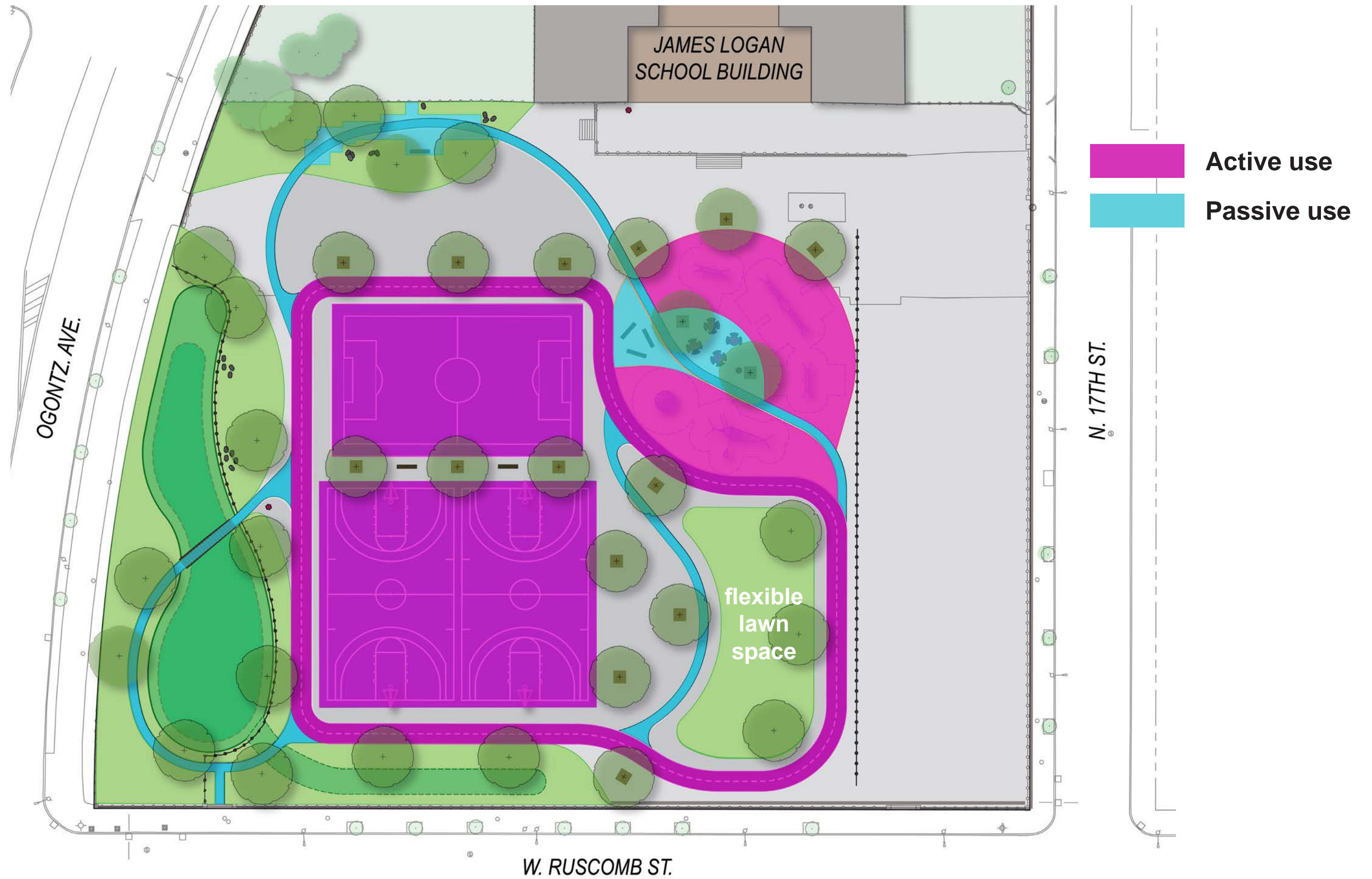


### LEGEND

- ① Rain Garden
- ② 4' Wide Pedestrian Footbridge
- ③ Site Access
- ④ 8' Wide Painted Athletic Track
- ⑤ 4' Wide Painted Nature Trail
- ⑥ Quiet Area with Seating
- ⑦ Safety Surface
- ⑧ Single Basket Swing
- ⑨ Double Basket Swing
- ⑩ Spinner
- ⑪ Climber
- ⑫ Seating Area
- ⑬ Picnic Area
- ⑭ 4' High Fence
- ⑮ Flexible Space for School Use
- ⑯ Multi-game Court
- ⑰ Basketball Courts
- ⑱ Bio-swale
- ⑲ Lawn
- ⑳ Landscape Boulders (typ.)
- ㉑ Low Rain Garden Fence
- ㉒ Trash Receptacle (typ.)
- ㉓ Shade Tree (typ.)
- ㉔ Asphalt Curb/Berm







programming



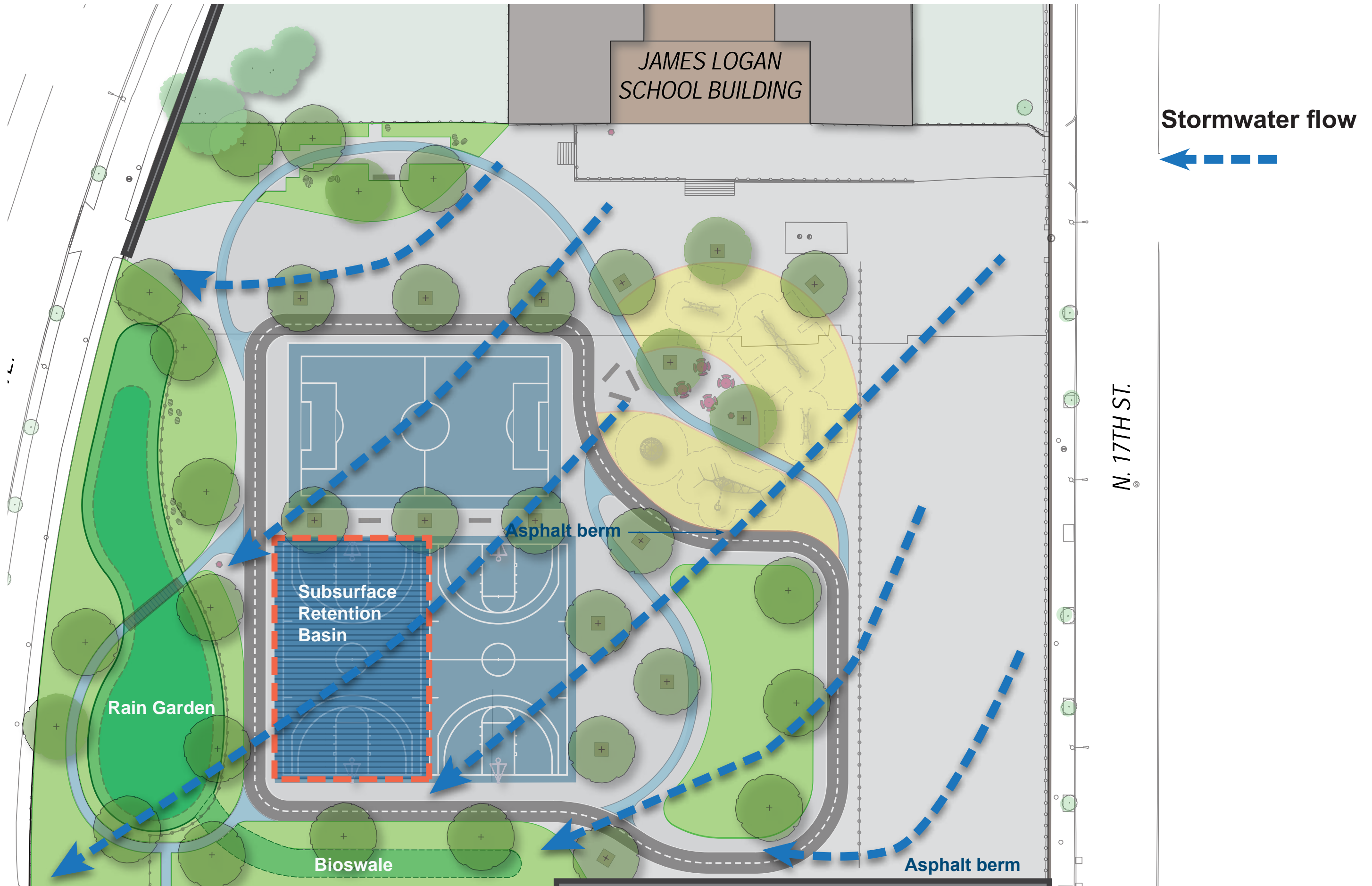
James Logan School



TRUST FOR  
PUBLIC  
LAND™

akrf





**stormwater management**



**James Logan School**



**TRUST FOR  
PUBLIC  
LAND™**

**akrf**





*Betula nigra*  
River Birch



*Quercus bicolor*  
Swamp Oak



*Liquidambar styraciflua*  
Sweet Gum



*Amelanchier arborea*  
Shadblow



*Cladrastris kentukea*  
Yellowwood



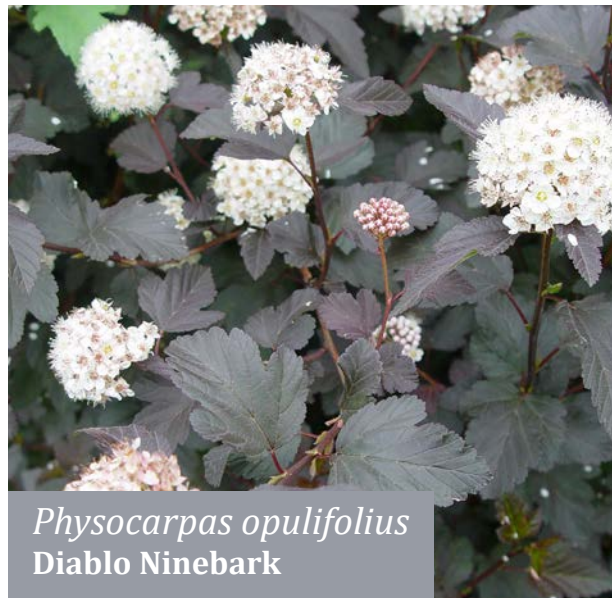
*Juniperus virginiana* 'Gray Owl'  
Gray Owl Juniper



*Aronia melancarpa*  
Black Chokeberry



*Viburnum dentatum*  
Arrowwood Viburnum



*Physocarpas opulifolius*  
Diablo Ninebark



*Cornus sericea*  
Redosier Dogwood



*Amsonia hubrectii*  
Arkansas Bluestar



*Chelone glabra*  
Turtle Head



*Packera obovata*  
Round-leaved Ragwort



*Hibiscus moscheuto* 'Luna Red'  
Luna Red Hibiscus



*Echinacea purpurea*  
Purple Coneflower





birds eye view



James Logan School



TRUST FOR  
PUBLIC  
LAND™

akrf





existing perspective view



James Logan School



TRUST FOR  
PUBLIC  
LAND™

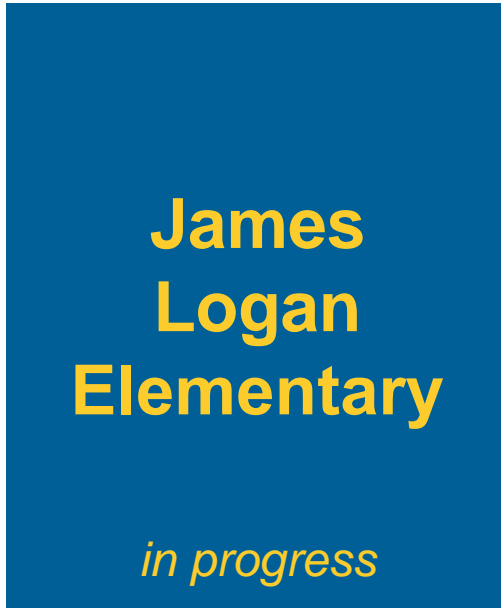
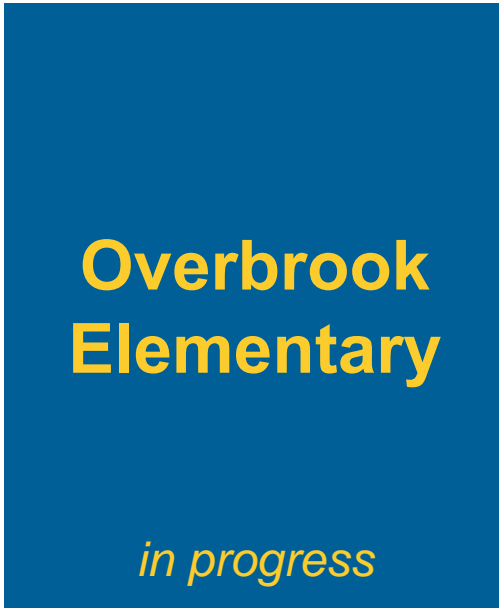
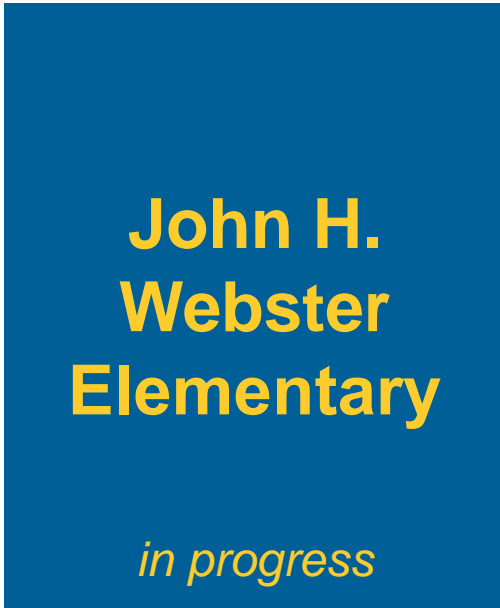
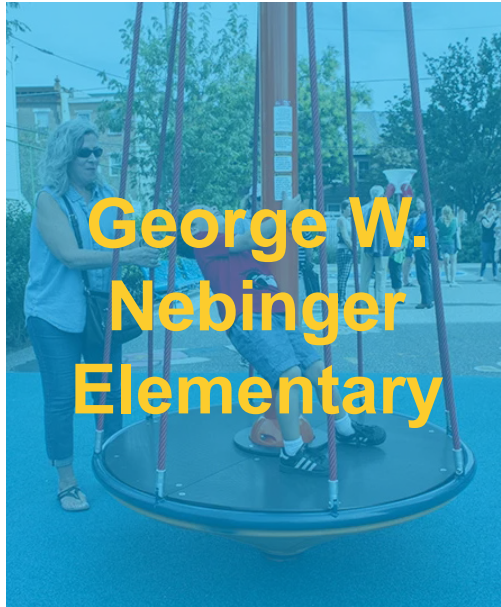
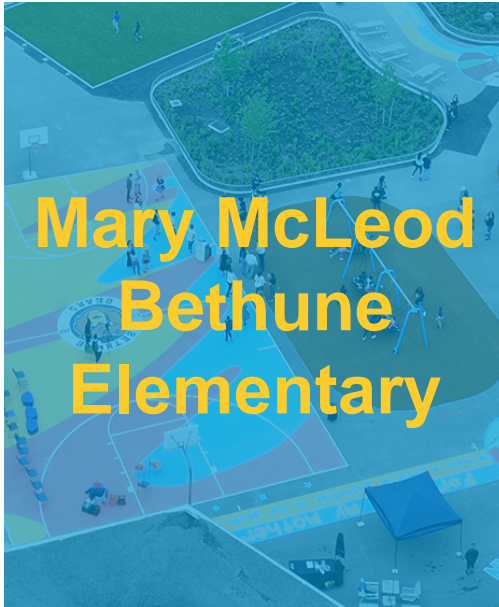
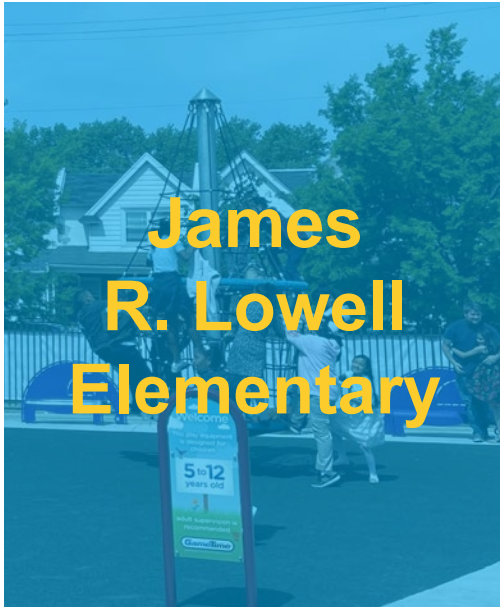
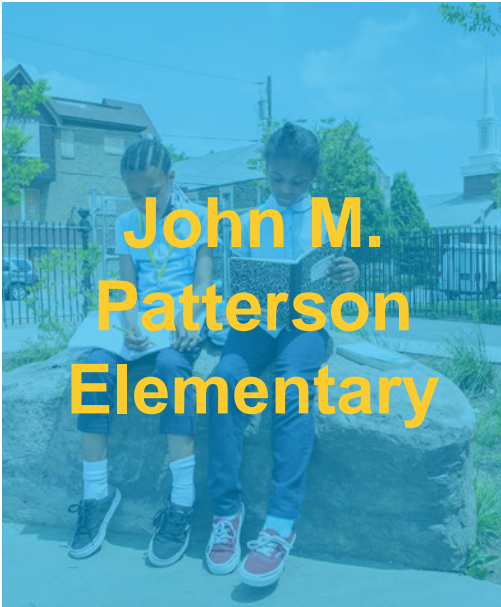
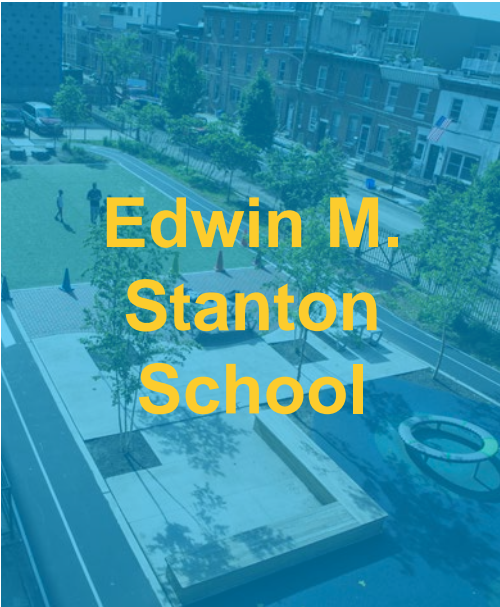
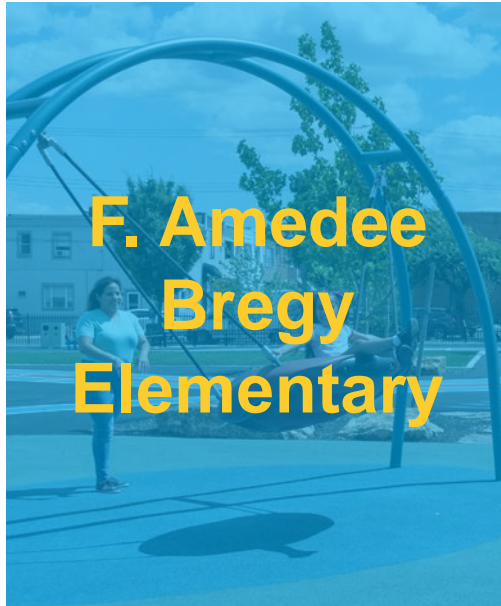
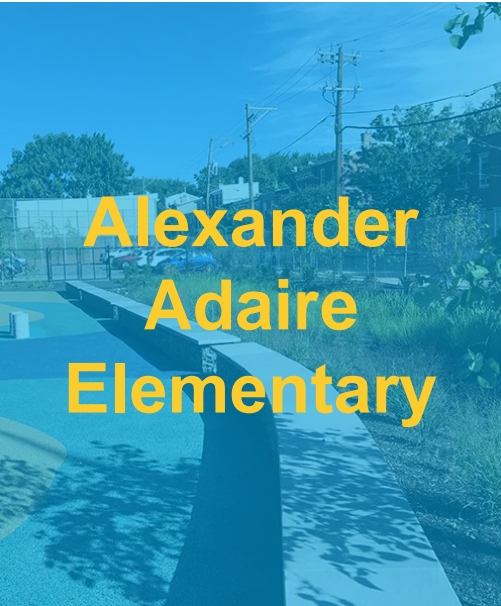
akrf





proposed perspective view





**TPL Philadelphia projects**



**James Logan School**



**TRUST FOR PUBLIC LAND™**

**akrf**





**Bregy Elementary School**



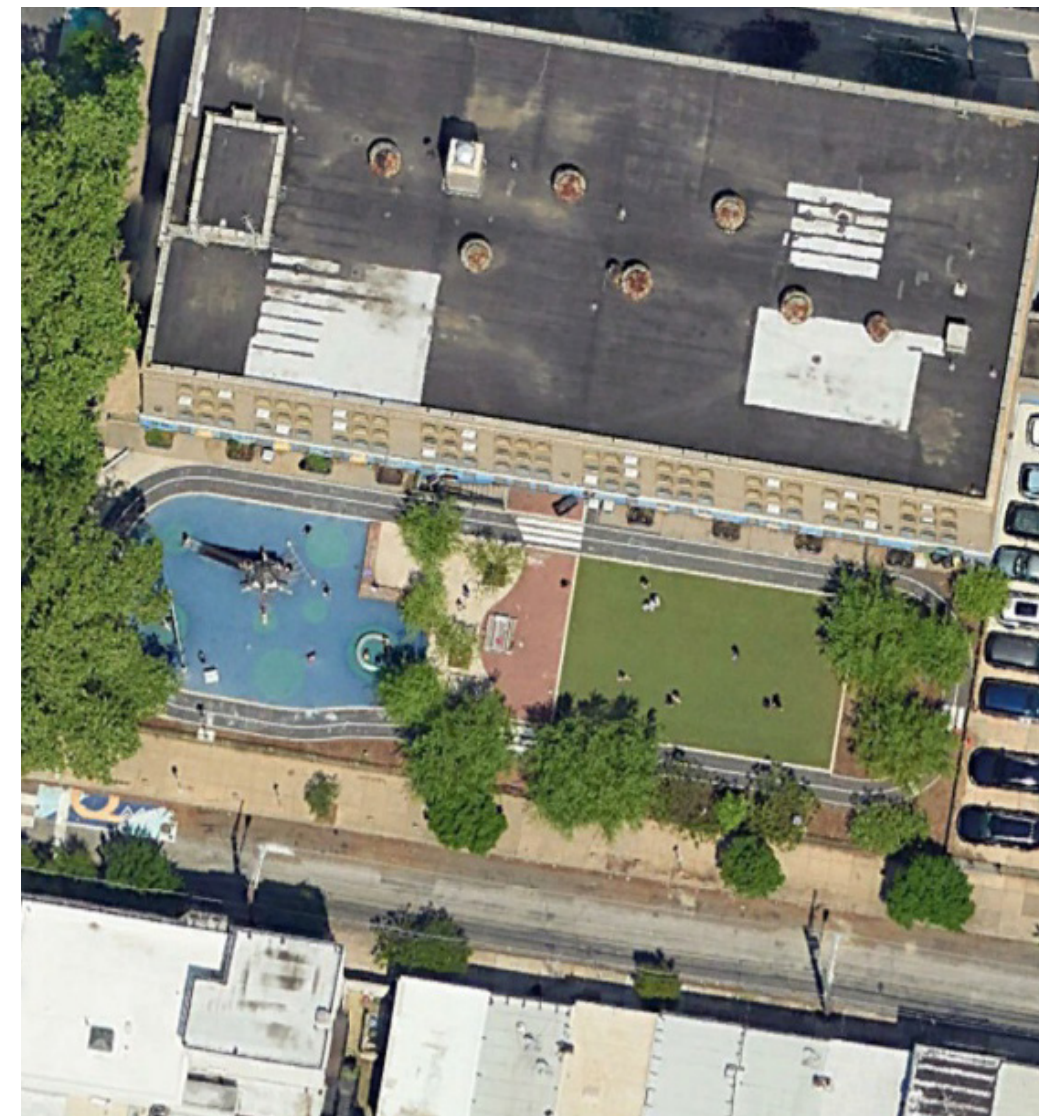
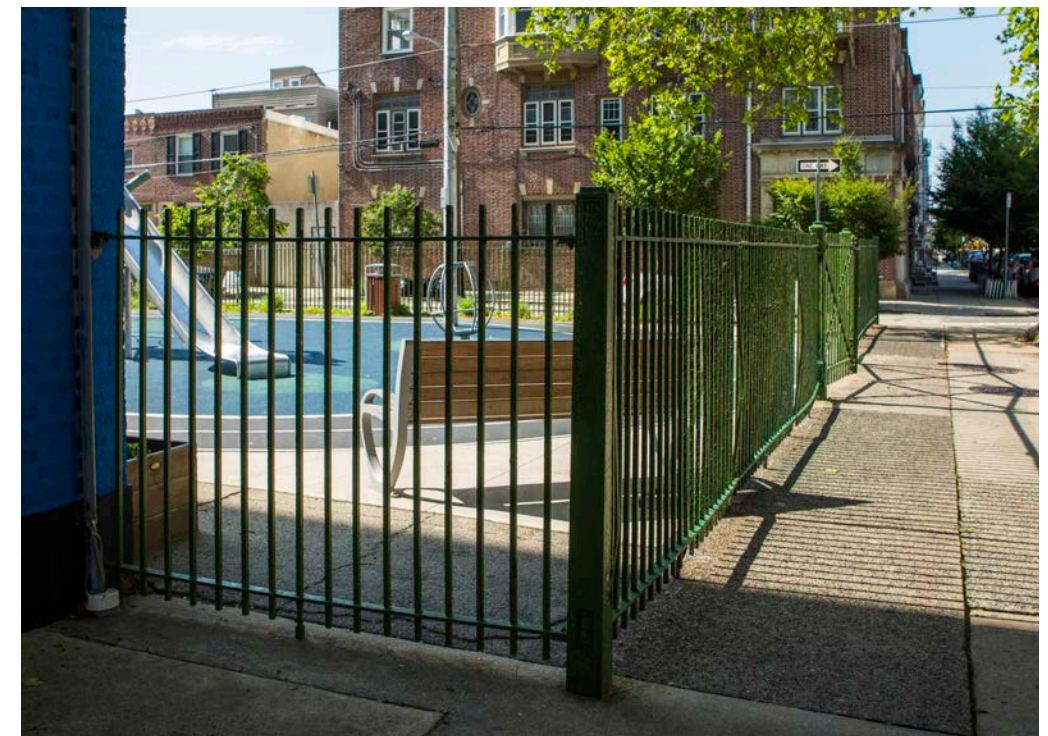
**James Logan School**



**TRUST FOR  
PUBLIC  
LAND™**

**akrf**





**Edwin M. Stanton School**



**James Logan School**

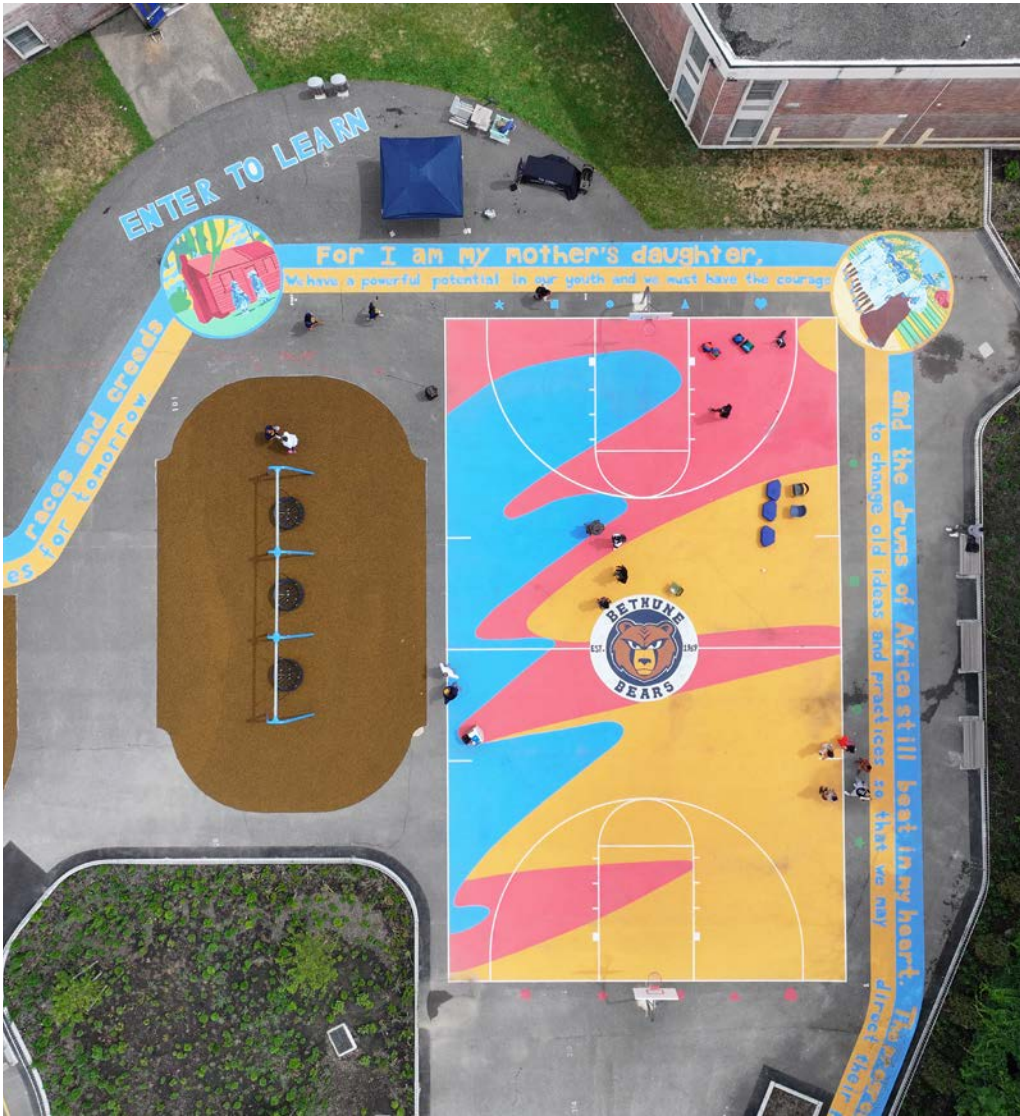


**TRUST FOR  
PUBLIC  
LAND™**

**akrf**



\*Received Art Commission Approval



Mary McLeod Bethune School



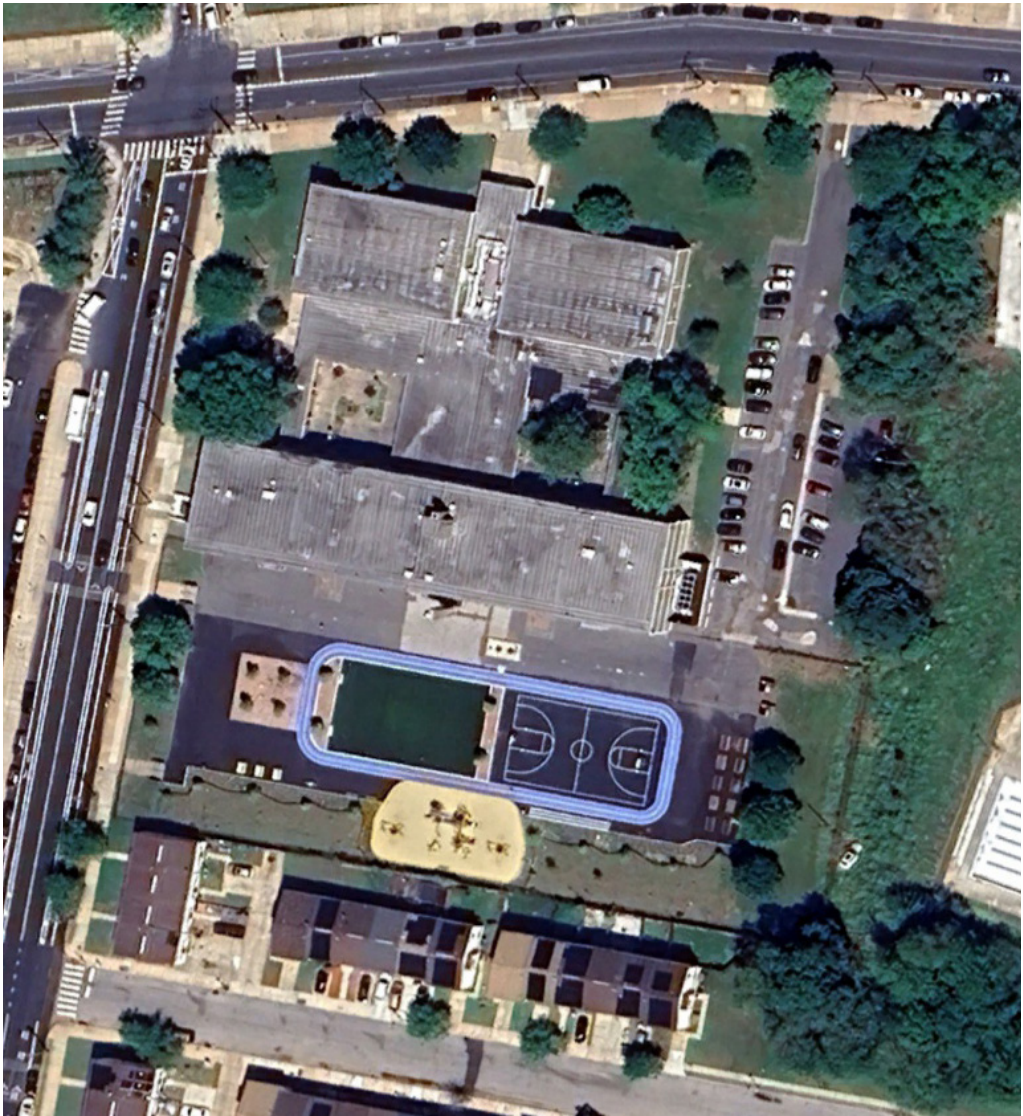
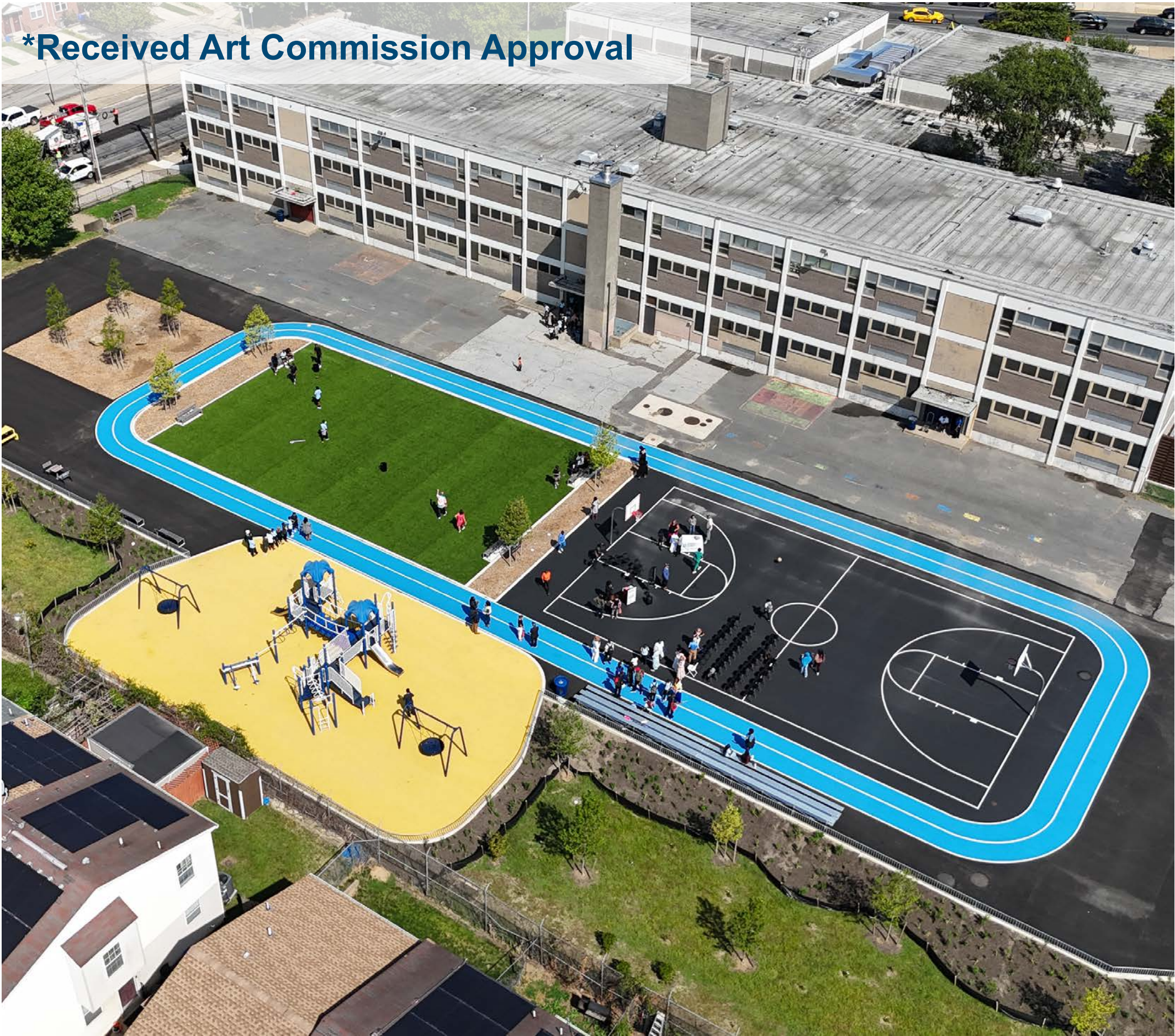
James Logan School



TRUST FOR  
PUBLIC  
LAND™

akrf





**Alain Locke School**



**James Logan School**



**TRUST FOR  
PUBLIC  
LAND™**

**akrf**





**John M. Patterson Elementary School**



**James Logan School**

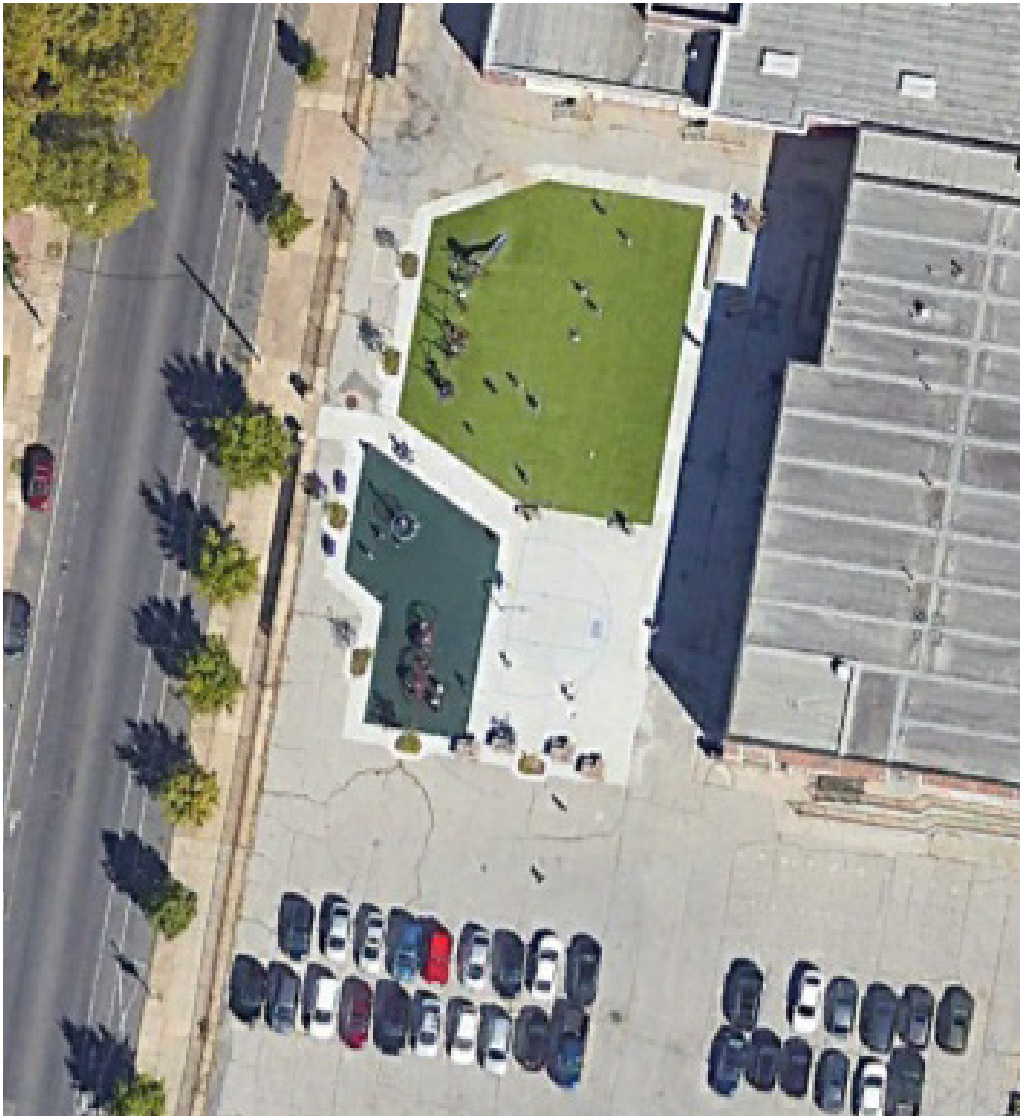


**TRUST FOR  
PUBLIC  
LAND™**

**akrf**



**\*Received Art Commission Approval**



**James R. Lowell Elementary School**



**James Logan School**



**TRUST FOR  
PUBLIC  
LAND™**

**akrf**





**Benjamin Franklin School**



**James Logan School**



**TRUST FOR  
PUBLIC  
LAND™**

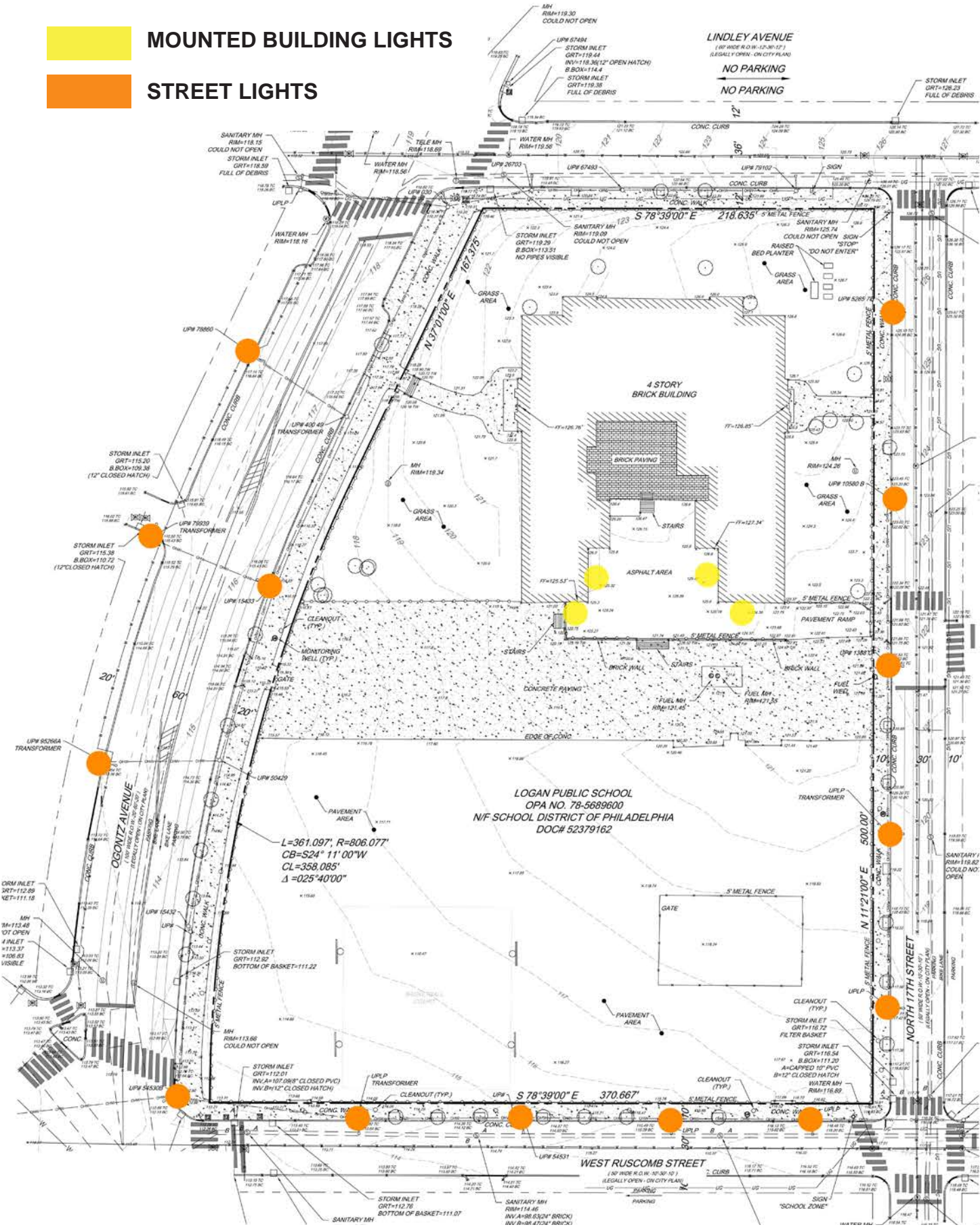
**akrf**





existing lighting

- MOUNTED BUILDING LIGHTS
- STREET LIGHTS



James Logan School



TRUST FOR PUBLIC LAND

akrf



questions?



James Logan School



TRUST<sup>FOR</sup>  
PUBLIC  
LAND<sup>™</sup>

akrf