

Memorandum



To: Alex Smith, Director Art Commission
From: Rana Eldidi
Date: June, 23rd 2025
Re: Request for Art Commission Review

We respectfully request a spot on the July Art Commission agenda for review regarding capital improvements at Granahan Recreation Center. This is a PPR site is located at 6500 Callowhill St. Philadelphia, PA 19151.

We have received conceptual approval and are looking to return for final approval.

The following brief describes the extent of work.

Granahan Recreation Center is currently in the process of designing the expansion, and reconstruction of this important community space, and we believe the work aligns with the city's commitment to enhancing public spaces with artistic and functional designs that benefit all Philadelphia residents. Since 2021, PPR has conducted an extensive community engagement process to ensure that the design reflects the voices of the people who use the center and its surrounding neighborhood. Feedback from residents, participants, and local organizations has been integral to design decisions. The project aims to incorporate their needs, aspirations, and cultural values into the design, from creating accessible and flexible spaces to integrating sustainable and aesthetically thoughtful design elements that foster a sense of ownership and pride in the community.

The Granahan Recreation Center has been a cornerstone of the community for many years, and our project aims to reinvigorate and expand this space to better serve the needs of its users. The scope of the project includes not only the demolition of the outdated structure but also a complete redesign and expansion that incorporates new spaces for recreation, education, and community engagement. This expansion is designed to support a variety of programming, including three vital community organizations: two local football teams and an art therapy class. These organizations rely heavily on the center as a space for practice, connection, and healing.

Following art commission approval, PPR will finalize the design and coordinate the construction of a new recreation center. The project budget is \$3,000,000 including surveying and design services. SITIO is the design consultant and will be presenting on behalf of PPR.

Thank you for your attention; upon your acceptance, our team will submit the presentation materials at least one week prior to the July 9th meeting.

cc: Aparna Palantino, Capital Projects Director, CPO
Francesco Cerrai, Project Director
Rana Eldidi, Project Coordinator
Jacob Elisii, Project Coordinator



GRANAHAN RECREATION CENTER

PHILADELPHIA PARKS & RECREATION | **ARTS COMMISSION PRESENTATION** | 07.09.2025



The Philadelphia Art Commission
Established 1911

Robert Roesch
Chair

José Almiñana

Carmen Febo San Miguel

Matthew Kenyatta

James Lowe

Raed Nasser

Pepón Osorio

Rebecca Segall

Mario Zacharjasz

Alex M. Smith
Director

One Parkway Building
1515 Arch Street
13th Floor
Philadelphia, PA 19102

215-683-4636
artcommission@phila.gov

The Philadelphia Art Commission Decision Form

File #:	79-25	Commission Meeting Date:	04/09/2025
Name:	Rana Eldidi Philadelphia Parks and Recreation 1515 Arch Street Philadelphia, Pennsylvania 19102		
Project Name & Location:	Granahan Recreation Center 6500 Callowhill Street		
Proposal:	The proposal is for the demolition and reconstruction of the existing recreation center building, and related site upgrades, including a new plaza centrally located within the grounds. The new building will include an expansion for a new multi-purpose room facing the plaza. The building exterior will consist mostly of grey, white, and sea glass glazed brick, with clear glazing in select areas. The roof of the multi-purpose room will include an overhang angling away from the new plaza for stormwater management purposes.		
Commission Decision:	CONCEPT APPROVAL		
Remarks:	The Commissioners requested more information on site circulation (including ADA access), lighting (including nighttime renderings), bike parking, how shade will be provided for seating areas, and how concerns would be addressed related to safety, security, and maintenance, including graffiti deterrence, gate functionality, window durability, and potential blind spots around the building. The Percent for Art component this proposal triggers will be reviewed by the Art Commission as part of a separate future application.		

Alex M. Smith
Director of the Philadelphia Art Commission

Art Commission approval is not an endorsement for any approval, exception or variance that the proposal might require from any other department, board or commission.

- SITE:
 - ACCESSIBILITY & CIRCULATION
 - EXTERIOR LIGHTING SCOPE
 - BIKE PARKING SCOPE AND PROPOSED LOCATION
 - SEATING AREA LOCATION IN RELATION TO BUILDING
- SAFETY & SECURITY:
 - GATE FUNCTIONALITY
 - MATERIALS: WINDOW DURABILITY, BIRD-FRIENDLY, & GRAFFITI DETERRENCE
 - BUILDING VISIBILITY

GRANAHAN RECREATION CENTER

6500 CALLOWHILL STREET
PHILADELPHIA, PA 19151

SCOPE OF WORK

BUILDING:

- DEMOLITION OF EXISTING BUILDING
- NEW BUILDING - PROGRAM INCLUDES THE FOLLOWING
 - MULTIPURPOSE ROOM
 - MEDIA ROOM
 - OFFICE
 - KITCHEN
 - ADA COMPLIANT BATHROOMS

SITE IMPROVEMENTS:

- NEW PLAZA
- NEW CONCRETE SEAT WALLS
- NEW ENTRANCE GATE

FUNDING SOURCES

COUNCIL DISTRICT 4
2023 LSA GRANT

CONSTRUCTION BUDGET:

\$3,000,000

April 1, 2025

Katherine Liss
The Philadelphia Art Commission
One Parkway, 1515 Arch Street, 13th Floor
Philadelphia, PA 19102



Re: Letter of Intent for Percent for Art at Granaham Recreation Center

Dear Katherine:

Creative Philadelphia would like to inform the Philadelphia Art Commission of our intent to administer Percent for Art funds at Granaham Recreation Center, located at 6500 Callowhill Street. Granaham Recreation Center will be undergoing a renovation and expansion, which has triggered the Percent for Art requirement. The capital project consists of a newly constructed recreation building with multi-purpose room, media room, support spaces and exterior site upgrades. The timeline and scope for the administration of art funds is still being determined in collaboration with Capital Program Office (CPO) and Philadelphia Parks and Recreation (PPR)

The Percent for Art funds will provide a beautiful and enduring work of public art that is permanent, site-specific, and reflects the culture, values and diversity of the community. The Art budget will be at least 1% of the total project budget in keeping with the City's Percent for Art guidelines. A project specific Percent for Art Committee will be formed to advise the selection of the artist and the artwork, and will include community voices, and representatives from the Capital Program Office, Parks and Recreation, elected officials, design team, artists, and Creative Philadelphia. The winning artist will be selected through an open Call for Artists process which will involve opportunities for feedback and input from members of the public.

Creative Philadelphia will provide oversight for the Percent for Art process from concept to installation and will work with the Artist and project team to ensure the technical details for the artwork are coordinated with the site. Once the winning artist is selected and the artwork has been developed, Creative Philadelphia will initiate a separate review process with the Philadelphia Art Commission for approving the artwork.

We look forward to working with Capital Programs Office, PPR and all stakeholders to realize beautiful, site-specific public artwork that will be a long-lasting contribution to Granaham Rec and the surrounding community, while enhancing the City's renowned collection of public art. Should you require any additional information please do not hesitate to call me at 215.686.4596.

Sincerely,

Marguerite Anglin, RA, NOMA
Public Art Director
Creative Philadelphia
City of Philadelphia

116 City Hall • Philadelphia, PA 19107 • www.creativephl.org • 215.686.4596

EXISTING BUILDING



EXISTING BUILDING



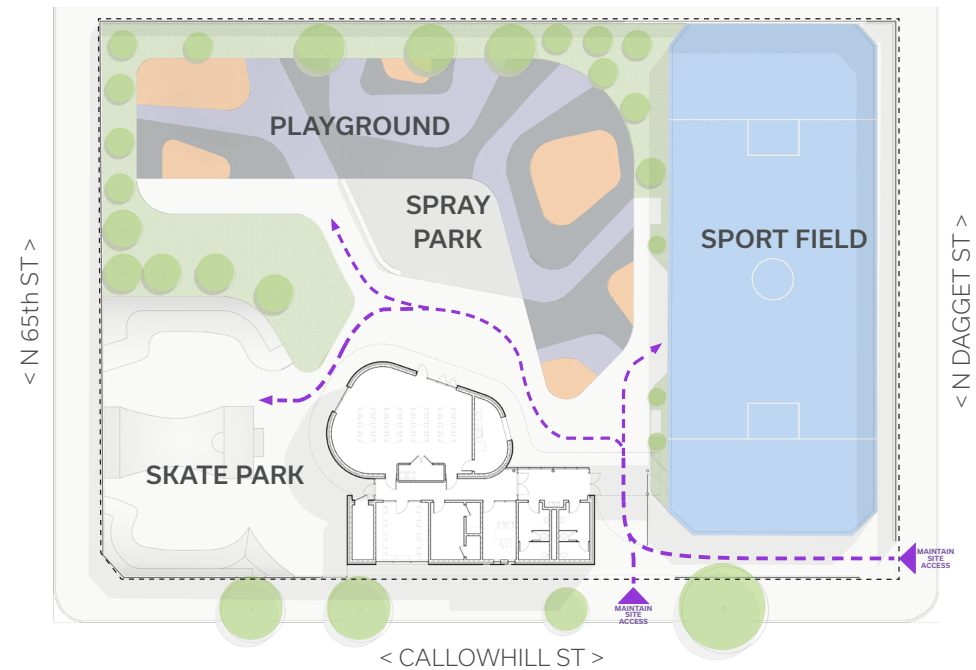
EXISTING BUILDING

COMMUNITY ENGAGEMENT

ENGAGEMENT MEETING #1 - #3: SUMMER 2021
 ENGAGEMENT MEETING #4: AUGUST 2024
 ENGAGEMENT MEETING #5: OCTOBER 2024



2024 GRANAHAH UPDATE



SITE PLAN

AXON & PERSPECTIVES



SITE AXON



FLOOR PLAN

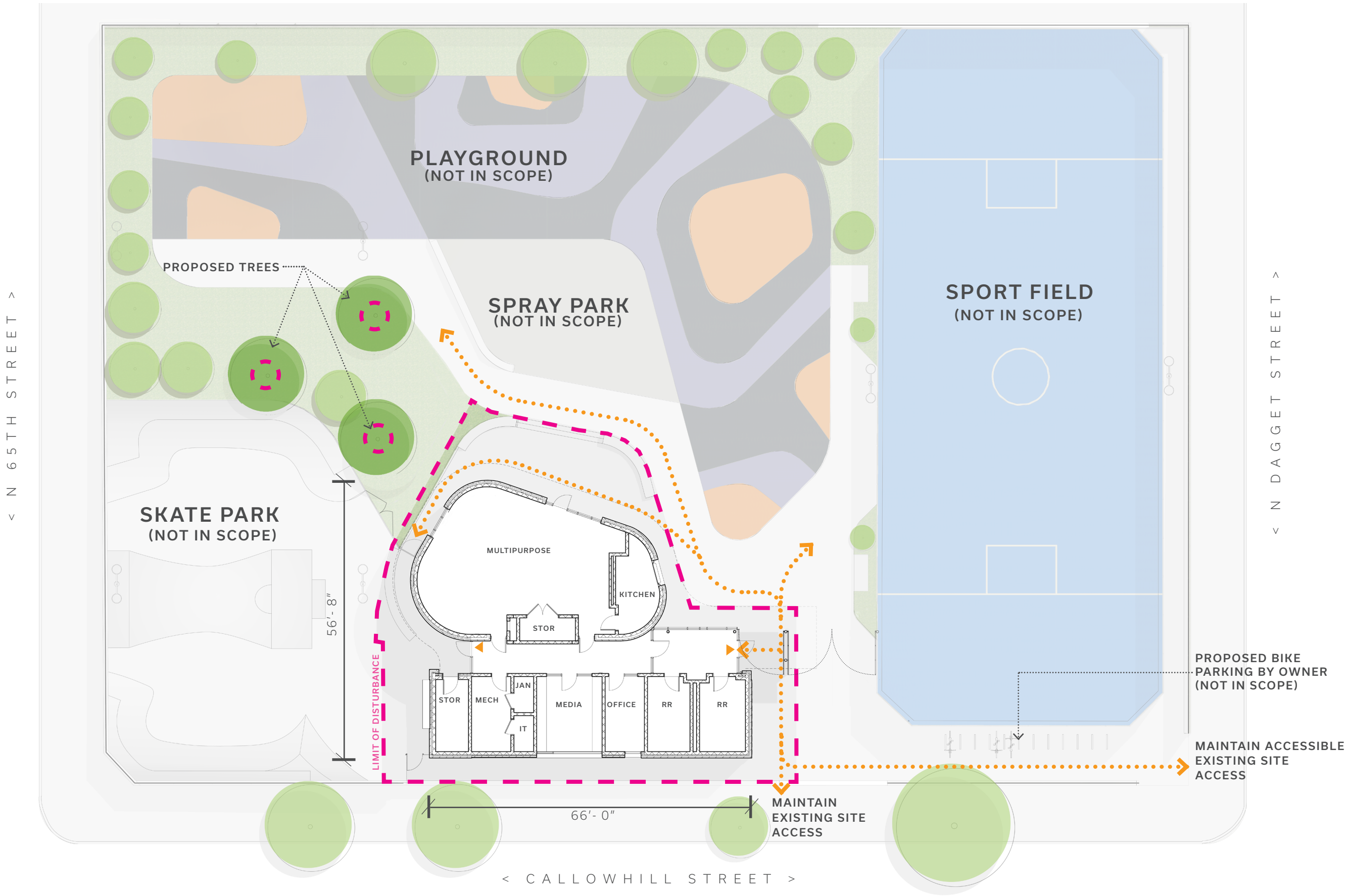
MULTI-PURPOSE ROOM USES



PLAYGROUND

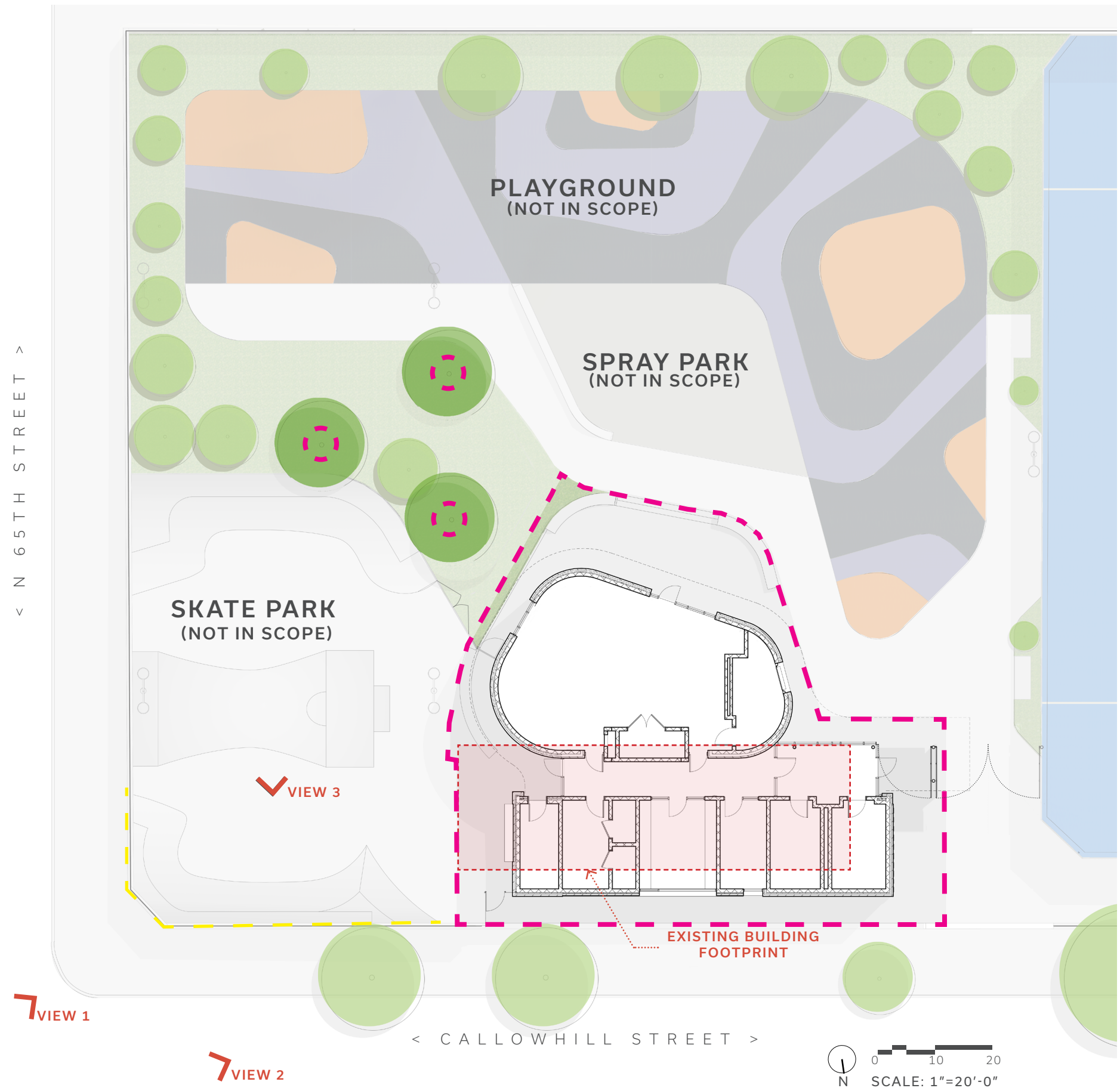
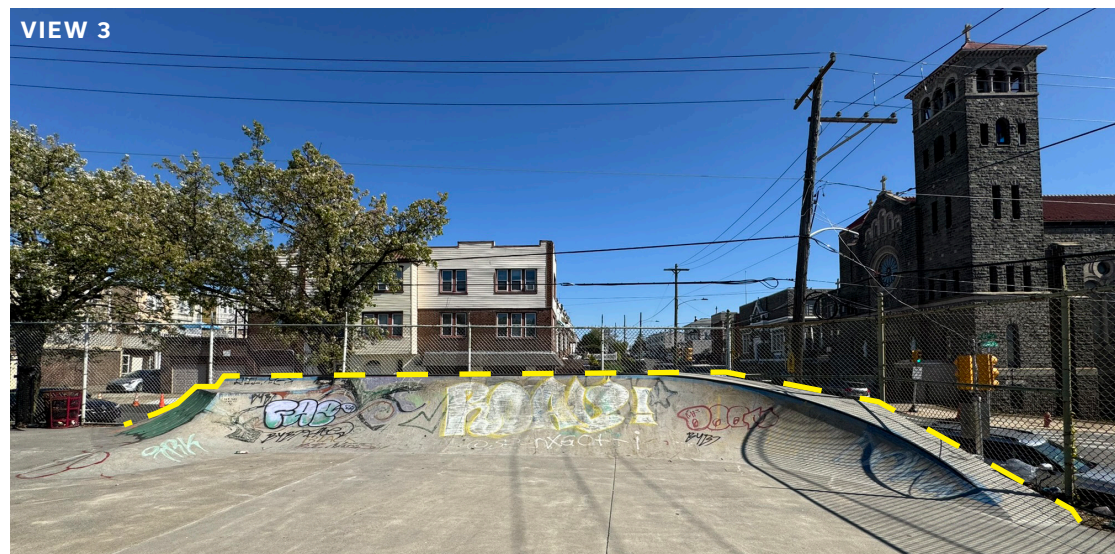


ENTRANCE

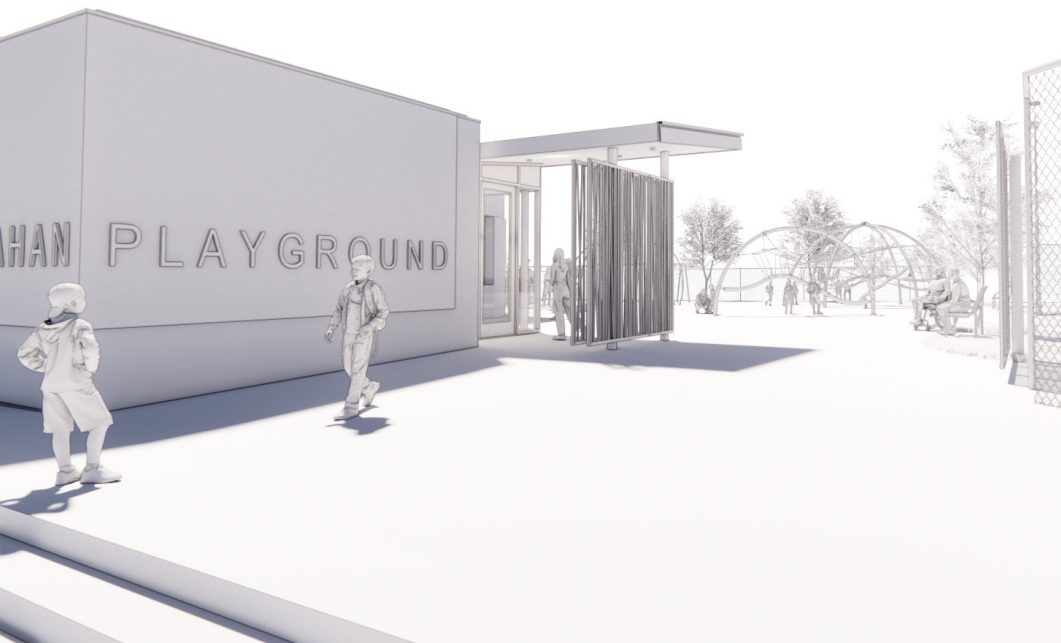
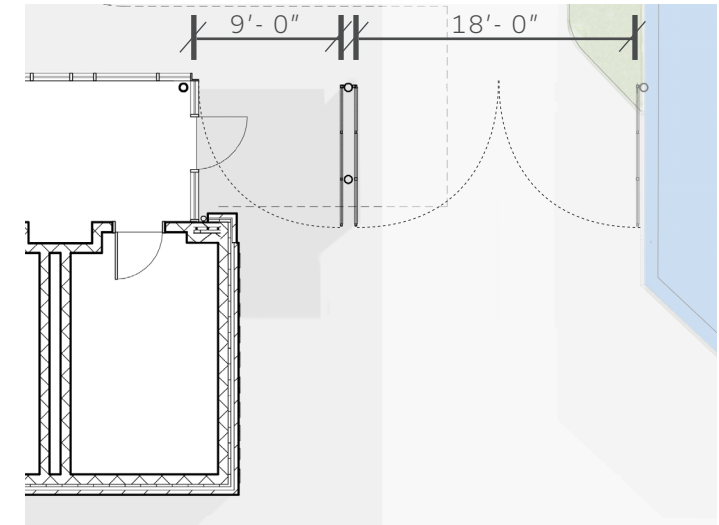




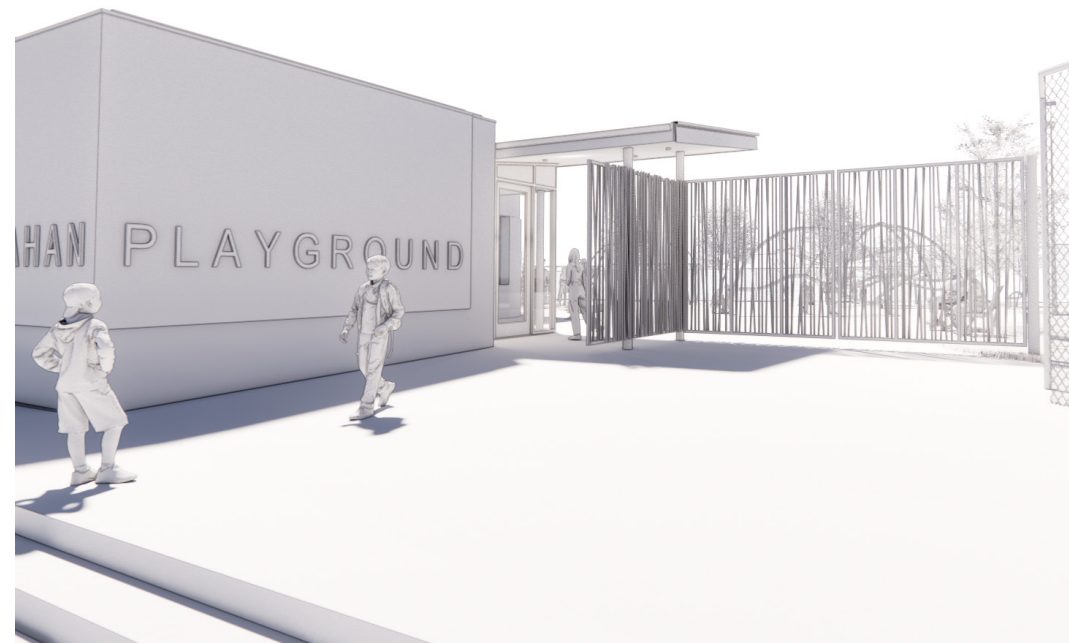
EXISTING SITE LIGHTS TO REMAIN



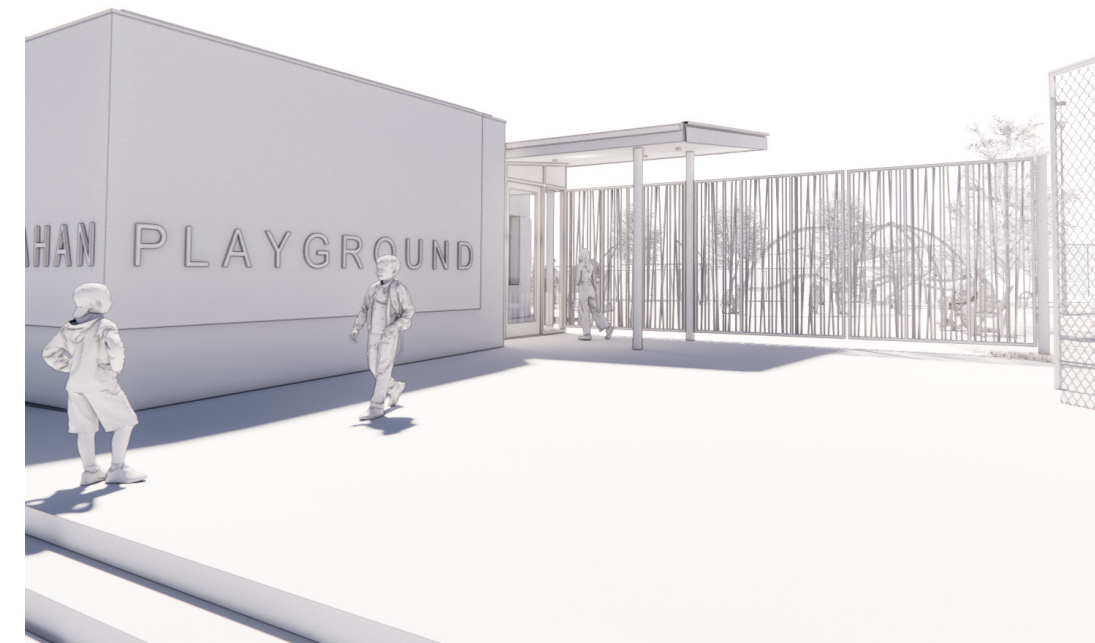
GATE FUNCTIONALITY



OPEN



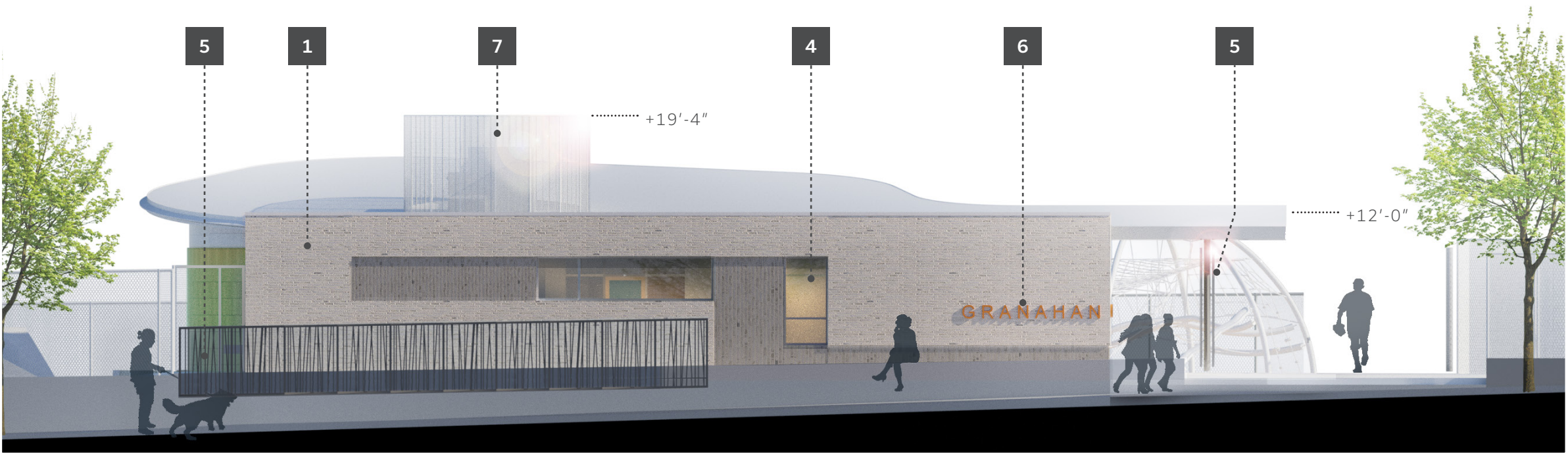
PARTIALLY OPEN



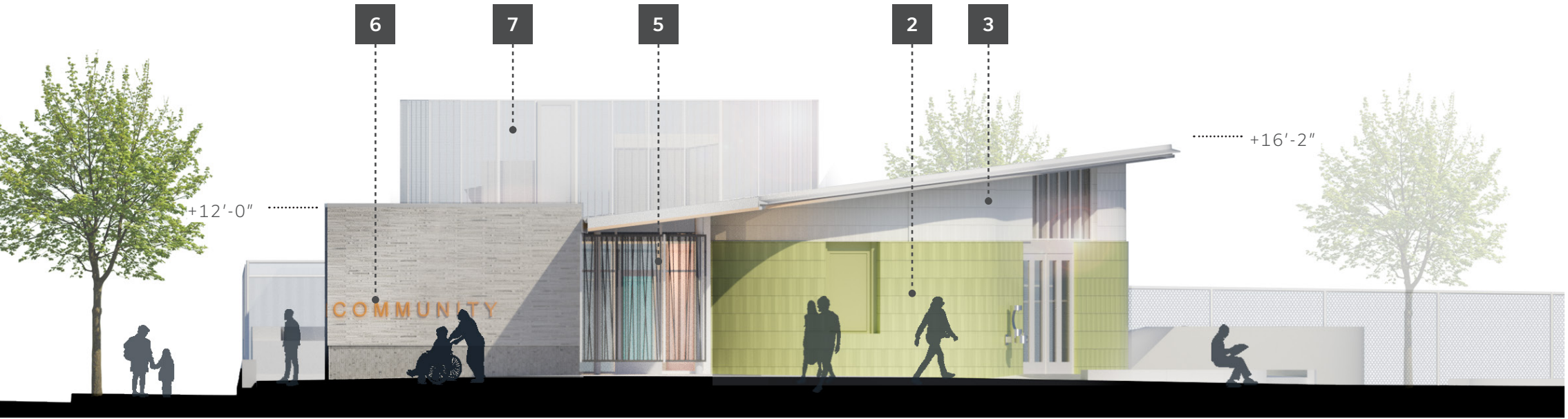
CLOSED

ELEVATIONS

- 1 BRICK A
- 2 BRICK B
- 3 BRICK C
- 4 GLAZING
- 5 GATE/GUARDRAIL
- 6 SIGNAGE
- 7 RTU SCREEN
- 8 SOFFIT



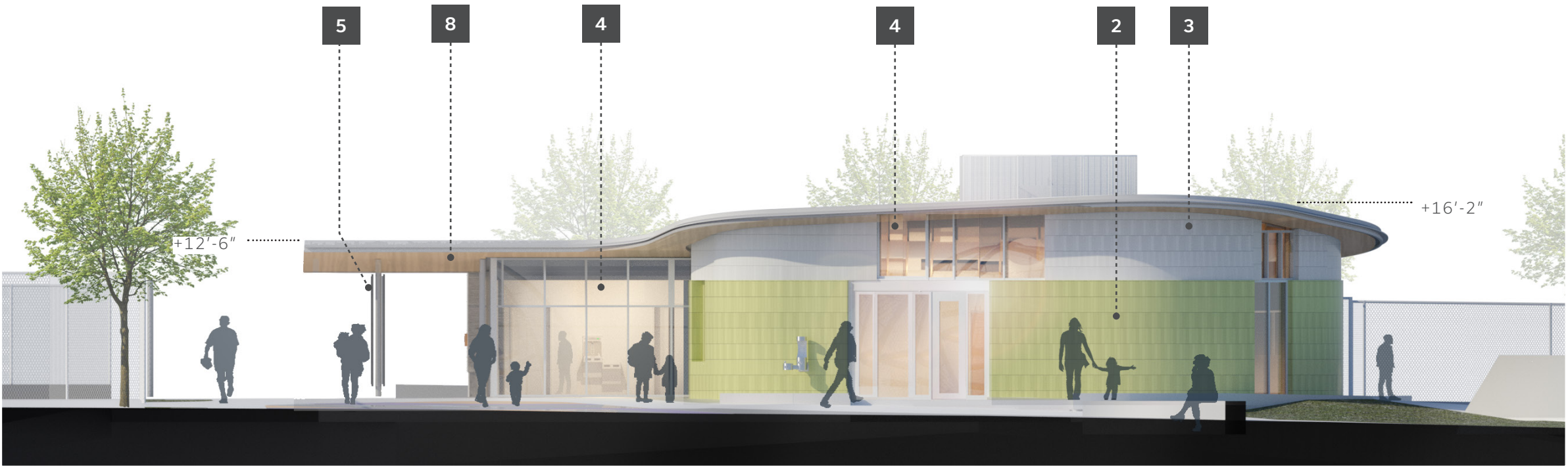
NORTH ELEVATION



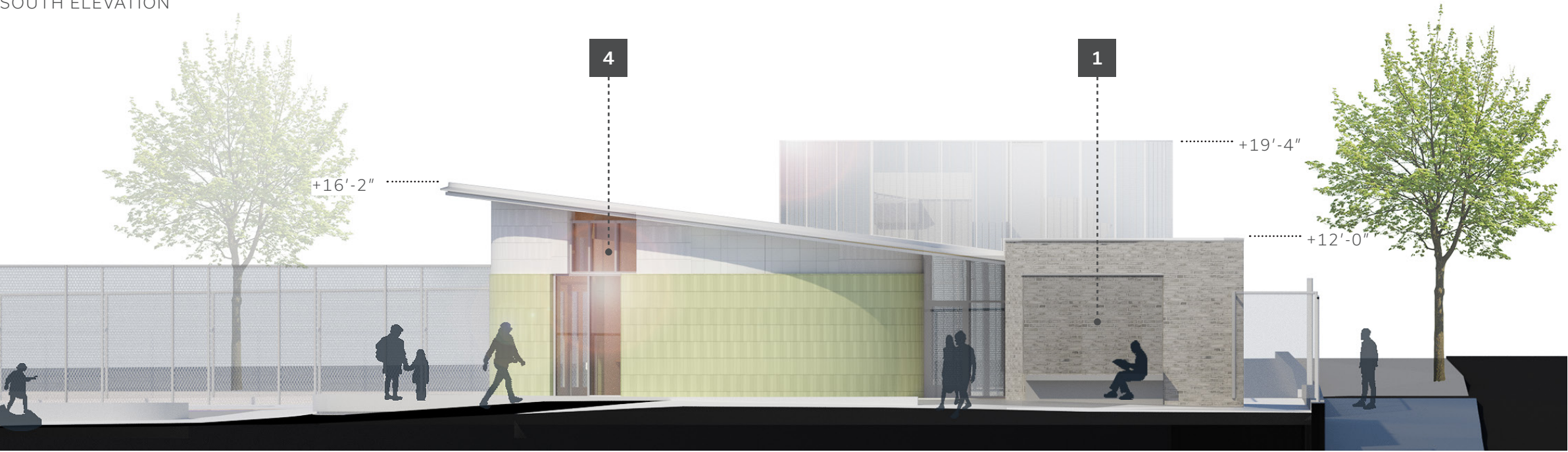
WEST ELEVATION

ELEVATIONS

- 1 BRICK A
- 2 BRICK B
- 3 BRICK C
- 4 BIRD-FRIENDLY SECURITY GLAZING
- 5 GATE/GUARDRAIL
- 6 SIGNAGE
- 7 RTU SCREEN
- 8 SOFFIT



SOUTH ELEVATION



EAST ELEVATION

MATERIALS

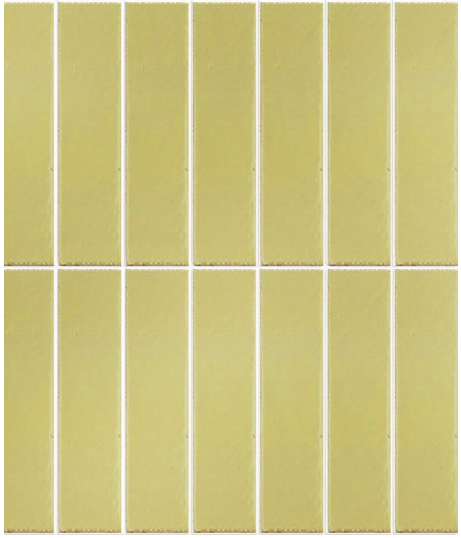
- 1 BRICK A
- 2 BRICK B
- 3 BRICK C
- 4 GLAZING
- 5 GATE/GUARDRAIL
- 6 SIGNAGE
- 7 RTU SCREEN
- 8 SOFFIT



1 / BRICK - A
BRICK WITH ANTI-GRAFFITI COATING



2 / BRICK - B
GLEN GERY WHITE BRICK



3 / BRICK - C
BELDEN SEA GLASS GLAZED BRICK



OVERALL MULLION COLOR
CHARCOAL



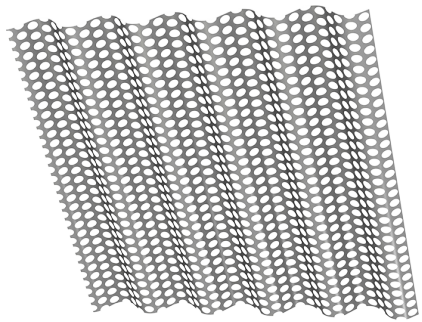
4 / GLAZING
BIRD-FRIENDLY SECURITY GLASS



5 / GATE/GUARDRAIL
PAINTED STEEL TUBE



6 / SIGNAGE
STAINLESS STEEL DIRECT MOUNTED LETTERS



7 / RTU SCREEN
PERFORATED CORRUGATED ALUMINUM



8 / SOFFIT
WOOD TONE METAL PANEL



NORTH ELEVATION



SOUTH VIEW PERSPECTIVE



