

Memorandum



To: Alex Smith, Director Art Commission
From: Jane Anderson, Project Coordinator, Capital Program Office
Date: July 2, 2025
Re: Request for Art Commission Administrative Approval

We respectfully request administrative approval for improvements at Charles Baker and Carol Baker Rice Recreation Center Playground. This PPR site is located at 5433 Lansdowne Avenue, Philadelphia, PA 19131.

The following brief describes the extent of work:

The Charles Baker and Carol Rice Baker Recreation Center is currently in design for proposed in-kind playground replacement. The current proposal will replace existing tot and junior playground equipment and safety surface within an equivalent footprint. The color palette of the equipment was selected to reflect the exterior mural of the renovated Rec Center, a rendered view of this mural can be seen in the slides.

The playground scope was added to the site renovation project once it was determined that the playground equipment was past its useful life and safety surface was deemed unsafe and unlikely to pass current ASTM Safety Standards.

Other site renovations will include replacing concrete paving and site furniture that were Add Alternates to the previously approved Baker Recreation Center renovation. Slides from the final Art Commission submission of October 2022 shows base bid work of the Rec Center renovation currently under construction, as well as Add Alternates 1-4. This proposed project includes concrete and site furniture from Add Alternate 1 and 3. Add Alternates 2 and 4 are currently unfunded but will be part of Phase 3 of the project. The flagpole will be relocated just outside the pool fence.

Please see the next pages for existing site photos, site aerial, proposed playground layout, and proposed playground renderings for your understanding of the site and scope.

No trees will be removed as part of this project and two additional trees are planned for the junior playground area.

The Project budget is \$455,386, provided by Council District 4 and Philadelphia Parks and Recreation.

cc: Pedro Pinto, Deputy Director, Capital Program Office
Leigh Ann Campbell, Deputy Commissioner, PPR
Francesco Cerrai, Project Director
Jane Anderson, Project Coordinator
File: Project #16-24-7178-01

BAKER PLAYGROUND

5433 LANSDOWNE AVE

PHILADELPHIA ART COMMISSION

JULY 9, 2025



CAPITAL PROGRAM OFFICE
CITY OF PHILADELPHIA



**PHILADELPHIA
PARKS &
RECREATION**

EXISTING CONDITIONS



BAKER PLAYGROUND 5433 LANSDOWNE AVE
JULY 2025



CAPITAL PROGRAM OFFICE
CITY OF PHILADELPHIA



**PHILADELPHIA
PARKS &
RECREATION**

SITE AERIAL AND PROJECT LIMITS



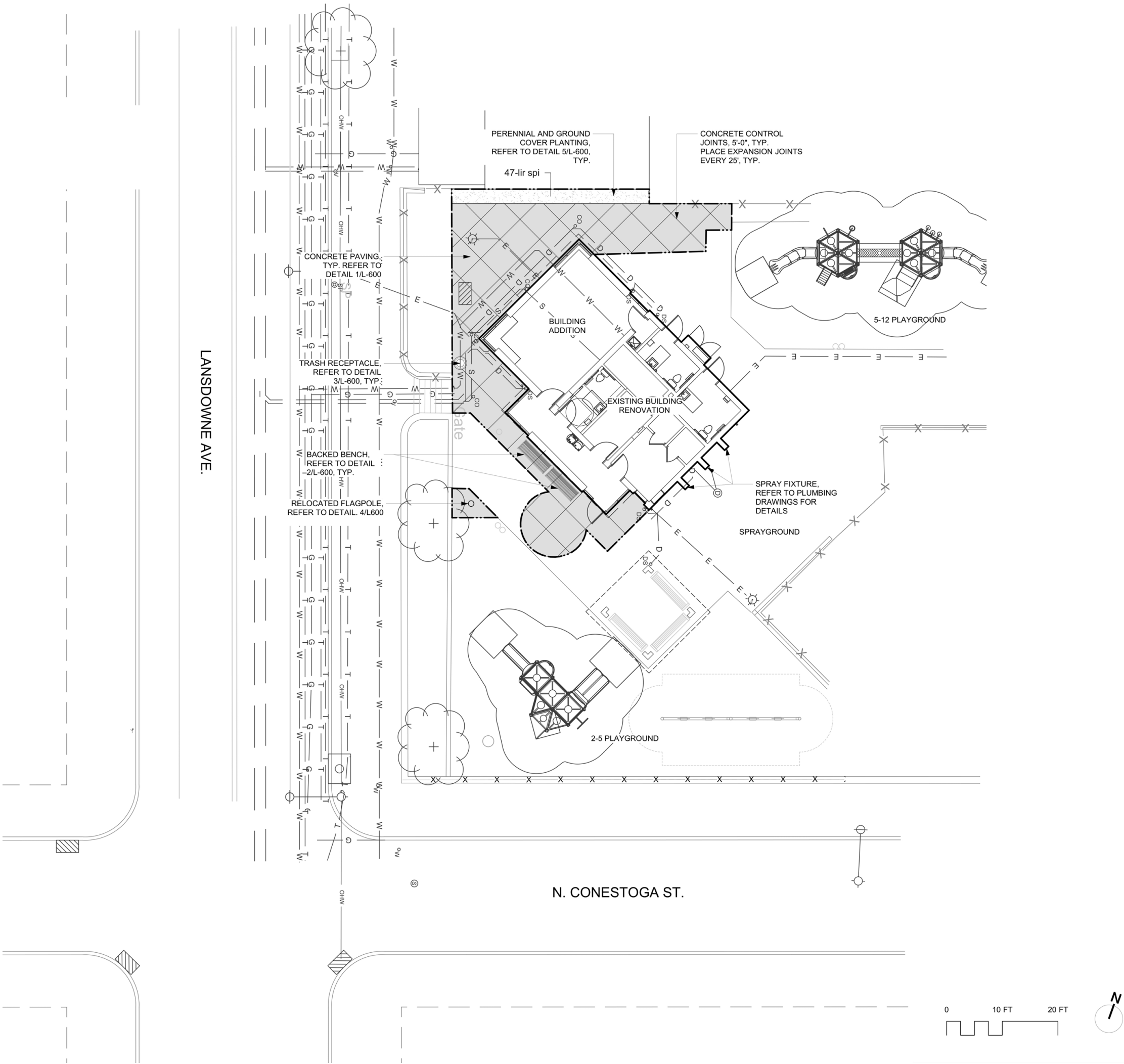
BAKER PLAYGROUND 5433 LANSDOWNE AVE
JULY 2025



CAPITAL PROGRAM OFFICE
CITY OF PHILADELPHIA



**PHILADELPHIA
PARKS &
RECREATION**



SITE PLAN - BASE BID

BAKER PLAYGROUND

OCTOBER 12, 2022

SITE PLANNING AND DESIGN
BY GROUND RECONSIDERED



BAKER PLAYGROUND 5433 LANDSDOWNE AVE
JULY 2025

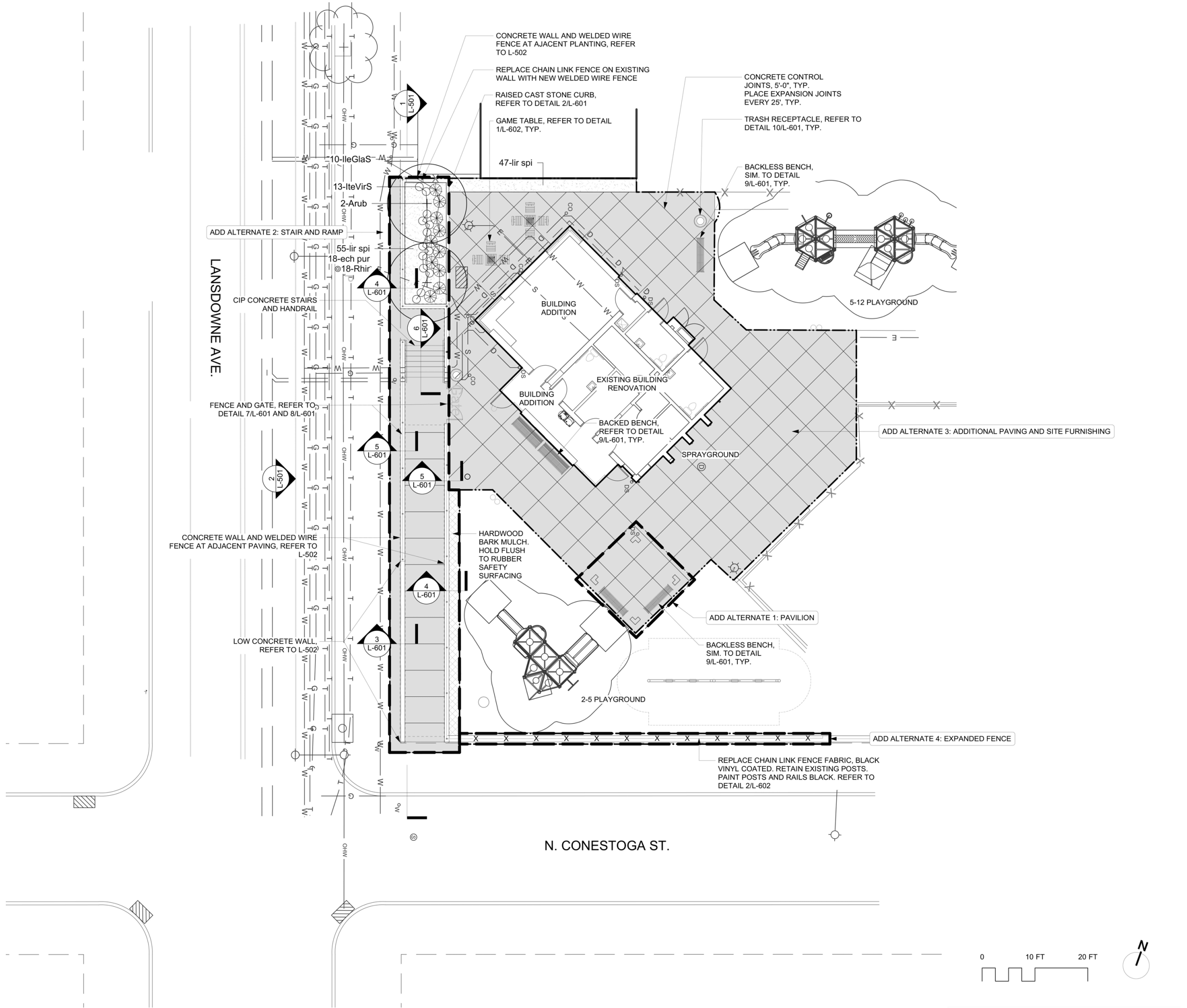


CAPITAL PROGRAM OFFICE
CITY OF PHILADELPHIA



PHILADELPHIA
PARKS &
RECREATION

PHASE I SUBMISSION



SITE PLAN - ADD ALTERNATE

BAKER PLAYGROUND

OCTOBER 12, 2022

SITE PLANNING AND DESIGN
BY GROUND RECONSIDERED



BAKER PLAYGROUND 5433 LANSDOWNE AVE

JULY 2025

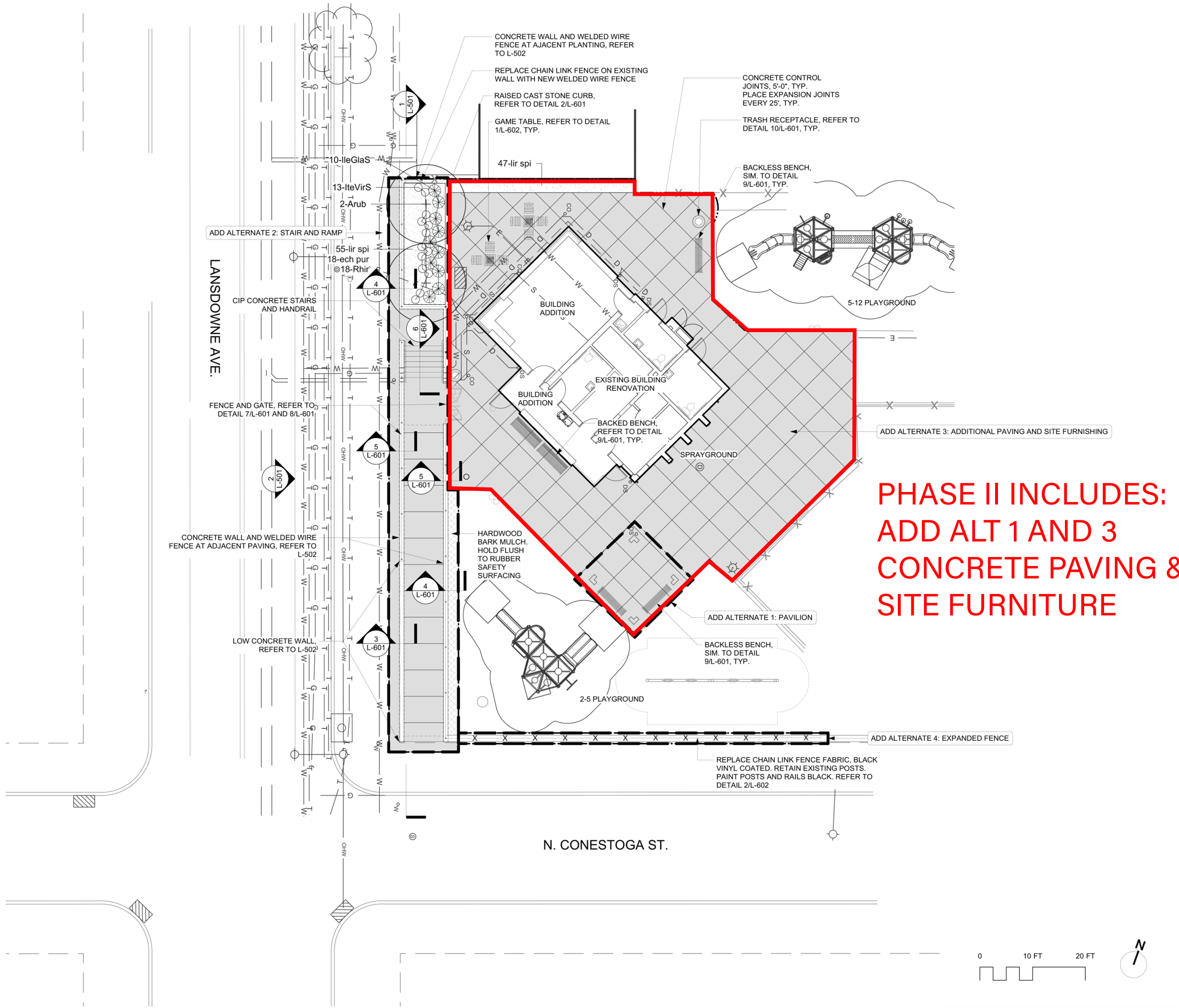


CAPITAL PROGRAM OFFICE
CITY OF PHILADELPHIA



PHILADELPHIA
PARKS &
RECREATION

PHASE II: ADD ALTERNATES



PHASE II INCLUDES:
ADD ALT 1 AND 3
CONCRETE PAVING &
SITE FURNITURE

SITE PLAN - ADD ALTERNATE

BAKER PLAYGROUND

OCTOBER 12, 2022

SITE PLANNING AND DESIGN
BY GROUND RECONSIDERED



BAKER PLAYGROUND 5433 LANSDOWNE AVE

JULY 2025



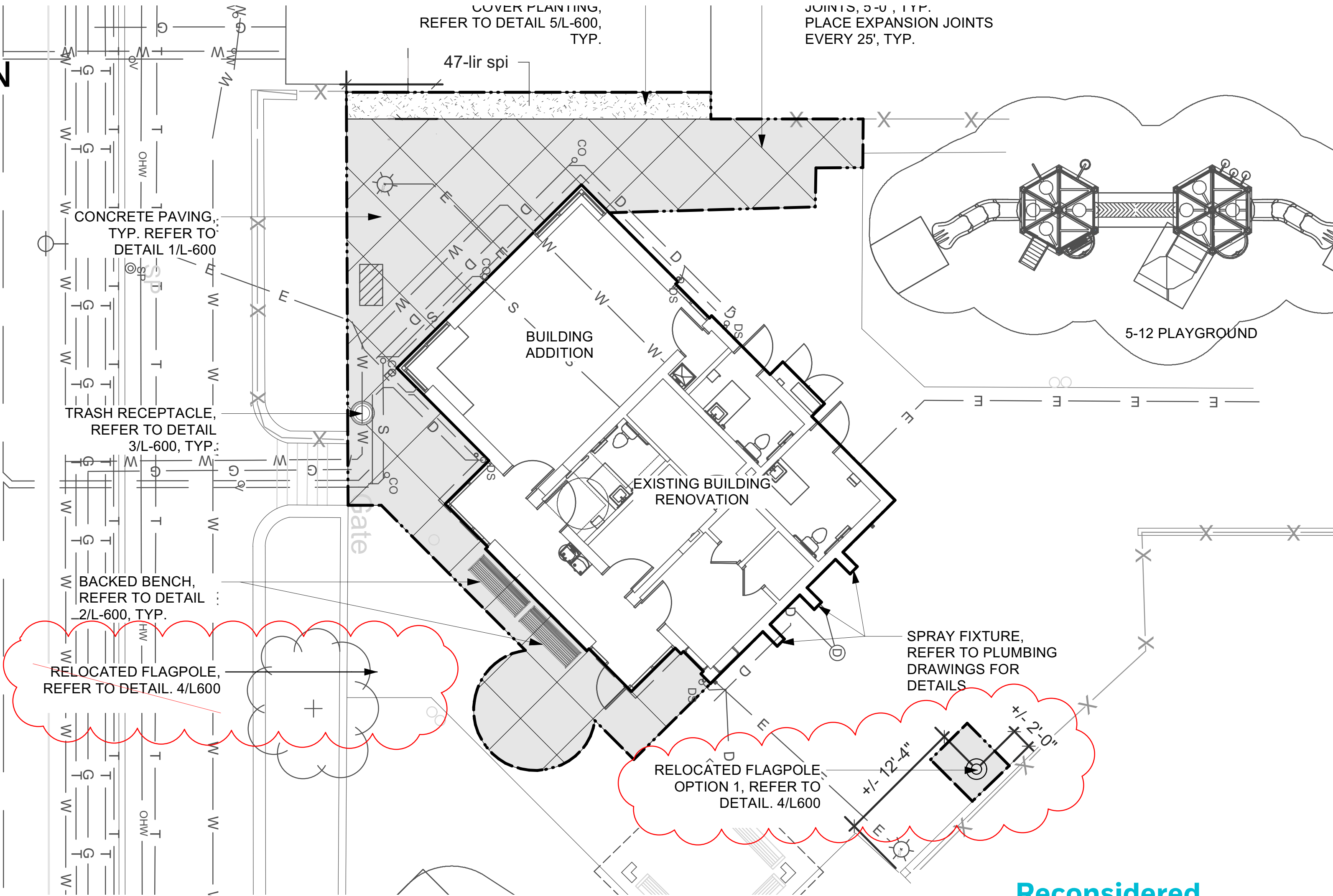
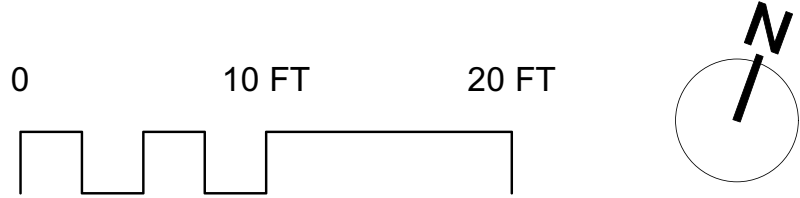
CAPITAL PROGRAM OFFICE
CITY OF PHILADELPHIA



PHILADELPHIA
PARKS &
RECREATION

PHASE II:
FLAGPOLE RELOCATION

LANSDOWNE AVE.



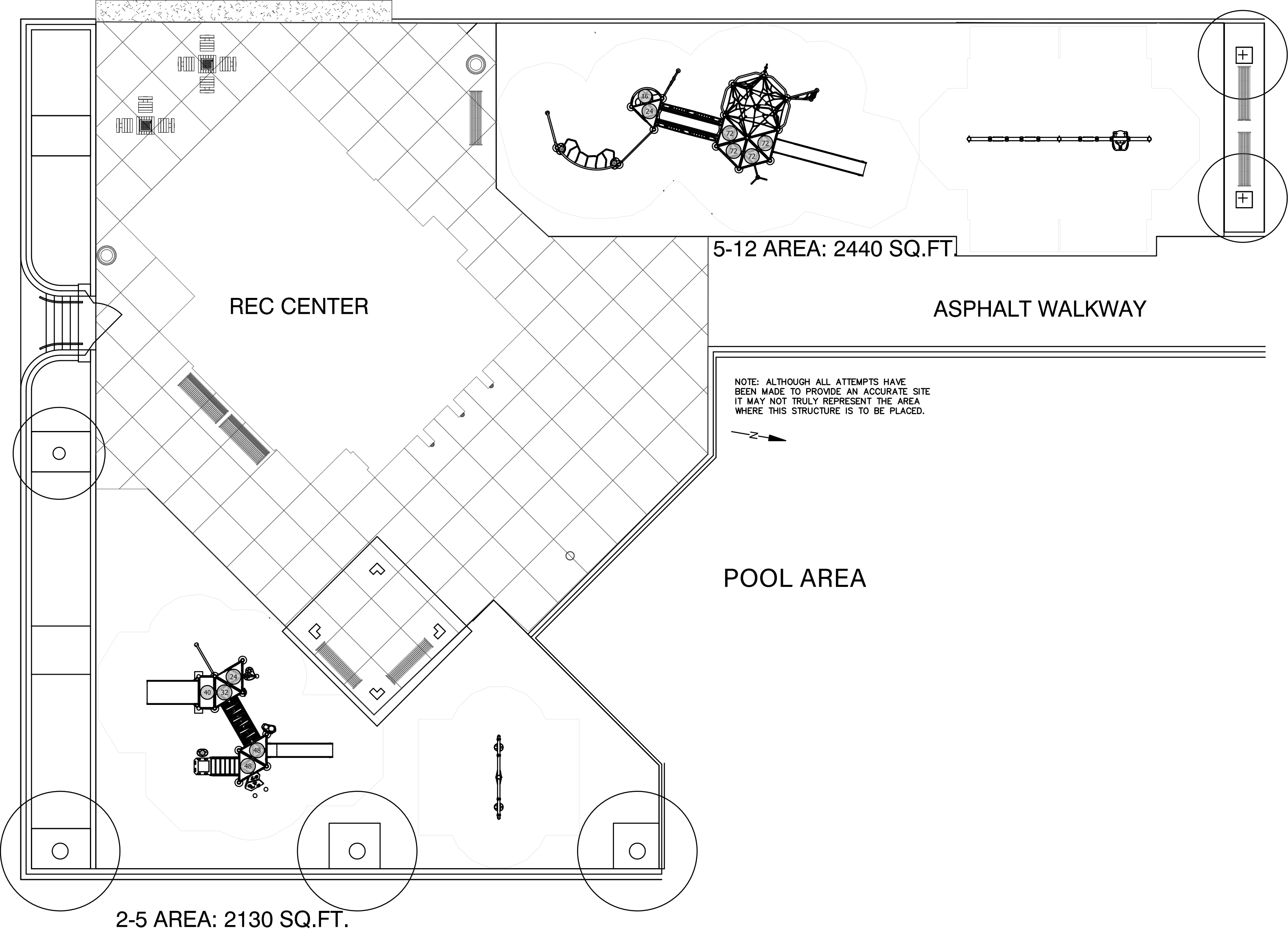
NOTES:
1. KEEP EX. PAVING IN PLACE WHERE FLAGPOLE WAS PREVIOUSLY SHOWN.

Ground Reconsidered
230 South Broad Street, Suite 604 | Philadelphia, PA 19102
p: 215-790-0727 | f: 215-790-0949 | www.groundreconsidered.com

Project Title Baker Playground	Issue No. 1	Issue Date 12.11.2022
	Scale As Shown	Project No. 2013.01
	Reference Info.	
Sheet Title Flagpole Location Options	Sketch No. CLSK02	



PHASE II: PLAYGROUND LAYOUT



BAKER PLAYGROUND 5433 LANSDOWNE AVE
JULY 2025



CAPITAL PROGRAM OFFICE
CITY OF PHILADELPHIA



**PHILADELPHIA
PARKS &
RECREATION**

PLAYGROUND RENDERING



BAKER PLAYGROUND 5433 LANSDOWNE AVE
JULY 2025



CAPITAL PROGRAM OFFICE
CITY OF PHILADELPHIA



**PHILADELPHIA
PARKS &
RECREATION**

PLAYGROUND RENDERING



BAKER PLAYGROUND 5433 LANSDOWNE AVE
JULY 2025



CAPITAL PROGRAM OFFICE
CITY OF PHILADELPHIA



**PHILADELPHIA
PARKS &
RECREATION**

PLAYGROUND RENDERING



BAKER PLAYGROUND 5433 LANSDOWNE AVE
JULY 2025



CAPITAL PROGRAM OFFICE
CITY OF PHILADELPHIA



**PHILADELPHIA
PARKS &
RECREATION**

PLAYGROUND COLOR PALLETTE



*EQUIPMENT IS REPRESENTATIVE



REC CENTER RENDERING - PLAYGROUND COLOR PALETTE INSPIRATION



BAKER PLAYGROUND 5433 LANSDOWNE AVE
JULY 2025



CAPITAL PROGRAM OFFICE
CITY OF PHILADELPHIA



**PHILADELPHIA
PARKS &
RECREATION**

REC CENTER COLOR PALLETTE

- ALUMINUM STOREFRONT
- ALUMINUM COMPOSITE FASCIA
- NEW BRICK VENEER
- REFRESHED MURAL ON EXISTING BUILDING
(COLOR SHOWN FOR REFERENCE)
- NEW ASPHALT SHINGLE ON EXISTING ROOF
- ALUMINUM WINDOWS IN EXISTING BUIL



SITE FURNITURE



BAKER PLAYGROUND 5433 LANSDOWNE AVE
JULY 2025



CAPITAL PROGRAM OFFICE
CITY OF PHILADELPHIA



**PHILADELPHIA
PARKS &
RECREATION**