



2024 Facts and Data about DV in Philadelphia

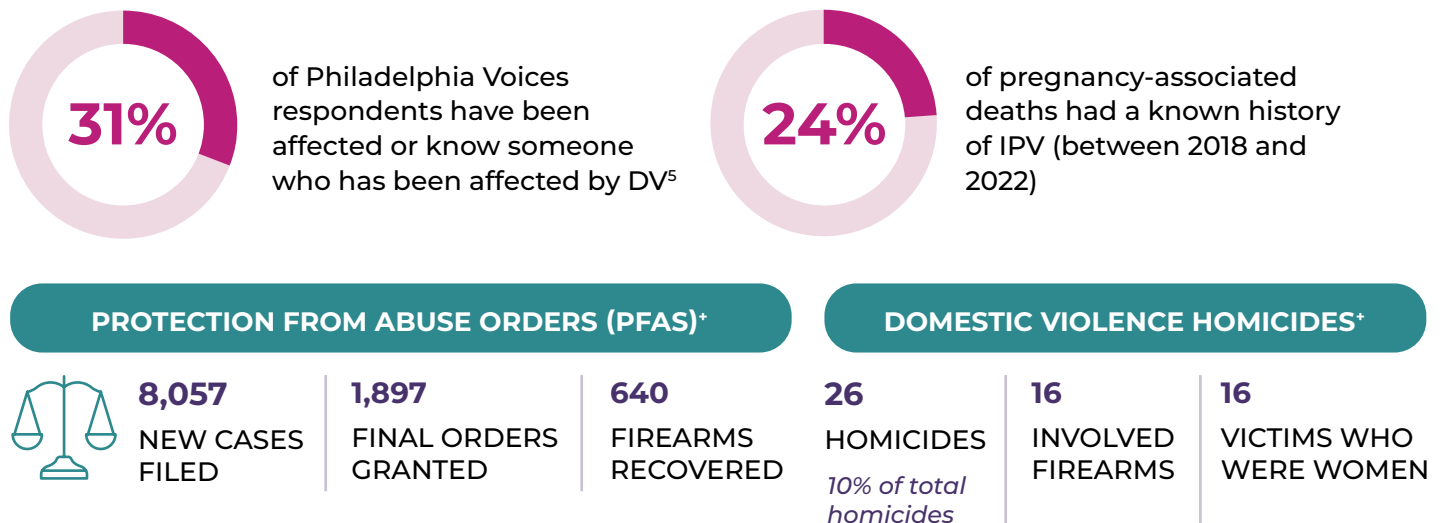
DOMESTIC VIOLENCE (DV) is a pattern of abusive behavior to gain or maintain power and control in a relationship that is used by one intimate partner or family member against another. DV and **INTIMATE PARTNER VIOLENCE (IPV)** are closely related but distinct terms. IPV is constrained to abusive behavior that occurs in a romantic relationship.

In the US:



IPV is common and considered a significant public health² and public safety issue. It is most common among women between the ages of 18 and 34³ and access to firearms increases the risk of DV homicide by at least 400%⁴.

In Philadelphia:



REFERENCES

¹ Domestic Violence Statistics. PCADV. (2024, September). <https://www.pcadv.org/about-abuse/domestic-violence-statistics/>

² About intimate partner violence. (2024, May). Intimate Partner Violence Prevention. <https://www.cdc.gov/intimate-partner-violence/about/index.html>

³ Catalano, S.M. (2012). Intimate Partner Violence, 1993-2010

⁴ Campbell, J. C., et al. (2003). Risk factors for femicide in abusive relationships: results from a multisite case control study. American Journal of Public Health, 93(7), 1089-1097.

⁵ Philadelphia Voices Survey, Fall 2024

2024 Facts and Data about DV in Philadelphia

PHILADELPHIA DOMESTIC VIOLENCE HOTLINE*



9,739

CALLS ANSWERED

8% of calls needed language service or were answered in a language other than English by bilingual staff

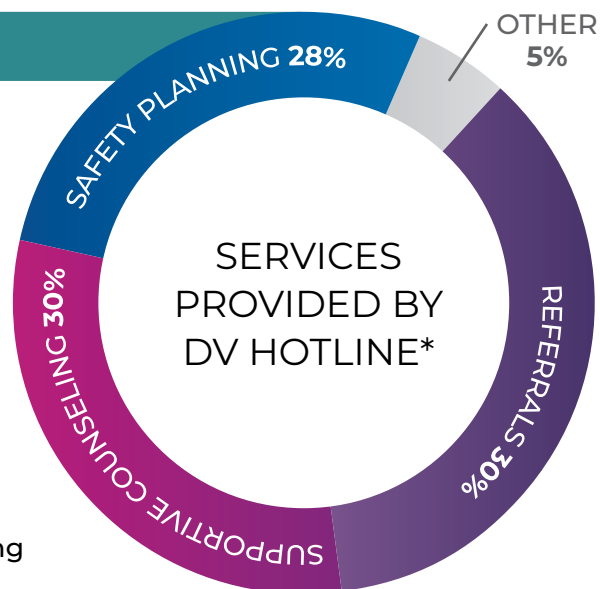
DOMESTIC VIOLENCE SHELTERS*



1,340

PEOPLE SHELTERED

54% of residents were **children** accompanying their parent



Better Access to City Services



SUPERVISED CHILD CUSTODY*

109

FAMILIES

166

CHILDREN

48%

OF CASES REFERRED BY FAMILY COURT HAVE A KNOWN HISTORY OF DV

EDUCATING PROVIDERS & CITY SERVICES*

35

TRAININGS

937

PARTICIPANTS

DV Screening*

OFFICE OF HOMELESS SERVICES

79%

OF CLIENTS SCREENED FOR DV

9%

REPORTED EXPERIENCED DV

PDPH - AMBULATORY HEALTH SERVICES

93%

OF CLIENTS SCREENED FOR DV

<1%

REPORTED EXPERIENCED DV

DEPARTMENT OF HUMAN SERVICES

60.5%

CASES WHERE DV WAS EXPLORED

13%

INVESTIGATIONS IN WHICH DV WAS DISCLOSED

If you or someone you know needs help:

PHILADELPHIA DOMESTIC VIOLENCE HOTLINE

1-866-723-3014

NATIONAL DOMESTIC VIOLENCE HOTLINE

800-799-7233

SUICIDE AND CRISIS LIFELINE

988



Office of
Domestic Violence Strategies
CITY OF PHILADELPHIA

