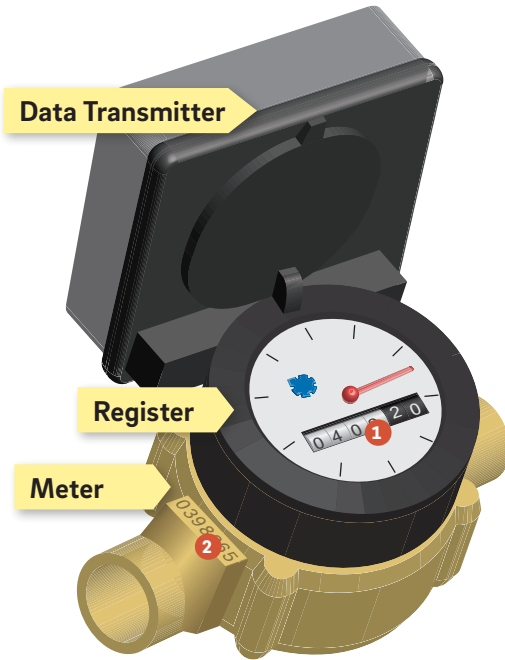


Parts of Your Water Meter



1 Usage Reading This 6 digit number (example: 0408.20.) measures the cubic feet of water your property has used. Be sure to record all six digits, including any leading zeros, if you need to share the number.

2 The Meter Number This seven-digit number (example: 0398865) identifies your meter. It is engraved into your meter and on a white sticker on the side of the device.

3 The red arm moves around the register's face once for every cubic foot (cf) used.

4 The small blue dial will turn any time water is flowing, even if you have a very small leak.



Checking for Leaks with a Meter

To check for a leak using your meter, turn off all water inside and outside your home. Write down all numbers displayed. Stop using any water for at least several hours — either overnight or while you are at work. Read your meter again, and compare the numbers to determine if water is leaking.

A licensed plumber can help you detect the source if it isn't apparent.