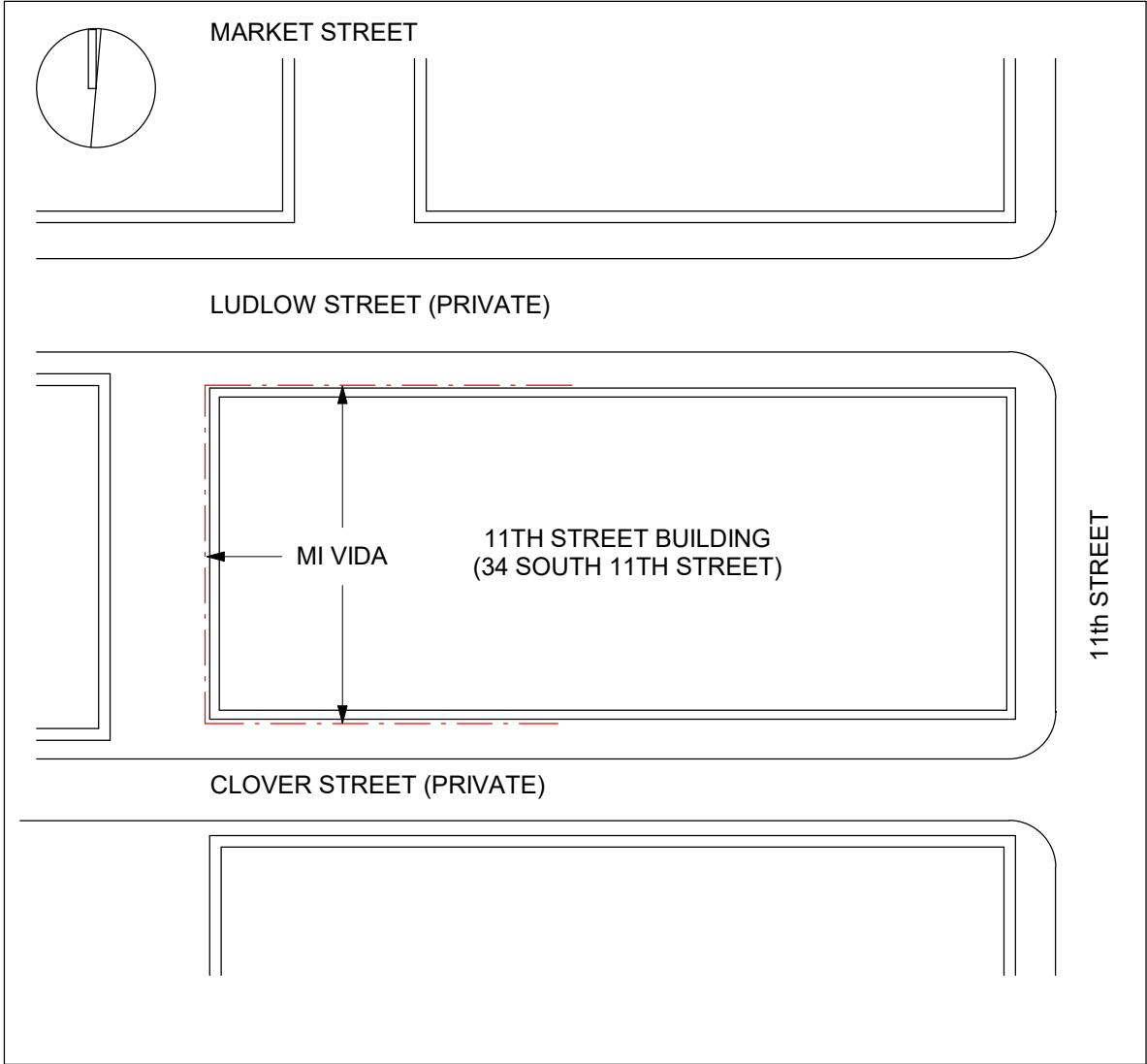
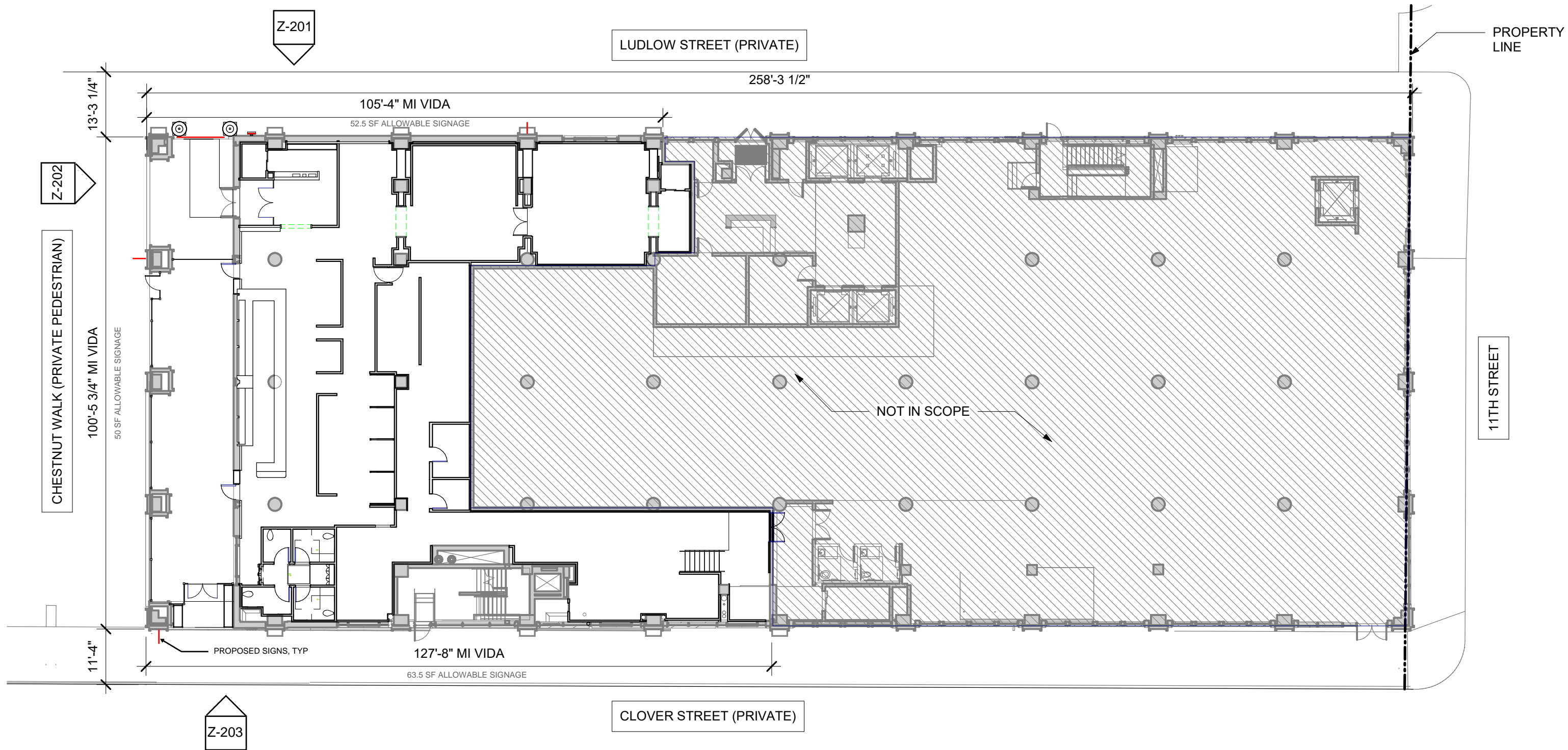


# MI VIDA EAST MARKET

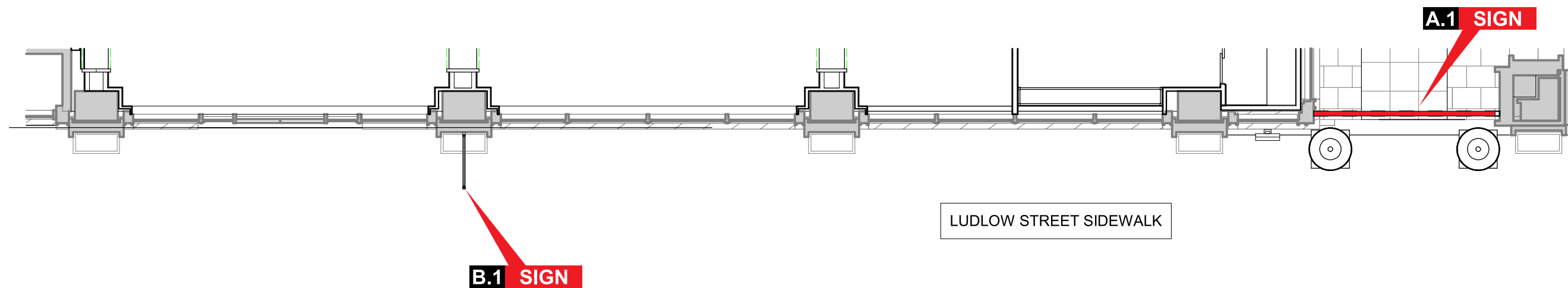
## SIGNAGE PACKAGE





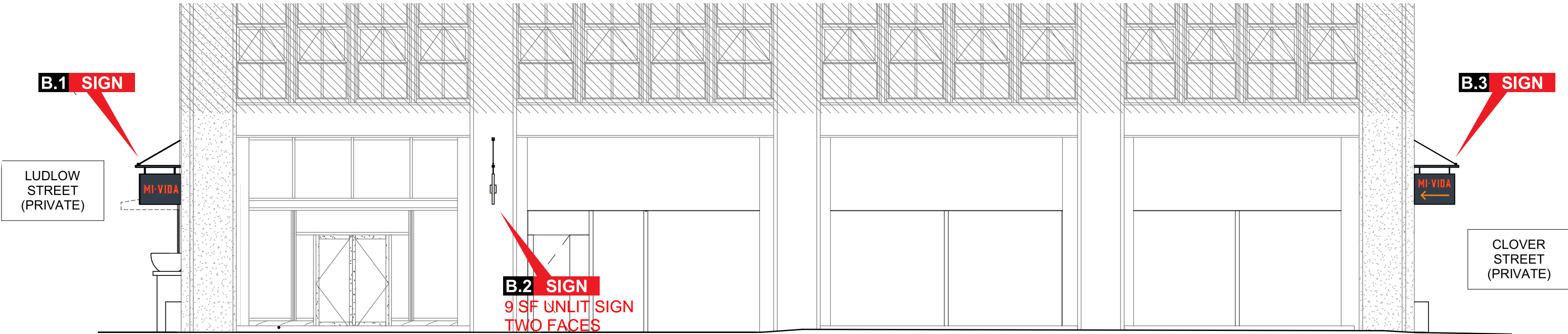


**E1 LUDLOW STREET ELEVATION**  
Scale: 1/8" = 1'-0"

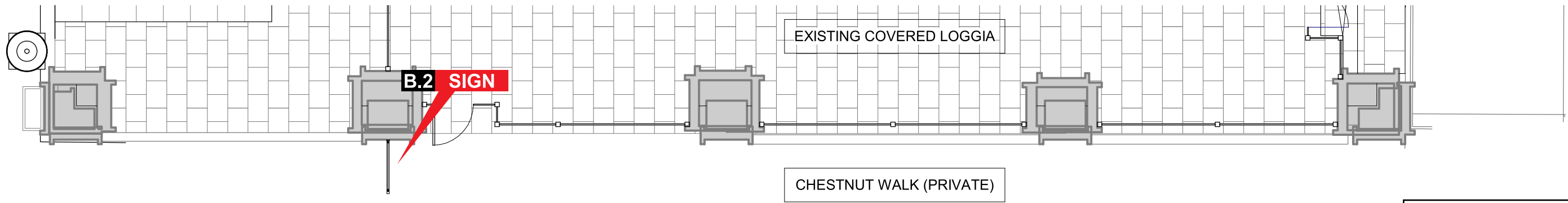


**E2 PLAN VIEW**  
Scale: 1/8" = 1'-0"

46.7 SF OF  
PROPOSED  
SIGNAGE / 52.5 SF  
ALLOWABLE

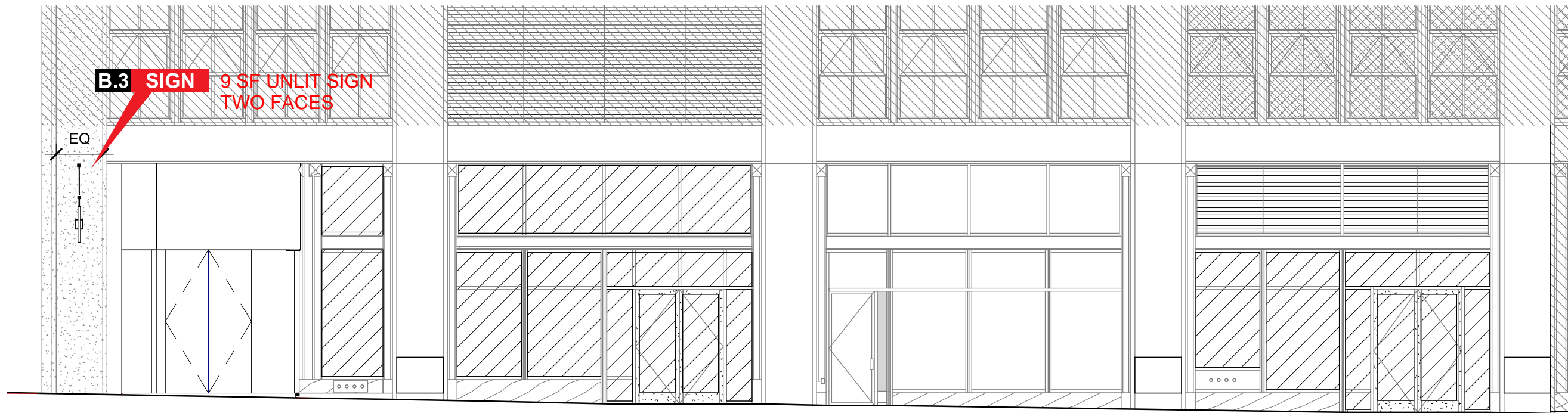


C1 CHESNUT WALK ELEVATION  
Scale: 1/8" = 1'-0" A11A-101

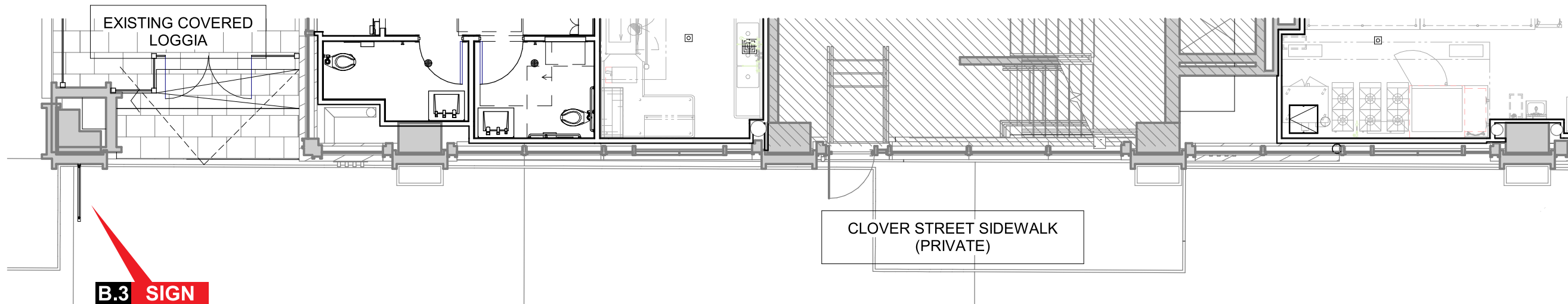


C1 PLAN VIEW  
Scale: 1/8" = 1'-0" A11A-101





**F1 CLOVER STREET ELEVATION**  
Scale: 1/8" = 1'-0"



**F2 PLAN VIEW**  
Scale: 1/8" = 1'-0"

18 SF OF  
PROPOSED  
SIGNAGE / 63.5 SF  
ALLOWABLE





**PROPOSED SIGNAGE RENDERING - LUDLOW STREET**  
MI VIDA - EAST MARKET

**PERKINS —  
EASTMAN**

05/30/25

**Z-301**





**PROPOSED SIGNAGE RENDERING - CHESTNUT WALK AND LUDLOW STREET**  
MI VIDA - EAST MARKET

**PERKINS —  
EASTMAN**

05/30/25

**Z-302**



# **PROPOSED SIGNAGE SHOP DRAWINGS FOR REFERENCE**

Specifications

- 1. Fabricated aluminum sign cabinet to be painted P1 on all visible surfaces.
- 2. Fabricated edge lit aluminum channel letters with custom made faces. Returns to be pained P2 and prismatic faces to be painted P3. Letters to be installed on front of the sign cabinet.

Installation: method of attachment TBD.

**NOTE:** Concept only. Filed check is required.

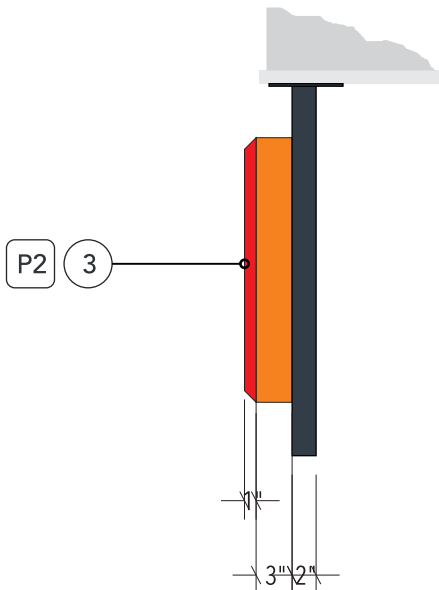
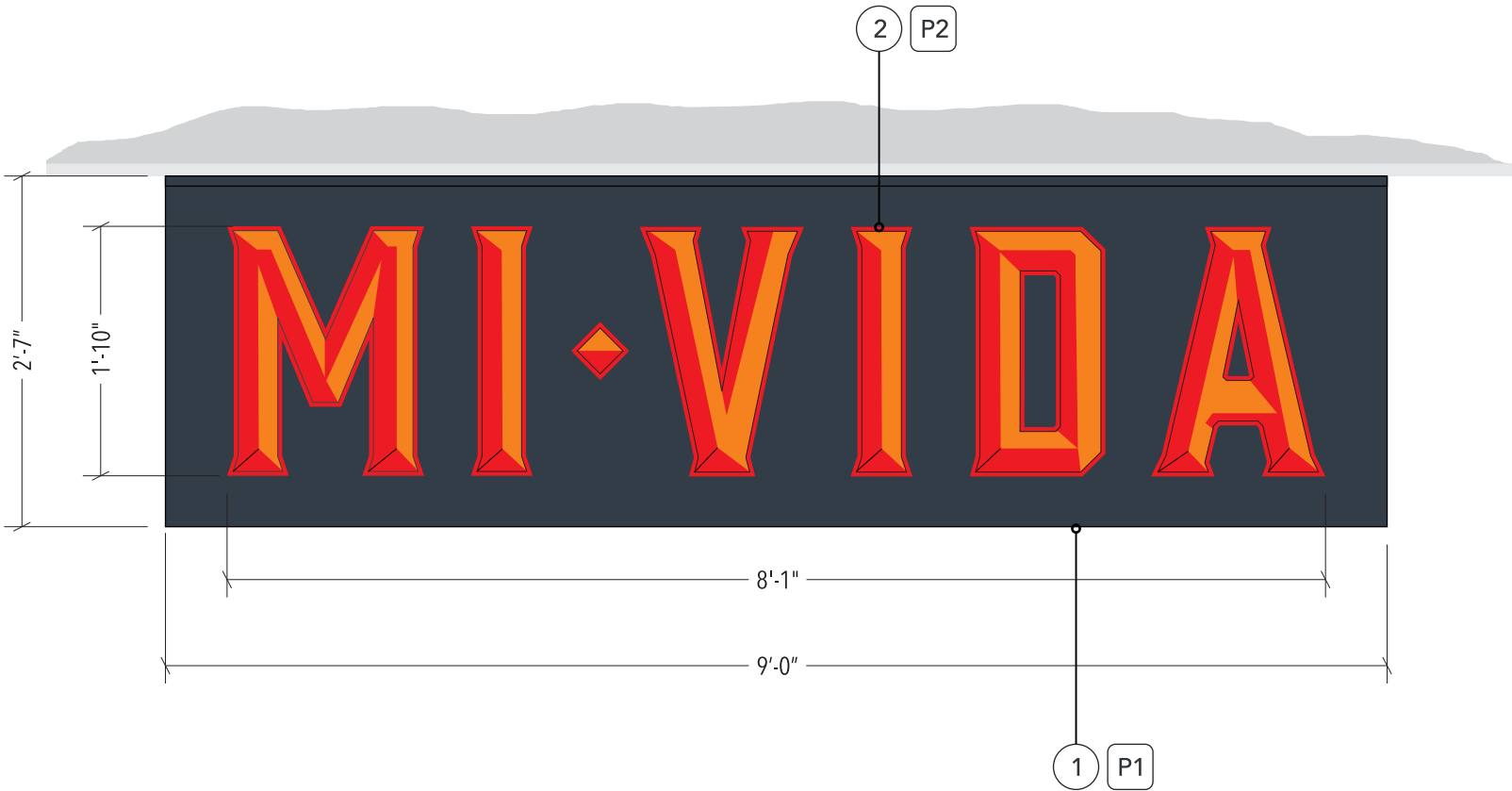
Colors & finishes

- P1. To match building color
- P2. Orange PMS 151C
- P3. Red PMS 485C
- V1. Translucent Red vinyl color to match Red PMS 485C

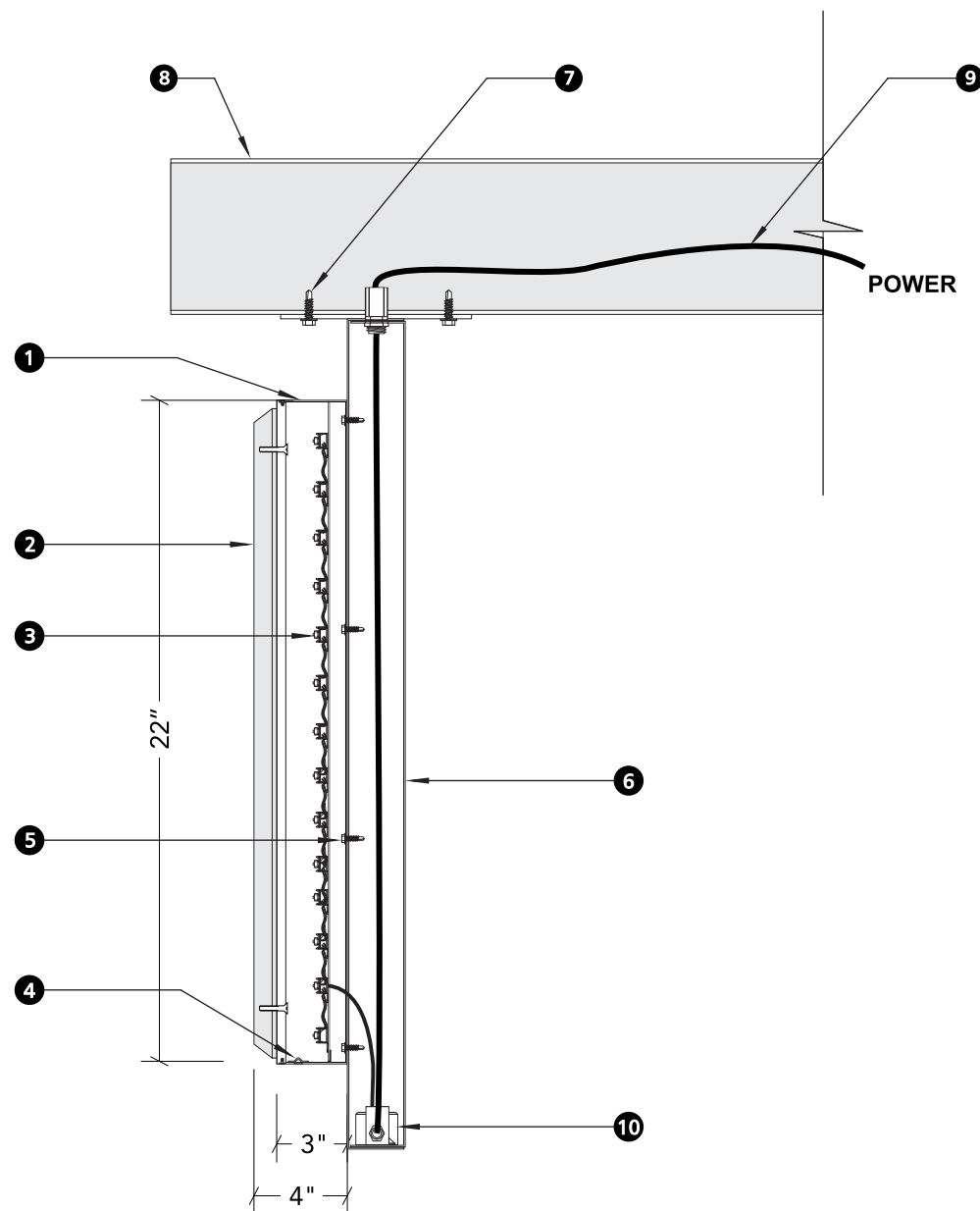


1 Front View  
Scale: 3/4" = 1'-0"

2 Side View  
Scale: 3/4" = 1'-0"



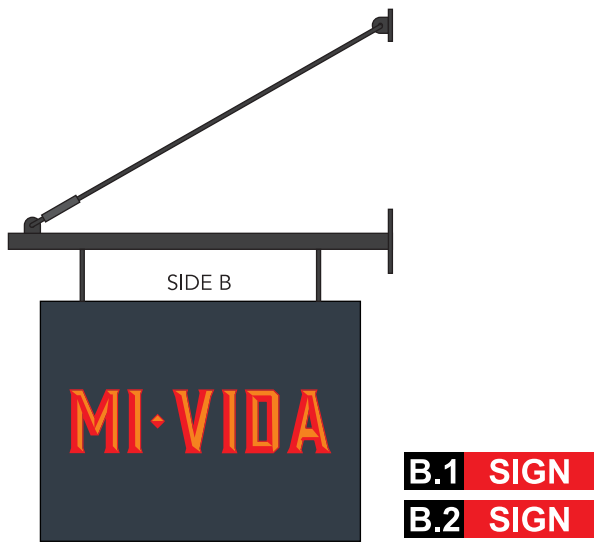
**A1** Channel letters - Side View  
Scale: 1½" = 1'-0"



**Edge-lit Channel Letters | Raceway-Mount**  
**Side Section Detail**  
Scale: 1½" = 1'-0"

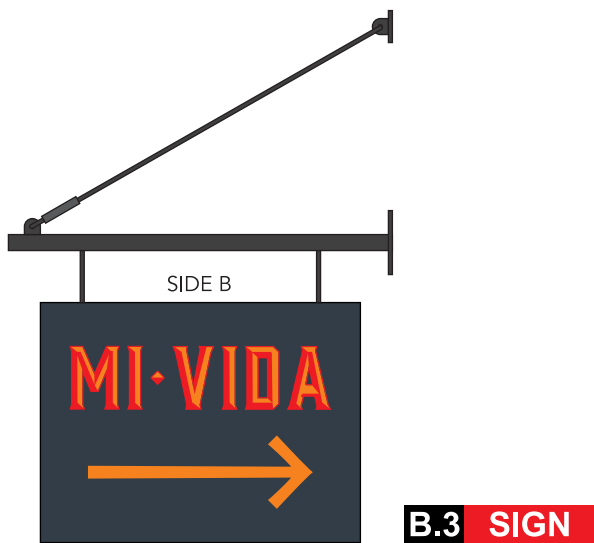
### SPECIFICATIONS

- 1 Returns:** stainless steel painted Orange PMS 151C.
- 2 Faces:** stainless steel prismatic letters to painted Red PMS 485C and bolted to translucent acrylic backing.
- 3 Illumination:** White Warm 3500° LED modules
- 4 Weep holes:** 1/4" diam. with covers
- 5 Fasteners (letters to sign cabinet):** Self-tapping screws through letter backs
- 6 Sign cabinet:** 2" deep aluminum
- 7 Fasteners (cabinet to ceiling ):** Stainless steel self drilling SMS (TBD)
- 8 Existing decorative element:** stainless steel (TBD)
- 9 Primary electrical feed:** Wired to be installation on site by others, coordinated with G.C.
- 10 LED power supplies:** Enclosed in sign cabinet with connections to primary feed made in junction box as needed, coordinated with G.C.

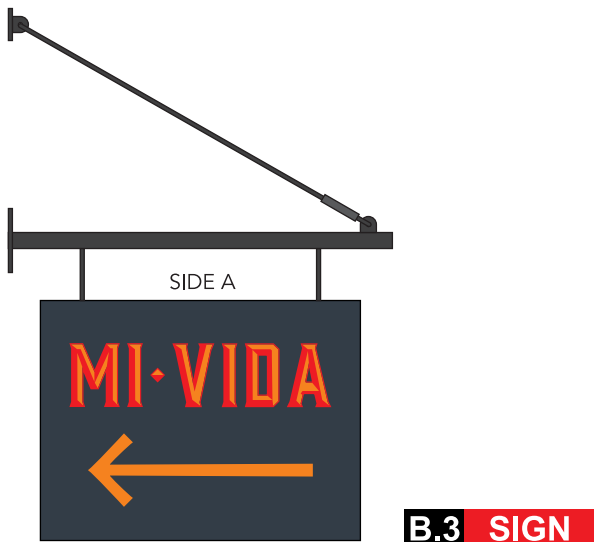


**B.1 SIGN**

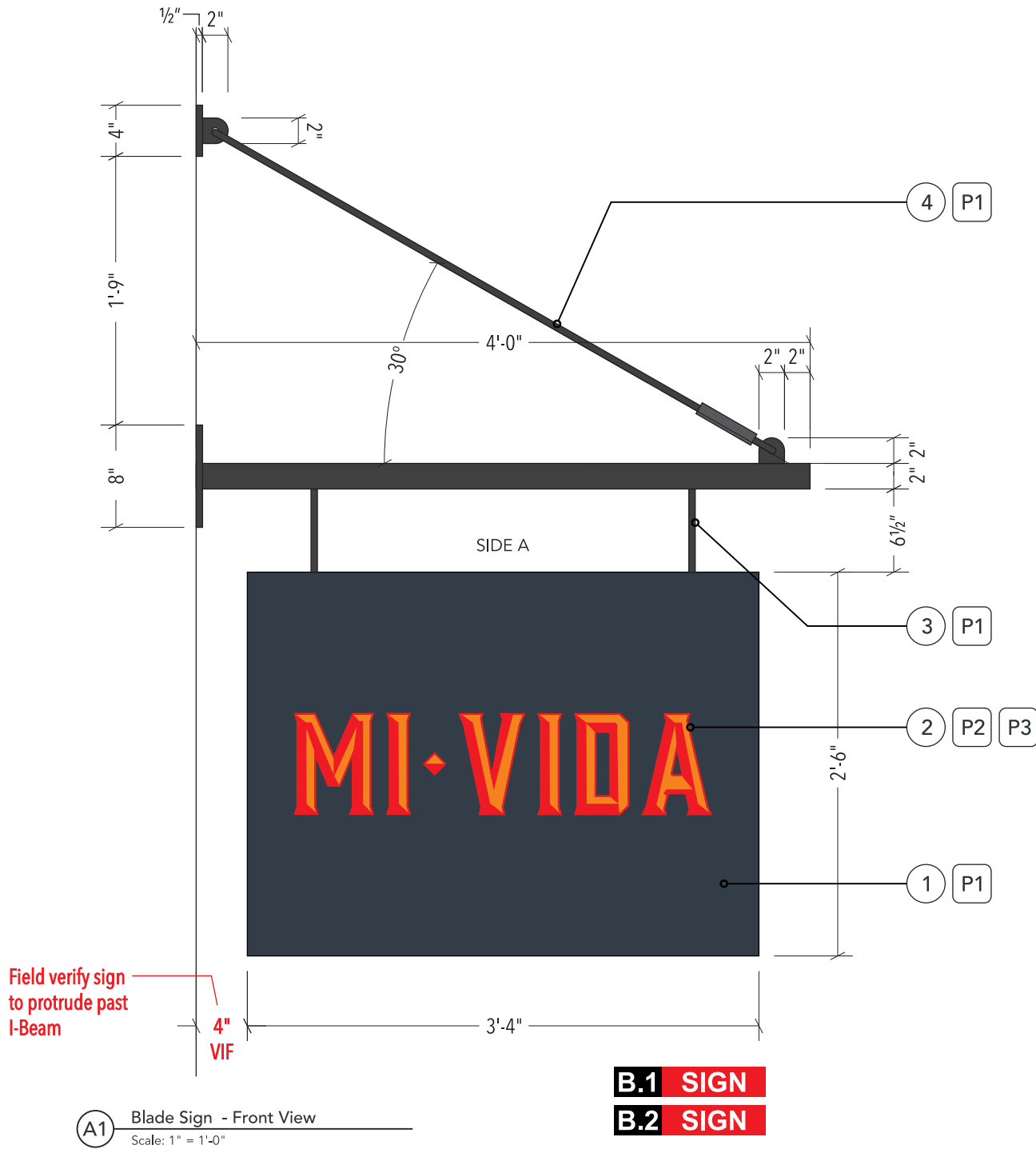
**B.2 SIGN**



**B.3 SIGN**



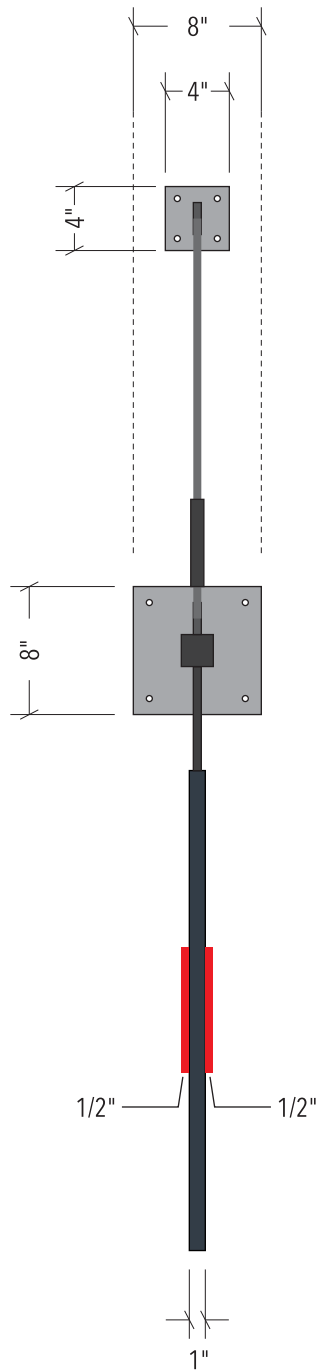
**B.3 SIGN**



**A1** Blade Sign - Front View  
Scale: 1" = 1'-0"

**B.1 SIGN**

**B.2 SIGN**



**BLADE SIGN**

QTY: (3X) DOUBLE FACED

**B**

**Specifications**

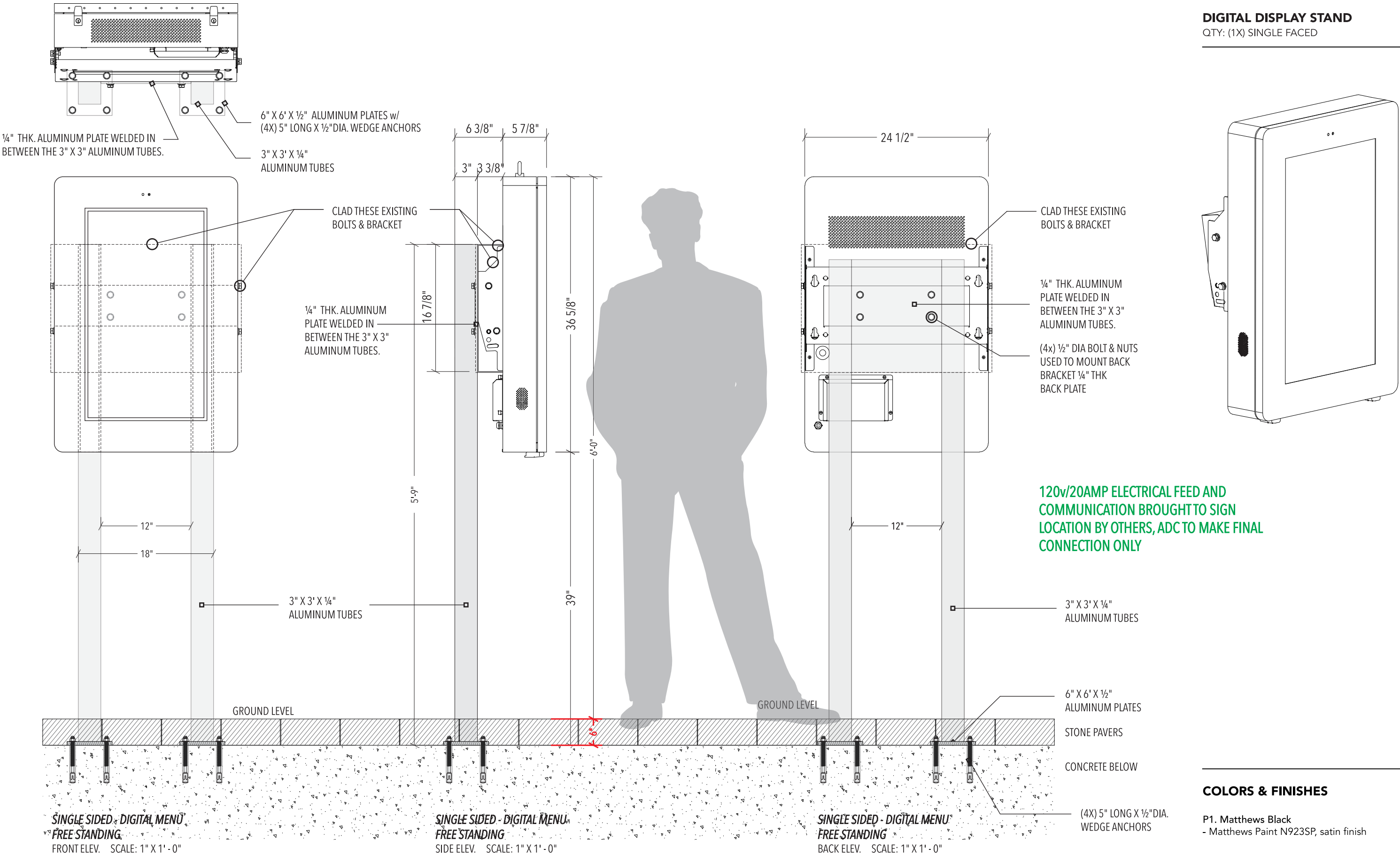
- 1" deep fabricated aluminum frame sign cabinet painted.
- 1/2" thick acrylic copy painted two colors.
- Custom fabricated aluminum sign frame with 1/2" thick aluminum mounting plates painted.
- Rod with turnbuckle assembly (Final Details TBD)

Installation: method of attachment TBD.

**NOTE:** Concept only. Filed check is required.

**Colors & finishes**

- P1. To match building color
- P2. Orange PMS 151C
- P3. Red PMS 485C



COLORS & FINISHES

P1. Matthews Black  
- Matthews Paint N923SP, satin finish



# EXISTING SITE PHOTOS





VIEW OF LUDLOW STREET FACADE

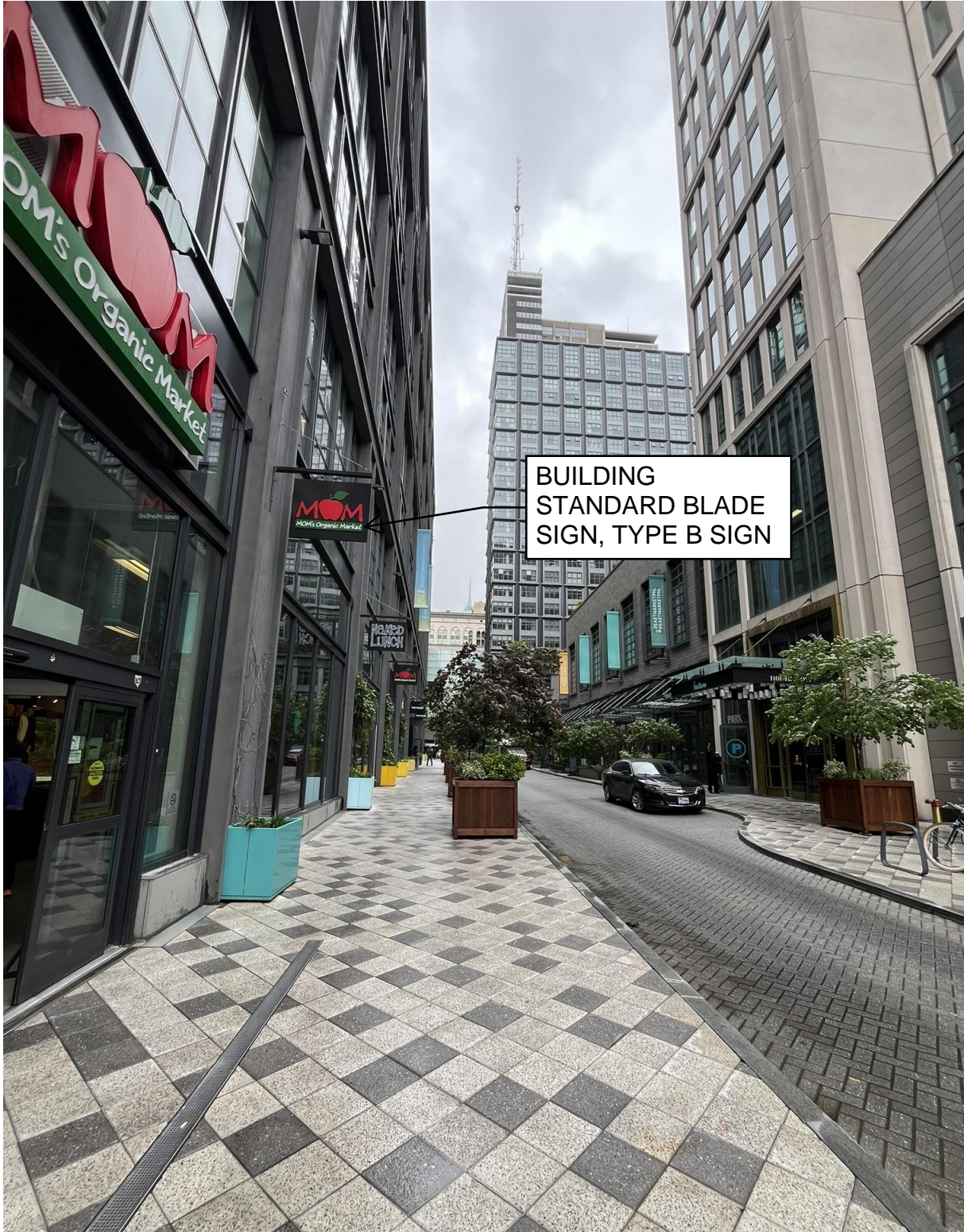


VIEW OF CHESTNUT STREET FACADE





VIEW OF CHESTNUT WALK FACADE  
AND CLOVER STREET FACADE



BUILDING  
STANDARD BLADE  
SIGN, TYPE B SIGN

VIEW OF LUDLOW STREET FACADE WITH SITE  
STANDARD SIGNAGE