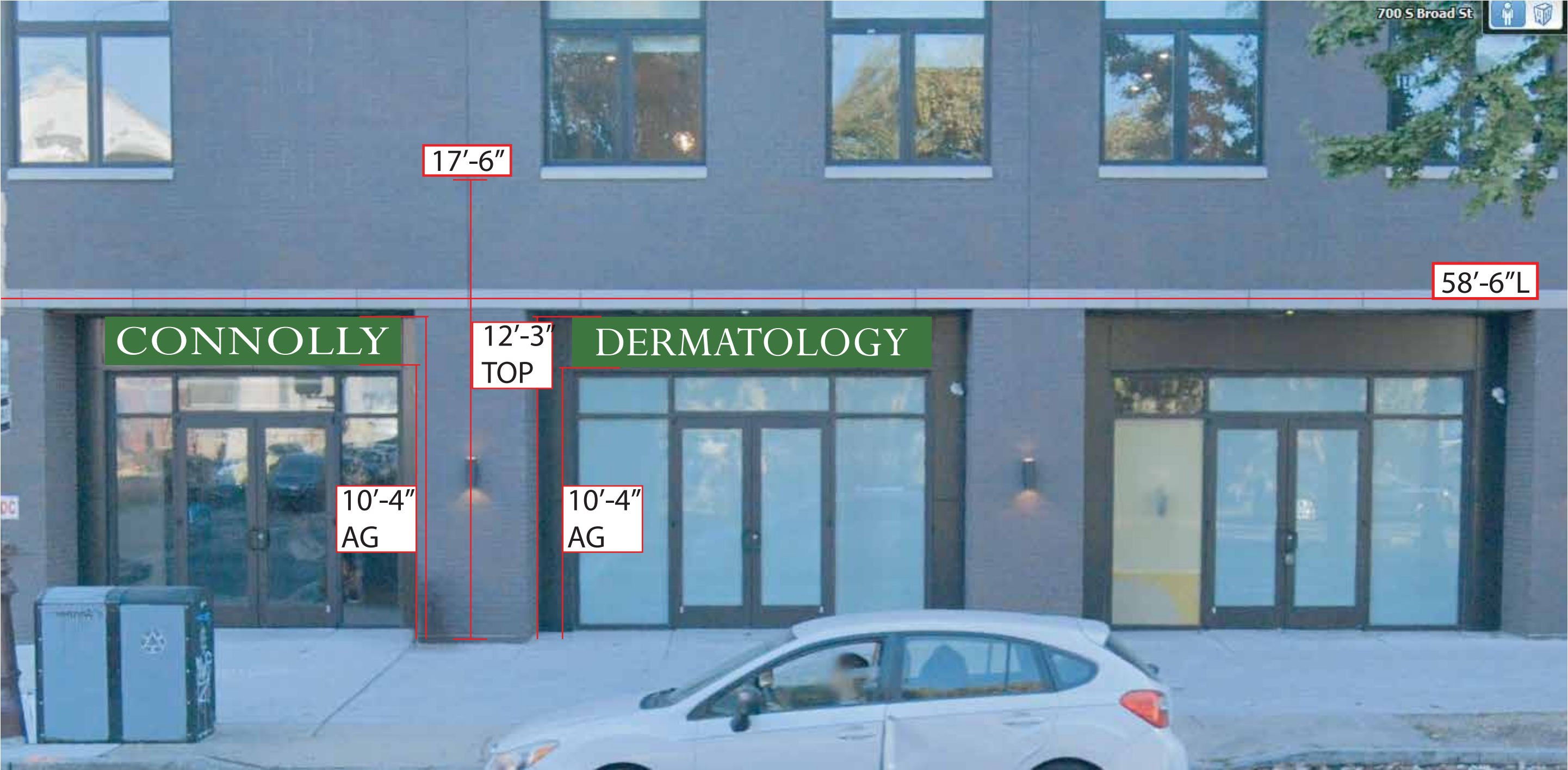


Section View
Scale: Not To Scale

Illuminated Push-Through on Cabinet
3"dpth cabinet with 1/8" Aluminum Face and 1/2" Push Through Acrylic (White Mounted to Existing Metal

Scale
NTS

Square Footage:
46.98 SF



First Floor/Ground Level
Signage Location 1

First Floor/Ground Level
Signage Location 2



DRAWINGS
PREPARED BY:

WURZ SIGN
SYSTEMS

2600 Haddonfield Rd. Pennsauken, NJ 08110
Phone: (856) 461-4397 Fax: (856) 461-4398

This is an original unpublished drawing created by WURZ SIGN SYSTEMS. It is submitted for your exclusive use, in connection with a project being planned. It is not to be shown to anyone outside your organization, nor is it to be used, reproduced, copied or exhibited in any fashion. This drawing is the property of WURZ SIGN SYSTEMS

REVISIONS

LOCATION

Connolly Dermatology
701 S. Broad Street
Philadelphia, PA

DRAWN BY:	NLR	SCALE:	AS NOTED
DATE:	4/25/25	SALES:	PMD
Connolly Derm Philly			
JOB#:	SHT #:		3

DAYTIME



NIGHTTIME



DRAWINGS
PREPARED BY:

WURZ SIGN SYSTEMS

2600 Haddonfield Rd. Pennsauken, NJ 08110
Phone: (856) 461-4397 Fax: (856) 461-4398

This is an original unpublished drawing created by WURZ SIGN SYSTEMS. It is submitted for your exclusive use, in connection with a project being planned. It is not to be shown to anyone outside your organization, nor is it to be used, reproduced, copied or exhibited in any fashion. This drawing is the property of WURZ SIGN SYSTEMS

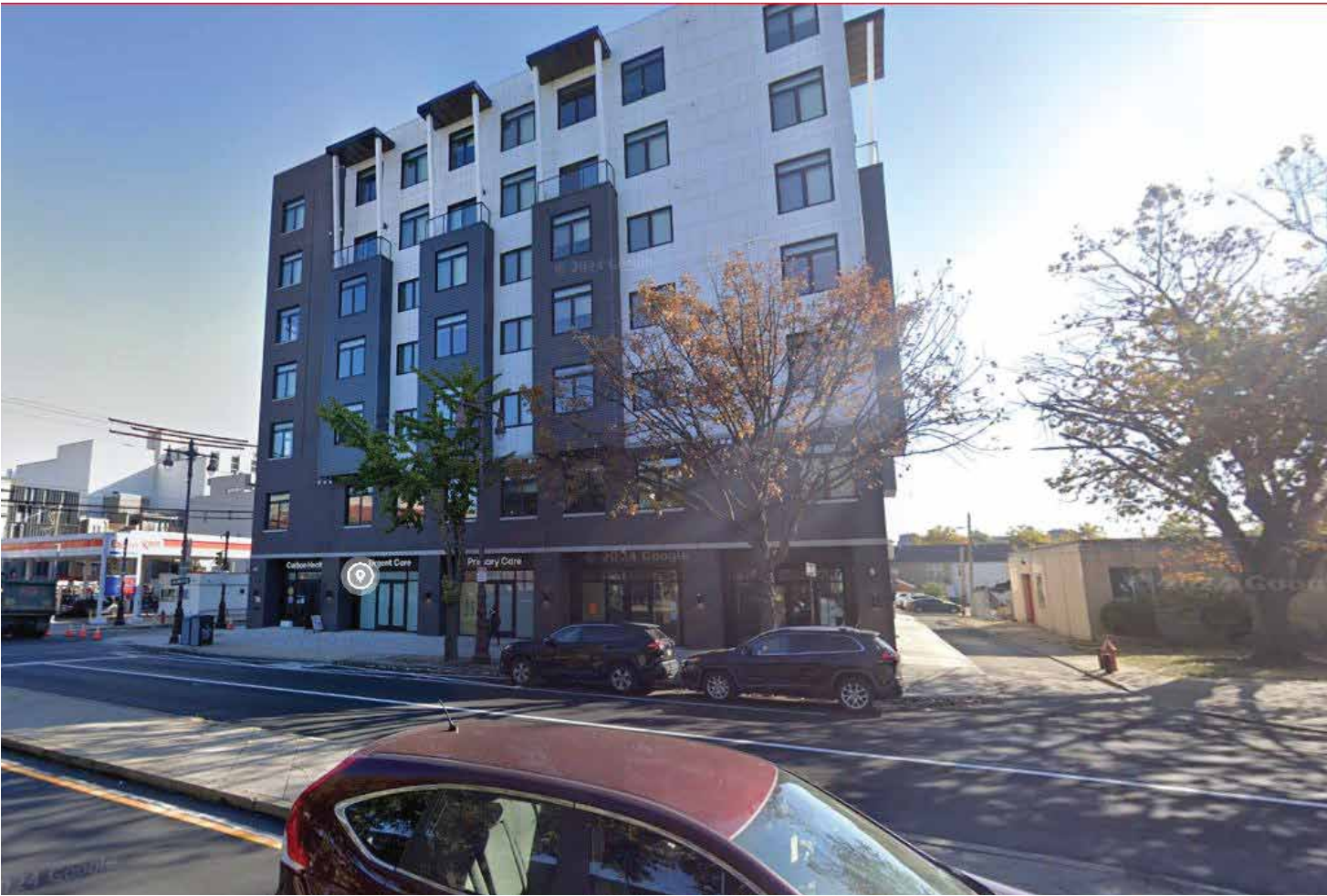
REVISIONS

LOCATION

Connolly Dermatology
701 S. Broad Street
Philadelphia, PA

DRAWN BY:	NLR	SCALE:	AS NOTED
DATE:	4/25/25	SALES:	PMD
Connolly Derm Philly			
JOB#:	SHT #:		4





<div>DRAWINGS PREPARED BY:</div> <div><div><div>WURZ</div><div>SIGN SYSTEMS</div></div><div>2600 Haddonfield Rd. Pennsauken, NJ 08110 Phone: (856) 461-4397 Fax: (856) 461-4398</div></div>	<div>This is an original unpublished drawing created by WURZ SIGN SYSTEMS. It is submitted for your exclusive use, in connection with a project being planned. It is not to be shown to anyone outside your organization, nor is it to be used, reproduced, copied or exhibited in any fashion. This drawing is the property of WURZ SIGN SYSTEMS</div>	REVISIONS	LOCATION		DRAWN BY: NLR	SCALE: AS NOTED
			Connolly Dermatology 701 S. Broad Street Philadelphia, PA		DATE: 4/25/25	SALES: PMD
					Connolly Derm Philly	
					JOB#:	SHT #: 6