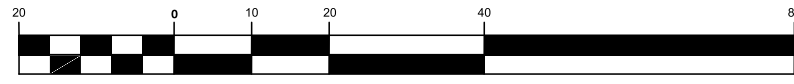


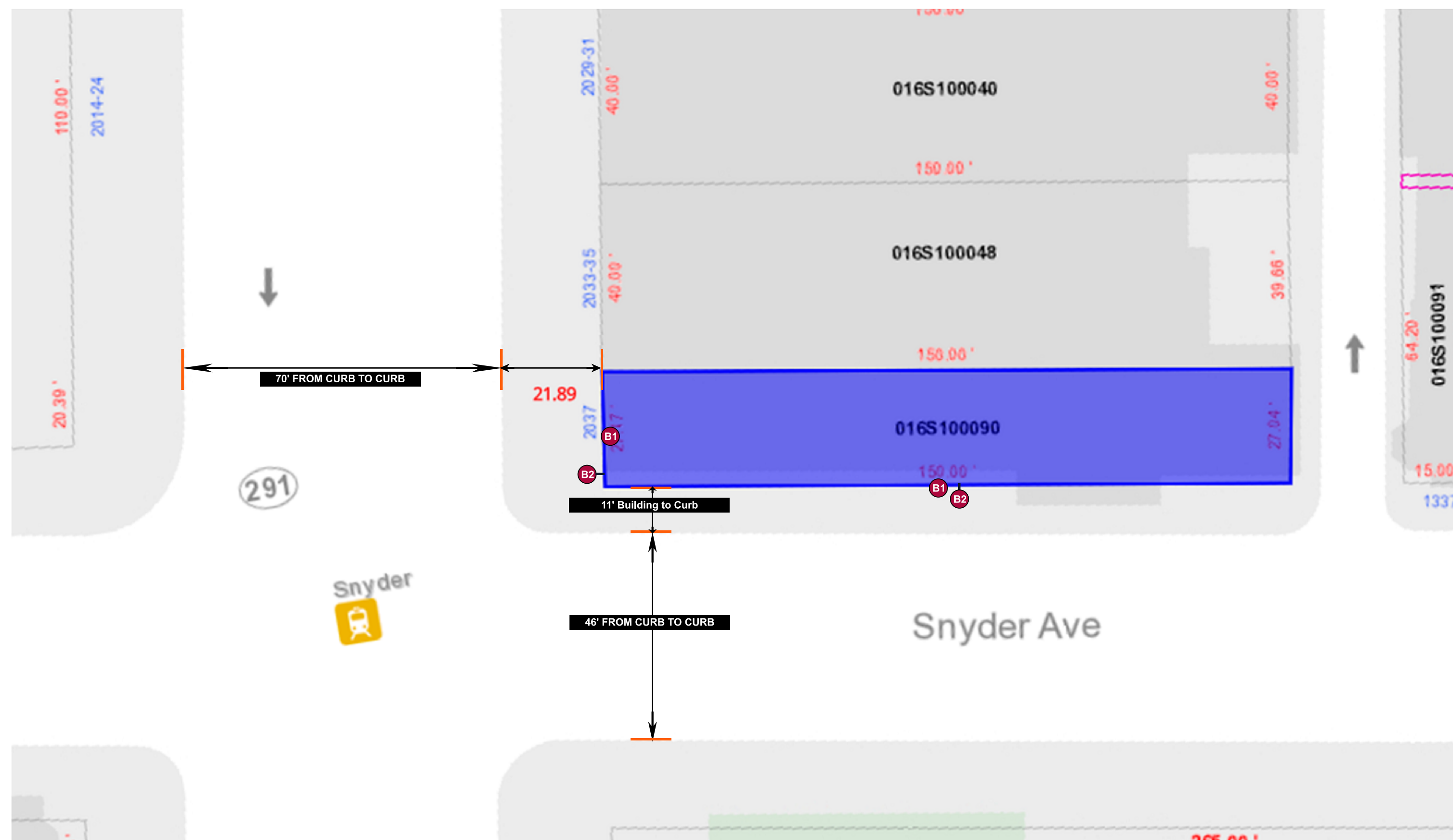
- B1** Channel Letters
- B2** Roof Mounted Cabinet Replacement

GRAPHIC SCALE



(IN FEET)
1 inch = 20 ft.

Property Square footage=4075.5



PREPARED BY / SIGN CONTRACTOR:

PREPARED FOR

Signarama
The way to grow your business

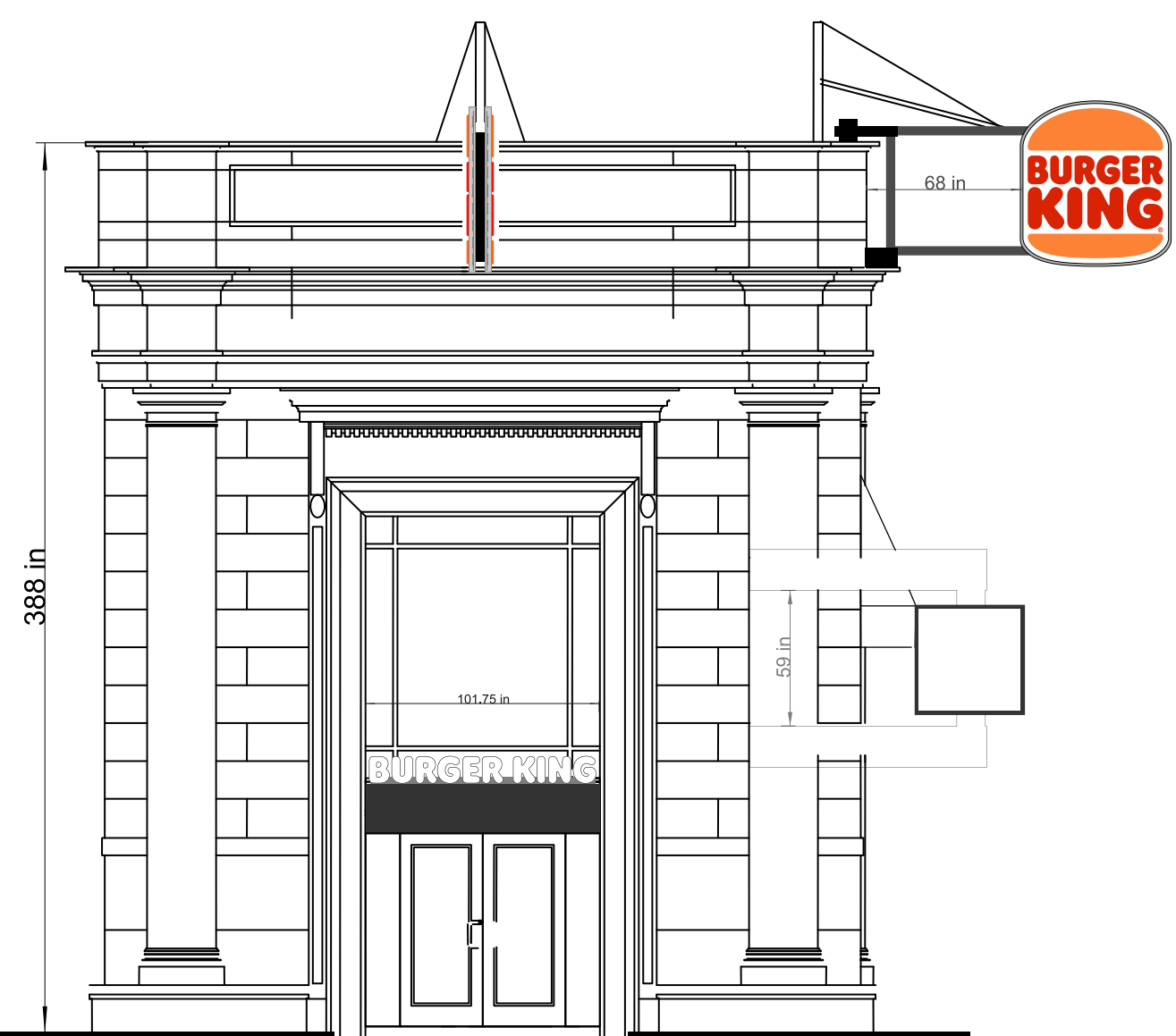
The way to grow your business.

Production Documents

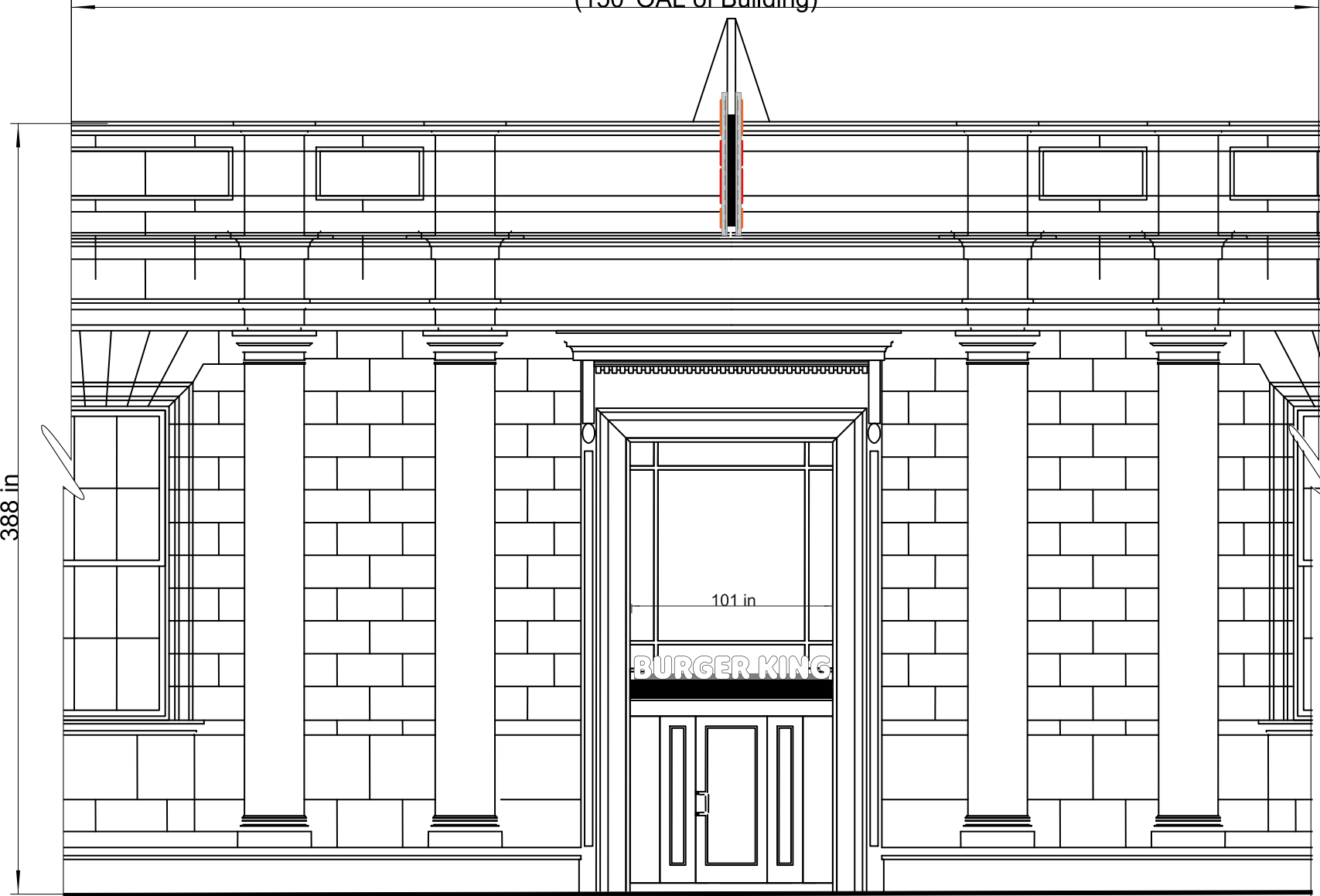
101 E Luzerne St Philadelphia, PA 19124
215-333-3337 | F: 215-333-7442

www.signaramaphilly.com | design@signaramaphilly.com

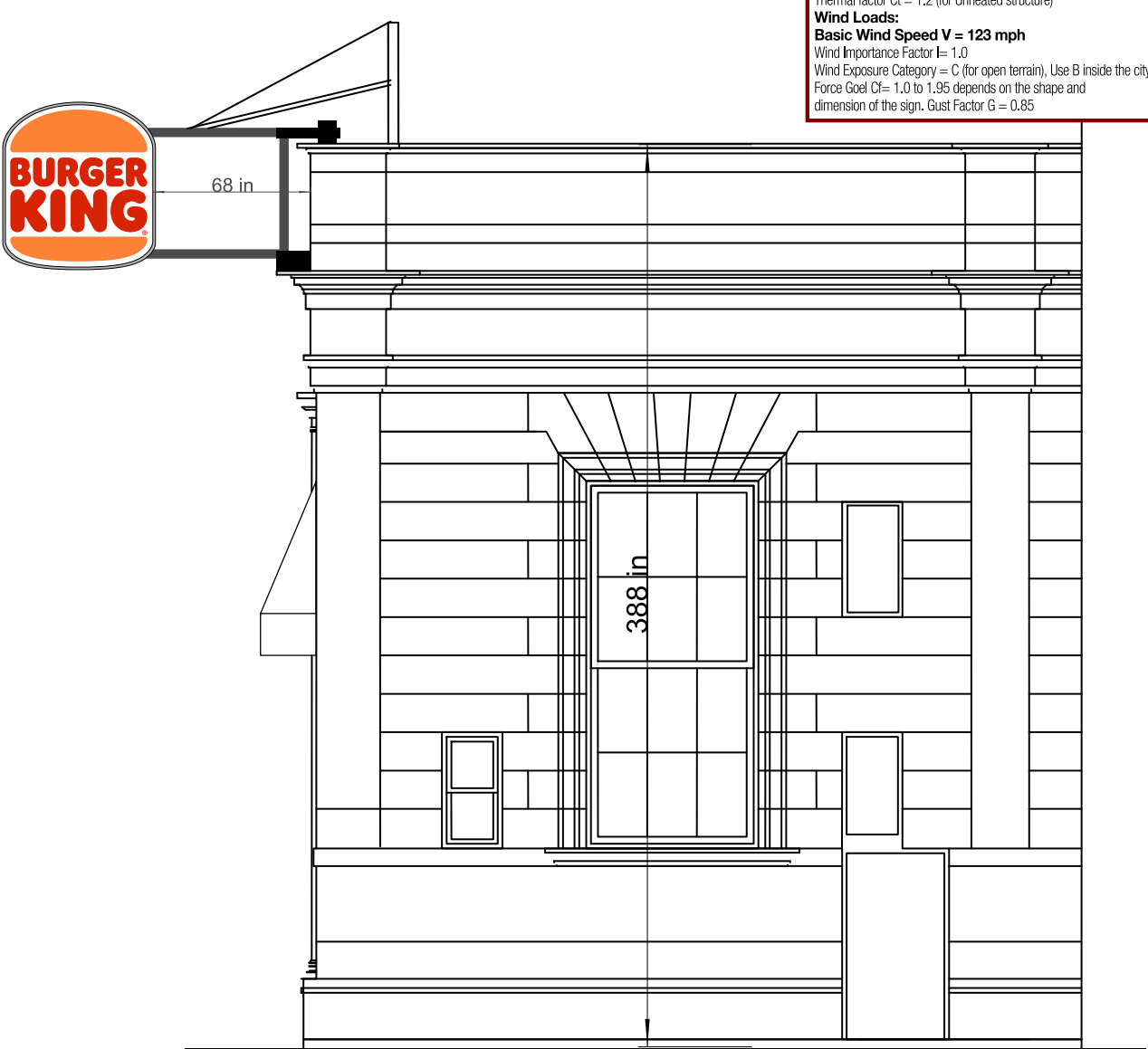
Burger King
2037 S Broad St
Philadelphia, PA 19148



Broad Street Elevation

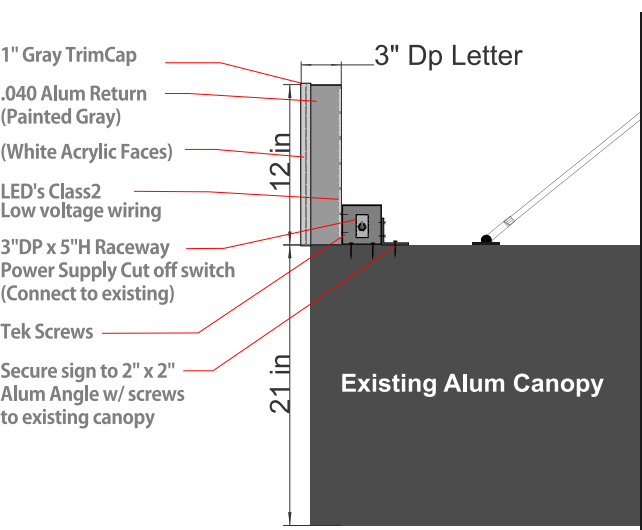
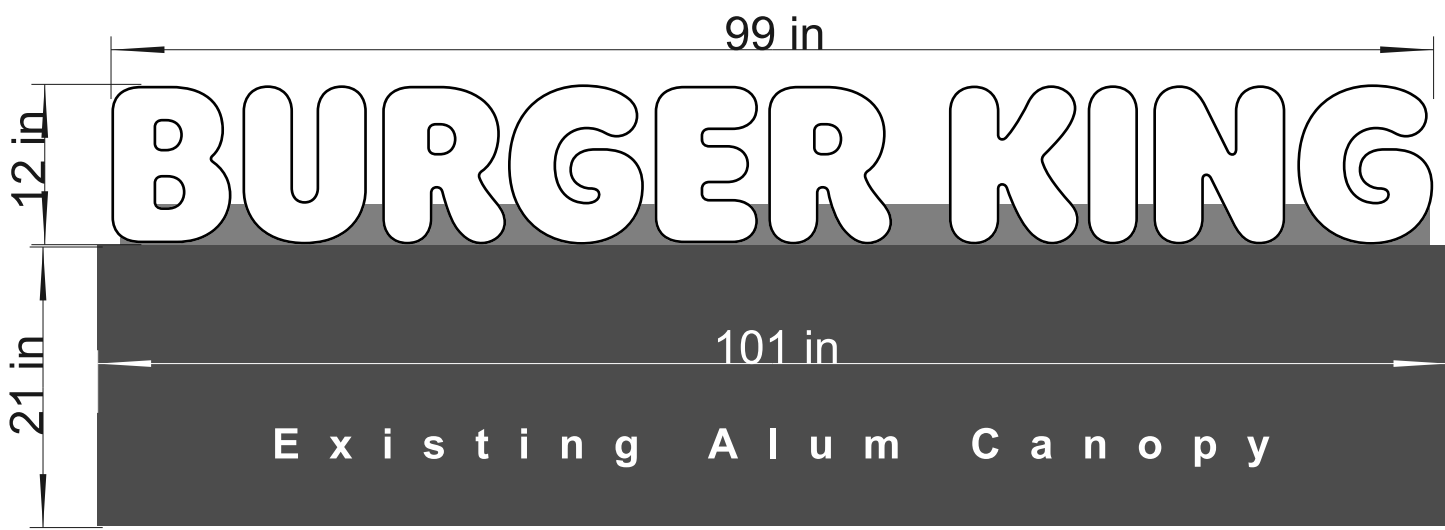


Snyder Street Elevation



West View Elevation View

DESIGN CRITERIA	PA
Use IBC 2015 and ASCE 7-05	
Ground Snow Load - Pg = 25 psf	
Snow Exposure Factor Ce = 0.9 for fully exposed	
(1.0 for Partially exposed) Snow Load Importance factor I = 1.0	
Thermal factor Ct = 1.2 (for Unheated structure)	
Wind Loads:	
Basic Wind Speed V = 123 mph	
Wind Importance factor I = 1.0	
Wind Exposure Category = C (for open terrain), Use B inside the city.	
Force Coefficient = 1.0 to 1.95 depends on the shape and dimension of the sign, Gust Factor G = 0.85	



(2 Sets) Channel Letters

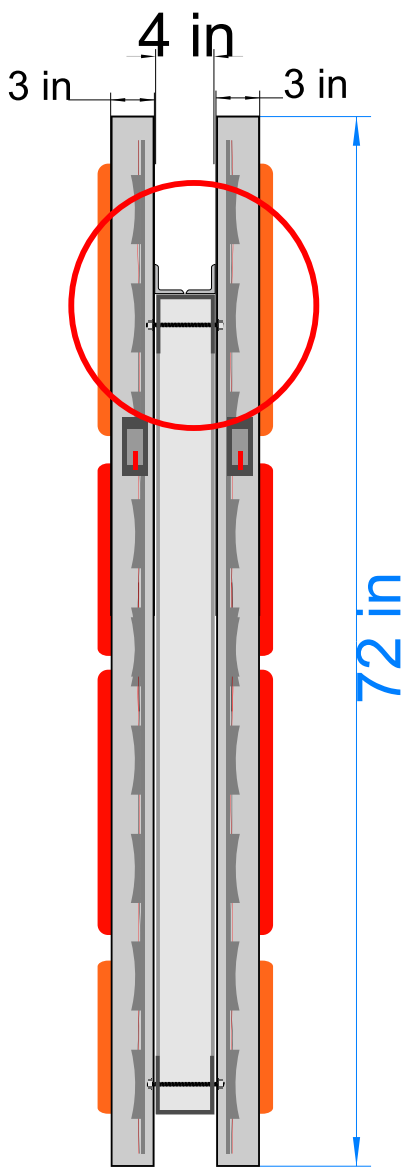
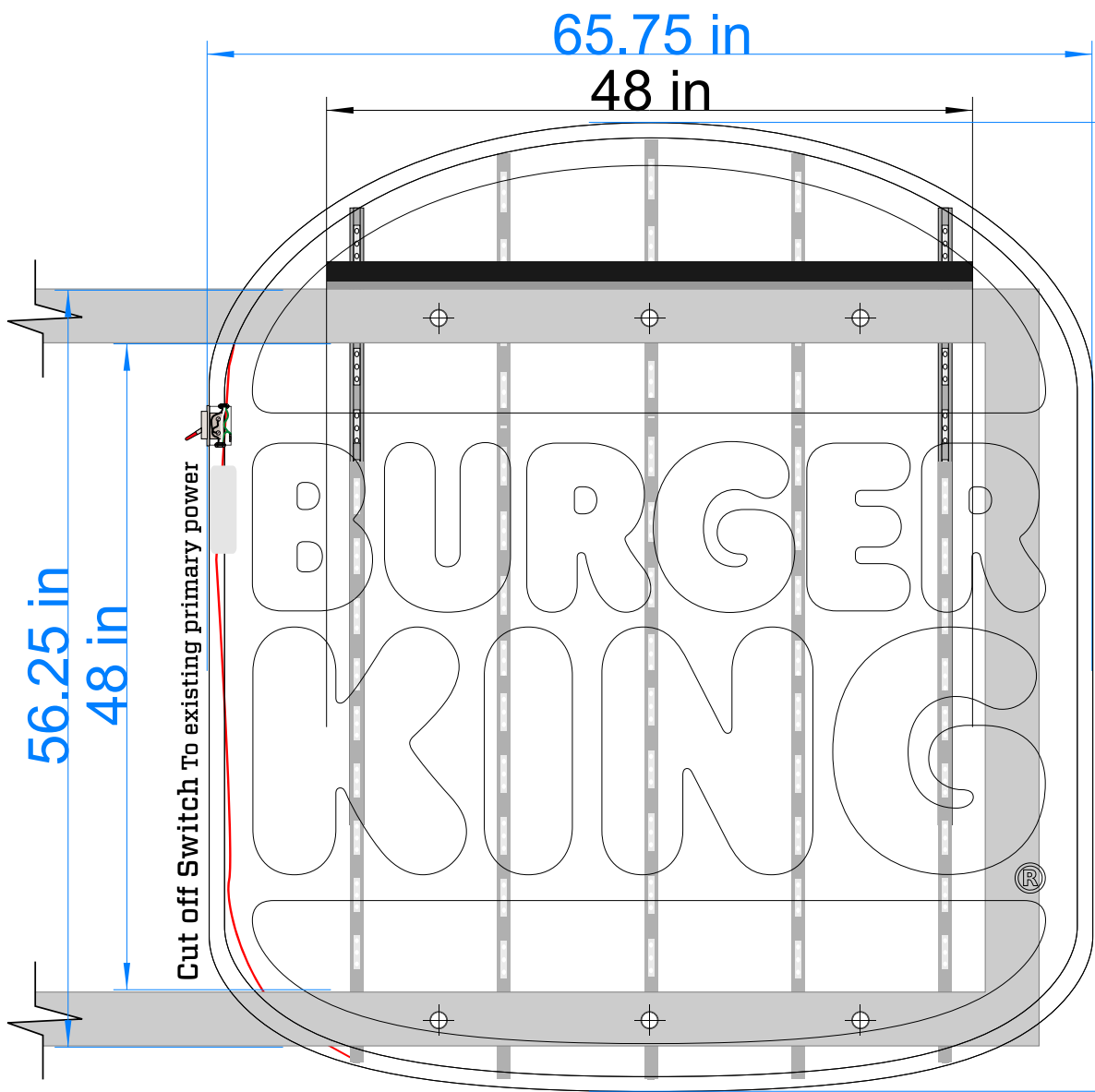
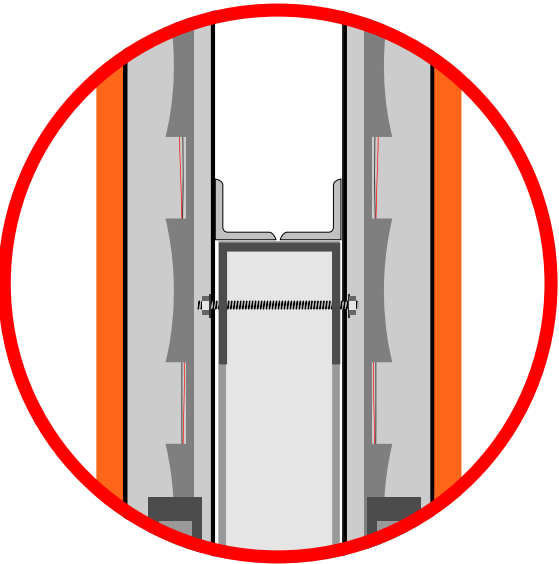
12" Internally Illuminated Individual Channel Letters mounted to Raceway, Secured to existing Canopy

8.25 SQ FT

(2 Sets Single Face Illuminated Cabinets)

3"DP x 65.75 x 72" To be Mounted to existing but building Frame. Secure with all thread Grade 8 nut and bolts. 48"Long 2" x 2" Alum Angle to support to Frame.

32.875 SQ FT

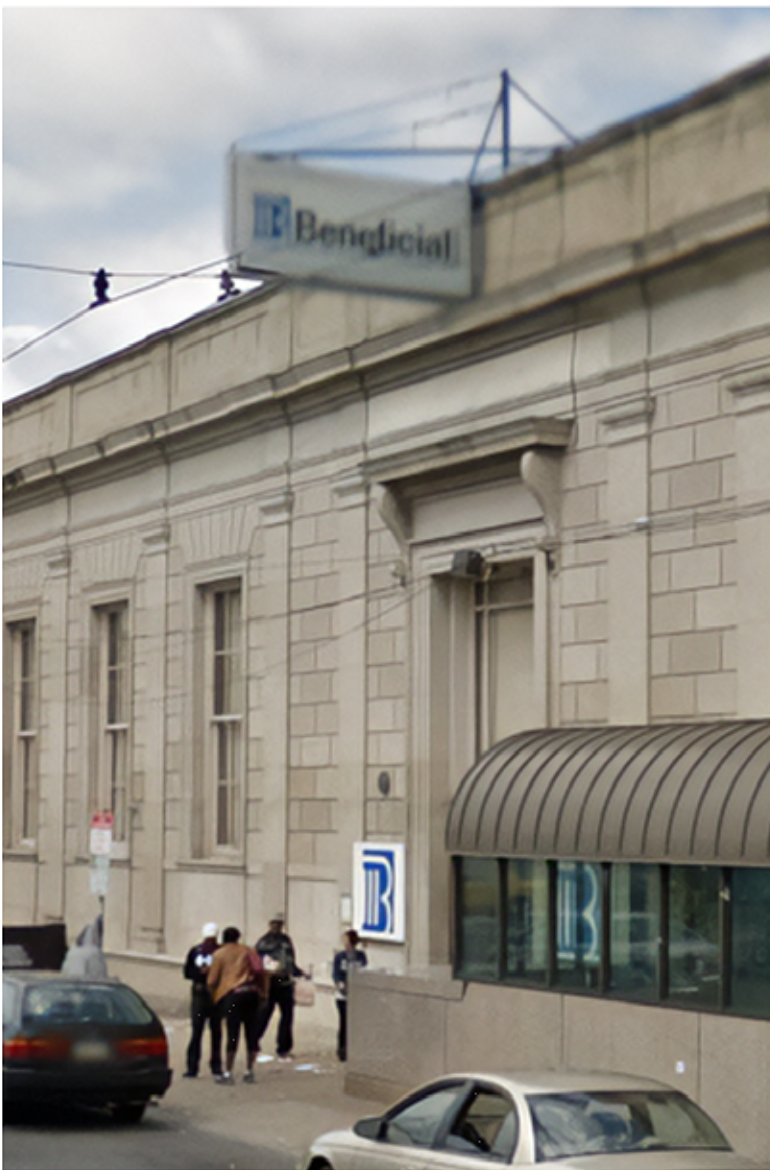


PREPARED BY/ SIGN CONTRACTOR:	PREPARED FOR:
Signarama The way to grow your business. Production Documents 101 E Luerns St Philadelphia, PA 19124 215-333-3337 F: 215-333-7442 www.signaramaphilly.com design@signaramaphilly.com	Burger King 2037 S Broad St Philadelphia, PA 19148

Existing (Location One)



Broad Street Elevation



Existing (Location Two)



Snyder Street Elevation



Previous Signage on Building

Burger King Logo

Colors

Logo sign must use approved 3M films, applied on the inside face of a polycarbonate sheet. Back spraying of faces is not allowed. Interior to be painted white.

- 3M 3630-84 Tangerine
- 3M 3630-143 Poppy Red
- 3M 3635-030 White Diffuser

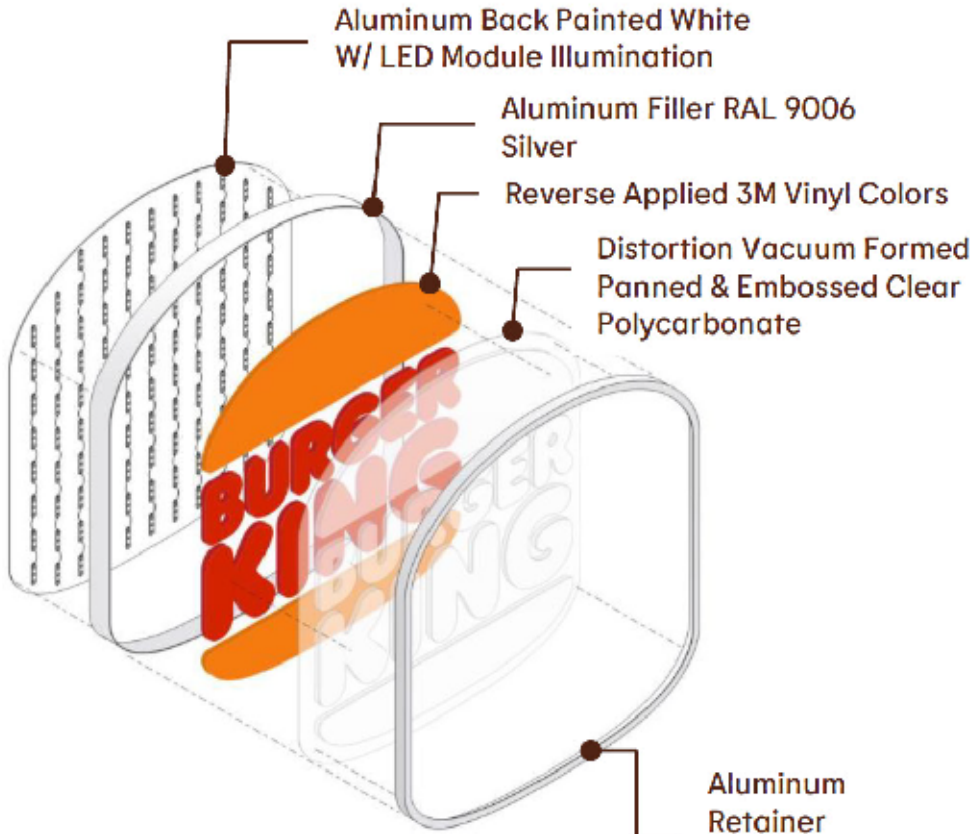


Distortion Vacuum Formed Panned & Embossed Polycarbonate Face Details



Logo Colors

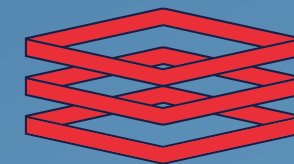
- Bun Logo:
3M 3630-84
Tangerine
- White Diffuser:
3M 3635-30
White
- Copy:
3M 3630-143
Poppy Red
- Filler / Retainer:
RAL 9006 White
Aluminum



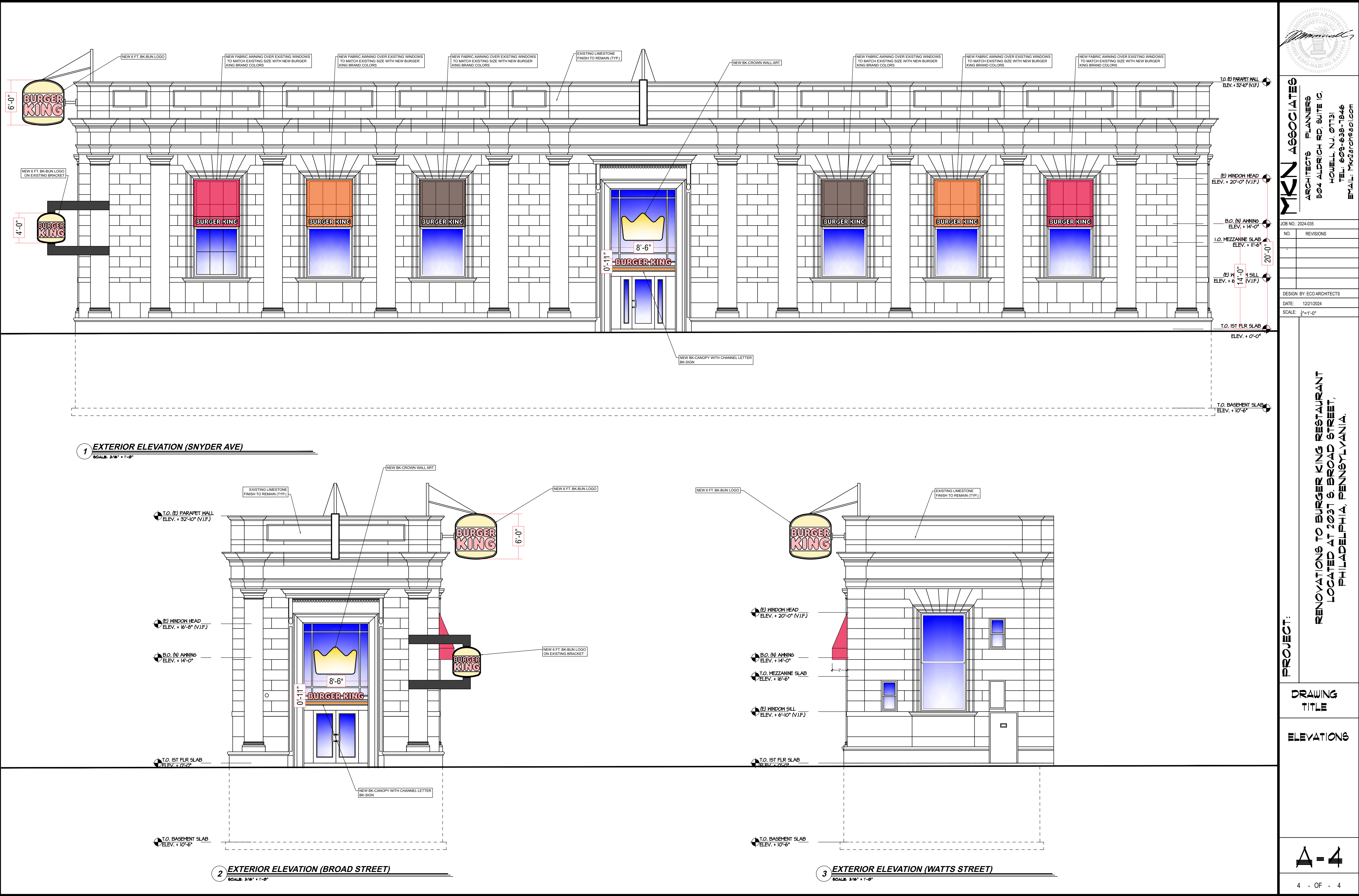
Logo Construction

PREPARED BY/ SIGN CONTRACTOR:	PREPARED FOR:
Signarama The way to grow your business. Production Documents 101 E Luaneau St Philadelphia, PA 19124 215-333-3337 F: 215-333-7442 www.signaramaphilly.com design@signaramaphilly.com	Burger King 2037 S Broad St Philadelphia, PA 19148

BURGER KING #36779
2037 S. BROAD STREET
PHILADELPHIA, PA 19148



ENTERA
Your total branding solution





MKN ASSOCIATES
ARCHITECTS PLANNERS
504 ALDRICH RD, SUITE 10,
HOVELL, N.J. 07731
TEL: 609-638-7846
EMAIL: MKNAarch@aol.com

JOB NO.:	2024-035
NO.	REVISIONS
DESIGN BY:	ECO ARCHITECTS
DATE:	12/21/2024
SCALE:	1/8"=1'-0"

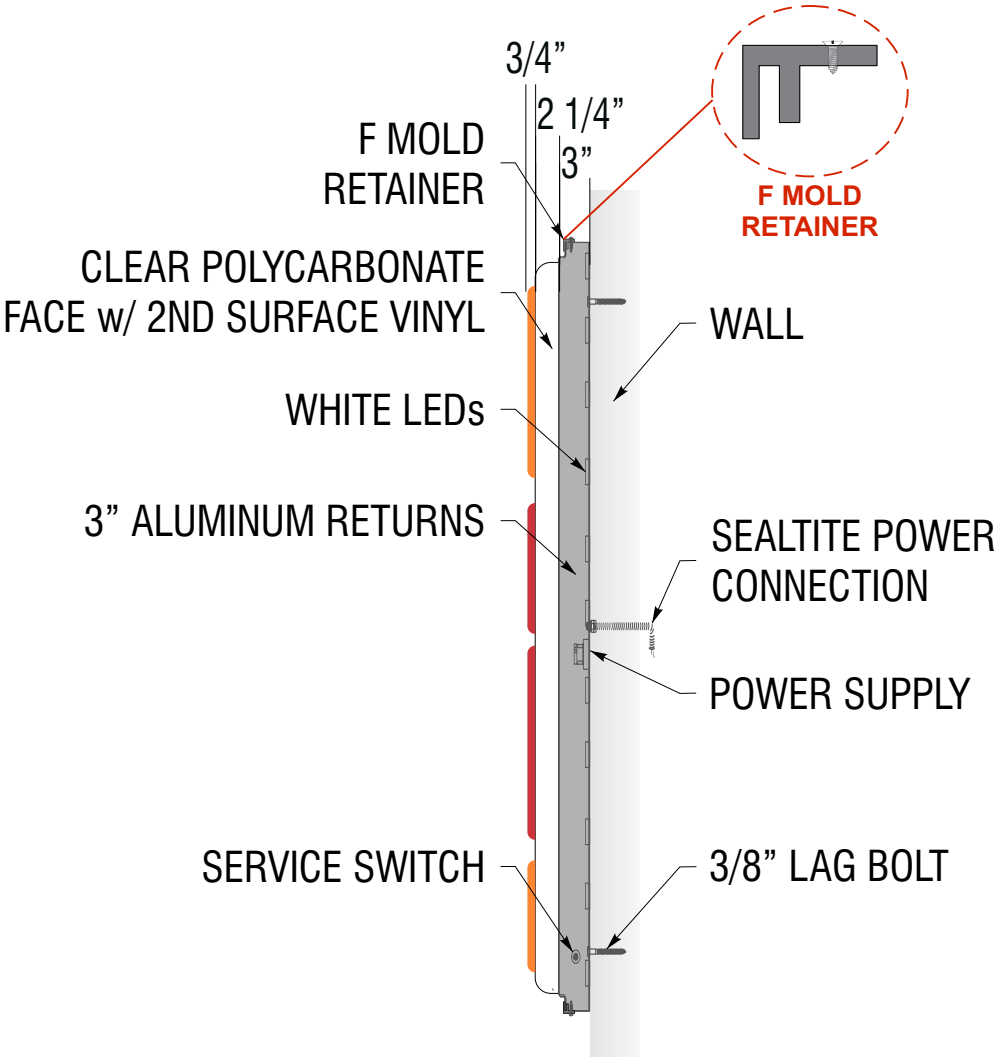
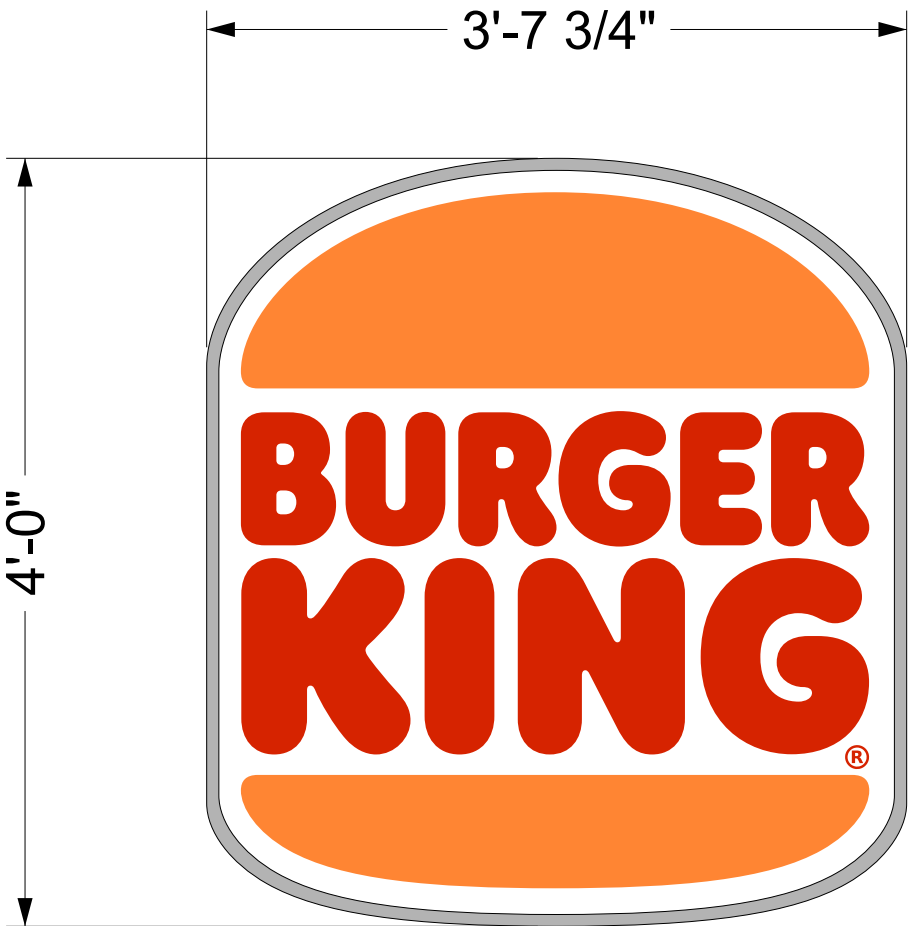
PROJECT:

RENOVATIONS TO BURGER KING RESTAURANT
LOCATED AT 2031 S. BROAD STREET,
PHILADELPHIA, PENNSYLVANIA.

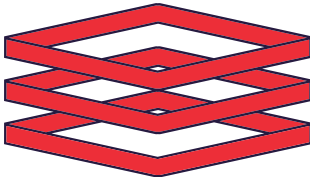
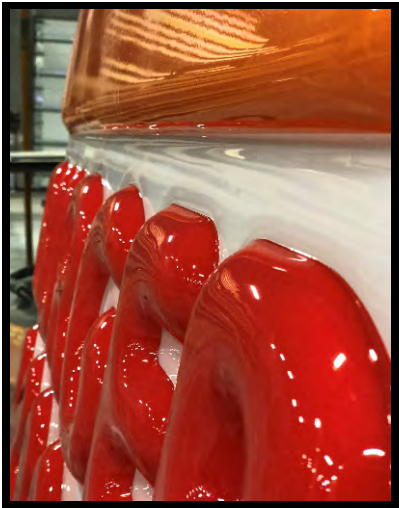
DRAWING
TITLE

ELEVATIONS

4' LED ILLUMINATED WALL SIGN - 13.33 SQ. FT.



WALL SIGN: S/F LED ILLUMINATED CABINET WITH CLEAR SOLAR GRADE POLYCARBONATE VACUUM FORMED PANNED AND EMBOSSED FACES. 3M TRANSLUCENT VINYL APPLIED TO 2ND SURFACE WITH 3M #3635-30 WHITE DIFFUSER.



ENTERA

Your total branding solution

5900 VENTURE CROSSINGS BLVD
PANAMA CITY, FL 32409
PH: 850-763-7982
FAX: 850-392-0673
www.enterabranding.com

THIS DOCUMENT CONTAINS PROPRIETARY AND CONFIDENTIAL INFORMATION OF ENTERA, LLC, AND SHALL NOT BE USED, DISCLOSED OR REPRODUCED, IN WHOLE OR IN PART, FOR ANY PURPOSE OTHER THAN TO EVALUATE THIS DOCUMENT, WITHOUT THE PRIOR WRITTEN CONSENT OF ENTERA, LLC. TITLE IN AND TO THIS DOCUMENT AND ALL INFORMATION CONTAINED HEREIN REMAINS AT ALL TIMES PROPERTY OF ENTERA, LLC.

COLOR NOTES:

- #3630-84 Tangerine
- #3630-143 Poppy Red
- #3635-30 White Diffuser
- BK Silver

REVISION

1	XXXXX
2	XXXXX
3	XXXXX
4	XXXXX

ARTIST

MATT C

CUSTOMER

BURGER KING

SCALE

1" = 1'

DATE

02/14/25

LOCATION

VARIOUS

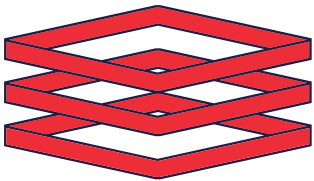
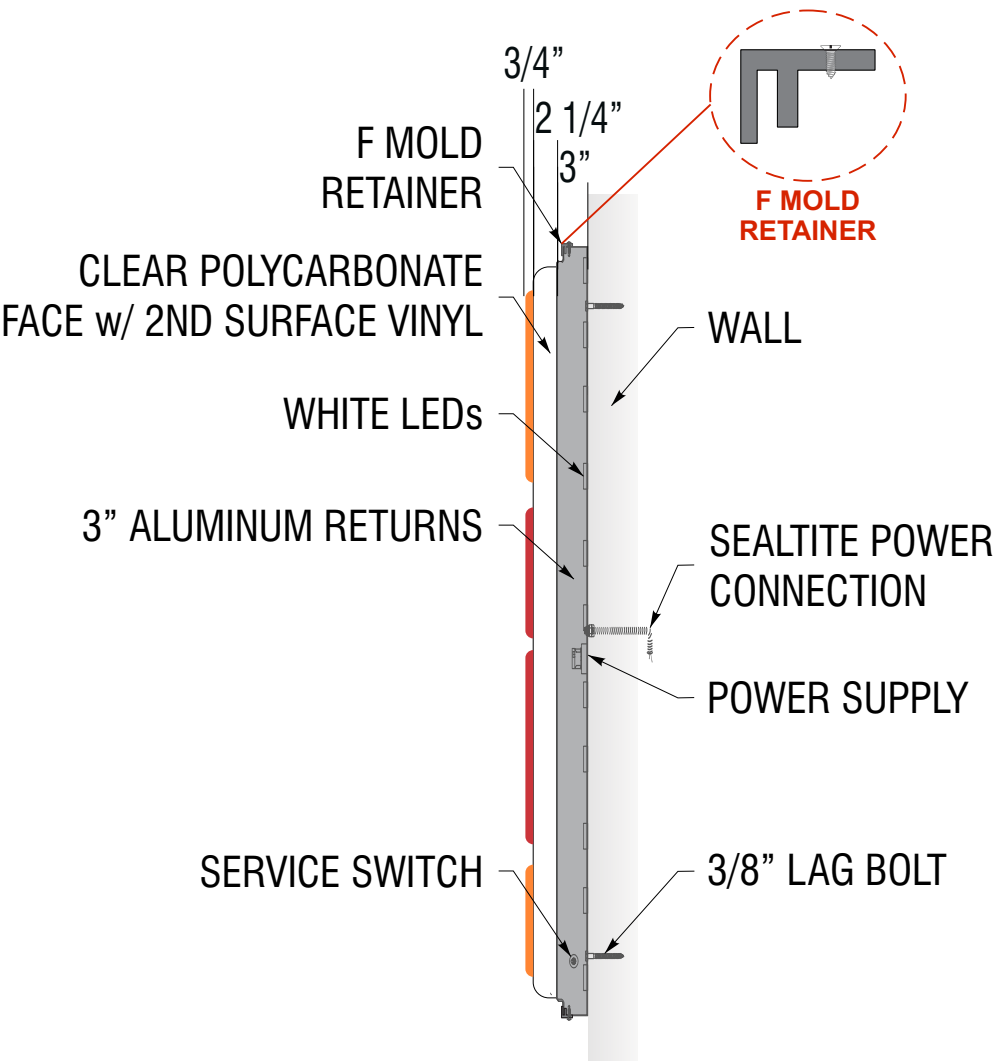


Underwriters
Laboratories, Inc.
LISTED

DEPARTMENT: ART



WALL SIGN: S/F LED ILLUMINATED CABINET WITH CLEAR SOLAR GRADE POLYCARBONATE VACUUM FORMED PANNED AND EMBOSSED FACES. 3M TRANSLUCENT VINYL APPLIED TO 2ND SURFACE WITH 3M #3635-30 WHITE DIFFUSER.



ENTERA

Your total branding solution

5900 VENTURE CROSSINGS BLVD
PANAMA CITY, FL 32409
PH: 850-763-7982
FAX: 850-392-0673
www.enterabranding.com

THIS DOCUMENT CONTAINS PROPRIETARY AND CONFIDENTIAL INFORMATION OF ENTERA, LLC, AND SHALL NOT BE USED, DISCLOSED OR REPRODUCED, IN WHOLE OR IN PART, FOR ANY PURPOSE OTHER THAN TO EVALUATE THIS DOCUMENT, WITHOUT THE PRIOR WRITTEN CONSENT OF ENTERA, LLC. TITLE IN AND TO THIS DOCUMENT AND ALL INFORMATION CONTAINED HEREIN REMAINS AT ALL TIMES PROPERTY OF ENTERA, LLC.

COLOR NOTES:

- #3630-84 Tangerine
- #3630-143 Poppy Red
- #3635-30 White Diffuser
- BK Silver

REVISION

1	XXXXX
2	XXXXX
3	XXXXX
4	XXXXX

ARTIST

MATT C

CUSTOMER

BURGER KING

SCALE

1" = 1'

DATE

02/14/25

LOCATION

VARIOUS



Underwriters
Laboratories, Inc.
LISTED

DEPARTMENT: ART



11" WHITE "BURGER KING" RACEWAY CHANNEL LETTERS



COLOR NOTES:

BACKS: 3mm WHITE ACM - PAINT BACKS SILVER
RETURNS: 3" .040" PREFINISHED SILVER (STAPLE & CAULK)
TRIM CAP: 1" PREFINISHED SILVER JEWELITE TO MATCH RETURNS
FACE: .150" WHITE POLYCARBONATE
RACEWAY: .063" ALUMINUM PAINTED BK SILVER
ILLUMINATION: 24V GE WHITE TETRA miniMAX LEDs

ELECTRICAL NOTE: ACTUAL NUMBER OF CIRCUITS TO BE DETERMINED BY A LICENSED ELECTRICAL CONTRACTOR.

TOTAL AMPS: 1.1

CIRCUITS: ONE (1) 20 AMP (RECOMMENDED)

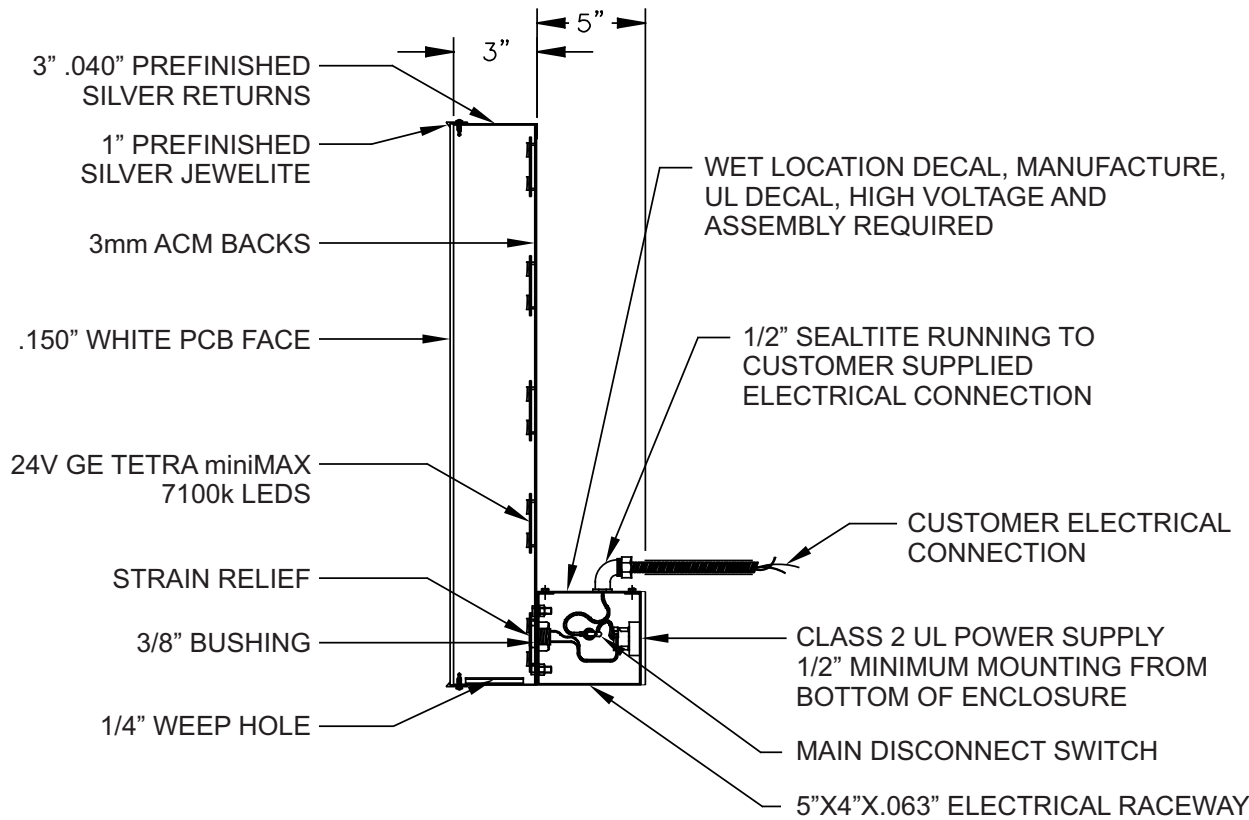
VOLTS: 120

ELECTRICAL CONNECTION AS FOLLOWS:

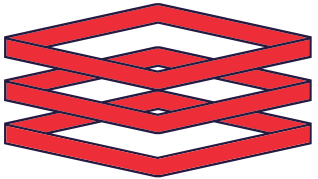
GREEN TO GREEN (GROUND), WHITE TO WHITE (NEUTRAL), BLACK TO BLACK (POWER)
THIS SIGN IS INTENDED TO BE INSTALLED IN ACCORDANCE WITH THE REQUIREMENTS OF ARTICLE 600 OF THE NEC 2017 CODE AND/OR OTHER APPLICABLE LOCAL CODES. THIS INCLUDES PROPER GROUNDING AND BONDING OF SIGN.

THE LOCATION OF DISCONNECT SWITCH AFTER INSTALLATION SHALL COMPLY WITH ARTICLE 600.6(A)(1) OF THE NEC 20017 CODE.

ALL SIGNAGE WILL BE UL LISTED, UL 2161 COMPLIANT, AND CARRY UL LABELS.



RACEWAY CHANNEL LETTTERS SECTION VIEW
NOT TO SCALE



ENTERA

Your total branding solution

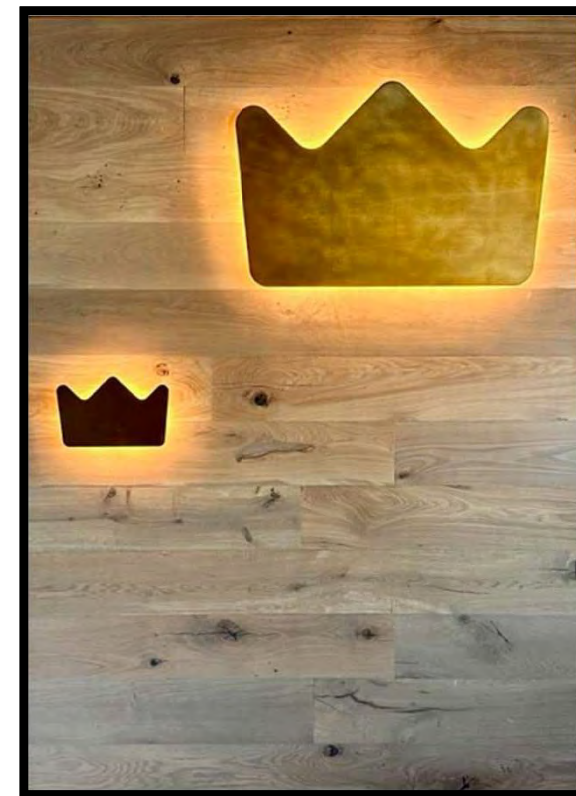
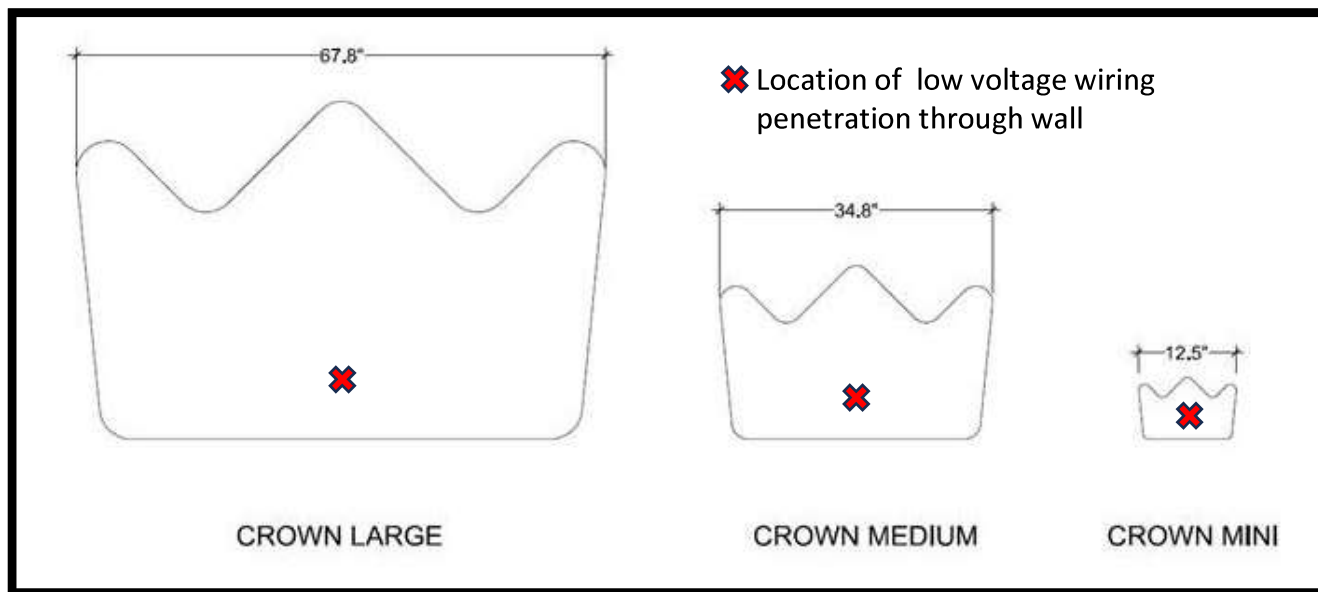
5900 VENTURE CROSSINGS BLVD
PANAMA CITY, FL 32409
PH: 850-763-7982
FAX: 850-392-0673
www.enterabranding.com

THIS DOCUMENT CONTAINS PROPRIETARY AND CONFIDENTIAL INFORMATION OF ENTERA, LLC, AND SHALL NOT BE USED, DISCLOSED OR REPRODUCED, IN WHOLE OR IN PART, FOR ANY PURPOSE OTHER THAN TO EVALUATE THIS DOCUMENT, WITHOUT THE PRIOR WRITTEN CONSENT OF ENTERA, LLC. TITLE IN AND TO THIS DOCUMENT AND ALL INFORMATION CONTAINED HEREIN REMAINS AT ALL TIMES PROPERTY OF ENTERA, LLC.

COLOR NOTES:

REVISION	
1	XXXXX
2	XXXXX
3	XXXXX
4	XXXXX
ARTIST	
MATT C.	
CUSTOMER	
BURGER KING	
SCALE	
3/4" = 1'	
DATE	
01/03/25	
LOCATION	
VARIOUS	

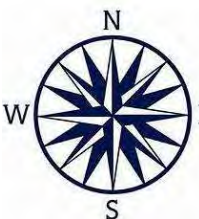




24V dotless LED tape
light pre-installed on
3/4" backer

Mounting instructions:

- 1) Locate placement of crowns on the restaurant wall according to décor plan. There are three sizes available, each with differing uses.
- 2) Locate wall mounting cleat positions – Mark spacing and level cleat
- 3) Install wall mounting cleat(s) to the wall with screws
- 4) Penetrate the wall to run the low voltage wiring from the LED strip pre-mounted to the location of the transformer. Note: this is often a location in or near the ceiling directly above. A pipe chase may be used if desired to run the wire up through the wall.
- 5) Apply liquid nail adhesive to the cleat and crown cleat opening. Hang the crown to the wall bracket and press to affix the adhesive.
- 6) Connect the low voltage wiring to the transformer and plug into or wire directly to the power supply.



NAUTICAL FURNISHINGS



NO.	REVISIONS
-----	-----------

DATE: 12/21/2024

SCALE: NA

**RENOVATIONS TO BURGER KING RESTAURANT
LOCATED AT 2037 S. BROAD STREET,
PHILADELPHIA, PENNSYLVANIA.**

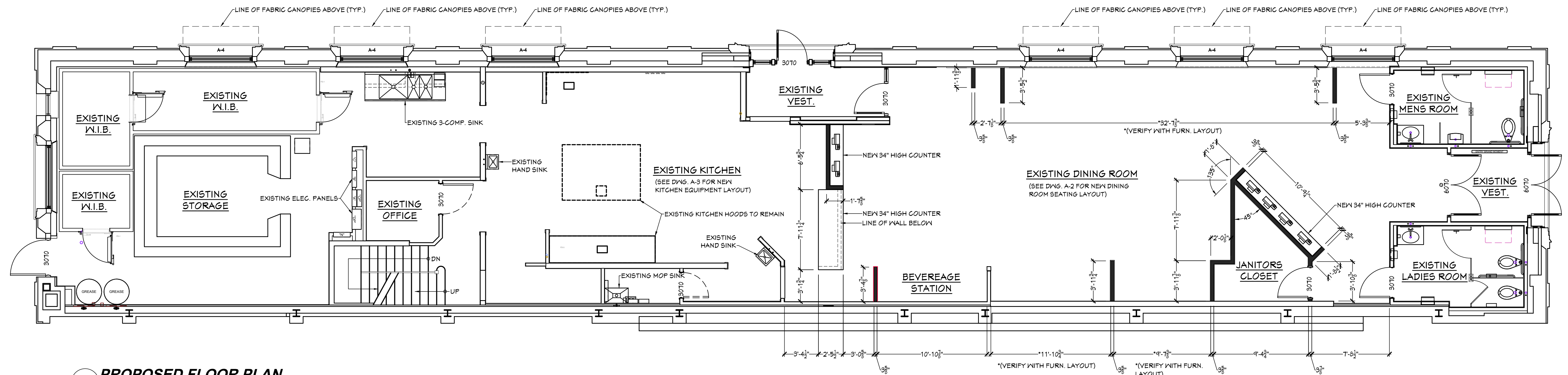
1000

**DRAWING
TITLE**

FLOOR PLANS



$$\Delta = 2$$

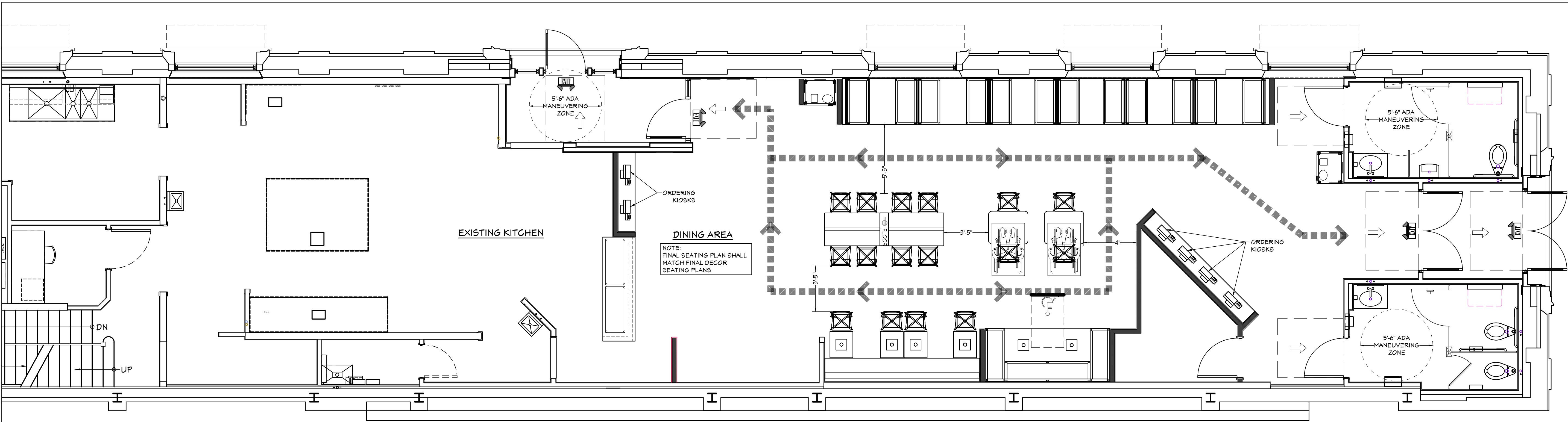
2 - OF - 4



1 PROPOSED FLOOR PLAN
SCALE: 3/16" = 1'-0"




WALL LEGEND:

	EXISTING WALLS TO REMAIN
	NEW 3½"X20 GA. METAL STUDS AT 16" OC WITH ½" GNB FINISH ON BOTH SIDES (FULL HEIGHT)



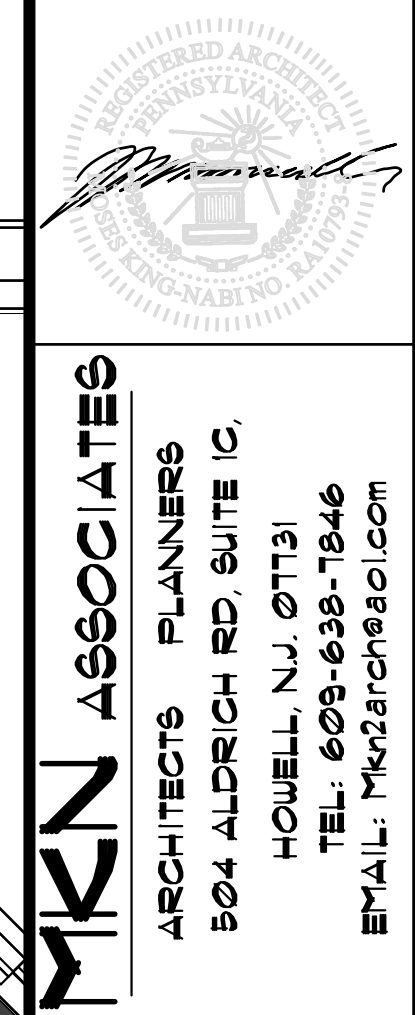
2 PROPOSED FLOOR SEATING PLAN
SCALE: 1/4" = 1'-0"

NOTE: ALL DIMENSIONS ARE APPROXIMATE (VERIFY IN FIELD)

WALL LEGEND:	
	- EGRESS PATH
	- A.D.A. COMPLIANT SEATING
	- EXISTING EMERGENCY LIGHT FIXTURE WITH 2-25 WATT HEADS AND EXIT SIGN WITH 6" RED LETTERS WITH BUILT IN BATTERY BACKUP AND CHARGER.

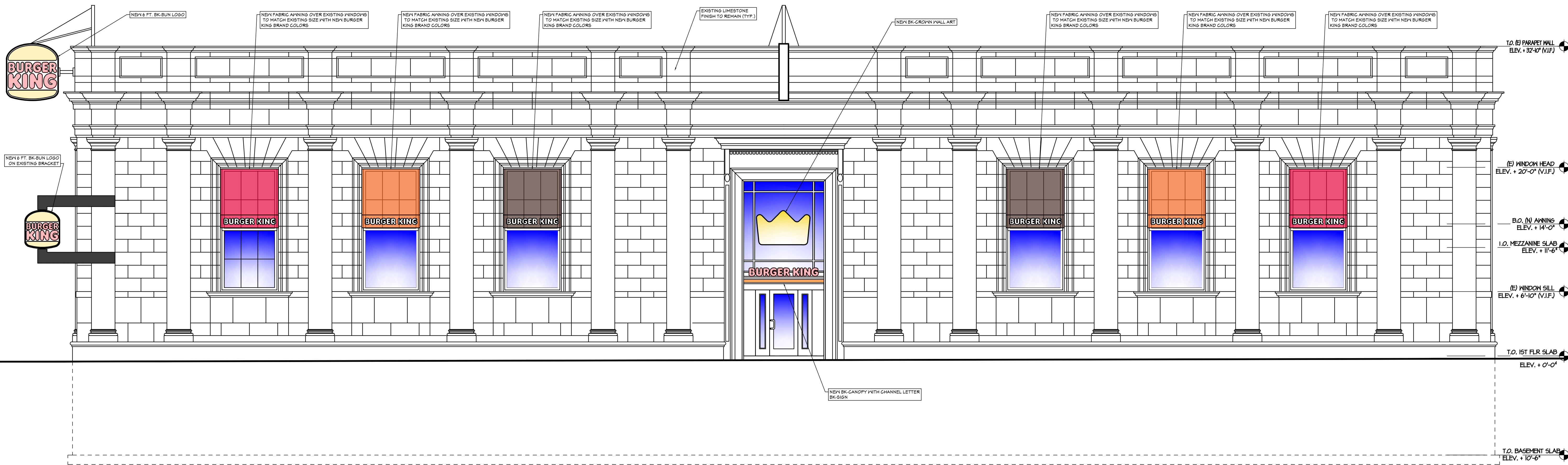
NOTES:

1. EXISTING CEILING TILES TO REMAIN. MODIFY AS REQUIRED TO SUIT NEW CONDITIONS.
2. EXISTING LIGHTS TO REMAIN. MODIFY LIGHTING IN DINING ROOM AS REQUIRED TO SUIT NEW CONDITIONS.
3. EXISTING HVAC DUCTWORK, REGISTERS AND DIFFUSERS TO REMAIN.
4. FOR DINING ROOM FINISHES SEE INTERIOR FINISH DRAWINGS BY OTHERS.

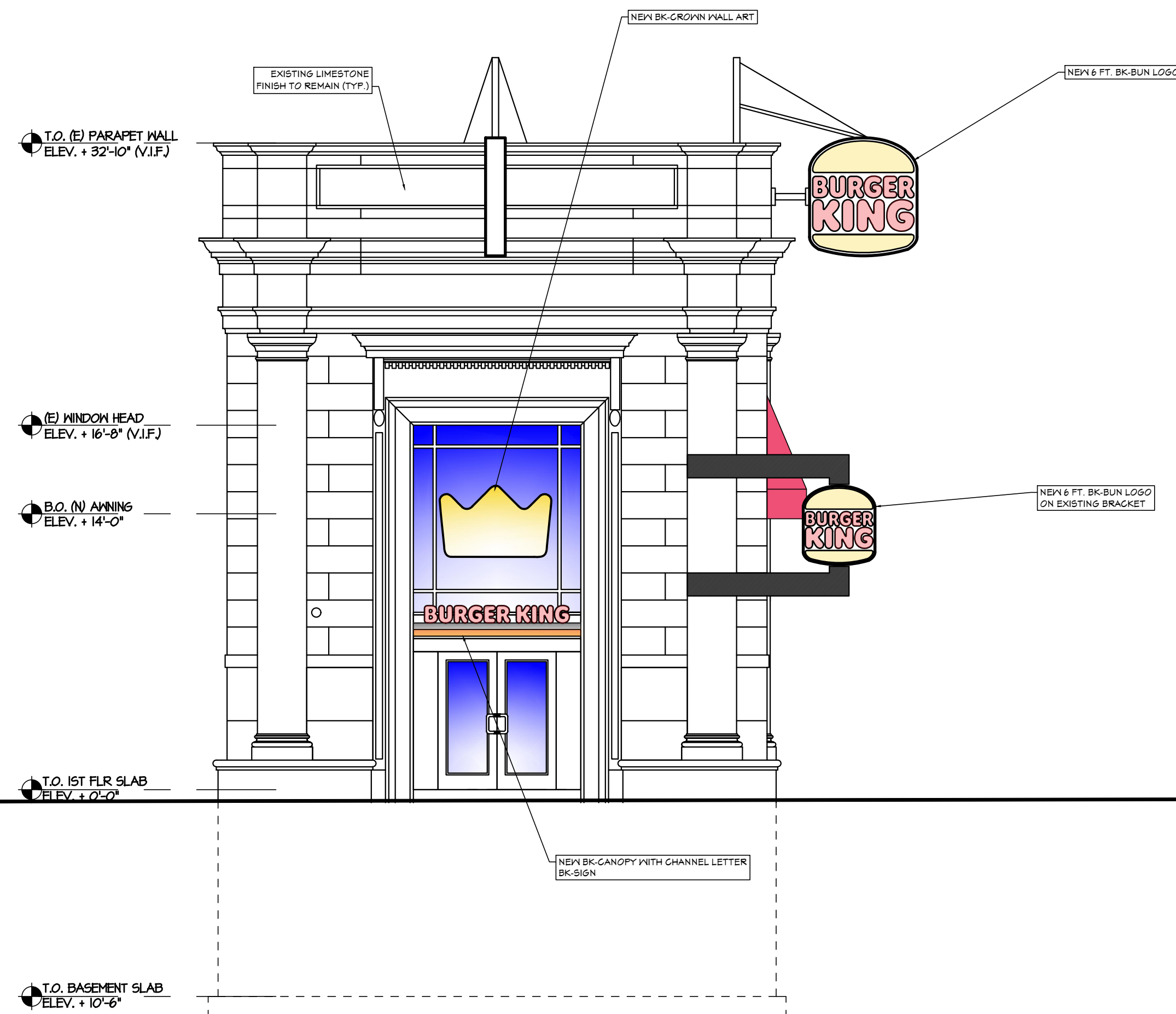


JOB NO. : 2024-035	
NO.	REVISIONS
DESIGN BY: ECO ARCHITECTS	
DATE:	12/21/2024
SCALE:	NA

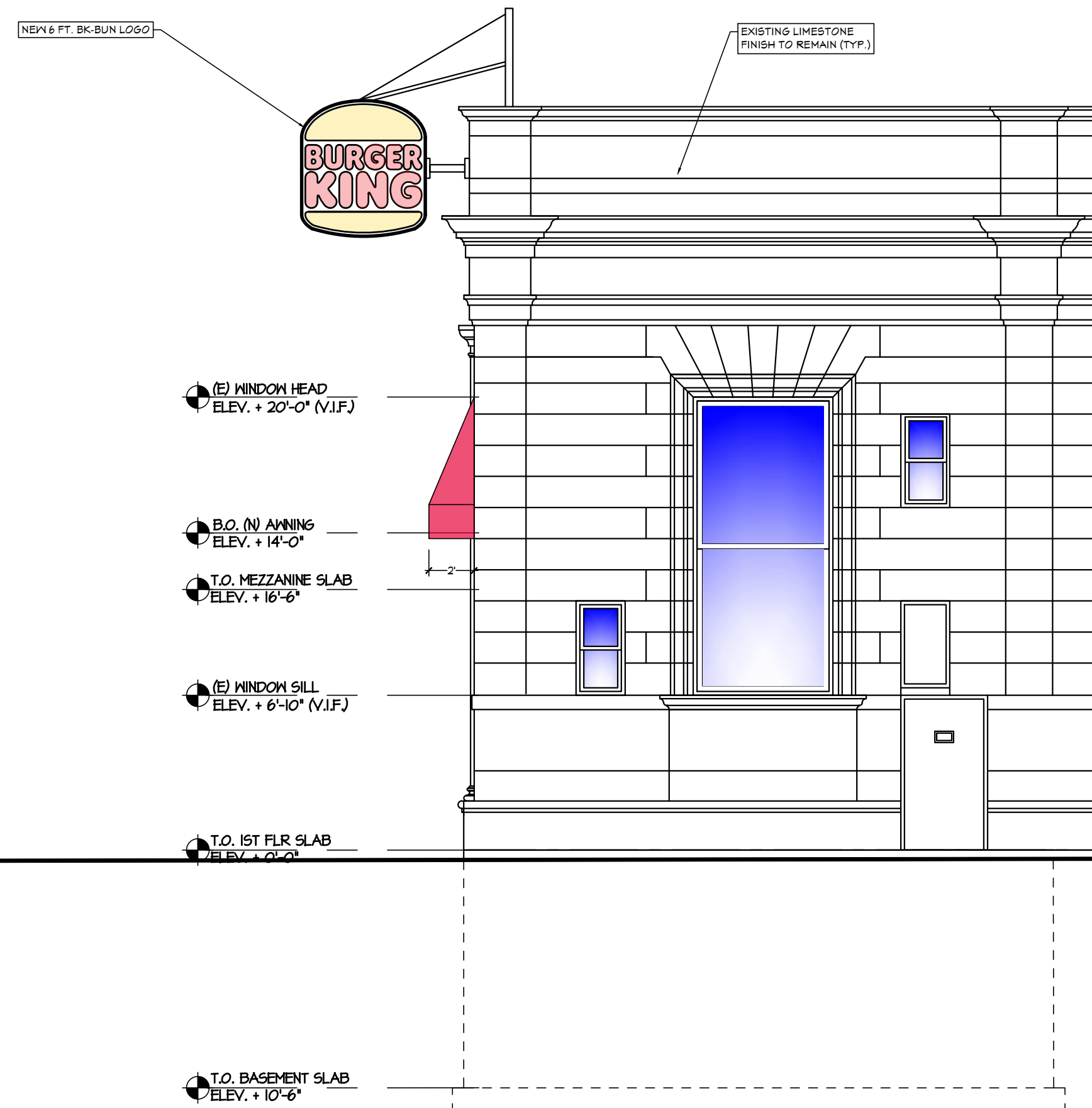
NOTE: ALL DIMENSIONS ARE APPROXIMATE (VERIFY IN FIELD)



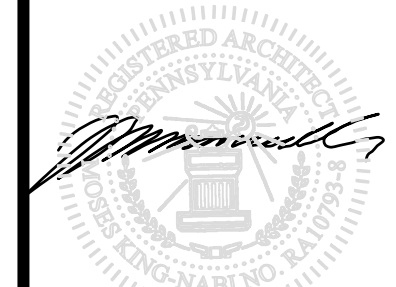
1 **EXTERIOR ELEVATION (SNYDER AVE)**
SCALE: 3/16" = 1'-0"



2 **EXTERIOR ELEVATION (BROAD STREET)**
SCALE: 3/16" = 1'-0"



3 **EXTERIOR ELEVATION (WATTS STREET)**
SCALE: 3/16" = 1'-0"



MKN ASSOCIATES
ARCHITECTS PLANNERS
504 ALDRICH RD, SUITE 10,
HOWELL, N.J. 07731
TEL: 609-638-7846
EMAIL: mknarch@aol.com

JOB NO.: 2024-035
NO. REVISIONS
DESIGN BY: ECO ARCHITECTS
DATE: 12/21/2024
SCALE: 3/16" = 1'-0"

PROJECT:

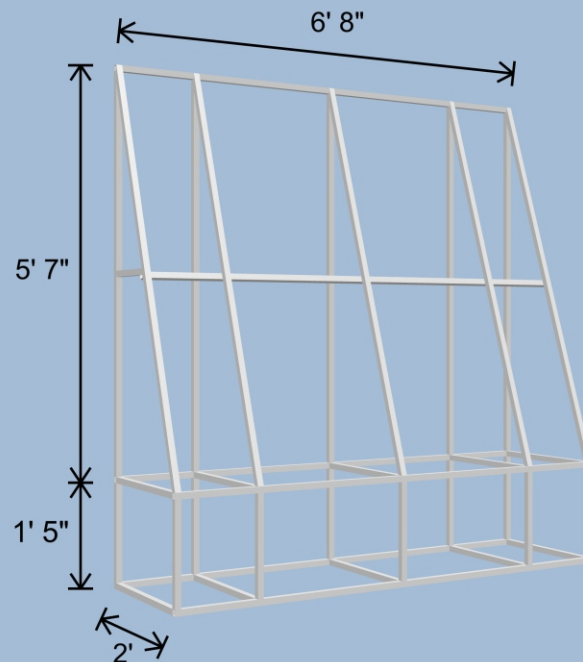
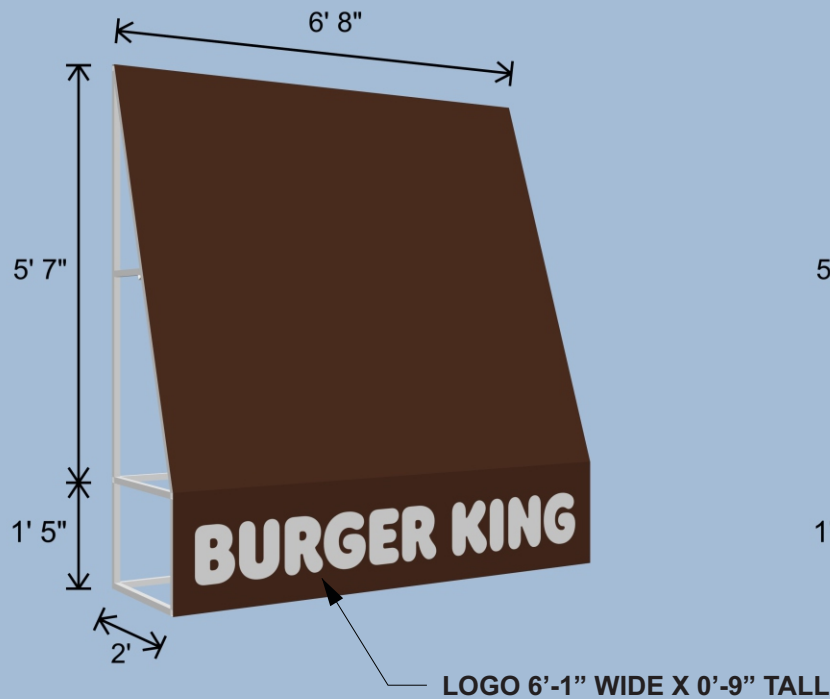
RENOVATIONS TO BURGER KING RESTAURANT
LOCATED AT 2031 S. BROAD STREET,
PHILADELPHIA, PENNSYLVANIA.

DRAWING
TITLE

ELEVATIONS

A = 4

(6) AWNINGS, ALL THE SAME SIZE



FRAMEWORK TO MATCH FABRIC COLORS.

NOTES:

FRAMEWORK & FRAME COMPONENTS

1. Metal to be 6063-T5 aluminum "Staple-In" extrusions, by Steel Stitch (or equivalent).
 - A. Aluminum framing profiles shall be sized to withstand all live loads, dead loads, super-imposed loads and transportation loads. Frame design shall also be subject to regional code restrictions.
 - B. Fasteners shall be non-corrosive, and non-staining. This includes all anchors, bolts, shims and accessory items.

FRAME

- a. All framing members are to be joined by welding.
- B. Each member is to be cut to an appropriate miter that provides a tight, clean fit.
- C. Junctions are to receive no less than three welds per member. 4043 aluminum welding rod is to be used to create all welds. TIG (Tungsten Inert Gas) welding equipment is to be used to provide a clean weld.
- D. Welds that interface with fabric panels are to be ground smooth and de-burred so that no sharp edges come into contact with the fabric.
- E. Finished frame modules shall be sized so that they can be transported in accordance with all national & regional transportation regulations.

ALL MEASUREMENTS TO BE V.I.F.

DESIGN CRITERIA

WIND LOADS

ALL AWNING/CANOPY FRAMES ARE DESIGNED IN ACCORDANCE WITH SECTION 1609.0 OF THE INTERNATIONAL BUILDING CODE/2015 TO RESIST 135 MPH PRESSURES CAUSED WIND IN ANY DIRECTION.

SNOW LOADS

ALL AWNING/CANOPY FRAMES ARE DESIGNED IN ACCORDANCE WITH SECTION 1608.0 OF THE INTERNATIONAL BUILDING CODE/2015 TO WITHSTAND 35 LBS/SQ FT. SNOW LOAD.

LIVE LOADS

ALL AWNING/CANOPY FRAMES ARE DESIGNED IN ACCORDANCE WITH SECTION 1607.0 OF THE INTERNATIONAL BUILDING CODE/2015 TO WITHSTAND 35 LBS/SQ FT. LIVE LOAD.

DSM ENTERPRISES INC.
132B Lewis St. Unit B5 Eatontown, NJ 07724
BURGER KING #36779
2037 S. BROAD ST. PHILADELPHIA, PA 19148
DATE: 05/12/2025
DRAWING #BK-1

2037 S BROAD ST

PHILADELPHIA, PA 19148-5505

Property Assessments

Property assessment and sale information for this address. Source: Office of Property Assessments (OPA). OPA was formerly a part of the Bureau of Revision of Taxes (BRT) and some City records may still use that name.

OPA Account #	882963205
OPA Address	2037 S BROAD ST
Owners	2037 PHILADELPHIA LLC
Assessed Value	\$1,520,800
Sale Date	03/20/2025
Sale Price	\$1,650,000

See more at [Property Search](#)

Deeds

Licenses & Inspections

Zoning

Voting



Feedback