

1702 Walnut Street Abercrombie & Fitch

Installation of Two New Exterior Signs



Project Cover Letter

Rachel (Rei) Mariman
Permit Philly LLC
License No: 063469
docs@permitphilly.com
267.744.4200

May 8, 2025

Philadelphia Art Commission
1515 Arch St., 13th Floor
Philadelphia, PA 19102

RE: Signage for New Abercrombie & Fitch located at 1702 Walnut Street

To the Sign Committee of the Art Commission:

Please find attached drawings, photos of the existing site conditions, and a rendering in application for two exterior signs (non-illuminated plaque) for a new Abercrombie & Fitch at 1702 Walnut Street, Philadelphia, PA 19103. Lettering for both signs will read, "Abercrombie & Fitch 1702 Walnut St."

The proposed signage consists of:

- **Non-Illuminated Plaque Signs (F in attached drawings)** on either side of the front door. The signs will be:
 - 2'x2' for a total of 4 sq ft of sign area for each of the two signs
 - Aluminum with a chemcast panel face and routed acrylic lettering and painted SW Tricorn Black with a matte finish
 - Mounted such that the bottom edge is aligned to a height of 4' above grade
 - Mounted flush to the storefront wall with riv nuts and all thread fastened with silicone.

Please note that exterior signs A & B depicted on the application materials were previously reviewed and approved by the Art Commission.

The Commission's Decision and all communication should come to me, Rei Mariman, at the email and phone number above.

Thank you,

Rachel (Rei) Mariman

Rachel (Rei) Mariman
Permit Coordinator, Permit Philly LLC



Facade



View
Right



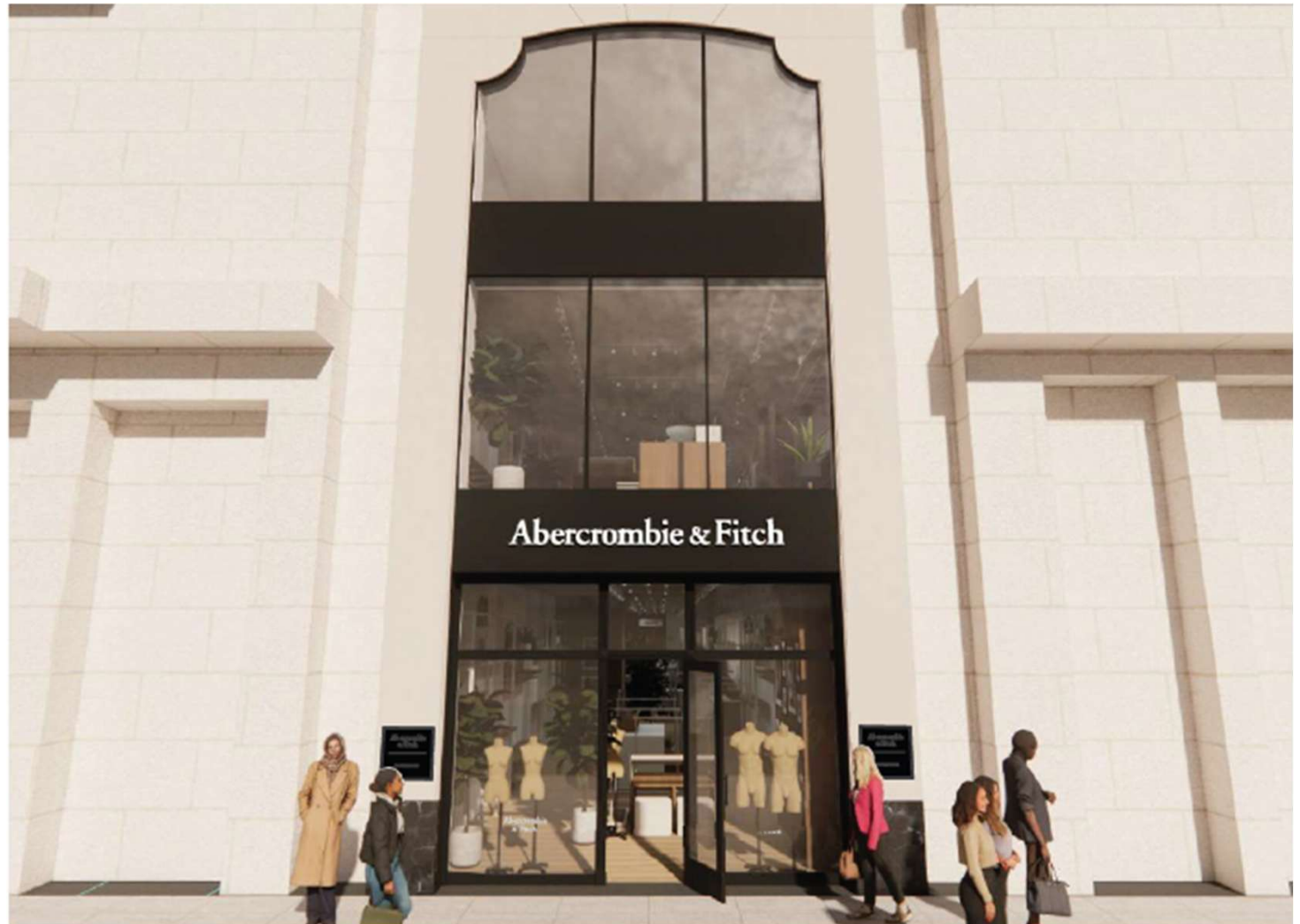
View Left



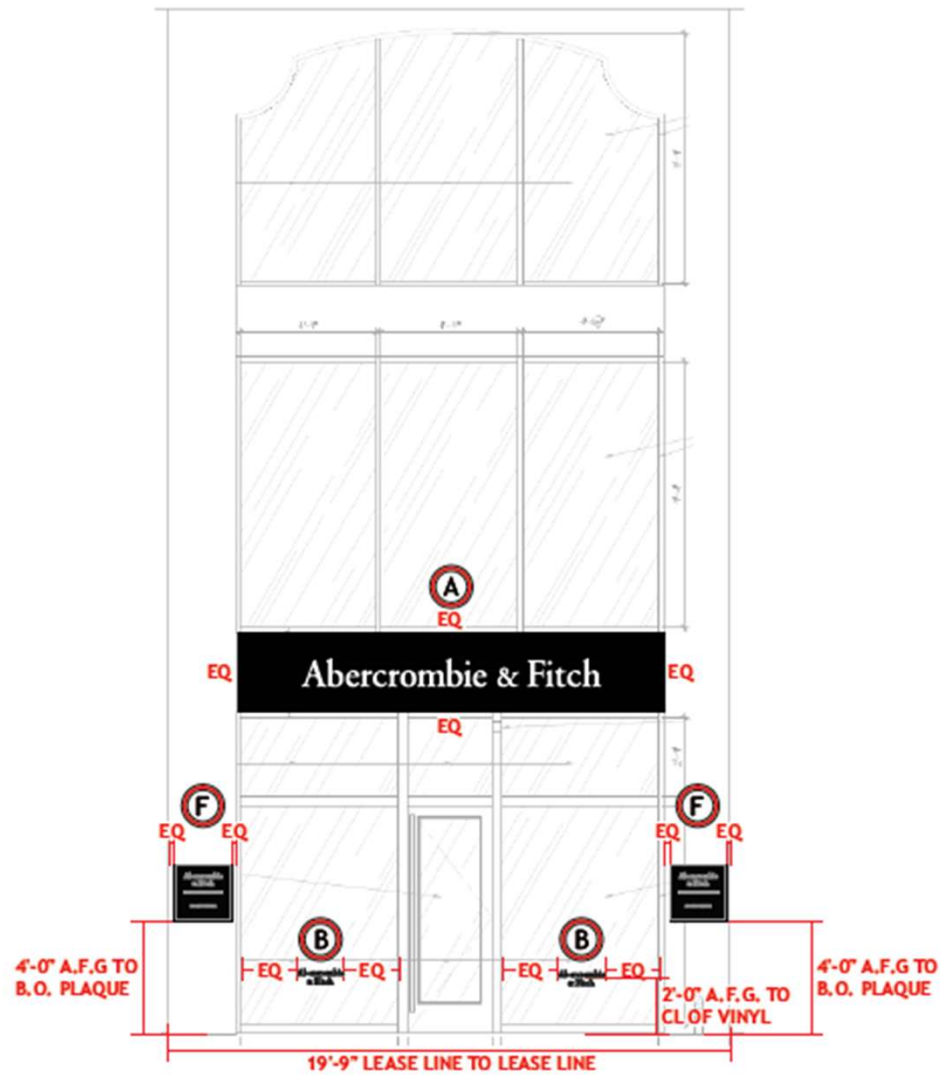
Across
the Street



Proposed Front Elevation Rendering

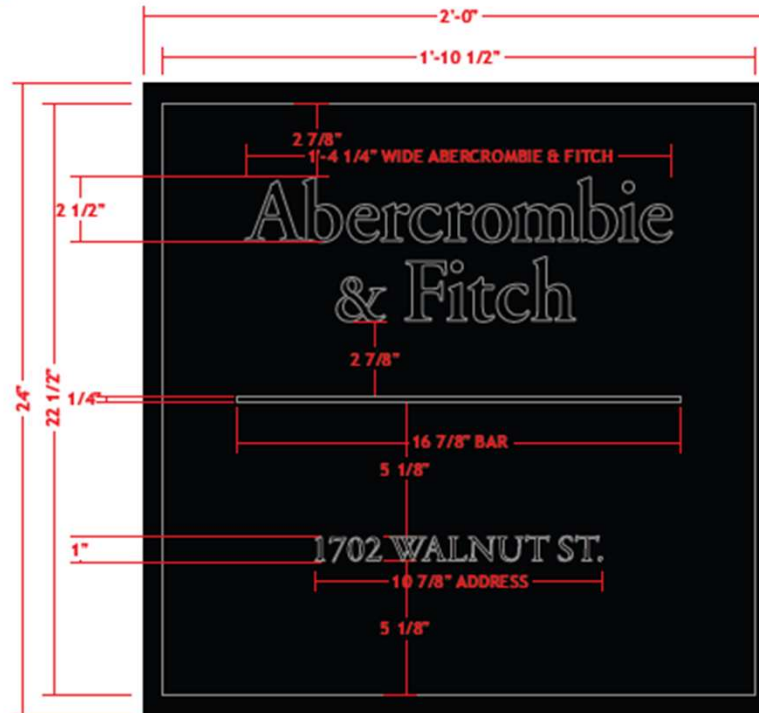


Proposed Front Elevation Detail



Sign F Detail

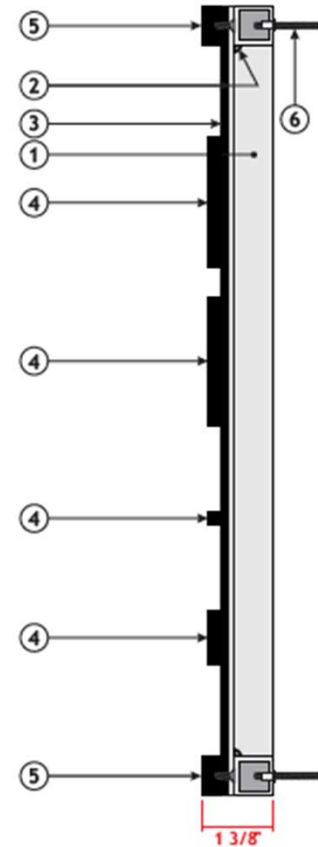
F NON-ILLUM. PLAQUE - ELEVATION QTY: 2
Scale: 3" = 1' - 0"



SIGN - DETAILS

- ① 3/4" X 3/4" ALUMINUM TUBE FRAME, PAINTED SW TRICORN BLACK, MATTE FINISH.
- ② 1/8" THICK ALUMINUM PANEL WELDED TO ALUMINUM FRAME, PAINTED SW TRICORN BLACK, MATTE FINISH.
- ③ 1/8" THICK CHEMCAST PANEL MOUNTED TO FACE OF ALUMINUM PANEL WITH ADHESIVE, PAINTED SW TRICORN BLACK, MATTE FINISH.
- ④ 1/4" THICK ROUTED ACRYLIC LETTERS PAINTED SW TRICORN BLACK, MATTE FINISH. MOUNTED TO CHEMCAST PANEL WITH DOUBLE SIDED TAPE AND SILICONE.
- ⑤ 3/8" THICK ROUTED ACRYLIC BORDER PAINTED SW TRICORN BLACK, MATTE FINISH. MOUNTED TO ALUMINUM PANEL AND FRAME WITH SCREW THROUGH THE BACK.
- ⑥ PLAQUE SIGN MOUNTS FLUSH TO STOREFRONT WALL WITH RV NUTS AND ALL THREAD THAT IS FASTENED WITH SILICONE.

NON-ILLUM. PLAQUE - SECTION
Scale: 1" = 0' - 2"



AF2.5FCO 2L PL24FAB faux PLQ