

May 5, 2025

Alex Smith
The Philadelphia Art Commission
One Parkway, 1515 Arch Street, 13th Floor
Philadelphia, PA 19102



Re: Letter of Intent for Percent for Art at Hillside Pool Replacement

Dear Alex:

Creative Philadelphia would like to inform the Philadelphia Art Commission of our intent to administer Percent for Art funds triggered by the Hillside Pool Replacement project, located at 201 Fountain Street in the Roxborough section of Northwest Philadelphia. Estimated at \$2.8 million, the capital project consists of a new pool and pool deck, with advanced piping and drainage systems for improved functionality and efficiency, as well as a new pool house for improved equipment storage, operations and maintenance.

The timeline and scope for the administration of Percent for Art funds is still being determined in collaboration with Creative Philadelphia, Capital Program Office (CPO) and Philadelphia Parks and Recreation (PPR). Given the limited size of the capital project, the Percent for Art funds representing 1% of the total project budget may be pooled with another future Percent for Art project in the same District, in keeping with the City's Percent for Art guidelines, or another allowable strategy may be utilized to maximize the impact of public art dollars in this District.

Once the plan for the administration of art funds is further developed, Creative Philadelphia will initiate a separate review process with the Philadelphia Art Commission for approval.

We look forward to working with Capital Programs Office, Parks and Recreation and all stakeholders to administer these public art funds on behalf of the community, while enhancing the City's renowned collection of public art. Should you require any additional information please do not hesitate to call me at 215.686.4596.

Sincerely,

A handwritten signature in black ink, appearing to read 'Marguerite Anglin'.

Marguerite Anglin, RA, NOMA
Public Art Director
Creative Philadelphia
City of Philadelphia

Memorandum



To: Alex Smith, Director Art Commission
From: Rana Eldidi, Architectural Project Coordinator
Date: March, 31st 2025
Re: Request for **Administrative Approval**

We respectfully request administrative approval for the **Hillside Pool Replacement** project at Hillside Recreation Center. This is a PPR site is located at 201 Fountain St, Philadelphia, PA 19128.

The enclosed description and graphics show the intended extent of work.

This project involves the demolition of the existing pool, pool deck, and associated pool drainage systems, followed by the construction of a new, competition-sized pool at the Hillside Recreation Center. The current pool has not been used for years due to significant piping issues that have rendered it inoperable. The new pool will replace the outdated facility and be built to modern standards, incorporating advanced piping and drainage systems for improved functionality and efficiency. The project is estimated at \$2,800,000 and the design consultant is Transystems.

Key components of the project include:

- **Demolition of Existing Pool/Pool Deck & Drainage:** The project will begin with the demolition of the current, unused pool structure, including the deck and related piping and drainage systems. These outdated systems are a primary reason the pool has been out of service, and their removal will allow for the construction of a more reliable and sustainable pool.
- **New Competition-Sized Pool:** A new, competition-sized pool will be constructed to meet all necessary regulations and standards. The pool will be designed for both recreational and competitive use, providing a state-of-the-art aquatic facility for the community.
- **Updated Piping & Drainage Systems:** The new pool will feature a stainless-steel gutter and upgraded, more efficient piping and drainage systems to enhance performance, water circulation, and overall maintenance. These systems will address past issues, ensuring the pool operates efficiently and reliably moving forward.
- **ADA Accessibility:** The pool will be made fully ADA accessible with the installation of a wheelchair lift, ensuring equal access for all individuals to the facility.
- **Demolition of Existing Pool Equipment Vault:** The existing pool equipment vault and all associated fixtures and elements shall be removed to prepare for the construction of a new pool equipment house.
- **New Pool House:** A new pool house will be constructed to store all of the new pool equipment, providing a functional space for operations and maintenance. The pool house will be designed with modern amenities and storage solutions for easy access to equipment and supplies.

Thank you for your attention. Please inform me directly if we require a formal Art Commission presentation for this project.

cc: Aparna Palantino, Capital Projects Director, CPO
Francesco Cerrai, Project Director
Rana Eldidi, Project Coordinator



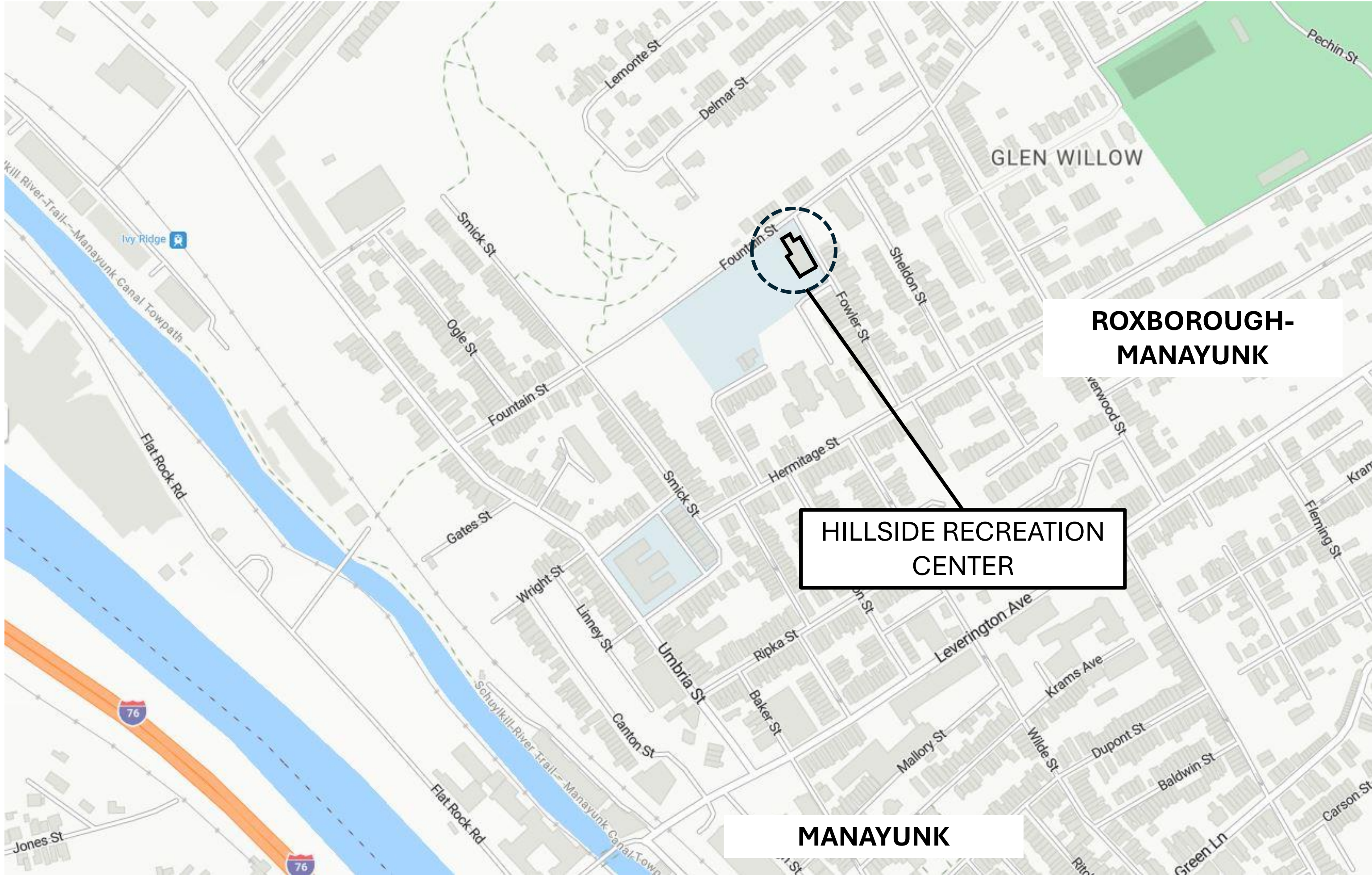
HILLSIDE RECREATION CENTER – POOL REPLACEMENT

CITY OF PHILADELPHIA

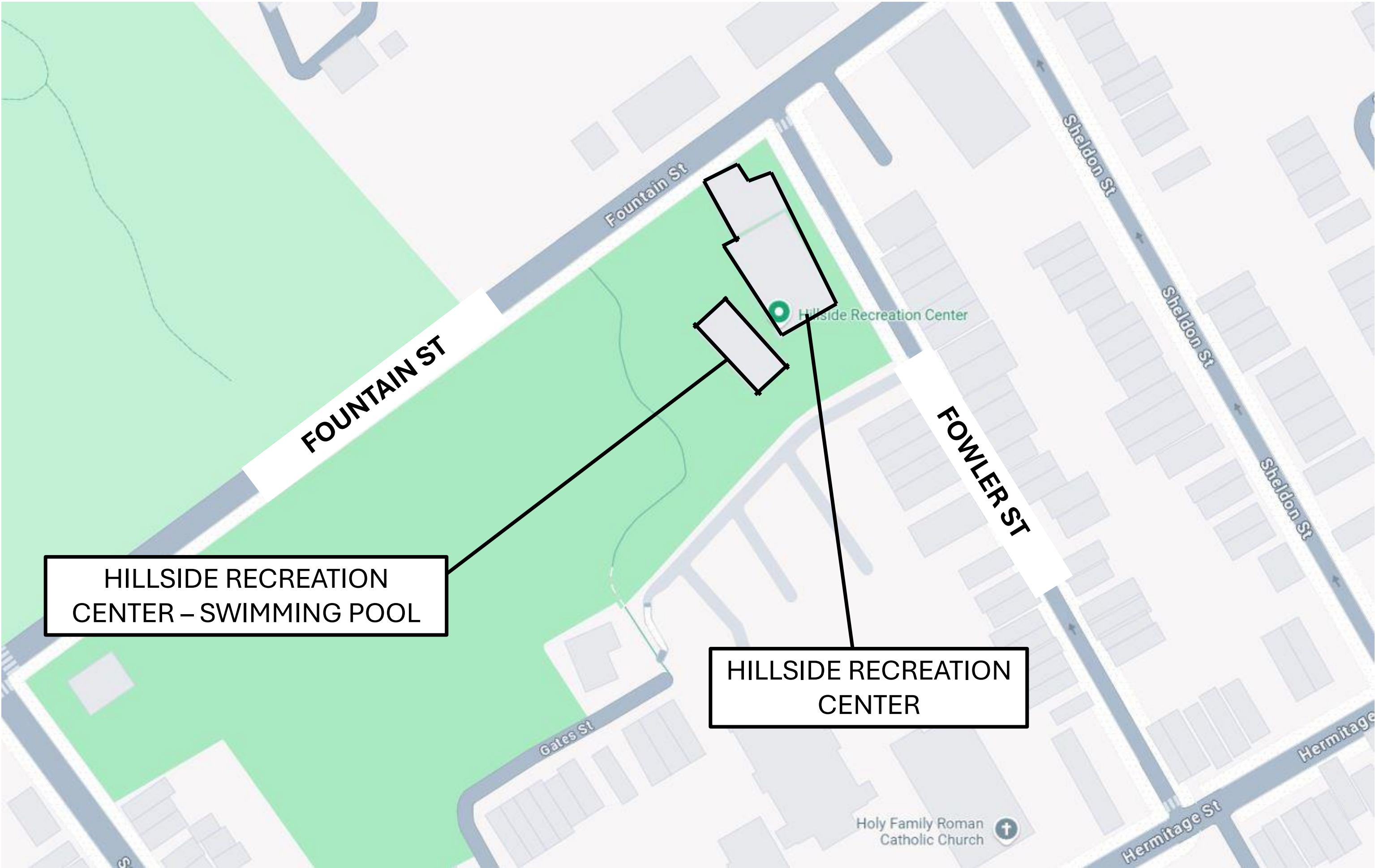
ART COMMISSION SUBMISSION
05/14/25

TRANSSYSTEMS

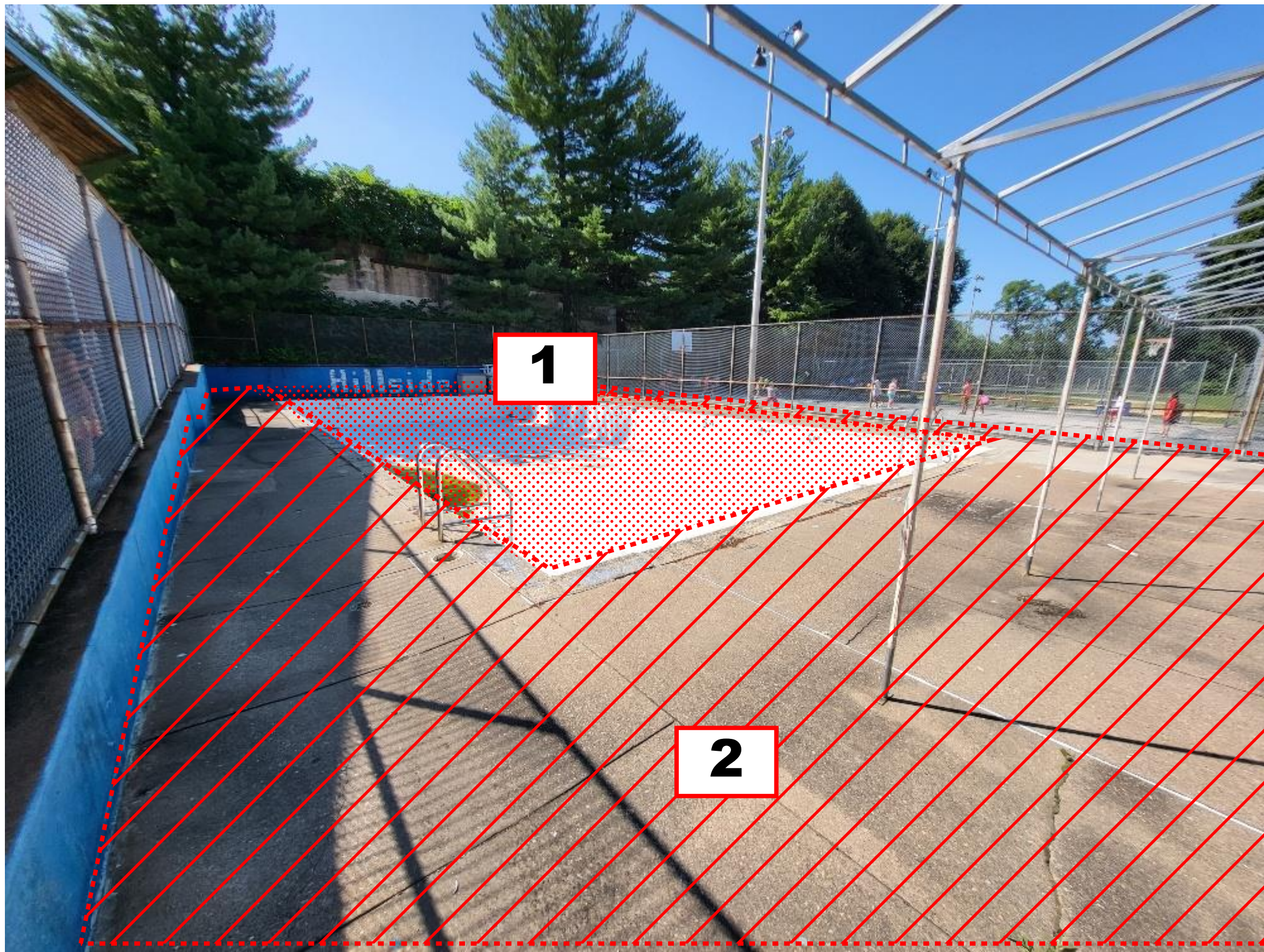
Weston & SampsonSM



SITE LOCATION PLAN - NTS



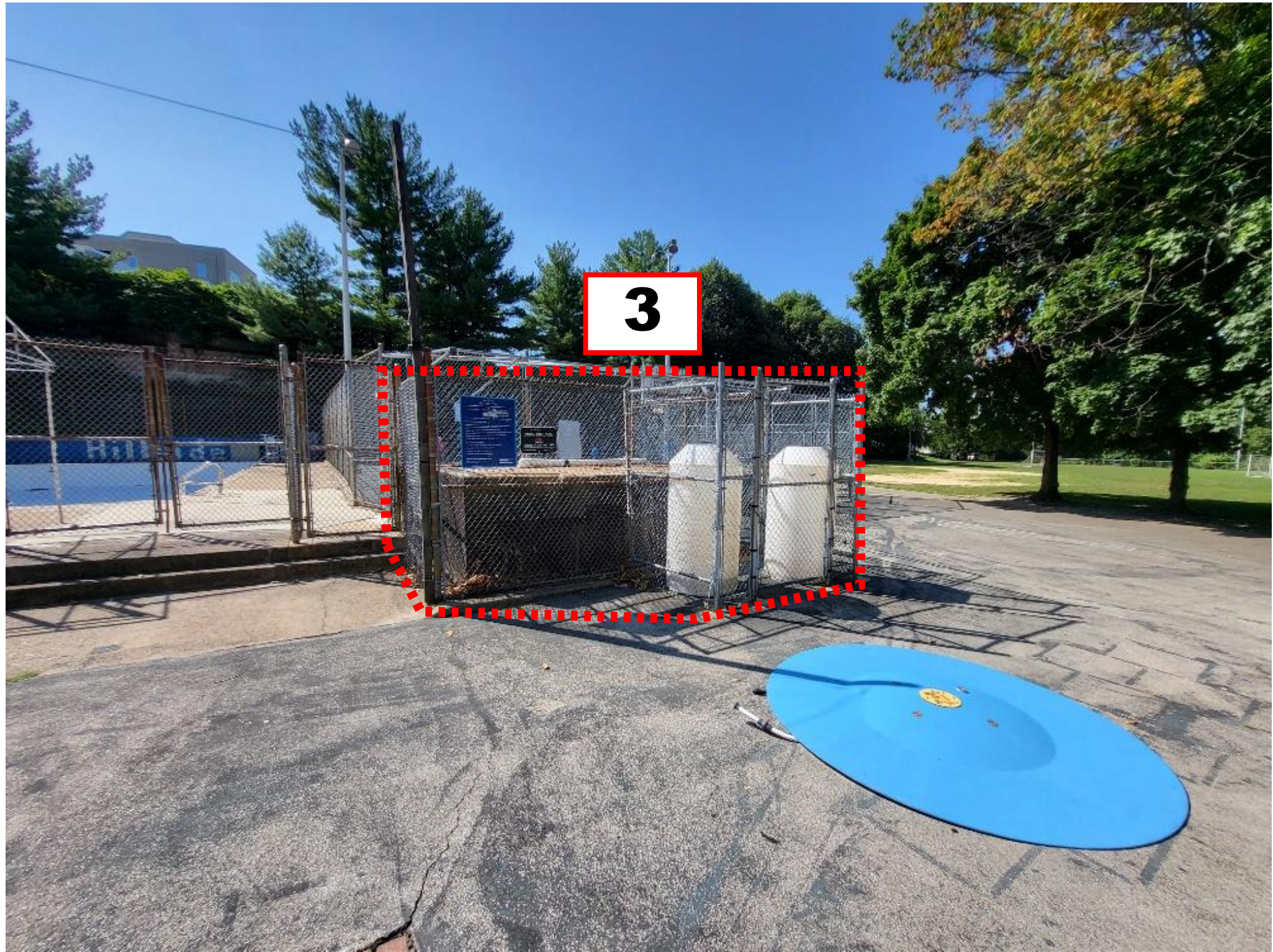
STREET PLAN - NTS



POOL & POOL DECK NOTES:

- 1. NEW IN-GROUND SWIMMING POOL TO BE INSTALLED.
- 2. EXISTING POOL DECK TO BE DEMOLISHED AND REPLACED WITH NEW.

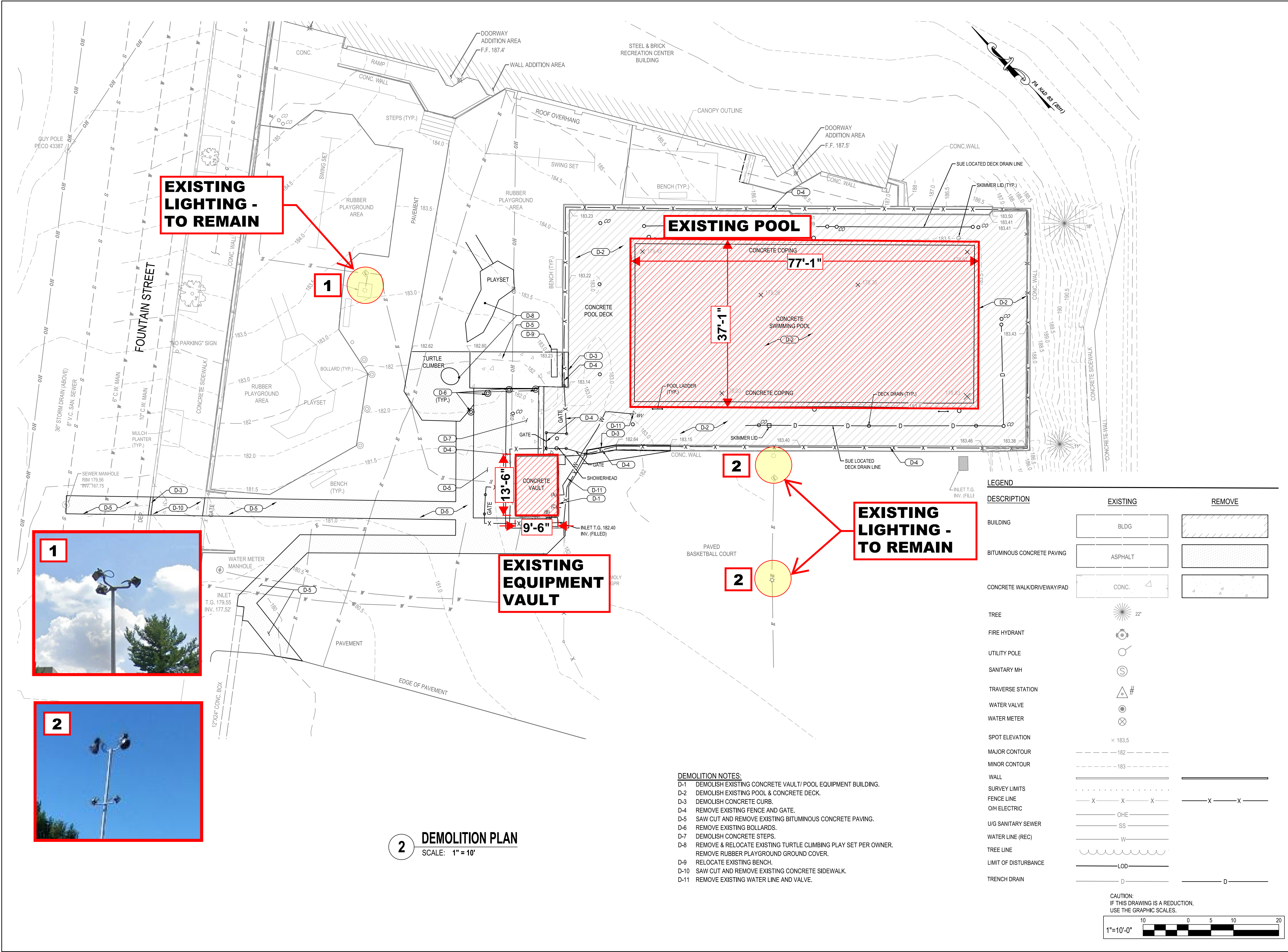
POOL & POOL DECK





POOL EQUIPMENT VAULT NOTES:

- 3. EXISTING POOL EQUIPMENT VAULT AND ALL ASSOCIATED FIXTURES/ELEMENTS TO BE DEMOLISHED FOR CONSTRUCTION OF NEW POOL EQUIPMENT HOUSE.

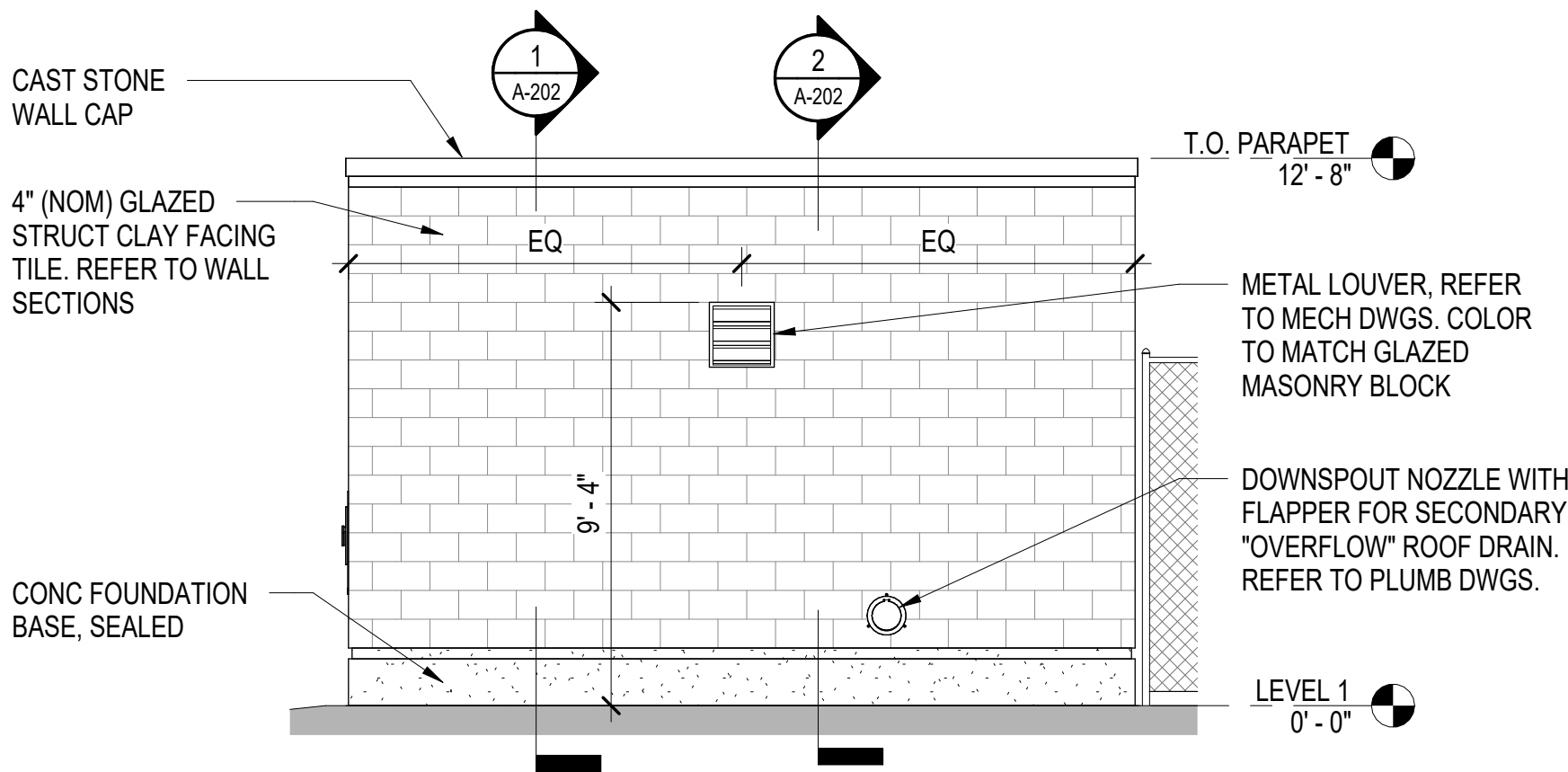
POOL EQUIPMENT VAULT



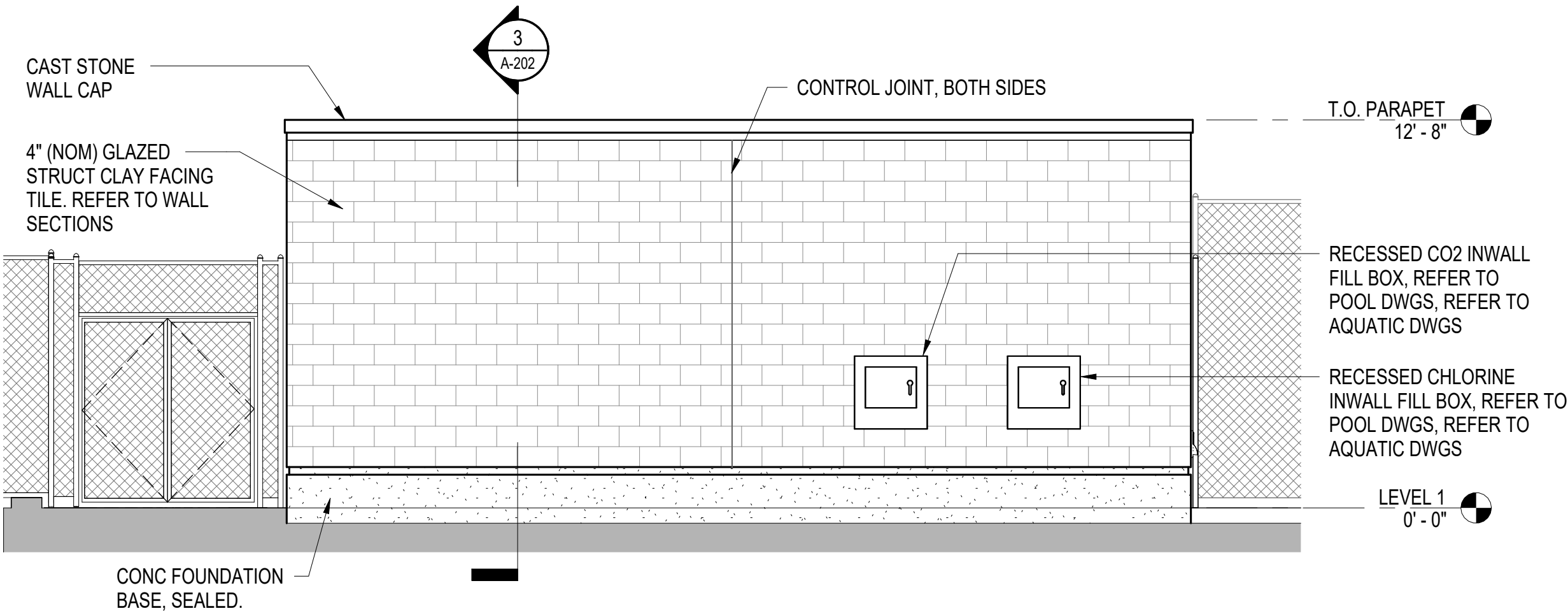
REVISIONS		
ISSUE	DATE	REVISIONS
<div><p>1515 ARCH STREET PHILADELPHIA, PA 19102 11TH FLOOR, ONE PARKWAY BUILDING</p></div>		
PROJECT DIRECTOR FRANCESCO CERRAI		
PROJECT COORDINATOR		
SEALS		
CONSULTANT <div><p>TRANSYSTEMS 300 EAST JOPPA ROAD, SUITE 200 BALTIMORE, MD 21286</p></div>		
CITY OF PHILADELPHIA CAPITAL PROGRAM OFFICE 1515 ARCH STREET 11TH FLOOR, ONE PARKWAY BUILDING PHILADELPHIA, PENNSYLVANIA		
PROJECT TITLE HILLSIDE RECREATION CENTER IMPROVEMENTS 201 FOUNTAIN STREET, PHILADELPHIA, PA 19128		
DRAWING TITLE DEMOLITION PLAN		
PROJECT NO. 16-20-4604-99		DRAWING NO. CD101
DATE 3/14/2024		FILE
SCALE AS NOTED		
DRAWN BY ES		
CHECKED BY RH		
NOTE: ALL DIMENSIONS AND CONDITIONS SHALL BE VERIFIED BY THE CONTRACTOR AT THE SITE BEFORE PROCEEDING WITH THE WORK.		

SHEET NOTES - ELEVATIONS

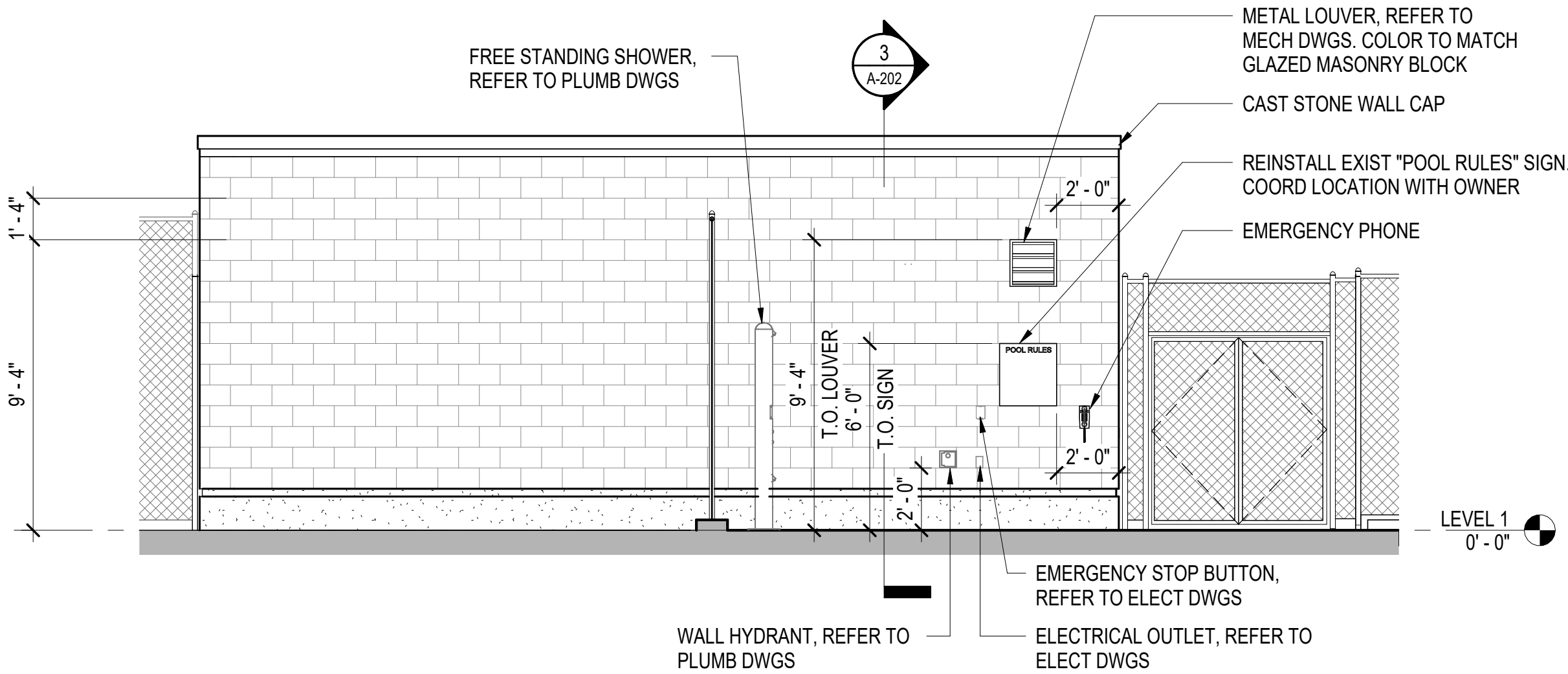
1. REFER TO THE 'AQ' POOL DRAWINGS FOR LOCATION OF INWALL FILL BOXES. MOUNTING HEIGHT AND LOCATION SHALL BE COORDINATED WITH POOL EQUIPMENT AND PER MANUFACTURE'S RECOMMENDATIONS.
2. REFER TO ELECTRICAL DWGS FOR WALL MOUNTED EMERGENCY TELEPHONE, EMERGENCY SHUT-OFF BUTTON, AND WALL MOUNTED ELECTRICAL OUTLETS.
3. PROVIDE GLAZED BLOCK WITH FINISHED ENDS AT BUILDING CORNERS, (DOOR & LOUVER) JAMBS, HEADERS, AND SILLS.
4. HEIGHT OF NEW FENCE IS TO MATCH EXISTING FENCE HIEGHT. REFER TO CIVIL DWGS



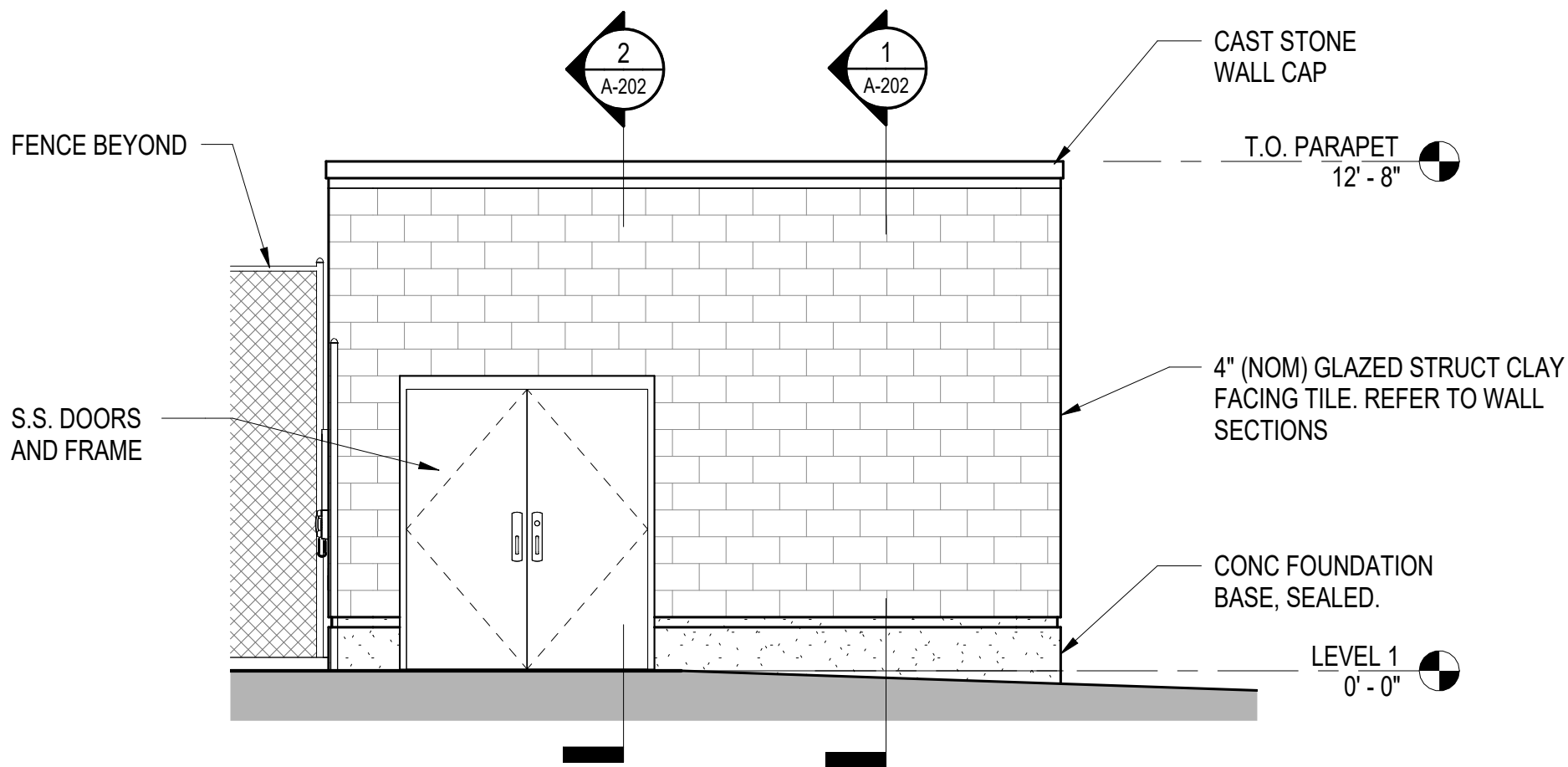
4 BUILDING ELEVATION - SOUTH
SCALE: 1/4" = 1'-0"



3 BUILDING ELEVATION - WEST
SCALE: 1/4" = 1'-0"

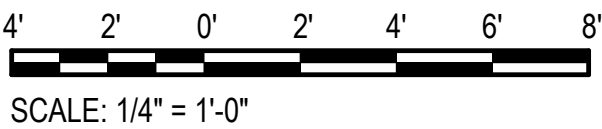



2 BUILDING ELEVATION - EAST
SCALE: 1/4" = 1'-0"

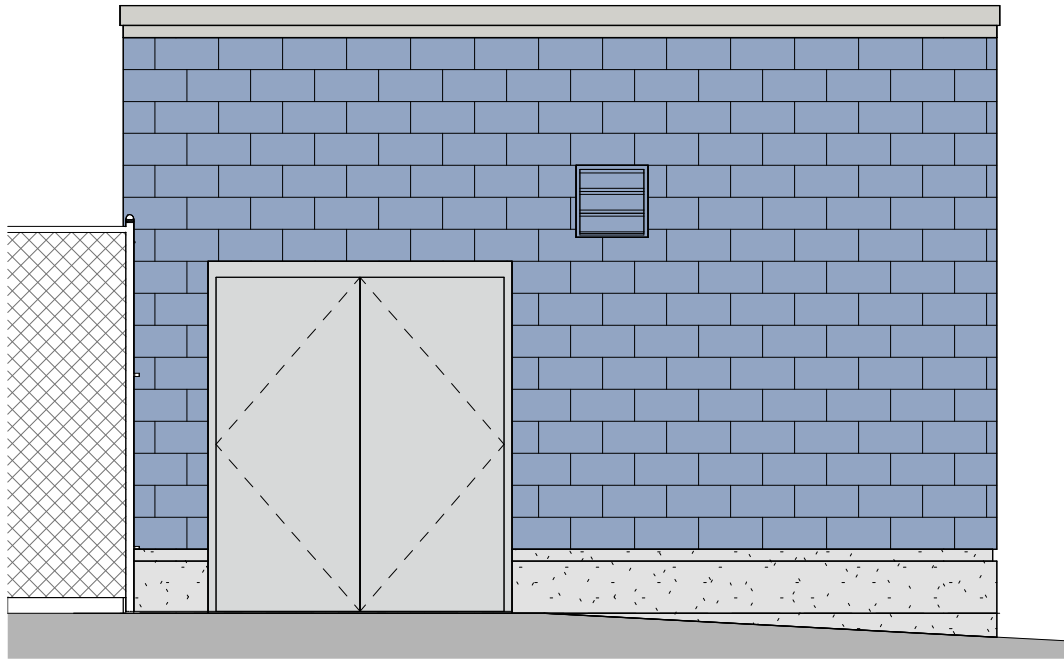
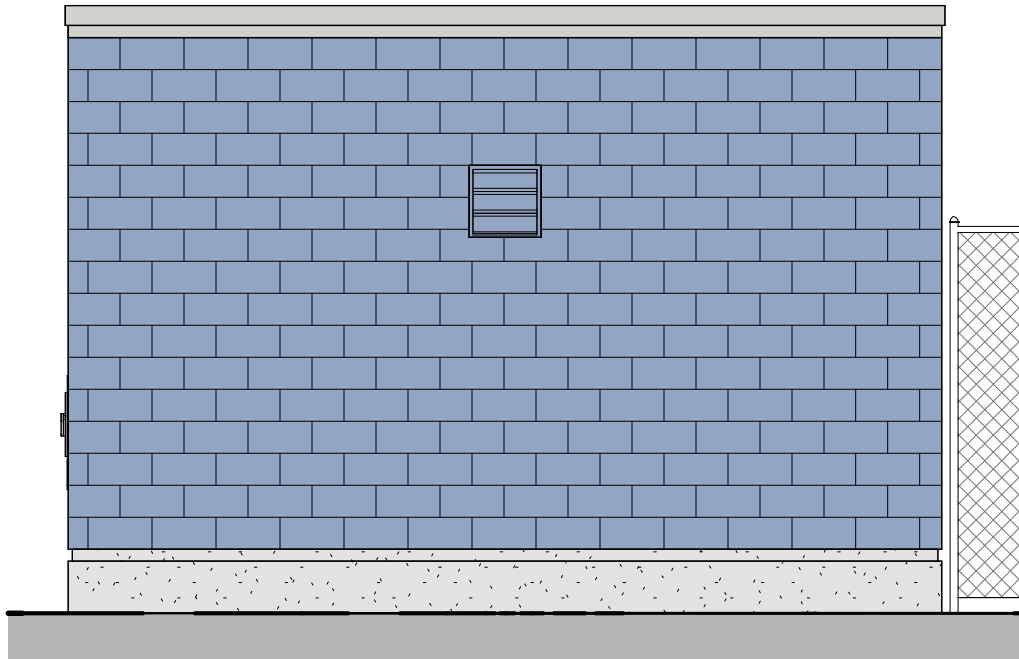
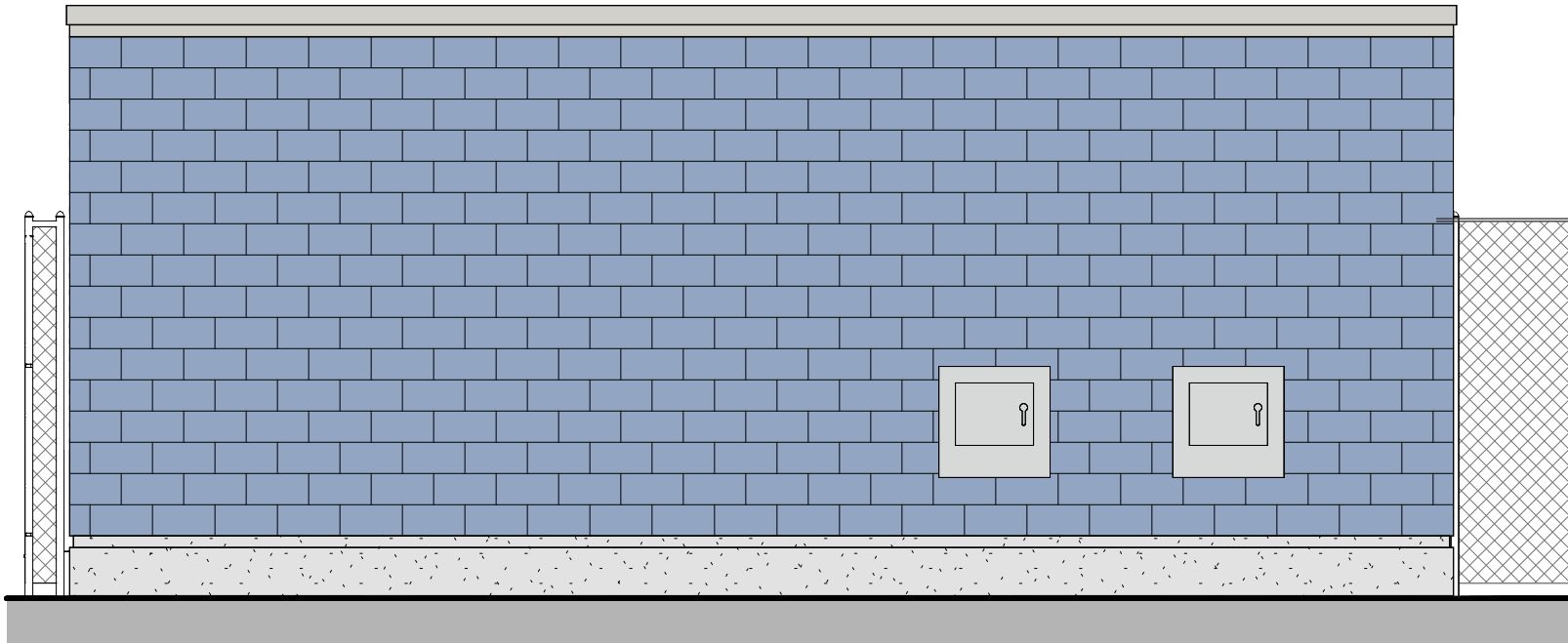


1 BUILDING ELEVATION - NORTH
SCALE: 1/4" = 1'-0"

GRAPHIC SCALE:

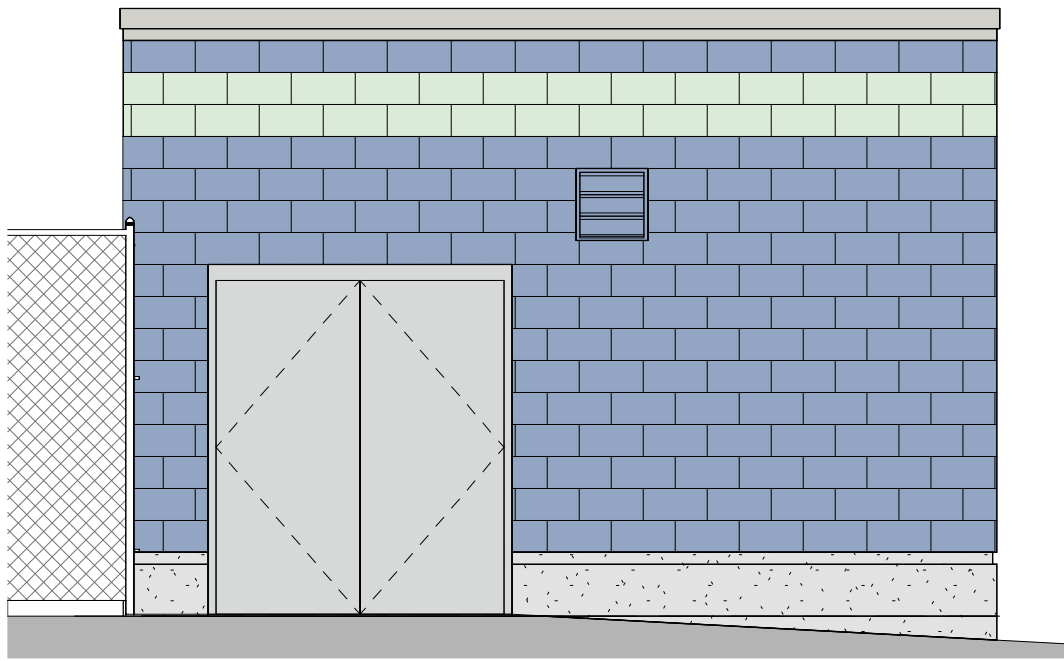
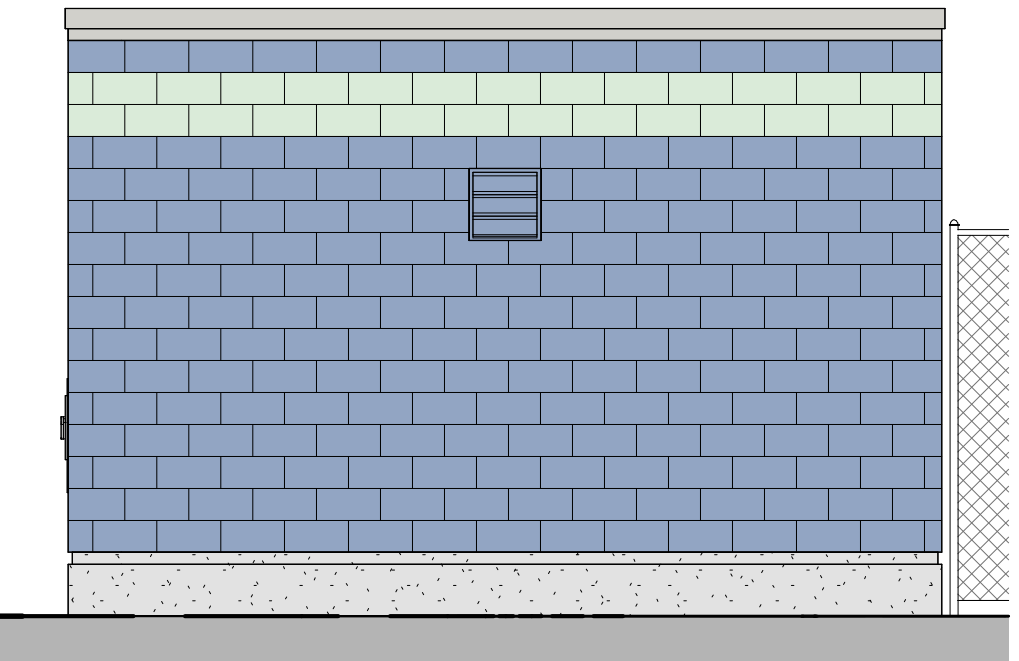
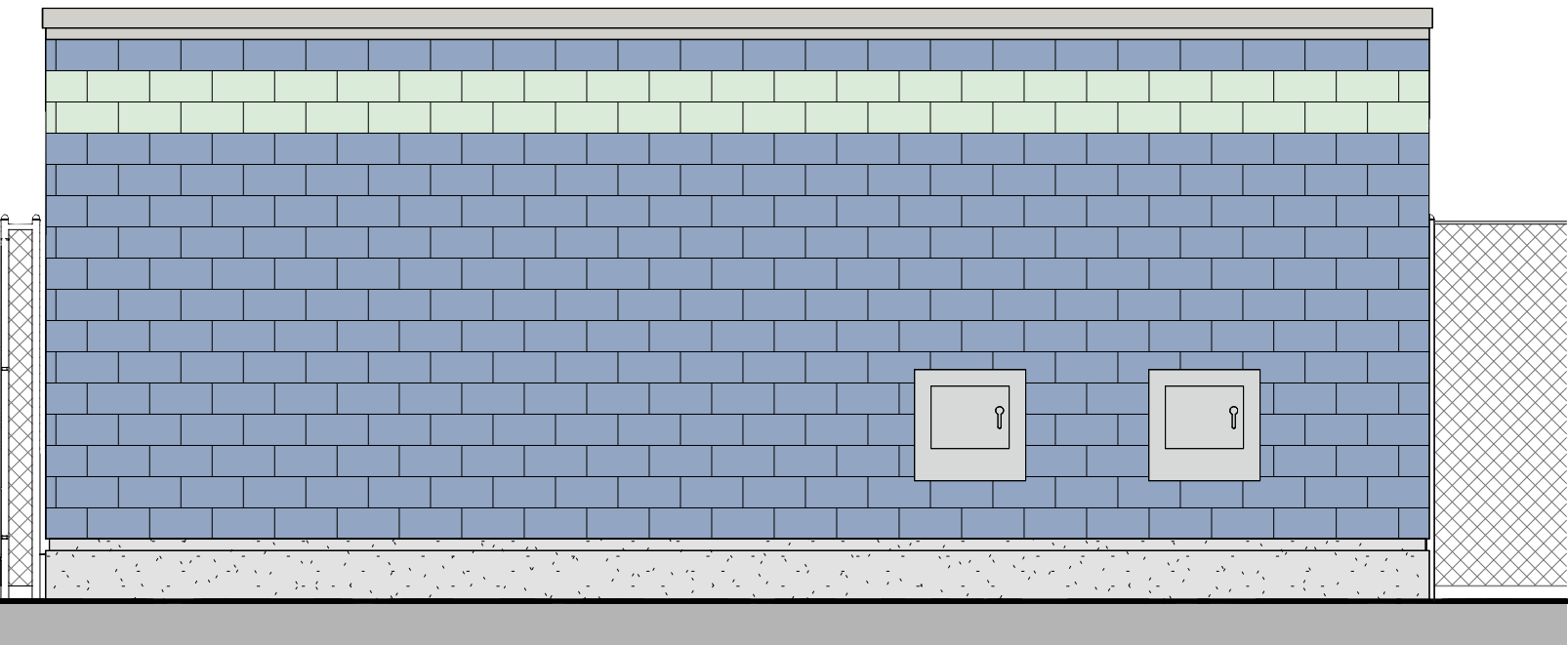


REVISIONS		
ISSUE	DATE	REVISIONS
<div><div><p>1515 ARCH STREET PHILADELPHIA, PA 19102 11TH FLOOR, ONE PARKWAY BUILDING</p></div><div>PROJECT DIRECTOR FRANCESCO CERRAI</div><div>PROJECT COORDINATOR</div><div>SEALS</div><div>CONSULTANT <div>TRANSYSTEMS</div><p>1717 ARCH STREET, SUITE 700 PHILADELPHIA, PA 19103</p></div><div>CITY OF PHILADELPHIA CAPITAL PROGRAM OFFICE 1515 ARCH STREET 11TH FLOOR, ONE PARKWAY BUILDING PHILADELPHIA PENNSYLVANIA</div><div>PROJECT TITLE HILLSIDE RECREATION CENTER - POOL REPLACEMENT 201 FOUNTAIN STREET, PHILADELPHIA, PA 19128</div><div>DRAWING TITLE POOL EQUIPMENT HOUSE - BUILDING ELEVATIONS</div><div><div>PROJECT NO. 16-20-4604-99</div><div>DATE 5/2/2025</div><div>SCALE AS NOTED</div><div>DRAWN BY Author</div><div>CHECKED BY Checker</div></div><div><div>DRAWING NO. A-201</div><div>FILED</div></div><div>NOTE: ALL DIMENSIONS AND CONDITIONS SHALL BE VERIFIED BY THE CONTRACTOR AT THE SITE BEFORE PROCEEDING WITH THE WORK.</div></div>		



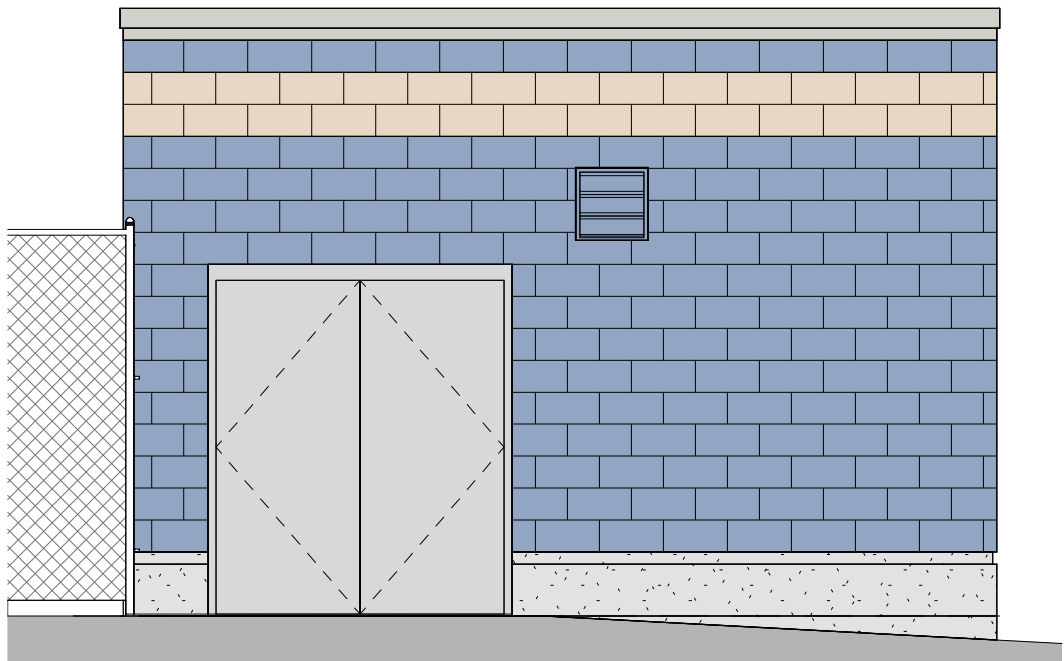
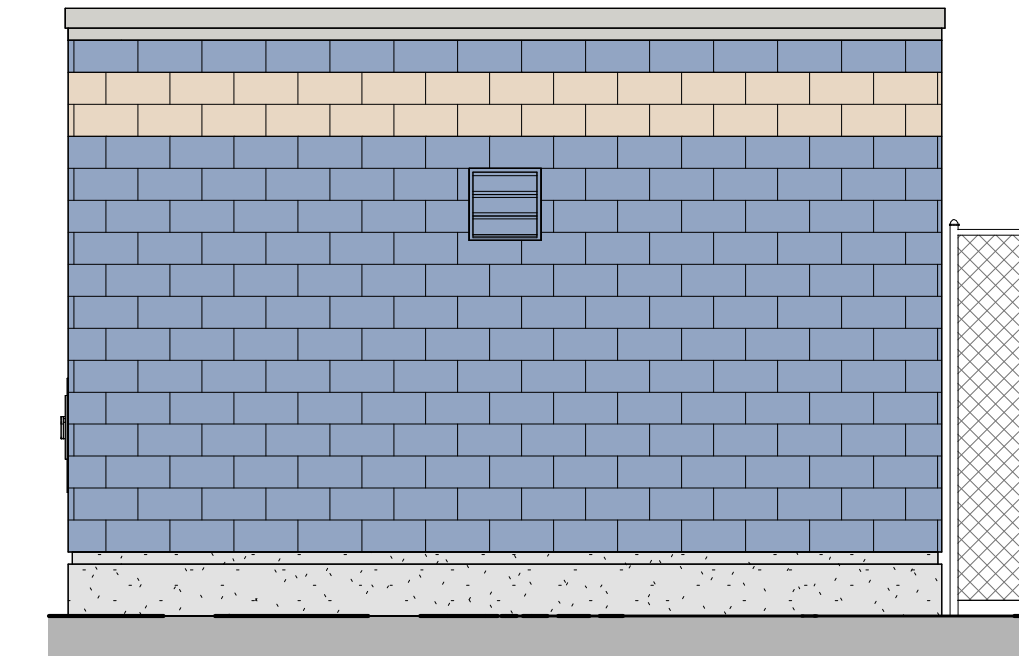
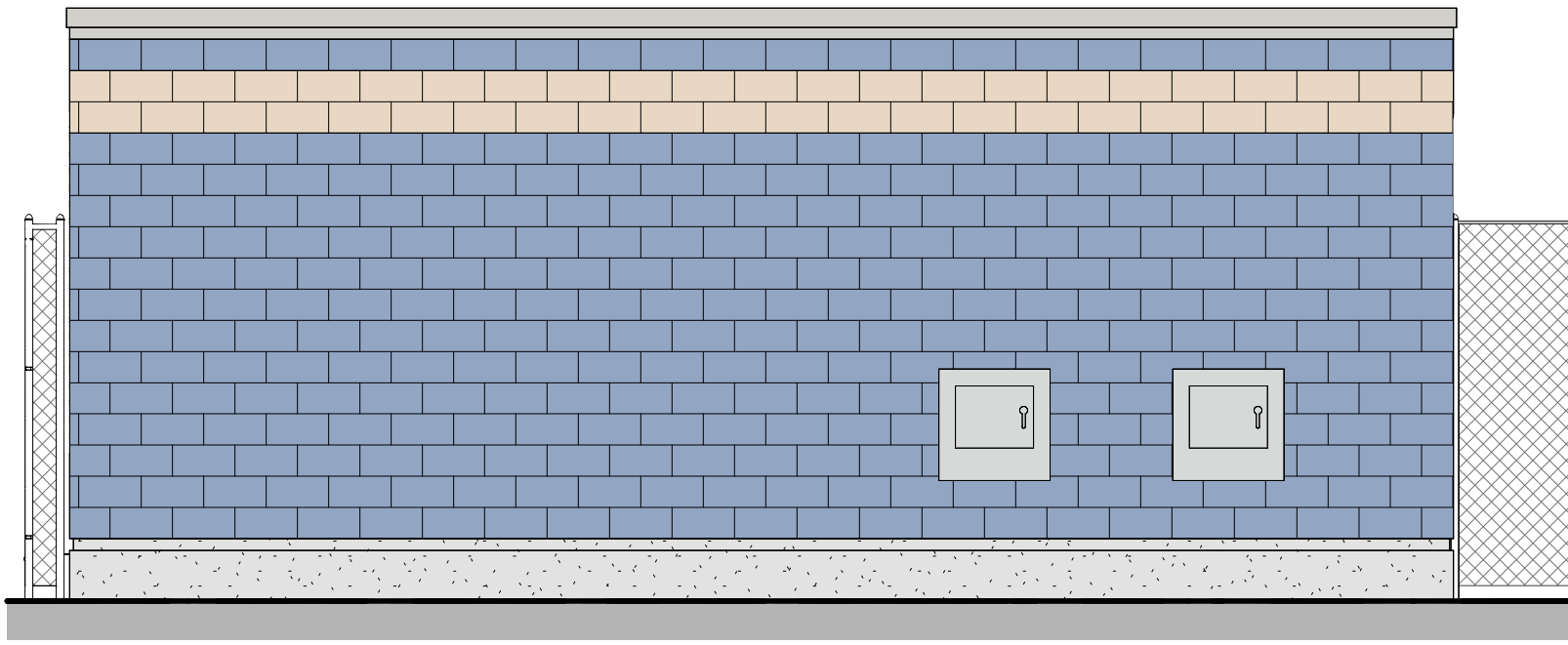
GLAZED STRUCTURAL TILE OPTION 1

SCALE: 1/4" = 1'-0"



GLAZED STRUCTURAL TILE OPTION 2

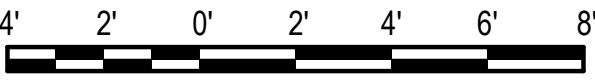
SCALE: 1/4" = 1'-0"



GLAZED STRUCTURAL TILE OPTION 3

SCALE: 1/4" = 1'-0"

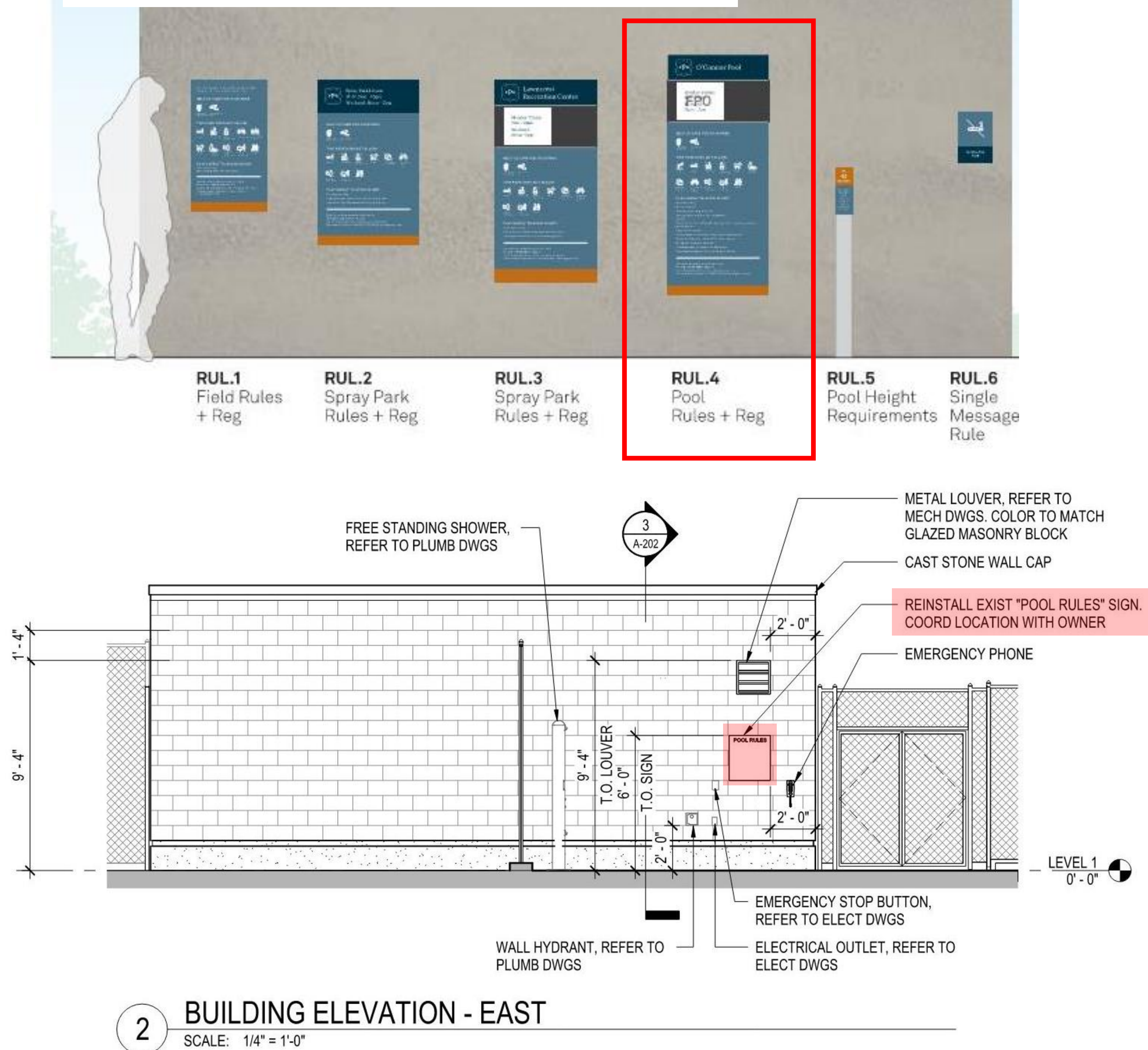
GRAPHIC SCALE:

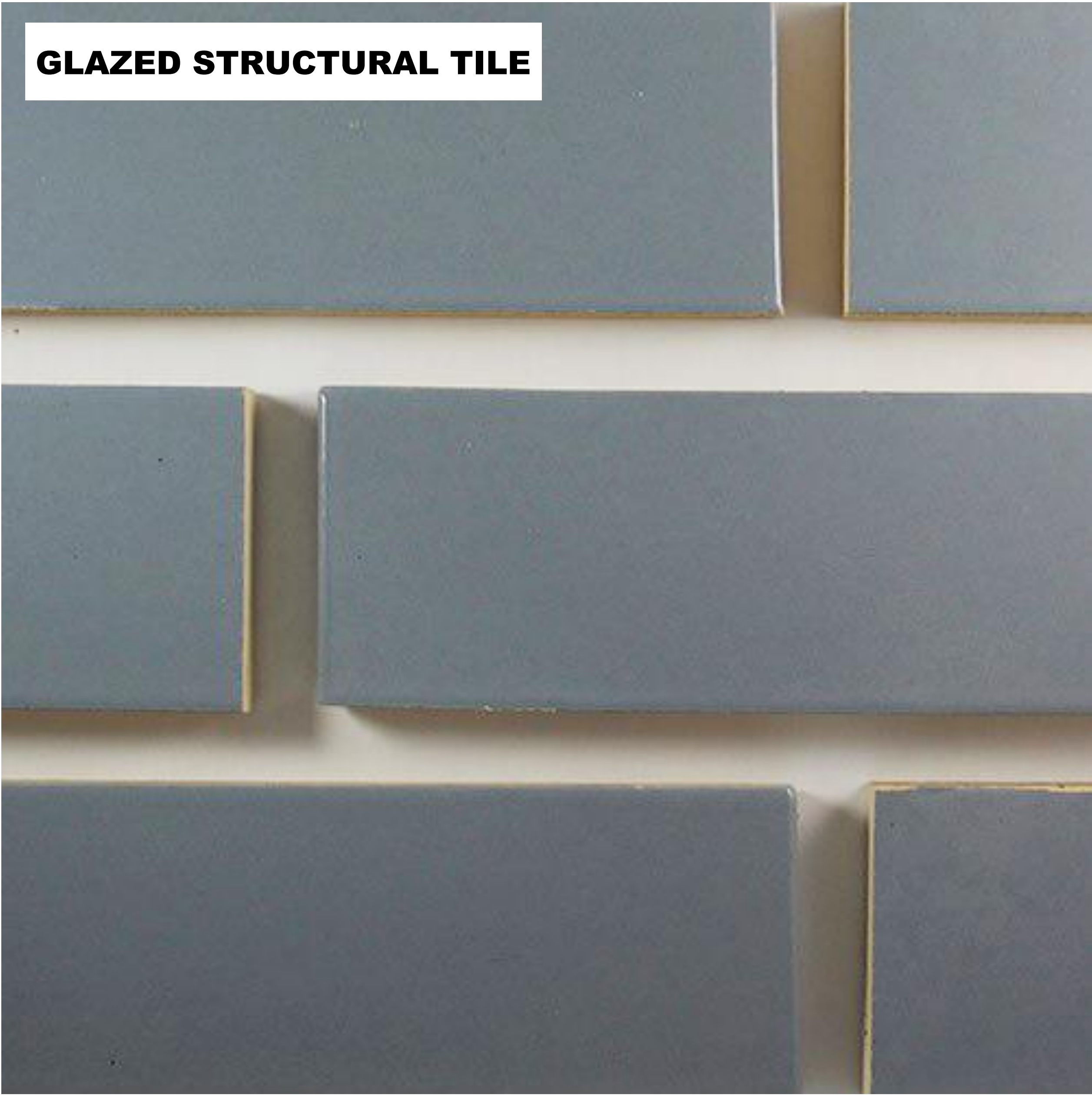


SCALE: 1/4" = 1'-0"

REVISIONS		
ISSUE	DATE	REVISIONS
<div><p>1515 ARCH STREET PHILADELPHIA, PA 19102 11TH FLOOR, ONE PARKWAY BUILDING</p></div>		
PROJECT DIRECTOR		FRANCESCO CERRAI
PROJECT COORDINATOR		
SEALS		
CONSULTANT		<div><p>1717 ARCH STREET, SUITE 700 PHILADELPHIA, PA 19103</p></div>
PROJECT TITLE		CITY OF PHILADELPHIA CAPITAL PROGRAM OFFICE 1515 ARCH STREET 11TH FLOOR, ONE PARKWAY BUILDING PHILADELPHIA PENNSYLVANIA
DRAWING TITLE		HILLSIDE RECREATION CENTER - POOL REPLACEMENT 201 FOUNTAIN STREET, PHILADELPHIA, PA 19128
PROJECT NO.		16-20-4604-99
DATE		3/14/2025
SCALE		AS NOTED
DRAWN BY		Author
CHECKED BY		Checker
NOTE:		ALL DIMENSIONS AND CONDITIONS SHALL BE VERIFIED BY THE CONTRACTOR AT THE SITE BEFORE PROCEEDING WITH THE WORK.

EXISTING POOL SIGN TO BE SALVAGED AND RE-INSTALLED ON EAST ELEVATION OF NEW POOL EQUIPMENT BUILDING





GLAZED STRUCTURAL TILE



STAINLESS STEEL DOORS



MISTY BLUE



PEPPERMINT



CLEAR BEIGE



CAST STONE WALL CAP



**CONCRETE FOUNDATION
BASE - SEALED**

ELGIN BUTLER - BASIS OF DESIGN: COLORED MORTAR AVAILABLE

BUILDING MATERIALS PALETTE



DESIGN PRECEDENT - BRIDESBURG RECREATION CENTER POOL EQUIPMENT HOUSE



SPLASH! POOL LIFT:

The Splash! Lift series meets the Americans with Disabilities Act Access Guidelines (ADAAG 2010). In addition to the standard configuration, the Splash! pool lift is also available in Hi/Lo, Spa, Extended Reach, Splash! 300, Splash! 300 Hi/Lo, and Splash! 300 Spa versions. The Splash! lift installs into your pool deck via anchor, and can be easily removed for winter storage. The Splash! Lift series comes standard with our LiftOperator® Intelligent Control.

KEY FEATURES:

- 344° rotation ensures a safe transfer area.
- Third-party tested & verified ADA compliant
- Integrated armrests
- State of California compliant

SPECIFICATIONS:

- Lifting Capacity: 400 lbs/181.5 kg.
- Extended Reach Lifting Capacity: 300 lbs/136 kg.
- Powered by a 24-volt rechargeable battery. P
- Powder coated stainless steel and aluminum.

ADA COMPLIANT:

Independently tested and verified by a third-party to be compliant with the 1009.2 Pool Lifts of the ADA Guidelines.



ADA ACCESSIBLE POOL LIFT