



Two Penn Center  
1500 John F. Kennedy Boulevard, Suite 1208  
Philadelphia, Pennsylvania 19102  
tel: 215 636-0600

7 April 2025

Philadelphia Art Commission  
1515 Arch Street, 13<sup>th</sup> Floor  
Philadelphia, PA 19102

Re: SEPTA Three Trolley Stations ADA Improvement – 33<sup>rd</sup> Street Station Art Commission Review

Dear Members of the Philadelphia Art Commission:

We are requesting have the above-referenced project placed on the agenda for the Art Commission meeting scheduled for May 14, 2025, to obtain approval for the renovations and additions to be performed at this SEPTA station.

The CDM Smith design team, including our partner architect, Sowinski Sullivan, has been working closely with SEPTA over the last eighteen months to design the work required to make the 33<sup>rd</sup> Street station handicapped accessible. This proposed project is part of SEPTA's program to make its system safe and accessible for the riding public.

The project at the 33<sup>rd</sup> Street station largely uses the prototypical designs for the elevator hoistway enclosure that the Art Commission reviewed and approved for the 19<sup>th</sup> Street station. Minor adjustments have been made to standardize construction detailing to suit all conditions encountered at the three trolley stations (22<sup>nd</sup>, 33<sup>rd</sup> and 36<sup>th</sup> Street) that comprise our larger project. The existing canopies and stair surrounds will be retained and repaired with in-kind materials.

Materials for the elevator hoistway enclosure at street level design have also been chosen for durability, ease of maintenance as well as passenger and public safety. These new structures have been designed to minimize the elevator's visual impact on the existing streetscape. Similar examples can be found at SEPTA's Tasker-Morris and Spring Garden stations on the Broad Street Line. The design will employ a stainless-steel structural frame with a mix of 8" x 8" glass block and aluminum storefront with clear glazing infill. Anticipated height of the structure is approximately 15 feet, largely associated with the override required in the shaft by the elevator code.

We will forward supporting materials for the application no later than May 7, 2025. These exhibits will include photographs of existing conditions, proposed site plans, plans, elevation views and renderings indicating the new work in place.

Please note that federal funding will be used to construct these renovations and additions. Currently, public art is not planned to be included with this project due to the schedule for design and construction but none of the planned improvements at the 33<sup>rd</sup> Street station preclude the incorporation of a public art installation in the future.





SEPTA: Art Commission Review Request for 33<sup>rd</sup> Street Station

7 April 2025

Page 2

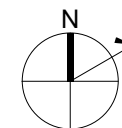
Please contact me with any questions at 215.840.1119 or by email at [kalnersj@cdmsmith.com](mailto:kalnersj@cdmsmith.com) and include Will Kunkle, the SEPTA project manager ([wkunkle@septa.org](mailto:wkunkle@septa.org)) on all official correspondence related to this project.

Sincerely,

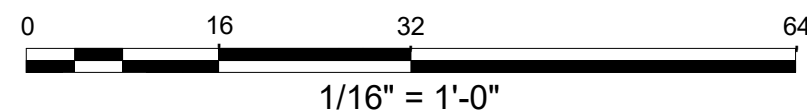
A handwritten signature in blue ink, appearing to read "Scott J. Kalner". The signature is fluid and cursive, with the first name "Scott" and last name "Kalner" clearly distinguishable.

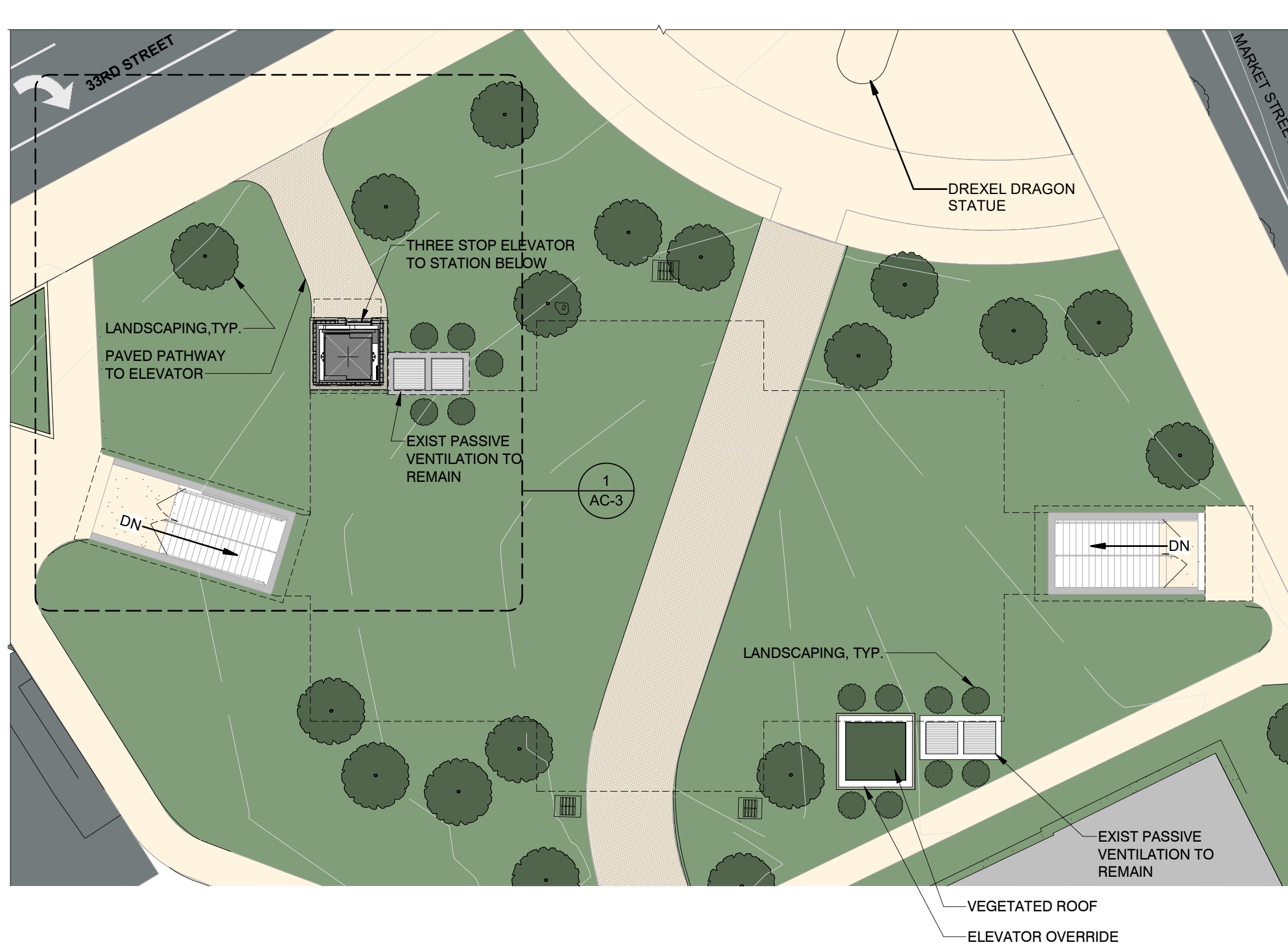
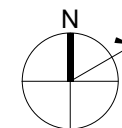
Scott J Kalner, AIA / LEED / PMP

cc: cc: K. Liss (PAC); W. Kunkle, N. Green (SEPTA); A. Nardo (CDMS); G. Mastalerz (SSA)

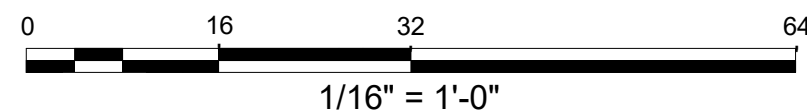


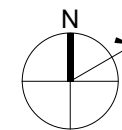
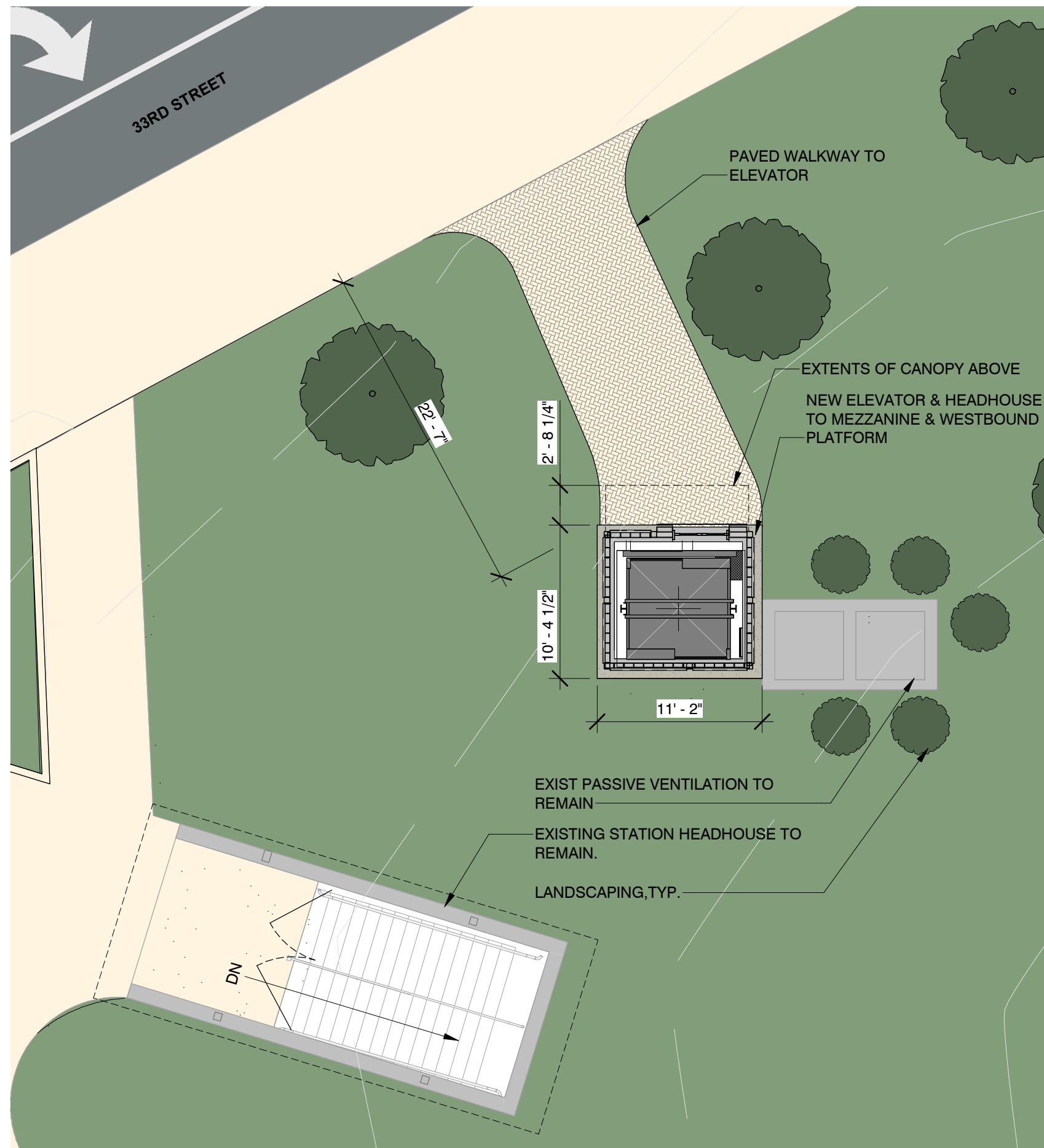
① EXISTING STREET LEVEL PLAN  
1/16" = 1'-0"



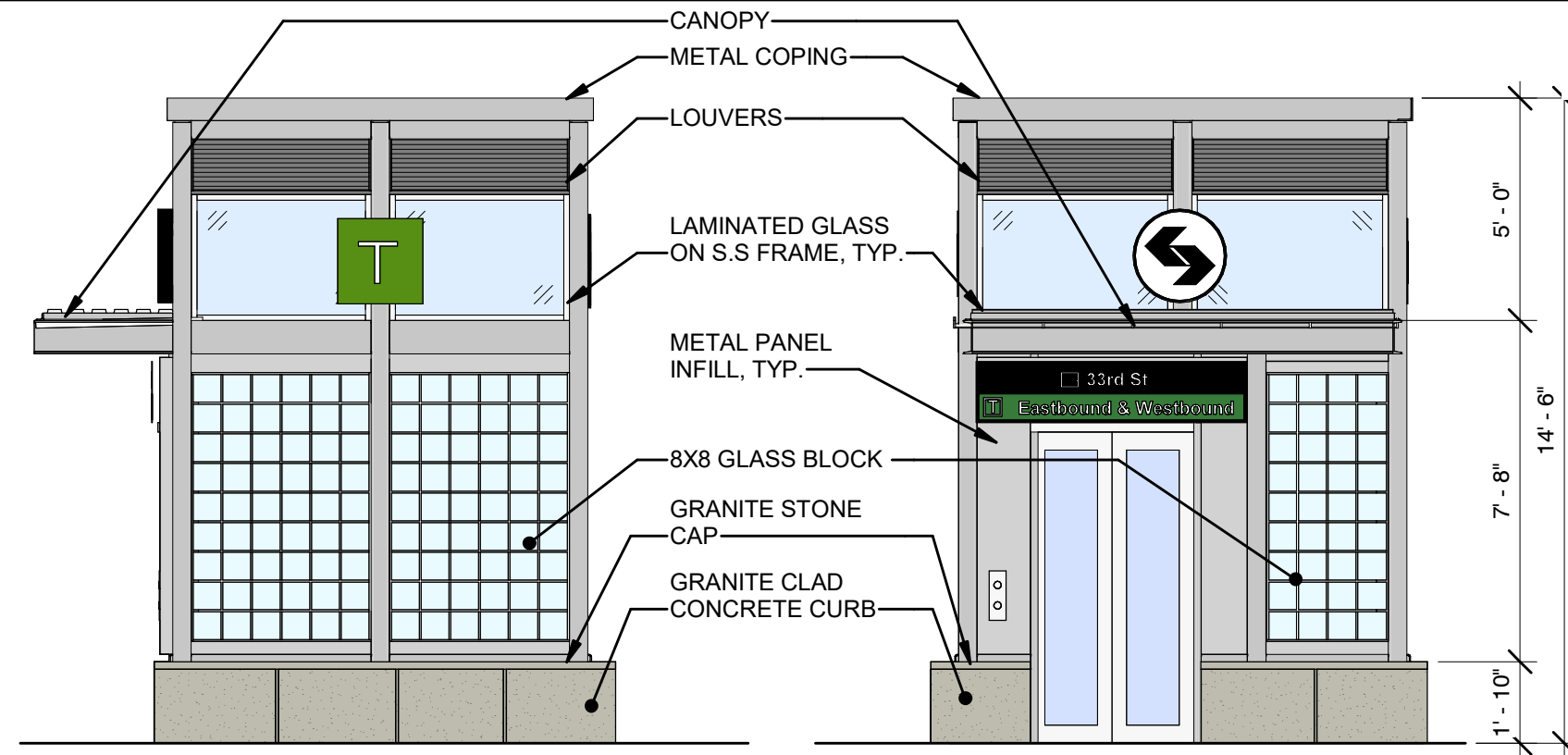


① PROPOSED STREET LEVEL PLAN  
1/16" = 1'-0"



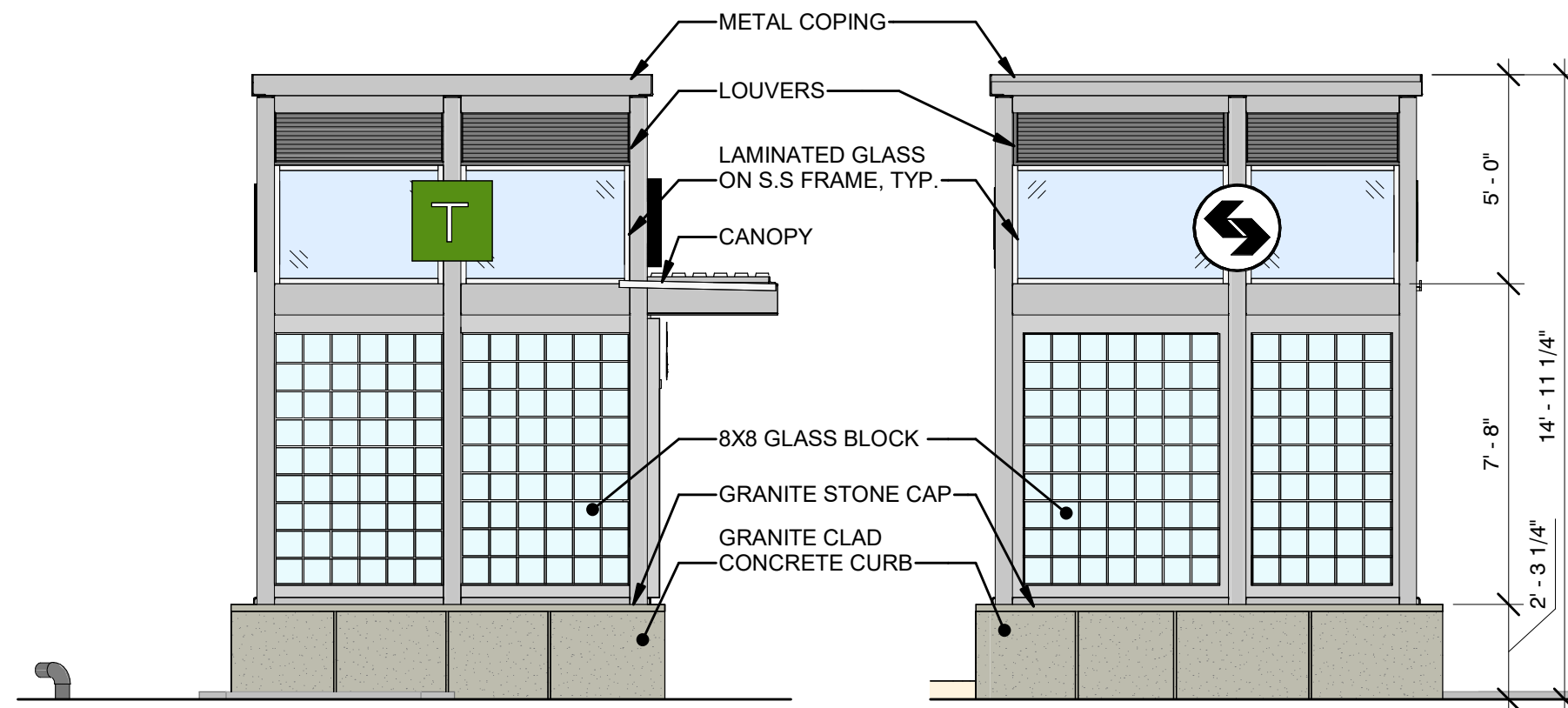






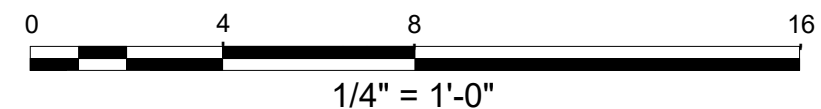
① SOUTHWEST ELEVATION  
1/4" = 1'-0"

② NORTHWEST ELEVATION  
1/4" = 1'-0"



③ NORTHEAST ELEVATION  
1/4" = 1'-0"

④ SOUTHEAST ELEVATION  
1/4" = 1'-0"







① DAYTIME PERSPECTIVE FROM 33RD  
STREET LOOKING EAST  
1" = 1'-0"

**CDM  
Smith**

**SOWINSKI  
SULLIVAN**

date:  
05/14/2025

**AC-5**





**CDM  
Smith**

**SOWINSKI  
SULLIVAN**

date:  
05/14/2025

**AC-6**

NIGHTTIME PERSPECTIVE FROM 33RD  
STREET LOOKING EAST

①  
1" = 1'-0"





SEPTA Trolley  
Stations - 33rd St



SOWINSKI  
SULLIVAN

date:  
05/14/2025

AC-7

EXISTING SITE CONDITION  
PHOTOGRAPHS  
12" = 1'-0"

1





LOUVERS

CANOPY

LAMINATED GLASS ON S.S FRAME, TYP.

GRANITE CLAD CONCRETE CURB

8X8 GLASS BLOCK WITHIN ALUMINUM FRAME

1 PRECEDENT IMAGERY WITH  
PROPOSED MATERIALS  
12" = 1'-0"