



# Cobbs Creek - Eastwick Trail

Above: Public land between Cibotti and Eastwick Recreation Centers

## Background

The original portion of the Cobbs Creek Trail is between Market and 70th Streets. It's part of the Circuit Trails Network, which is the region's nine county trail network, and is also part of the East Coast Greenway. The Cobbs Creek Trail connects to the Schuylkill River Trail via the 58th Street Greenway. The extension of the Cobbs Creek Trail from 70th Street to the Heinz National Wildlife Refuge is split into five segments (A, B1, B2, C, D). Three of these (A, C, and D) are now complete.

## Project Goals

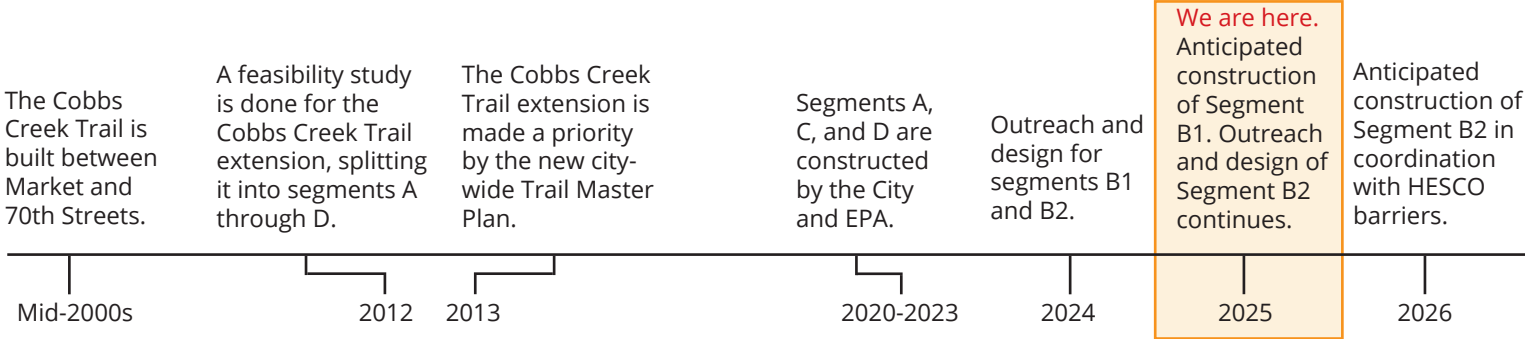
The goal of this project is to provide Cobbs Creek and Eastwick residents with safe access to open space and recreational opportunities as well as a way to reach destinations without a motor vehicle. Cibotti and Eastwick Rec Centers, Penrose Elementary School and Heinz Wildlife Refuge will all have direct trail connections.

## Project History

The feasibility study for this project was completed in 2012. Funding was raised by Philadelphia Parks and Recreation to work on Segments A and D first, which were completed in 2020 and 2022. Segment C was completed in 2023 in conjunction with the restoration of the Clearview Landfill. The pandemic and staffing changes caused a delay of several years before the Philadelphia Streets Department took over the remaining projects: Segments B1 and B2.

## Why is this important?

Multi-purpose and ADA accessible trails provide residents with opportunities to safely walk, roll, or ride a bicycle for exercise or to get where they need to go. This trail will connect residents to school, work, open space, transit stops, and community resources, without having to navigate busy roads.





# Cobbs Creek - Eastwick Trail

## Project Location

### Segment A: 70th to Woodland

Completed early 2020

Before



After



Constructed  
In Progress

### Segment B2: Island to Eastwick Rec Center

In Design

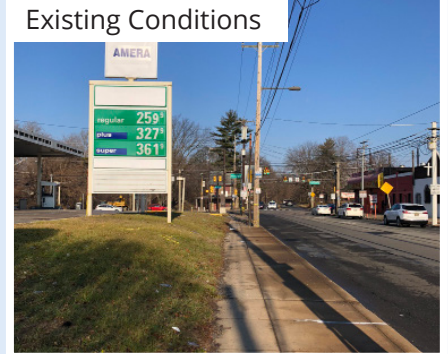
Community walk April 2024



### Segment B1: Woodland to Wheeler

Construction starting Summer 2025

Existing Conditions



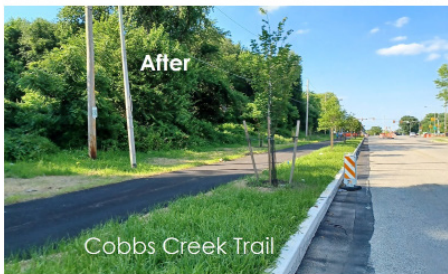
### Segment D: 84th to Heinz Refuge

Completed late 2022

Before



After



### Segment C: Eastwick Rec Center to 84th

Completed late 2023

After

