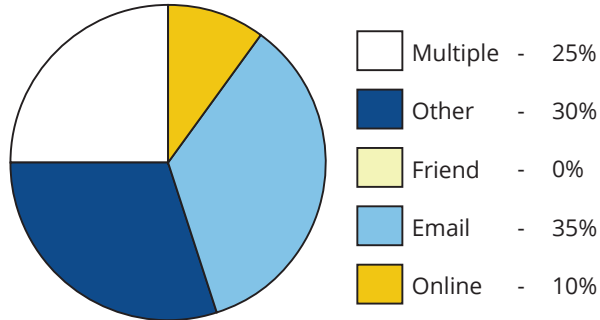


Cobbs Creek - Eastwick Trail

Open House Exit Survey Results

Question 1: How did you hear about the open house?

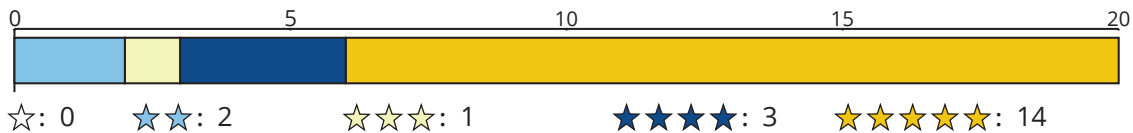


Public Meeting Held on:
April 3, 2025 6:30-8 p.m.

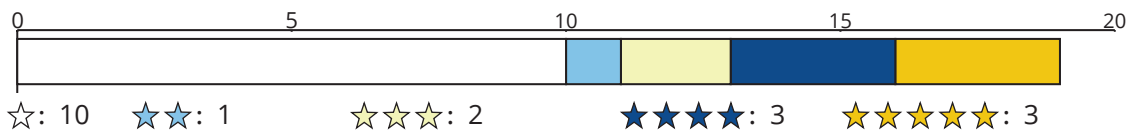
Location:
Cibotti Recreation Center,
Philadelphia, PA

Registered Attendees: 35
Collected Exit Surveys: 20
Comments: 13

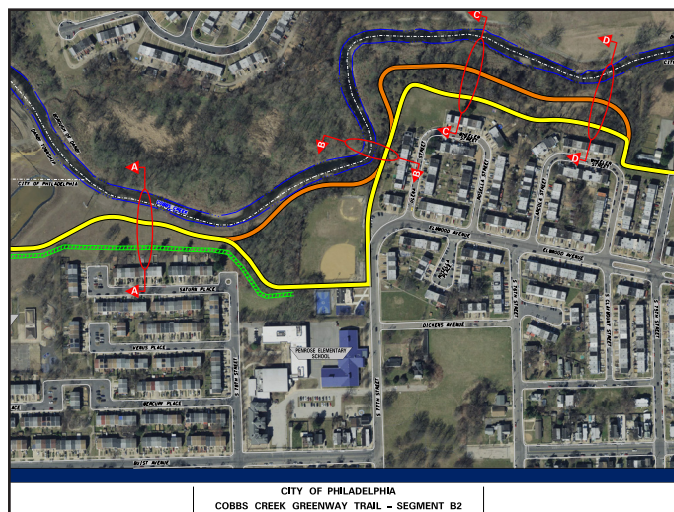
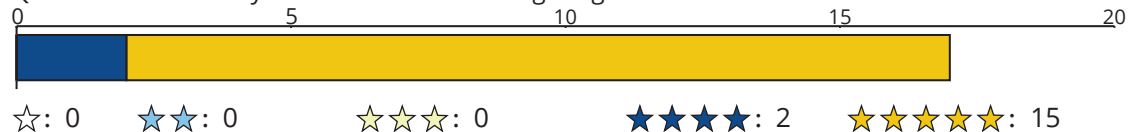
Question 2: What did you think about the Cobbs Creek - Eastwick Trail Project overall?



Question 3: What do you think about the yellow alignment?

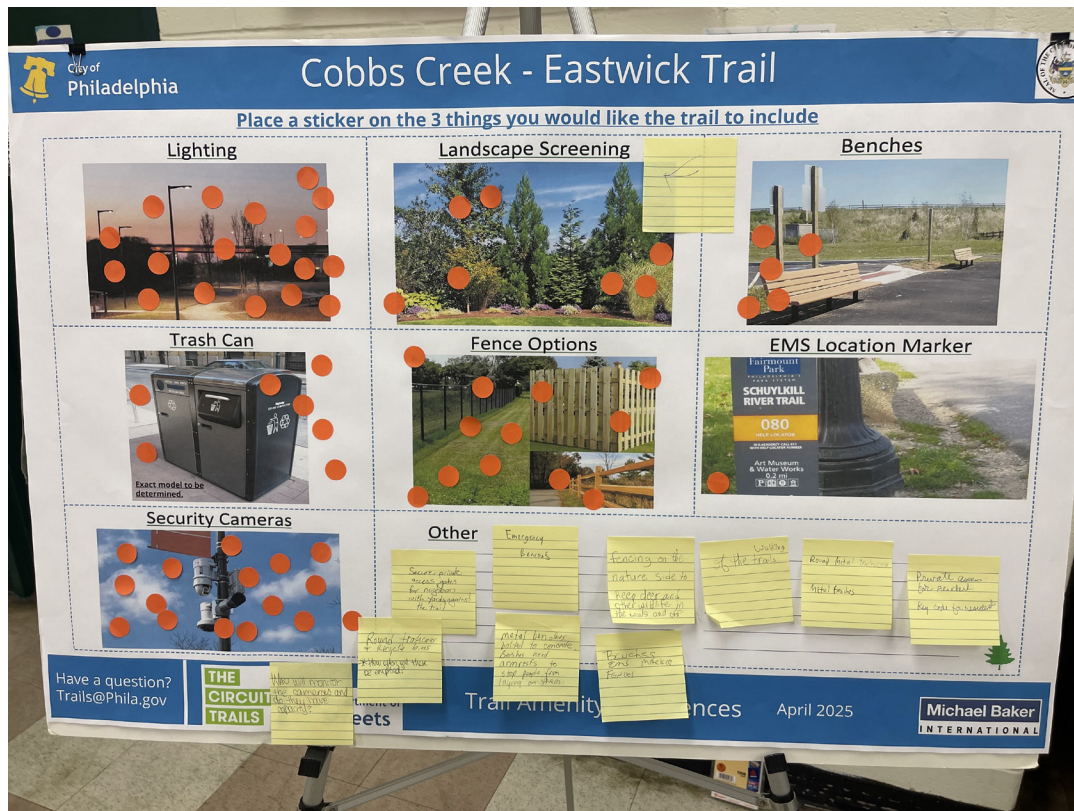


Question 4: What do you think about the orange alignment?



Cobbs Creek - Eastwick Trail

Open House Exit Survey Results



Attendees were given 3 stickers and instructed to place their stickers on the amenity(ies) they would like most.

Amenity	Lighting	Trash Can	Security Cameras	Landscape Screening	Fence Options	Benches	EMS Location Marker
Responses	18	7	16	7	12	5	1

Comments: Who will monitor the cameras and do they have capacity?

Round trashcans & Recycle bins. *How often will these be emptied?

Secure private access gates for neighbors with yards against the trail

Emergency Beacons

Metal benches bolted to concrete. Benches need armrests to stop people from laying on them.

Fencing on the nature side to keep clear and other wildlife in the woods and off

Benches EMS Markers Fences

Walking of the trails

Round metal trashcans / Metal Benches

Private access for resident / Key code for resident

Cobbs Creek - Eastwick Trail

Open House Exit Survey Results

Question 5 (Public Comments): Do you have other comments or concerns? Please write them here.

- Being addressed, lighting, security, fences, flowers, & trees.
- I'm all for it!!!
- Yes I will join the Neighborhood group
- Would like to see trail closer to creek (orange). Would like some fencing but not necessarily blocking view.
- Metal benches w/ armrests in middle to prevent people from sleeping on them. Lots of lights along trail. Round trash & recycle bins along trail. Trees & flowers planted.
- Looks good, please make sure cameras are available and plenty of lighting.
- I would [like] for the trail to [be] maintained frequently once it is completed and have adequate lighting & safety features.
- Parks and Recreation needs as much funding as possible (need to reach out to wealthy benefactors) to take down trees that the city is responsible for – trees that are on the curb destroying tax-payers sewer lines.
- Orange line doesn't lend with my property.
- Security, lighting, and maintenance.
- The yellow is too close to Penrose. Our children play at the Rec Center and the field.
- You need to take care of the area.