



# Eastwick: From Recovery to Resilience

Spring Town Hall - March 27, 2025



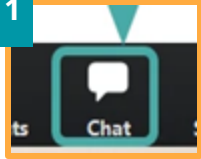
City of  
**Philadelphia**

# Zoom Functions

**Please note:**  
This meeting will be recorded

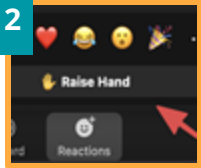
## To ask questions:

1



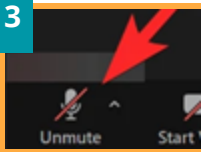
Use the **chat** function to ask questions at anytime

2



Use the **raise hand** function to ask verbally

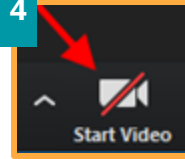
3



Click the **unmute** function to speak when called upon

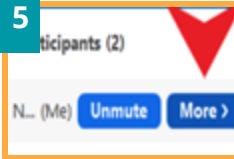
## If you prefer to remain anonymous:

4



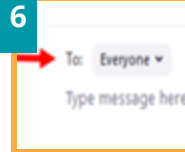
Turn off your camera by clicking the **camera button** at the bottom of the zoom window

5



Change your name by clicking **participants**, and then clicking **more** next to your name OR clicking the **three dots** next to your name and selecting the 'change name' function from the drop-down menu

6



Ask questions anonymously by submitting them through the **direct message** option at the bottom of the chat window to **Taylor Quinland**.



# Agenda



Introduction



*OPEN FORUM*



Flood Resilience Updates



Transportation Updates



Community Updates



Announcements and Closing



# Who's in the Virtual Room



FEMA



Eastwick Friends & Neighbors Coalition



THE CITY OF PHILADELPHIA  
OFFICE OF  
SUSTAINABILITY

What Are the Steps  
To Reach Our Goal





# Open Forum

# Mayor's Office of Neighborhood and Community Engagement

Programs and Strategy

*March 27, 2025*



Mayor's Office of  
Neighborhood and Community Engagement

# Neighborhood Community Action Center Program

*Bringing Philadelphians a government they can  
see, touch, and feel*



Mayor's Office of  
Neighborhood and Community Engagement



**C****L****E****A****R****S T R A T E G Y****Connect**

Meet the community where they are

- Walk-ins at NCAC
- Distribution of Needs Assessment
- Community Advisory Board Member Outreach
- Neighborhood Walks + Canvassing

**Listen**

Listen and document community needs—don't assume, every community is different

- Data Collection:
- Needs Assessment
  - Community issues documented and entered in CRM database

**Engage**

Prioritize top issues, convene stakeholders, create a plan of action to address community needs and issues

- Prioritize top issues from data collected during "Connecting and "Listening" phases
- Convene Stakeholders and City Departments etc.
- Create plan of action with timelines to address issues presented

**Activate**

Execute plan of action to address community needs and concerns

- City Departments, Stakeholders, NCAC Team carry out action plan to address and

**Repeat**

Follow up and ensure issue is resolved

*\*Repeat CLEAR Strategy until community is self-sufficient\**

- Assess on what worked, what didn't work and what can be done better
- Documentation
- Follow-up with departments if things are not completed by the original agreed upon date, then determine the actual date of completion and/or timeline

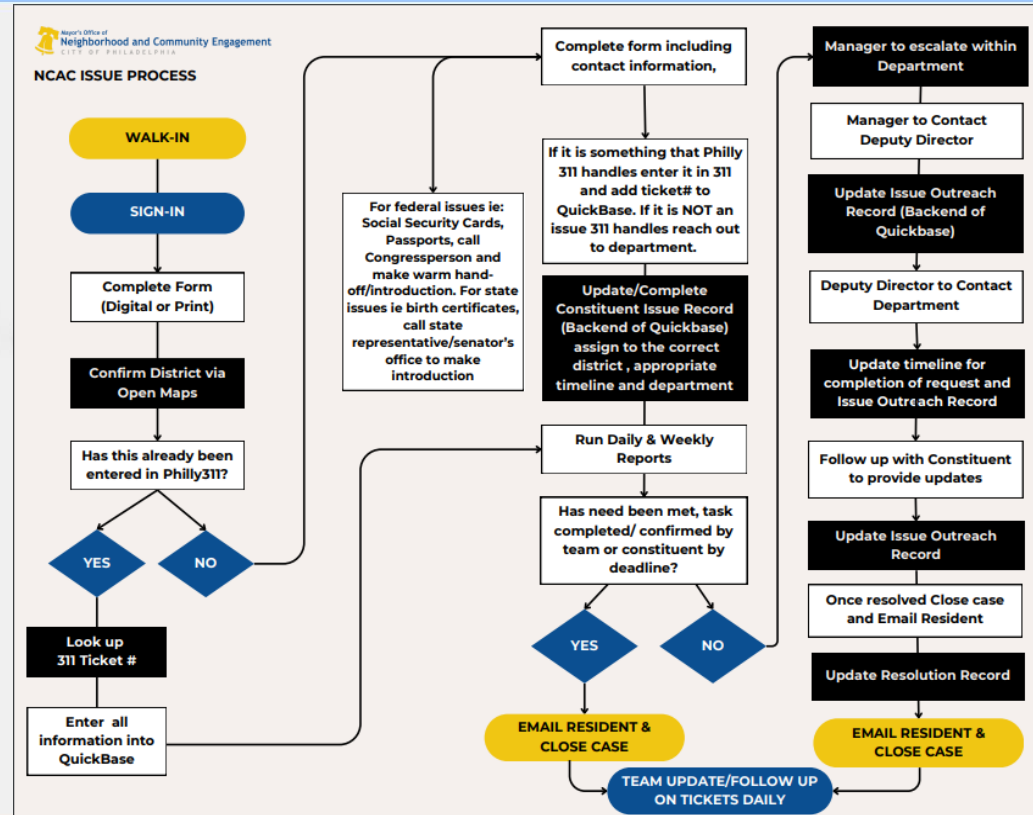
# Neighborhood Community Action Centers (NCACs)

- Serve as "Mini-City Halls"
  - a Connection between the Community, The Mayor's Office and City services; ensuring neighborhood needs are met.
  - Provide access to City Resources and provide residents with a government they can ***see, touch and feel***.
- Focus on identifying and addressing macro-level community issues such as:
  - Illegal dumping, abandoned cars, potholes, lighting, safe corridors, etc.



# NCAC Procedures

- Open Daily, Monday-Friday
- Issue tracking through Quickbase
  - Our CRM is used to document and track resident and community issues from start to resolution
    - Daily and weekly reports are run to ensure issues are getting addressed in a timely manner



# NCAC Locations

## Neighborhood Community Action Center Locations

<b>1st District</b>	Open Jennifer Romano, Manager Hawthorne Cultural Center 1200 Carpenter st	<b>6th District</b>	<b>Edmund</b> 7374 Edmund St Basil Lester, Manager
<b>2nd District</b>	Opening Soon Lewis Maye, Manager	<b>7th District</b>	Rivera Rec Center 3201 N 5th St Alexander Reyes, Manager
<b>3rd District</b>	<b>Community of Compassion CDC</b> 6150 Cedar Ave Alexandra Kyros, Manager	<b>8th District</b>	<b>Coleman Library</b> 68 W Chelten Ave Cameron Holmes, Manager
<b>4th District</b>	<b>Daroff School</b> 5630 Vine St Rennie Parker, Manager	<b>9th District</b>	<b>Logan Library</b> 1333 Wagner Ave Gil Matthews, Interim Manager
<b>5th District</b>	<b>MLK Rec Center</b> 2101 Cecil B Moore Ave Keith Dial, Manager	<b>10th District</b>	<b>Robert Hayes Memorial Rec Center</b> 9850 Roosevelt Blvd. Tom Campion, Manager

# NCAC Program x Cabinet



Mayor's Office of  
Neighborhood and Community Engagement

# Where does Cabinet come in?

- Day in the "Mini-City Hall"
  - Cabinet member will get to understand the influx of issues received in the "Mini-City Hall"
  - Observe CLEAR strategy in action
  - Have time to take their regular meetings and do regular work
- Present at Community Meeting
  - Present important information directly to the community
- Attend Community Advisory Board Meeting
  - Take part in creation of Plan of Action to address community issues

# **Next Steps: Scheduling Your Time at our Neighborhood Community Action Centers**





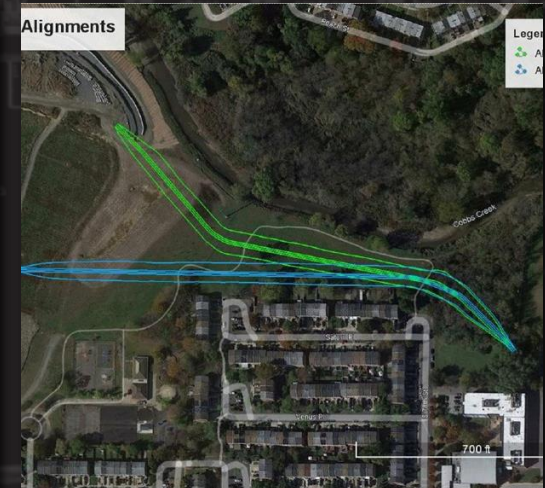
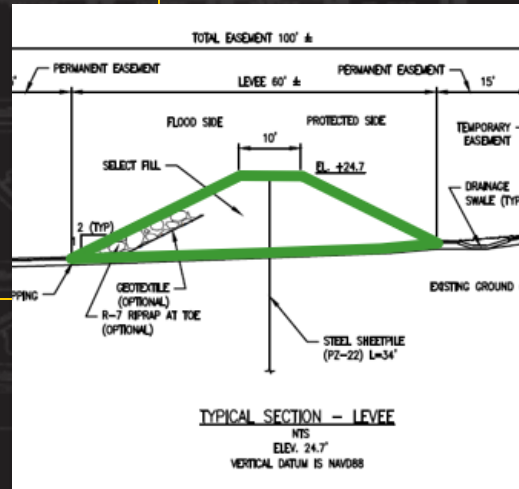
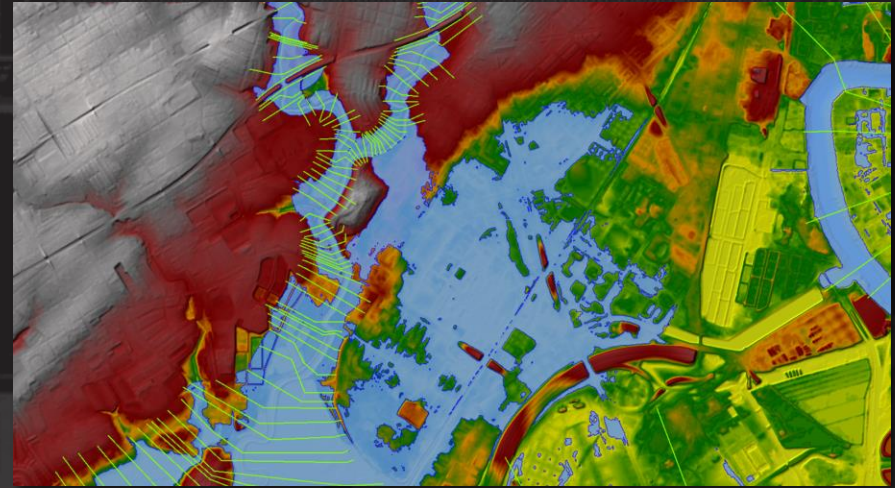
# Flood Resilience Updates: US Army Corps of Engineers



# EASTWICK FLOOD RISK MANAGEMENT FEASIBILITY STUDY

Eastwick: From Recovery to Resilience  
Town Hall

27 March 2025



US Army Corps  
of Engineers®



# TSP SUMMARY

The TSP includes a levee along Cobbs Creek within the Eastwick neighborhood







U.S. ARMY

# GEOTECHNICAL INVESTIGATION



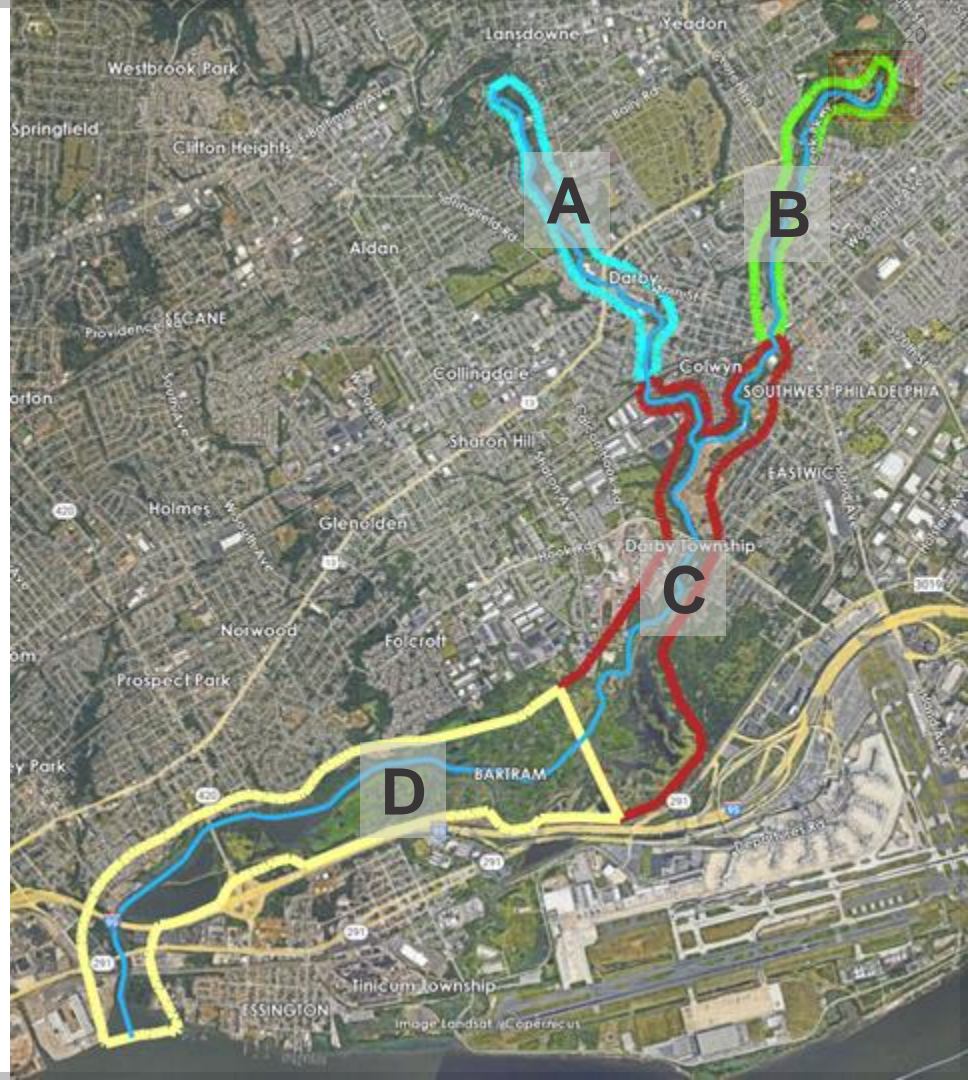


U.S. ARMY

# BATHYMETRIC SURVEY

- **Bathymetric Survey**  
(instream + 25 ft from top of bank)
  - Area 'A' – Darby Creek from upstream of USGS Gage at W. Providence Road – 200 ft XS spacing
  - Area 'B' – Cobbs Creek from upstream of USGS Gage at Mt. Moriah to Railroad – 200 ft XS spacing
  - Area 'C' – Darby and Cobbs Creeks from Railroad to middle JHNWR – 50 ft XS spacing
    - Includes limited topographic data survey at levee tie-in areas
  - Area 'D' – Darby Creek from middle JHNWR to confluence with Delaware River – 200 ft XS spacing
- **Bridge Data Survey**
  - Darby Creek – 11 bridges
  - Cobbs Creek – 9 bridges, 1 dam (Woodland)

\* 2022 LiDAR topography from City of Philadelphia will be utilized for topography outside of stream channels for entire project area





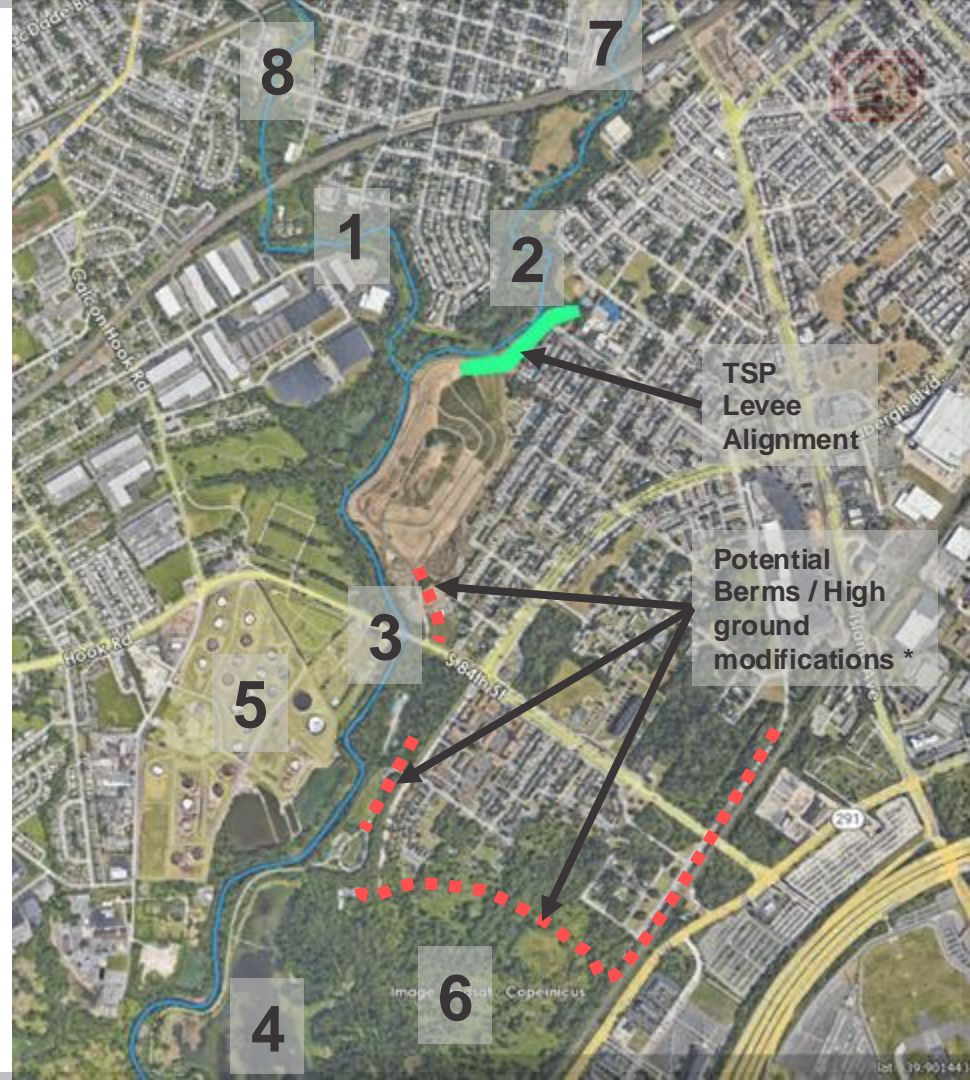


U.S. ARMY

# COMPLEMENTARY MEASURES – NEXT PHASE

- **Dredging of stream channels to increase capacity (all reaches in project area)**
  - Excavate channel to increase capacity
- **Floodplain benching/lowering (1, 2)\***
  - Along both Darby and Cobbs Creeks
- **Modification of Hook Road Crossing (3)\***
  - Increase capacity, reduce pinch point
- **Operations of USFWS Impoundment (4)**
  - Modify operations, possible additional flood storage
- **Tank Farm Wetland Restoration (5)**
  - Connect flows from US of Hook Road
  - Expand USFWS wetland, floodplain storage
- **128-acre Parcel Wetland Restoration (6)**
  - Expand USFWS wetland, additional storage
- **Additional FRM Measures Upstream on Darby/Cobbs (7, 8) – As necessary, undetermined**

*\* Draft Feasibility Study included modeling of four (4) complementary measures within portions of 1 (floodplain benching US/DS of Hook Rd), 3 (clean bridge opening at Hook Rd), and included potential berms (red dashes); all of which will remain in the suite of modeling alternatives moving forward, for a total of twelve (12) potential complementary measures, plus dredging.*







**REAL ESTATE EASEMENT &  
TANK FARM OPPORTUNITIES**



# Discussion and Questions





# Flood Resilience Strategy



# Eastwick: from Recovery to Resilience

## Interim and Near-term Flood Resilience

Flood Recovery Grant Program



Place-based Messaging System



Community Preparedness



HESCO Flood Barriers



Flood Ready Homes Guide



## Long-term Flood Resilience Strategy

Nature-based Solutions



Voluntary Buyout?  
Reconstruction?  
What else?

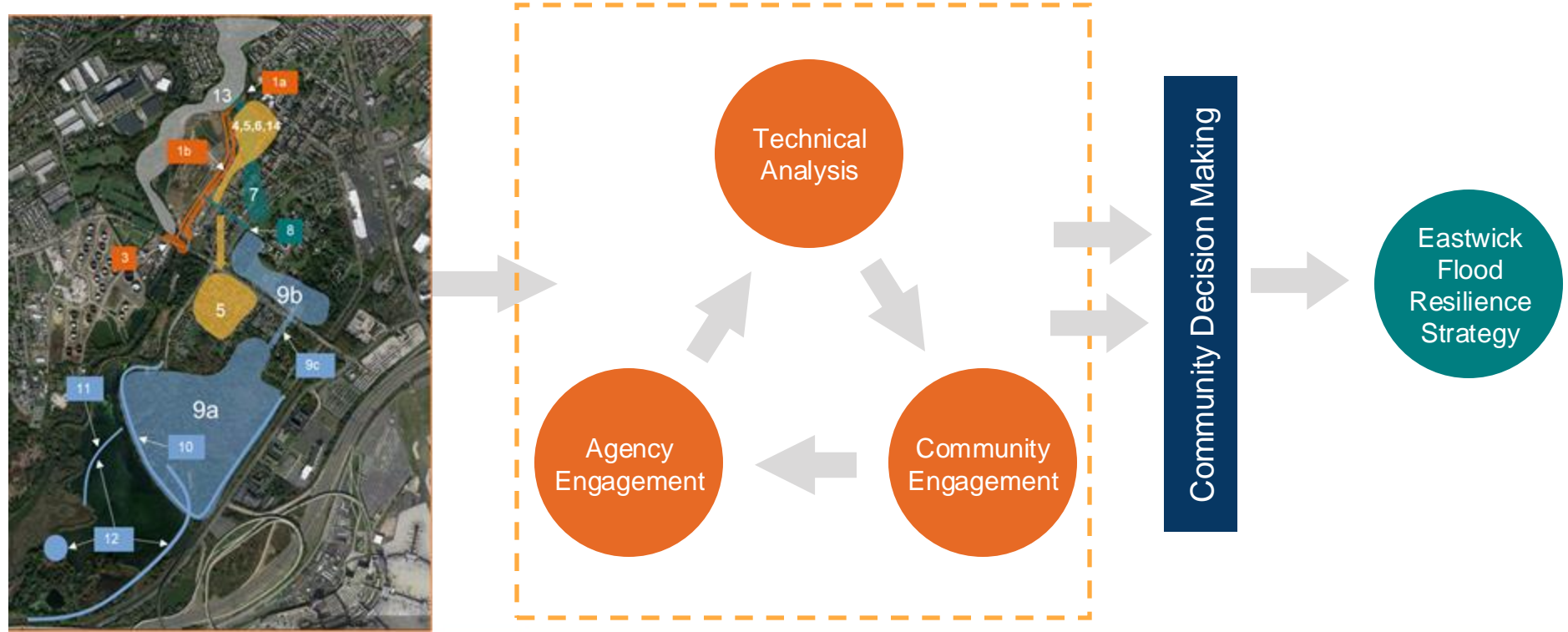
Cobbs Creek Levee



Relocation/Landswap



# Approach for Flood Resilience Strategy



## Actions:



Formalized a community committee, the **Flood Mitigation Council of Eastwick (FMCE)**



Continued coordination and collaboration through a **Flood Resilience Strategy Group**

```
graph TD; A[Strengthen Partnership and Collaboration] --> B[Create a Shared Understanding of the Issues + Opportunities]; B --> C[Co-Develop Actions that Build a Resilient Future]; C --> D[Deliver and Sustain Transformation Initiatives]; D --> A;
```

Deliver and Sustain Transformation Initiatives

Co-Develop Actions that Build a Resilient Future

Strengthen Partnership and Collaboration

Create a Shared Understanding of the Issues + Opportunities

## Actions:



**Comprehensive mapping and feasibility** analysis of various flood reduction measures.








**Host dialogues** to share information about flood resilience measures.

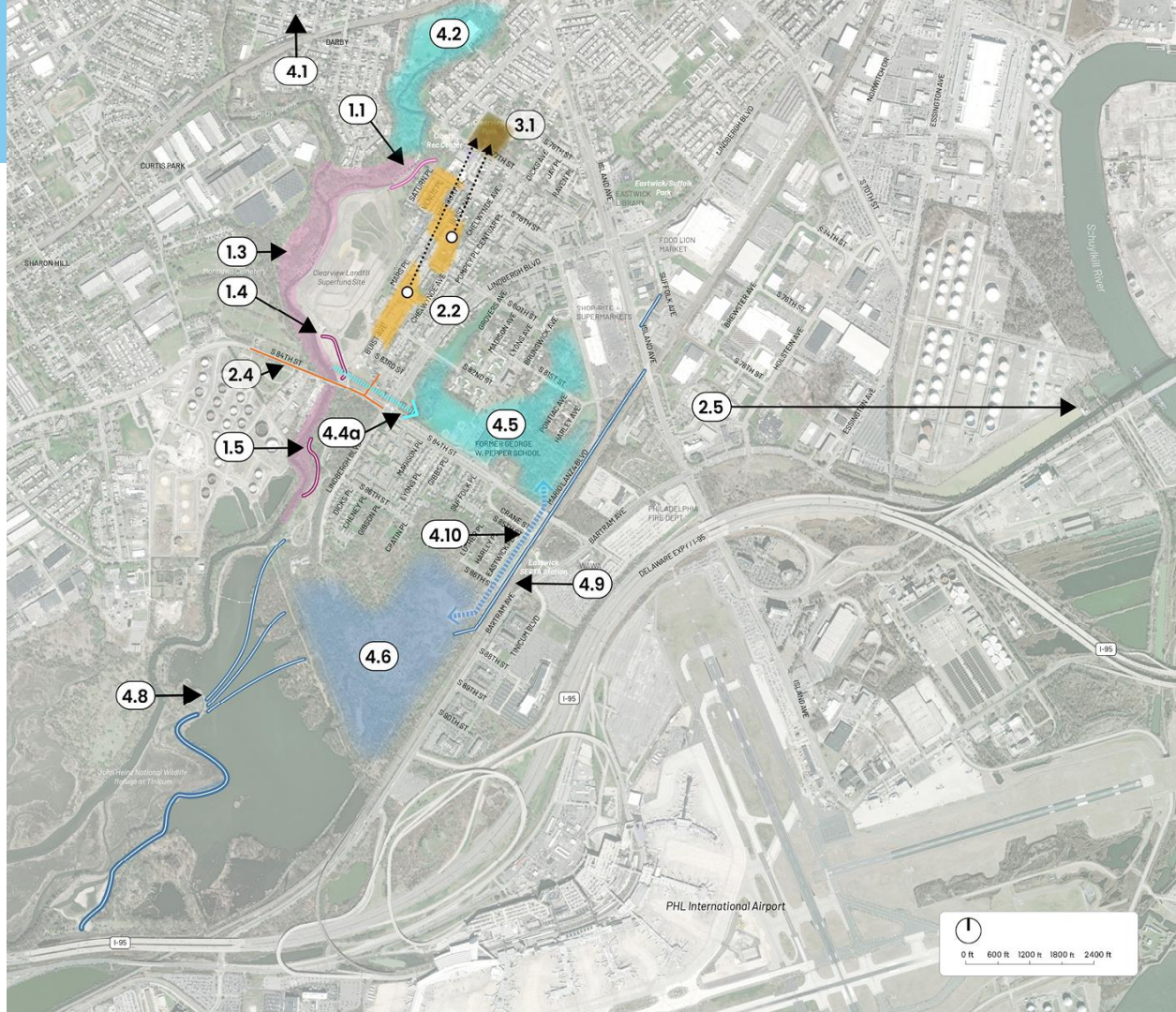


**Initiate working groups** to dive deep into flood resilience measures.



# FLOOD RESILIENCE OPTIONS UNDER CONSIDERATION

-  **Levees, Berms and Barriers**  
(1.1 - 1.5)
-  **Infrastructure Improvements**  
(2.2 - 2.5)
-  **Buyouts, Relocation, Other  
Property-level Measures**  
(3.1)
-  **Nature-based Solutions  
(Upstream of 84<sup>th</sup> Street)**  
(4.1 - 4.5)
-  **Nature-based Solutions  
(Downstream of 84<sup>th</sup> Street)**  
(4.6 - 4.10)





## PROPOSED EASTWICK FLOOD MITIGATION MEASURES

These measures are not mutually exclusive; rather it's the combination of these measures in the appropriate places that will have the greatest impact in reducing flood risk.

### LEVEES, BERMS, AND BARRIERS



An earthen and/or concrete structure, designed to contain, control, or divert the flow of water in order to reduce the risk of flooding by stopping the flow of water over land.

### EXAMPLE PROJECT



LOUISIANA COUNTY LEVEE TRAIL - WYOMING, LA

### FLOODING TYPES ADDRESSED

RIVER  
COASTAL

### TIMEFRAME

MID-TERM  
(6-10 YRS)

### STORM SEWER INFRASTRUCTURE IMPROVEMENTS



Increase and enlarge the storm sewer drainage infrastructure: Build pipes, culverts, channels, tide gates, and pumping stations to help drain water out of Eastwick faster.



EXAMPLE OF ENLARGED PIPES AND CULVERTS

RIVER  
STORM SEWER

MID-TERM  
(6-10 YRS)  
TO  
LONG-TERM  
(10-20 YRS+)

### BUYOUTS, RELOCATION, AND OTHER PROPERTY LEVEL MEASURES



An organization or agency buys homes at their fair market value and returns the land to its natural state. Buyouts can be done at different scales (i.e., individual homes, attached homes, or whole blocks), but buyout strategies vary depending on the type of housing and location.



RELOCATION PROPOSAL - RUE DE JEAN CHARLES - LA

RIVER  
COASTAL  
STORM SEWER

MID-TERM  
(6-10 YRS)

### NATURE BASED SOLUTIONS: WETLANDS STORAGE AND CONVEYANCE



Activities that restore, mimic, and/or enhance nature and natural systems and support flood risk mitigation as well as economic, environmental, and social resilience efforts.



AFTER: EASTERN MANGROVE PARK (2017) - SANTA ROSA, HONOLULU, HAWAII

RIVER  
COASTAL  
STORM SEWER

SHORT-TERM  
(ONGOING-5 YRS)  
TO  
LONG-TERM  
(10-20 YRS+)

### FLOOD RESILIENT RECONSTRUCTION



Reconstructing existing homes in the same location using flood resistant design techniques, such as elevation of the first floor and critical utility systems.



RECONSTRUCTION OF FLOOD-DAMAGED HOMES - NEW ORLEANS, LA

RIVER  
COASTAL  
STORM SEWER

MID-TERM  
(6-10 YRS)

## How to learn more:

- New webpage to host information:

[phila.gov/programs/eastwick-from-recovery-to-resilience/eastwick-flood-resilience-strategy/](https://phila.gov/programs/eastwick-from-recovery-to-resilience/eastwick-flood-resilience-strategy/)

- Upcoming: “Chat & Chew” with the Flood Mitigation Council of Eastwick
- Upcoming: Eastwick Community Day!

## Actions:



Define a comprehensive and feasible **suite of flood resilience measures** – *in progress*



Develop a **decision-making framework** to prioritize and select flood resilience measures.

Deliver and Sustain Transformation Initiatives

Strengthen Partnership and Collaboration

Create a Shared Understanding of the Issues + Opportunities

Co-Develop Actions that Build a Resilient Future

## Actions:



Publish an **Implementation Roadmap** with concept designs and recommendations.



Develop a **funding application** for priority flood resilience measure.

**Deliver and Sustain Transformation Initiatives**

**Strengthen Partnership and Collaboration**

**Create a Shared Understanding of the Issues + Opportunities**

**Co-Develop Actions that Build a Resilient Future**



# Interim Flood Barriers (HESCO)

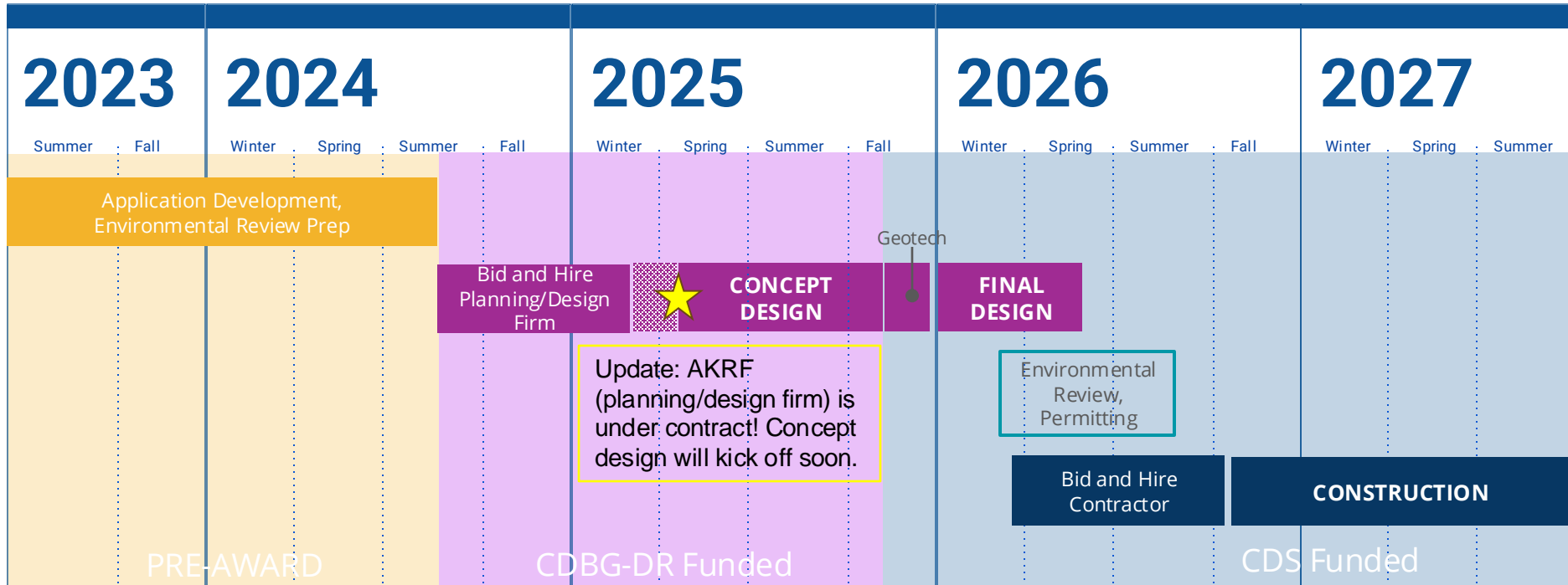
- An interim solution using HESCO Floodline barriers
- Anticipated cost: \$2,203,069. Funded by:
  - Congressional Delegated Spending – Pre-disaster Mitigation through Congresswoman Scanlon (\$1,383,069)
  - CDBG-DR Program (\$820,000)
- Next steps:
  - Refined flood modeling
  - 30% Design
  - Environmental Review and permitting prep

*(CDBG-DR = Community Development Block Grant – Disaster Recovery)*



# HESCO Barrier *Tentative* Timeline

Last updated: March 27, 2025





# Transportation Updates

# Office of Multimodal Planning Updates

- **Island Avenue** (Elmwood Ave to Suffolk Ave)
  - Improvements include safer pedestrian crossings, lighting and signal upgrades, shared trail for bikes and pedestrians
  - Work is being completed in multiple phases to keep traffic moving along the corridor
  - Ongoing Coordination with SEPTA for construction of the trolley stations
  - Construction will likely continue into Spring 2026

# Office of Multimodal Planning Updates

- **84<sup>th</sup> Street** (Lindbergh Blvd to Bartram Ave)
  - Coordinating with PennDOT on future traffic safety project
  - Coordinating with OOS Flood Resilience Strategy assessing opportunities on 84<sup>th</sup> St
- **Repaving season starting**
  - [streetsmartphl.phila.gov](https://streetsmartphl.phila.gov) for paving updates

# Coming soon: Lindbergh Blvd (58<sup>th</sup>-84<sup>th</sup>)

- Lindbergh Blvd is on the high injury network, is important bike connection across SW Philadelphia
- Adding or upgrading bike lanes along the corridor
- New road layout between Eastwick Ave and 58<sup>th</sup> Street to discourage aggressive driving
- Construction happening Fall 2025 – Spring 2026

## Existing condition

70th and Lindbergh Boulevard, looking eastbound



## New condition

58th-60th Streets



60th Street - Eastwick Avenue



Eastwick Avenue - 84th Street



### Same:

- Preserved parking lane from 58th-65th Streets
- Two travel lanes in each direction from 65th-84th Streets

### Improved for Safety:

- Shorter pedestrian crossing in front of moving vehicle lanes
- Buffer separated bicycle lane on each side of the street the full length from 58th-84th Streets
- One travel lane in each direction from 58th-65th Streets

# Trail Updates

- Meeting on Thursday April 3<sup>rd</sup> at 6:30pm
- Cibotti Recreation Center
- Focusing on trail segment between Island Ave and Eastwick Recreation Center
- Questions? Email [trails@phila.gov](mailto:trails@phila.gov)

## PUBLIC MEETING

### Cobbs Creek - Eastwick Trail Project Update

**Thursday April 3, 2025**  
**6:30 - 8:00 PM**



Cobbs Creek Trail Connection between Eastwick Park & Island Ave.



Join us in person at the:  
Cibotti Recreation Center  
2500 S 77th Street  
Philadelphia, PA 19153

Accessible by:  
Bus Routes: 108, 409  
On-Street Parking  
available



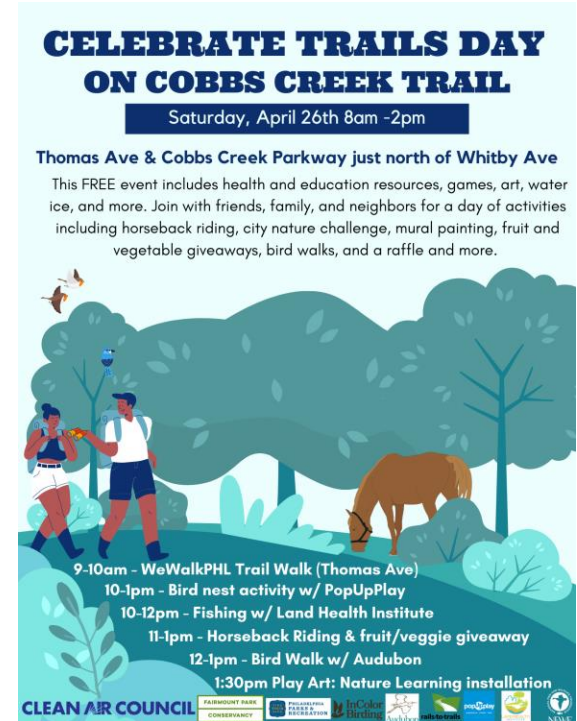
For more information, contact: [trails@phila.gov](mailto:trails@phila.gov)





# Celebrate Trails Day

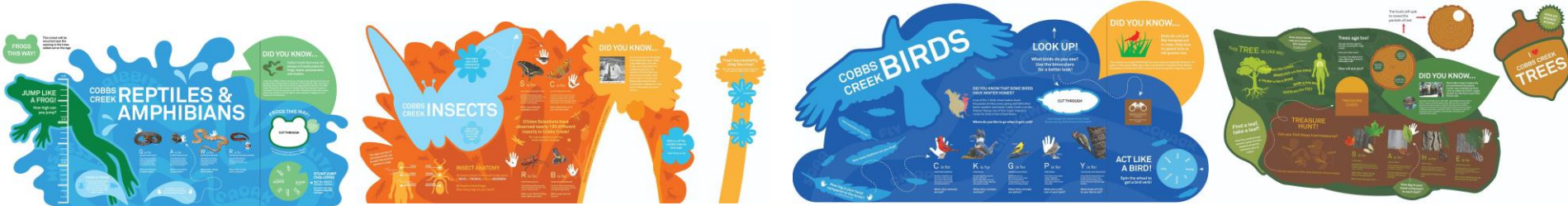
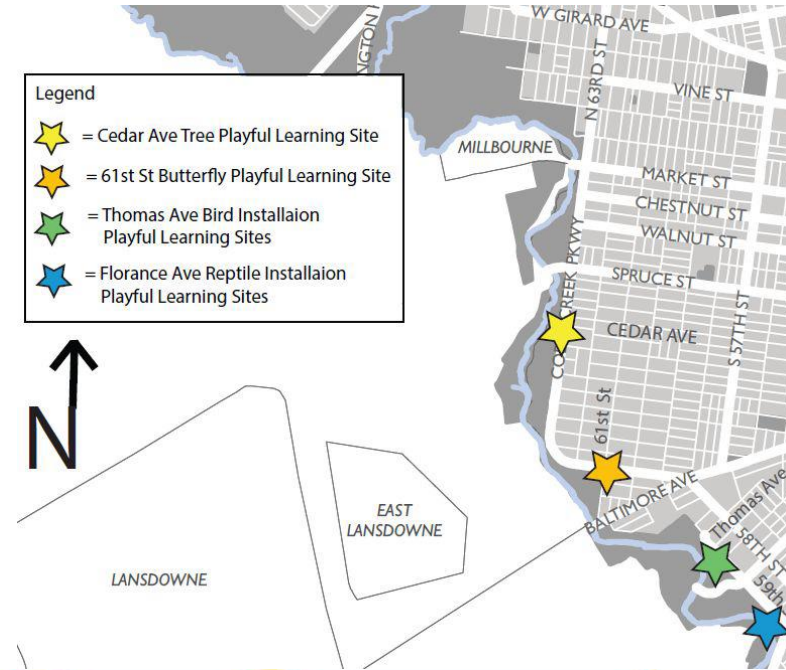
- Saturday April 26th 2025 10am -2pm
- Thomas Ave and Cobbs Creek Parkway
- Event includes
  - Trail walk
  - Bird next and wing build activity
  - Fishing
  - Horseback riding
  - Fruit and vegetable giveaway
  - Birdwalk
  - Kaboom! Play Art Nature Learning ribbon cutting





# Celebrate Trails Day

- This project supports child development and literacy skills by creating play and learning spaces at entrances to Cobbs Creek Park.
- Project will transform four park entrances to include mural art on the paved trail and new areas for children and families to learn and play together.





# Upcoming Events

# John Heinz

- New Spring calendar!
- Activities for all ages!
- Paid Summer fellowship



## ***Paid Summer Opportunity***

***@ John Heinz National Wildlife Refuge at Tinicum***



Learn how to support your community through local conservation work!

Local candidates are encouraged to apply today!



### **AWE Watershed Fellow**

This position will lead local environmental education programs for a variety of audiences, leading guided walks for public audiences or summer camp groups, designing flyers and providing social media content, and assisting in operation of a visitor center. Fellow will also co-design and implement a capstone project. Paid travel for orientation. Housing available.

**Length:** 12 weeks (40 hrs/week)  
**Benefits:** \$16.25/hour

**Apply:** <https://forms.office.com/g/wRR4MqZlgy>  
**Contact:** [wingyi\\_kung@fws.gov](mailto:wingyi_kung@fws.gov)



**@JohnHeinzNWR**



# Eastwick Community Day

- Saturday, June 7th
- Eastwick Recreation Center
- Planning committee meeting soon!





# Q&A



City of  
**Philadelphia**