



NOBLE ST OVER 13TH ST

Project Fact Sheet

December 2024

Project Overview:

Built in 1892, the Noble Street over 13th Street bridge is located between Broad and 12th Streets. It carries Noble Street over 13th Street. Current Bridge has 6 bays. The northern 3 bays belong to Streets Department and the southern 3 bays belong to Philadelphia Parks & Recreation. The northern 1st bay carries Noble St. Due to portions of the steel beams being deficient and unable to safely carry traffic loads, the bridge (carries Noble St) has been closed since August 2024. This project will replace the superstructures (northern two bays) to extend its service life.

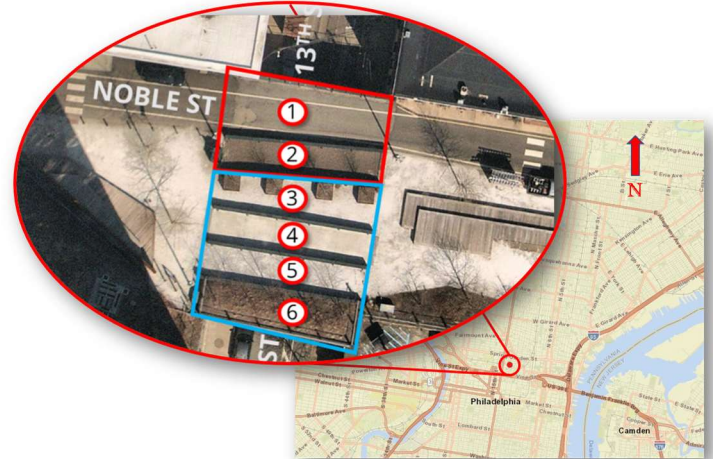
Bridge Background:

- 54' long single span riveted steel half-thru girder structure.
- The width of the bridge varies between 18' to 21' – 3".
- The bridge has no sidewalks.
- An adjacent park area serves as the pedestrian crossing at this location.

Planned Improvements:

- Remove Existing Superstructure from 1st and 2nd bays.
- Construct a multi steel girder bridge composite with a new reinforced concrete deck.
- Increase clearance over 13th Street.
- New street lighting for the bridge area.
- Adding and renewing pavement markings on Noble st between Broad and 12th Streets
- Safety improvements including narrowing roadway, crashworthy barriers, sidewalks

Site Map:



What To Expect:

- The bridge will remain closed to all users until project completion
- Two-way local traffic will be permitted on Noble St approaching the bridge from Broad St and from 12th St.
- Vehicular traffic detour will be posted during construction.
- Regular updates about the project and upcoming meetings.

Anticipated Schedule

Final Design Complete	Spring 2025
Construction Begins	Summer 2025
Construction Complete	Fall 2026

Contact:

For more information on the Noble over 13th Street bridge project, please email us at bridgeunit@phila.gov.