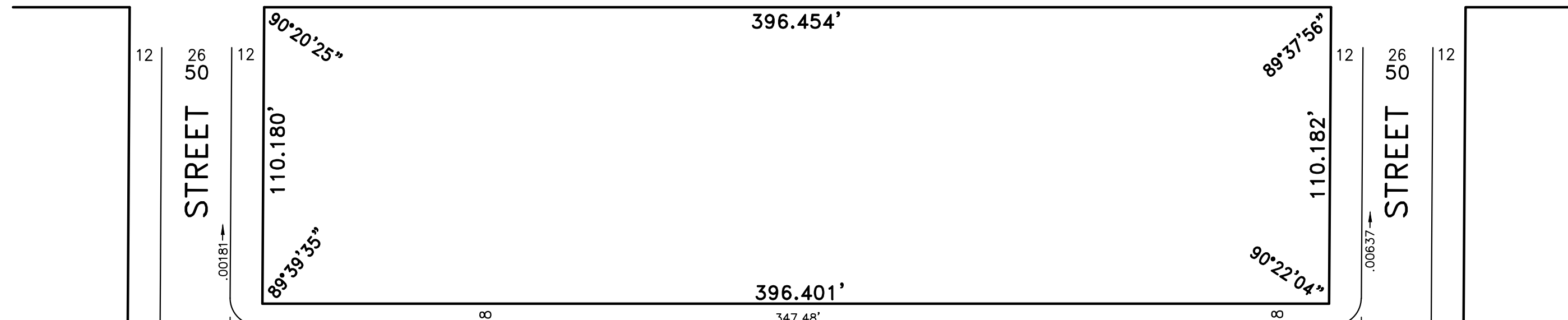
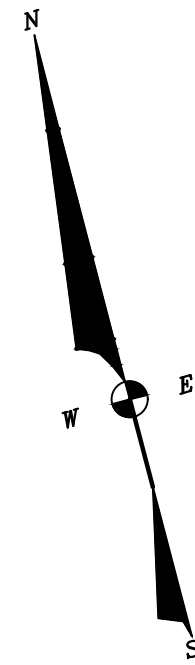


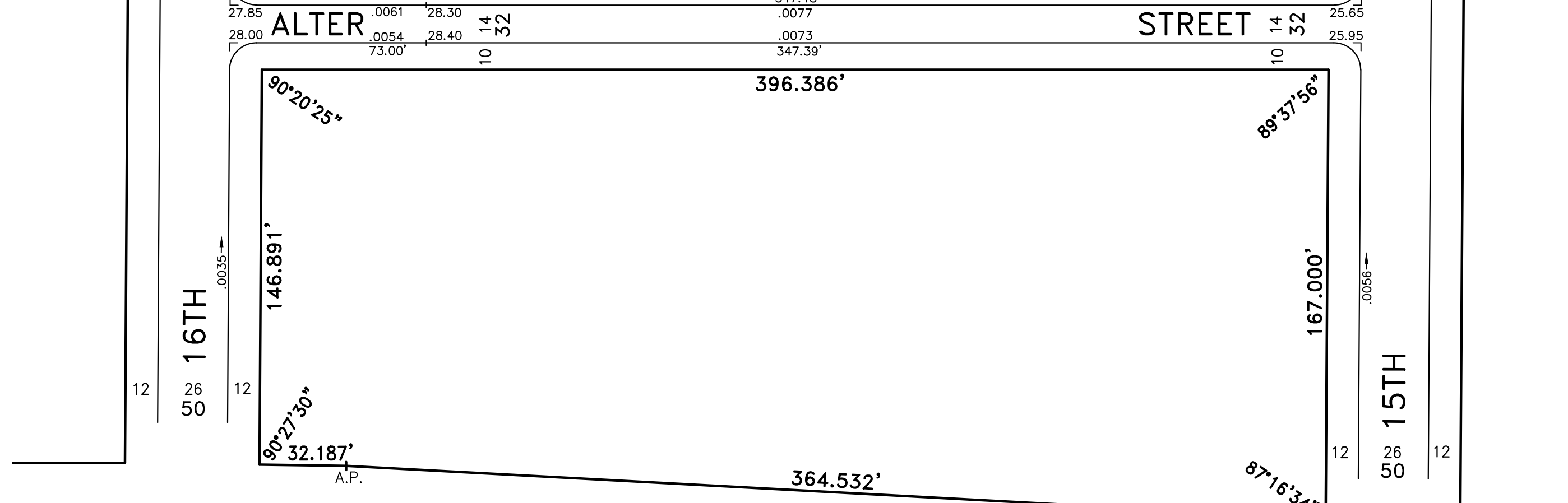


WASHINGTON AVENUE



ALTER STREET

15TH STREET



ELLSWORTH STREET

MOLE STREET

PLAN
 REVISING THE LINES AND GRADES ON A PORTION
 OF CITY PLAN No. 15-S BY PLACING ON THE CITY
 PLAN **ALTER STREET** FROM **FIFTEENTH STREET** TO
SIXTEENTH STREET IN ORDER TO CONFORM MORE
 CLOSELY WITH EXISTING CONDITIONS.

36TH WARD
 PHILADELPHIA
 (BILL NO. 230772)
 AUTHORIZED BY ORDINANCE OF COUNCIL
 APPROVED ----- DECEMBER 20, 2023
 SCALE 1" = 40'

 CHRISTIAN PETROWSKY, P.L.S.
 SURVEYOR & REGULATOR
 2ND SURVEY DISTRICT

CONFIRMED BY BOARD OF SURVEYORS
 -----, 20__

 VADIM FLEYSH, P.E.
 CHIEF ENGINEER