

**Forman Sign Company
10447 Drummond Road
Philadelphia, PA 19154
215-827-6500
215-827-6501 FAX**

April 3, 2024

Philadelphia Art Commission
One Parkway
1515 Arch Street, 13th Floor
Philadelphia, PA 19102
Attn: Alex Smith
215-683-2095

Re: Pure Green
1124 Walnut St.
Revised

Proposed: One 28"x15'4" single-faced sign. Painted aluminum face and sides. Copy area only internally illuminated with white LEDs. "Juice + Smoothies" copy routed out of the face panel and filled with push-thru white acrylic. "(logo) pure green" channel letters constructed of black aluminum sides and clear polycarbonate backs, illuminated (face- and halo-lit) with white LEDs, and white acrylic face panels with translucent vinyl overlays on the logo and "green." Overall sign depth 8-7/8"; letters to project 4-1/2" beyond face of brick column.

The existing single-faced wall sign will be removed. The Art Commission approved the sign cabinet on file #75-95 on April 24, 1995, though we can't find record of the existing Young's Florist face panel having been reviewed.

Thank you,



Sharon Brandt

Pure Green – 1124 Walnut St.

These photos have not been manipulated in any way on a computer



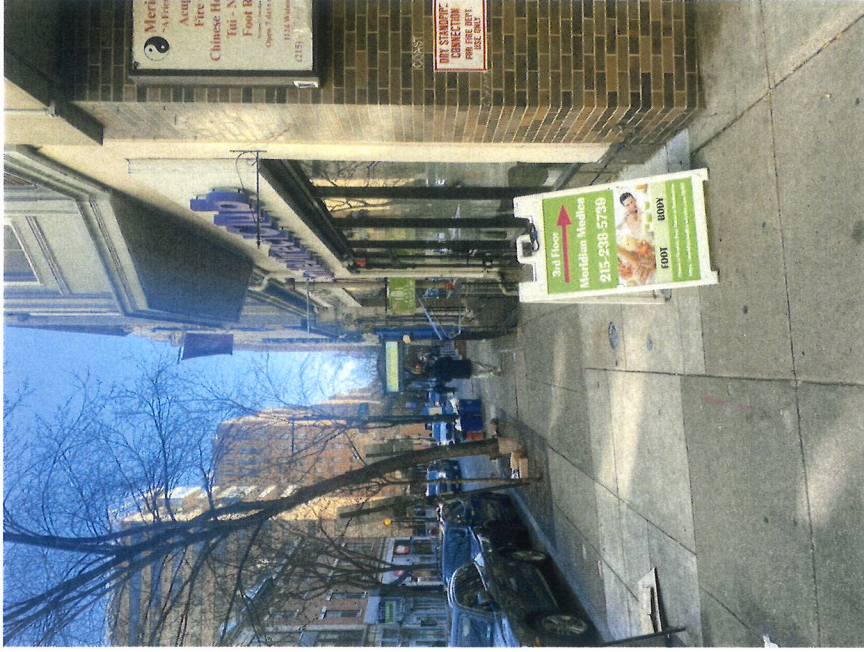
Straight on



Building to left



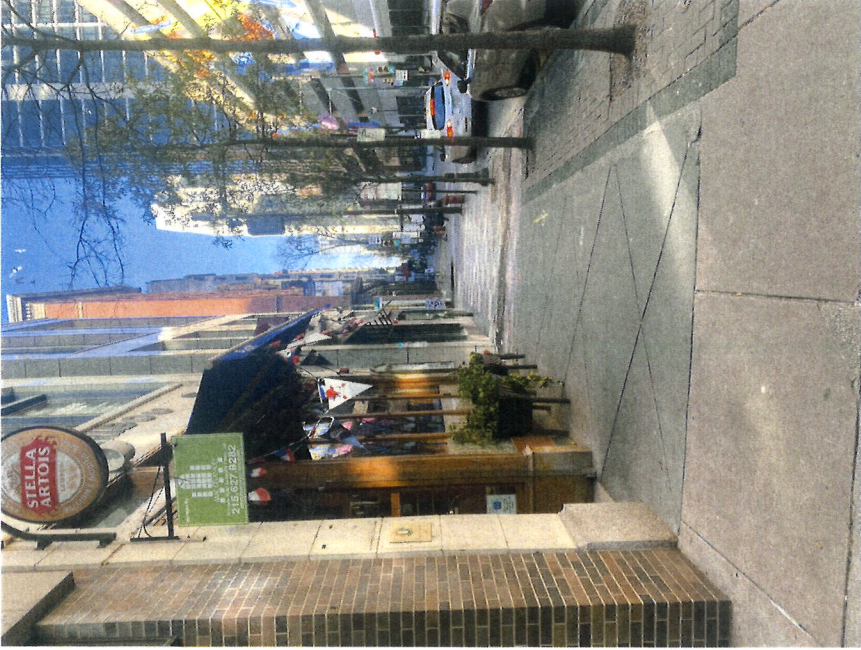
Building to right



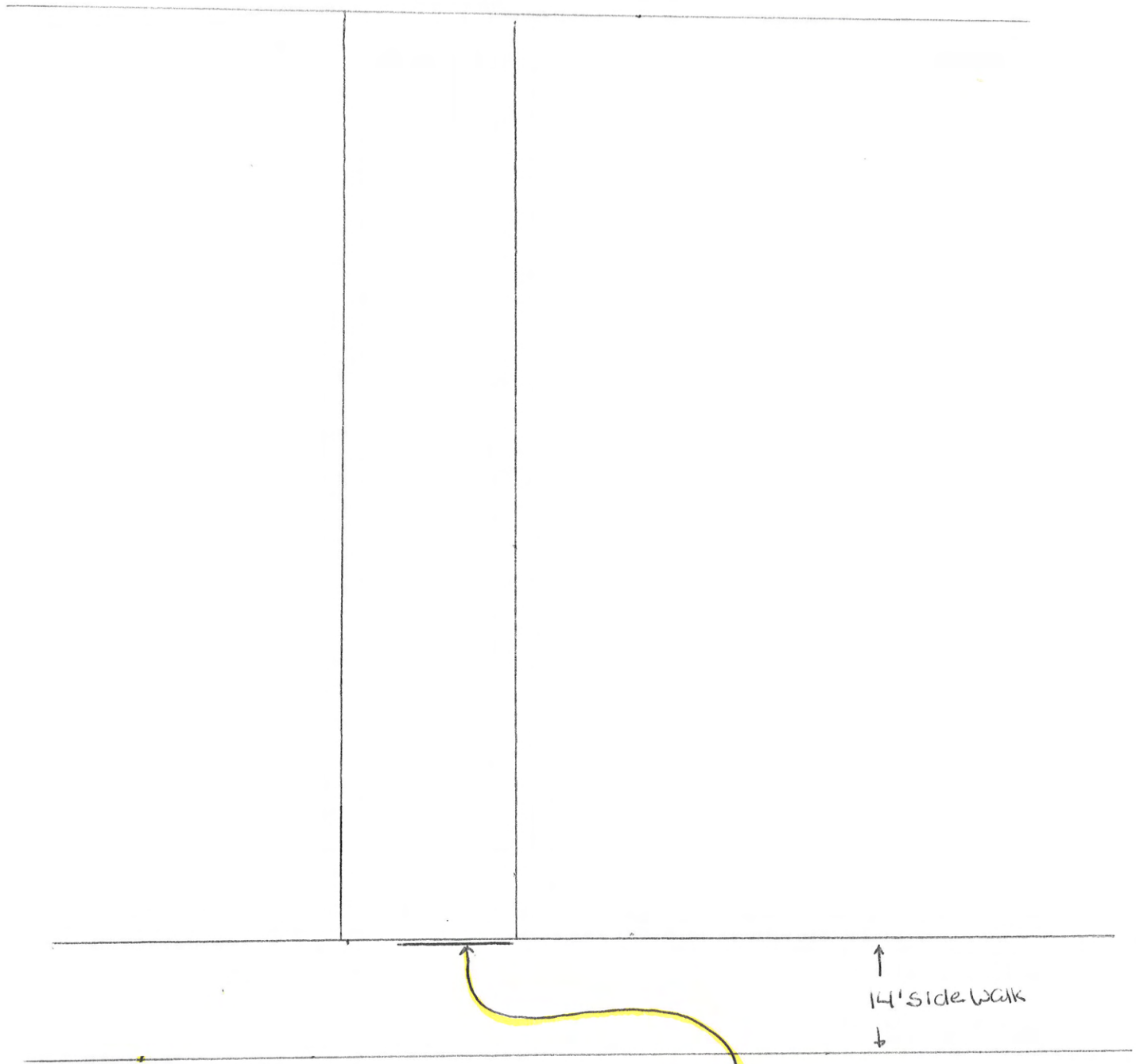
Looking down Walnut St. to left



Looking across Walnut St.



Looking down Walnut St. to right



WALNUT ST.

28'' x 15'4'' illum
wall sign

North
↓

N.T.S.

PHOTO RENDERINGS



Day View



Night View



EXISTING



LOCATION: Walnut St. Philadelphia, PA

SCALE: as noted

PG: 1 of 3

DATE:	12/28/23	3/20/24
	01/11/24	4/04/24
	2/16/24	
	2/20/24	
	2/28/24	

FILE: Pure Green Philadelphia PA Walnut St signage 4-4-24 (axz) (b) (1)

DRAWN BY: ebf/nm

215-827-6500 • 215-827-6501 fax
 howarde@formansign.com
 ©2007 Forman Sign Company. All rights reserved. No part of this document or the related files may be reproduced or transmitted in any form, by any means (electronic, copying, or otherwise) without the prior written permission of Forman Sign Company.

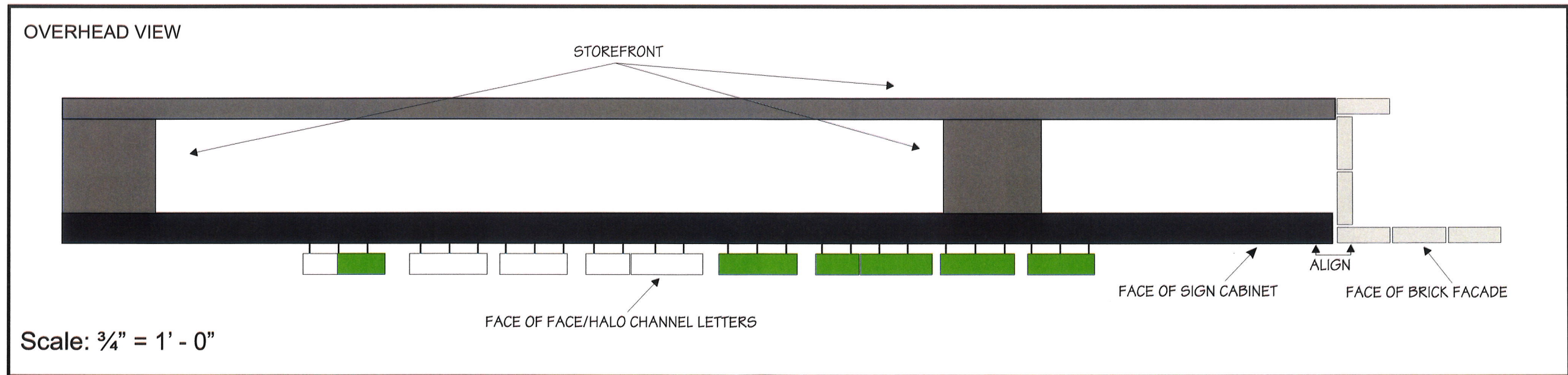


STOREFRONT SIGNAGE

- 1) Set of face/halo lit channel letters mounted on a metal background
Routed face with push thru copy "juice + smoothies"

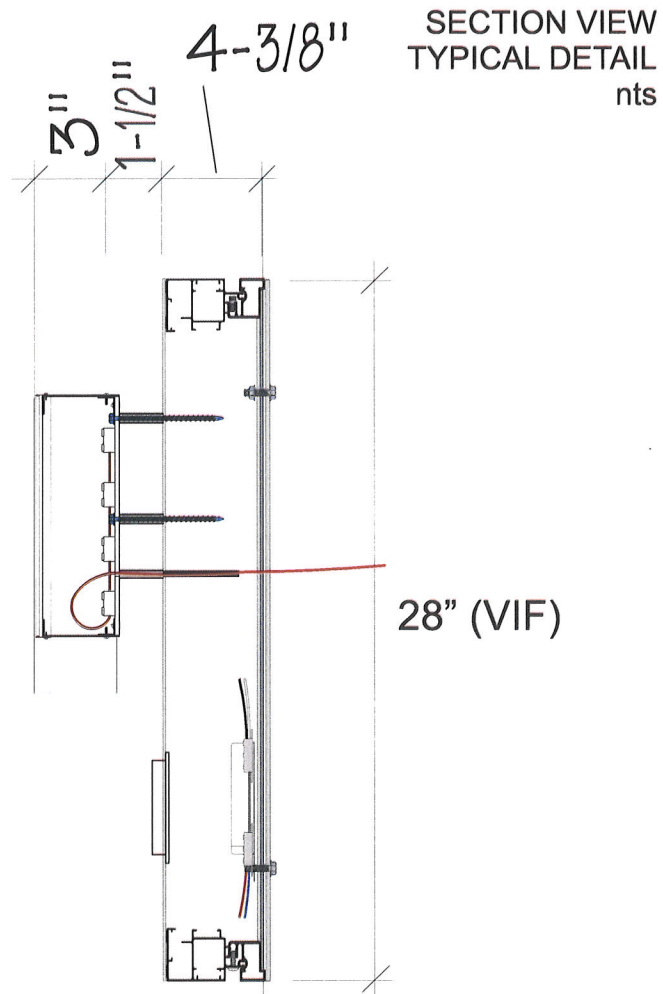


Face of cabinet not to extend past face of brick



STOREFRONT SIGNAGE

- 1) Trim Cap - BLACK
w/ Low Profile Pan Head Screw
Painted to Match trim cap
- 2) Clip w/ Screw
- 3) 3/16" LEXAN lens - CLEAR
- 4) Case (w/ 1/4" weepholes) - BLACK
- 5) Face - 3/16" WHITE Acrylic w/
translucent vinyl to match PMS 368c
- 6) LEDs - WHITE
- 7) 3/8" x5" rust resistant lag bolts
w/ PVC spacers
attaching letter to .125" alum face
- 8) Power Supply
w/ Class II low voltage wiring
& w/ Cut-off Switch
for Primary Service
- 9) Extruded alum case w/ .125"
alum "bleed" style routed face
w/ Power Supply w/ Cut-off Switch
for Primary Service
- 10) 3/4" Push Thru Acrylic - WHITE
- 11) Attaching hardware to be determined
installation survey required



DETAIL VIEW



ELECTRICAL REQUIREMENTS

QTY.	TRANS.	AMPS
1	60W	.8
TOTAL AMPS		.8

CIRCUITS REQ'D 1) 20a
VOLTS 120/277

 **ALL ELECTRICAL COMPONENTS ARE TO BE UL APPROVED**
E56954



LOCATION: Walnut St. Philadelphia, PA

SCALE: as noted

PG: 3 of 3

DATE:	12/28/23	3/20/24
	01/11/24	4/04/24
	2/16/24	
	2/20/24	
	2/28/24	

215-827-6500 • 215-827-6501 fax
howardc@formansign.com
©2007 forman sign company. All rights reserved. No part of this document or the related files may be reproduced or transmitted in any form, by any means (electronic, copying, or otherwise) without the prior written permission of forman sign company.



10447 Drummond Rd, Philadelphia, PA 19154

The new sign will be mounted flush to the face of the existing brick column, similar to the existing sign.

