

**Forman Sign Company**  
**10447 Drummond Road**  
**Philadelphia, PA 19154**  
**215-827-6500**  
**215-827-6501 FAX**

April 12, 2024

Philadelphia Art Commission  
One Parkway  
1515 Arch Street, 13<sup>th</sup> Floor  
Philadelphia, PA 19102  
Attn: Alex Smith  
215-683-2095

Re: Avita Pharmacy  
1226 Chestnut St.

Proposed: One set 36.92"x103.04" channel letters. Aluminum backs and sides, white LED illumination, and white acrylic face panels with translucent vinyl overlays on the logo (colors as per drawing). Overall depth 5".

Thank you,



Sharon Brandt

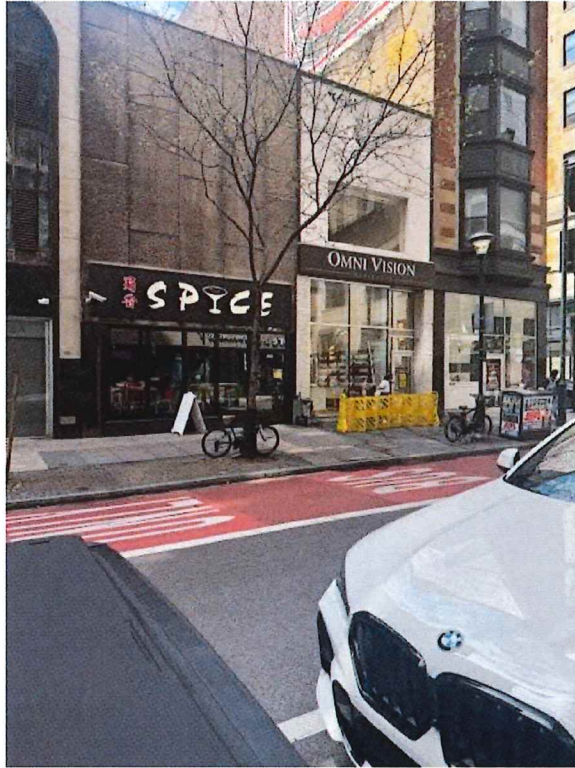
**Avita Pharmacy – 1226 Chestnut St.**  
**These photos have not been manipulated in any way on a computer**



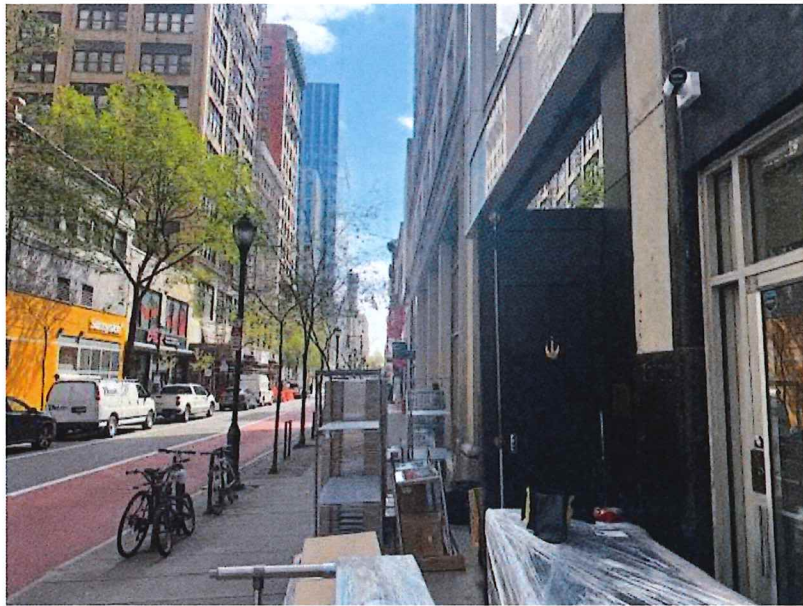
Straight on



Building to left



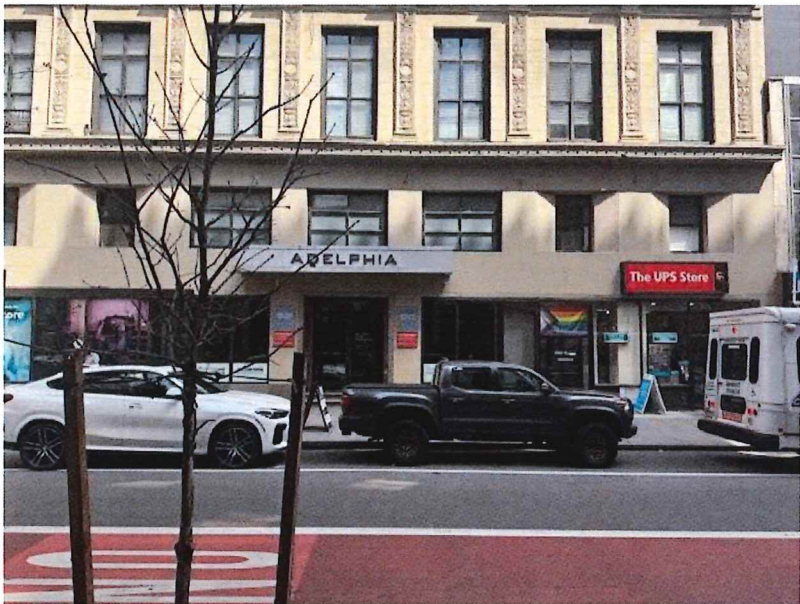
Building to right



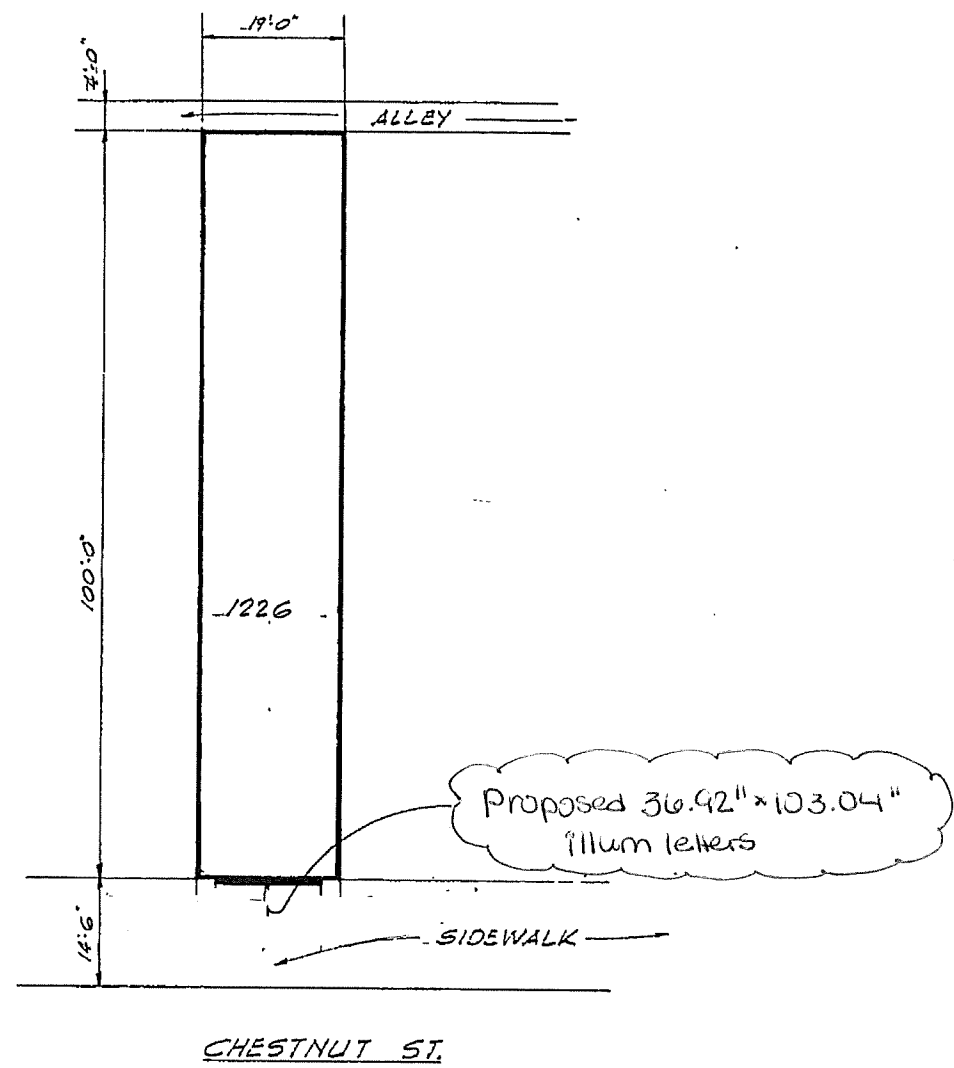
Looking down street to left



Looking down street to right



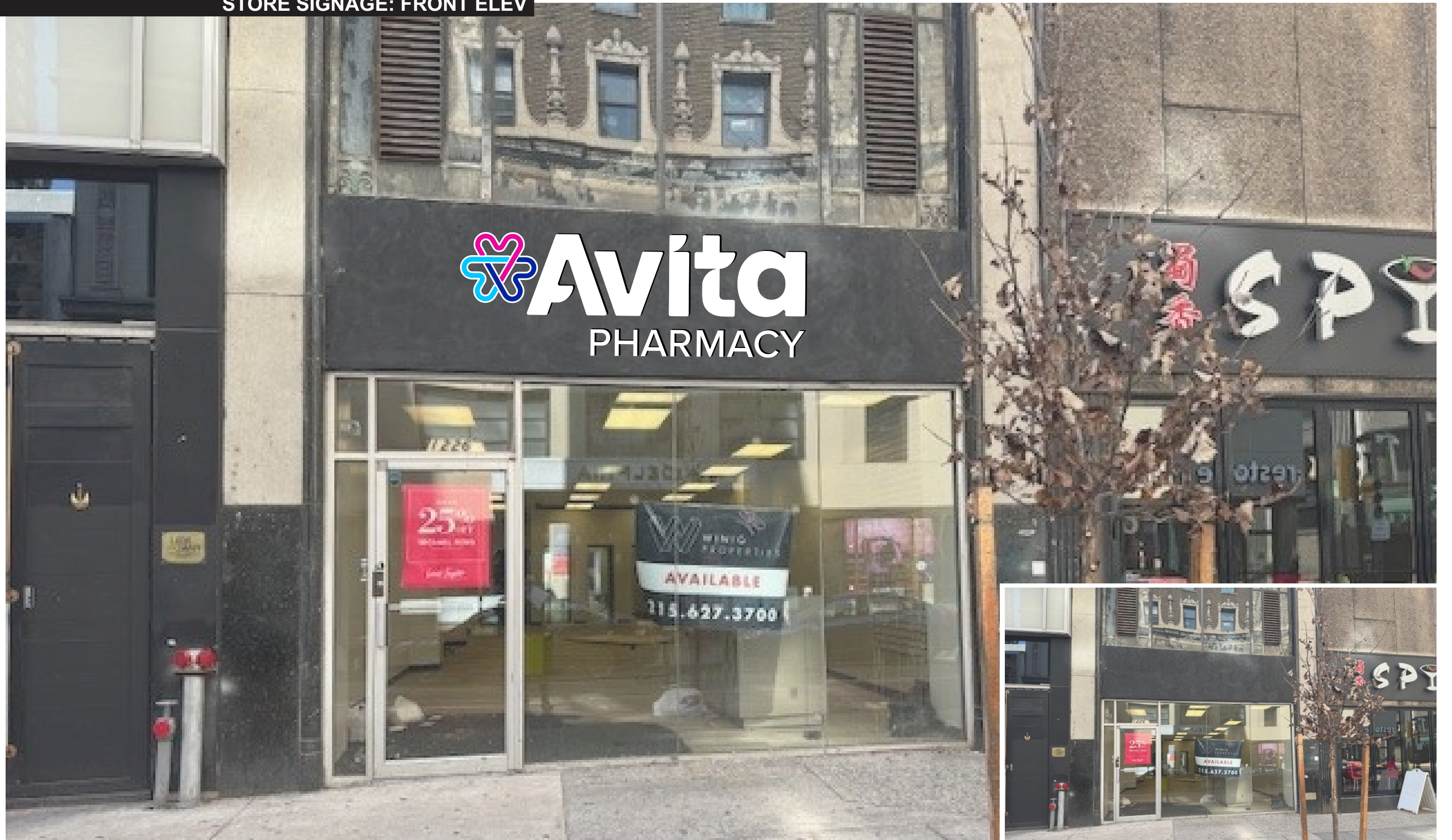
Looking across the street



N  
↓

NFS

STORE SIGNAGE: FRONT ELEV



**AVITA PHARMACY**

LOCATION: 1226 Chestnut Street  
Philadelphia, PA 19107

SCALE: as noted

PG: 1 of 3

DATE: 04/04/24

FILE: Avita Pharmacy\_Phila\_PA\_sign package

DRAWN BY  
nm

215-827-6500 • 215-827-6501 fax  
martyj@formansign.com  
©2007 Forman sign company. All rights reserved. No part of this document or the related files may be reproduced or transmitted in any form, by any means (electronic, copying, or otherwise) without the prior written permission of forman sign company.

**formansigns**  
10447 Drummond Rd, Philadelphia, PA 19154



**AVITA PHARMACY**

LOCATION: 1226 Chestnut Street  
Philadelphia, PA 19107

SCALE: as noted

PG: 2 of 3

DATE: 04/04/24

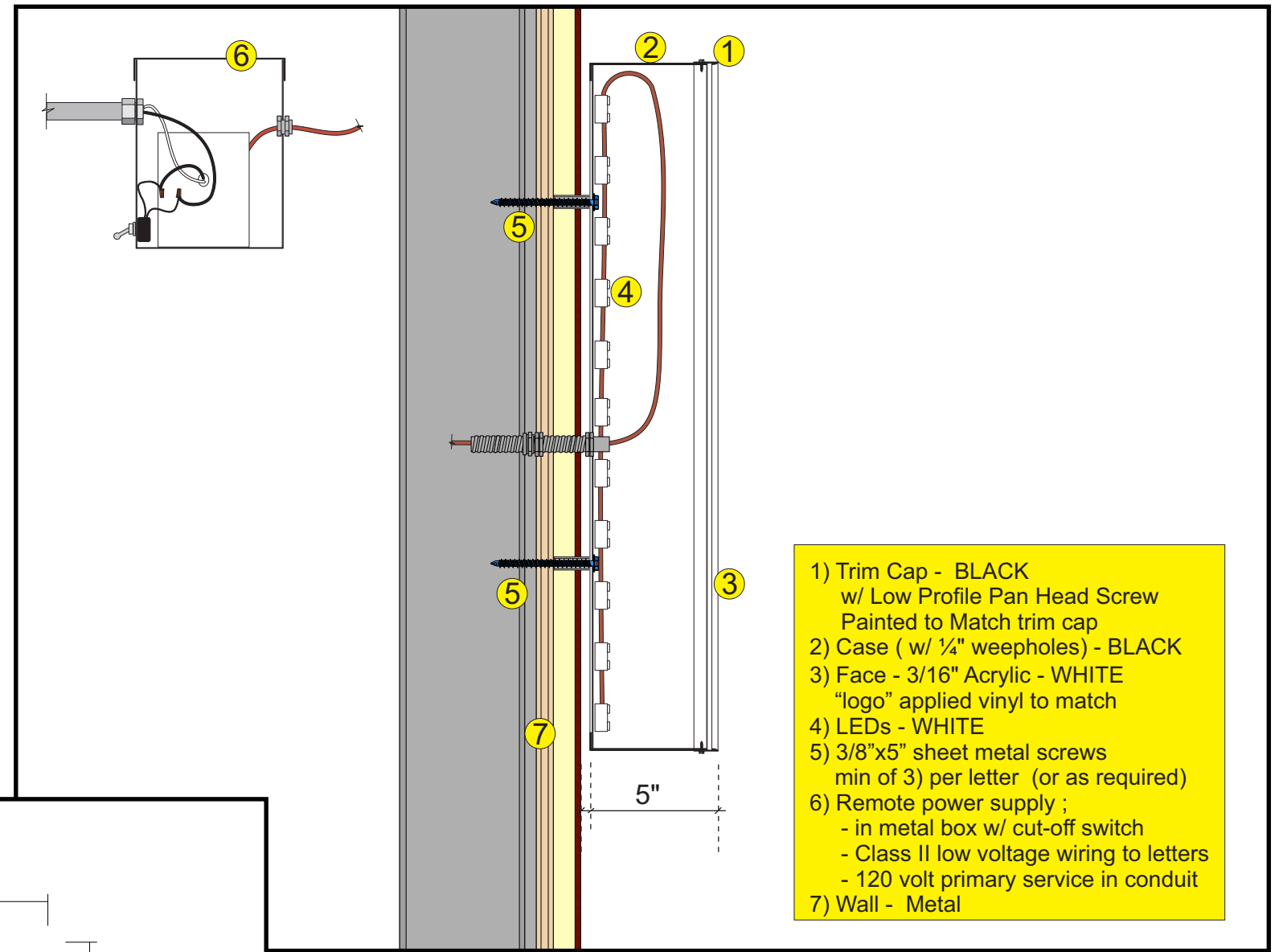
FILE: Avita Pharmacy\_Phila\_PA\_sign package

DRAWN BY  
nm

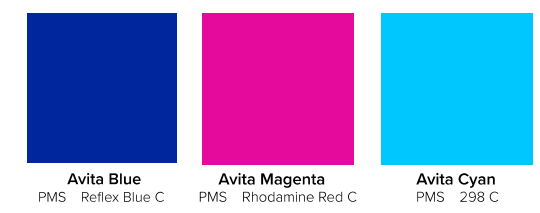
215-827-6500 • 215-827-6501 fax  
[martyj@formansign.com](mailto:martyj@formansign.com)  
 ©2007 Forman sign company. All rights reserved. No part of this document or the related files may be reproduced or transmitted in any form, by any means (electronic, copying, or otherwise) without the prior written permission of forman sign company.

**formansigns**  
 10447 Drummond Rd, Philadelphia, PA 19154

**STORE SIGNAGE: DETAIL VIEW**



- 1) Trim Cap - BLACK  
w/ Low Profile Pan Head Screw  
Painted to Match trim cap
- 2) Case ( w/ 1/4" weepholes) - BLACK
- 3) Face - 3/16" Acrylic - WHITE  
"logo" applied vinyl to match
- 4) LEDs - WHITE
- 5) 3/8"x5" sheet metal screws  
min of 3) per letter (or as required)
- 6) Remote power supply ;  
- in metal box w/ cut-off switch  
- Class II low voltage wiring to letters  
- 120 volt primary service in conduit
- 7) Wall - Metal



DETAIL VIEW  
SCALE: 3/4" = 1'-0"

FACE LIT CHANNEL LETTERS