

# PROJECT SCHEDULE

SIGN TYPE/ DESCRIPTION:	QTY.:	PG.
A. ILLUM. CHANNEL LETTERS ON RACEWAY	ONE (1)	3
B. ILLUM. D/F BLADE SIGN, WINDOWS MULLION MOUNTED.	ONE (1)	5

PROJECT:

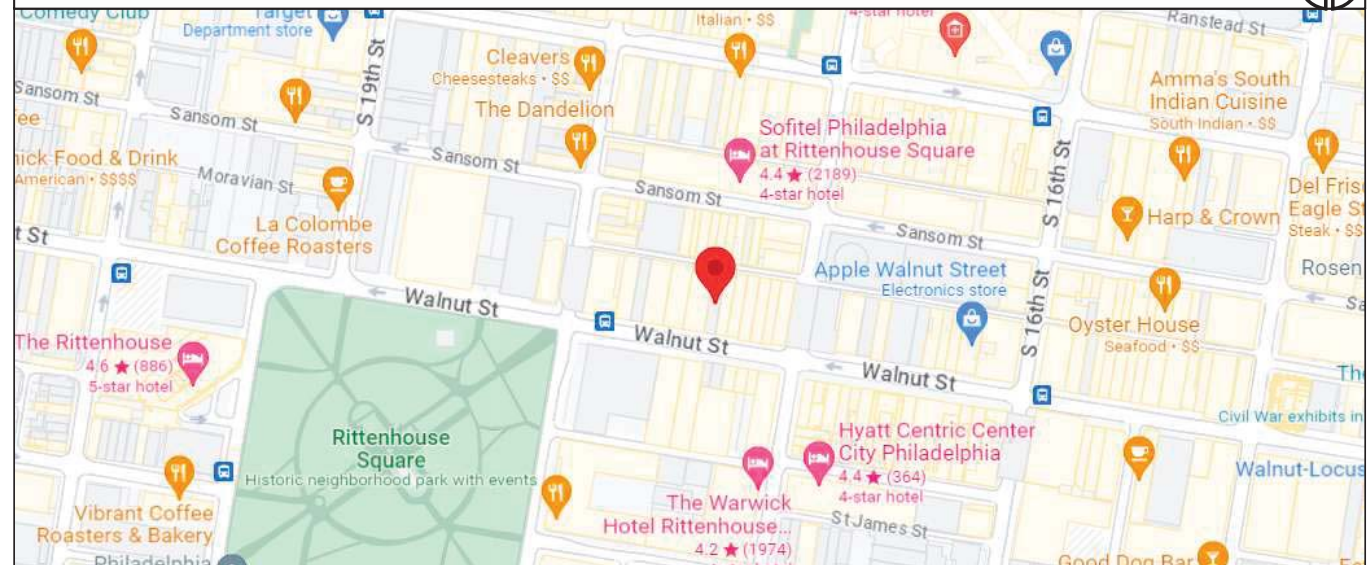


1713 WALNUT STREET  
PHILADELPHIA, PA

# REVISIONS

#	DATE	DB	NOTES
R1	5/19/2023	BZ	UPDATED SIGN AND ADDED BACKER PANEL.
R2	7/19/2023	BZ	UPDATED NON-ILLUMINATED TO ILLUMINATED ON A BACKER PANEL SIGN.
R3	7/25/2023	BZ	UPDATE AND ADDED BLADE SIGN.
R4	7/26/2023	BZ	UPDATED ELECTRICAL FEED AND REMOVED BLADE SIGN.
R5	7/31/2023	BZ	REVISED SIGN SECTION.
R6	9/21/2023	BZ	UPDATED BLADE SIGN
R7	10/04/2023	JM	R7-PUT CHANNEL LETTERS ON RACEWAY
R8	10/19/2023	BZ	R7-MOVE BLADE SIGN POSITION
R9	11/17/2023	BZ	UPDATED AND RELOCATED BLADE SIGN. ADDED NIGHT VIEW ELEVATION.

# MAP



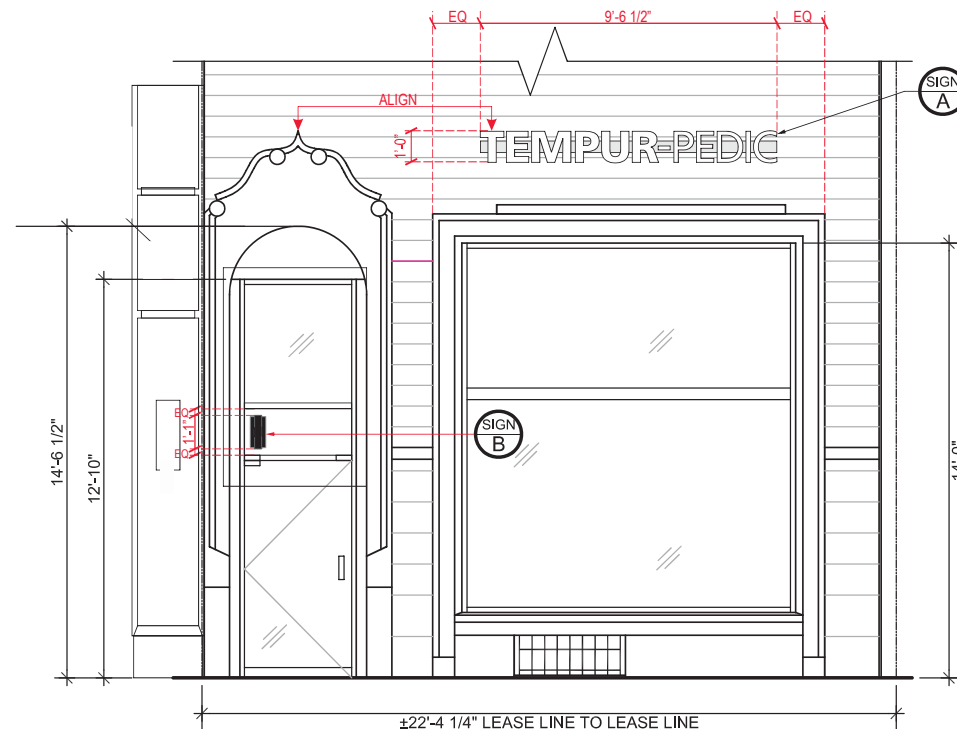
STOREFRONT ELEVATION

1

SCALE: 1/4" = 1'-0"



CHANNEL LETTERS NIGHT VIEW



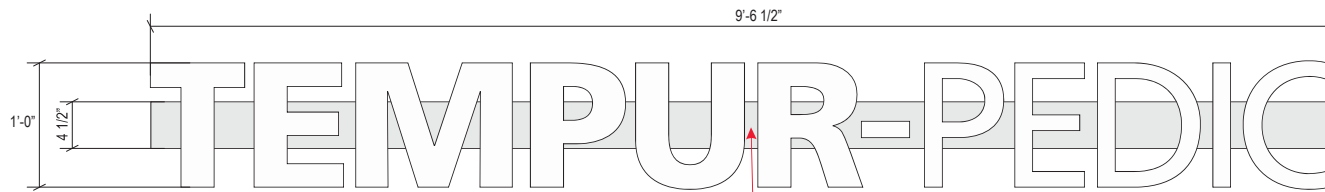
EXISTING CONDITION

ILLUM. FACE-LIT 'TRIMLESS' REMOTE CH LTRS. ON RACEWAY

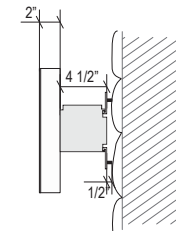
A

SCALE: 1"=1'-0"


QTY: ONE (1)



ONE (1) FEED HOLE TO ELECTRICAL FEED



TYP. FRONT 

TYP. SIDE 



**persōna** | **TRIANGLE**  
SIGNAGE LIGHTING FACILITY SERVICES

11 Azar Court • P.O. Box 24186  
Baltimore, Maryland 21227  
T: 410-247-5300 • F: 410 247-1944

Reproduction in Whole or Part  
Prohibited without Express  
Permission of PersonajTriangle © TSS

CLIENT & LOCATION



1713 WALNUT STREET  
PHILADELPHIA, PA

LEAD NO.  
211765 R9

SM/PM  
J. HORSLEY

REVIEW

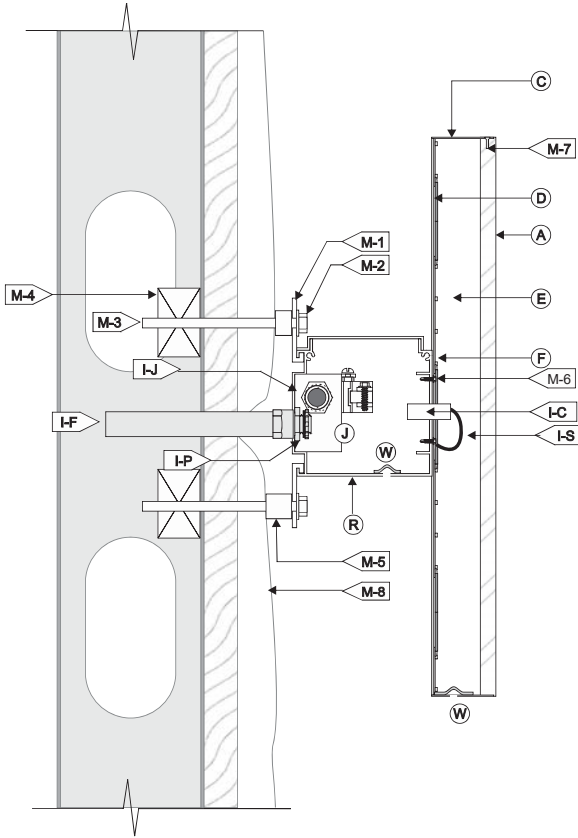
SHEET NO.

DATE  
5/2/2023

ARTIST  
BZ

SEG. NO.

3 of 6



TRIMLESS/SHOULDER MOUNT FACE LIT CHANNEL LETTER / LED ILLUM. / EXTERIOR INSTALL / RACEWAY MOUNTED SCALE: N.T.S.

<b>(A) FACE</b>		<b>(I) WIRING</b>	
MATERIAL:	3/4" THK. 2447 WHITE ACRYLIC, W/ KERF FOR RETURN	I-C	1/2" O.D. TRUE KONEK PVC TUBE
BORDER:	N/A	I-D	DISCONNECT SWITCH (SIDE OF RACEWAY)
VINYL:	N/A	I-F	TO ELECTRICAL FEED
COLOR INFO.:	N/A	I-J	STANDARD JUNCTION BOX. (WATERPROOF)
<b>(C) RETURNS</b>		I-H	W.P. BOX @ DISCONNECT SWITCH
DEPTH:	2"	I-P	LIQUID TIGHT CONNECTOR
MATERIAL:	WHITE	I-S	U.L. APPROVED LOW VOLTAGE CLASS II WIRING
COLOR/FINISH:	SATIN		ALL CONNECTIONS TO BE IN WATERPROOF BOXES
<b>(D) BACKS:</b>		<b>(J) POWER SUPPLY</b>	
MATERIAL:	3MM ACM	TYPE:	LED POWER SUPPLY HOUSE IN RACEWAY
COLOR/FINISH:	WHITE / SATIN	VOLTAGE:	120V
<b>(E) INSIDE OF CAN</b>		<b>(R) RACEWAY</b>	
COLOR:	WHITE	MATERIAL:	4 1/2" X 4 1/2" ALUM. EXTRUSION, TOP ACCESS
<b>(F) ILLUMINATION:</b>		FINISH:	MATCH FASCIA <b>V.I.F.</b>
TYPE:	STANDARD 4000K WHITE LEDS	<b>(M) MOUNTING</b> SEE MOUNTING NOTE.	
<b>ALL WIRES TO BE TERMINATED W/ A MECHANICAL UL LISTED FASTENER</b>		M-1	MOUNTING BARS 2"W. x 1/4" THK. ALUM. WITH
		M-2	3/4" DIA. MOUNTING HOLES.
		M-3	MIN. 3/8" ALLTHREAD WITH NUTS, THRU SPACERS TO
		M-4	BLOCKING, (PROVIDED BY OTHERS)
		M-5	STAND-OFF SPACERS, AS NEEDED
		FINISH:	MOUNTING HARDWARE TO MATCH FASCIA <b>V.I.F.</b>
		M-6	SELF TAPPING SCREWS.
		M-7	FLUSH FITTING COUNTER-SUNK SCREW @ TOP.
		M-8	EXISTING STONE FASCIA SIGN BAND.
		<b>(W) WEEP HOLES:</b> 1/4" DIA. WITH COVER	

<b>120V INSTALL</b>	<ol style="list-style-type: none"> <li>CUSTOMER G.C. TO PROVIDE ADEQUATE WOOD OR MTL. BLOCKING IN CORRELATION W/ FACADE FRAMING AS REQUIRED.</li> <li>INSTALLER IS TO V.I.F. &amp; PROVIDE THE PROPER NON-CORROSIVE MOUNTING HARDWARE TO ENSURE SAFE INSTALLATION.</li> <li>ALL EXTERIOR FACADE PENETRATIONS TO BE WATERTIGHT.</li> <li>INSTALLATION TO MEET CURRENT N.E.C., U.L. &amp; LOCAL CODES. LOCATION OF THE DISCONNECT SWITCH AFTER INSTALLATION SHALL COMPLY WITH ARTICLE 600.6(A) (1) OF THE NATION ELECTRICAL CODE</li> </ol>	<b>ELECTRICAL</b>	<ol style="list-style-type: none"> <li>ALL ELECTRICAL COMPONENTS TO BE U.L. APPROVED.</li> <li>CUSTOMER IS RESPONSIBLE FOR ONE (1) 120v 20a DEDICATED CIRCUIT w/ GROUND PER SIGN TO WITHIN 6' OF SIGN.</li> <li>THIS SIGN IS INTENDED TO BE INSTALLED IN ACCORDING W/ THE REQUIREMENTS OF ARTICLE 600 OF THE NATIONAL ELECTRICAL CODE AND/OR OTHER APPLICABLE LOCAL CODES. THIS INCLUDES PROPER GROUNDING &amp; BONDING OF THE SIGN.</li> </ol>
		<b>FABRICATOR</b>	<ol style="list-style-type: none"> <li>PLACEMENT OF LIGHTING ELEMENTS FOR OPTIMUM ILLUMINATION OF SIGN TO BE DETERMINED IN PRODUCTION.</li> <li>MANUFACTURER &amp; U.L. LABELS TO BE APPLIED &amp; VISIBLE FROM THE GROUND. LOCATED ON THE LAST CHANNEL LETTER OR END OF THE SIGN BOX/FREESTANDING SIGN</li> </ol>

