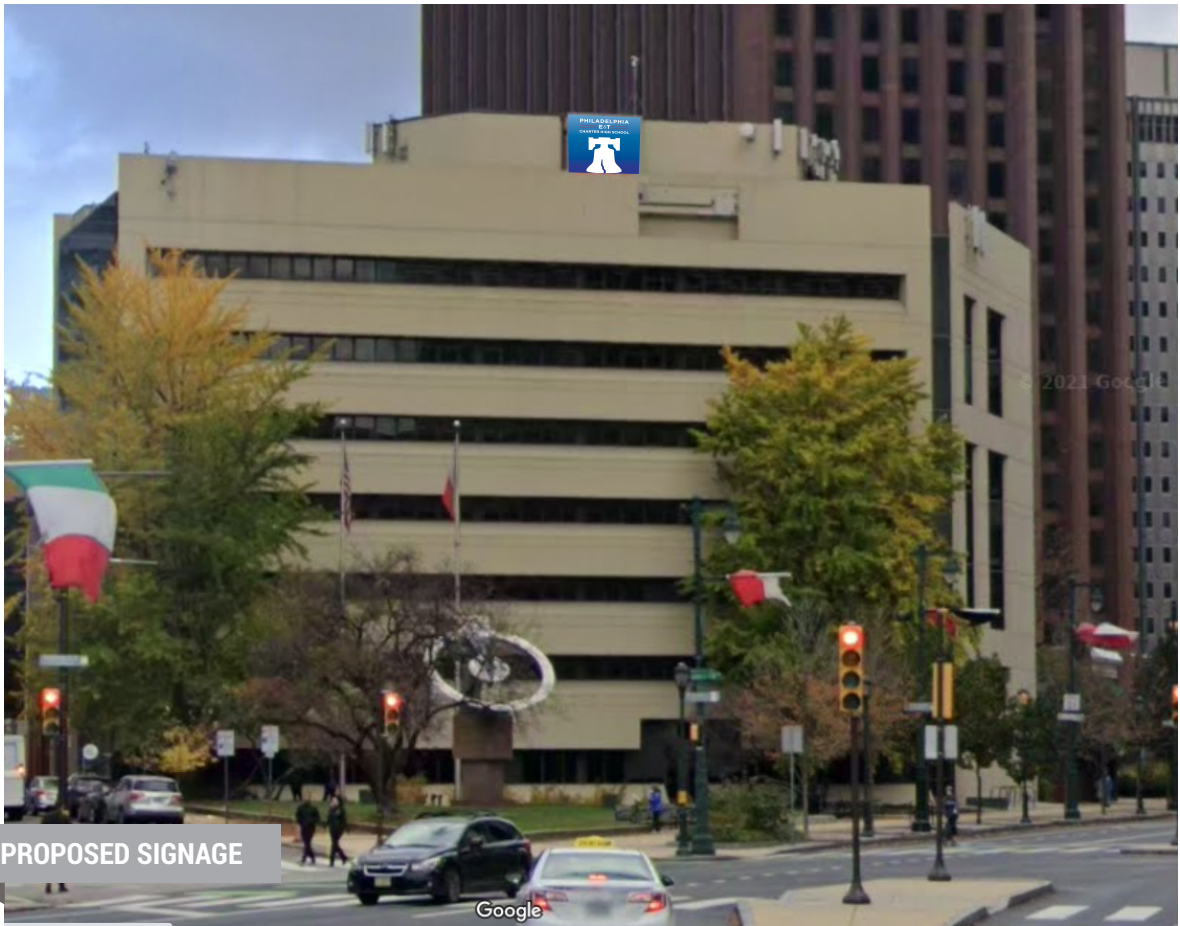


**A** PARTIAL ELEVATION  
SCALE: 3/8"=1'-0"



## PETCHS

1709 Benjamin Franklin Pkwy.  
Philadelphia, PA 19103

**Project: 23-2179-PETC**

Panaflex Cabinet Refurbishment

Qty: 01

### Fabrication Information:

NEW DIGITALLY PRINTED PANAFLEX FACES  
FOR SIGN COMP BLEED FRAME FLEX FACE  
CONSTRUCTION (NO LIFTS ON FACES).

### Installation Information:

REMOVE OLD FACES AND INSTALL NEW FLEX  
FACES AS SHOWN.

NOTE: REPLACING LIKE FOR LIKE.  
PROPOSED DIMENSIONS ARE THE SAME AS  
THE EXISTING DIMENSIONS

EXISTING SIGN IS ILLUMINATED AND  
LIGHTING TO BE UTILIZED

Date / Designer 11.09.23 RP

PETCHSV23-2179-PETC...

THIS DOCUMENT CONTAINS CONFIDENTIAL AND PROPRIETARY INFORMATION  
THAT CANNOT BE REPRODUCED OR DIVULGED, IN WHOLE OR IN PART, WITHOUT  
WRITTEN AUTHORIZATION FROM CITY SIGN SERVICE, INC. © 2023

### Revisions

- R1 11.28.23 RP
- R2 02.06.24 RP
- R3 00.00.00 -
- R4 00.00.00 -
- R5 00.00.00 -



Interior / Exterior  
Sign Manufacturers

424 Caredean Dr.  
Horsham PA, 19044  
T. 215.442.1323  
F. 215.442.1328

Sales: C. Longacre



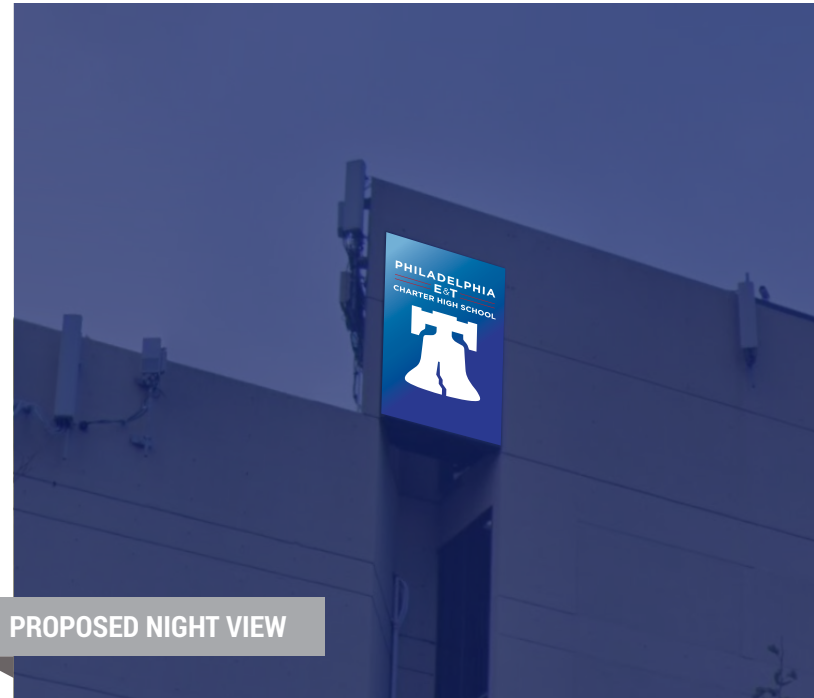




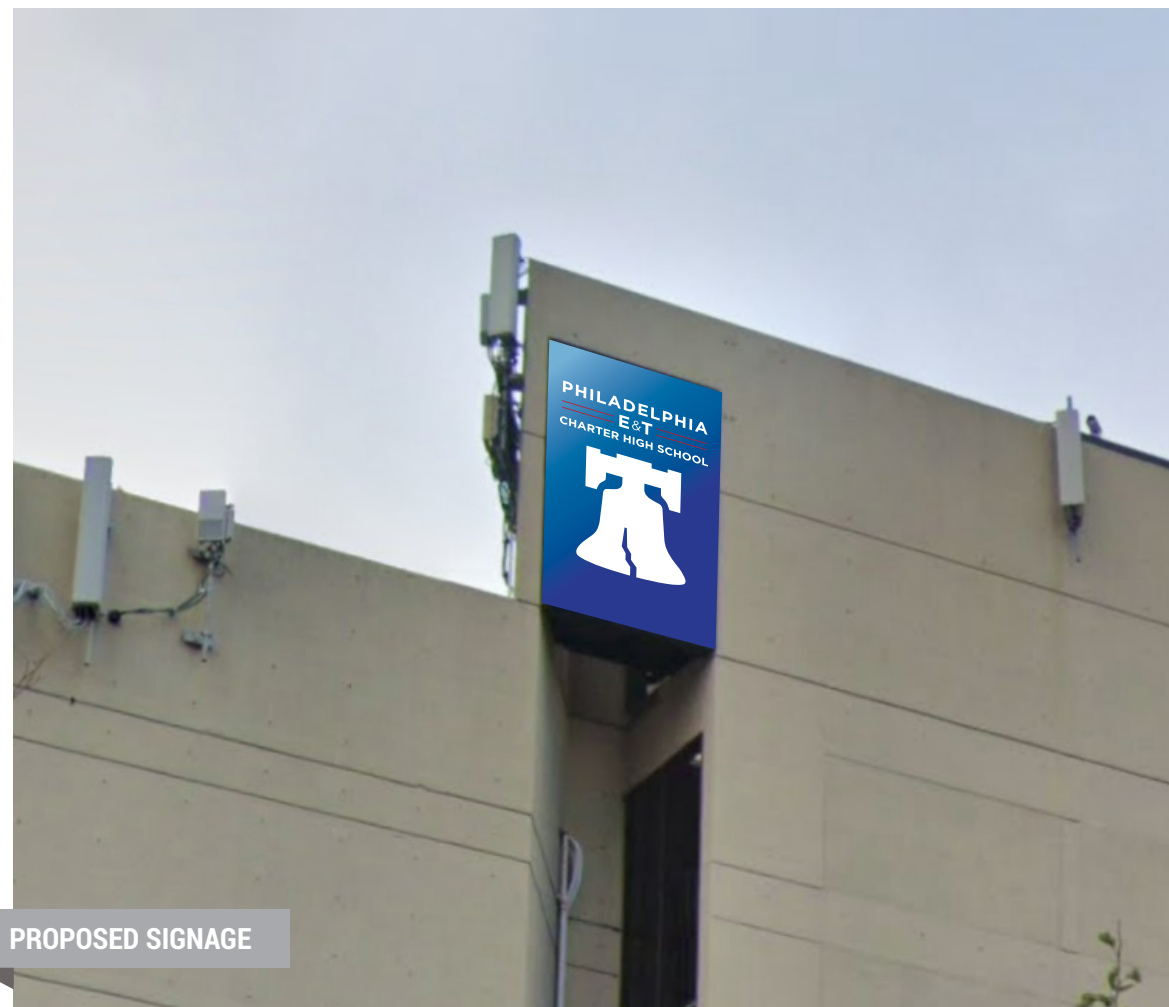
**A** PARTIAL ELEVATION  
SCALE: 3/8"=1'-0"



EXISTING EAST ELEVATION



PROPOSED NIGHT VIEW



PROPOSED SIGNAGE

## PETCHS

1709 Benjamin Franklin Pkwy.  
Philadelphia, PA 19103

**Project: 23-2179-PETC**

Panaflex Cabinet Refurbishment

Qty: 01

### Fabrication Information:

NEW DIGITALLY PRINTED PANAFLEX FACES  
FOR SIGN COMP BLEED FRAME FLEX FACE  
CONSTRUCTION (NO LIFTS ON FACES).

### Installation Information:

REMOVE OLD FACES AND INSTALL NEW FLEX  
FACES AS SHOWN.

NOTE: REPLACING LIKE FOR LIKE.  
PROPOSED DIMENSIONS ARE THE SAME AS  
THE EXISTING DIMENSIONS

EXISTING SIGN IS ILLUMINATED AND  
LIGHTING TO BE UTILIZED

Date / Designer 11.09.23 RP

PETCHS\23-2179-PETC...

THIS DOCUMENT CONTAINS CONFIDENTIAL AND PROPRIETARY INFORMATION  
THAT CANNOT BE REPRODUCED OR DIVULGED, IN WHOLE OR IN PART, WITHOUT  
WRITTEN AUTHORIZATION FROM CITY SIGN SERVICE, INC. © 2023

### Revisions

- R1 11.28.23 RP
- R2 02.06.24 RP
- R3 00.00.00 -
- R4 00.00.00 -
- R5 00.00.00 -



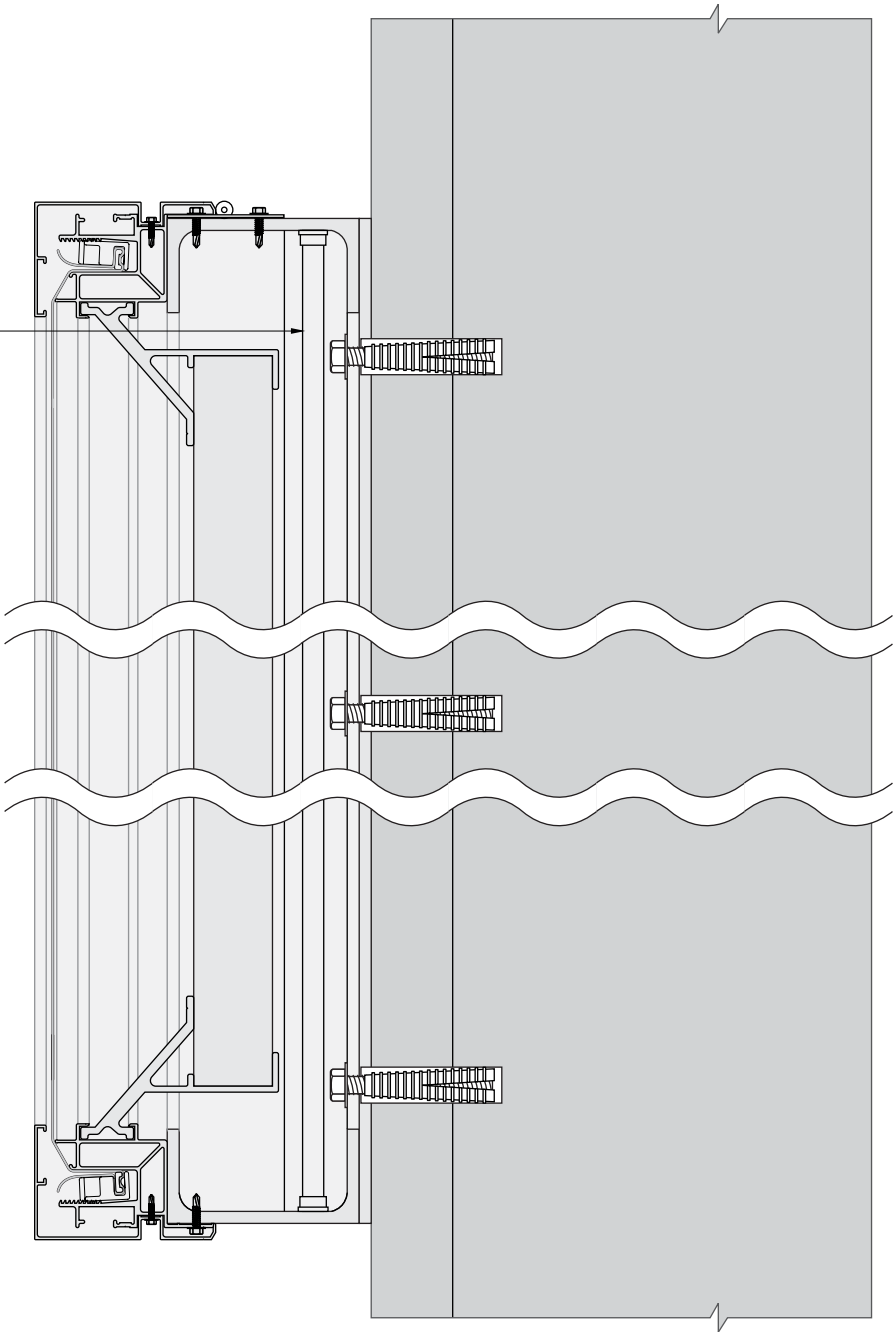
Interior / Exterior  
Sign Manufacturers

424 Caredean Dr.  
Horsham PA, 19044  
T. 215.442.1323  
F. 215.442.1328

Sales: C. Longacre



EXISTING SIGN  
WITH HO LAMPS  
AND BALLASTS.  
LIGHTING TO  
REMAIN AND  
BE UTILIZED.



**A** SECTION  
SCALE: 3"=1'-0"

Date / Designer 11.09.23 RP

PETCHSV23-2179-PETC...

THIS DOCUMENT CONTAINS CONFIDENTIAL AND PROPRIETARY INFORMATION THAT CANNOT BE REPRODUCED OR DIVULGED, IN WHOLE OR IN PART, WITHOUT WRITTEN AUTHORIZATION FROM CITY SIGN SERVICE, INC. © 2023

Revisions

- R1 11.28.23 RP
- R2 00.00.00 -
- R3 00.00.00 -
- R4 00.00.00 -
- R5 00.00.00 -

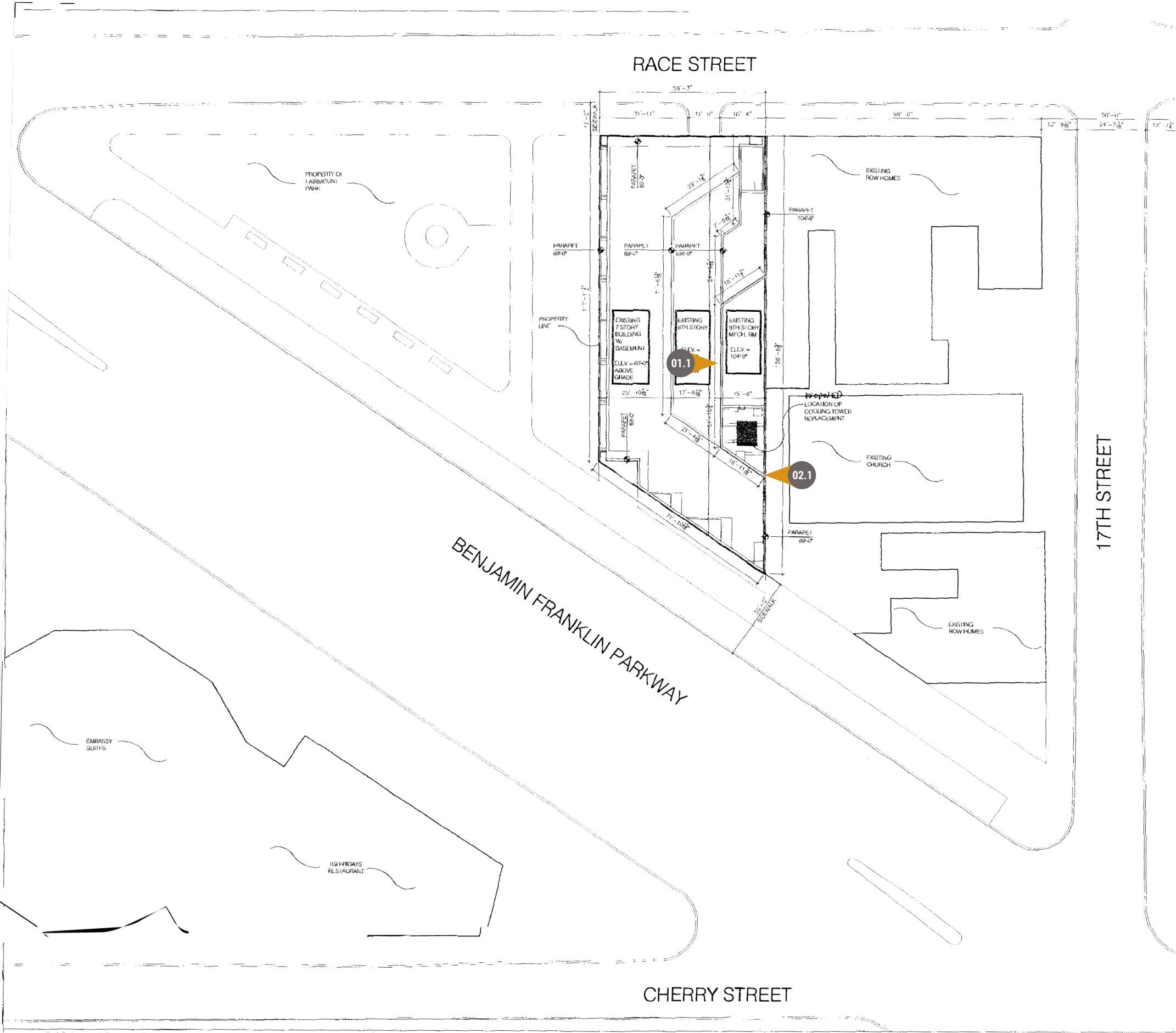


Interior / Exterior  
Sign Manufacturers

424 Caredean Dr.  
Horsham PA, 19044  
T. 215.442.1323  
F. 215.442.1328

Sales: C. Longacre





Date / Designer11.09.23 RP

PETCHS\23-2179-PETC...

THIS DOCUMENT CONTAINS CONFIDENTIAL AND PROPRIETARY INFORMATION THAT CANNOT BE REPRODUCED OR DIVULGED, IN WHOLE OR IN PART, WITHOUT WRITTEN AUTHORIZATION FROM CITY SIGN SERVICE, INC. © 2023

| Revisions |             |
|-----------|-------------|
| R1        | 11.28.23 RP |
| R2        | 00.00.00 -  |
| R3        | 00.00.00 -  |
| R4        | 00.00.00 -  |
| R5        | 00.00.00 -  |

SERVICE

CITY SIGN

INC.

Interior / Exterior  
Sign Manufacturers

424 Caredean Dr.  
Horsham PA, 19044  
T. 215.442.1323  
F. 215.442.1328

Sales: C. Longacre

UL

UNITED STATES  
SIGN COUNCIL