

Memorandum



To: Alex Smith, Director Art Commission
From: Jane Anderson, Project Coordinator, Philadelphia Parks and Recreation
Date: February 7, 2024
Re: Request for Art Commission Administrative Approval

We respectfully request administrative approval at the February Art Commission meeting for improvements to the Cliveden Park Playground. This PPR site is located at 6415 Musgrave Street, Philadelphia, PA 19119.

The following brief describes the extent of work:

Cliveden Park is currently in design for proposed playground replacement and site improvements; The current proposal will replace the existing playground and safety surface. The total playground size will increase from approximately 2645 square feet to 3095 square feet. The proposal will also add additional site furnishings including four PPR standard benches and a trash receptacle on concrete pads.

PPR first engaged with the Friends of Cliveden group to guide a concept design. A community meeting was held in January where community members approved of the initial design and selected the color scheme and types of swings. A concurrent online survey was held for those that could not attend the meeting.

The existing trees and vegetation on site, as well as the stone wall surrounding the swing area will remain and be protected. Please see the next pages for site context and aerial, existing photos, playground layout plan, site furniture selections, and construction circulation diagrams for your understanding of the site and scope.

The Project budget is \$232,000.

cc: Aparna Palantino, Deputy Commissioner, PP&R
Francesco Cerrai, Project Director
Jane Anderson, Project Coordinator
File: Project #16-24-7169-01



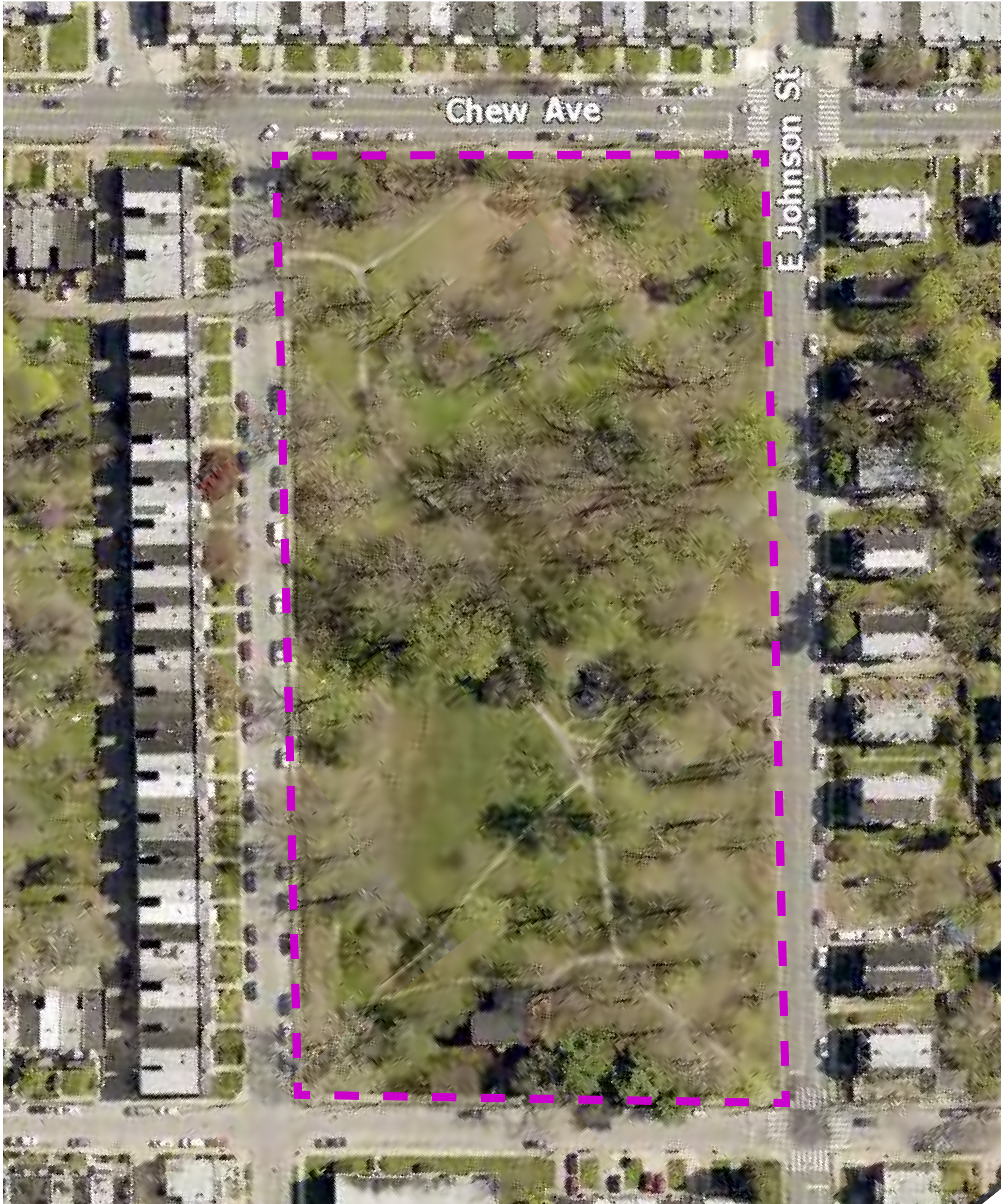
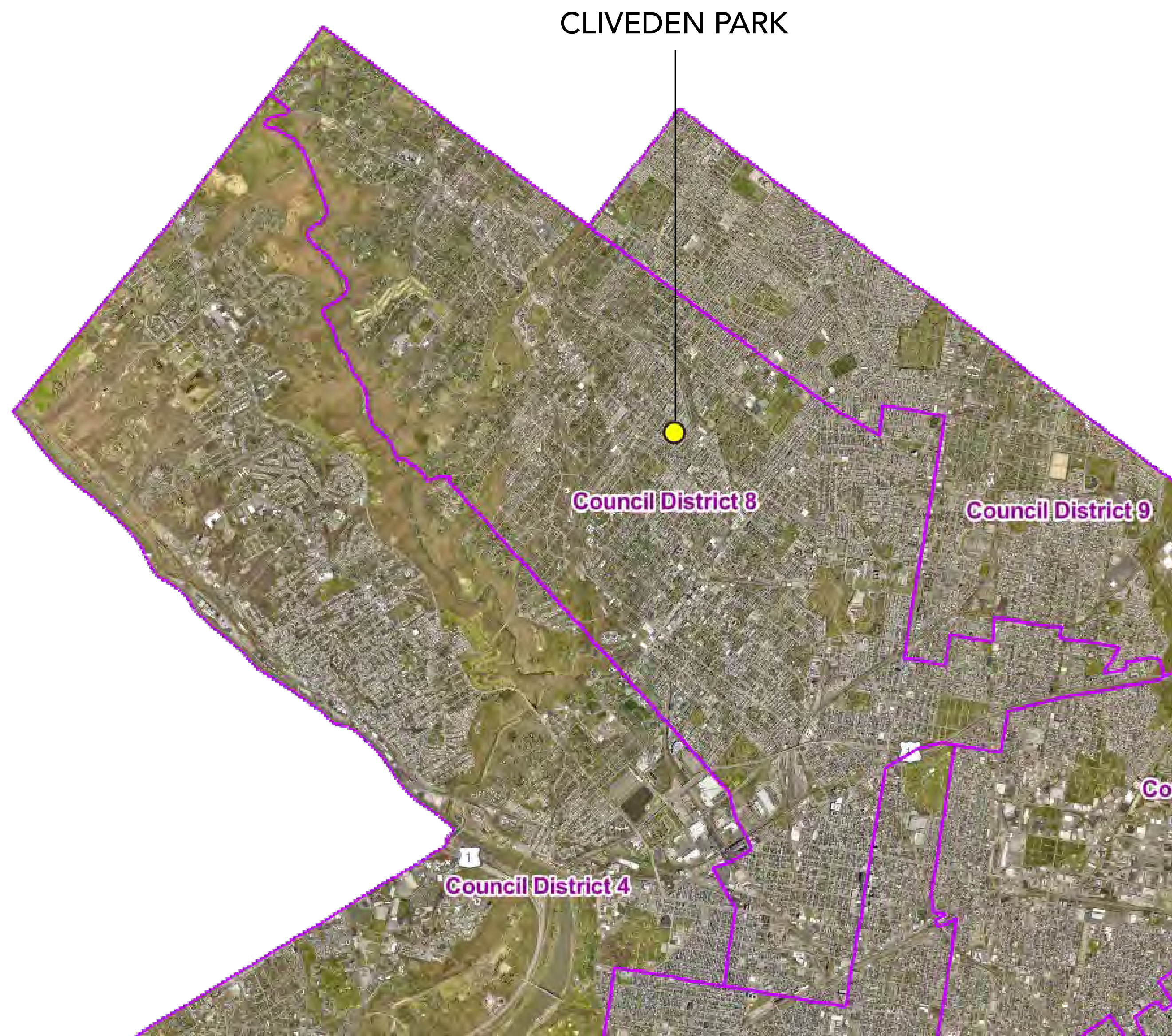
CLIVEDEN PLAYGROUND 6415 Musgrave Street



PHILADELPHIA
PARKS & RECREATION

February 2024

SITE CONTEXT



EXISTING CONDITIONS



EXISTING CONDITIONS



COMMUNITY ENGAGEMENT



MONDAY,
JANUARY
22ND
5:30 - 6:30

CLIVEDEN PLAYGROUND RENOVATION

Share your ideas with
Philadelphia Parks and
Recreation staff on ways to
improve the playground at
Cliveden Park

COMMUNITY MEETING

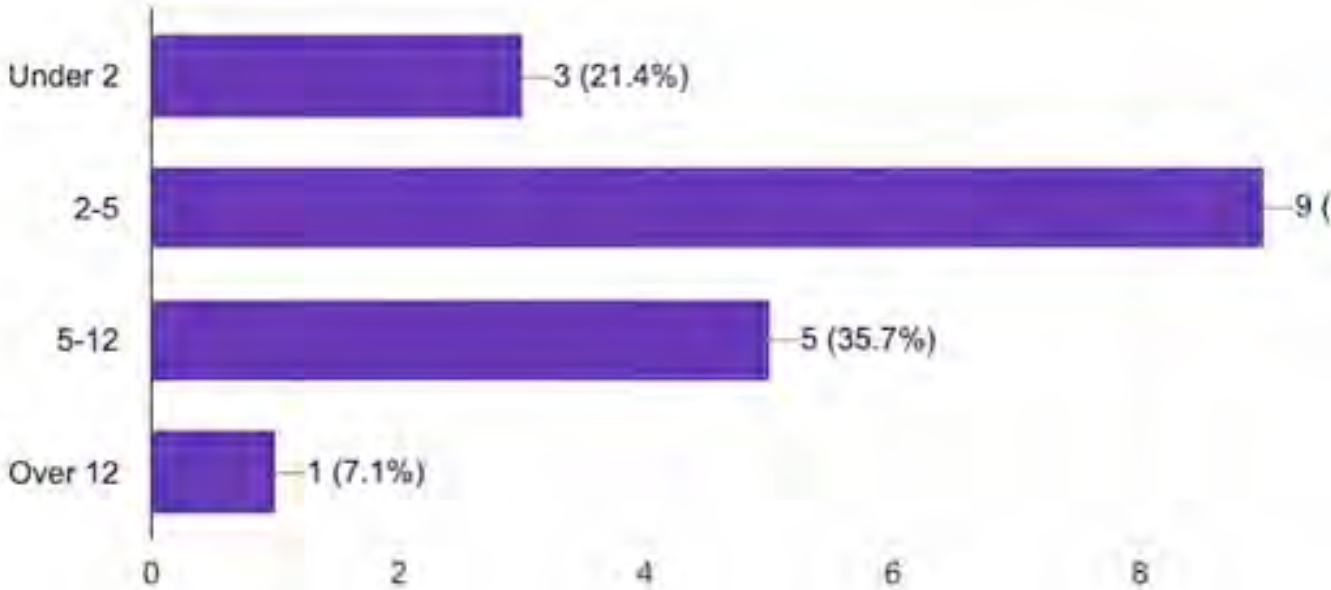
- ✓ Monday, January 22, 2024
- ✓ 5:30PM - 6:30PM
- ✓ Rumph-Mallery Rec Center
- ✓ 100 E Johnson Street
- ✓ Philadelphia, PA 19144

For more information contact jane.anderson@phila.gov



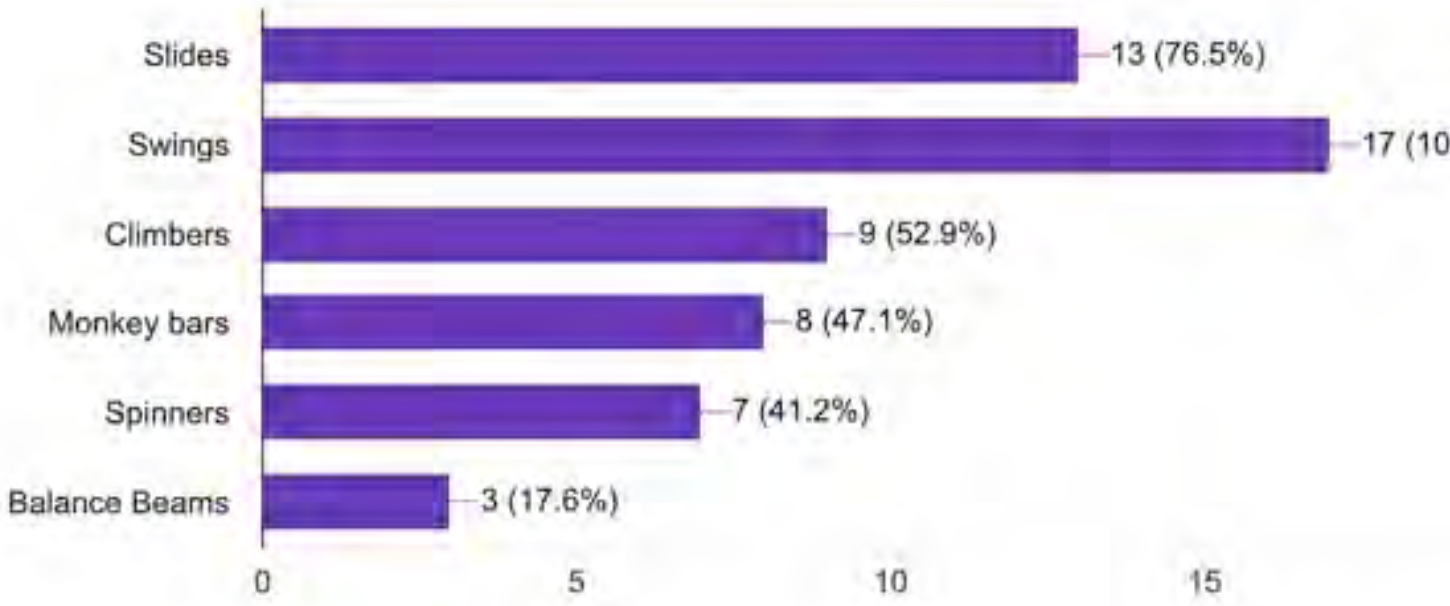
If children in your care use the playground at Cliveden Park, what are their ages?

14 responses



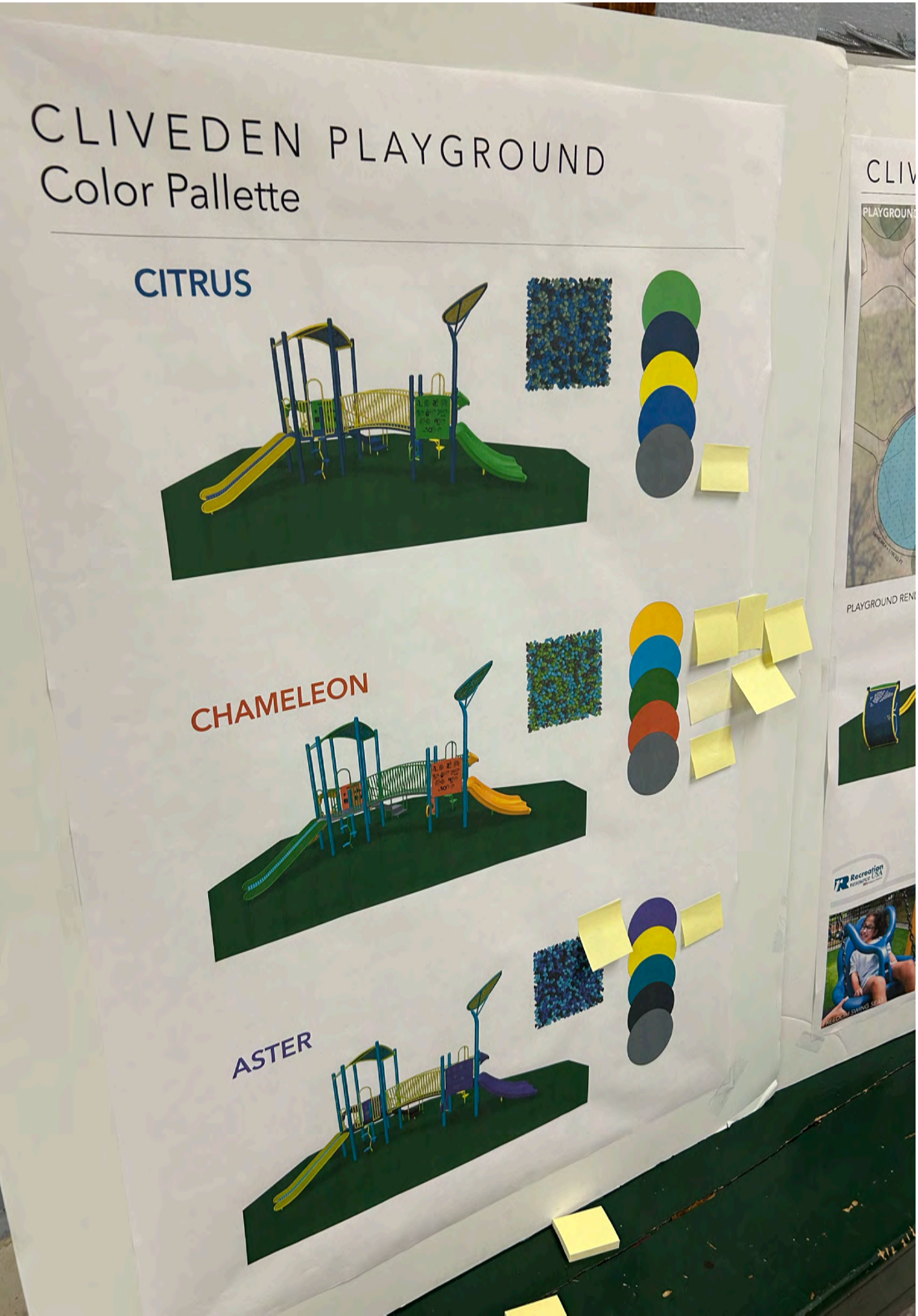
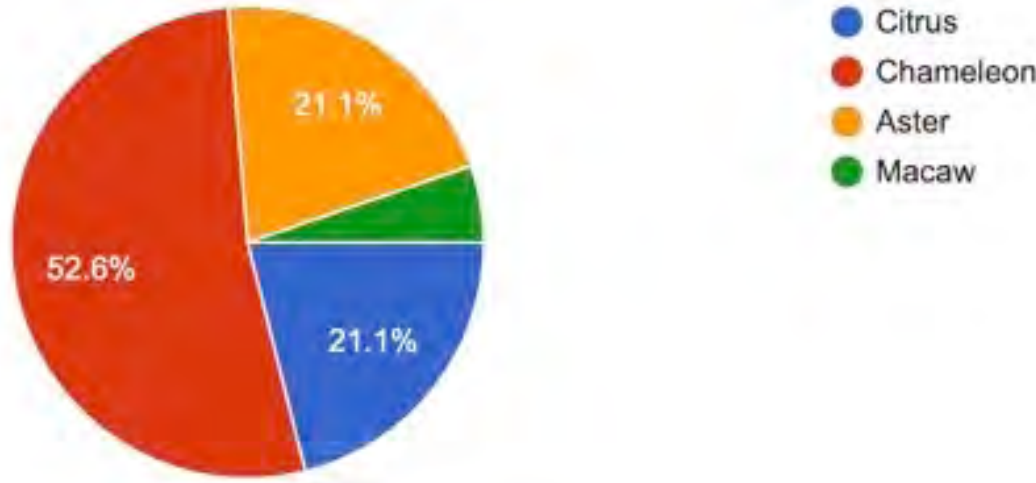
What are you/your child(ren)'s favorite features of playgrounds?

17 responses

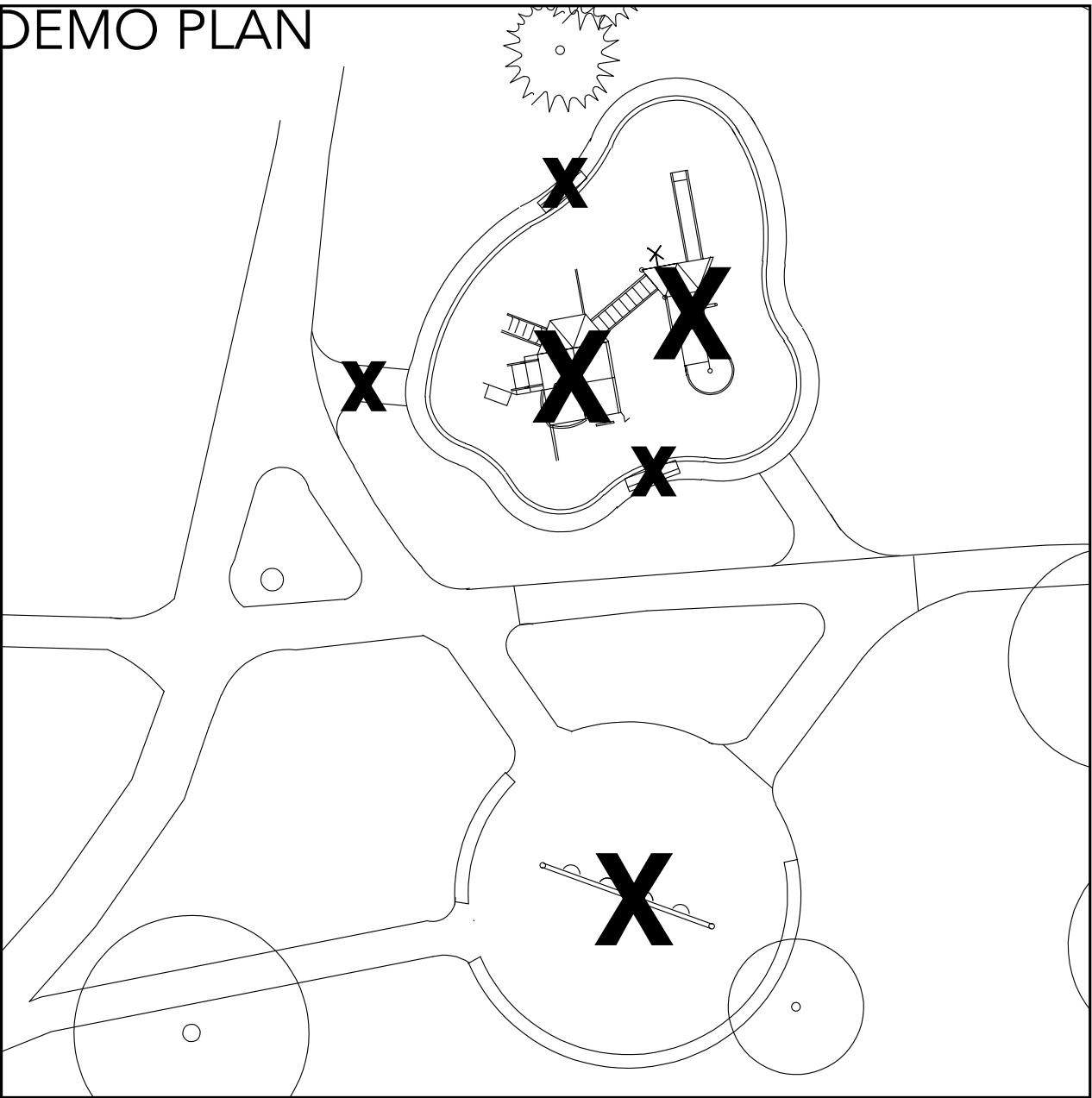


What color scheme do you prefer?

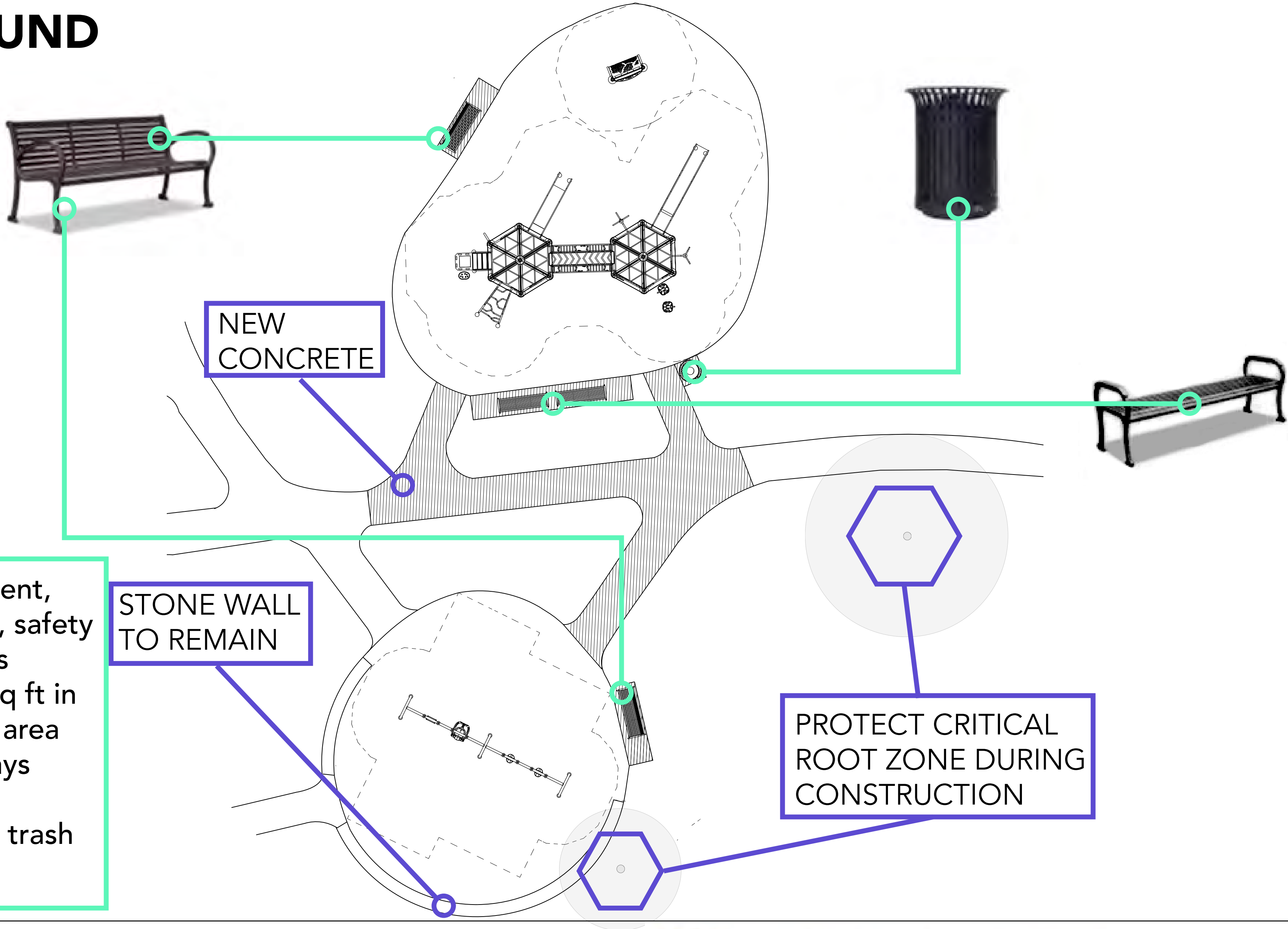
19 responses



PROPOSED PLAYGROUND



- Remove existing playground equipment, wooden benches, concrete surround, safety source, and select concrete walkways
- Install new PIP safety surface, 1900 sq ft in playground area, 1195 sq ft in swing area
- Replace and realign concrete walkways
- Install concrete pads for 2 backless benches, 2 benches with back, and 1 trash receptacle



PROPOSED PLAYGROUND



CIRCULATION

EXISTING CIRCULATION



CIRCULATION DURING CONSTRUCTION



CONSTRUCTION ENTRANCE

PROPOSED CIRCULATION

