

Memorandum



To: Alex Smith, Director Art Commission
From: Darby Mann
Date: January, 25th 2024
Re: Request for Art Commission Review- Final

We respectfully request a spot on the February Art Commission agenda for final review regarding capital improvements at Hawthorne Playground. This is a PPR site is located at 1200 Carpenter St. Philadelphia, Pa 19147.

The following brief describes the extent of work.

Hawthorne Cultural Center is currently in design for playground improvements; the scope also includes a renovated sport court. In response to the Commissioners' request, PPR has committed extensive time to community outreach in an effort to incorporate as much feedback into the design. PPR hosted a third community meeting in December and promoted an online survey to gather and incorporate as much constituent feedback as possible. Another priority of this project is to protect existing assets such as the Honeylocust trees that provide excellent shade and preserve the accessibility of the playground. Included with this letter are the additional details regarding the proposed tree pits and community engagement efforts, as requested by the Commissioners.

PPR has further developed the design to reflect community preferences and desires for the proposed playground renovation. Following art commission approval, PPR will finalize the design and coordinate the installation of new play equipment, safety surface and site furnishings. In addition, the sport court will receive new surfacing, striping and an entrance from Kimball St. Fencing upgrades are included in the project as required by existing conditions.

The scope is determined by Council, recreation staff, and informed by the existing condition of the site. The playground and sport court show significant evidence of wear and are the most critical components to update. As a result, the scope is limited to updating only these items so that we optimize the available funds. The Project budget is \$600,000 including surveying and design services. Gilmore & Associates is the design consultant and will be presenting on behalf of PPR.

Thank you for your attention; upon your acceptance, our team will submit the presentation materials at least one week prior to the Feb. 14th meeting.

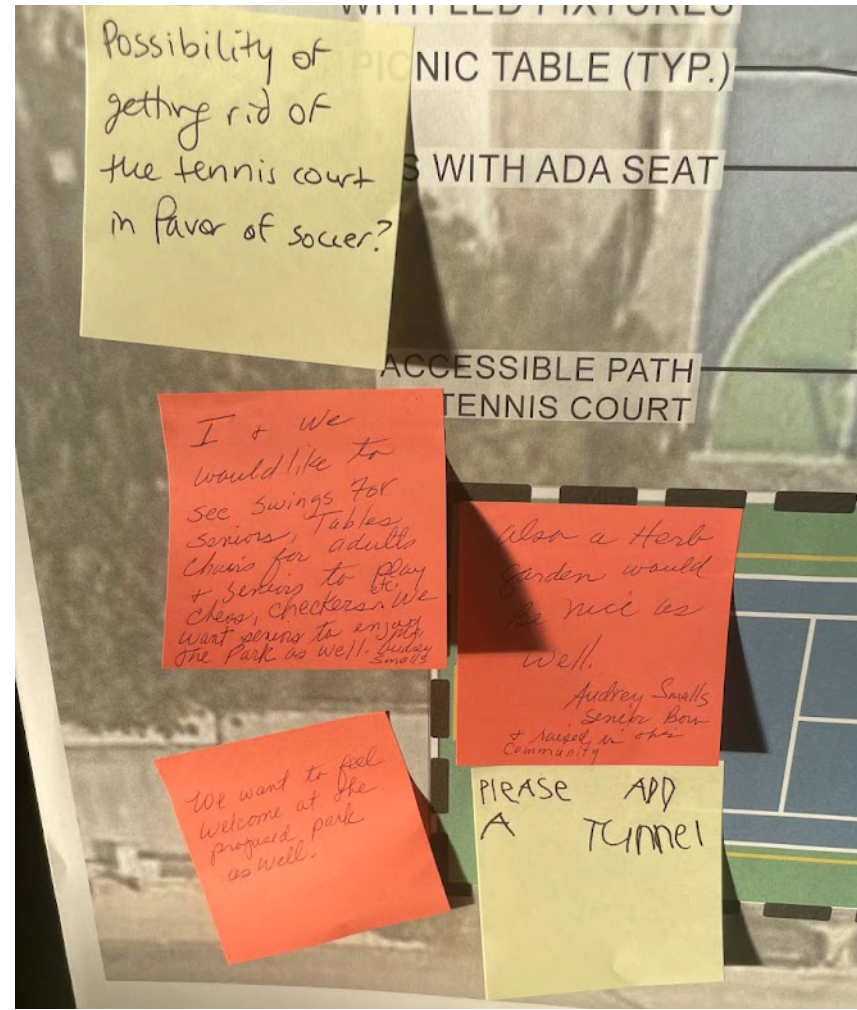
cc: Aparna Palantino, Deputy Commissioner, PP&R
Francesco Cerrai, Project Director
Darby Mann, Project Coordinator
File: Project #16-22-7095-01, Section 2.12



EARTH TONES

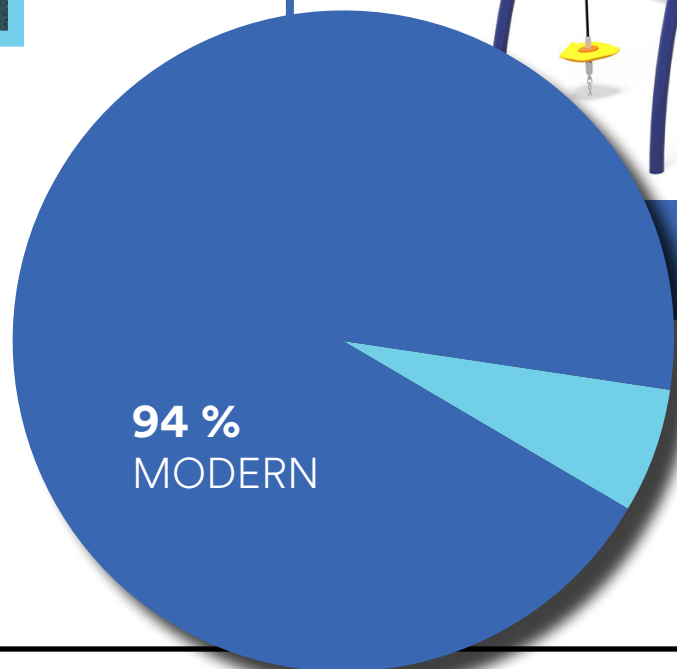
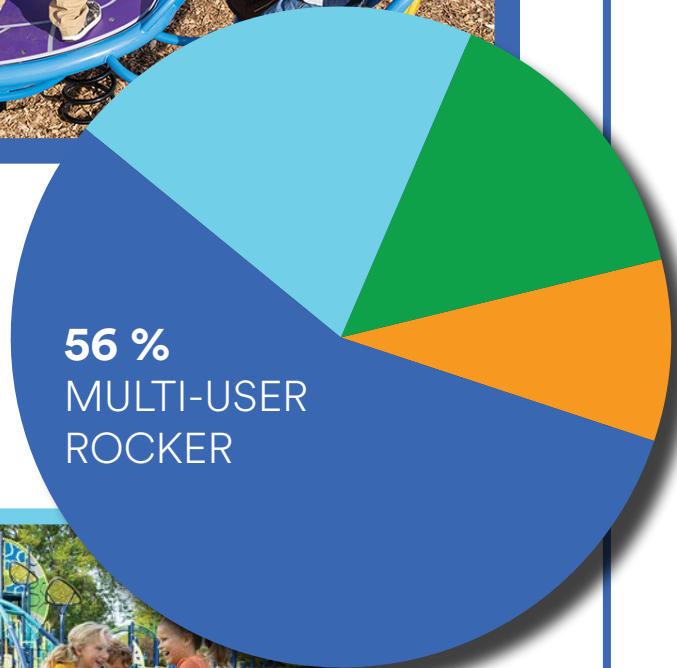
HAWTHORNE

BRIGHT & LOUD



SURVEY RESULTS

“Which spinner/rocker is preferred?
Consider multiple users vs. individual.”



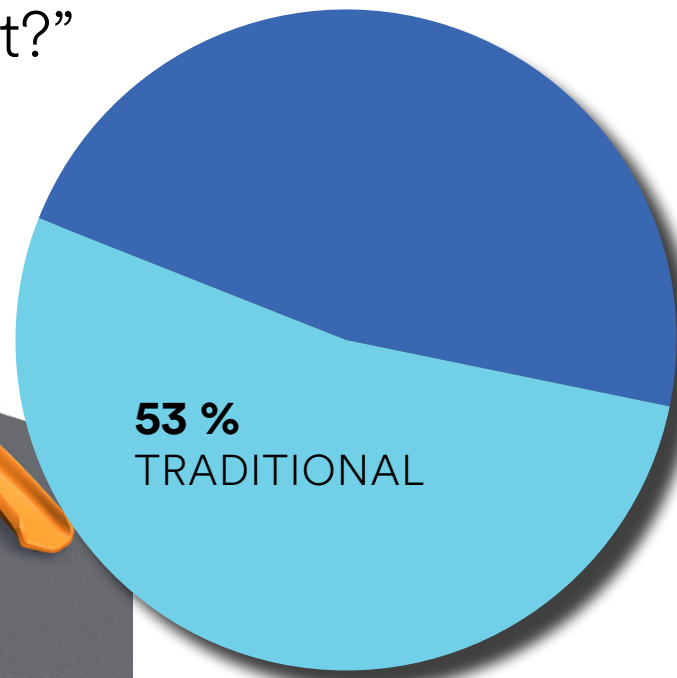
“Which 2-5 y/o play structure do you or your child like best?”



MODERN



TRADITIONAL



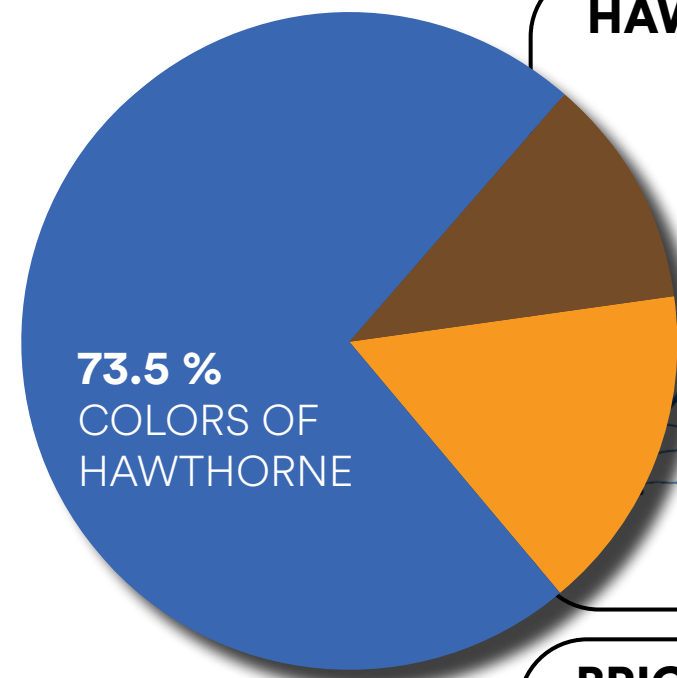
“Which 5-12 y/o play structure do you or your child like best?”



MODERN

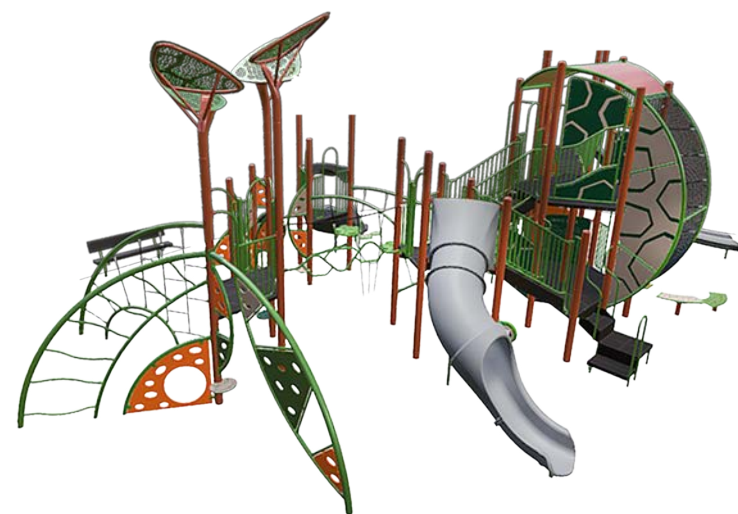


TRADITIONAL

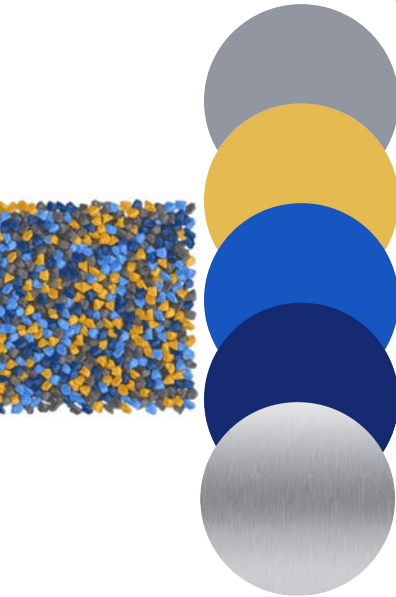
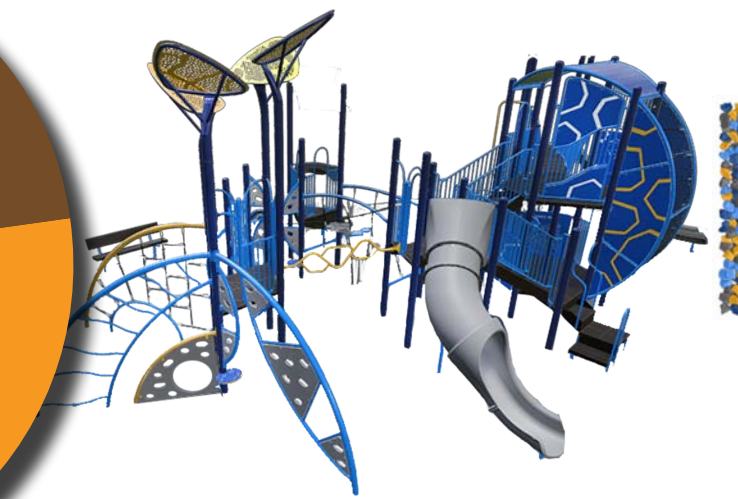


“Which color scheme do you like best for the play equipment?”

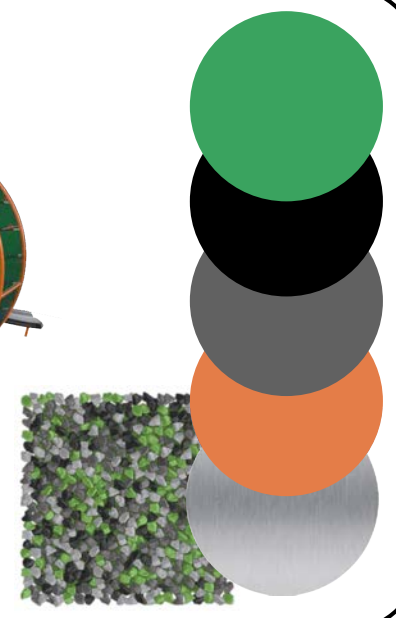
EARTH TONES



HAWTHORNE



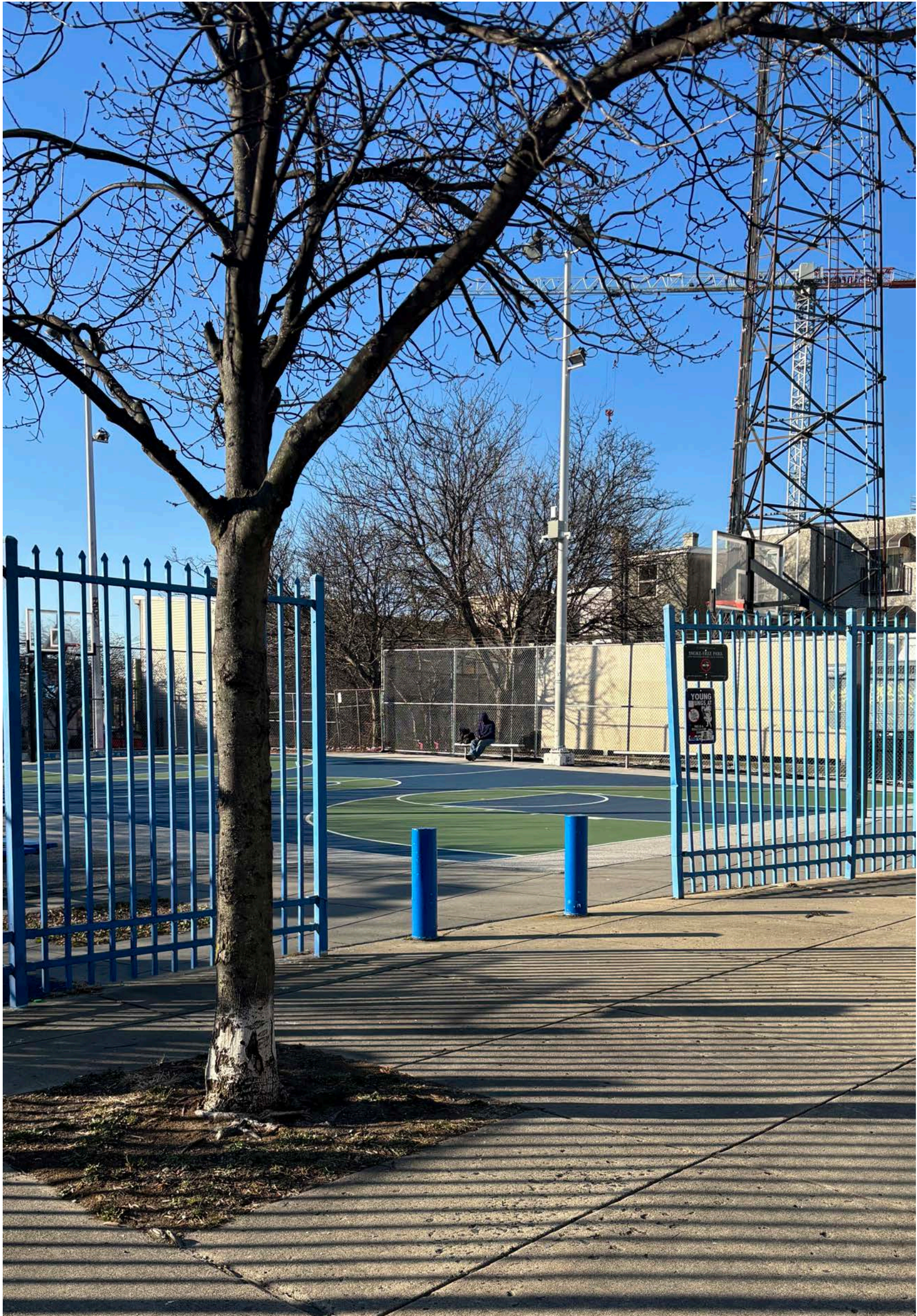
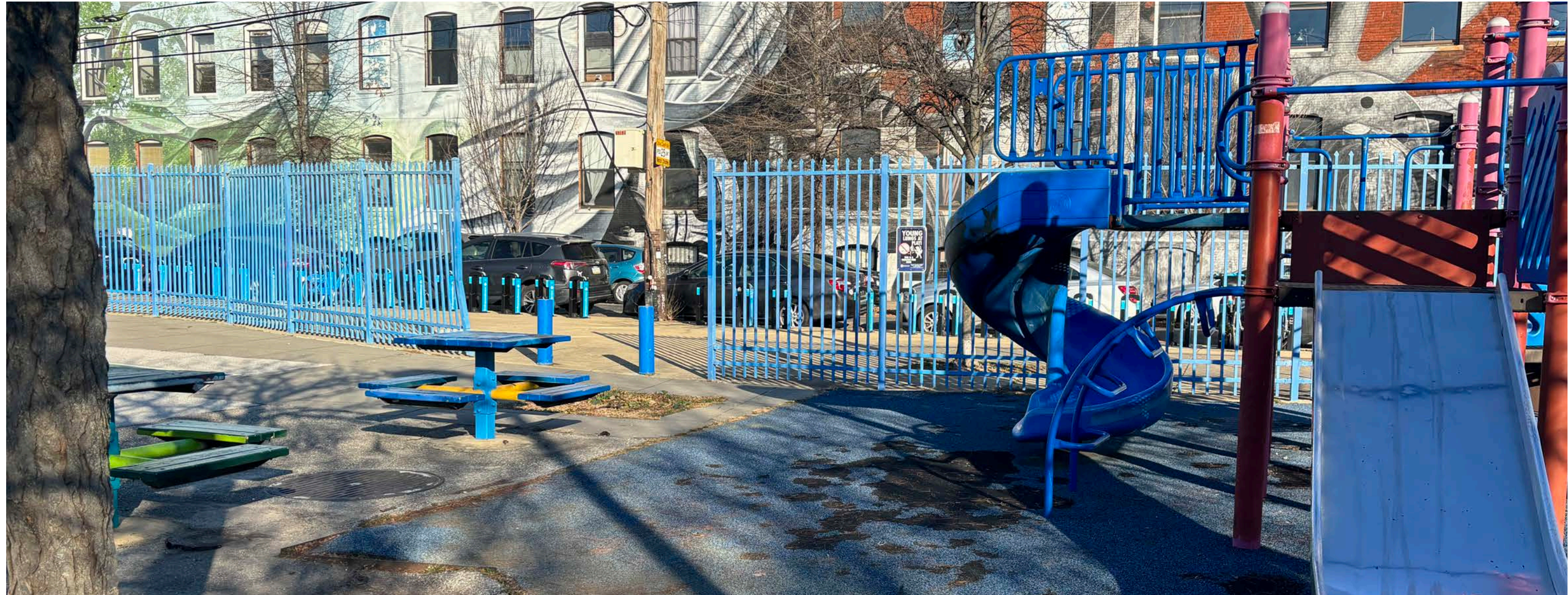
BRIGHT & LOUD





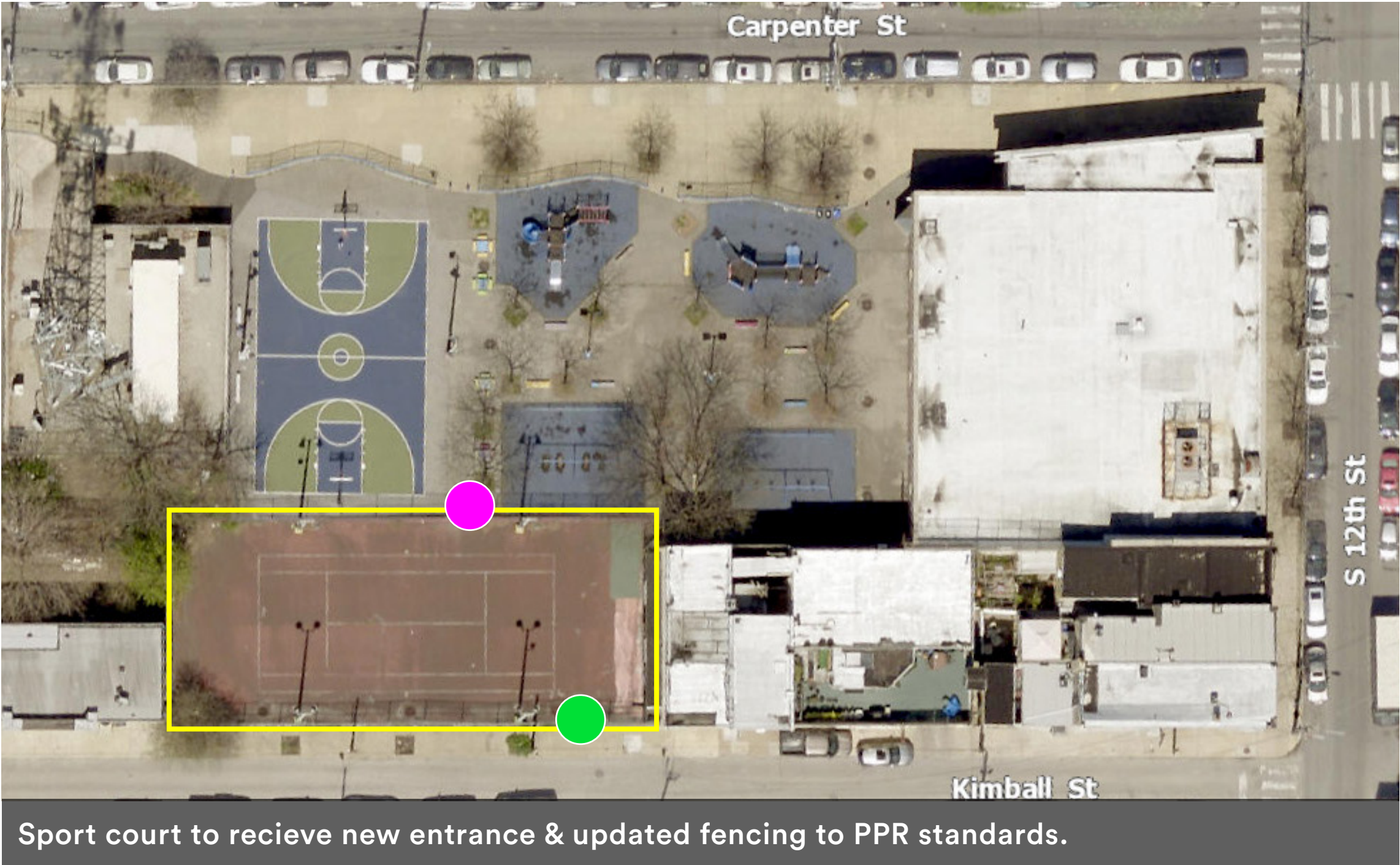
HAWTHORNE PLAYGROUND | 1200 Carpenter St.



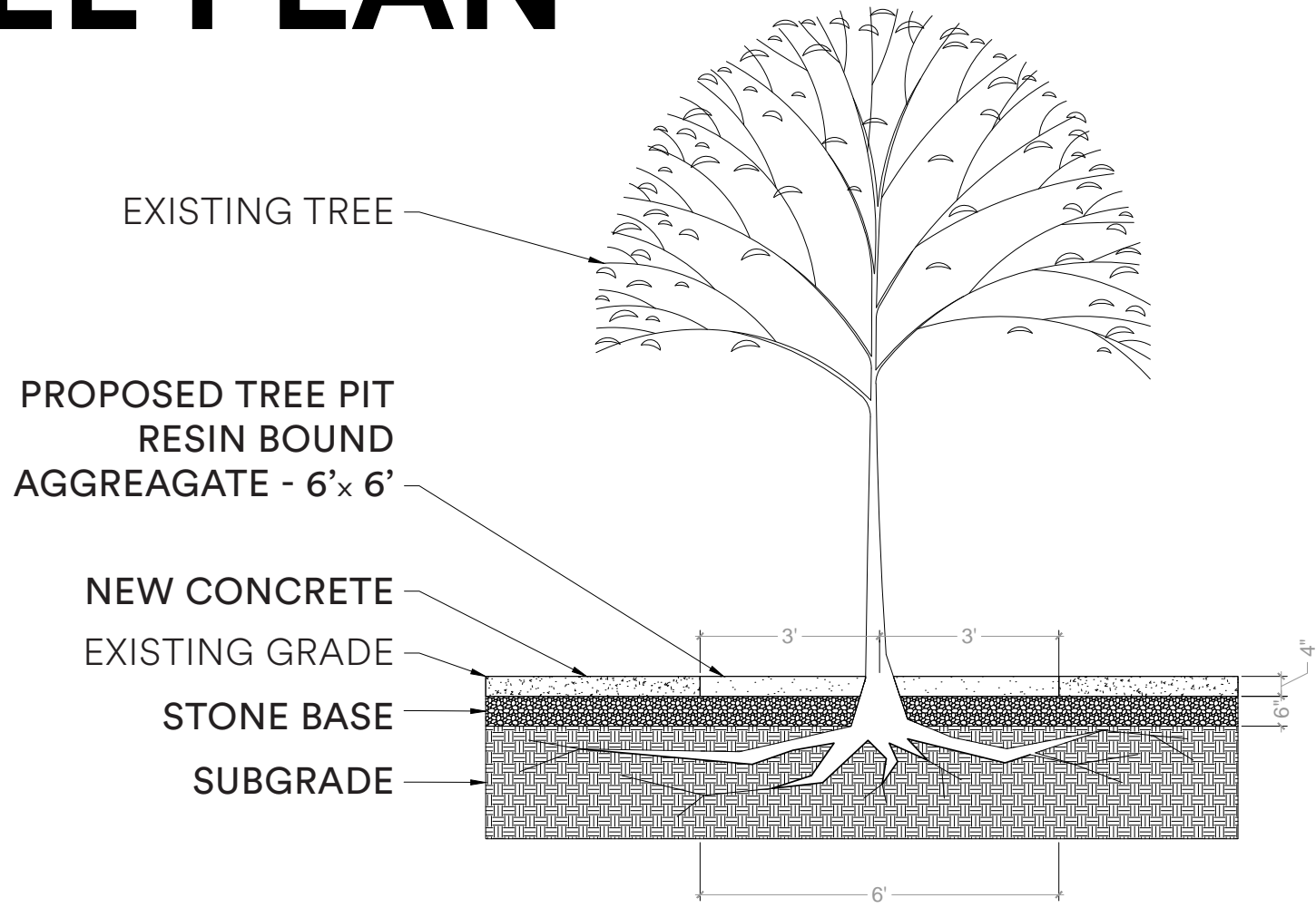


Carpenter St. sidewalk, outside fence, facing playground



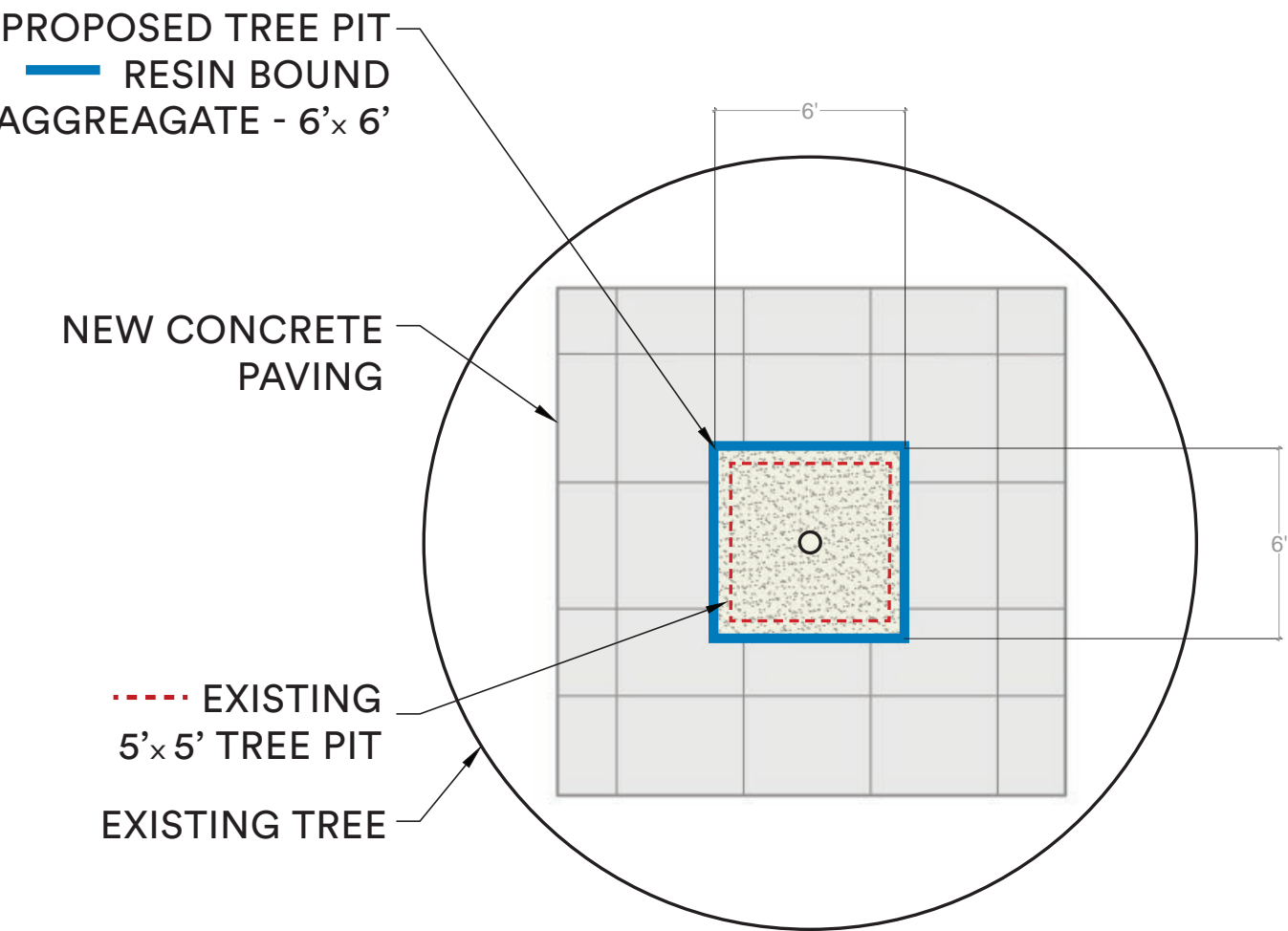


TREE PLAN



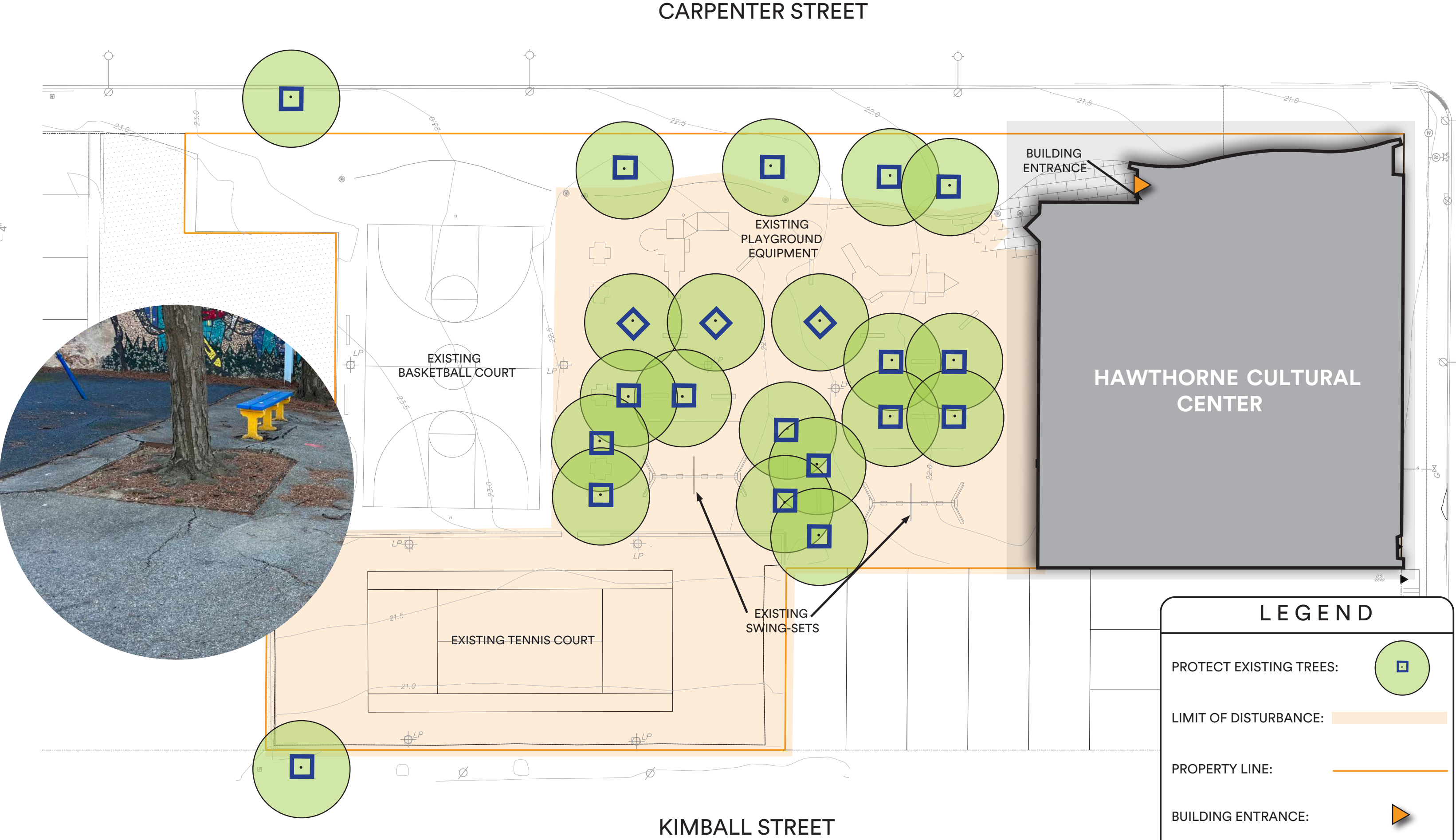
TREE IN RESINOUS PAVING SECTION DETAIL

NOT TO SCALE

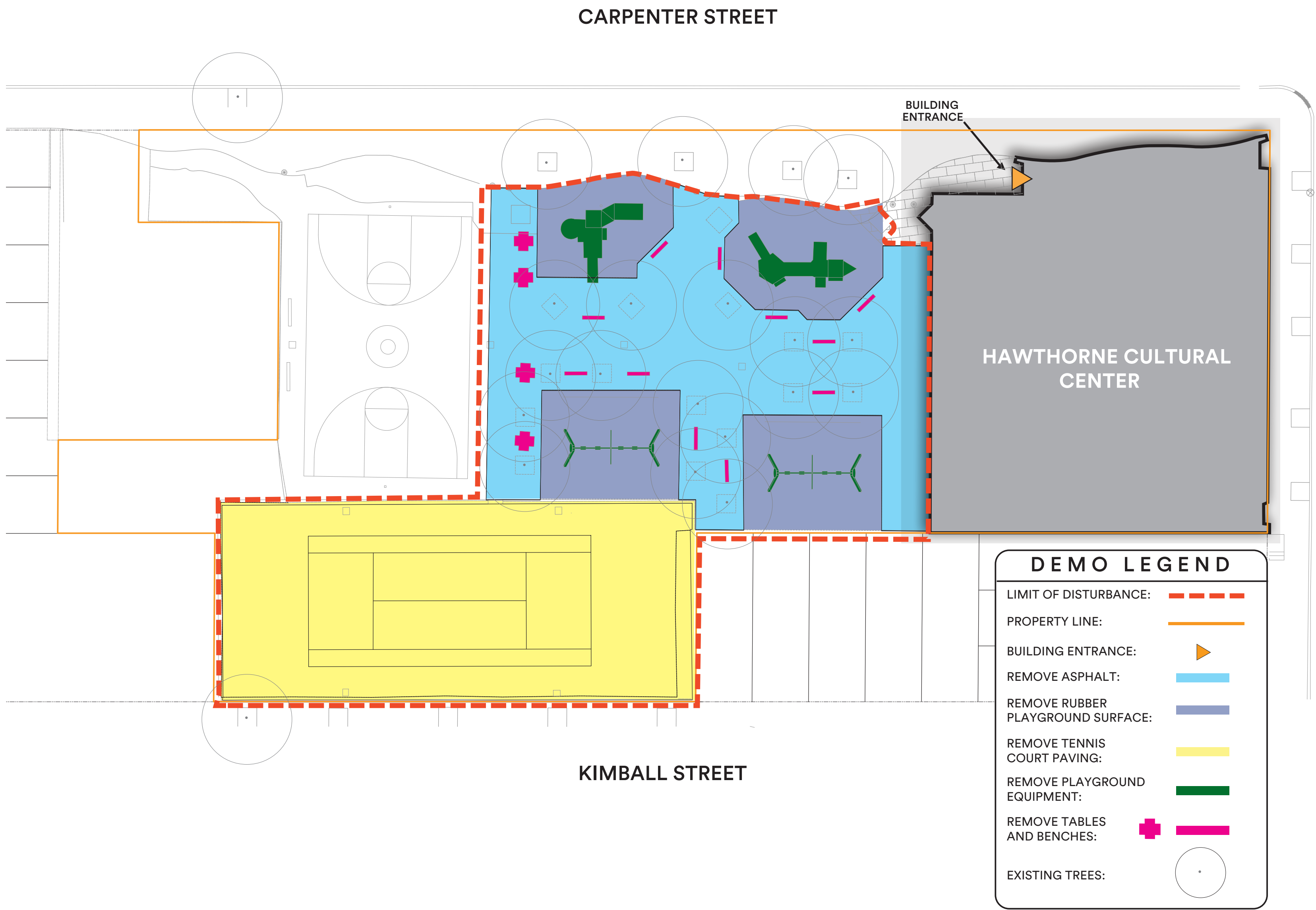


TREE IN RESINOUS PAVING PLAN DETAIL

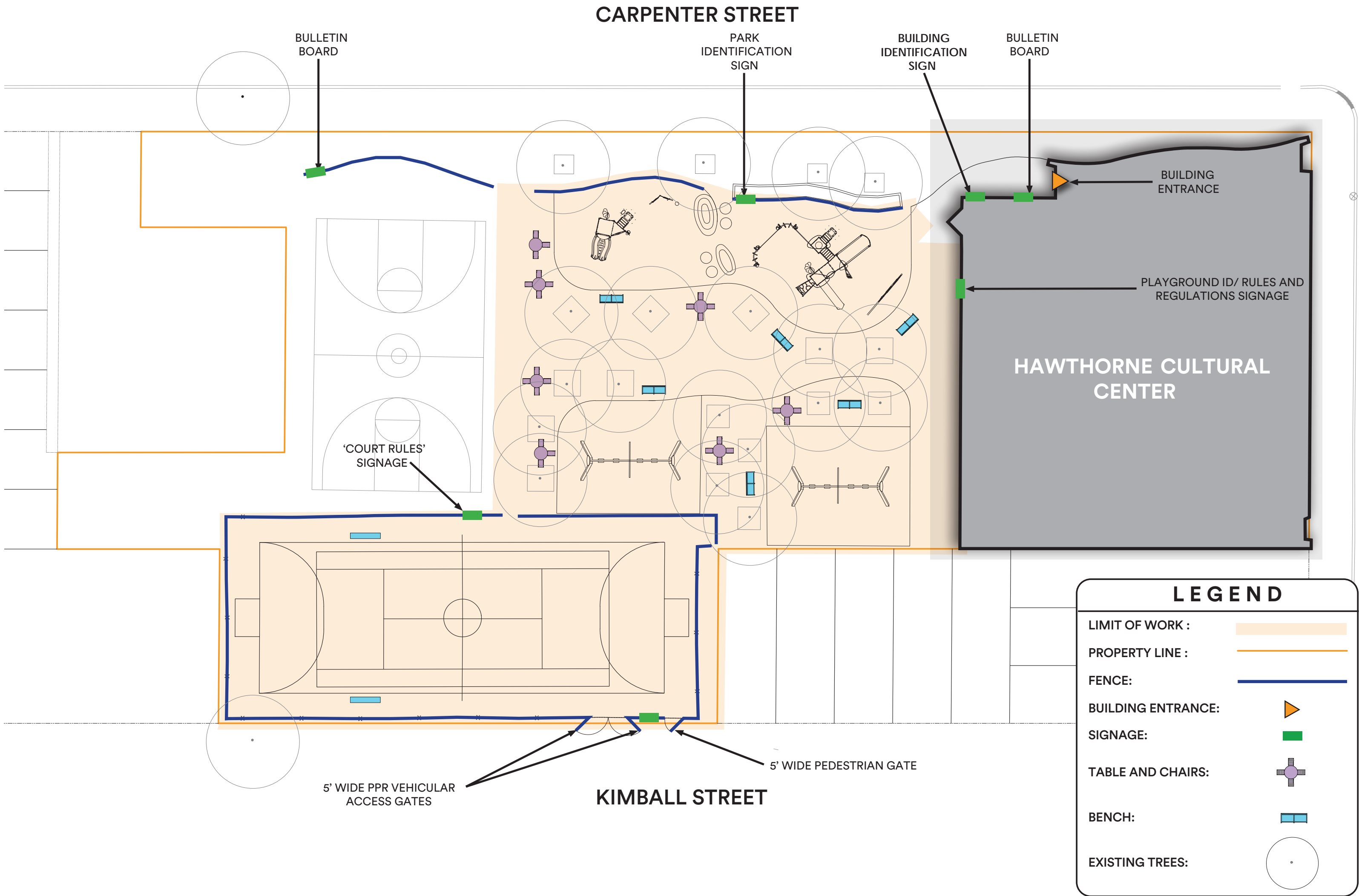
NOT TO SCALE



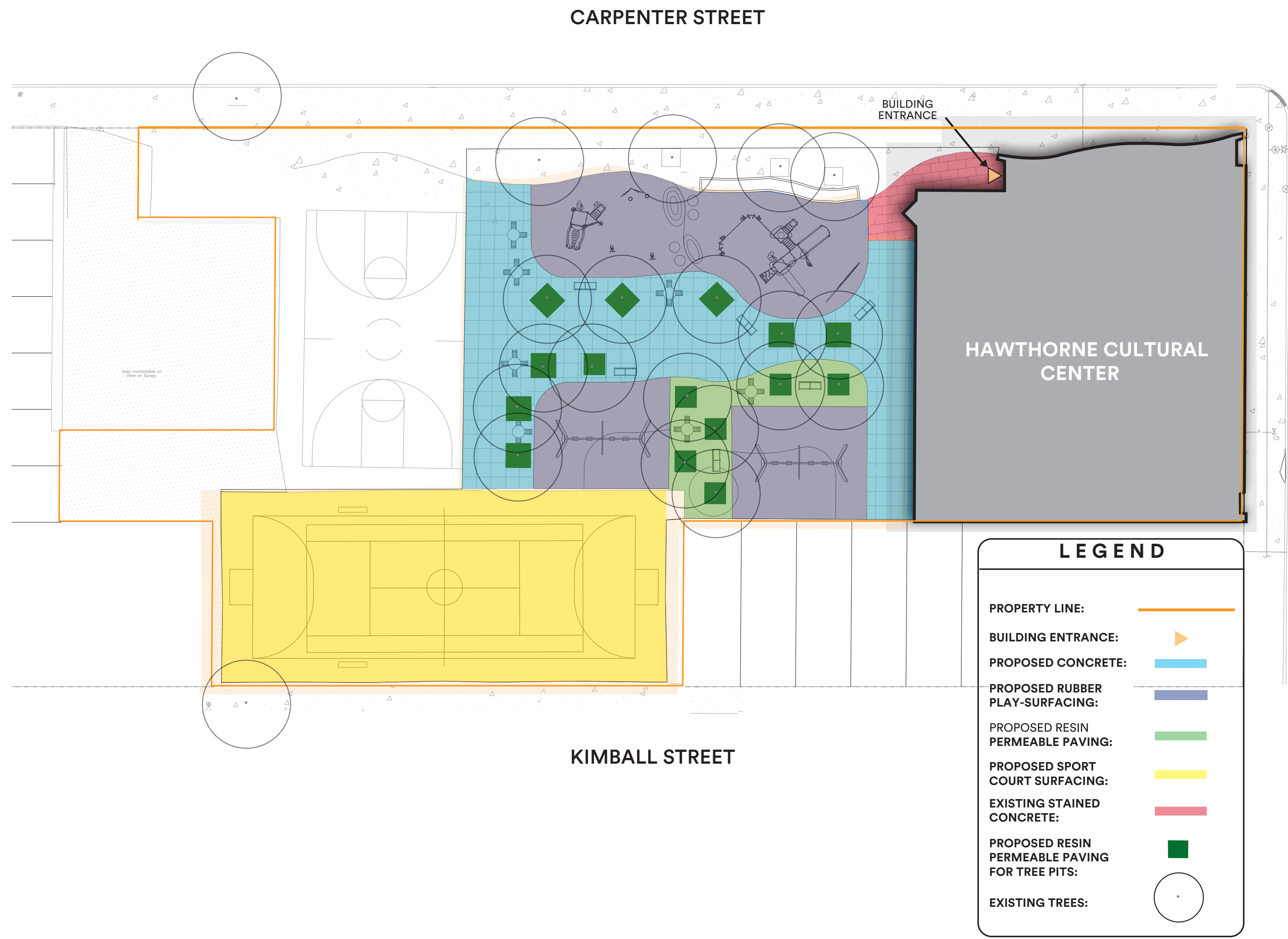
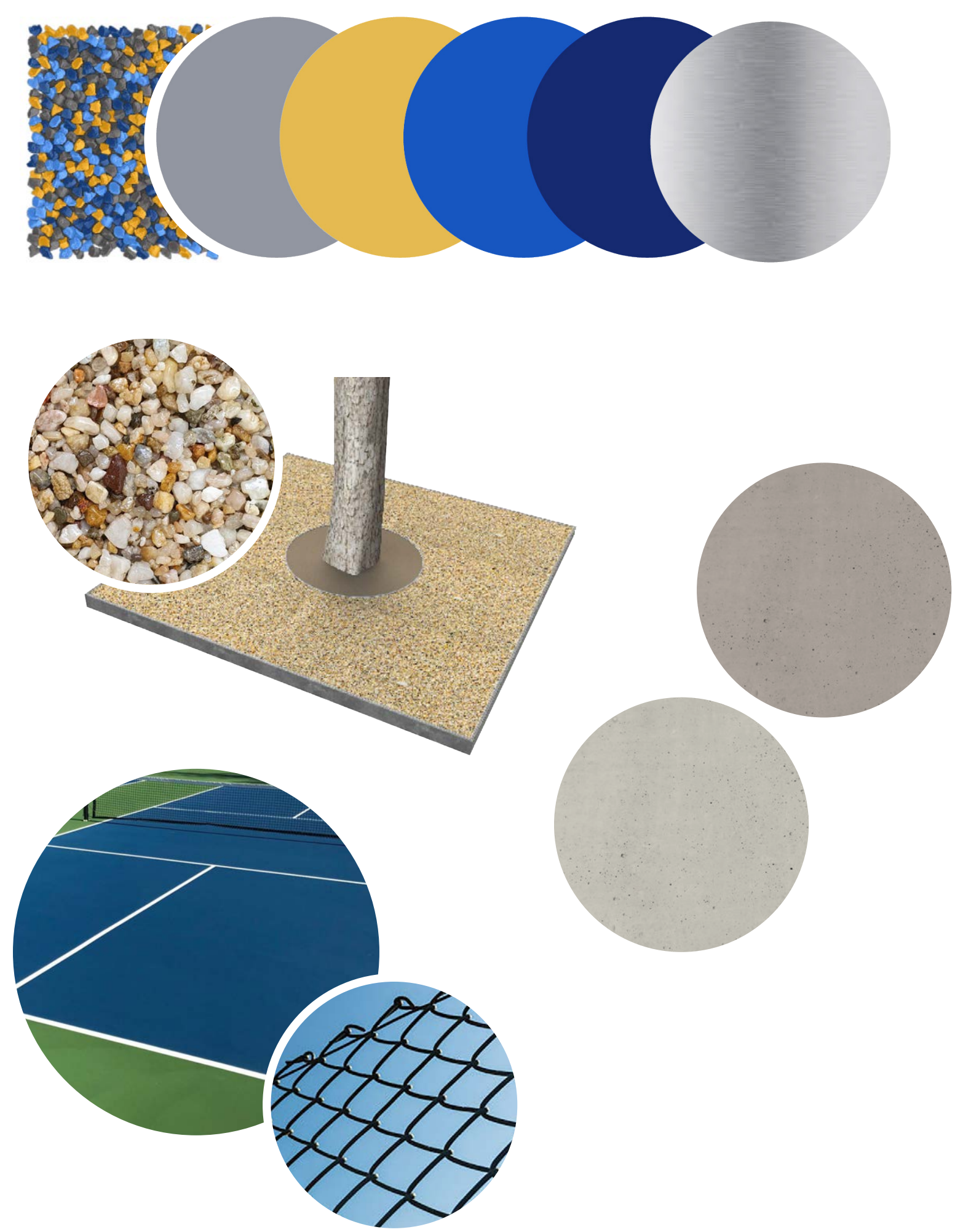
DEMO PLAN



SITE FURNISHINGS PLAN



MATERIALS PLAN



LEGEND	
PROPERTY LINE:	
BUILDING ENTRANCE:	
PROPOSED CONCRETE:	
PROPOSED RUBBER PLAY-SURFACING:	
PROPOSED RESIN PERMEABLE PAVING:	
PROPOSED SPORT COURT SURFACING:	
EXISTING STAINED CONCRETE:	
PROPOSED RESIN PERMEABLE PAVING FOR TREE PITS:	
EXISTING TREES:	



EQUIPMENT

 Indicates inclusive element



ADA harness swing & Intergenerational swing *(standard belts & buckle incl.)*



Multi-user "orb" rocker



Playsurface mounds



Flower hand chimes



STEM Play Panels

EQUIPMENT RENDERINGS



EQUIPMENT RENDERINGS



PROPOSED IMPROVEMENTS

