



Corporate Headquarters
207 Senate Avenue
Camp Hill, PA 17011
P 717.763.7211 | F 717.763.8150

gannettfleming.com

January 31, 2024

To: Philadelphia Art Commission
1515 Arch Street
13th Floor
Philadelphia, PA 19102

Re: SEPTA 34th Street Station ADA Improvements Project Cover Letter

Dear Members of the Art Commission:

For the past several months, Gannett Fleming has been working with SEPTA and local stakeholders to advance the design for the installation of a new street level elevator and three stair head houses at SEPTA's 34th Street Station located at the intersection of 34th and Market Streets. This proposed project is part of SEPTA's ongoing efforts to improve ADA accessibility across their system.

Gannett Fleming initially presented the project and its design concepts to the Art Commission during the Commission's November meeting held on November 8, 2023. Following this presentation and subsequent discussion, the project ultimately received 'Concept Approval' with the note from the Commission indicating that "a reduction in height for the headhouse would be preferred if possible". As a follow up to the conceptual approval, we would like to be placed on the agenda for the next meeting of the Art Commission, currently scheduled for February 14th, to present our latest design related content with the intent of obtaining final approval for the 34th Street project.

As required, we will forward to you by next Wednesday 2/7, the supporting materials for the project, including color photographs of the existing conditions and updated site plans and renderings illustrating the development of the design since the November meeting. As previously noted, funding for the project will be provided at the state level. No federal or Philadelphia capital funds are anticipated. As part of the project SEPTA intends to incorporate an Art-in-Transit program, which will be managed by SEPTA.



Please feel free to contact me with any questions about the project at (717) 329-4035 or by email at jlydzinski@gfnet.com. Additionally, please include Will Kunkle, SEPTA Project Manager and Timothy Yiu, Project Architect on any official correspondence. Contact information for both individuals has been provided below.

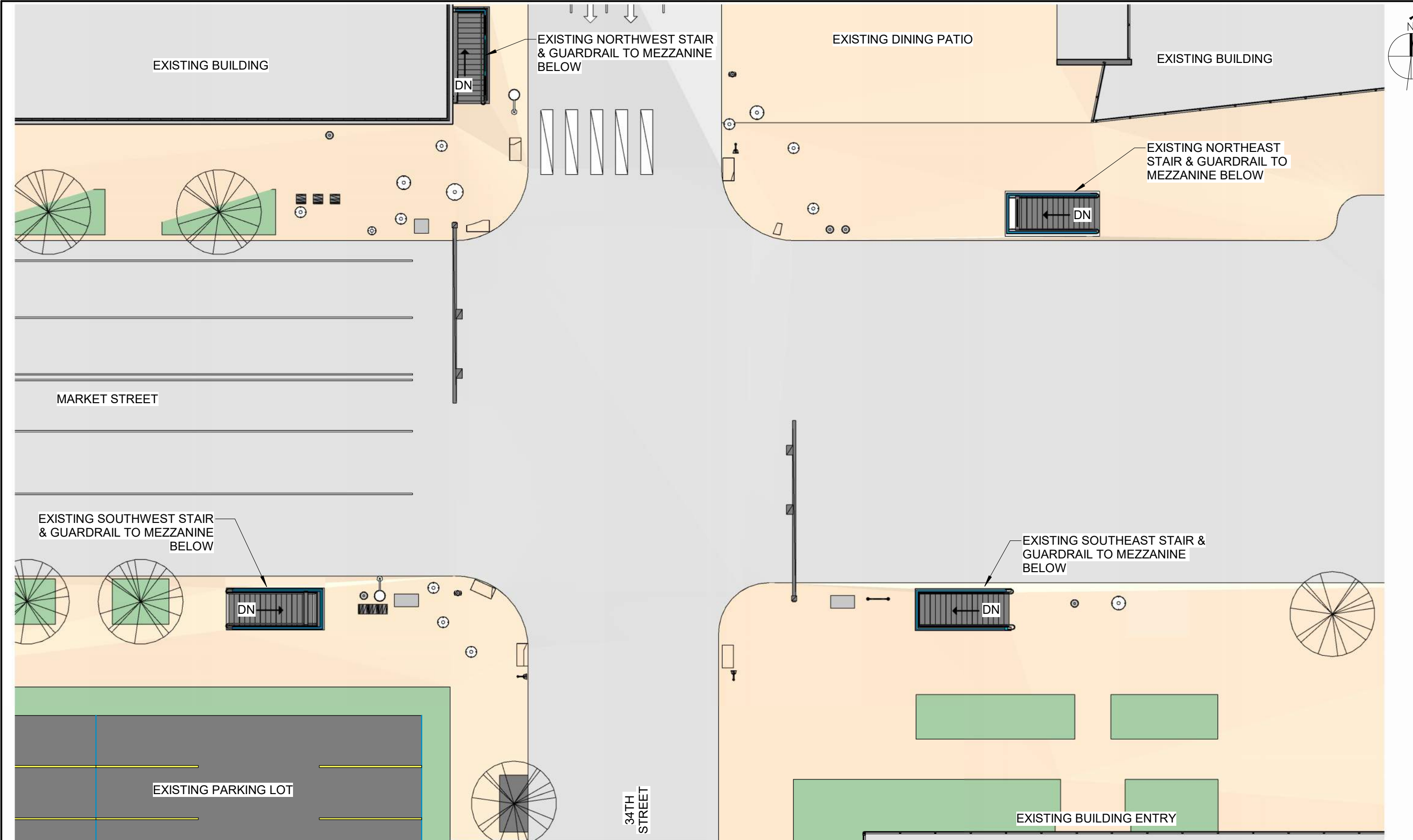
Very truly yours,

GANNETT FLEMING, INC.

A handwritten signature in black ink, appearing to read "John C. Lydzinski".

John C. Lydzinski, P.E.
Project Manager

cc: Will Kunkle, SEPTA (wkunkle@septa.org)
Timothy Yiu, Gannett Fleming (tyiu@gfnet.com)



2/7/2024 3:20:46 PM

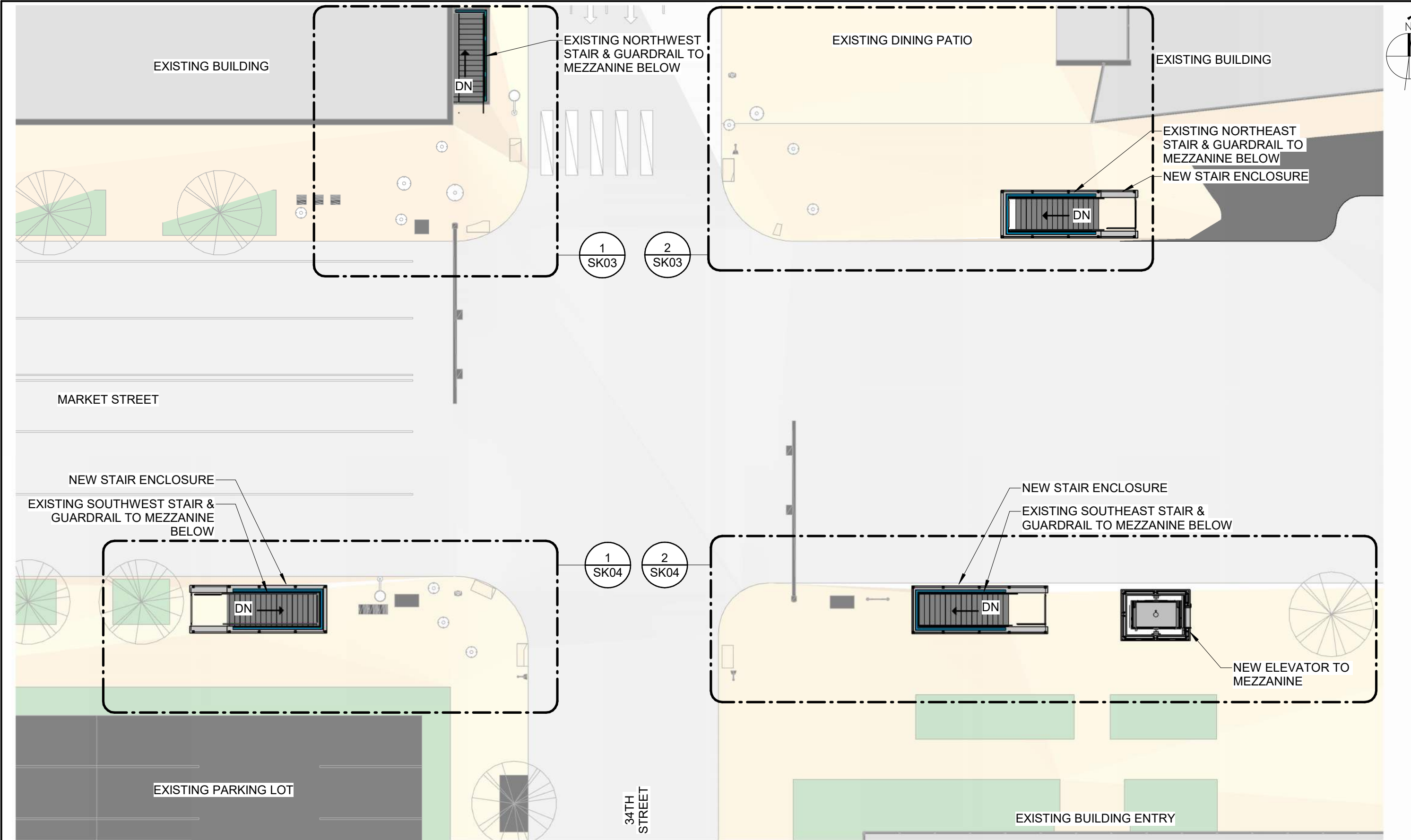
1
EXISTING STREET LEVEL
SCALE: 1/16" = 1'-0"

GANNETT FLEMING
1801 Market Street, Suite 2600
Philadelphia, PA 19103

EXISTING OVERALL STREET LEVEL
SEPTA ADA IMPROVEMENTS
34TH STREET STATION
MARKET FRANKFORD LINE
ART COMMISSION PRESENTATION

DESIGNED BY: MA
DRAWN BY: NAF
CHECKED BY: TY
APPROVED BY: JCL
SCALE: 1/16" = 1'-0"
PROJECT NO.

ISSUE DATE:
02/14/2024
SHEET NUMBER:
SK01
OF 99



2/7/2024 3:20:47 PM

1
SK02

PROPOSED STREET LEVEL

SCALE: 1/16" = 1'-0"

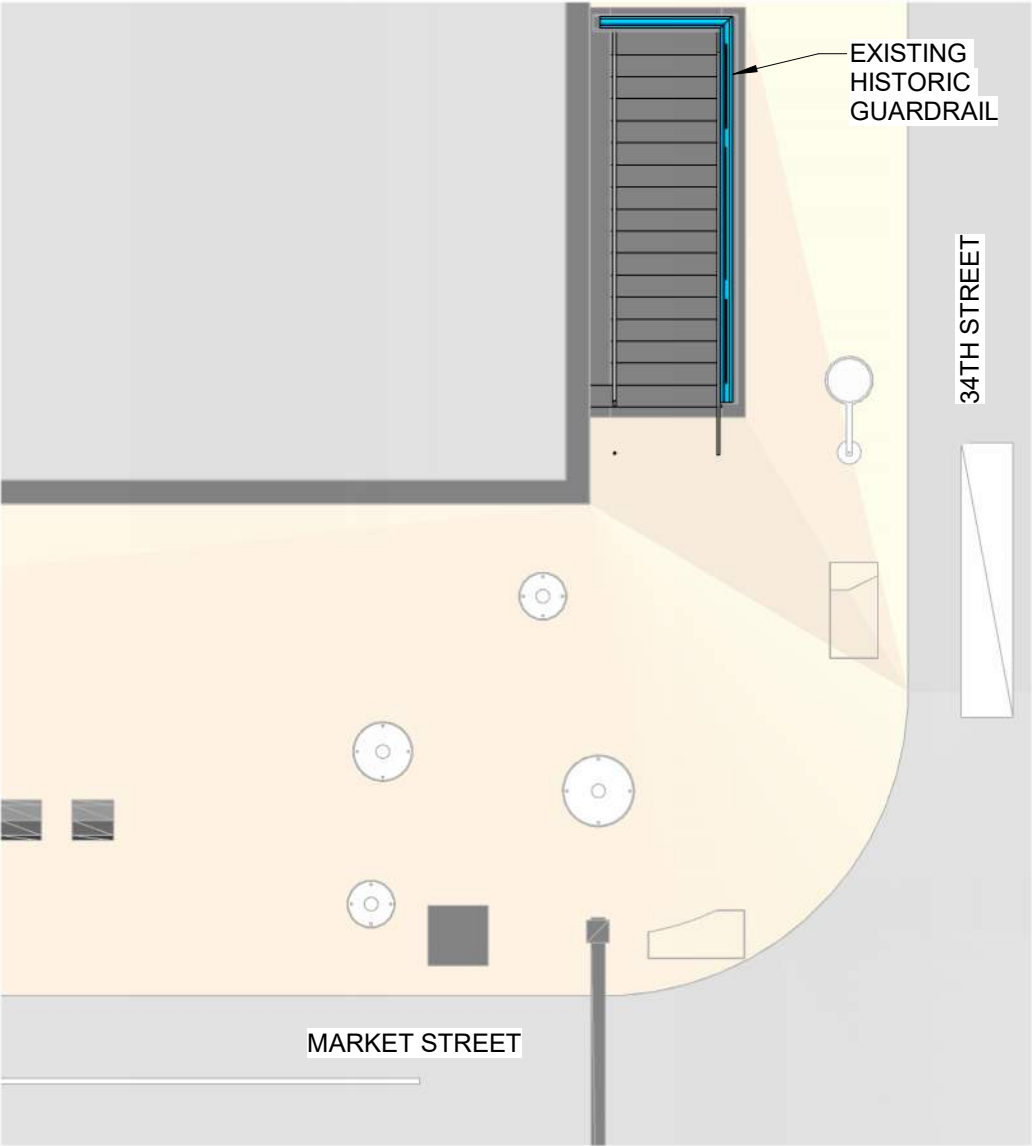
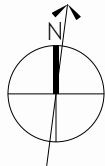


1801 Market Street, Suite 2600
Philadelphia, PA 19103

PROPOSED OVERALL STREET LEVEL
SEPTA ADA IMPROVEMENTS
34TH STREET STATION
MARKET FRANKFORD LINE
ART COMMISSION PRESENTATION

DESIGNED BY: MA
DRAWN BY: NAF
CHECKED BY: TY
APPROVED BY: JCL
SCALE: 1/16" = 1'-0"
PROJECT NO.

ISSUE DATE:
02/14/2024
SHEET NUMBER:
SK02
OF 99



1 NORTHWEST CORNER
SCALE: 1/8" = 1'-0"



2 NORTHEAST CORNER
SCALE: 1/8" = 1'-0"

2/7/2024 3:20:47 PM

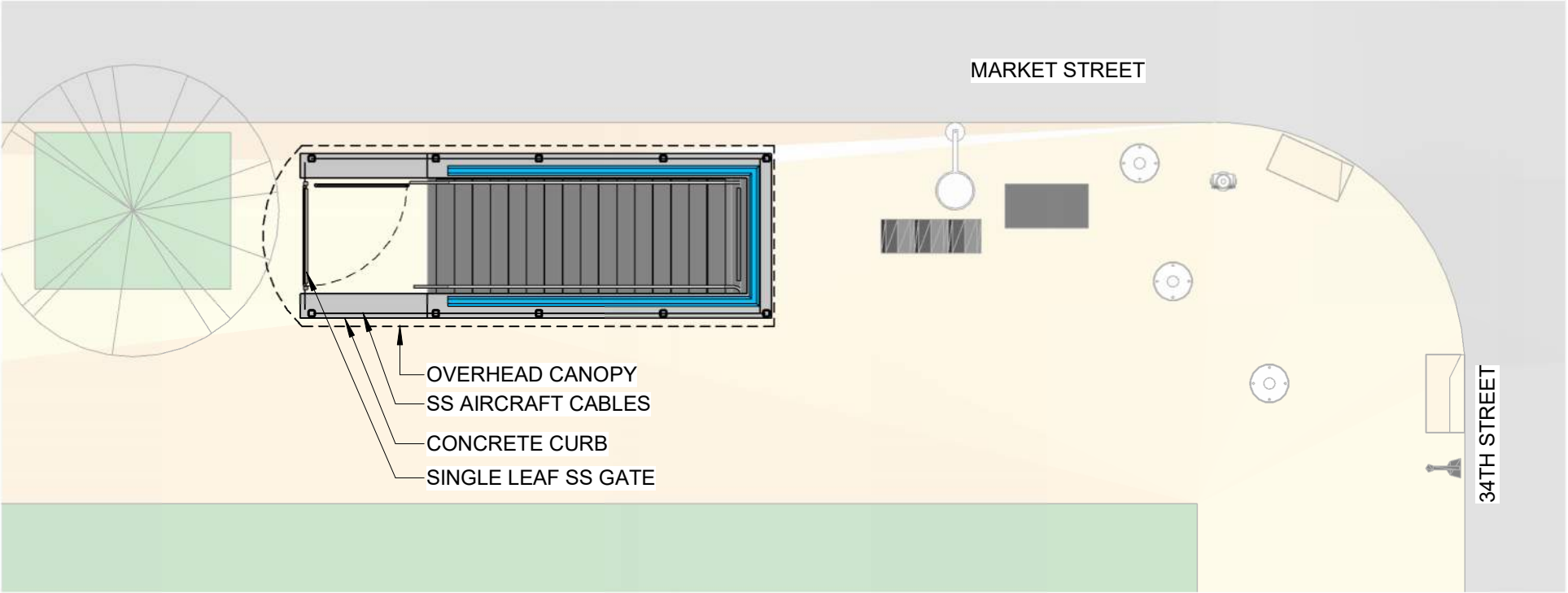


1801 Market Street, Suite 2600
Philadelphia, PA 19103

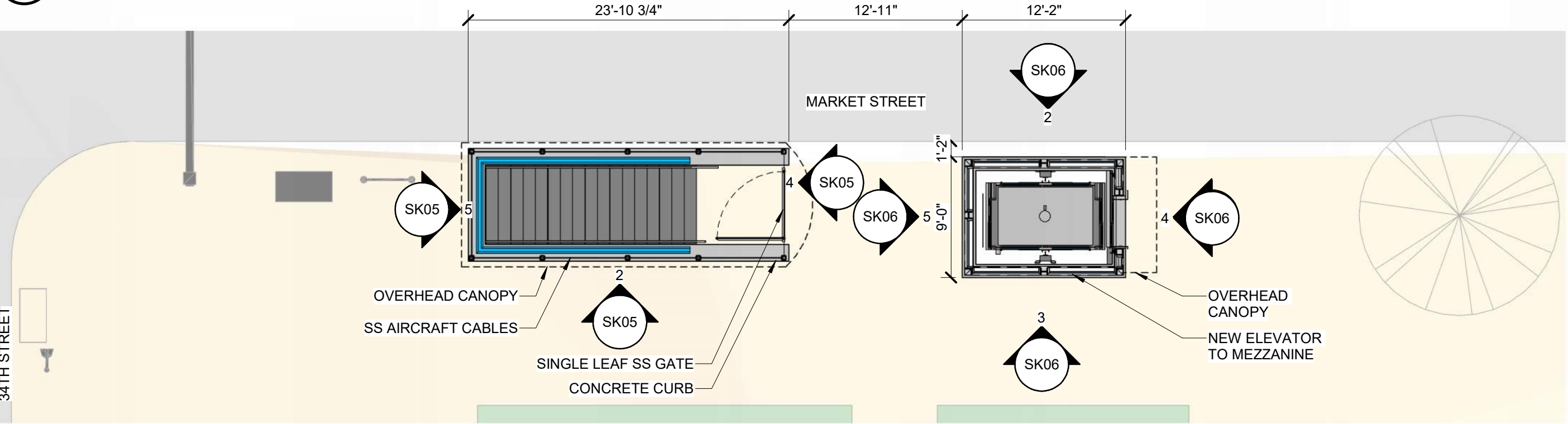
PROPOSED ENLARGED CORNERS I
SEPTA ADA IMPROVEMENTS
34TH STREET STATION
MARKET FRANKFORD LINE
ART COMMISSION PRESENTATION

DESIGNED BY: MA
DRAWN BY: NAF
CHECKED BY: TY
APPROVED BY: JCL
SCALE: 1/8" = 1'-0"
PROJECT NO.

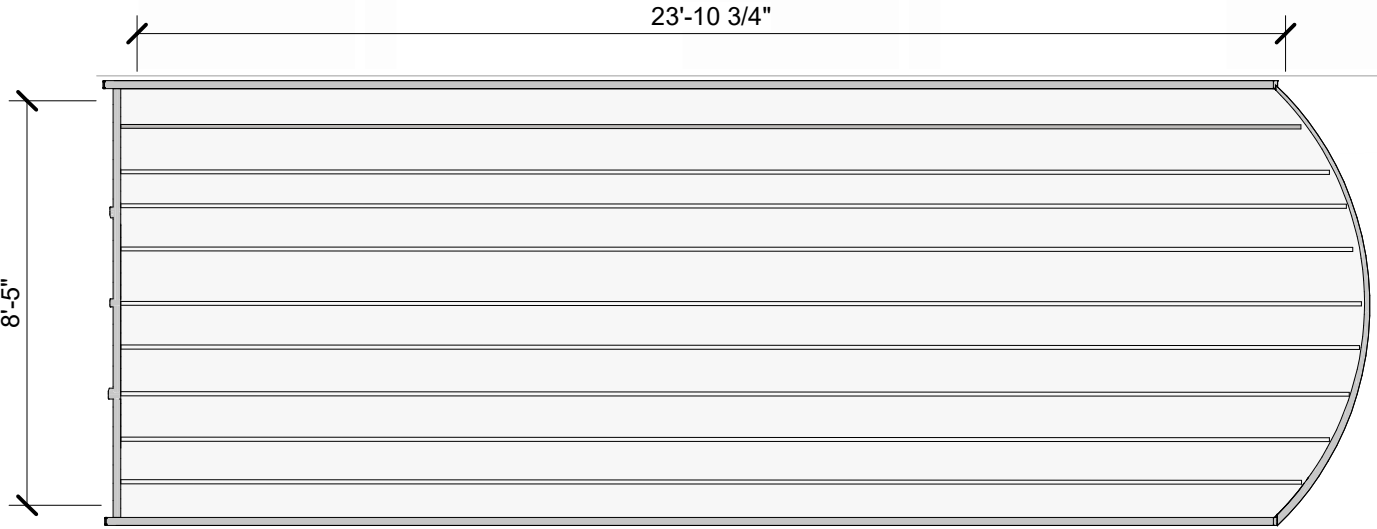
ISSUE DATE:
02/14/2024
SHEET NUMBER:
SK03
OF 99



1
SOUTHWEST CORNER
SK04 SCALE: 1/8" = 1'-0"

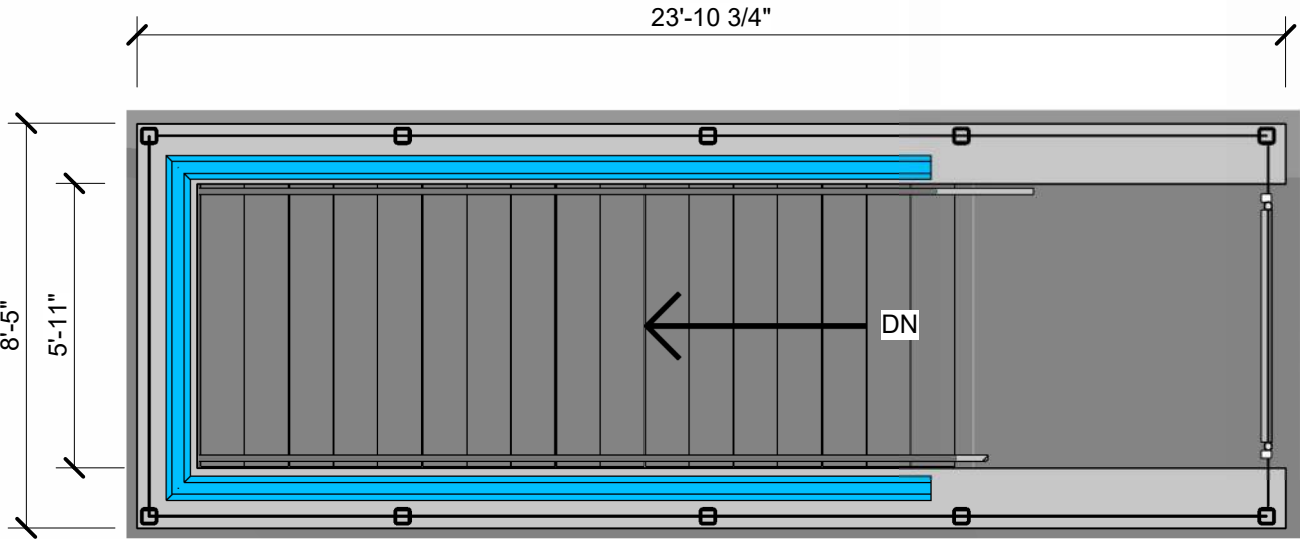


2
SOUTHEAST CORNER
SK04 SCALE: 1/8" = 1'-0"



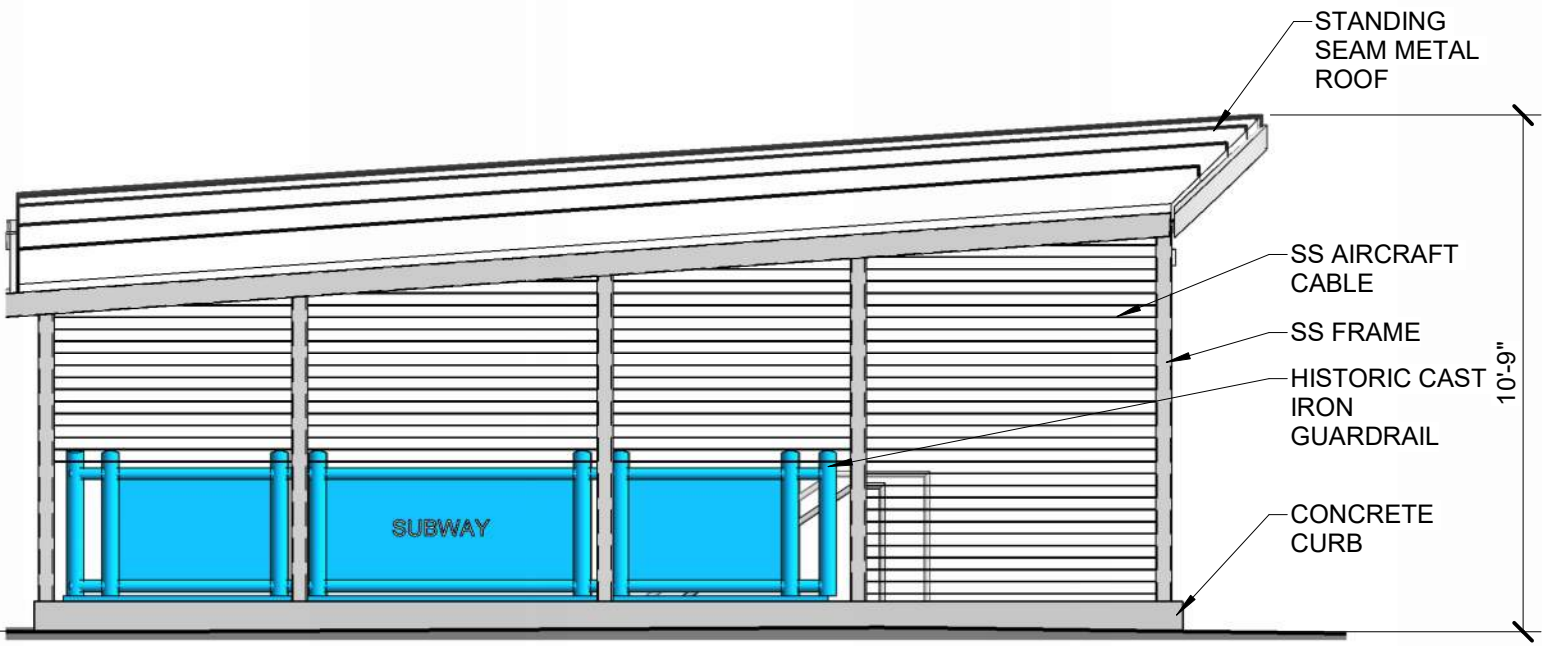
1 **ROOF PLAN - STREET LEVEL HEADHOUSE**

SK05 SCALE: 1/4" = 1'-0"



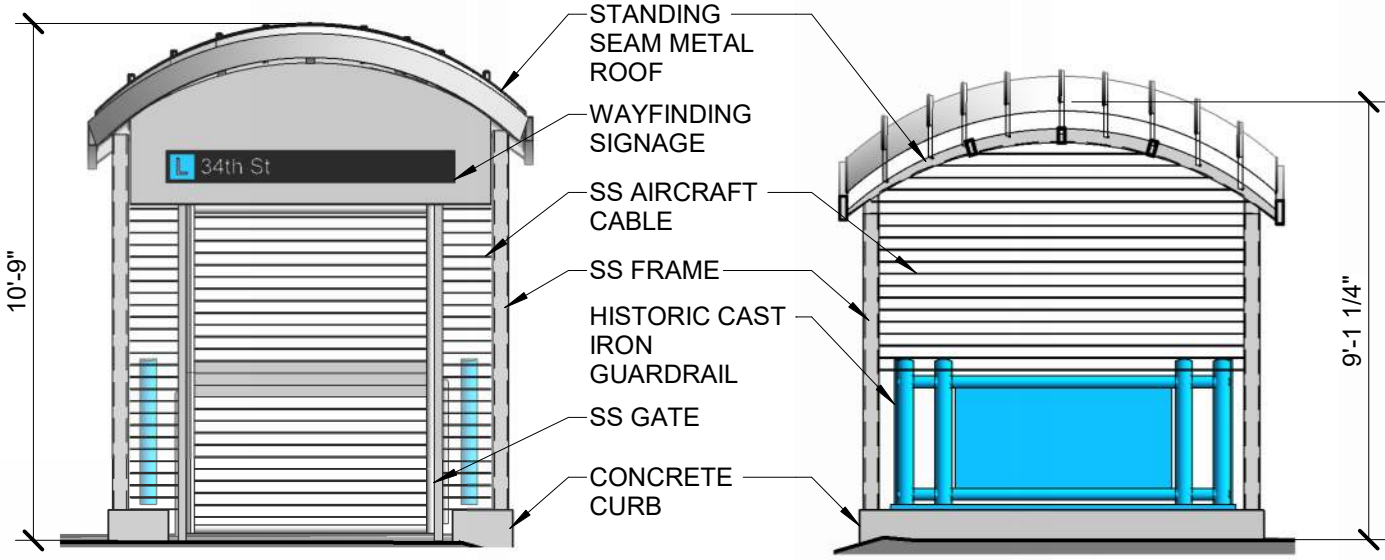
3 **PLAN - STREET LEVEL HEADHOUSE**

SK05 SCALE: 1/4" = 1'-0"



2 **STAIR - NORTH/SOUTH ELEVATION**

SK05 SCALE: 1/4" = 1'-0"



4 **STAIR - EAST ELEVATION**

SK05 SCALE: NTS

5 **STAIR - WEST ELEVATION**

SK05 SCALE: NTS

2/7/2024 3:20:49 PM

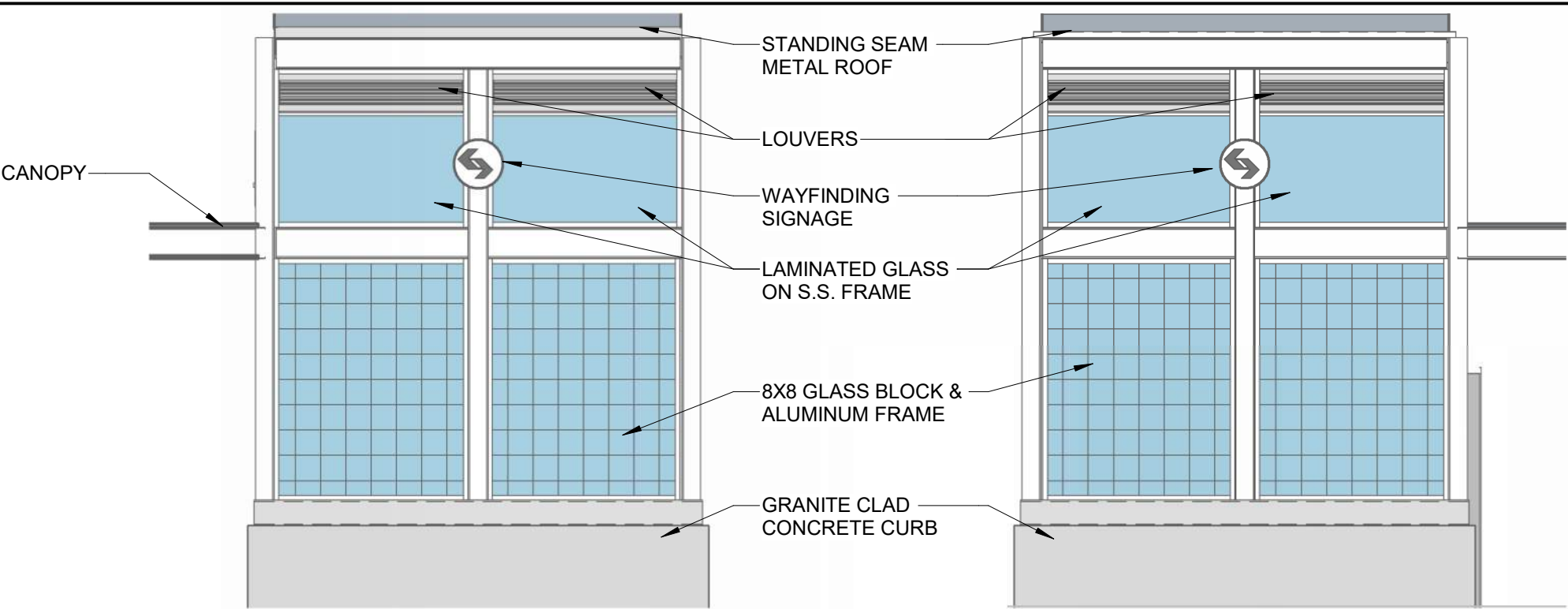
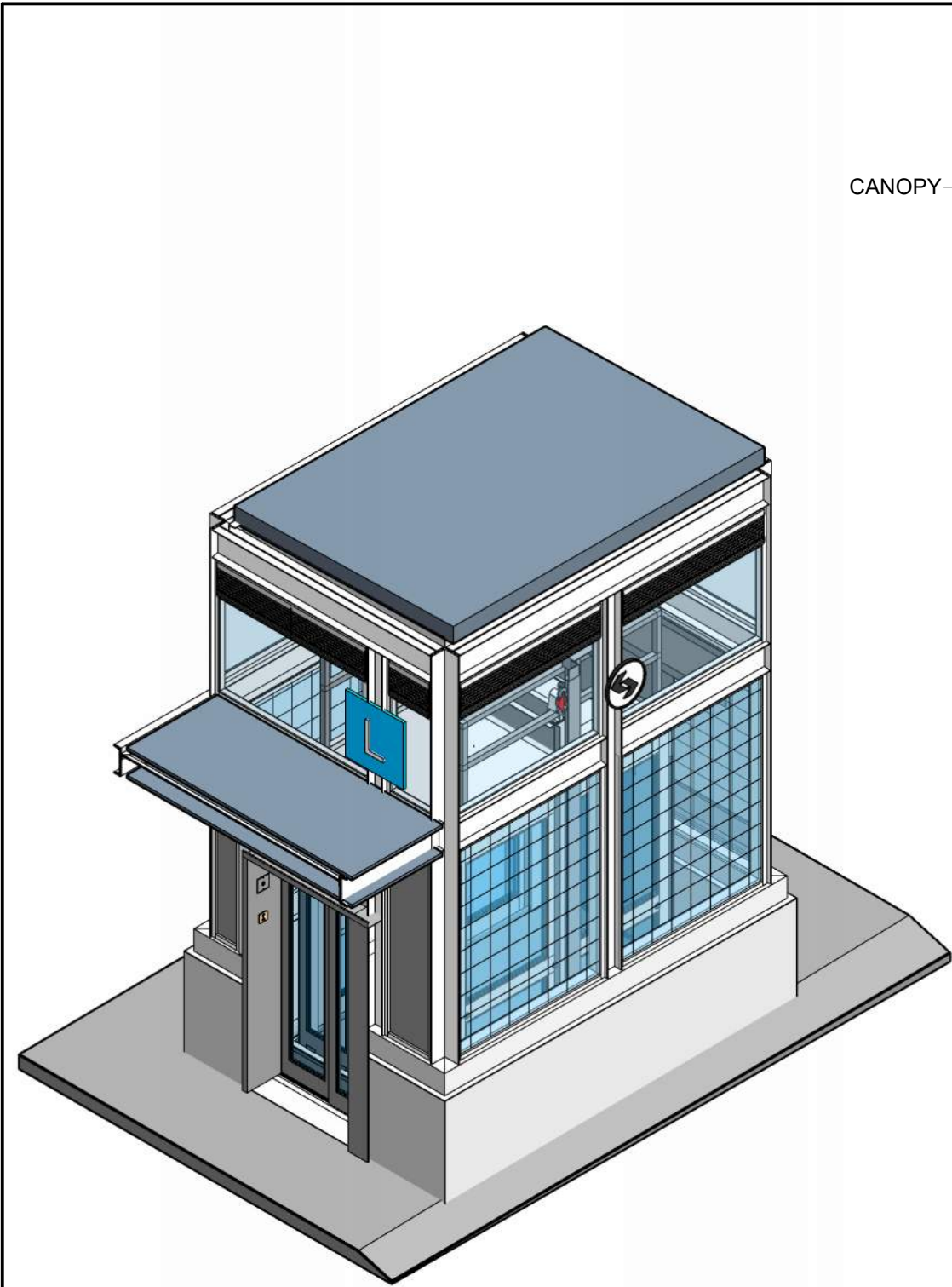


1801 Market Street, Suite 2600
Philadelphia, PA 19103

PROPOSED STAIR HEADHOUSE
SEPTA ADA IMPROVEMENTS
34TH STREET STATION
MARKET FRANKFORD LINE
ART COMMISSION PRESENTATION

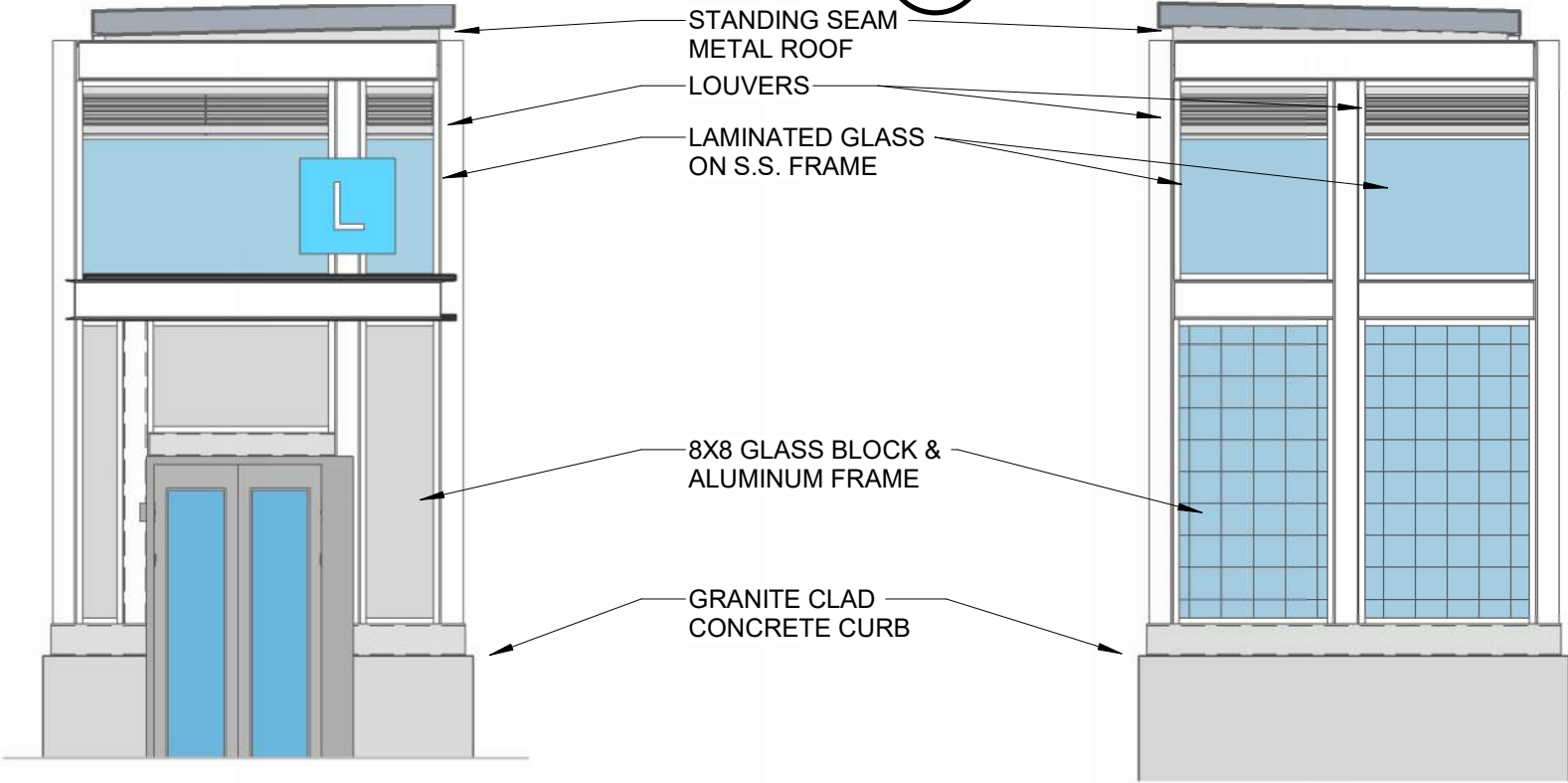
DESIGNED BY: MA
DRAWN BY: NAF
CHECKED BY: TY
APPROVED BY: JCL
SCALE: 1/4" = 1'-0"
PROJECT NO.

ISSUE DATE:
02/14/2024
SHEET NUMBER:
SK05
OF 99



2 ELEVATOR - NORTH ELEVATION
SK06 SCALE: 1/4" = 1'-0"

3 ELEVATOR - SOUTH ELEVATION
SK06 SCALE: 1/4" = 1'-0"



4 ELEVATOR - EAST ELEVATION
SK06 SCALE: 1/4" = 1'-0"

5 ELEVATOR - WEST ELEVATION
SK06 SCALE: 1/4" = 1'-0"

1 ELEVATOR - 3D MASSING
SK06 SCALE: NTS

2/7/2024 3:20:50 PM



2/7/2024 3:20:50 PM

1
SK07

STAIR AND ELEVATOR VIEW - LOOKING NORTHWEST

SCALE: NTS



1801 Market Street, Suite 2600
Philadelphia, PA 19103

PROPOSED 3D VIEW
SEPTA ADA IMPROVEMENTS
34TH STREET STATION
MARKET FRANKFORD LINE
ART COMMISSION PRESENTATION

DESIGNED BY: MA
DRAWN BY: NAF
CHECKED BY: TY
APPROVED BY: JCL
SCALE: NTS
PROJECT NO.

ISSUE DATE:
02/14/2024
SHEET NUMBER:
SK07
OF 99



2/7/2024 3:20:50 PM

1
SK08

STAIR AND ELEVATOR VIEW - LOOKING NORTHWEST NIGHTTIME

SCALE: NTS



1801 Market Street, Suite 2600
Philadelphia, PA 19103

PROPOSED 3D VIEW
SEPTA ADA IMPROVEMENTS
34TH STREET STATION
MARKET FRANKFORD LINE
ART COMMISSION PRESENTATION

DESIGNED BY: MA
DRAWN BY: NAF
CHECKED BY: TY
APPROVED BY: JCL
SCALE: NTS
PROJECT NO.

ISSUE DATE:
02/14/2024
SHEET NUMBER:
SK08
OF 99



2/7/2024 3:20:50 PM

1
SK09

STAIR AND ELEVATOR VIEW - LOOKING SOUTHEAST

SCALE: NTS



1801 Market Street, Suite 2600
Philadelphia, PA 19103

PROPOSED 3D VIEW
SEPTA ADA IMPROVEMENTS
34TH STREET STATION
MARKET FRANKFORD LINE
ART COMMISSION PRESENTATION

DESIGNED BY: MA
DRAWN BY: NAF
CHECKED BY: TY
APPROVED BY: JCL
SCALE: NTS
PROJECT NO.

ISSUE DATE:
02/14/2024
SHEET NUMBER:
SK09
OF 99



2/7/2024 3:20:50 PM

1
SK10

STAIR AND ELEVATOR VIEW - LOOKING SOUTHEAST NIGHTTIME

SCALE: NTS

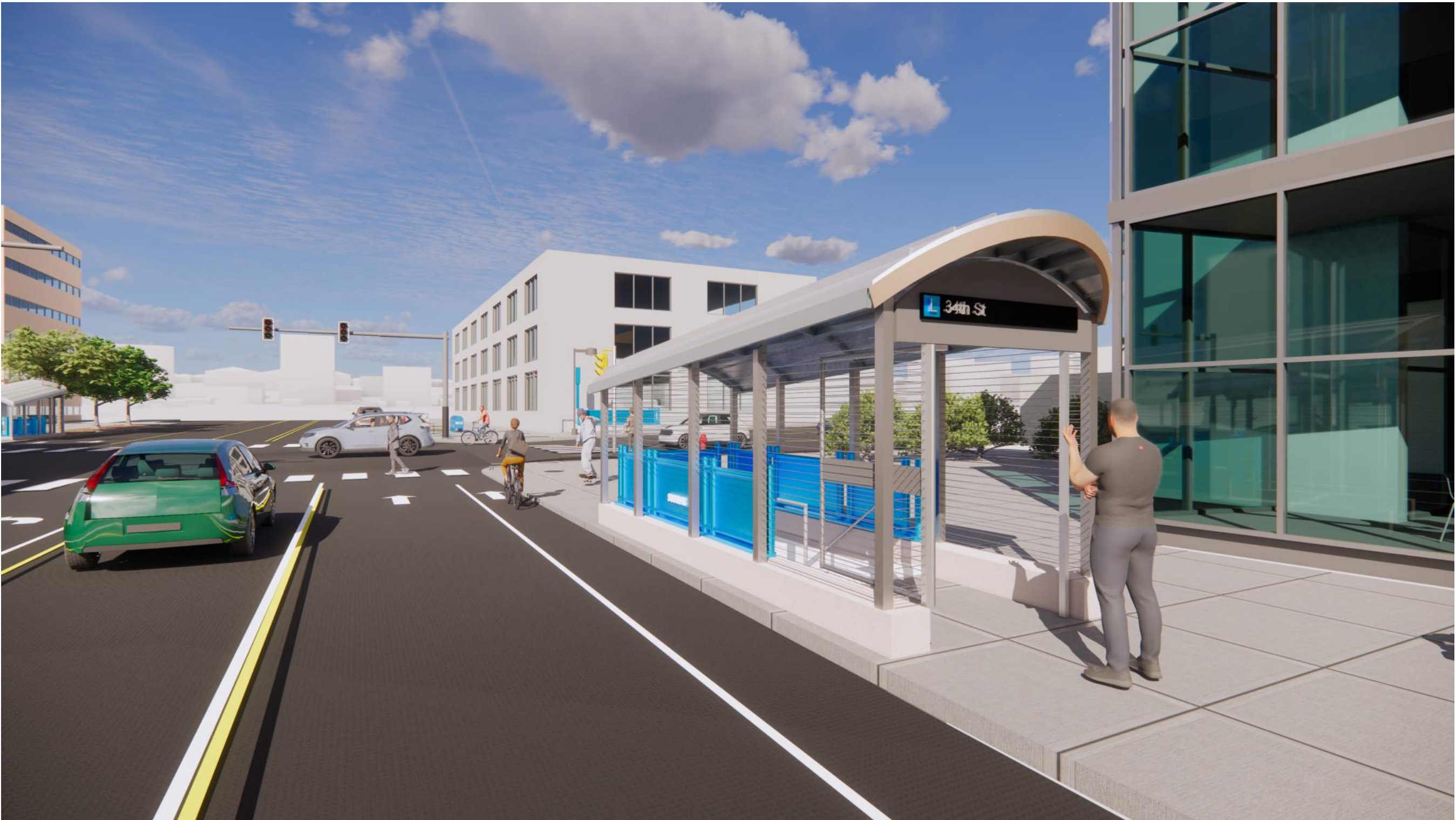


1801 Market Street, Suite 2600
Philadelphia, PA 19103

PROPOSED 3D VIEW
SEPTA ADA IMPROVEMENTS
34TH STREET STATION
MARKET FRANKFORD LINE
ART COMMISSION PRESENTATION

DESIGNED BY: MA
DRAWN BY: NAF
CHECKED BY: TY
APPROVED BY: JCL
SCALE: NTS
PROJECT NO.

ISSUE DATE:
02/14/2024
SHEET NUMBER:
SK10
OF 99



1
SK11

STAIR VIEW - LOOKING NORTHWEST

SCALE: NTS

2/7/2024 3:20:51 PM



1801 Market Street, Suite 2600
Philadelphia, PA 19103

PROPOSED 3D VIEW
SEPTA ADA IMPROVEMENTS
34TH STREET STATION
MARKET FRANKFORD LINE
ART COMMISSION PRESENTATION

DESIGNED BY: MA
DRAWN BY: NAF
CHECKED BY: TY
APPROVED BY: JCL
SCALE: NTS
PROJECT NO.

ISSUE DATE:
02/14/2024
SHEET NUMBER:
SK11
OF 99



2/7/2024 3:20:51 PM

1
SK12

STAIR VIEW - LOOKING NORTHWEST NIGHTTIME

SCALE: NTS



1801 Market Street, Suite 2600
Philadelphia, PA 19103

PROPOSED 3D VIEW
SEPTA ADA IMPROVEMENTS
34TH STREET STATION
MARKET FRANKFORD LINE
ART COMMISSION PRESENTATION

DESIGNED BY: MA
DRAWN BY: NAF
CHECKED BY: TY
APPROVED BY: JCL
SCALE: NTS
PROJECT NO.

ISSUE DATE:
02/14/2024
SHEET NUMBER:
SK12
OF 99



1 **EXISTING CONDITIONS SOUTHWEST CORNER**
SK13 SCALE: NTS



2 **EXISTING CONDITIONS SOUTHEAST CORNER**
SK13 SCALE: NTS



3 **EXISTING CONDITIONS NORTHWEST CORNER**
SK13 SCALE: NTS



4 **EXISTING CONDITIONS NORTHEAST CORNER**
SK13 SCALE: NTS

2/7/2024 3:20:52 PM



1
SK14

PROPOSED MATERIALS

SCALE: NTS