

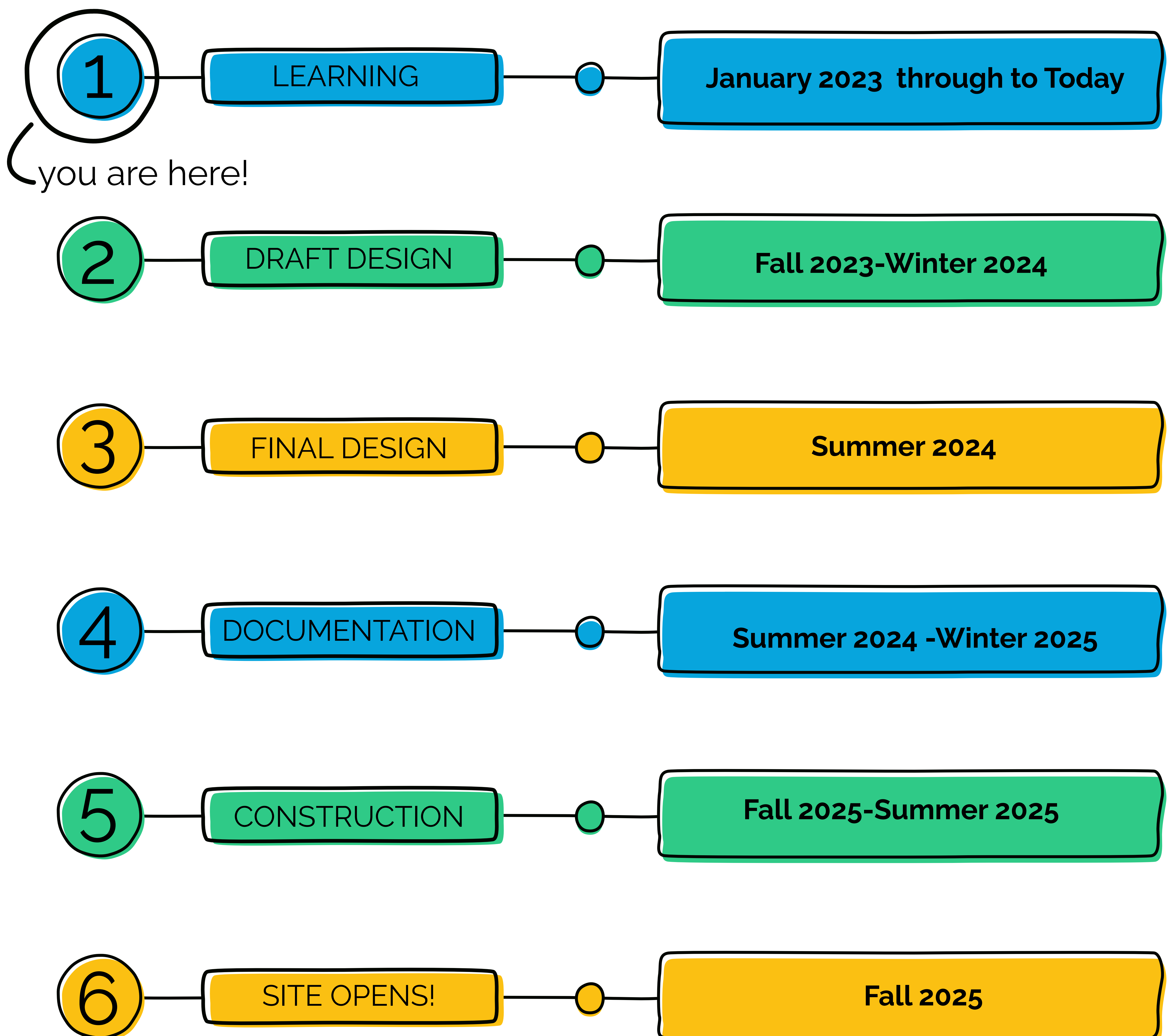
WELCOME!

What is **Rebuild**?

Building stronger communities, one park, recreation center, and library at a time.

The Rebuild program is investing hundreds of millions of dollars in Philadelphia's parks, recreation centers, and libraries. Made possible by the Philadelphia Beverage Tax, Rebuild prioritizes sites in high-need neighborhoods, as well as sites that are in extremely poor condition.

Here's Where We Are In The Playground Timeline



WHAT WE'VE LEARNED

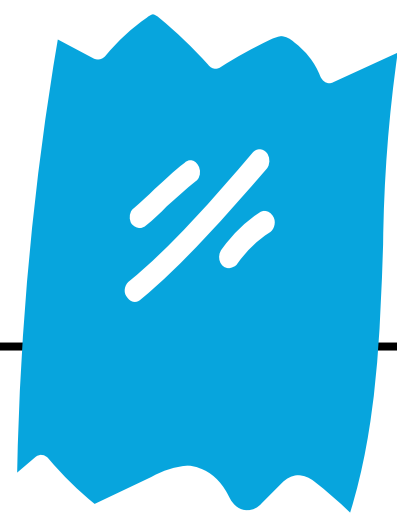
Listening sessions held January 2023 through June 2023 with stakeholder groups such as

- West Mill Creek Playground Advisory Council
- Friends of West Mill Creek
- West Philadelphia Together

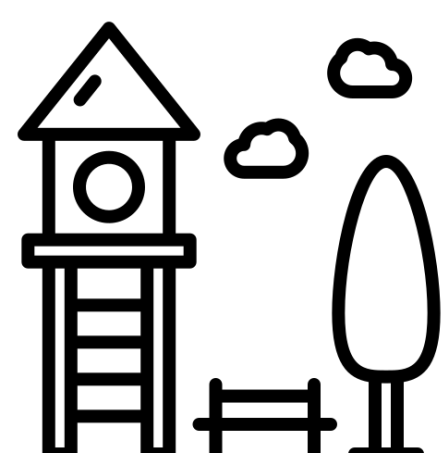
Key findings from the community engagement process so far:



Playground



- Playground is most utilized part of the site
- Playground used for neighborhood reunions, movie nights, Halloween events.
- Residents would like a new play surface, more lighting, activities for teens and new sliding boards
- A new play surface is needed



Basketball Court



- Not currently used - ground is uneven, weeds are growing, debris, rim is missing a bolt, and because it's a non-regulation court.
- When it was in good condition, youth and adults from different areas would play
- Top repair priority! Fixing the basketball court early could allow us to start a league
- Graffiti art on wall gets covered by CLIP, then re-painted by WMC youth



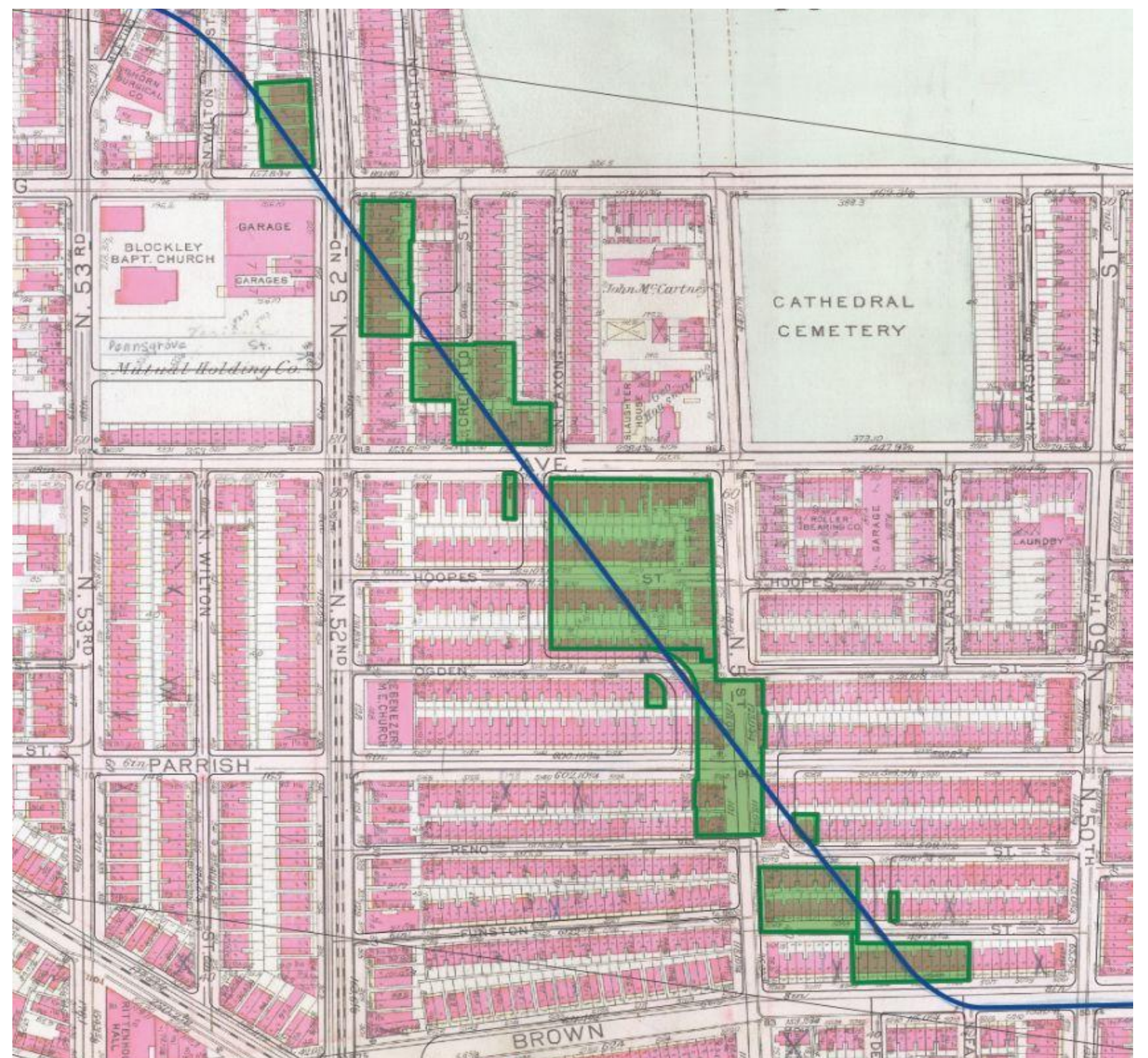
Playground History



The Mill Creek was covered by a 20ft diameter sewer culvert in the 1880s for the sake of public health and sanitation. Earth was filled in ovetop and by the 1920s houses were constructed.

A series of house and street collapses occurred over the culvert, from the 1930's to the 1960s. Many parcels were condemned and deeded to the City of Philadelphia. Restrictions were placed on future development. Some of the largest parcels were combined to make up the West Mill Creek Playground.

Since the culvert collapse, new foundations and structures can not be constructed over the culvert for safety reasons.



Basketball Court Improvements

First Fixes

- Repair / replace sections of the wall
- Remove invasive plant growth behind the wall
- Repair / replace sections of chain link fence above the wall
- Replace ground materials behind the wall deter new plant growth
- Repaint masonry wall

**Expedited
Timeline
for the Courts
Renovation**

**Basketball Court Design &
Documentation**

4-6 Months

Bid

4 months

Construction

4-6 months

**Courts
Reopen
Anticipated
Early Fall 2024**



What are your thoughts about repairing and repainting the wall?



Basketball Court Improvements



Large and small retaining wall repairs

New players benches

New landscaping at existing planters

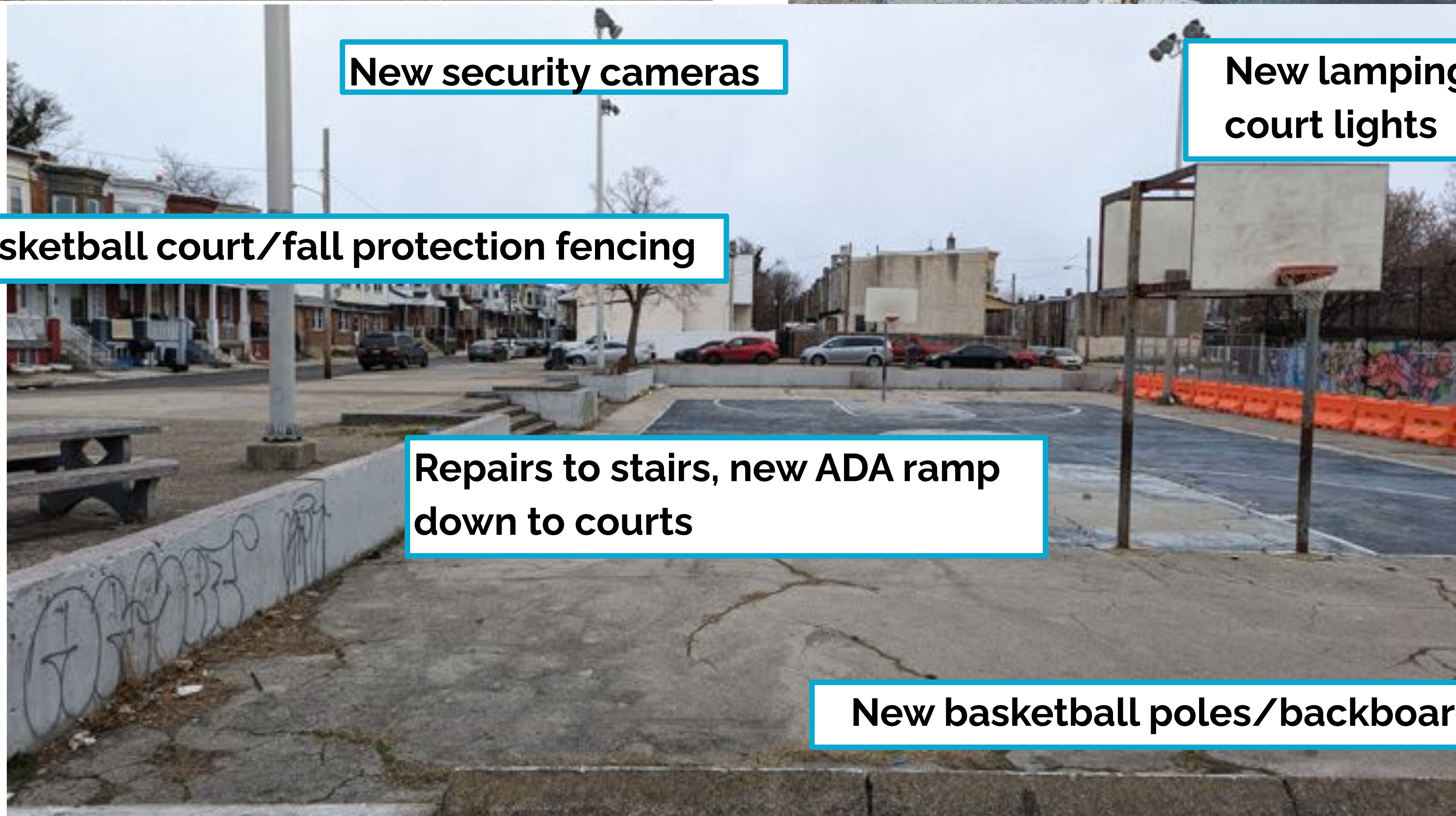


New basketball court/fall protection fencing

New line striping



Court asphalt replacement (full-depth)



New security cameras

New lamping at existing court lights

New basketball court/fall protection fencing

Repairs to stairs, new ADA ramp down to courts

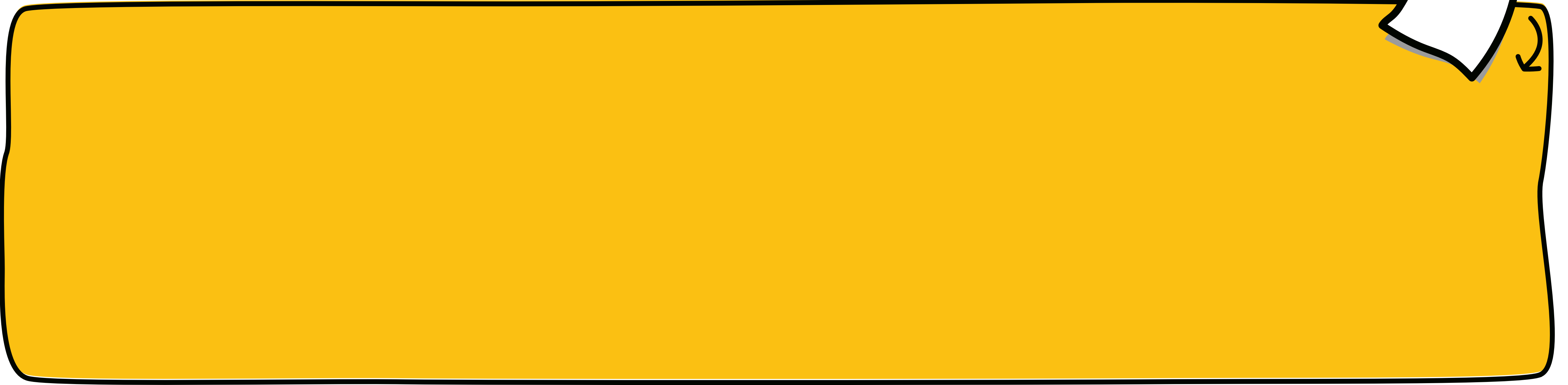
New basketball poles/backboards/hoops

Trash cans, bike racks, new PPR site signage

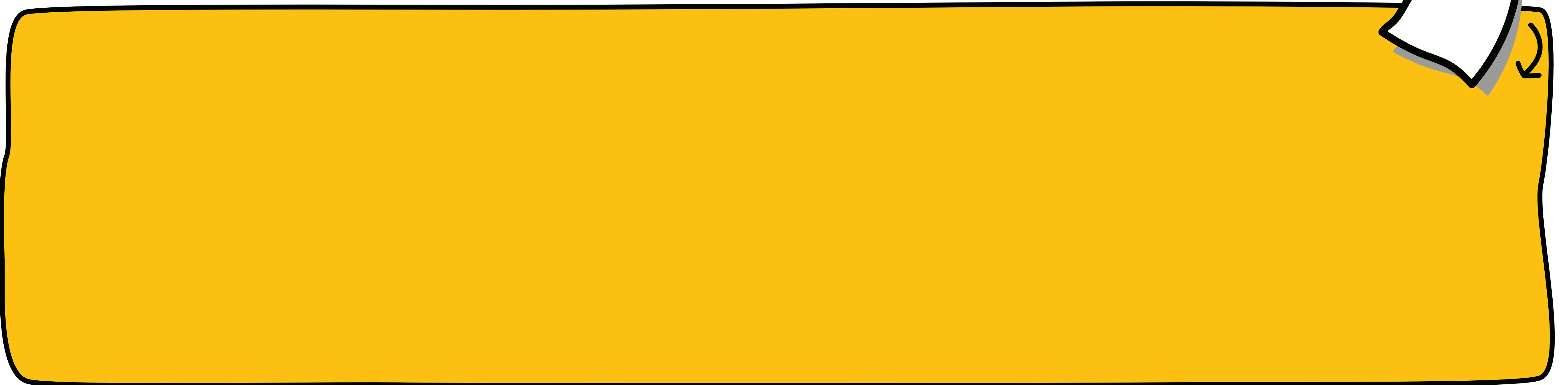
Basketball Court

HOW DO YOU USE IT?

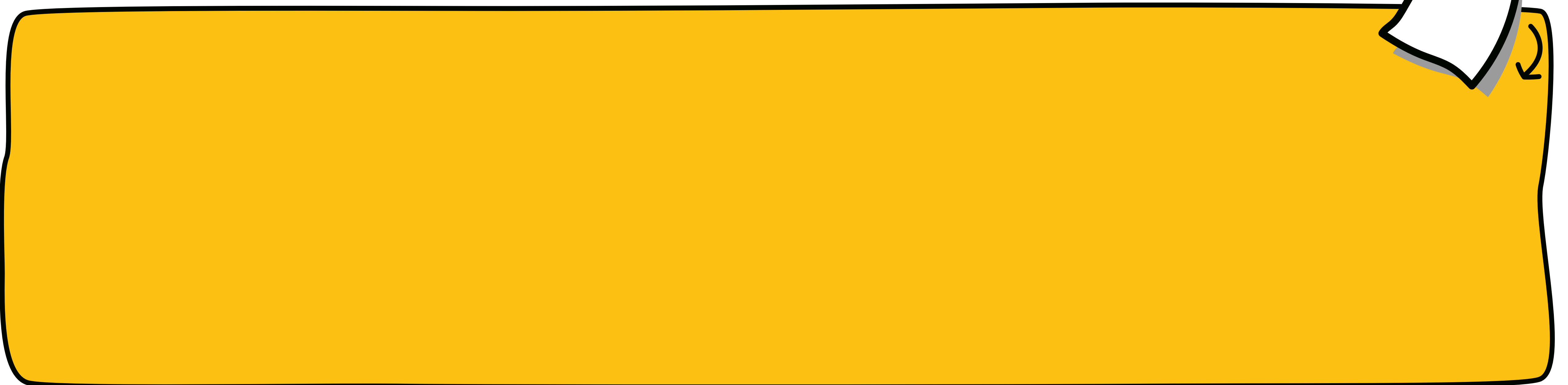
What time of day do you use the court?




How do you play? (team, informal with friends, one-on-one, etc.?)



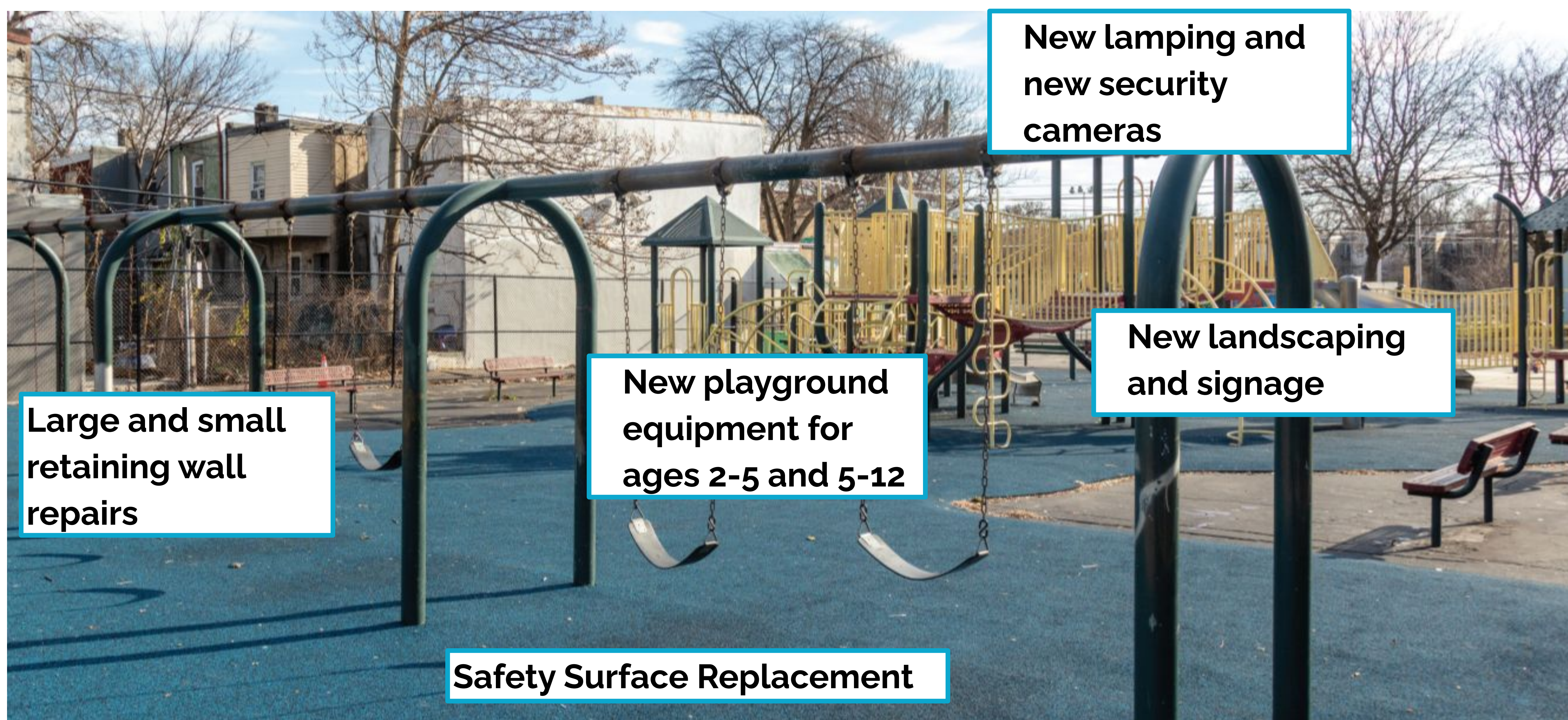
Where do people sit when they're watching basketball?



Do you use the court for other activities?



West Mill Creek Playground Improvements



New lamping and new security cameras

New landscaping and signage

Large and small retaining wall repairs

New playground equipment for ages 2-5 and 5-12

Safety Surface Replacement

New benches, picnic tables, trash cans, bike racks



Additional Playground Improvements

- Repairs to stairs, ramps, retaining walls
- Landscaping and dead tree removal
- Grading, drainage, stormwater improvements
- New security cameras
- New PPR site signage
- Improve existing lights

Playground Feedback

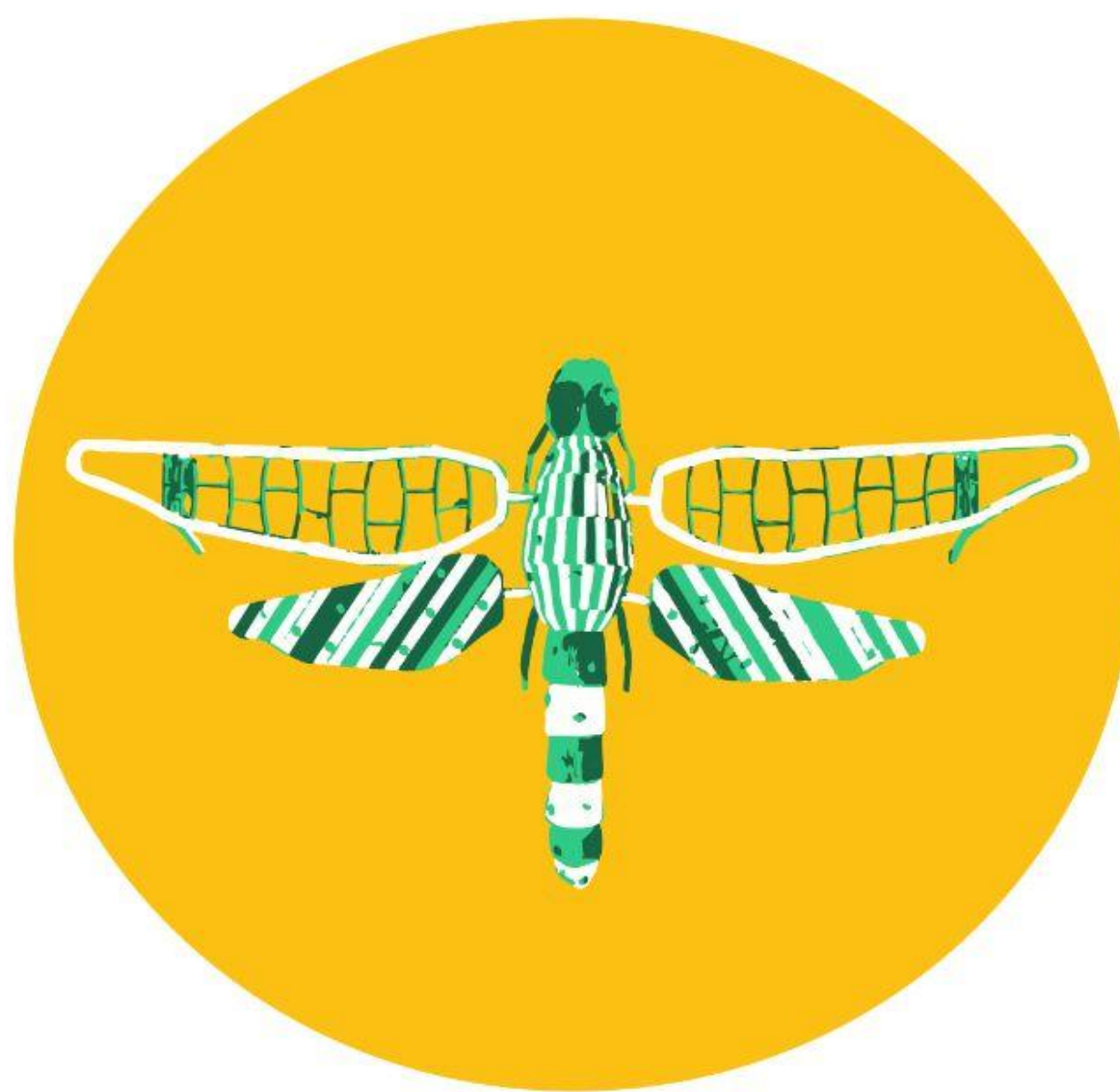
Tell us what qualities are important in a new playground

THEMES:



Boats and Water

○ ○ ○ ○ ○ ○ ○ ○ ○ ○
○ ○ ○ ○ ○ ○ ○ ○ ○ ○
○ ○ ○ ○ ○ ○ ○ ○ ○ ○



Animals and Insects

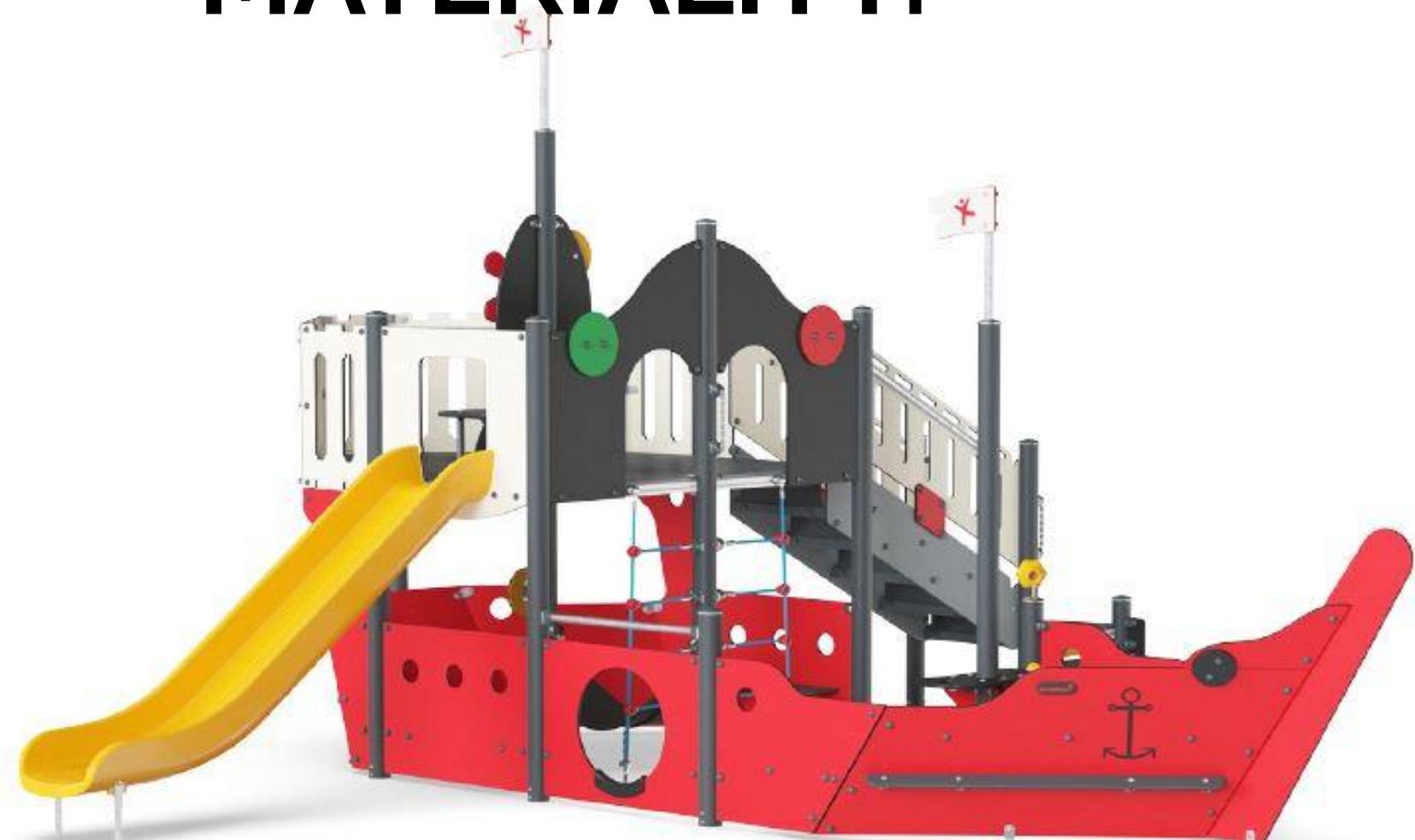
○ ○ ○ ○ ○ ○ ○ ○ ○ ○
○ ○ ○ ○ ○ ○ ○ ○ ○ ○
○ ○ ○ ○ ○ ○ ○ ○ ○ ○



Forts and Treehouses

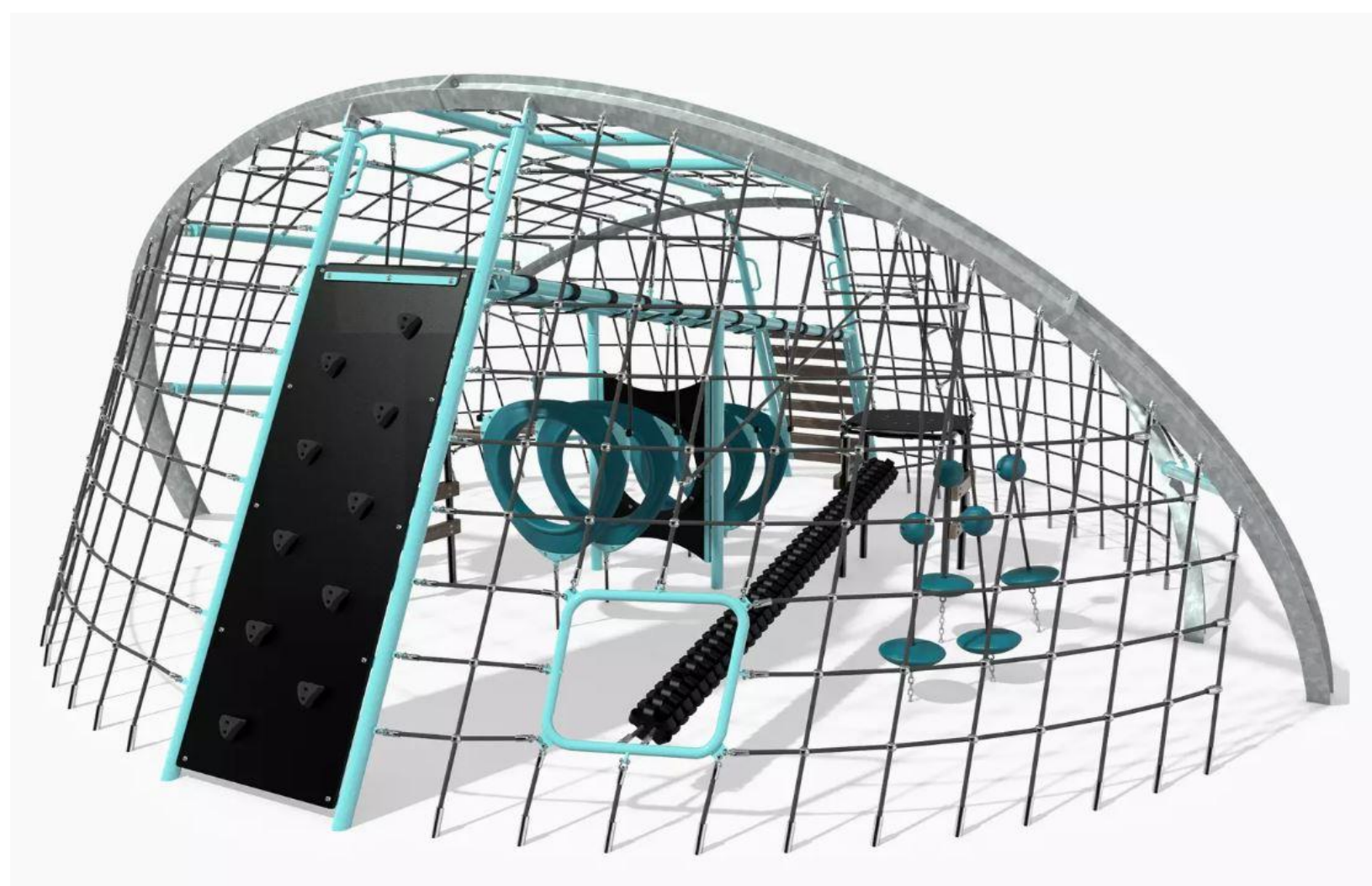
○ ○ ○ ○ ○ ○ ○ ○ ○ ○
○ ○ ○ ○ ○ ○ ○ ○ ○ ○
○ ○ ○ ○ ○ ○ ○ ○ ○ ○

MATERIALITY:



Contemporary Materials

○ ○ ○ ○ ○ ○ ○ ○ ○ ○
○ ○ ○ ○ ○ ○ ○ ○ ○ ○
○ ○ ○ ○ ○ ○ ○ ○ ○ ○



Modern Netting and Steel

○ ○ ○ ○ ○ ○ ○ ○ ○ ○
○ ○ ○ ○ ○ ○ ○ ○ ○ ○
○ ○ ○ ○ ○ ○ ○ ○ ○ ○



Nature Inspired Materials

○ ○ ○ ○ ○ ○ ○ ○ ○ ○
○ ○ ○ ○ ○ ○ ○ ○ ○ ○
○ ○ ○ ○ ○ ○ ○ ○ ○ ○

COLORS:



Warm Colors

○ ○ ○ ○ ○ ○ ○ ○ ○ ○
○ ○ ○ ○ ○ ○ ○ ○ ○ ○
○ ○ ○ ○ ○ ○ ○ ○ ○ ○



Cool Blues

○ ○ ○ ○ ○ ○ ○ ○ ○ ○
○ ○ ○ ○ ○ ○ ○ ○ ○ ○
○ ○ ○ ○ ○ ○ ○ ○ ○ ○



Vibrant Greens

○ ○ ○ ○ ○ ○ ○ ○ ○ ○
○ ○ ○ ○ ○ ○ ○ ○ ○ ○
○ ○ ○ ○ ○ ○ ○ ○ ○ ○

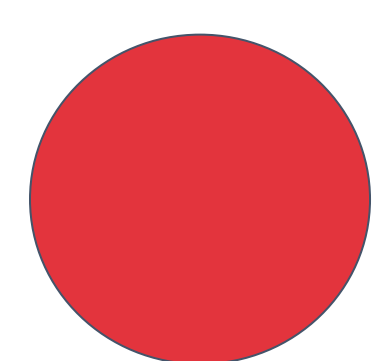
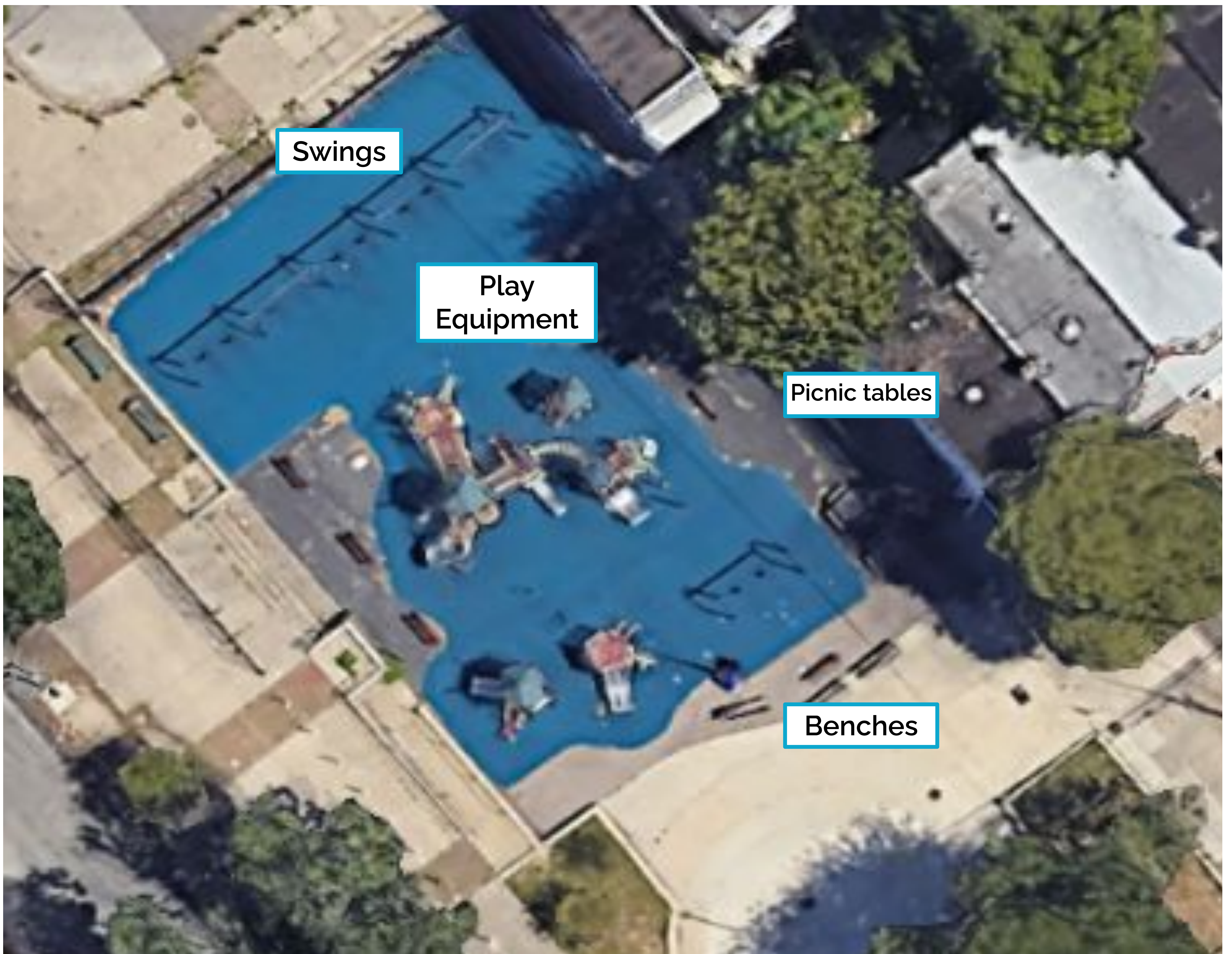


Natural Colors

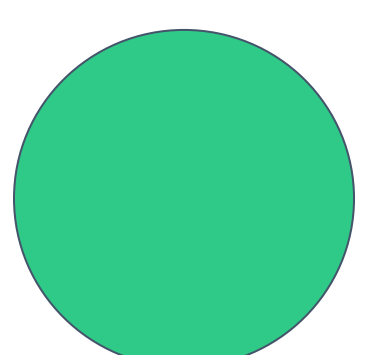
○ ○ ○ ○ ○ ○ ○ ○ ○ ○
○ ○ ○ ○ ○ ○ ○ ○ ○ ○
○ ○ ○ ○ ○ ○ ○ ○ ○ ○

Playground Feedback

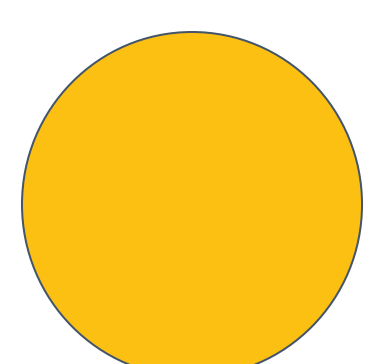
Tell us what qualities are important in a new playground



Is there a part of the playground you never use?
Place a Red Dot on the map



What part of the playground do you use the most?
Place a Green Dot on the map



What is the part you want to change the most?
Place a Yellow Dot on the map

Playground Feedback

What would you like to do at the playground? *Place a dot by the activity:*

Climb

Learn

Spin

Make Music

Slide

Crawl

Swing

Balance

Other?

