



# VINCENT G. PANATI PLAYGROUND



Rebuild and Philadelphia Parks & Recreation

**COMMUNITY UPDATE**  
SEPTEMBER 7, 2023



DESIGN TEAM



**CORE PROJECT PRINCIPLES:**

- **CREATE** a safe, welcoming and inspiring home base for youth-centered programming and community events.
- **SUPPORT** robust after-school experiences for teens by providing spaces for indoor recreation, creative technology, and flexible learning.
- **PROVIDE** a high quality community kitchen facility.



BIRDS EYE VIEW OF PANATI PLAYGROUND LOOKING NE



VIEW OF BASKETBALL COURTS ALONG LIPPINCOTT ST



VIEW OF PLAYGROUND ENTRANCE ALONG 22ND ST



VIEW OF WEST ELEVATION



VIEW OF NORTH ELEVATION



VIEW OF EAST ELEVATION FROM TRACK



VIEW OF SPRAY PARK



VIEW OF PLAYGROUND ALONG 22ND ST



VIEW OF BASKETBALL COURTS ALONG LIPPINCOTT ST



VIEW FROM LOBBY INTO MULTIPURPOSE SPACE AND OFFICE



VIEW OF MULTIPURPOSE SPACE



VIEW OF MULTIPURPOSE SPACE - COMPUTER AREA



VIEW OF LOBBY



VIEW OF MULTIPURPOSE SPACE

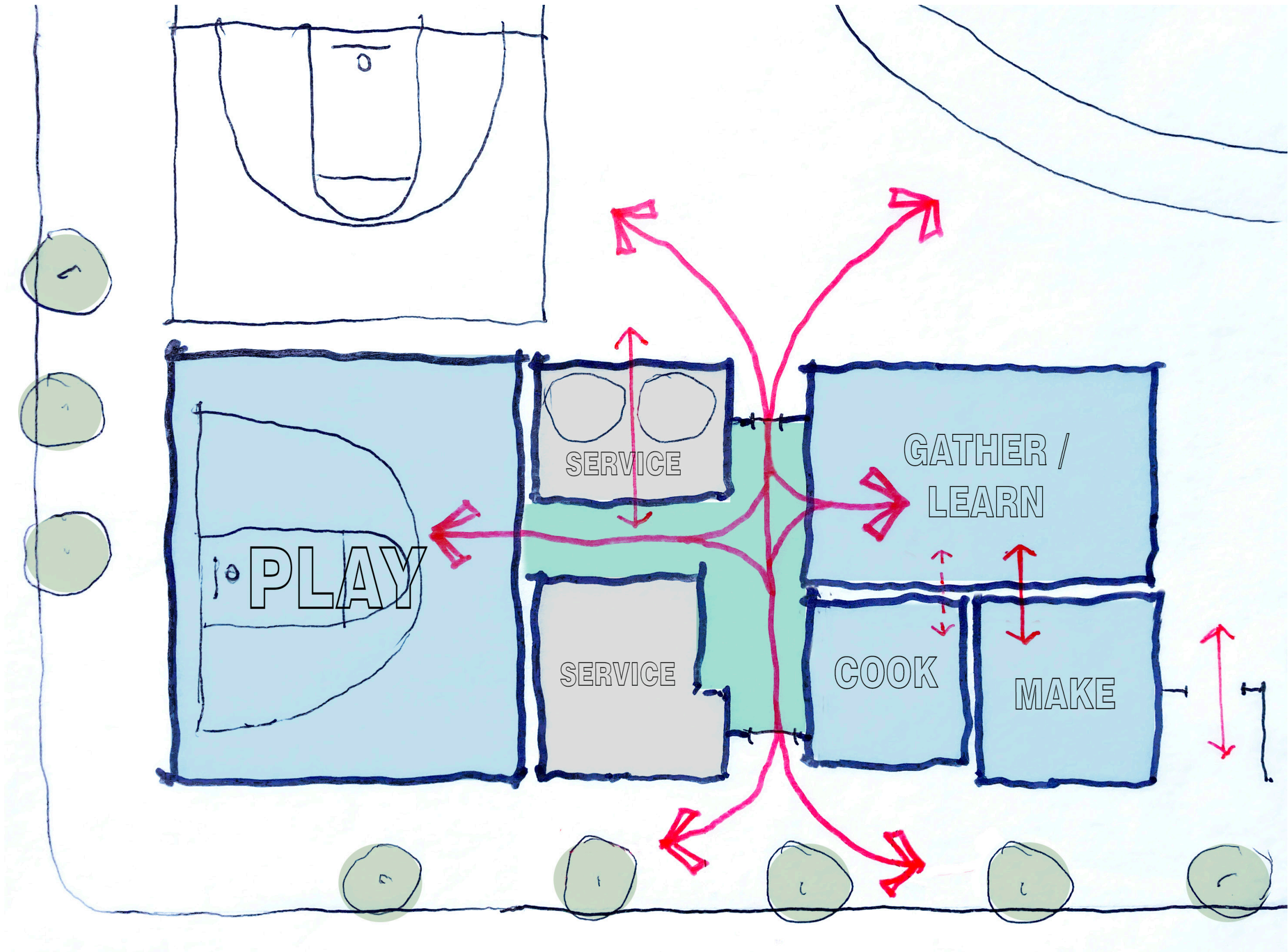


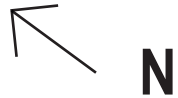
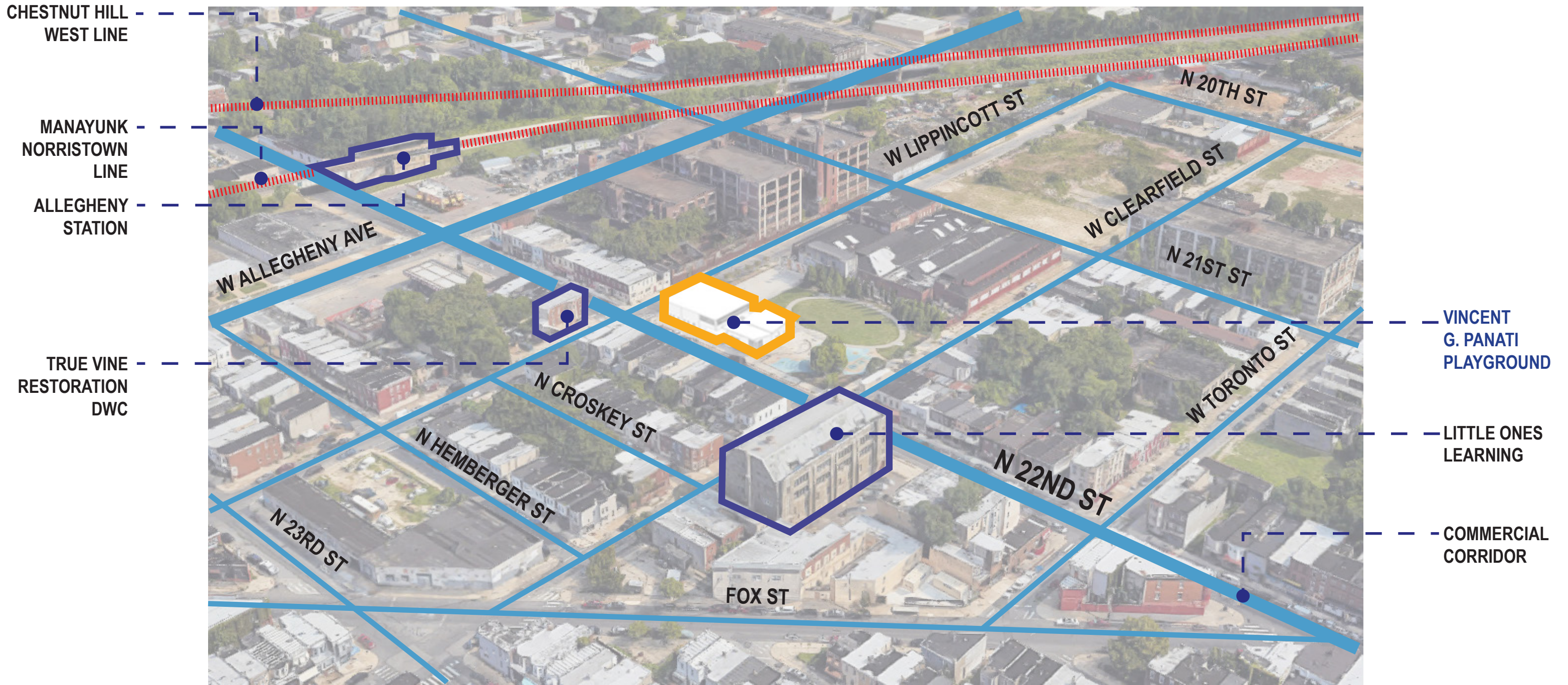
VIEW OF MULTIPURPOSE SPACE - KITCHEN AREA

# Community Visioning and Feedback



\*MODIFIED IMAGE COURTESY OF COMMUNITY DESIGN COLLABORATIVE REPORT





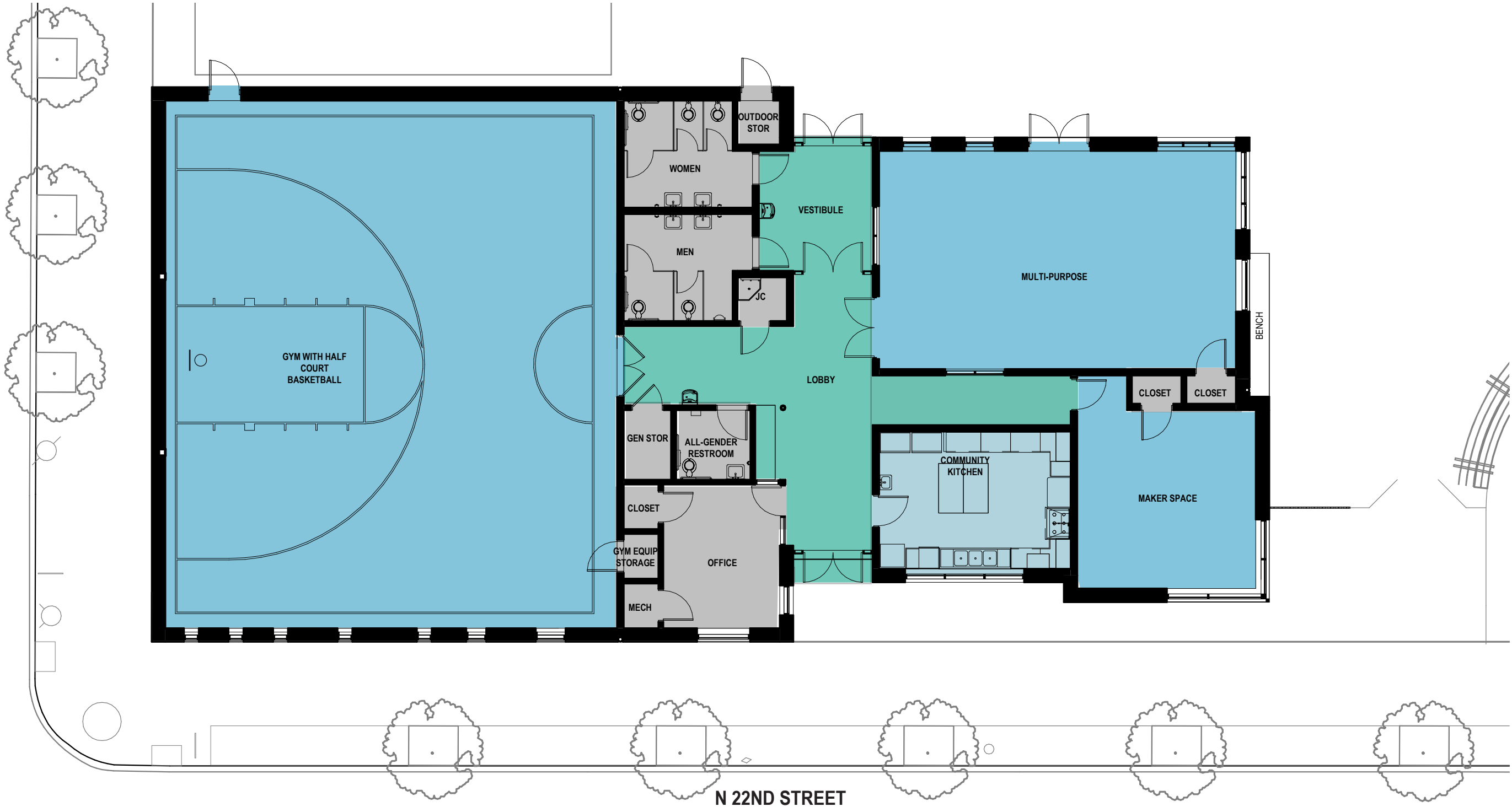


DEMOLISH HALF OF EXISTING COURT, BASKETBALL HOOPS, SITE LIGHT, AND PERIMETER OF FENCE/CURB

COMPLETE DEMOLITION OF ONE STORY BUILDING AND SLAB ON GRADE



W LIPPINCOTT STREET



PROGRAM SPACE
  CIRCULATION
  SERVICE
  KITCHEN

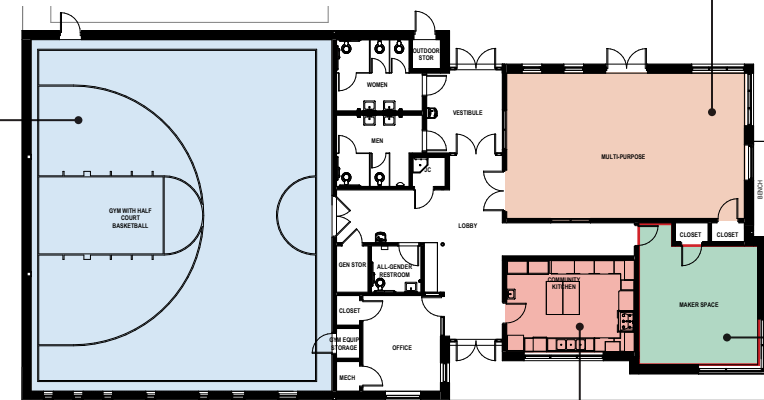




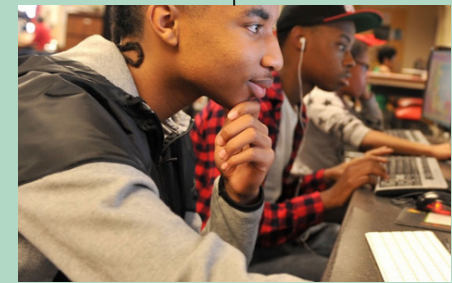
PLAY



GATHER/  
LEARN

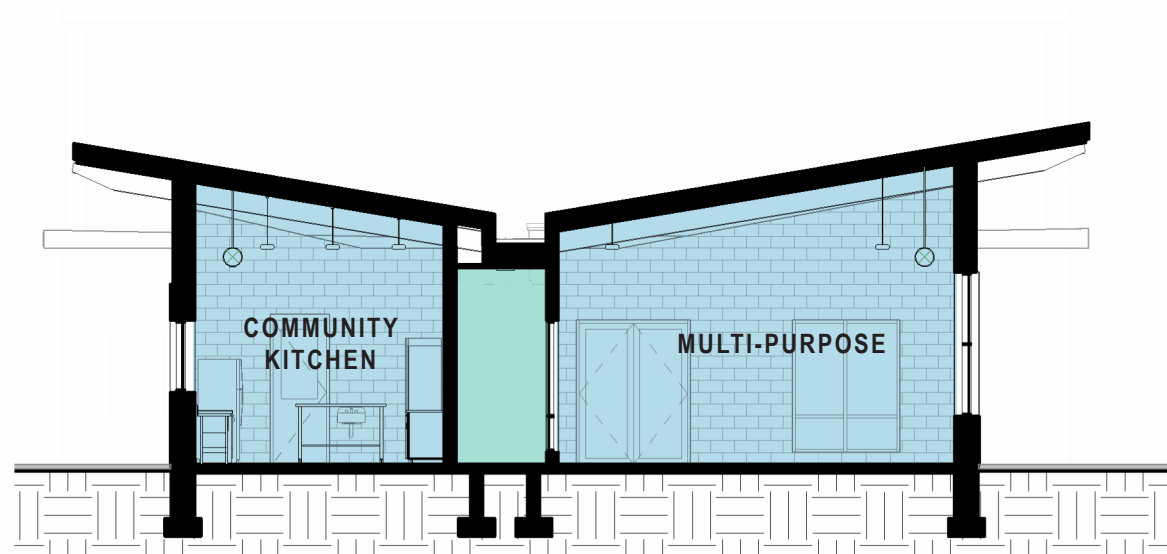


COOK

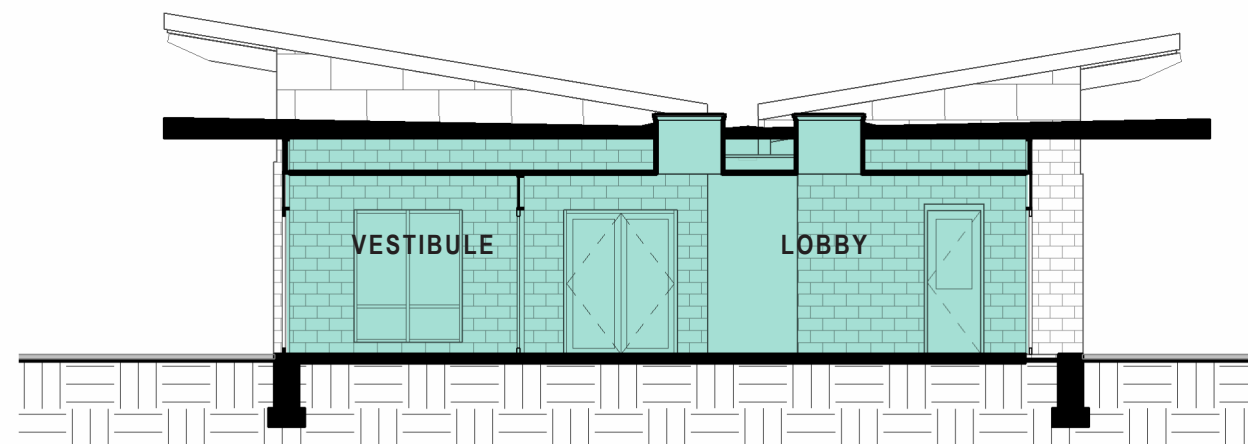


MAKE

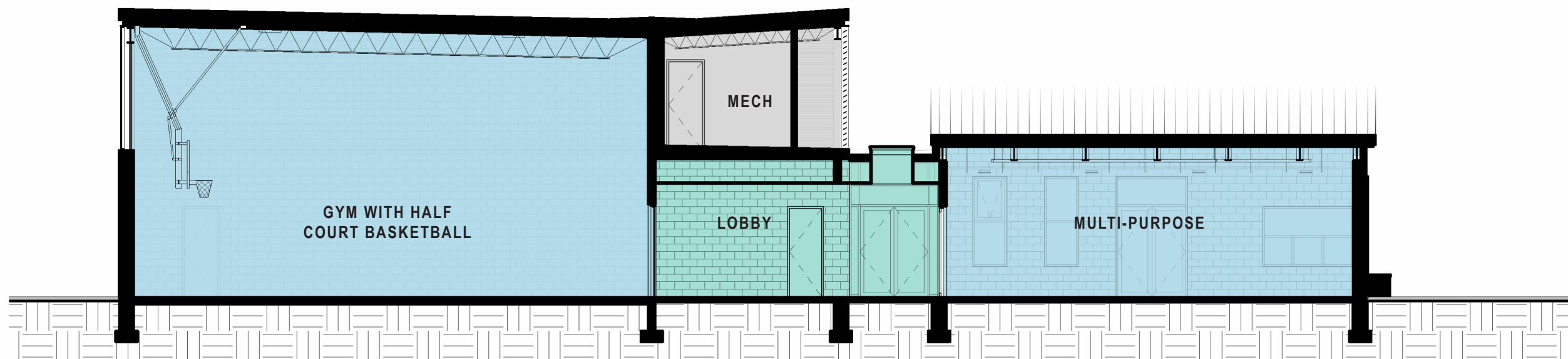
\*IMAGES COURTESY OF CDC REPORT & ISTOCK PHOTOS



**CROSS SECTION AT KITCHEN AND MULTIPURPOSE**



**CROSS SECTION AT LOBBY**



**LONGITUDINAL SECTION**



- PROGRAM SPACE
- CIRCULATION
- SERVICE/ADMIN







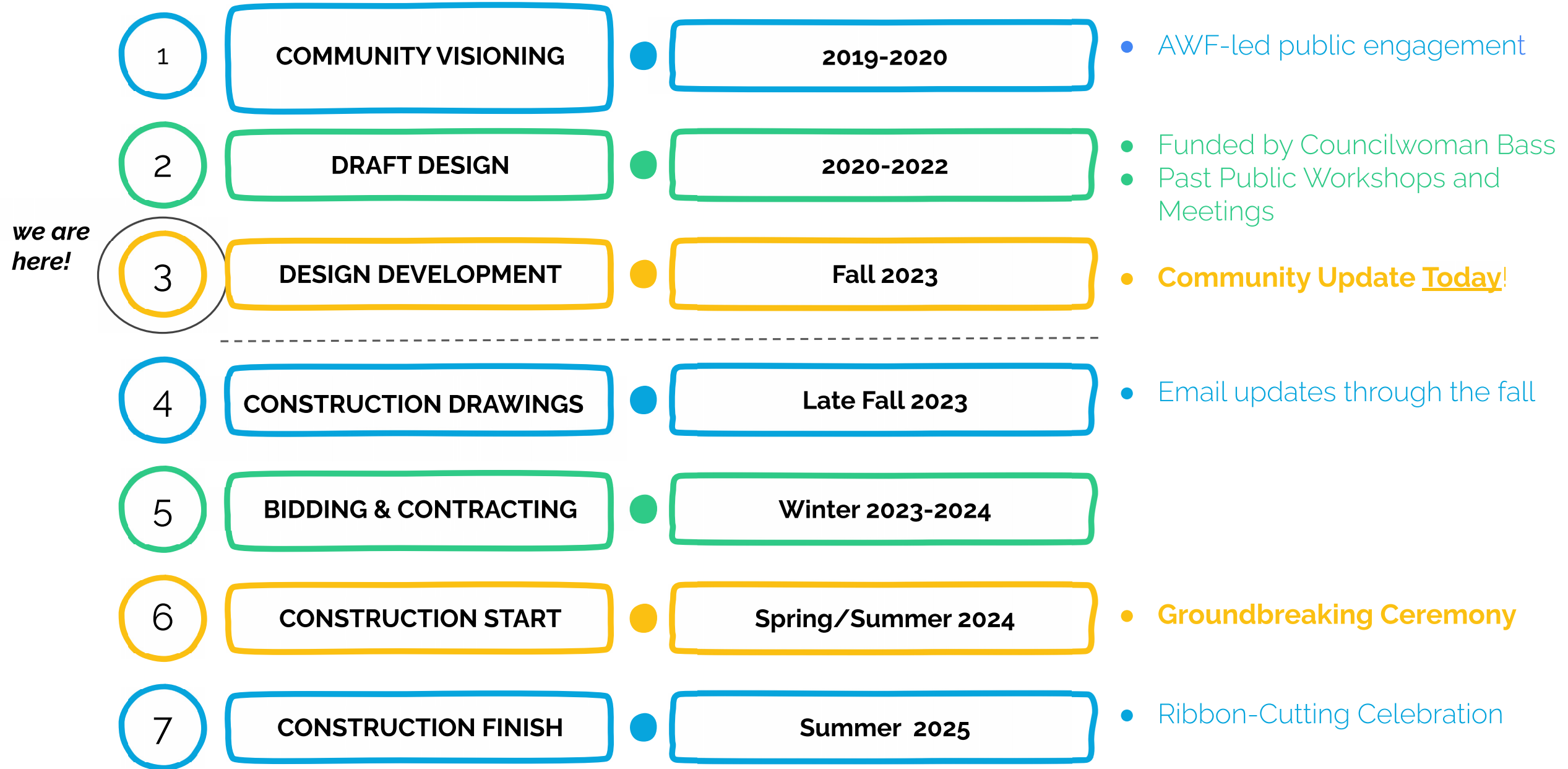




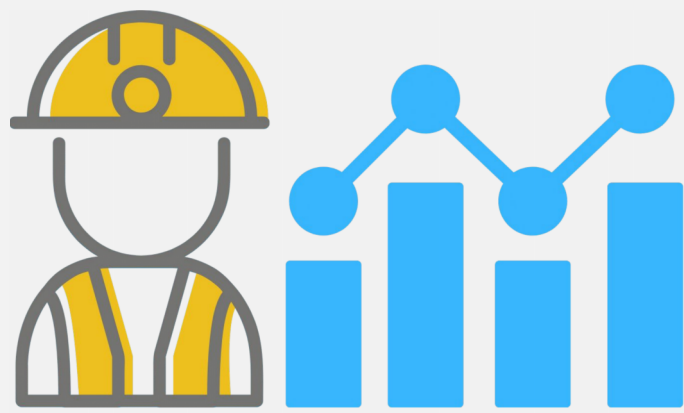




# Panati Playground Timeline



Fall 2023 Update



# Rebuild Participation Goals

## Professional Services

*Architecture, Design, Community Engagement, Training & Coaching*

### Contract Participation Goals

- 25-30% MBE
- 15-20% WBE

## Construction Services

*Demolition, Sitework, MEP, General Contracting, Trades Contracting*

### Contract Participation Goals

- 30-35% MBE
- 15-20% WBE

### Workforce Participation Goals

**JOURNEYPERSONS**  
(45% total)

- **27% African-American**
- **15% Hispanic**
- **3% Asian**

**SKILLED**

- **40% minority**
- **5% women**

**LABORERS**

- **60% minority**
- **5% women**

**LOCAL**

- **50-60%**



# Workforce Development



- The goal of Rebuild’s workforce development programs is **to assist in increasing the diversity within the skilled trades** by providing training opportunities for minorities and women in Philadelphia.
- Rebuild offers paid training programs with a direct connection to potential long-term, full-time employment within the skilled trades and partner employer agencies.
- Training programs *do not guarantee employment* but do provide exposure to the skilled trades.

# Academy Requirements

- **Minimum age of 18**
- **Philadelphia residency**
- **High school diploma or equivalent**
- **Valid Photo ID (unexpired Driver's License preferred)**
- **Ability to pass a drug screening**
- **Willingness to undergo a background check (Justice impacted strongly encouraged to apply)**
- **Ability to engage in strenuous physical work**
- **Interested in a career in construction**





**Aiisha Herring-Miller**, *Deputy Director, Diverse Business & Workforce Development*

- [Aiisha.G.Herring@phila.gov](mailto:Aiisha.G.Herring@phila.gov)
- 267-271-5808

**Tiffany Smith**, *Director of Workforce Development*

- [Tiffany.Smith@phila.gov](mailto:Tiffany.Smith@phila.gov)
- 215-964-5162

**Shaun Guess**, *Manager of Workforce Development and Business Supports*

- [Shaun.Guess@phila.gov](mailto:Shaun.Guess@phila.gov)
- 267-240-2010



# BREAKOUT FOR Q&A

## NEXT STEPS:

- Make sure you signed in! Check your email next week for a copy of the presentation from this meeting
- Stay tuned for the next progress update later this Fall via email, as the final construction drawings are prepared for bidding

## • Thank You! Stay In Touch

- Rebuild

Amanda Colón-Smith, [Amanda.Colon-Smith@phila.gov](mailto:Amanda.Colon-Smith@phila.gov)

Community Engagement Director