

EZ SIGNS, LLC

1839 Bustleton Pike

Feasterville, PA 19053

P: 1 (866) 349-5444

F: (215) 676-3269

**EZ SIGNS LLC**  
**1 (866) FIX-LIGHT**

---

January 11, 2024

Re: Application to install Signage  
Starbucks / 1937 CALLOWHILL ST

Proposed to install:

Sign A - Install one (1) statically LED-lit accessory wall sign 9.75 SQ FT

Sign B - Install one (1) statically LED-lit accessory D/S blade sign 2.08 SQ FT

Thanks for your help!

---

Natalya Atroshyna

EZ SIGNS LLC

1839 Bustleton Pike

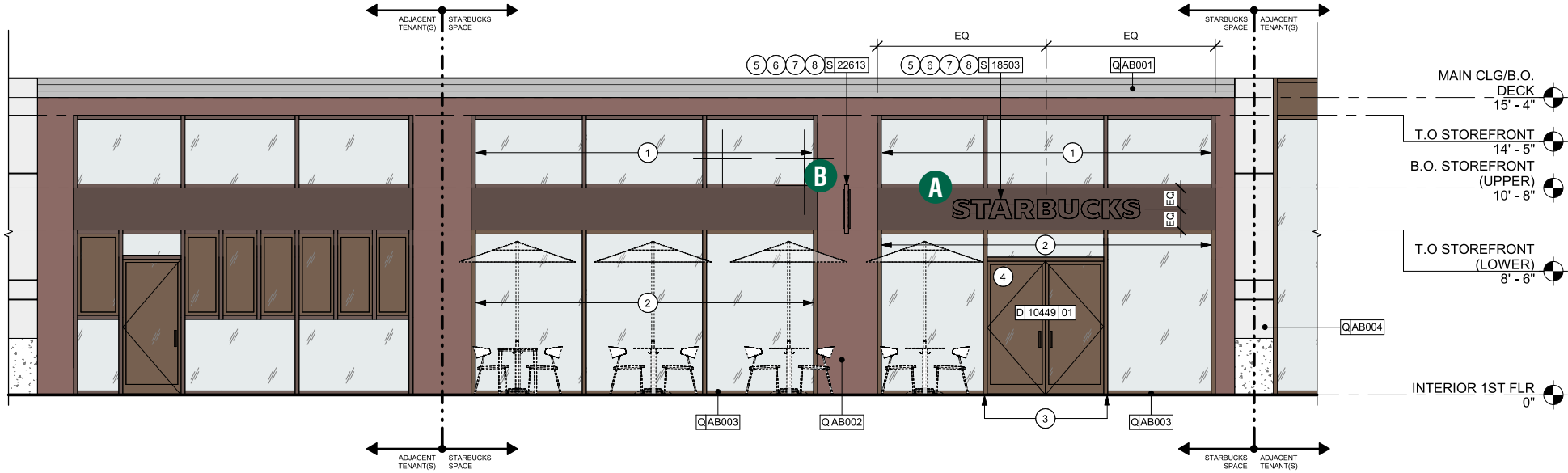
Feasterville, PA 19053

p. 267- 406 - 0273

e. [permits@signsinstall.com](mailto:permits@signsinstall.com)

SITE PLAN

- A 12" CHANNEL LETTERS
- B 10X30 WORDMARK BLADE SIGN



SOUTH ELEVATION

Scale: 1/8"=1'-0"

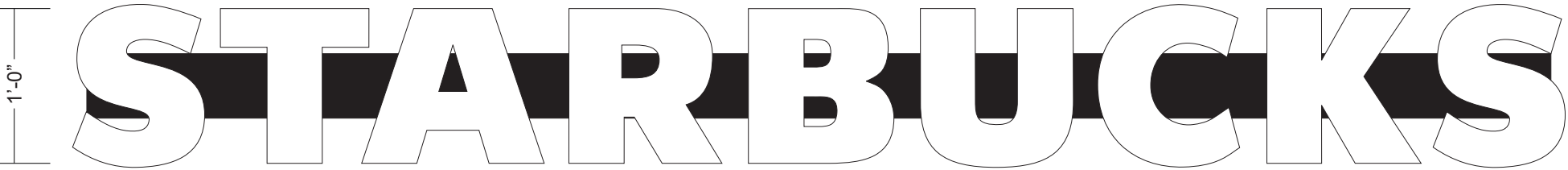
TRIMLESS CHANNEL LETTERS - RACEWAY

Qty. 1

Install one (1) statically LED-lit accessory wall sign

**A** SBC-S18503-RW-SB-12-W-SDS

9'-8"



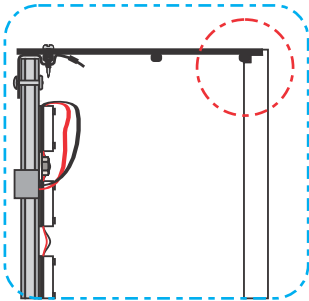
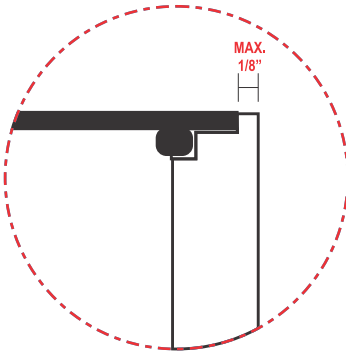
Front View

Scale: 1" = 1'-0" (11x17 Paper)

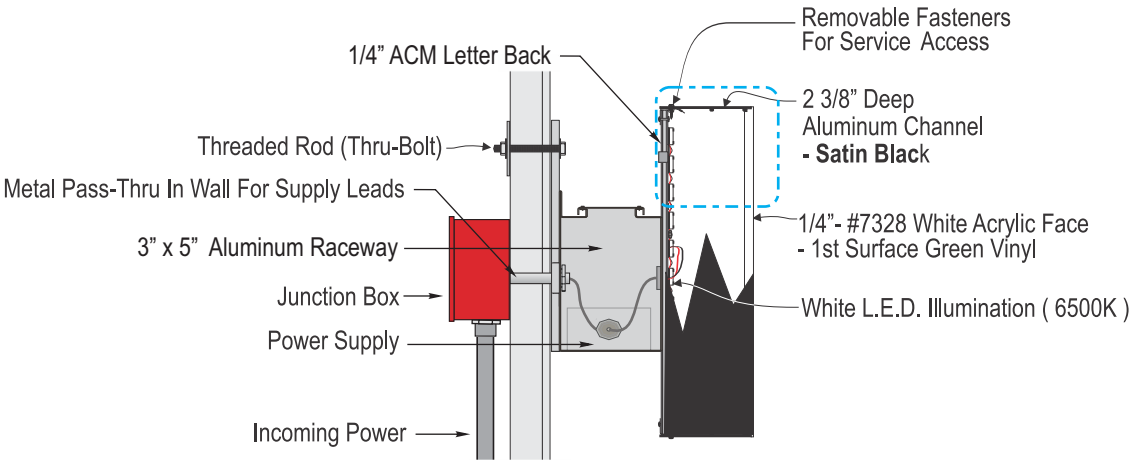
**Specifications:**

9.75 SQ FT

- A** Internally illuminated SDS LetterForm trimless channel letter with returns painted **satın black**.
- B** White faces to be 1/4" 7328 matte white acrylic
- C** Internally illuminated letters with 6500K Sloan white LED mounted to 1/4" ACM back
- D** 1/4" drain holes located at the bottom of each letter and in raceway as required by UL 48 for Electric Signs.
- E** Drain holes to be covered with drain hole covers to reduce light leaks.
- F** Raceway painted match fascia



N.T.S.



**Note:**  
Mounting method to be confirmed via tech survey

COLOR LEGEND		
	PMS/PAINT	VINYL
	PMS 3425 C	3M 3630-126
	SATIN BLACK	NA
	PMS WHITE	NA

## Qty. 1

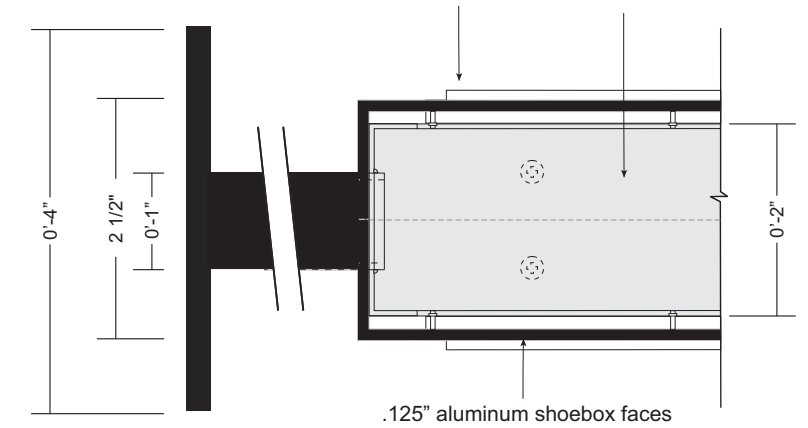
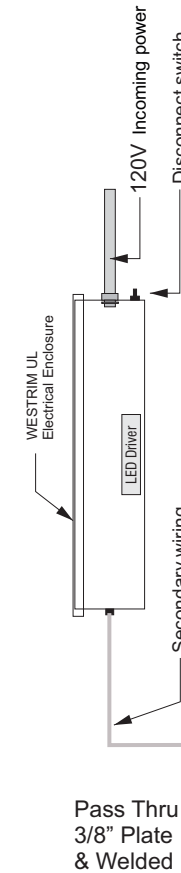
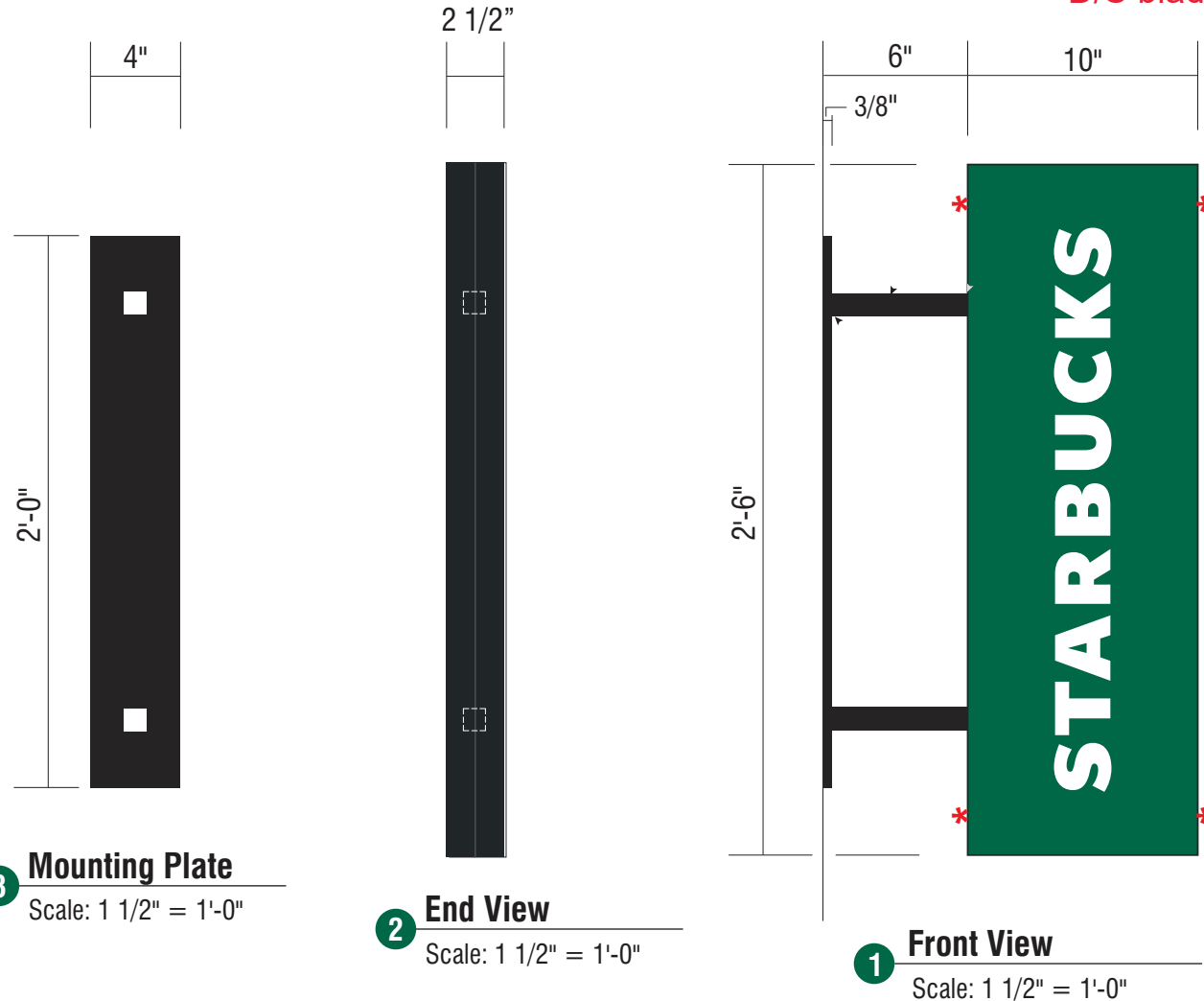
**SBC-S22613-WMBLD-3010-VERT**

Install one (1) statically LED-lit accessory

D/S blade sign 2.08 SQ FT

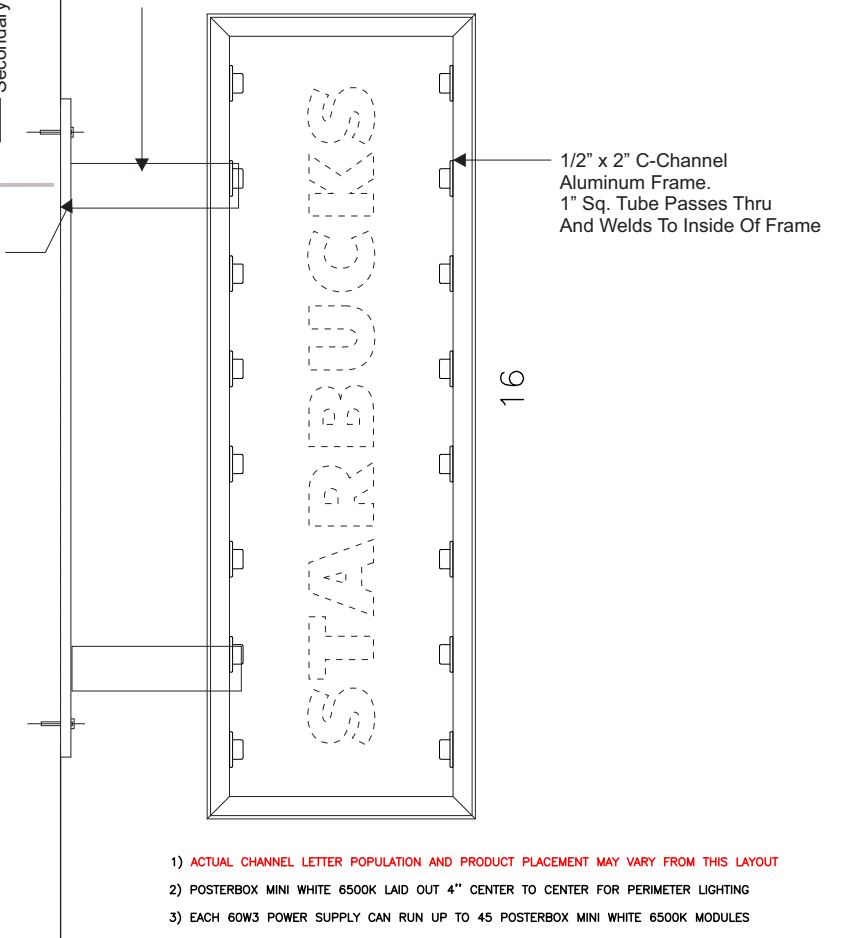
1/4" 7328 push-thru acrylic with 1/8" extending beyond the face. 7328 push-thru is glued to a 1/8" thick clear acrylic backer with 3M 3635-70 Diffuser Film on 2nd surface

1/2" x 2" c-channel  
aluminum frame



### 4 Enlarged Section View Detail

1:2



- 1) **ACTUAL CHANNEL LETTER POPULATION AND PRODUCT PLACEMENT MAY VARY FROM THIS LAYOUT**
- 2) POSTERBOX MINI WHITE 6500K LAID OUT 4" CENTER TO CENTER FOR PERIMETER LIGHTING
- 3) EACH 60W3 POWER SUPPLY CAN RUN UP TO 45 POSTERBOX MINI WHITE 6500K MODULES
- 4) LAYOUT BASED ON A 3.0625" CAN DEPTH
- 5) ALL OUTSIDE INSTALLATIONS MUST HAVE PROTECTIVE LENS TO KEEP FOREIGN MATERIALS OUT
- 6) DIMENSIONS ARE IN INCHES UNLESS STATED OTHERWISE
- 7) 701946-6WMLP1 WATTS PER MODULE: 1.2
- 8) PRIMARY SYSTEM POWER: 24.00 WATTS
- 9) LED MODULE POWER USAGE (secondary): 19.20 WATTS

ESTIMATED PRODUCT B.O.M. PER SIGN:




16 Each PosterBOX Mini White 6500K Modules - 10'  
PN: 701946-6WMLP1

1 Each 60C2 (Damp/Dry locations) or 60W3 (Wet location) 60W Power Supply 12VDC

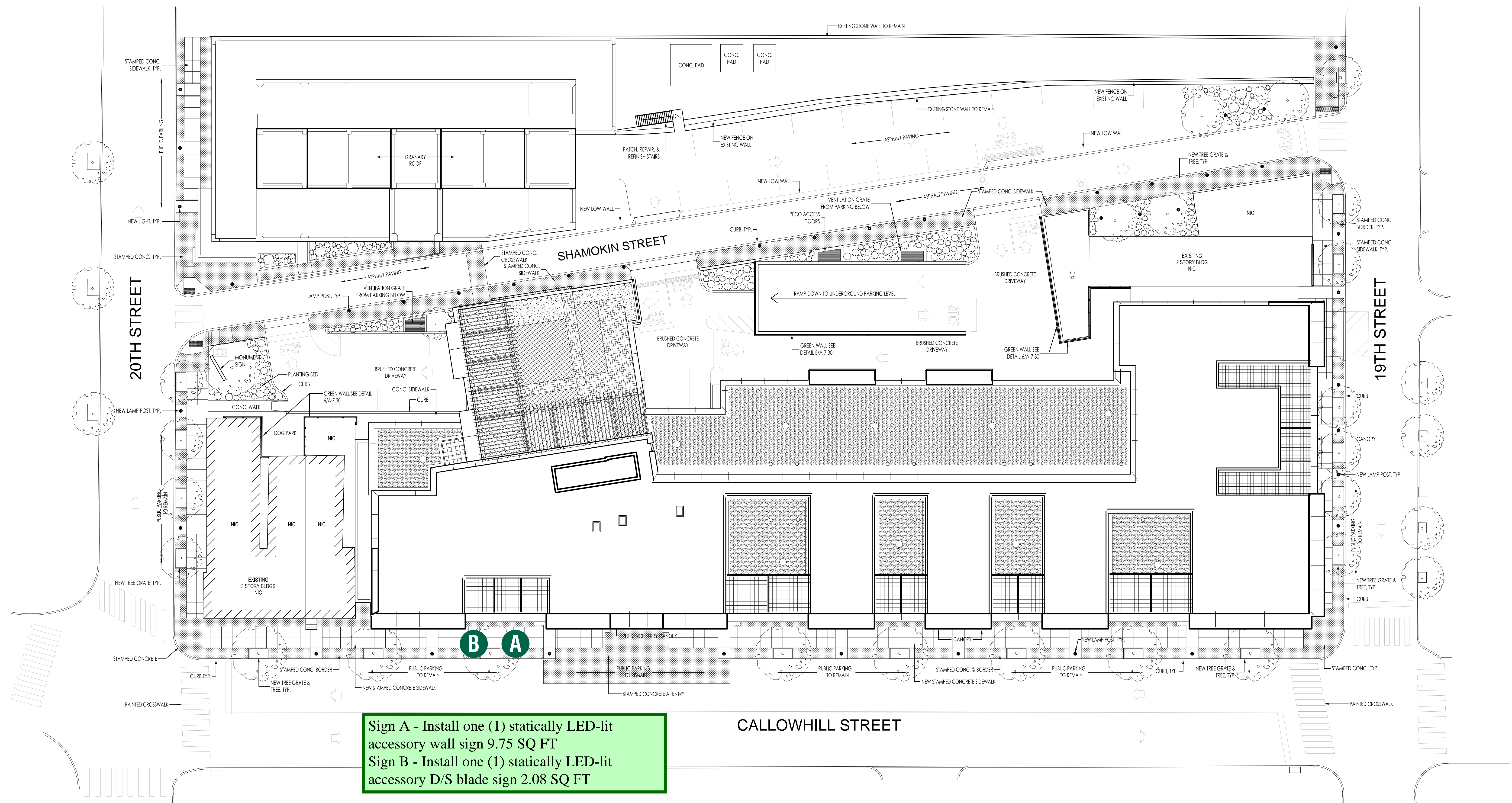
1 Each 100' Roll of Jacketed Cable

### Specifications:

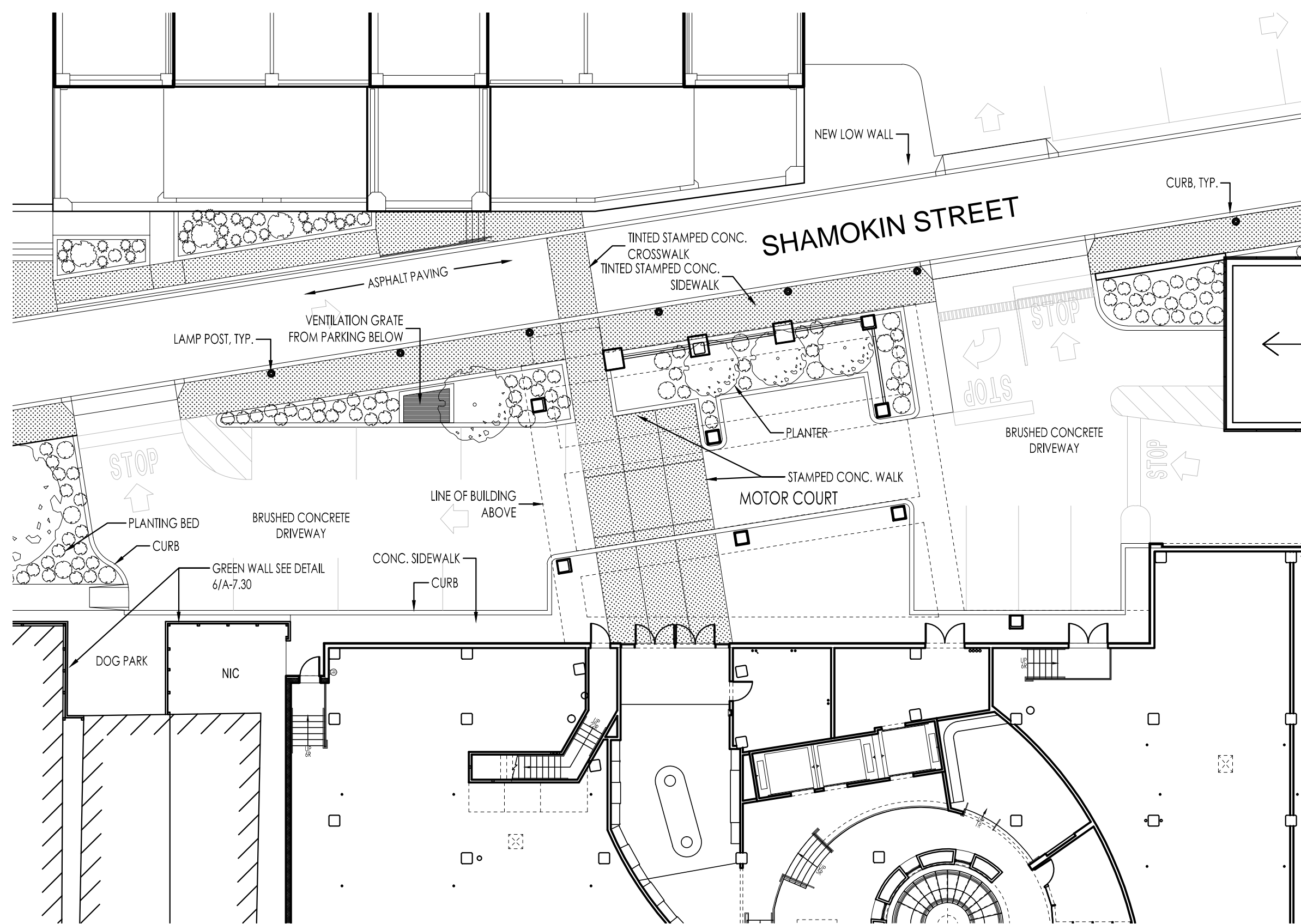
- A** Double faced internally illuminated wordmark cabinet.
- B** Cabinet body to be 1/2" x 2" aluminum c-channel frame
- C** .125" aluminum shoebox faces with 1/4" 7328 matte white acrylic laser cut push-thru copy. Shoebox faces to attach to 1/2" x 2" aluminum c-channel frame. Returns painted satin black and face painted PMS 3425 C
- D** Sign cabinet to be internally illuminated around perimeter with Sloan PosterBox Mini 6500k white LEDs. Secondary wiring to run through support to remote power supply.
- E** Mounting plate to be properly secured to structural members when used in an exterior application.
- F** #4 countersunk screws attach faces to the cabinet structure and are painted satin black to match the return
- G** 1/4" drain holes located at the bottom of cabinet as required by UL 48 for Electric Signs.
- H** Drain holes to be covered with drain hole covers to reduce light leaks.

COLOR LEGEND		
	PMS/PAINT	VINYL
	PMS 3425 C	3M 3630-126
	SATIN BLACK	NA
	PMS WHITE	NA





1 SITE PLAN  
SCALE: 1/16" = 1'-0"



2 PARTIAL SITE PLAN @ MOTOR COURT  
SCALE: 1/16" = 1'-0"

NOTES:

1. SITE PLAN FOR DESIGN INTENT ONLY. REFER TO CIVIL DWGS FOR SITE DETAILS.
2. ALL STAMPED CONC TO BE TINTED. COLOR(S) TBD

# THE GRANARY

1901 CALLOWHILL STREET  
PHILADELPHIA, PA 19130

**DAS**

ARCHITECTURE  
INTERIORS  
FURNISHINGS

DAS ARCHITECTS, INC.  
8 PENN CENTER, SUITE 100  
PHILADELPHIA, PA 19103  
TEL: 215 . 751 . 9008  
FAX: 215 . 751 . 9118  
dasarchitects.com

© 2012 DAS ARCHITECTS, INC.  
ALL RIGHTS RESERVED

DRAWING TITLE

ARCHITECTURAL  
SITE PLAN

REVISIONS

PROJECT NUMBER

2710

DATE

9/21/12 CONSTRUCT DOCS

DRAWN BY

SCALE

1/16" = 1'-0"

DRAWING NUMBER

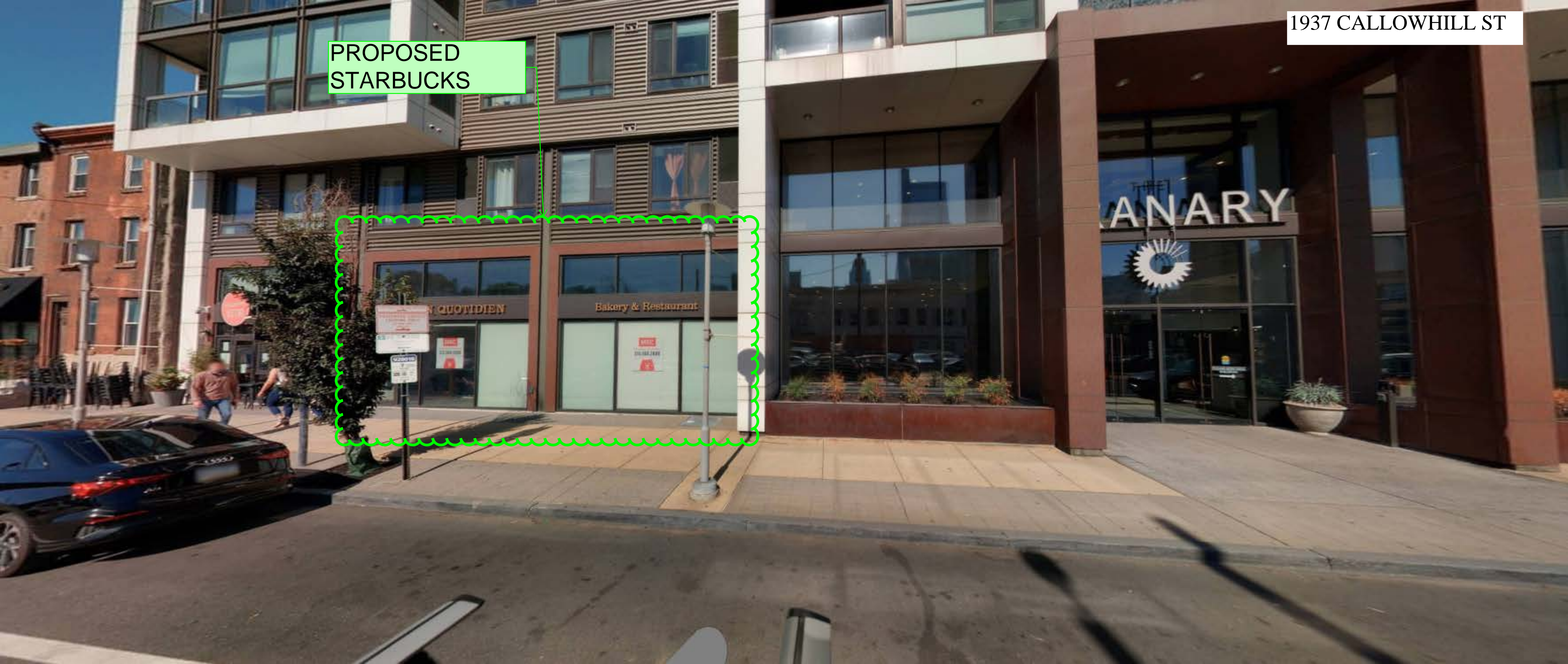
A-0.10

CONTRACTOR SHALL VERIFY AND BE RESPONSIBLE FOR ALL DIMENSIONS AND CONDITIONS AND SHALL NOTIFY THE ARCHITECT OF ANY DISCREPANCIES BEFORE PROCEEDING WITH THIS PROJECT.



1937 CALLOWHILL ST

PROPOSED  
STARBUCKS





1937 CALLOWHILL ST





1937 CALLOWHILL ST





1937 CALLOWHILL ST





1937 CALLOWHILL ST





