



SIGN INVENTORY

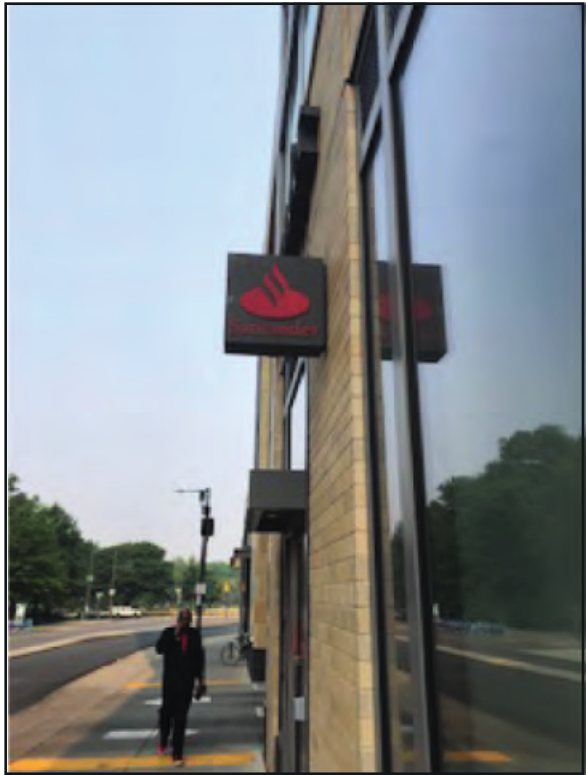
|       |                        |
|-------|------------------------|
| SITE: | SAN2303 - Rodin Square |
| SIGN  | PROPOSED SIGN          |
| E01   | REFACE                 |
| E02   | RICL-24-2018           |
| E03   | CUSTOM SIGN            |

\*\*TENANT SPACE\*\*

20.3' w x 16'6" H



Existing:  
23 13/16" h x 23  
13/16" w  
  
Illum



EXISTING



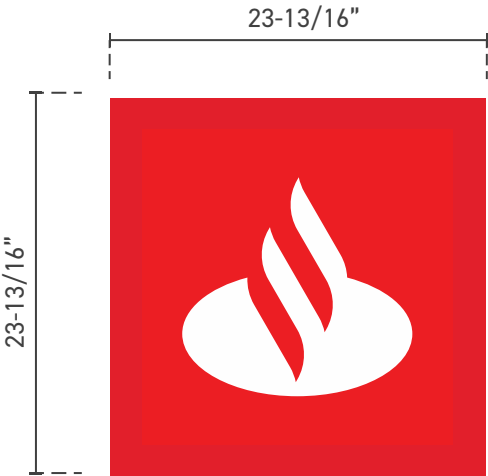
PROPOSED  
Signs Rendered Proportional to Photo

**RECOMMENDATION**

**E01 REFACE**  
Reface Existing Flag Mounted Sign with New Routed Aluminum Face - 23-13/16"h x 23-13/16"w

Illum.

Note:  
Paint retainer and can to match PMS 485C.



E01 - Reface Flag Sign  
Scale: 1" = 1' 0"

Existing:  
 30" Logo, 24"  
 Letters  
 2'9-3/4" h x  
 16'0-5/8" w  
  
 Illum

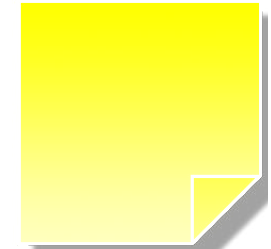


EXISTING



PROPOSED

Signs Rendered Proportional to Photo



## RECOMMENDATION

### E02 RICL-24-2018

24" Red Illuminated Channel  
 Letters w/ OSTD Black Returns  
 -2' 9-3/4"h x 16' 0-5/8"w



E02 - RICL-24-2018

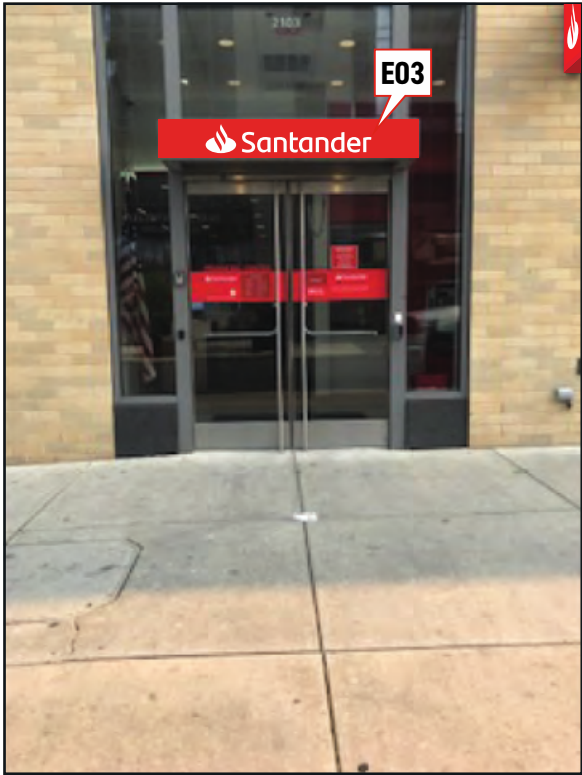
Scale: 3/8" = 1' 0"

Existing:  
12" h x 82" w  
(Canopy)  
9" h x 51-3/8" l (logo/  
letters) Attached  
using double sided  
tape  
  
Non-Illum

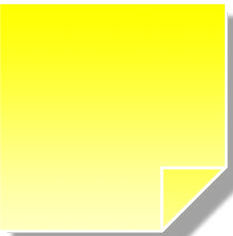


EXISTING

Height of sign is 12"



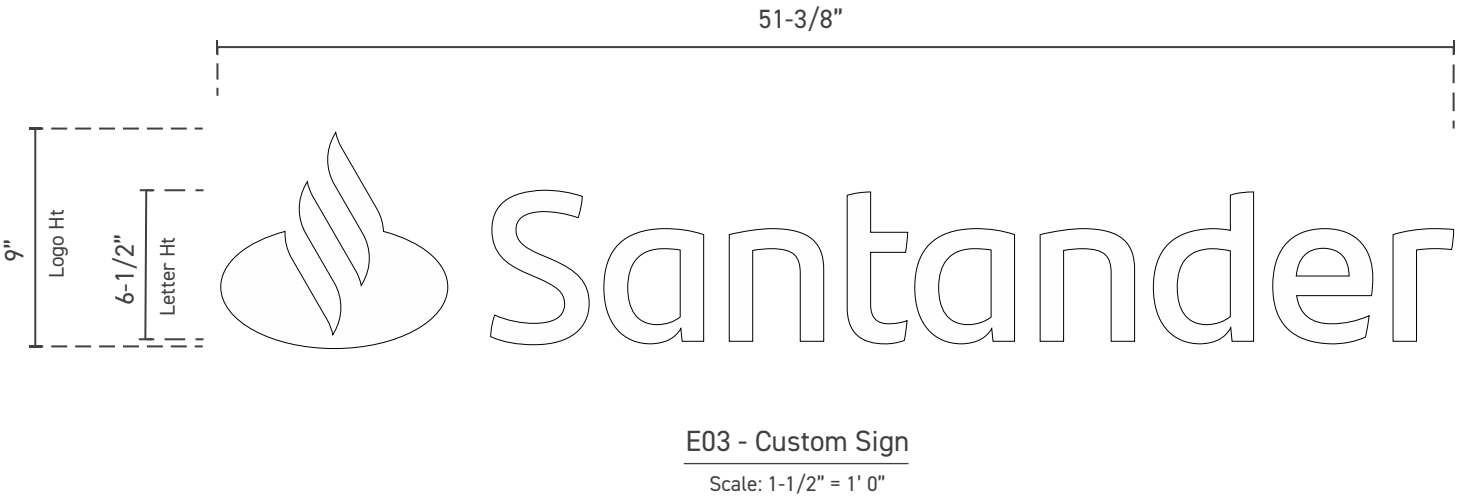
PROPOSED  
Signs Rendered Proportional to Photo



**RECOMMENDATION**

**E03 CUSTOM SIGN**  
White Non-Illuminated  
Aluminum Plate Letters  
-9"oah x 51-3/8"oal

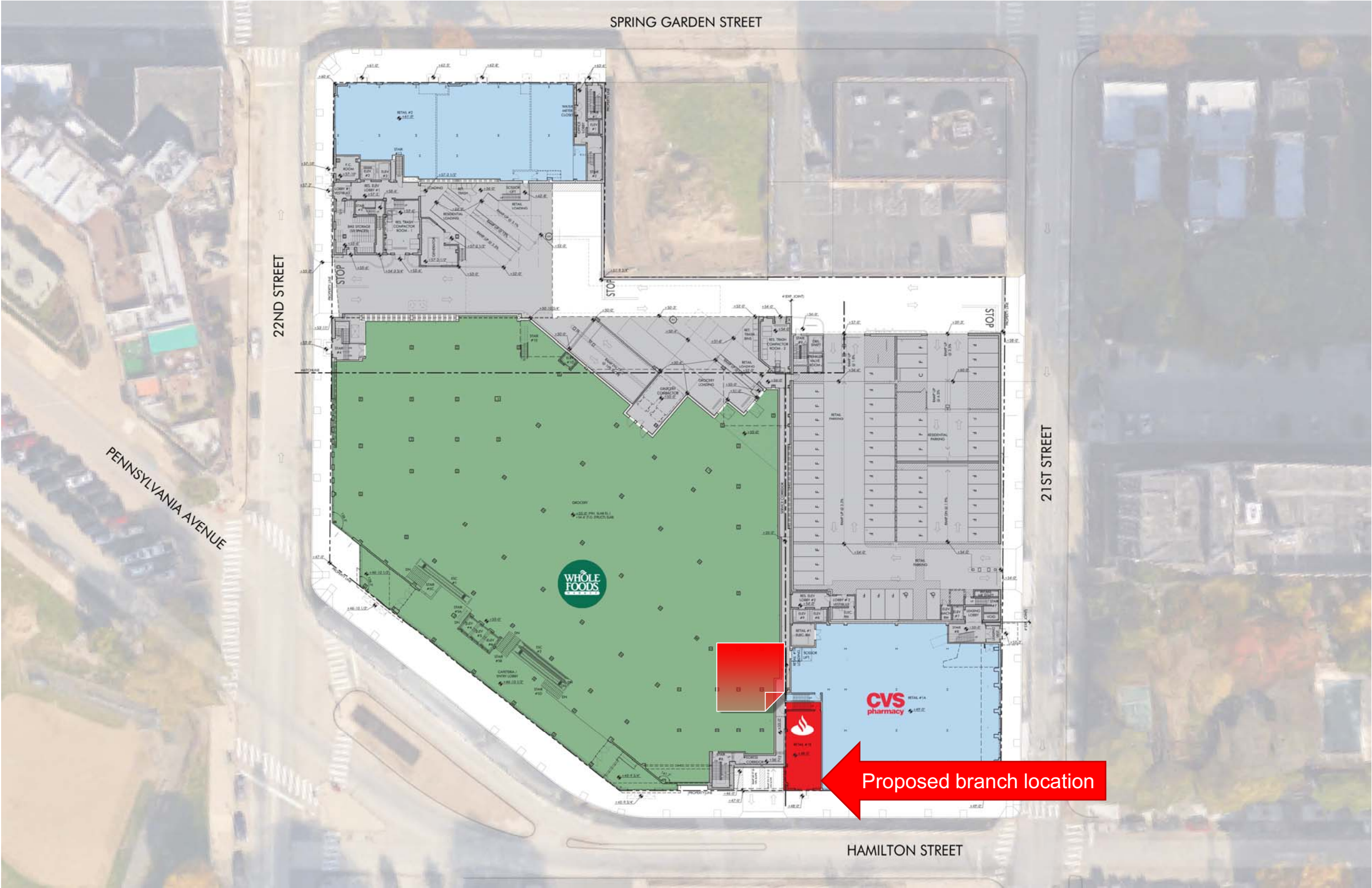
Note:  
Paint canopy PMS 485.



# Rodin Square | Site Analysis

## Proposed Branch Location | 501 N 22<sup>nd</sup> Street (Ground Floor)

**PRELIMINARY**  
Not for fabrication/construction

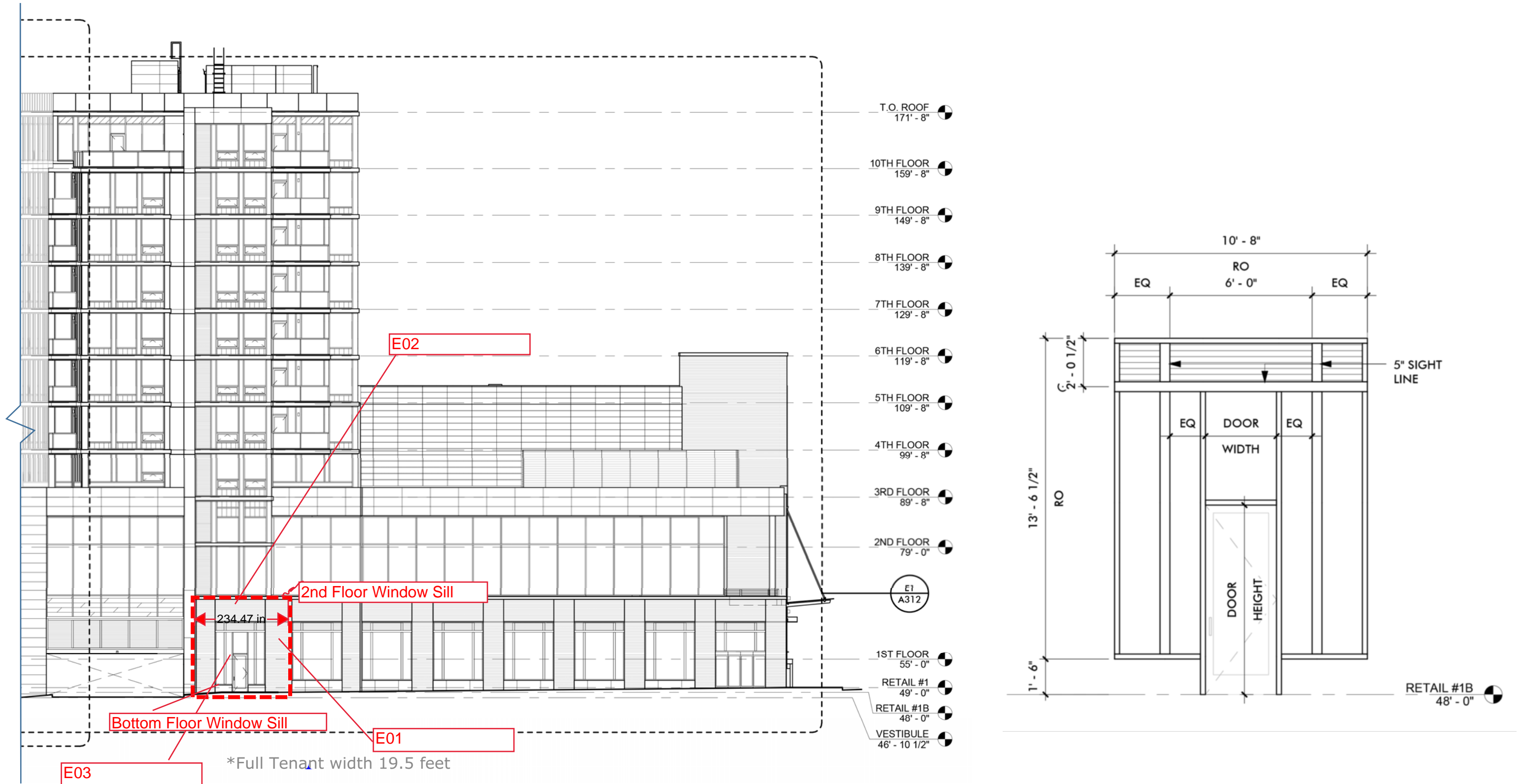


# Rodin Square | Site Analysis

## Proposed Branch Elevation

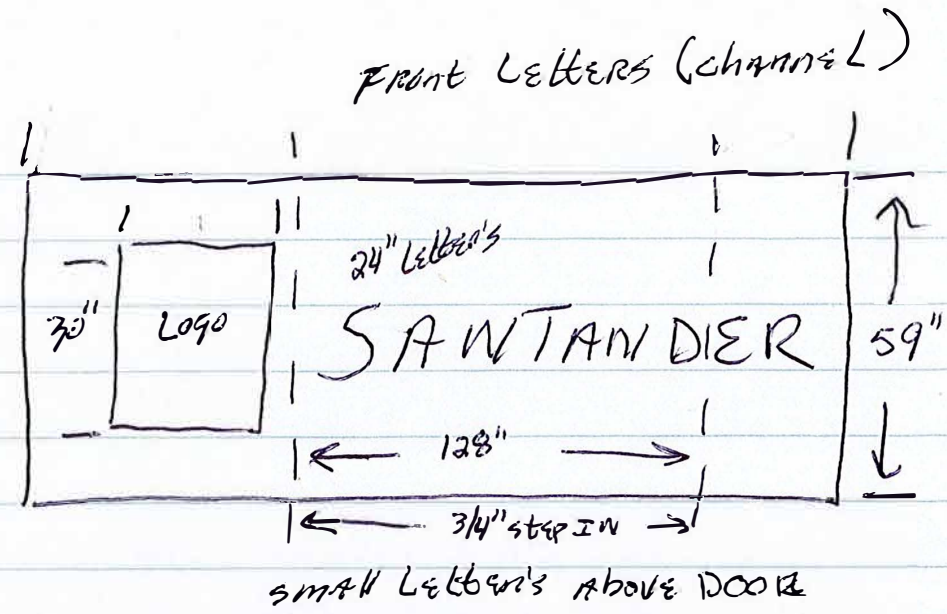
# PRELIMINARY

Not for fabrication/construction

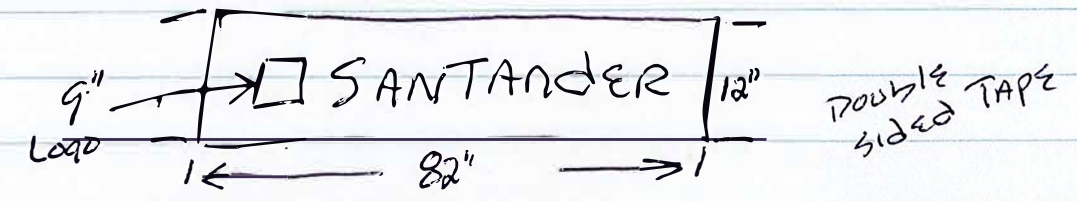


Existing Sign Sizes

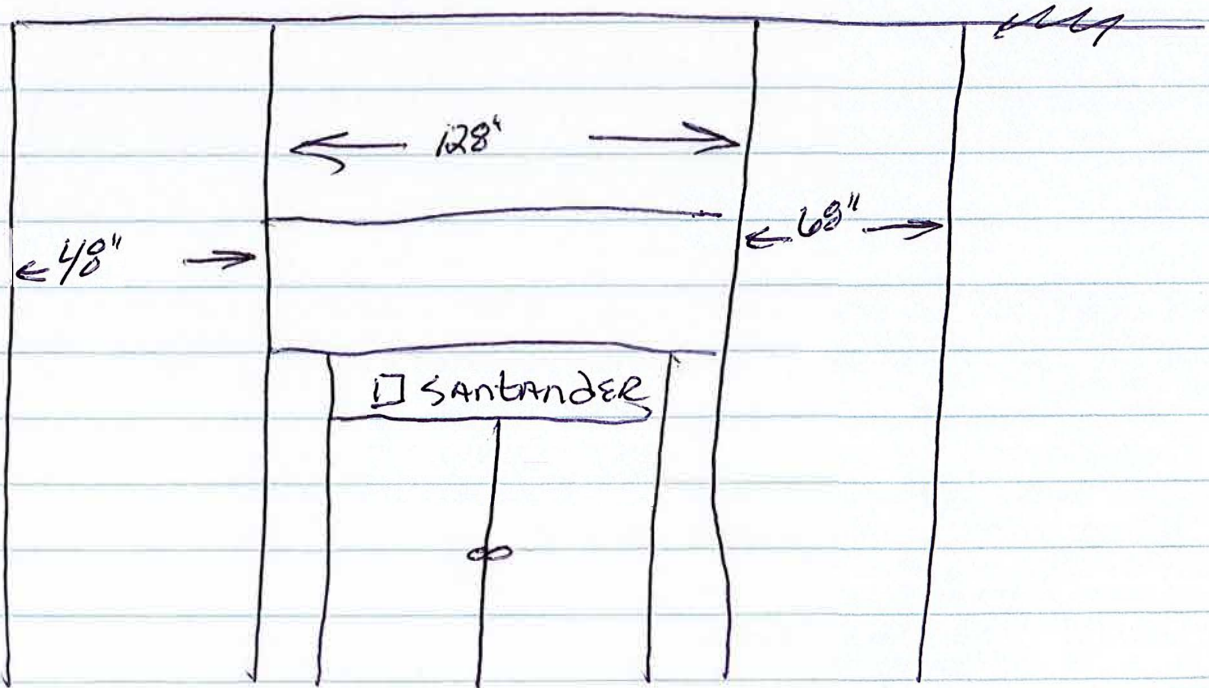
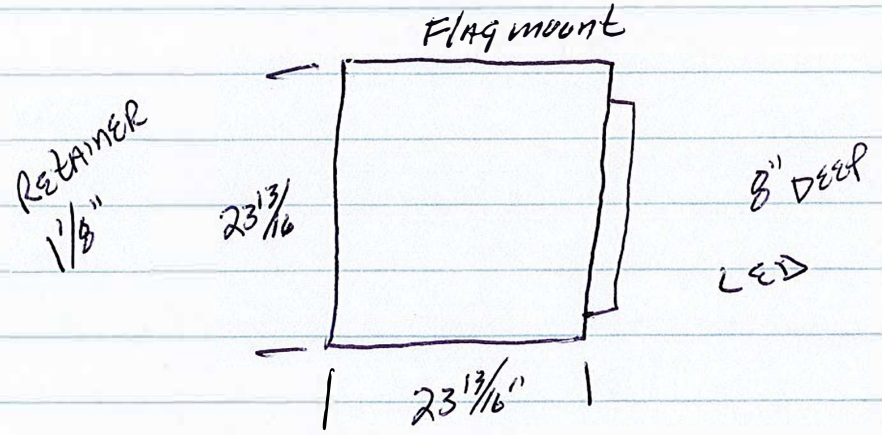
E02



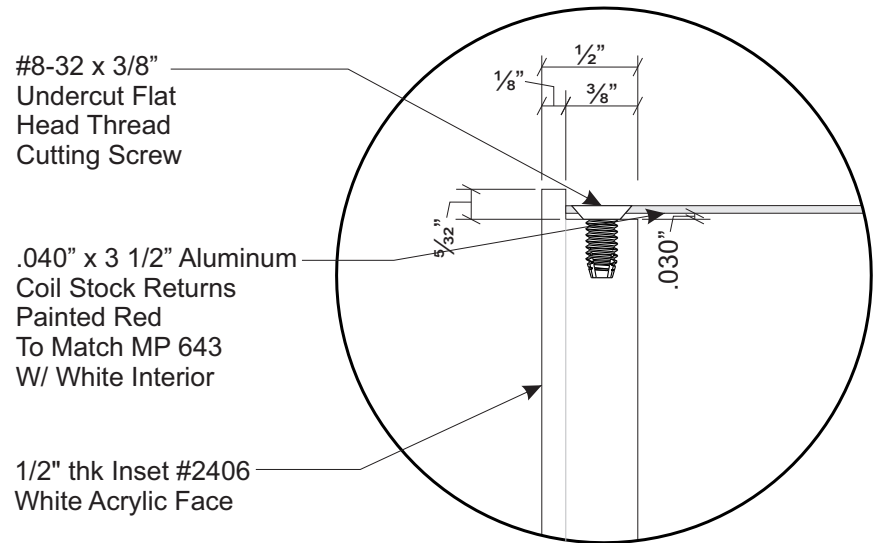
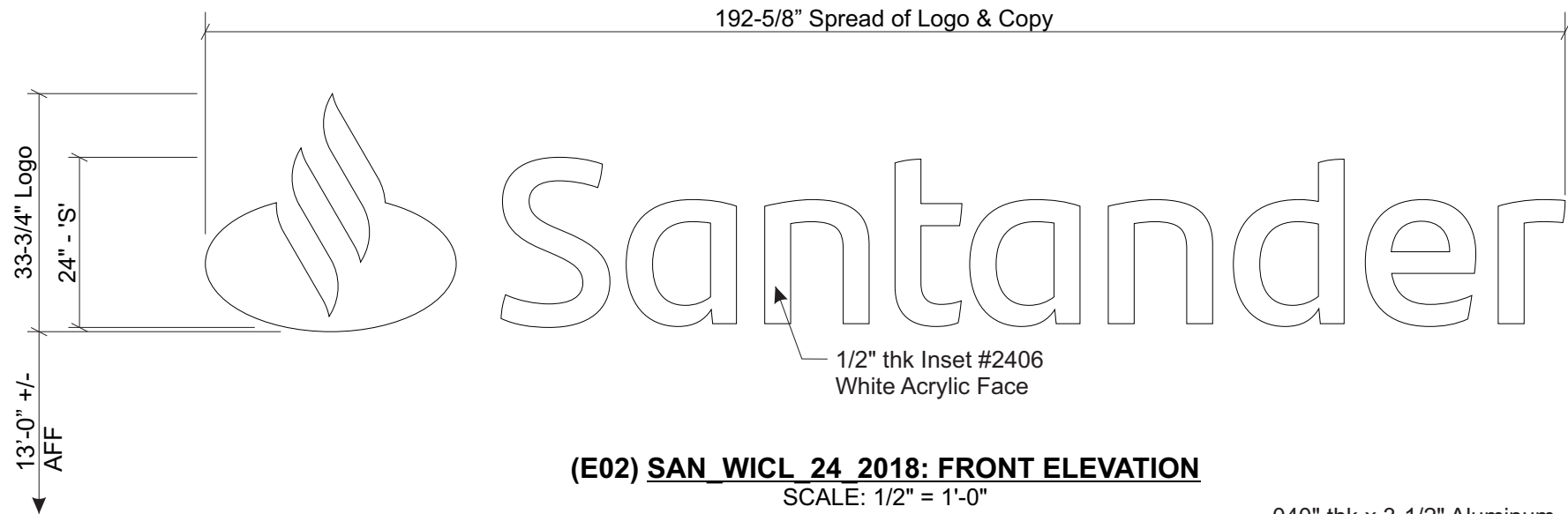
E03



E01



Tenant space = 20.3' w x 16' 6" h

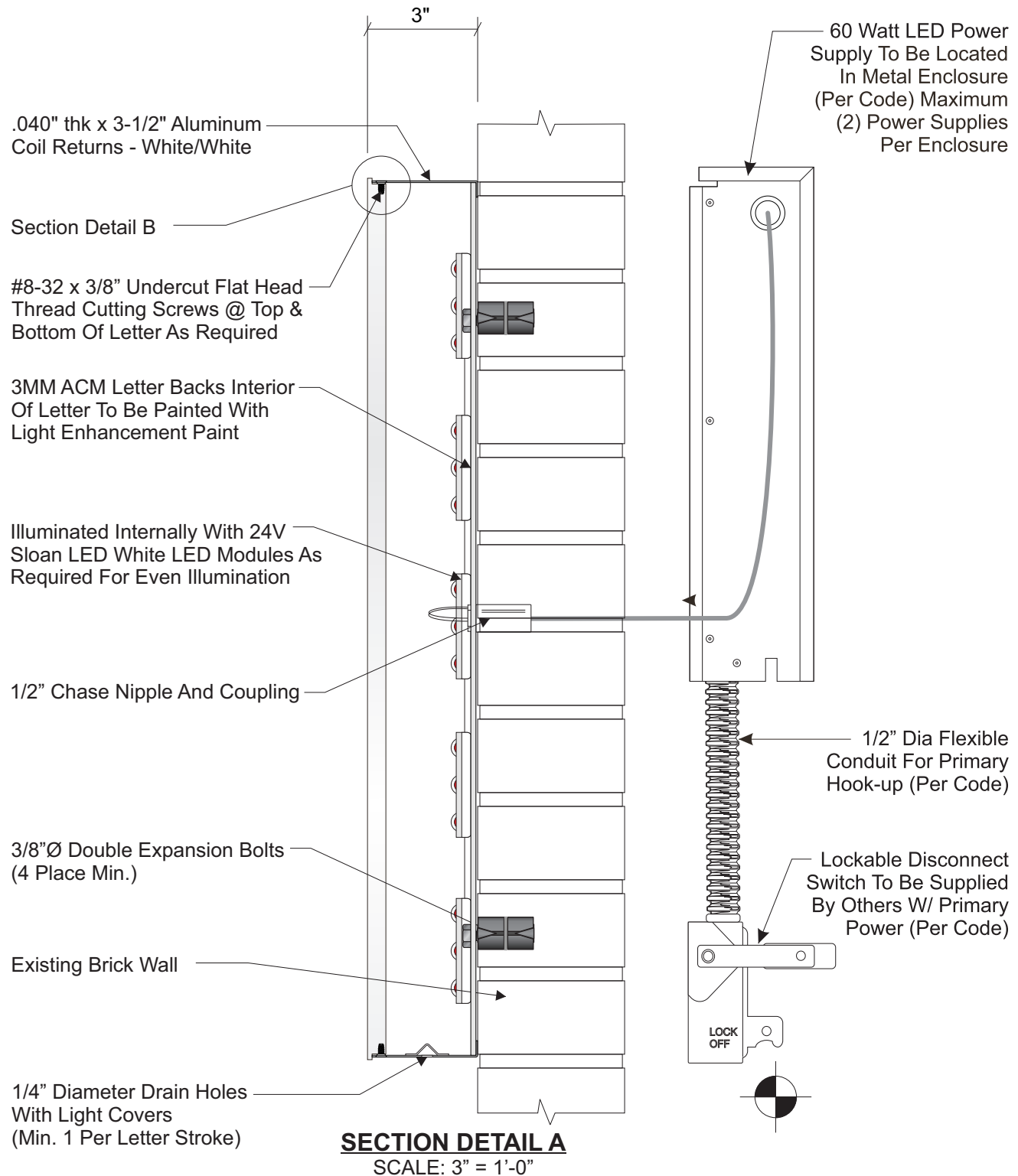


**SECTION DETAIL B**  
FULL SCALE

**ELECTRICAL LOAD**  
(1.2) Amps @ 120 Volts  
**ELECTRICAL REQ'MTS**  
(1) 20 Amp/120 Volt Circuits

- STANDARD LETTER NOTES:**
1. Sufficient Primary Circuit In Vicinity Of Sign By Others.
  2. Letter To Letter Wiring & Final Primary Hook-up By Sign Installer, Where Allowed By Local Codes.
  3. Sign Shall Be U.L. Listed.
  4. Mounting Hardware By Sign Installer.
  5. Full Size Drilling Template Furnished With Sign.

Note: This sign is intended to be installed in accordance with the requirements of Article 600 of the NFPA 2017 National Electrical Code and/or other applicable local codes. This includes proper grounding and bonding of the sign.



**PERMITS  
ONLY**



**PHILADELPHIASIGN**  
BRINGING THE WORLD'S BRANDS TO LIFE

707 West Spring Garden Street  
Palmyra, New Jersey 08065  
Phone: 856.829.1460  
Fax: 856.829.8549  
www.philadelphiasign.com

**CUSTOMER:**  
**SANTANDER**

**JOB NUMBER:**  
**SAN2303**

**SIGN TYPE:**  
**VARIOUS**

**LOCATION:**  
**2103 HAMILTON STREET  
PHILADELPHIA, PA 19130**

**DATE:**  
**12/7/23**

**DRAWN BY:**  
**RRR**

**REVISION:**  
Number:      Date:      By:

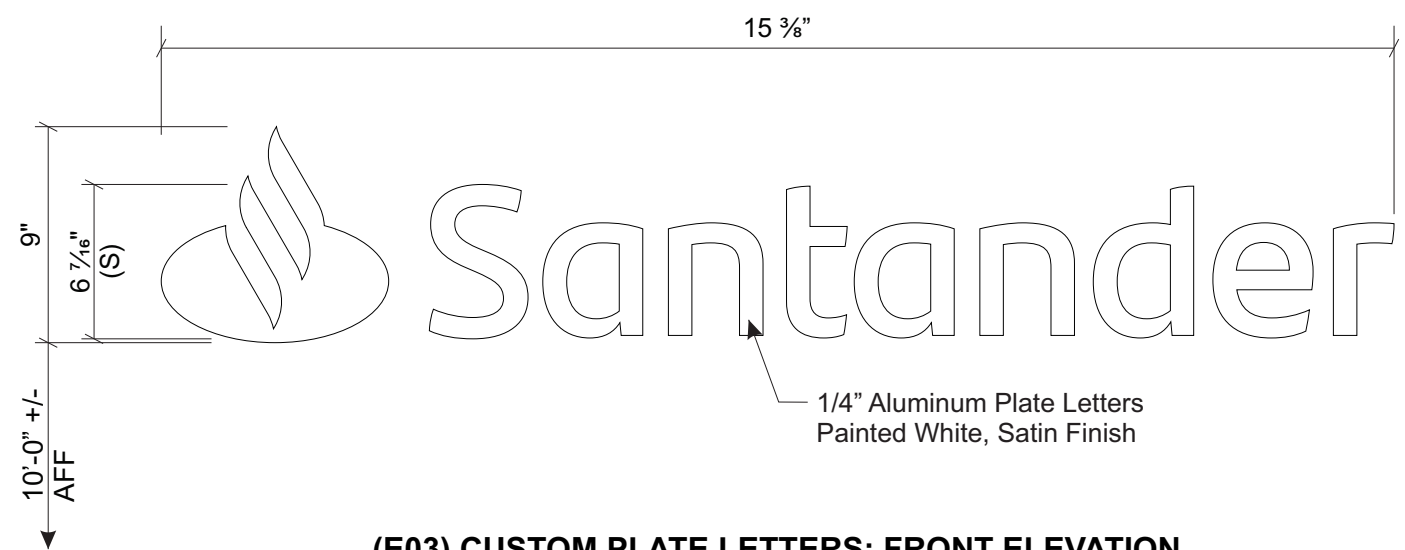
**SHEET:** **1 OF 2** **ENG DEPT**

**DWG NUMBER:**  
**B-107277**

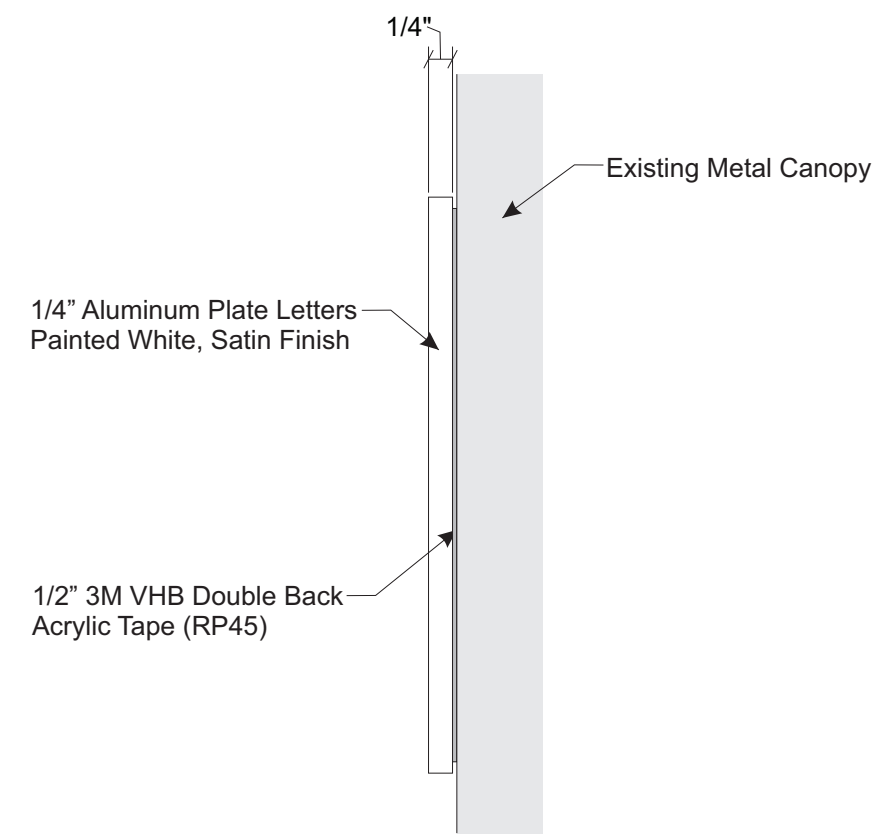
**ENGINEER SEAL:**

**ULTIMATE WIND SPEED 115 MPH  
EXPOSURE C**

THIS IS AN ORIGINAL UNPUBLISHED DRAWING  
CREATED BY PSCO. IT IS SUBMITTED FOR YOUR  
PERSONAL USE IN CONJUNCTION WITH A PROJECT  
BEING PLANNED FOR YOU BY PSCO. IT IS NOT TO  
BE SHOWN TO ANYONE OUTSIDE YOUR  
ORGANIZATION NOR IS IT TO BE USED, COPIED,  
REPRODUCED, OR EXHIBITED IN ANY FASHION.



**(E03) CUSTOM PLATE LETTERS: FRONT ELEVATION**  
SCALE: 1 1/2" = 1'-0"



**SECTION DETAIL**  
HALF SCALE

PERMITS  
ONLY



PHILADELPHIASIGN  
BRINGING THE WORLD'S BRANDS TO LIFE

707 West Spring Garden Street  
Palmyra, New Jersey 08065

Phone: 856.829.1460  
Fax: 856.829.8549  
www.philadelphiasign.com

CUSTOMER:  
**SANTANDER**

JOB NUMBER:  
**SAN2303**

SIGN TYPE:  
**VARIOUS**

LOCATION:  
**2103 HAMILTON STREET  
PHILADELPHIA, PA 19130**

DATE:  
**12/7/23**

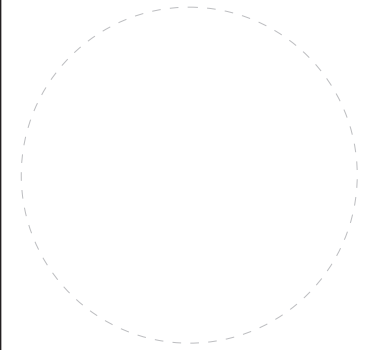
DRAWN BY:  
**RRR**

REVISION:  
Number:      Date:      By:

SHEET: ENG DEPT  
**2 OF 2**

DWG NUMBER:  
**B-107277**

ENGINEER SEAL:



ULTIMATE WIND SPEED 115 MPH  
EXPOSURE C

THIS IS AN ORIGINAL UNPUBLISHED DRAWING  
CREATED BY PSCO. IT IS SUBMITTED FOR YOUR  
PERSONAL USE IN CONJUNCTION WITH A PROJECT  
BEING PLANNED FOR YOU BY PSCO. IT IS NOT TO  
BE SHOWN TO ANYONE OUTSIDE YOUR  
ORGANIZATION NOR IS IT TO BE USED, COPIED,  
REPRODUCED, OR EXHIBITED IN ANY FASHION.