

# Memorandum



**To:** Alex Smith, Director Art Commission  
**From:** Priyanka Malik, Capital Project Manager, PPR  
**Date:** December 22<sup>nd</sup> 2023  
**Re:** Request for Administrative Approval and/or Art Commission Review

---

We respectfully request administrative approval for Site improvements at Towey playground  
1832 N Howard St, Philadelphia, PA 19122

The brief description of the project as stated below, and the enclosed drawings show the intended extent of work.

The project includes installing a new safety surface, new pieces of play equipment, and necessary site amenities as requested by Council. The project budget is \$451,421.26.

Thank you for your attention. Please inform me, if you need more information.

cc: Aparna Palantino, Deputy Commissioner, PPR  
Francesco Cerrai, Project Director  
Priyanka Malik, Project Manager, priyanka.malik@phila.gov or (215) 683-4472  
File: Project # 16-22-7099-01, Section 2.12



A photograph of Towey Playground with a colorful mural on the building and playground equipment in the foreground. The image has a semi-transparent pink overlay.

# TOWEY PLAYGROUND IMPROVEMENTS





**Towey Playground** Improvements







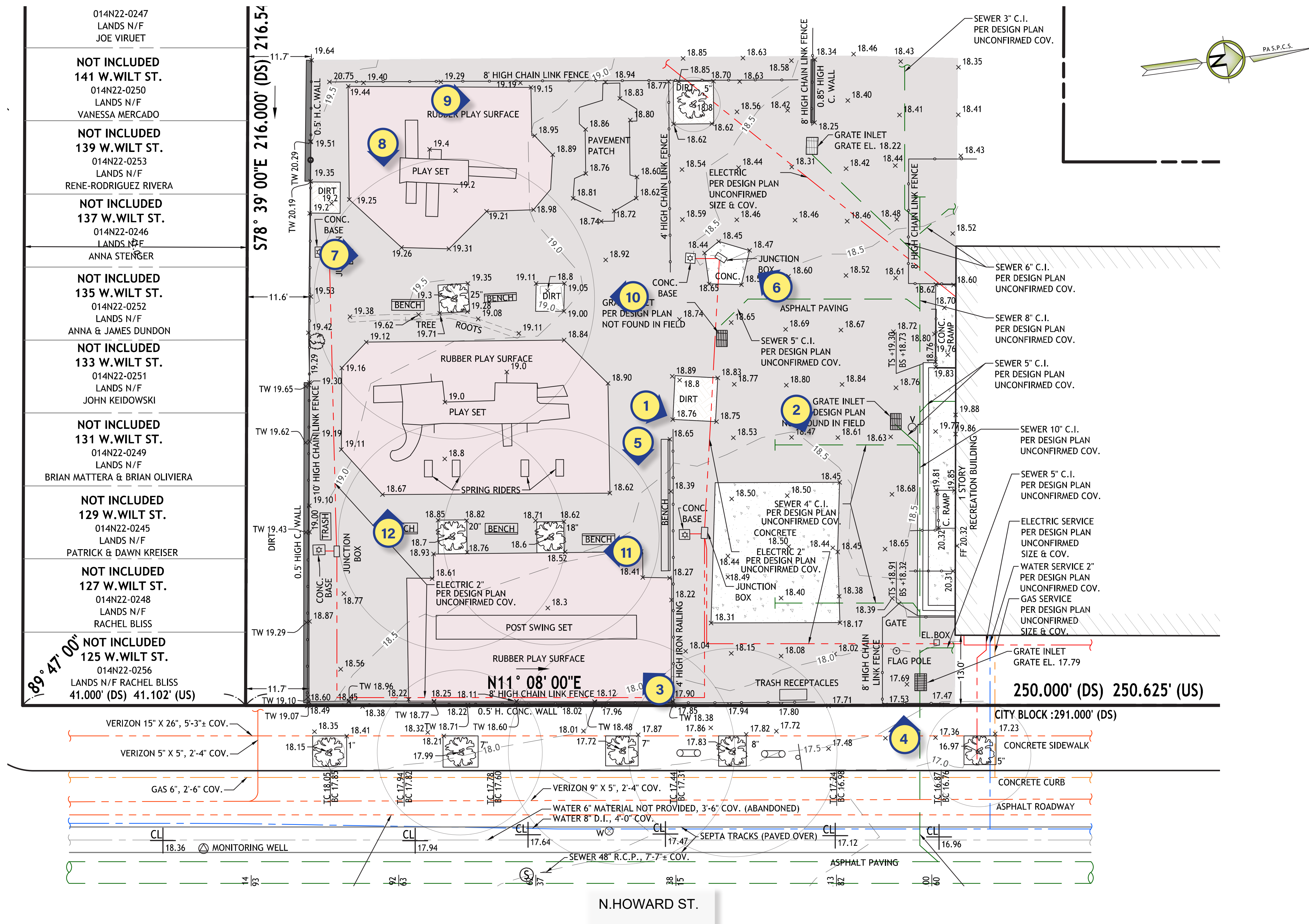






Image 1



Image 2



Image 3



Image 4



Image 5



Image 6





Image 7



Image 8



Image 9



Image 10



Image 11

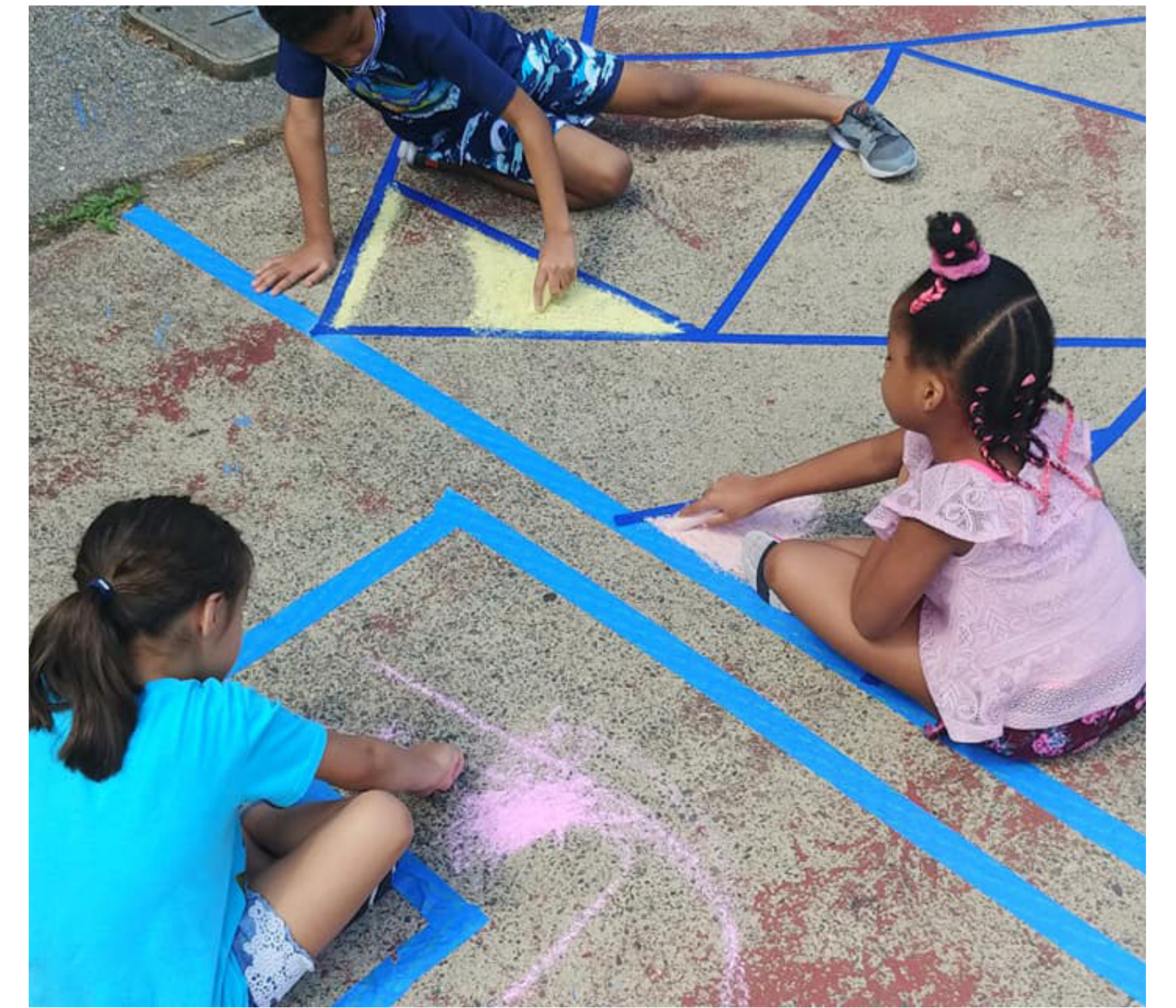


Image 12



## Community Meetings:

- Two community meetings were held
- Request to add game tables, surface painted games, bollards to deter vehicular movement into the play area, remove min one tree, have a 3 bay swings, noted excess unused seating

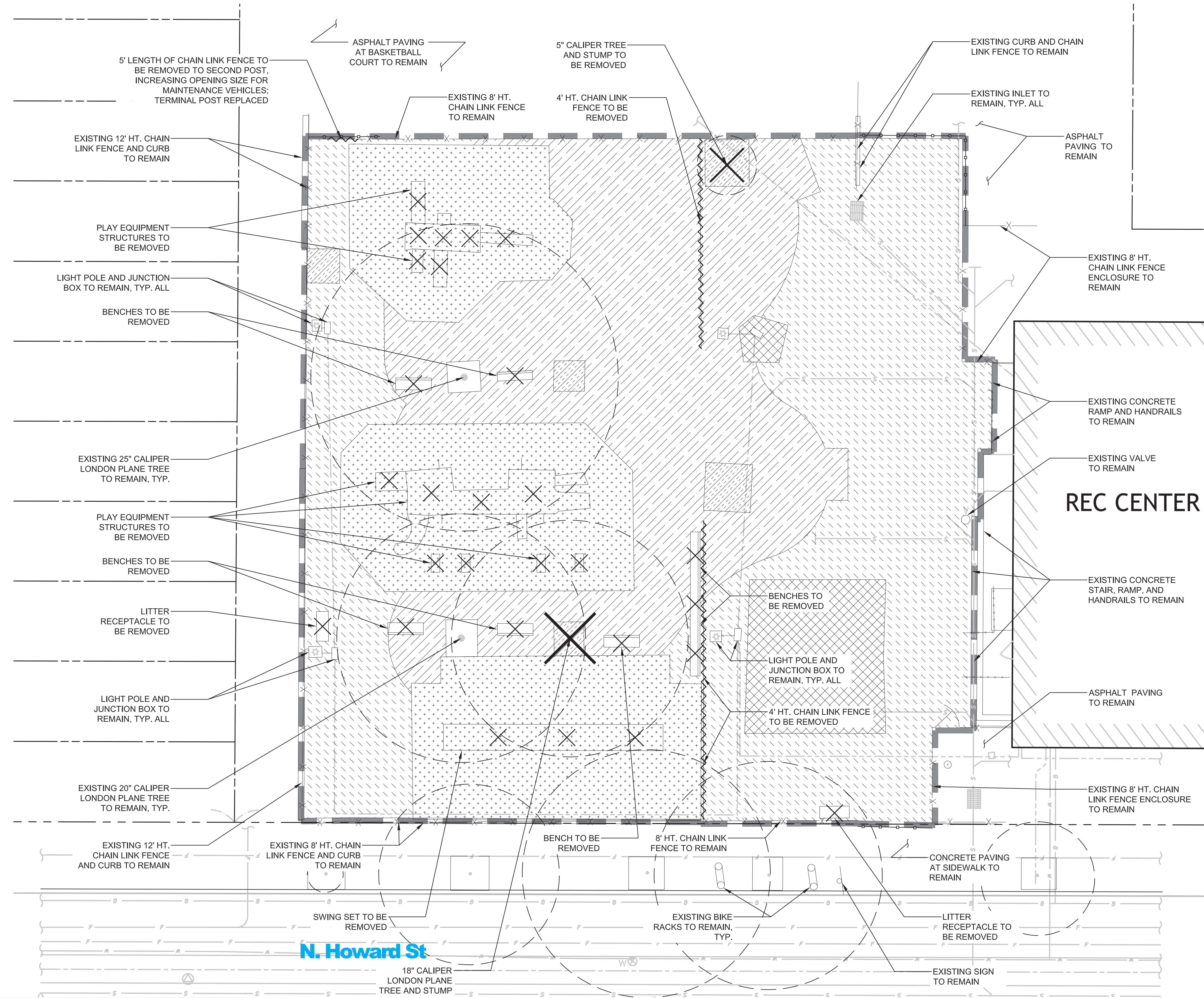


## DESIGN INTENT:

- Preserve and support existing mature trees
- Maximize accessible, inclusive, and sensory-friendly play features
- Support multi-generational, flexible community use







**KEY - REMOVALS**

- EXISTING ASPHALT PAVING TO BE REMOVED
- EXISTING ASPHALT TO MILL AND OVERLAY; WEARING COURSE TO BE REMOVED, BASE COURSE TO REMAIN
- EXISTING CONCRETE PAVING TO BE REMOVED
- EXISTING SOIL TO BE REMOVED
- EXISTING SAFETY SURFACING TO BE REMOVED
- EXISTING CHAIN LINK FENCE TO BE REMOVED
- EXISTING FEATURE TO BE REMOVED
- CONSTRUCTION FENCING
- LIMIT OF WORK

**KEY - EXISTING CONDITIONS**

- VALVE
- LIGHT POLE WITH FOUNDATION
- JUNCTION BOX
- ELECTRIC BOX
- SEWER MANHOLE
- WATER VALVE
- MONITORING WELL
- FLAG POLE
- GRATE INLET
- BIKE RACK
- SIGN
- RIGHT OF WAY
- PROPERTY LINE
- SEWER LINE
- WATER LINE



Tree Calculation:

- Under the 14-705-1(h) for Preserving Existing tree code, the project is preserving a 20" DBH and a 25" DBH tree. A 24" credit is thus earned. This should cover the 18" DBH tree removal and 5" DBH tree removal.

EXISTING SAFETY SURFACE TO BE REMOVED TYP.

EXISTING TREE TO REMAIN

EXISTING LIGHT POLE TYP.

EXISTING 4' CHAIN LINK FENCE TO BE REMOVED

JUNCTION BOX

EXISTING ASPHALT NEEDS TO BE MILL & OVERLAID

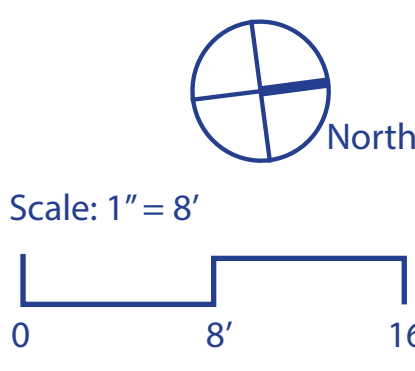
DIRT (TYP.)

EXISTING BENCHES TO BE REMOVED

EXISTING CONCRETE PATCH TYP. TO BE REMOVED

EXISTING TREE TO BE REMOVED

EXISTING FENCE AND GATE TO REMAIN



N. Howard St

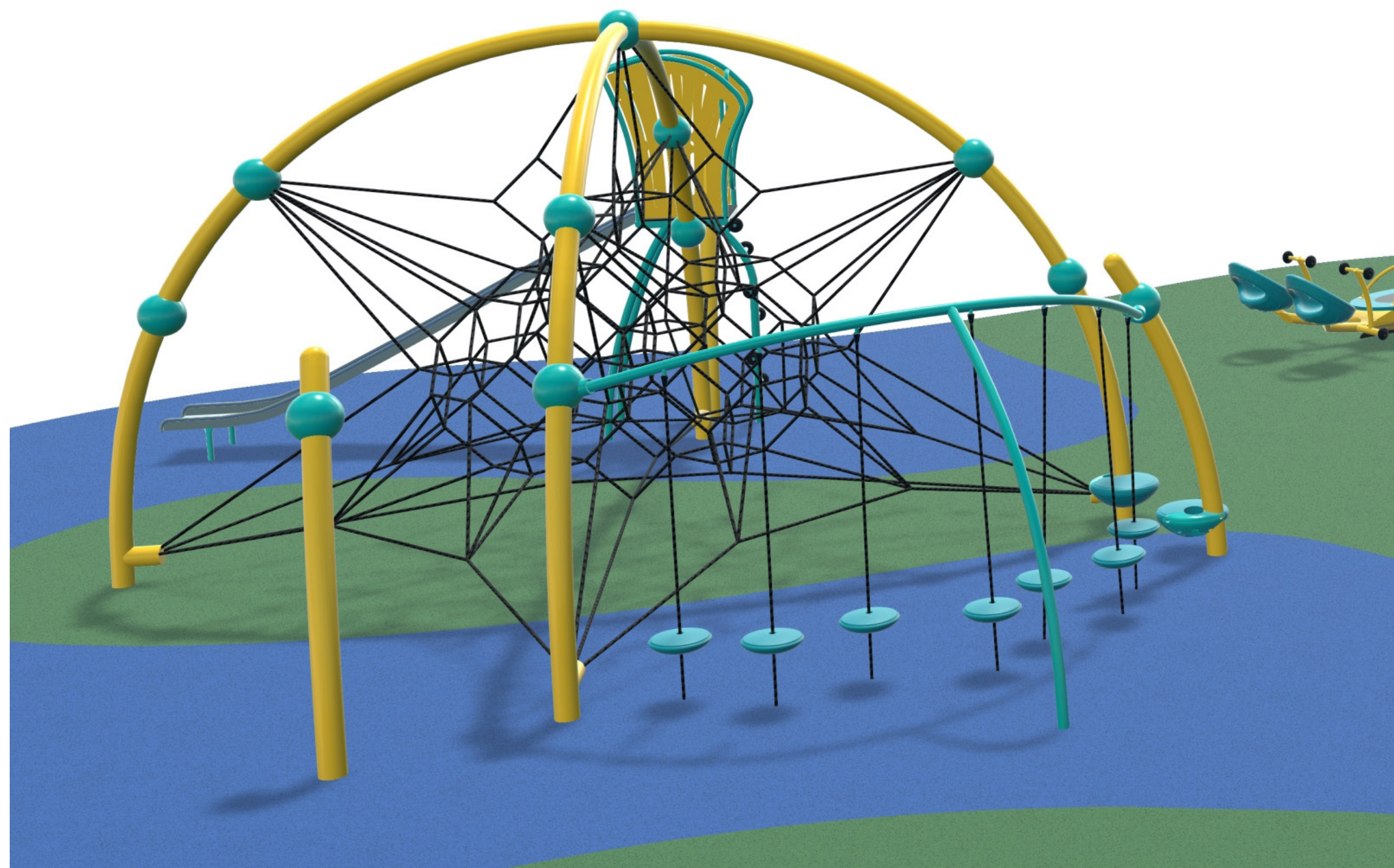






## PLAY:

- Harmonious natural colors are not overstimulating, while still including high-contrast elements and varied textures
- Play equipment selected to support open-ended imaginative and creative play





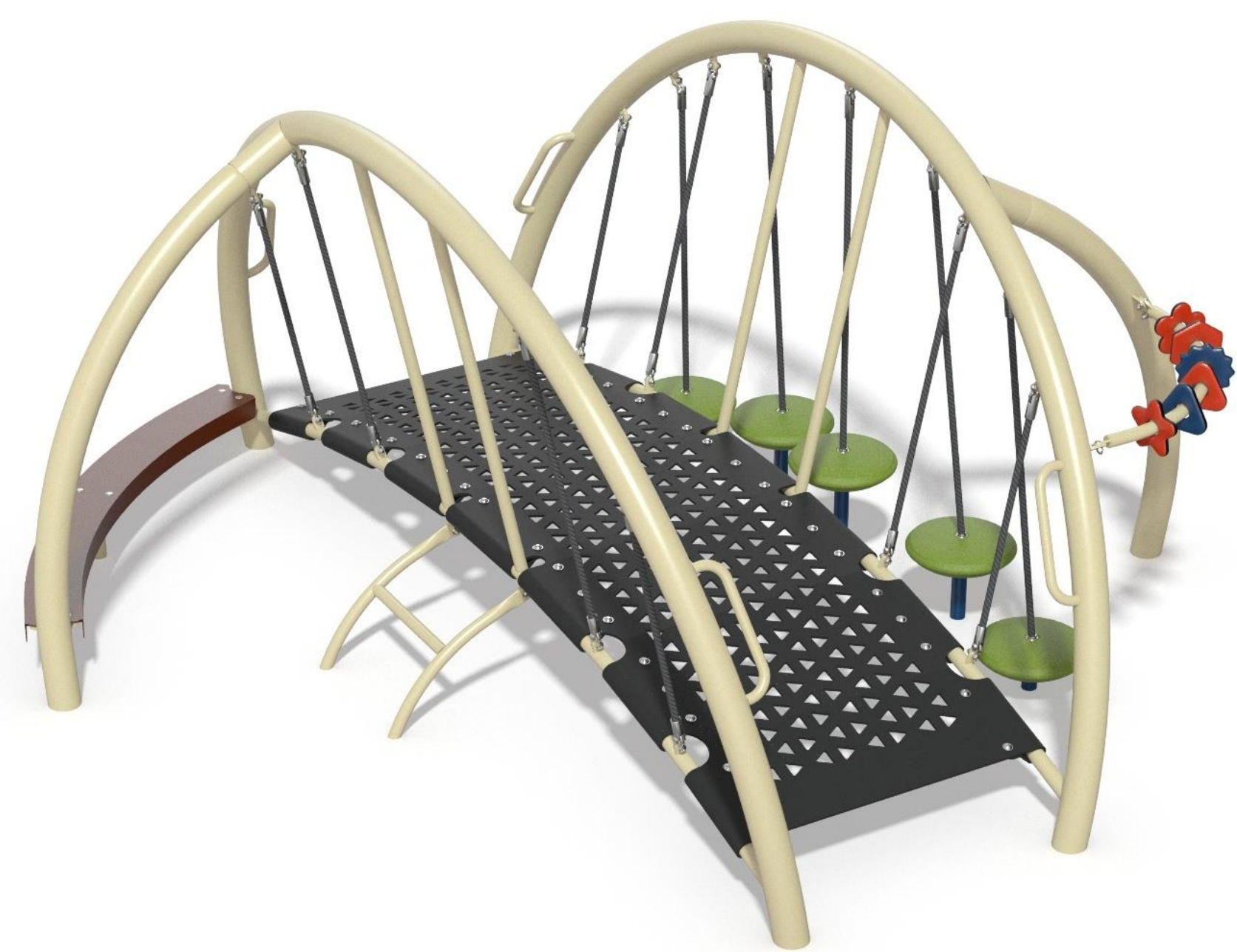
NET STRUCTURE WITH SLIDE (5-12)



SEESAW



PLAY BRIDGE (2-5)



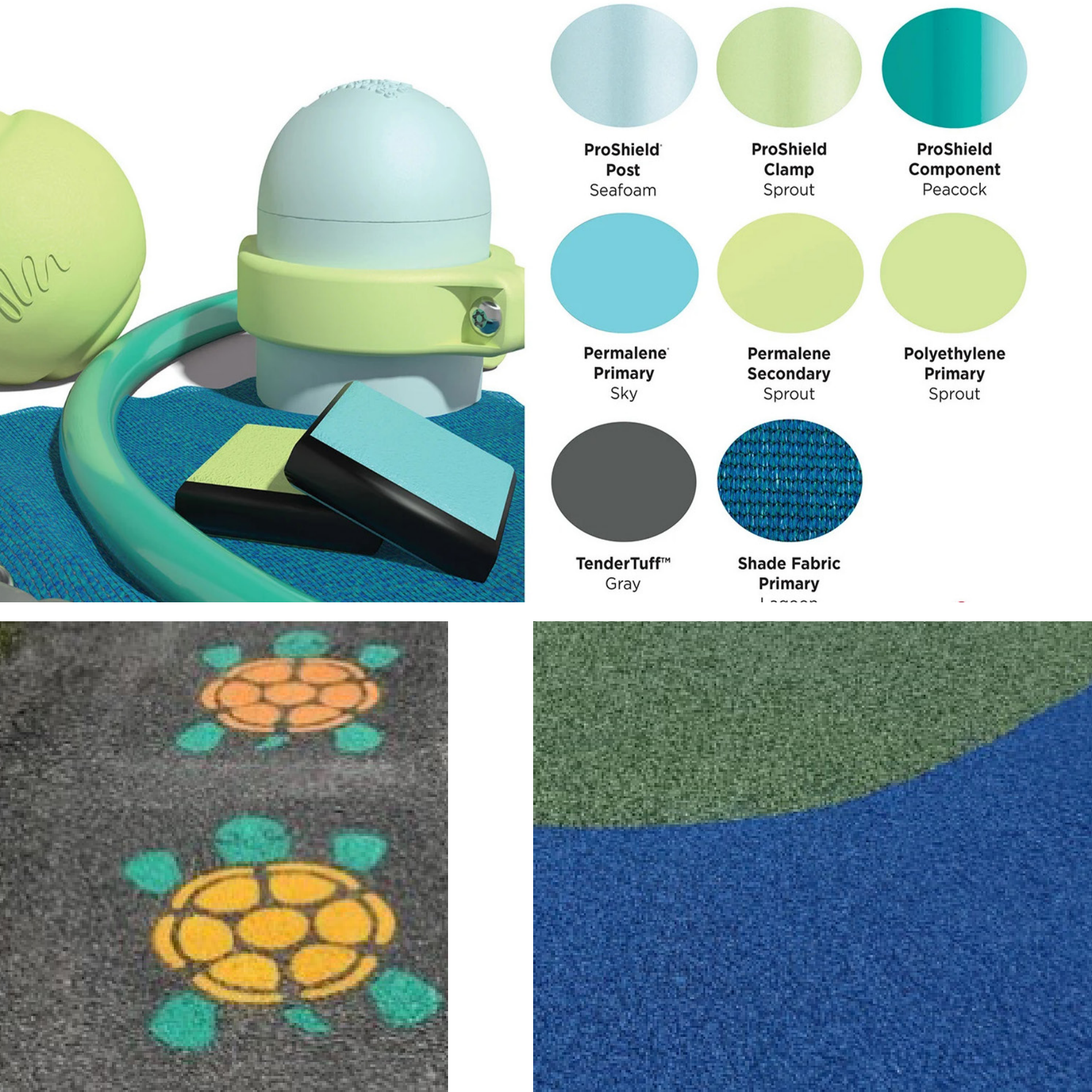
SWINGS



HILL SLIDE (2-5)



Overall play equipment theme:





## FURNISHINGS



Litter receptacle



Game tables (include in ADA)



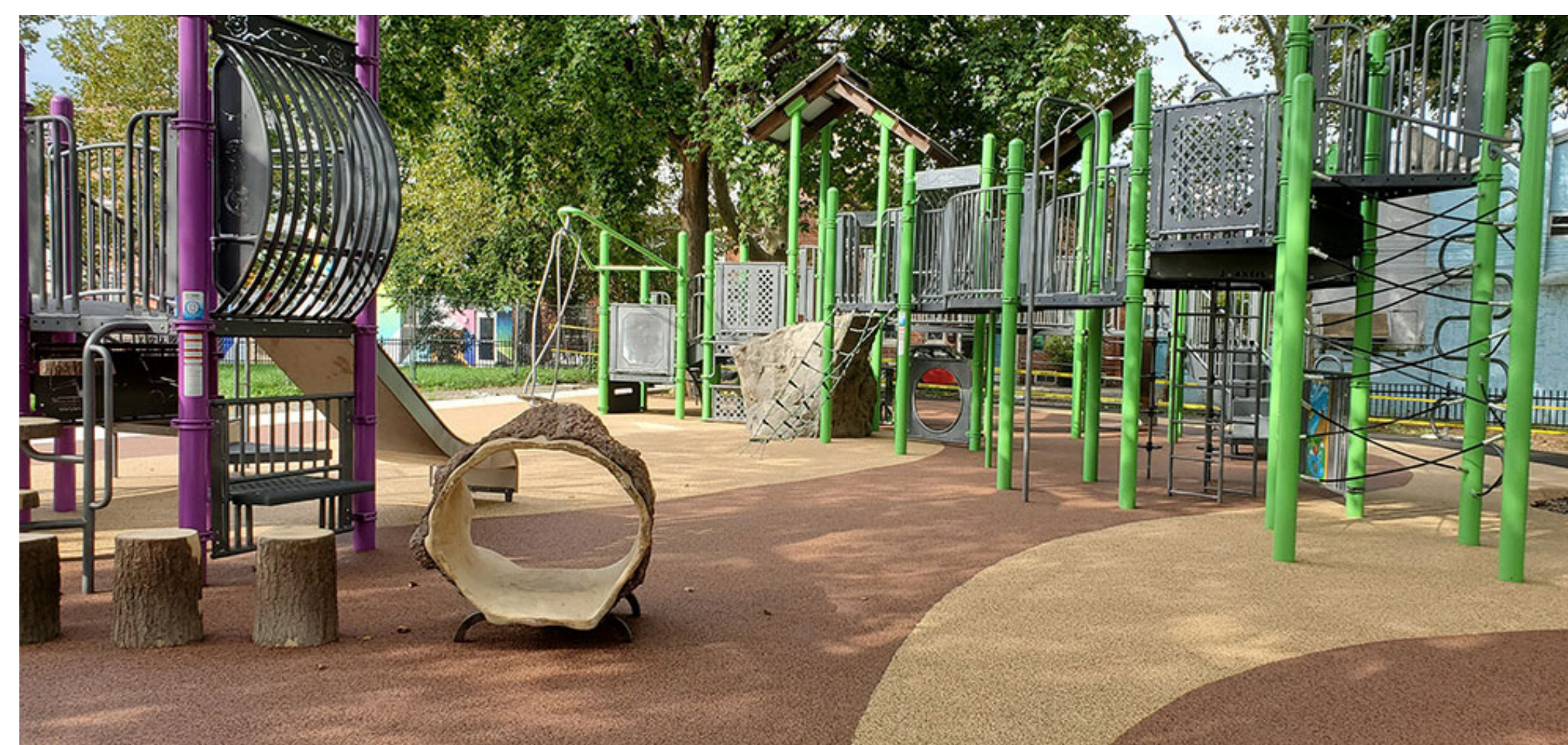
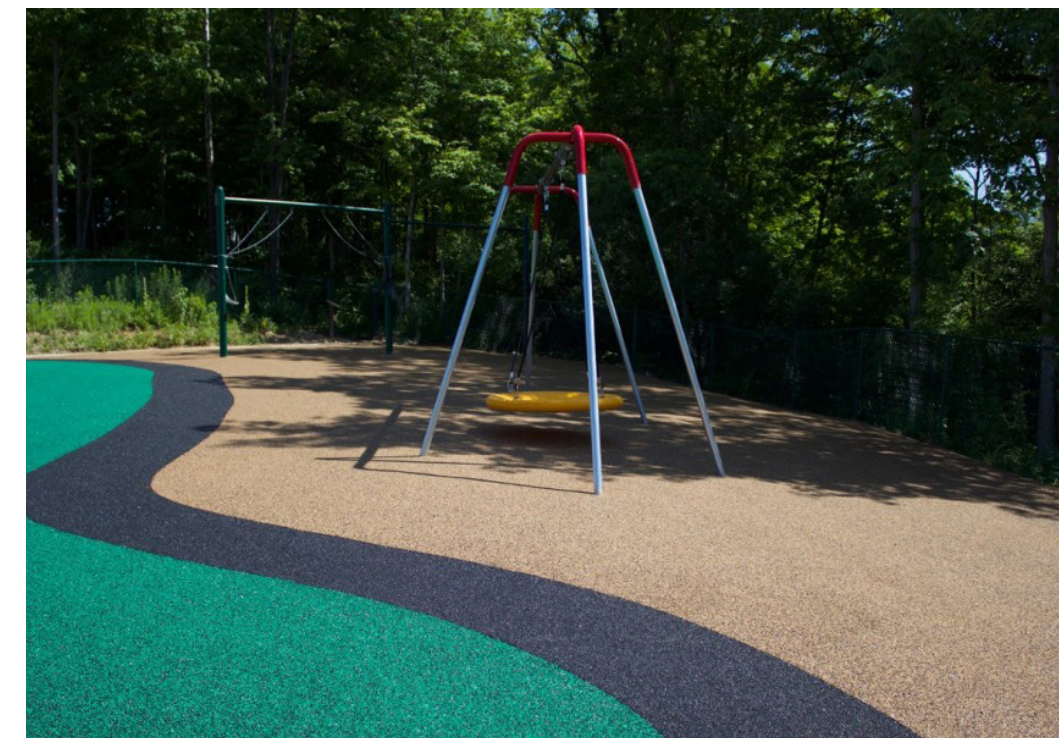
Benches



## PAVING AND SURFACE TREATMENT



Resin-Bound Aggregate



Rubber Safety Surfacing

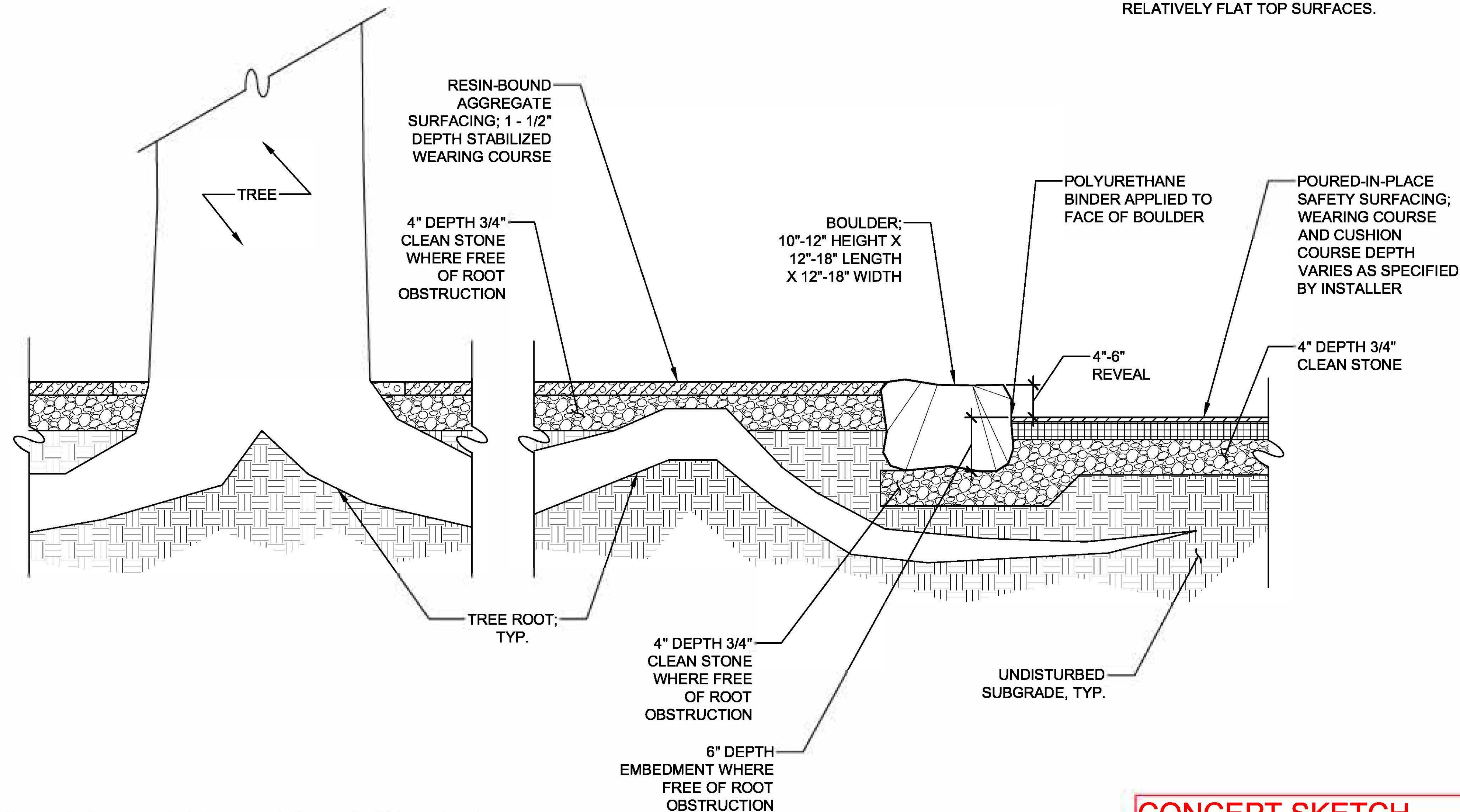


Painted Games/Stencil



NOTES:

- 1. CONTRACTOR TO EXCAVATE CAREFULLY USING HAND DIGGING AND AIR SPADING.
- 2. BOULDERS TO BE SELECTED FOR RELATIVELY FLAT TOP SURFACES.



1  
Lx

Boulder at Tree Root Sketch

CONCEPT SKETCH  
NOT FOR CONSTRUCTION