

SAFER NEIGHBORHOOD STREETS

FOR EVERYONE

WHAT IS A NEIGHBORHOOD BIKEWAY?

- A street with low traffic **volumes** and **speeds** that is comfortable for people walking and biking
- A key part of a **low-stress** network of bicycle routes
- **Signage and pavement markings** are used to increase awareness that **the road is shared** by bicyclists and drivers. Share your ideas on the Treatments board for what other features you want to see in your community.

WHAT ARE THE BENEFITS?

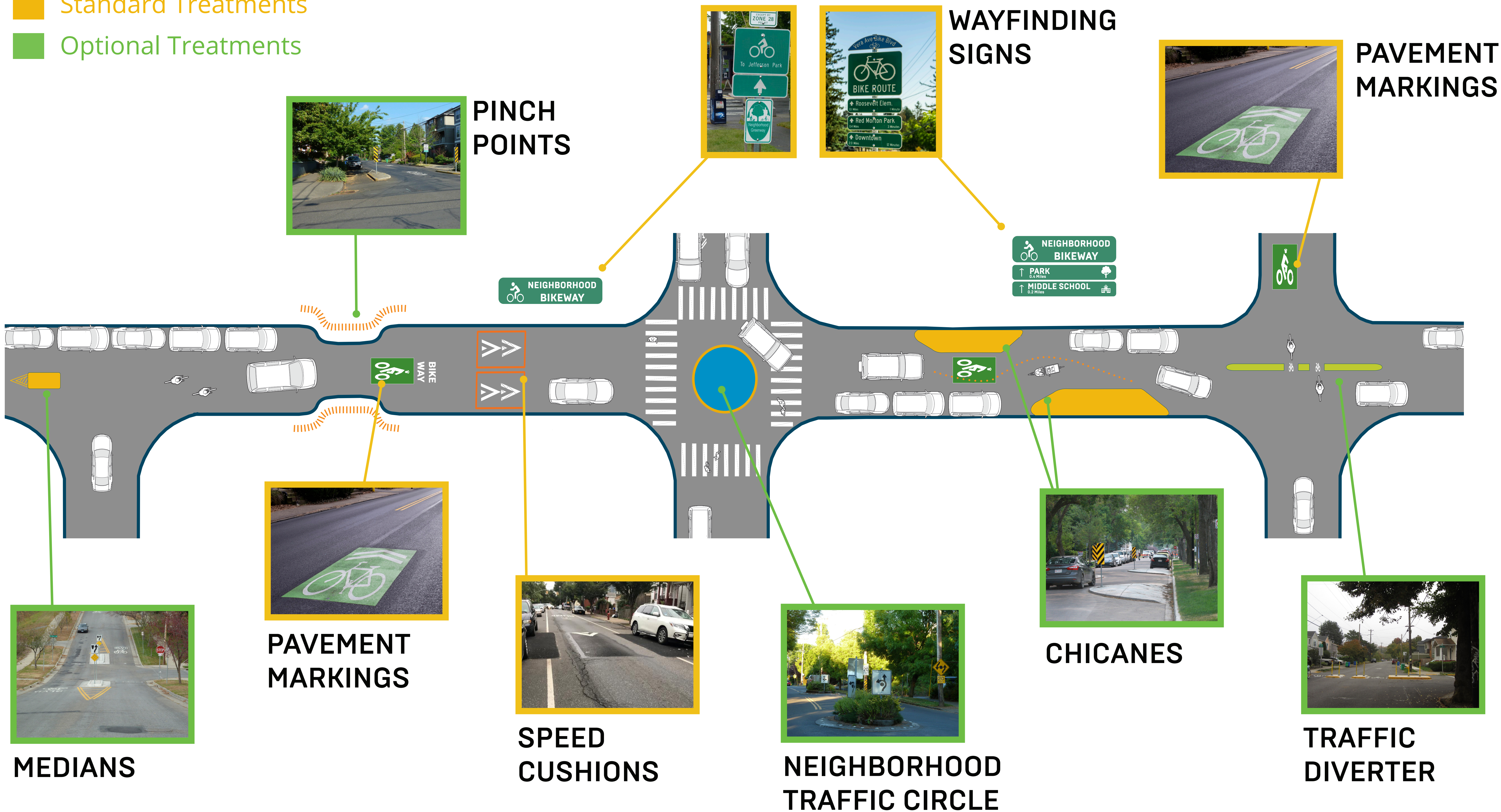
- Increased road **safety for all users**
- Expanded bike network for people of **all ages and abilities**
- May encourage more people to bike on the street rather than a sidewalk
- Provides **alternatives** to busy arterials to connect to key destinations



HOW TREATMENTS WORK TOGETHER

Neighborhood Bikeways

- Standard Treatments
- Optional Treatments



MEDIANS

PAVEMENT MARKINGS

SPEED CUSHIONS

NEIGHBORHOOD TRAFFIC CIRCLE

CHICANES

TRAFFIC DIVERTER

BIKEWAY TREATMENT OPTIONS

WHAT DO YOU WANT TO SEE ON NEIGHBORHOOD BIKEWAYS?

VOTE BELOW!

Neighborhood Bikeway Treatment Options:

Treatments shown below can be incorporated to physically slow traffic, limit or redirect car access, and enhance safety for all users. Place a dot on the two treatments you most want to see.

ANYTHING WE'RE MISSING?:

Are there other treatments you want to see?
Questions about how they would work?

PINCH POINTS

Narrow the roadway to reduce speeds and shorten crossings



CHICANES

Deflect travel paths to reduce speeds



NEIGHBORHOOD TRAFFIC CIRCLE

Reduce speeds and turning conflicts



TRAFFIC DIVERTER

Physical barriers restrict car throughput but let bicycles pass through



CONTRAFLOW BIKE LANES

Bicycles travel against (one-way) traffic



MEDIANS

Medians in key spots narrow the roadway, reduce turning speeds



RAISED CROSSINGS

Like speed cushions, reduces driver speed



ONE-WAY STREETS

Convert two-way to one-way streets with space for bicycle facilities



HOW ARE WE THINKING ABOUT EVALUATING ROUTES?

The following factors were identified for evaluating potential bikeway routes, and ultimately will help us to prioritize the routes and streets that are best-suited for the project.

GOAL Identify 2-3 neighborhood bikeways per neighborhood



STREET FEATURES

- **Direct** routes with few/no turns
- Sufficiently **low car volumes** (<3,000/day)
- Low car speeds, or potential for **lower speeds** with bikeway tools
- Few or **no traffic lights** (signalized intersections) to support biking flow, except at major intersections
- Limited conflicts or interactions with buses and other large vehicles

BIKE NETWORK

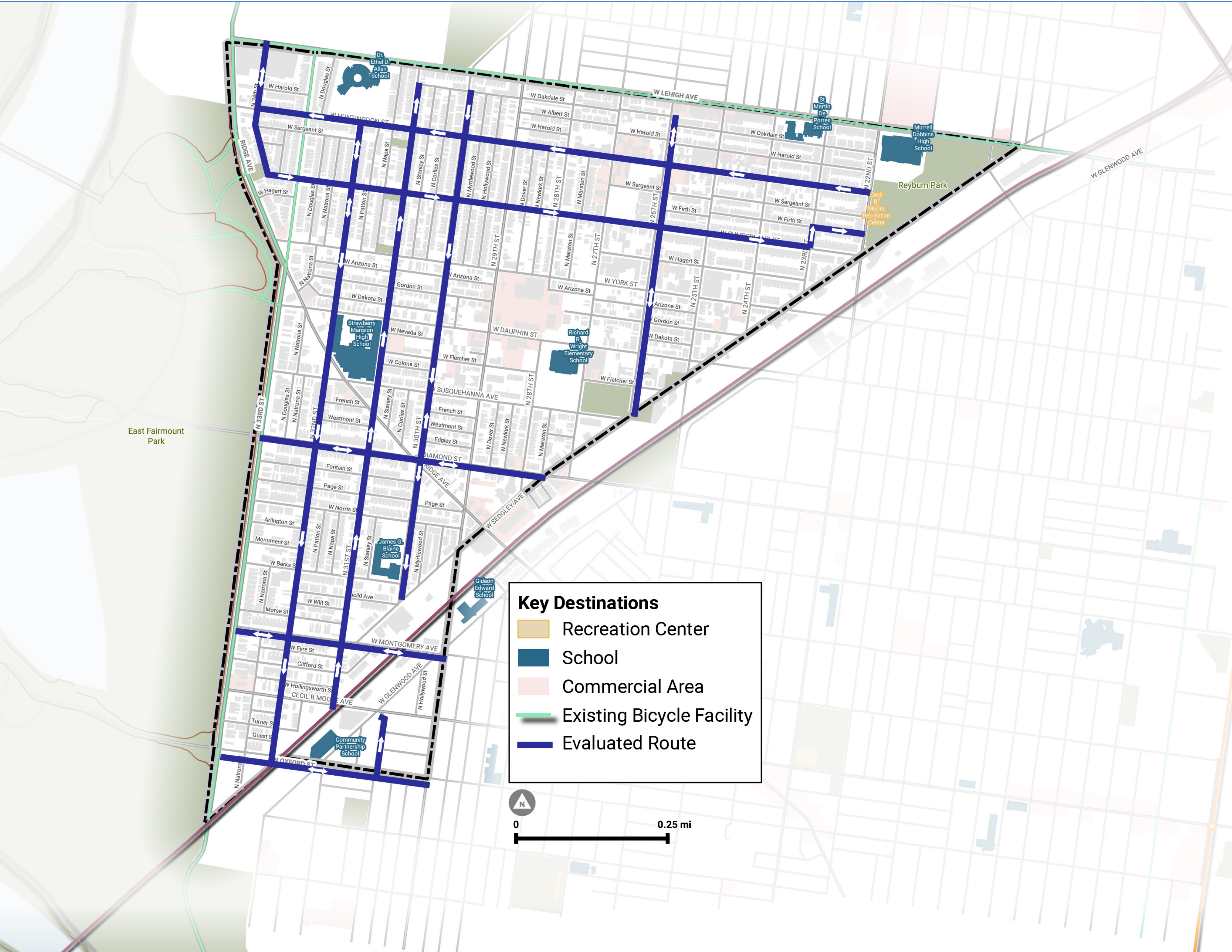
- Connects to existing **bike network**
- Connects to, or supports, future bike network
- Addresses Bicycle Level of Traffic Stress (LTS) **connectivity gaps**

CONNECTIVITY

- Connects to key **community destinations**, including: parks, schools, commercial corridors, essential services, cultural and community centers... considering the number *and* diversity of destinations
- Connects to **SEPTA** stations and service

STRAWBERRY MANSION

COMPLETE STREETS NEIGHBORHOOD BIKEWAYS



SHARE YOUR IDEAS:

Do these Neighborhood Bikeway Study Streets make sense to you?
Share your comments by writing or placing post-it notes in this box, or conveying your feedback to the facilitator.

Any other routes we should consider?

COMPLETE STREETS

SAFER NEIGHBORHOOD STREETS FOR EVERYONE

| WHAT ABOUT ARTERIAL STREETS?

- Neighborhood Bikeways are just one type of bicycle project, intended to connect neighborhood destinations along low-traffic neighborhood streets.
- Future projects will consider more protective designs on arterial streets to connect to bike facilities across the network.

| WHAT IF I DON'T RIDE A BIKE?

- Neighborhood Bikeways **slow traffic** on residential streets in your neighborhood, creating a **more comfortable** street for residents.
- Whether walking, biking, or even driving, there are benefits to all users!

| THE "LOADING ZONE"

Post your comments and questions below!

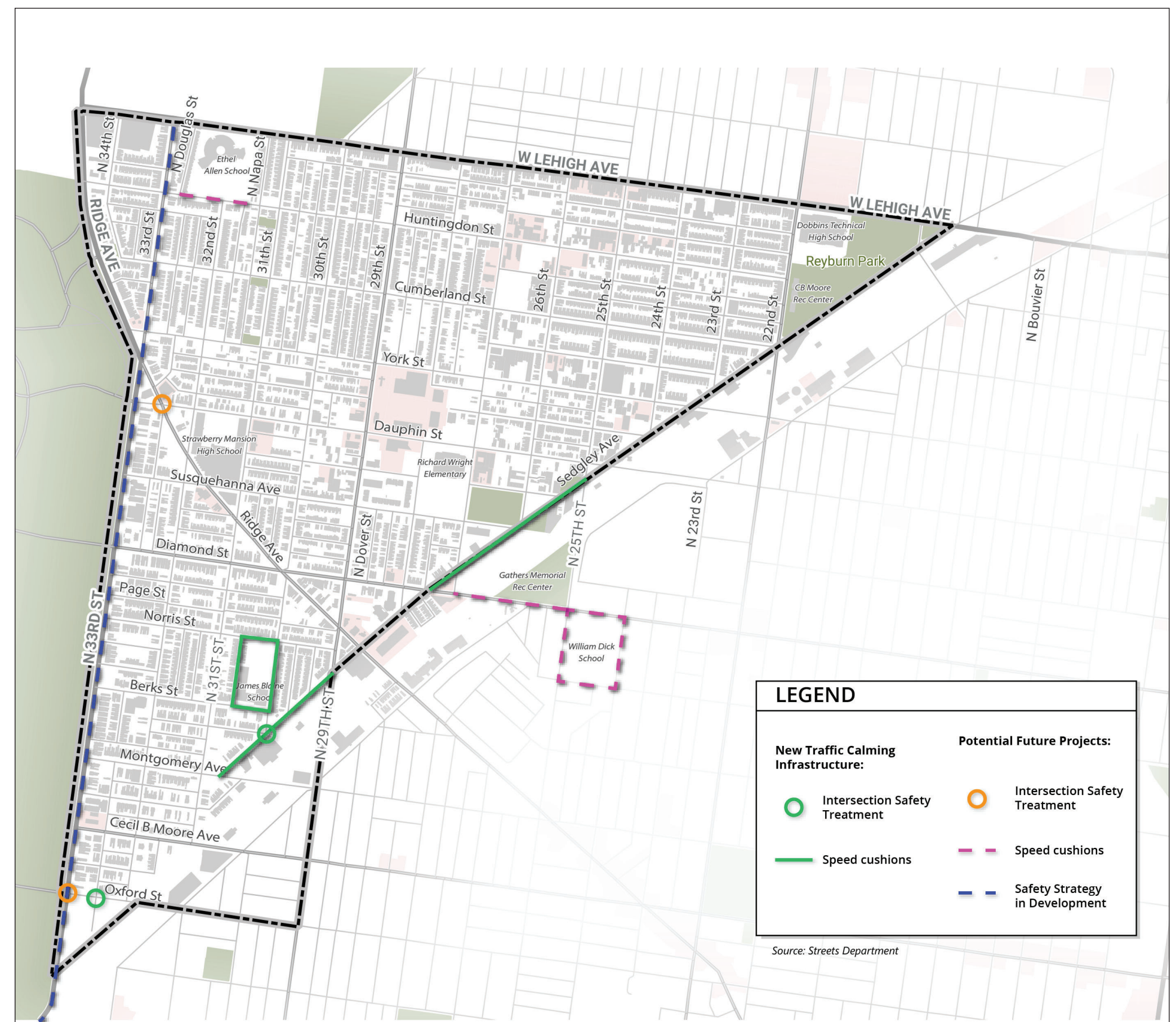
TRAFFIC SAFETY PROJECTS

STRAWBERRY MANSION

HERE IS THE PROCESS FOR TRAFFIC CALMING

1. Ask Streets for a Traffic Study or Comment at this Meeting
2. Streets Department will put it in the queue for a Traffic Study
3. Streets Department evaluates concerns based on:
 - Traffic Crashes
 - Speeding
 - Pedestrian generators (schools, parks, transit)
 - Traffic volume
 - Location of a School or Recreation Center

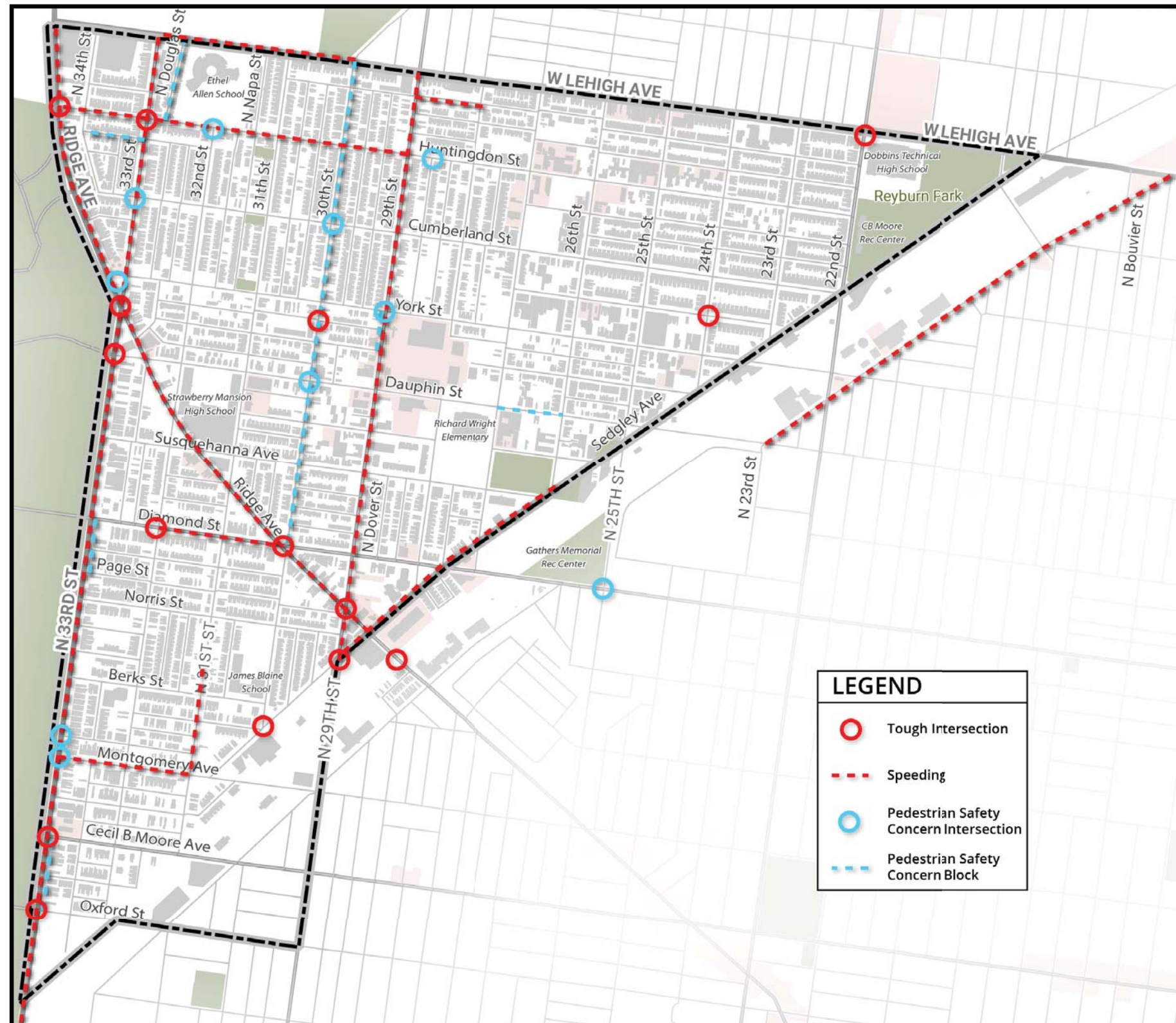
HERE IS WHAT IS COMPLETED OR IN DEVELOPMENT AS OF FALL 2023



WHAT WE HEARD AT THE JULY 2023 MEETINGS

IS THERE ANYTHING WE'RE MISSING? ADD YOUR COMMENTS AND IDEAS

TRAFFIC SAFETY CONCERNS



Did we miss anything?

Write a comment here or mark on the map your traffic safety concerns.