

September 27, 2023

C. Alex Smith

The Philadelphia Art Commission

One Parkway, 1515 Arch Street, 13th Floor

Philadelphia, PA 19102

PROJECT: City of Philadelphia Public Restroom Pilot, Clark Park Unit

SUBJECT: Art Commission Concept and Final Design Cover Letter and Materials

Dear Alex Smith,

At the October 11<sup>th</sup>, 2023 Philadelphia Art Commission meeting, the Department of Public Property (DPP) and the Managing Director's Office (MDO-HHS) would like to share the final design for a public bathroom scheduled to be installed in Clark Park this winter. Because this is the third location in the "Philly Phlush" pilot that has gone before the Art Commission, we are seeking administrative approval.

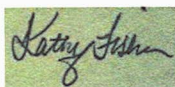
This public bathroom is part of a City pilot that will operate six public restrooms, each in a different neighborhood. This public restroom planned for Clark Park (near the corner of South 43rd Street and Regent Square) would fulfill the community need for a public restroom within the park. The "Portland Loo" model was selected after researching several options in order to provide a permanent, dignified, durable, attractive, and ADA compliant design to provide a safe public restroom option for a broad group of people – including families, tourists, businesses, and underserved individuals. The Art Commission may recognize this model as it was approved as a part of the Fotherall Square Rebuild Project (presented on 03/09/2022 and 4/13/2022), The Vernon Park Rebuild Project (presented on 7/12), and the Center City Public Restroom pilot (presented on 05/10/23). This model is operational at the Center City location and the Fotherall Square location.

MDO-HHS has worked extensively with The Friends of Clark Park, Philadelphia Parks and Recreation, the University City District, and other community members since late 2022 to receive input on both this location and operations of the public restroom prior to presenting before the Art Commission. We have contracted with PHDC to lead the construction and installation process and we plan to install the unit this winter.

MDO-HHS looks forward to sharing the design for the Clark Park public restroom and providing more information on the in-depth community engagement, site selection, and operations. We appreciate the opportunity to present the final design before the Art Commission.

Thank you for your consideration. Should you require additional information or have questions please do not hesitate to contact us.

Sincerely,



Kathy Fisher  
Chief of Staff  
Health and Human Services  
215-876-545



Thomas C. McDade III  
Deputy Chief of Staff  
Department of Public Property  
215-906-9002

## Submission to the Philadelphia Art Commission

October 11, 2023 Meeting

### Materials for the City of Philadelphia Public Restroom Pilot - Clark Park Location

#### 1. Roles, Name, and Contact Information

The Public Restroom Pilot is led by the Managing Director's Office, which coordinates the work of several City agencies who have made this pilot possible.

##### **Managing Director's Office for Health and Human Services - Project Owner**

Kathy Fisher

Chief of Staff

Office of the Deputy Managing Director for Health & Human Services

215-876-5435

[kathleen.fisher@phila.gov](mailto:kathleen.fisher@phila.gov)

Lauren Hoffarth

Project Manager

Office of the Deputy Managing Director for Health & Human Services

267-357-3671

[Lauren.hoffarth@phila.gov](mailto:Lauren.hoffarth@phila.gov)

##### **Department of Public Property (DPP) – Consultant on the Installation of the Loos**

Thomas C. McDade III

Deputy Chief of Staff

Department of Public Property

215-906-9002

[Thomas.McDade@phila.gov](mailto:Thomas.McDade@phila.gov)

##### **Philadelphia Department of Public Health – Responsible for Operations of the Loos**

Dr. Andrew Best Jr.

Director

Division of Substance Use Prevention and Harm Reduction

215-686-5196

[Andrew.Best@phila.gov](mailto:Andrew.Best@phila.gov)

##### **Philadelphia Housing Development Corporation (PDHC) – Contracted Organization to Install the Loos and Manage Subcontractors**

Dennis Torres

Assistant Director of Design & Construction

Philadelphia Housing Development Corporation (PHDC)

215-448-3075

[dennis.torres@phdc.phila.gov](mailto:dennis.torres@phdc.phila.gov)



## 2. Narrative

### 2a. Project Background

In 2019, HHS launched a public restroom pilot in Kensington, installing temporary public restrooms to address the Hepatitis A outbreak. The temporary public restroom pilot was expanded to Center City in 2020, in response to COVID-19. Through this pilot, HHS and the Health Department gained experience with the temporary restroom model, learning about the maintenance and operational challenges of restroom trailers and porta potties. In 2019, HHS explored alternative models to the restroom trailer and porta potty, including shipping containers, “leasing” existing private restrooms, and other permanent restroom structures.

This pilot of permanent, stand-alone structures offers a long-term solution to the need for public restrooms, which has been addressed with portable restrooms in key areas. Health and Human Services pilot has funding through the Five Year Plan to purchase and install a total of six “Philly Phlushes” , each in different areas of the city, as well as funding for operational staff, supplies, repairs, and materials.

### 2b. The “Portland Loo” Model

HHS reviewed several public restroom models, but the “Portland Loo” was the only model that was built to meet the demands of our diverse City including families, tourists, businesses, and underserved individuals. This model is specifically designed with crime deterrence and safety in mind, and it is known for being both durable and easy to repair because of the modular design with interchangeable parts. The Portland Loo design includes open and angled grating at the top and the bottom of the restroom to provide visibility, which allows operations staff and people on the street to support in keeping the restroom as a safe space (i.e. identifying if someone is in distress, more than one person is in the restroom, someone encamping in the restroom). Additionally, its modular design is made of graffiti resistant material and the individual components of the model are replaceable. The Portland Loo model has been widely adopted nationwide, and HHS has done extensive interviews with other cities to learn about their experience with the model, and the feedback has been overwhelmingly positive. Two units in Philadelphia are operational and receiving positive feedback.

### 2c. Stakeholder Engagement Process

Although the pilot includes six units, it will be scaled over time to allow for extensive community engagement. The first community engagement was done in Clark Park starting in late 2022. HHS has established an extensive community engagement process that has included the following:

- City Council one on one discussions for the District Council Member
- Engagement with Philadelphia Parks and Recreation, the Friends of Clark Park, the University City District, and Studio Brian Hanes after their “Clark Park Master Plan” survey of over 900 residents showed public restrooms were the #1 amenity that community asked for.
- Attended events in the Clark Park Master Plan community engagement process to integrate the public restroom location with other proposed changes in the Master Plan.
- Initial stakeholder advisory group town hall meetings for insight into community engagement process and site location
- Targeted survey for people who are unhoused
- One on one outreach to business owners near site – meetings and survey distribution
- Pop-up engagement event in Clark Park during farmer’s market

- Targeted emails to West Philadelphia stakeholders
- Report out to the stakeholder group on findings
- Check in with City Council on narrowed down sites

## 2d. Site Selection Process

HHS convened a site suitability subcommittee and did a preliminary analysis through site visits with representation from the prospective property managers (DPP/PPR), PCPC, L&I, Water, PDPH, PPD, the Street Department, and the Mayor's Commission on People with Disabilities. The team visited the sites, created the list of technical needs, and reviewed the findings from the preliminary analysis. Technical constraints on where the public restroom can be installed include capacity for connections to water, sewage, and electricity, as well as the size of the space available, land ownership, and regulations on its proximity to intersections and the curb. This means there were multiple locations that community stakeholders suggested that the City considered but did not meet requirements for installation. Additionally, the proposed 4 locations in Clark Park were integrated into the Master Plan design options that were presented to community stakeholders to ensure that the placement of the public restroom would not interfere with other plans for the park.

## 2e. Clark Park Public Restroom Site Description

The location of the public restroom in Clark Park will be near the current basketball court, close to the corner of South 43rd Street and Regent Square. In addition to meeting all the technical criteria, porta potties have been utilized in this southern side of the park for events. Because of this experience, we know that this location will be utilized by a wide variety of individuals who frequent the park for events as well as families who enjoy the playground on the southern side of the park.

## 2f. Maintenance and Operations

Three PDPH Public Restroom Specialists (PRS) staff will be responsible for ensuring the unit is cleaned on a regular daily schedule, with additional servicing as needed. There are two proposed summer schedules for Clark Park that we will receive community feedback on. Hours may reduce in the winter with reduced park use.

- Option 1: 9 am – 8 pm on weekdays and 9 – 9 pm on weekends
- Option 2: 10 am – 9 pm on weekdays and 10 – 10 pm on weekends

The unit will be cleaned about every two hours. Users of the public restroom will be able to notify staff via call/online form for additional cleaning. This feedback will also be used to adapt the cleaning schedule going forward. The Health Department has provided access to Naloxone and safe storage for used sharps in many past projects that will be restocked and emptied respectively. Due to the expectation that the unit will be heavily utilized, the City has budgeted \$5,000 per year per unit for utilities and repairs.

## 3. Proposed Site Photographs

See Appendix A for the slideshow and visuals.

## 4. Drawings of Construction Project

See Appendix A for the slideshow and visuals.

## 5. Building permit application

CP-2023-005587

1101 S. 45<sup>th</sup> St. 19104

## 6. Permission from City Department that Owns Site

The location of the public restroom is Clark Park which is owned by the City of Philadelphia and both Philadelphia Parks & Recreation (PPR) and the Department of Public Property have been a partner in this pilot since the start and have approved the construction.

## 7. Budget

### 7a. Philadelphia Public Restroom Pilot Budget

Funding for the public restroom pilot is included in the Mayor's Five-Year budget at \$656,864 per FY.

### 7b. Clark Park Public Restroom Installation Budget

<i>Total PRA Maintenance Labor Costs:</i> Excavate, layout, forms, rebar, etc., concrete installation, provide temporary fencing, setting of the Portland Loo	\$47,749.44
<i>Total Project Material Costs:</i> Layout, forms, rebar, concrete installation, and purchase of the Portland Loo	\$178,210.00
<i>Equipment Rentals/Dumping Fee Costs:</i> Dumping and equipment for excavating	\$4,000.00
<i>Total Subcontractors Costs:</i> Electrical and plumbing subcontractors	\$139,000.00
<i>Overhead / Administrative Costs</i>	\$47,401.30
<b>Total Costs</b>	<b>\$416,360.83</b>

### 7c. A statement from the Public Art Office about the Percent for Art Program, if your project uses City funds.

Marguerite Anglin, Public Art Director for the Office of Arts, Culture and the Creative Economy (OACCE) has confirmed that because the Clark Park public restroom project does not have estimated construction budget of \$1,000,000 or more, that the Percent For Art requirement is not applicable.



# Public Restroom Art Commission Presentation

October 11th 2023

Kathy Fisher  
Chief of Staff  
MDO-HHS

Lauren Hoffarth  
Project Manager  
MDO-HHS

Tom McDade  
Deputy Chief of Staff  
DPP



City of  
Philadelphia



# Today's Presentation

1

The City's Public Restroom Pilot

2

The Public Restroom Project at Clark Park (1101 S. 45<sup>th</sup> St. 19104)





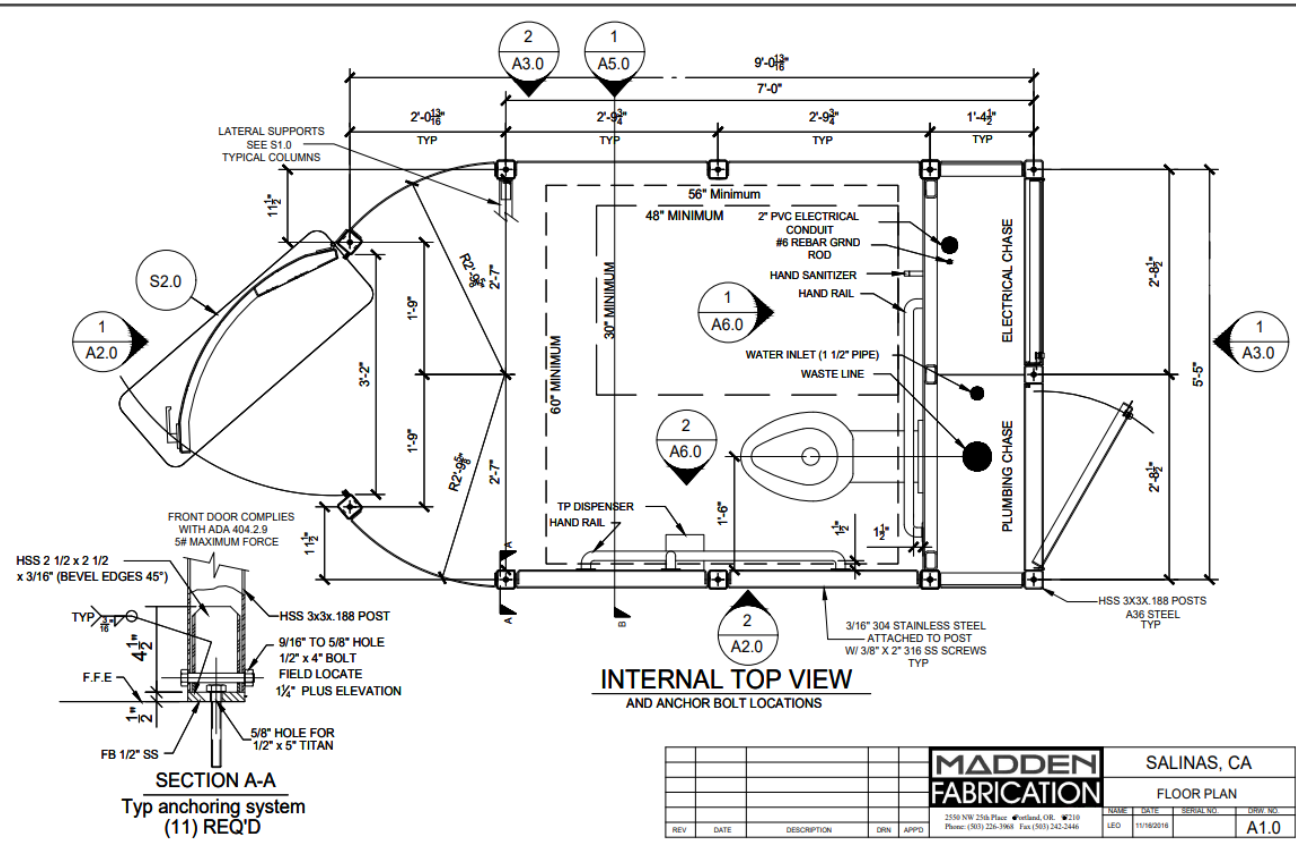
# City's Public Restroom Pilot

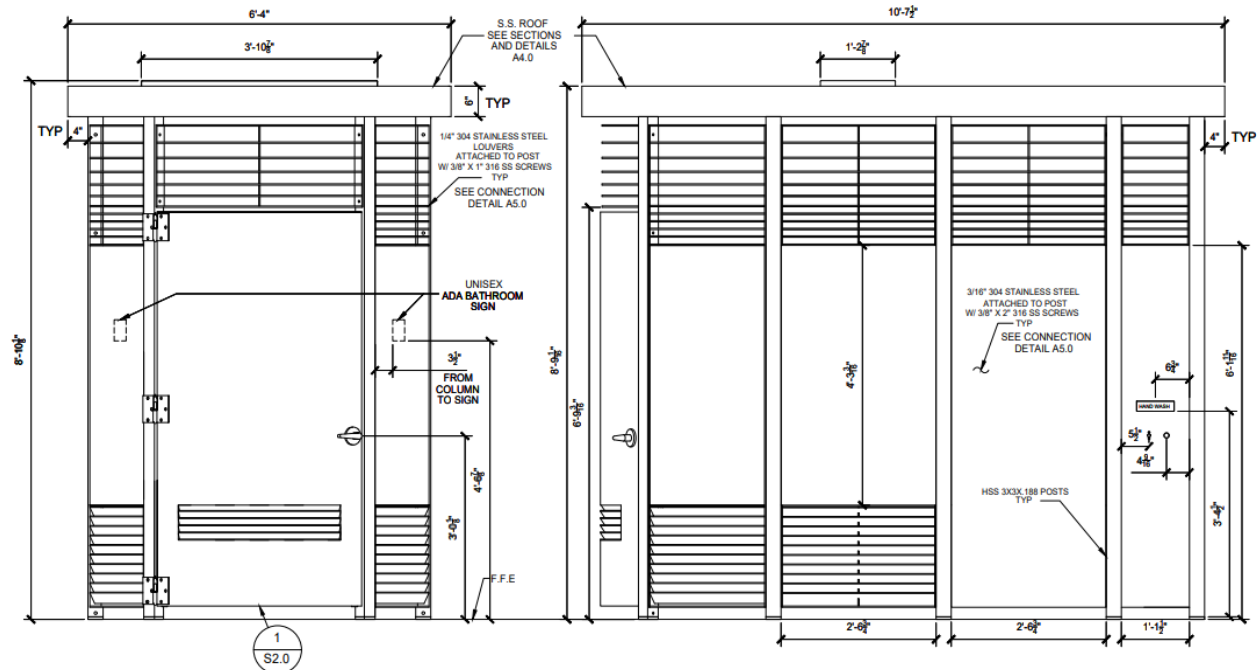
# The Portland Loo



# The Portland Loo - Standard Features



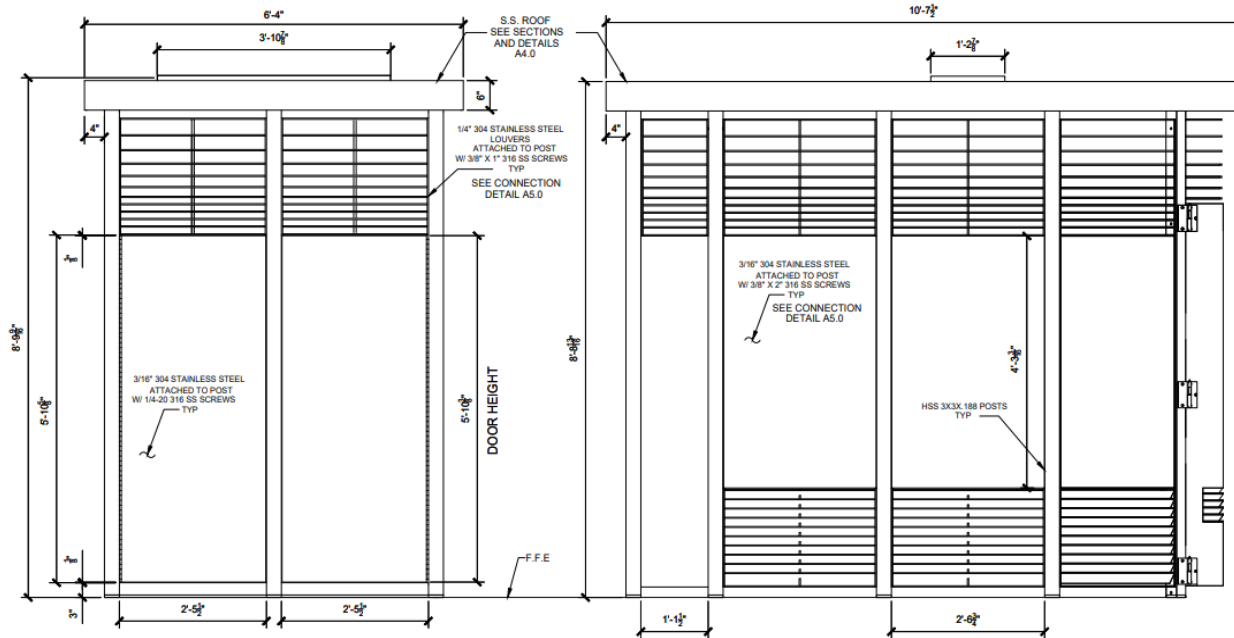




1 FRONT ELEVATION VIEW  
A2.0

2 RIGHT ELEVATION VIEW  
A2.0

					<b>MADDEN FABRICATION</b>				SALINAS, CA	
					EXTERIOR ELEVATIONS FRONT & RIGHT SIDES					
					2550 NW 25th Place • Milwaukie, OR • 97131 Phone: (503) 226-3968 Fax: (503) 242-2446					
REV	DATE	DESCRIPTION	DRN	APPD	NAME	DATE	SERIAL NO.	ORNL NO.		
					LEO	11/16/2018		A2.0		



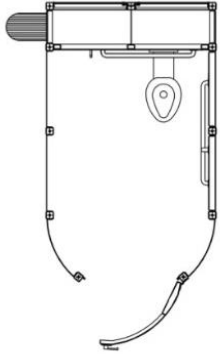
1  
A3.0 BACK ELEVATION VIEW

2  
A3.0 LEFT ELEVATION VIEW

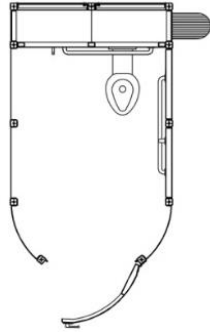
--	--	--	--	--	--	--	--	--	--	--	--	--	--	--	--	--	--	--	--	--	--	--	--	--	--	--	--	--	--	--	--	--	--	--	--	--	--	--	--	--	--	--	--	--	--	--	--	--	--	--	--	--	--	--	--	--	--	--	--	--	--	--	--	--	--	--	--	--	--	--	--	--	--	--	--	--	--	--	--	--	--	--	--	--	--	--	--	--	--	--	--	--	--	--	--	--	--	--	--	--	--	--	--	--	--	--	--	--	--	--	--	--	--	--	--	--	--	--	--	--	--	--	--	--	--	--	--	--	--	--	--	--	--	--	--	--	--	--	--	--	--	--	--	--	--	--	--	--	--	--	--	--	--	--	--	--	--	--	--	--	--	--	--	--	--	--	--	--	--	--	--	--	--	--	--	--	--	--	--	--	--	--	--	--	--	--	--	--	--	--	--	--	--	--	--	--	--	--	--	--	--	--	--	--	--	--	--	--	--	--	--	--	--	--	--	--	--	--	--	--	--	--	--	--	--	--	--	--	--	--	--	--	--	--	--	--	--	--	--	--	--	--	--	--	--	--	--	--	--	--	--	--	--	--	--	--	--	--	--	--	--	--	--	--	--	--	--	--	--	--	--	--	--	--	--	--	--	--	--	--	--	--	--	--	--	--	--	--	--	--	--	--	--	--	--	--	--	--	--	--	--	--	--	--	--	--	--	--	--	--	--	--	--	--	--	--	--	--	--	--	--	--	--	--	--	--	--	--	--	--	--	--	--	--	--	--	--	--	--	--	--	--	--	--	--	--	--	--	--	--	--	--	--	--	--	--	--	--	--	--	--	--	--	--	--	--	--	--	--	--	--	--	--	--	--	--	--	--	--	--	--	--	--	--	--	--	--	--	--	--	--	--	--	--	--	--	--	--	--	--	--	--	--	--	--	--	--	--	--	--	--	--	--	--	--	--	--	--	--	--	--	--	--	--	--	--	--	--	--	--	--	--	--	--	--	--	--	--	--	--	--	--	--	--	--	--	--	--	--	--	--	--	--	--	--	--	--	--	--	--	--	--	--	--	--	--	--	--	--	--	--	--	--	--	--	--	--	--	--	--	--	--	--	--	--	--	--	--	--	--	--	--	--	--	--	--	--	--	--	--	--	--	--	--	--	--	--	--	--	--	--	--	--	--	--	--	--	--	--	--	--	--	--	--	--	--	--	--	--	--	--	--	--	--	--	--	--	--	--	--	--	--	--	--	--	--	--	--	--	--	--	--	--	--	--	--	--	--	--	--	--	--	--	--	--	--	--	--	--	--	--	--	--	--	--	--	--	--	--	--	--	--	--	--	--	--	--	--	--	--	--	--	--	--	--	--	--	--	--	--	--	--	--	--	--	--	--	--	--	--	--	--	--	--	--	--	--	--	--	--	--	--	--	--	--	--	--	--	--	--	--	--	--	--	--	--	--	--	--	--	--	--	--	--	--	--	--	--	--	--	--	--	--	--	--	--	--	--	--	--	--	--	--	--	--	--	--	--	--	--	--	--	--	--	--	--	--	--	--	--	--	--	--	--	--	--	--	--	--	--	--	--	--	--	--	--	--	--	--	--	--	--	--	--	--	--	--	--	--	--	--	--	--	--	--	--	--	--	--	--	--	--	--	--	--	--	--	--	--	--	--	--	--	--	--	--	--	--	--	--	--	--	--	--	--	--	--	--	--	--	--	--	--	--	--	--	--	--	--	--	--	--	--	--	--	--	--	--	--	--	--	--	--	--	--	--	--	--	--	--	--	--	--	--	--	--	--	--	--	--	--	--	--	--	--	--	--	--	--	--	--	--	--	--	--	--	--	--	--	--	--	--	--	--	--	--	--	--	--	--	--	--	--	--	--	--	--	--	--	--	--	--	--	--	--	--	--	--	--	--	--	--	--	--	--	--	--	--	--	--	--	--	--	--	--	--	--	--	--	--	--	--	--	--	--	--	--	--	--	--	--	--	--	--	--	--	--	--	--	--	--	--	--	--	--	--	--	--	--	--	--	--	--	--	--	--	--	--	--	--	--	--	--	--	--	--	--	--	--	--	--	--	--	--	--	--	--	--	--	--	--	--	--	--	--	--	--	--	--	--	--	--	--	--	--	--	--	--	--	--	--	--	--	--	--	--	--	--	--	--	--	--	--	--	--	--	--	--	--	--	--	--	--	--	--	--	--	--	--	--	--	--	--	--	--	--	--	--	--	--	--	--	--	--	--	--	--	--	--	--	--	--	--	--	--	--	--	--	--	--	--	--	--	--	--	--	--	--	--	--	--	--	--	--	--	--	--	--	--	--	--	--	--	--	--	--	--	--	--	--	--	--	--	--	--	--	--	--	--	--	--	--	--	--	--	--	--	--	--	--	--	--	--	--	--	--	--	--	--	--	--	--	--	--	--	--	--	--	--	--	--	--	--	--	--	--	--	--	--	--	--	--	--	--	--	--	--	--	--	--	--	--	--	--	--	--	--	--	--	--	--	--	--	--	--	--	--	--	--	--	--	--	--	--	--	--	--	--	--	--	--	--	--	--	--	--	--	--	--	--	--	--	--	--	--	--	--	--	--	--	--	--	--	--	--	--	--	--	--	--	--	--	--	--	--	--	--	--	--	--	--	--	--	--	--	--	--	--	--	--	--	--	--	--	--	--	--	--	--	--	--	--	--	--	--	--	--	--	--	--	--	--	--	--	--	--	--	--	--	--	--	--	--	--	--	--	--	--	--	--	--	--	--	--	--	--	--	--	--	--	--	--	--	--	--	--	--	--	--	--	--	--	--	--	--	--	--	--	--	--	--	--	--	--	--	--	--	--	--	--	--	--	--	--	--	--	--	--	--	--	--	--	--	--	--	--	--	--	--	--	--	--	--	--	--	--	--	--	--	--	--	--	--	--	--	--	--	--	--	--	--	--	--	--	--	--	--	--	--	--	--	--	--	--	--	--	--	--	--	--	--	--	--	--	--	--	--	--	--	--	--	--	--	--	--	--	--	--	--	--	--	--	--	--	--	--	--	--	--	--	--	--	--	--	--	--	--	--	--	--	--	--	--	--	--	--	--	--	--	--	--	--	--	--	--	--	--	--	--	--	--	--	--	--	--	--	--	--	--	--	--	--	--	--	--	--	--	--	--	--	--	--	--	--	--	--	--	--	--	--	--	--	--	--	--	--	--	--	--	--	--	--	--	--	--	--	--	--	--	--	--	--	--	--	--	--	--	--	--	--	--	--	--	--	--	--	--	--	--	--	--	--	--	--	--	--	--	--	--	--	--	--	--	--	--	--	--	--	--	--	--	--	--	--	--	--	--	--	--	--	--	--	--	--	--	--	--	--	--	--	--	--	--	--	--	--	--	--	--	--	--	--	--

# Portland Loo – Features that can be customized by the manufacturer

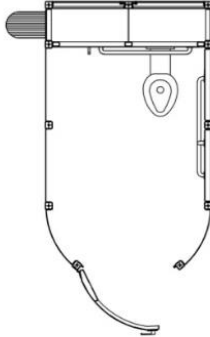
Left Door,  
Left Hand Wash



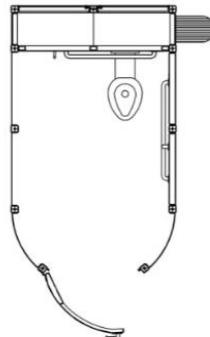
Left Door  
Right Hand Wash.



Right Door,  
Left Hand Wash



Right Door,  
Right Hand Wash





# Portland Loo – Philadelphia's Added Features





# Operations Planning: How would the Loo be kept clean and maintained?



- 3 full-time staff hired
- Cleanings and re-stocking throughout the day



# Clark Park Public Restroom

# Community Engagement Process

Clark Park Master  
Planning Process

900 Survey Responses on  
goals for Clark Park

Public Restrooms #1 on  
this survey.



# Community Engagement Process



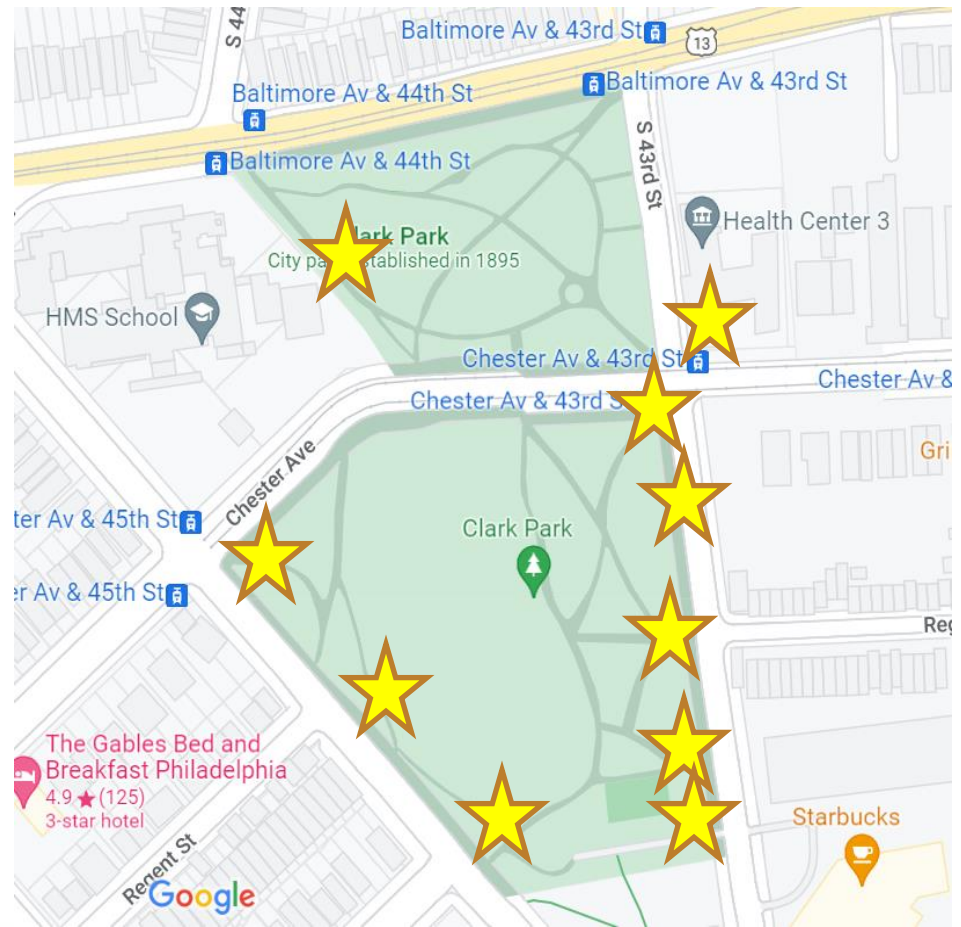
Started Dec 2022, meeting with the stakeholders for the Clark Park Master Plan

Site visits

Presenting at the Master Plan events

Expanded engagement with pop-up events at the farmer's market, outreach to businesses, survey for folks experiencing homelessness, and presentations at community group meetings.

# Site Selection – site visits





# Site Selection – Criteria for Site Visits

Technical Criteria

Pedestrian and intersection criteria

Safety criteria

Consideration of other proposed Master Plan amenities

Stakeholder feedback

Other / Criteria added by stakeholders






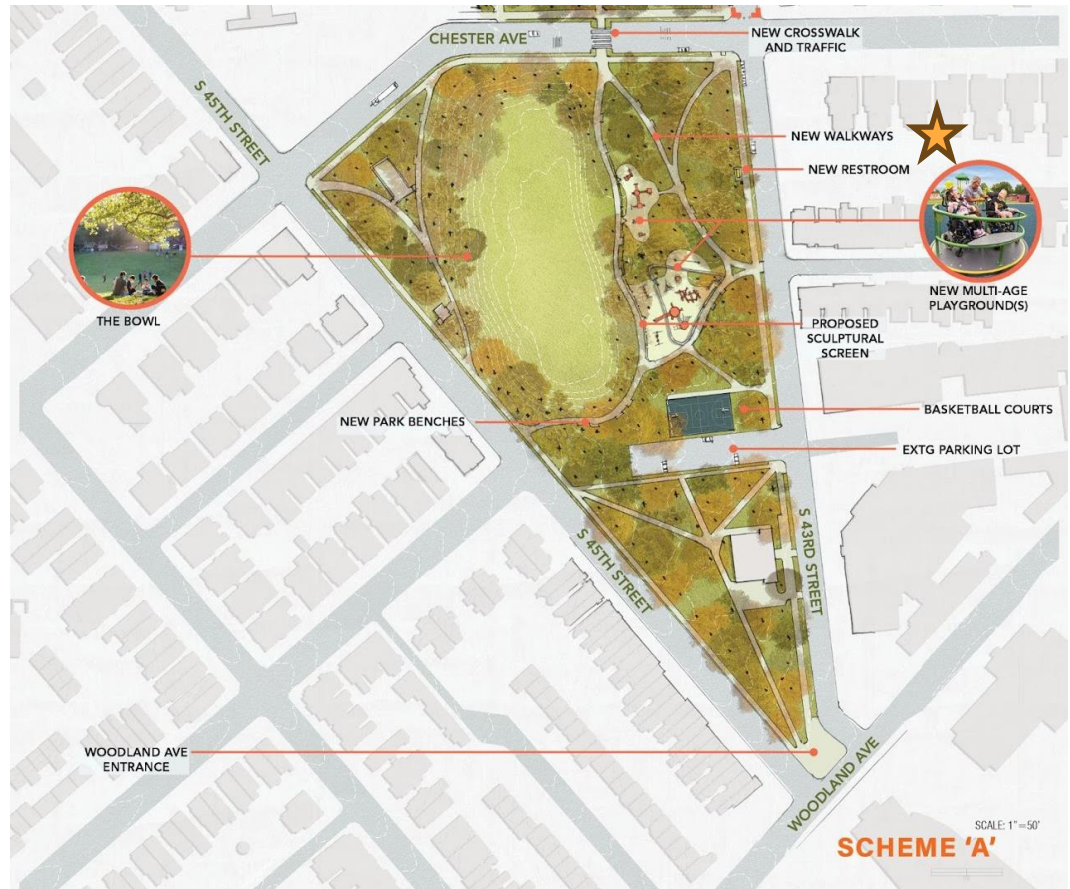
## Site Selection

Feasible locations from the site visits shared with the Master Planning stakeholders.

Locations were incorporated into their designs, 4 of which were shared to community groups and through public meetings.



# Scheme A – near the playground





# Scheme B – in the parking lot



# Scheme C – near the Basketball Court

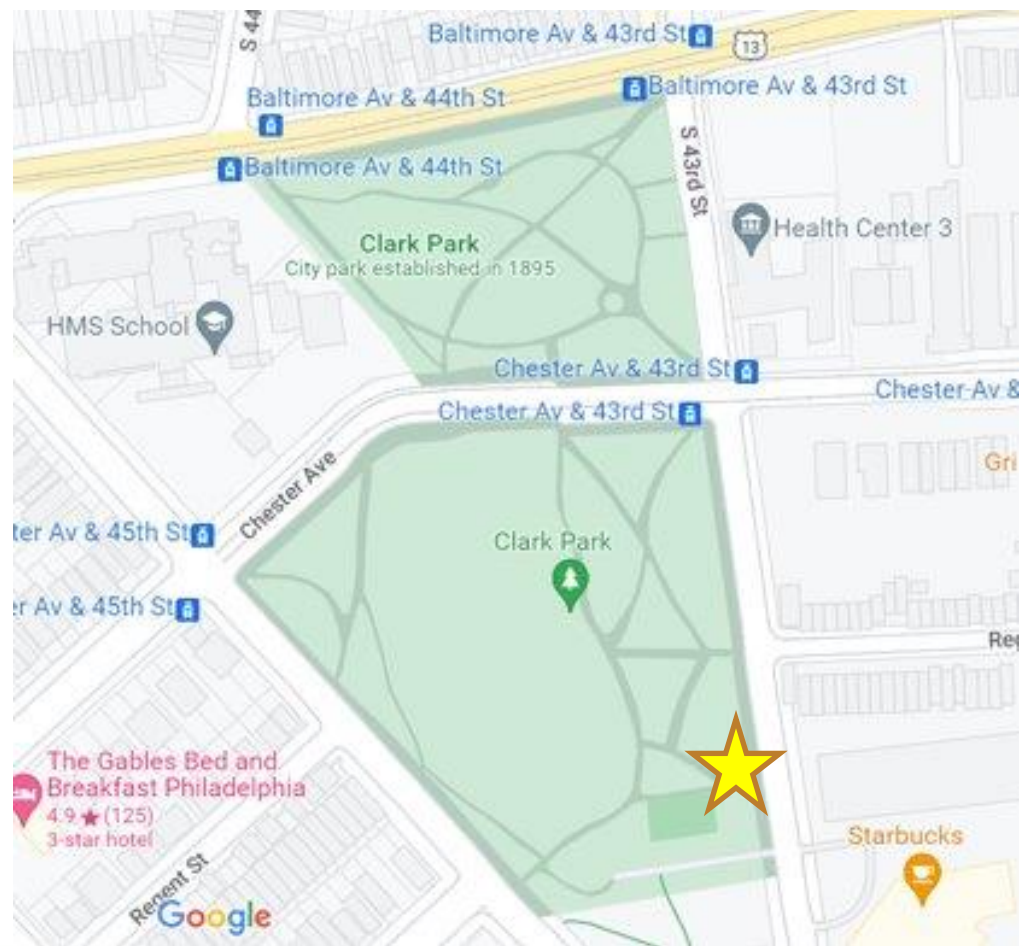


# Scheme D – by the shed



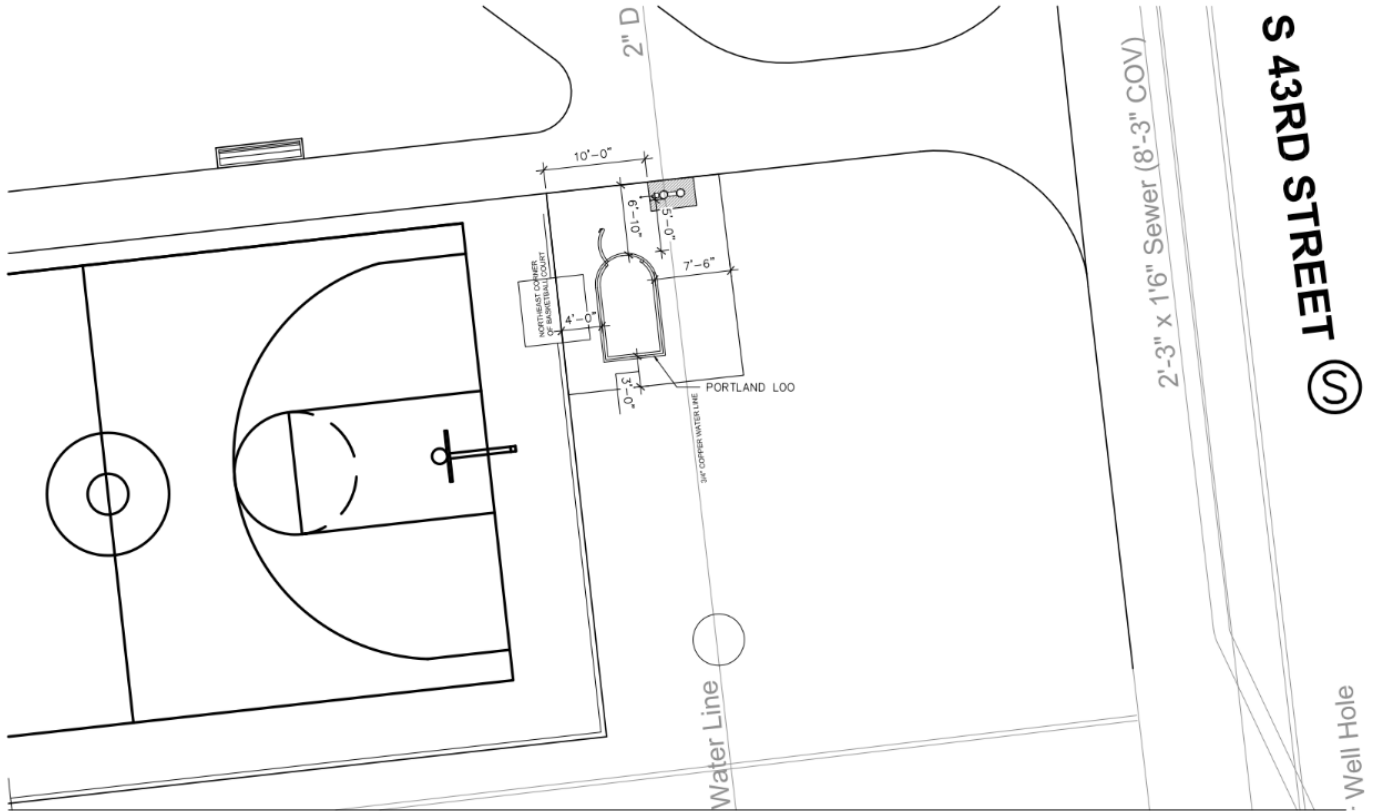


Site Selection –  
near the basketball  
court and the corner  
of South 43rd Street  
and Regent Square



# Current Site Conditions

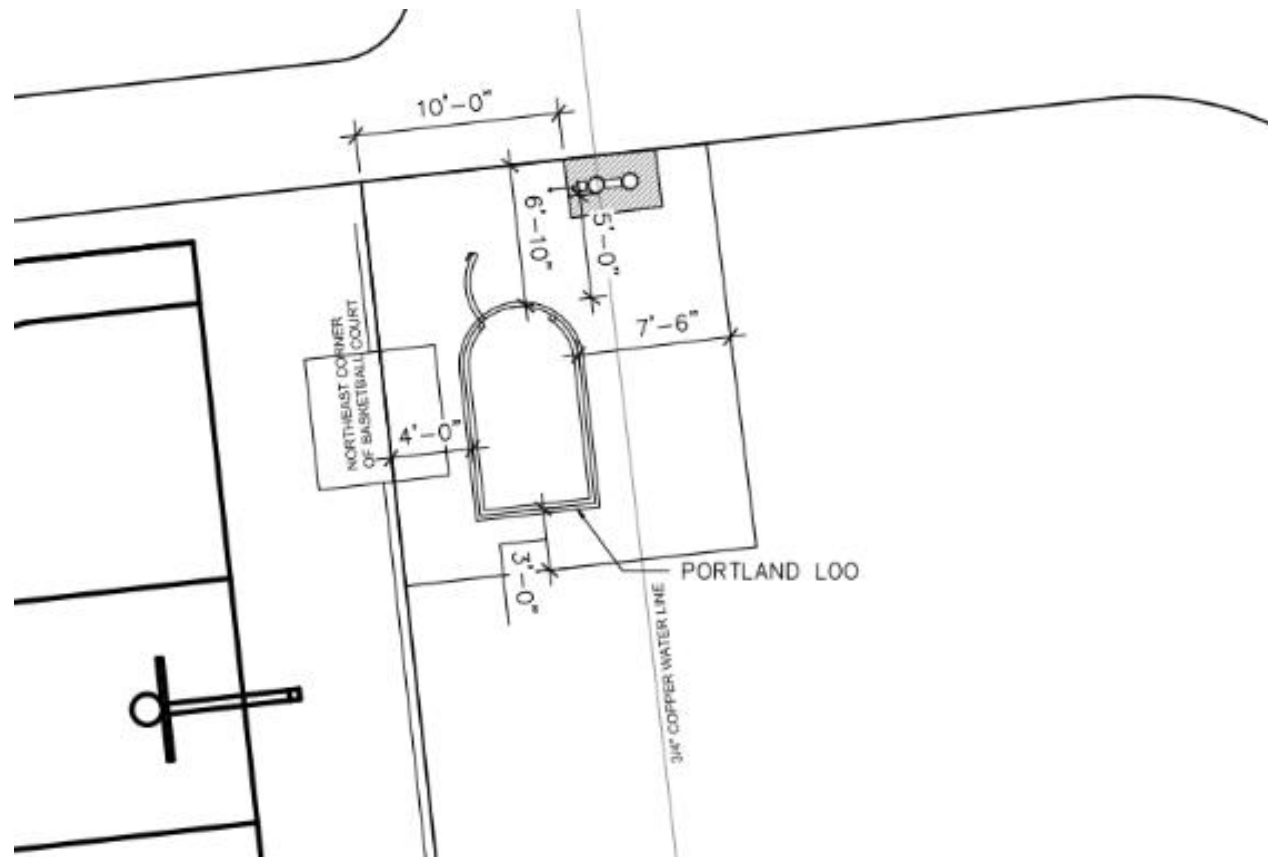




**STUDIO BRYAN HANES**  
340 North 12th Street, Suite 415  
Philadelphia, PA 19107  
215.562.2858  
www.studiobryanhane.com

**CLARK PARK**  
MASTER PLAN

**L-SK-001**  
SUBJECT: PORTLAND LOO LOCATION V4.2  
SCALE: 1" = 1'-0"  
BHT REF: NA





# Placement

